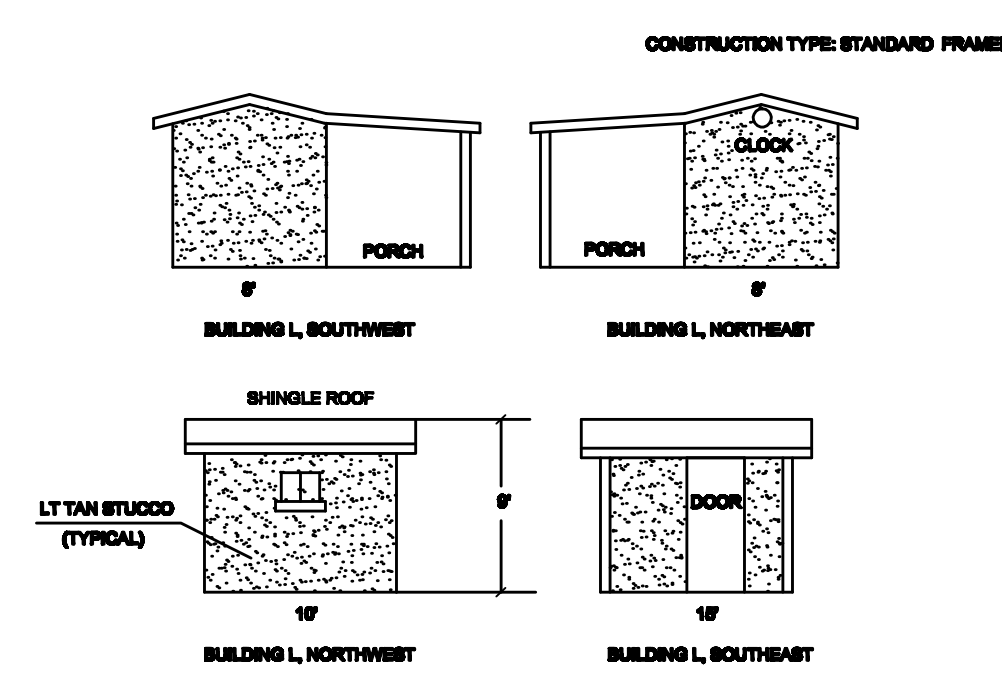
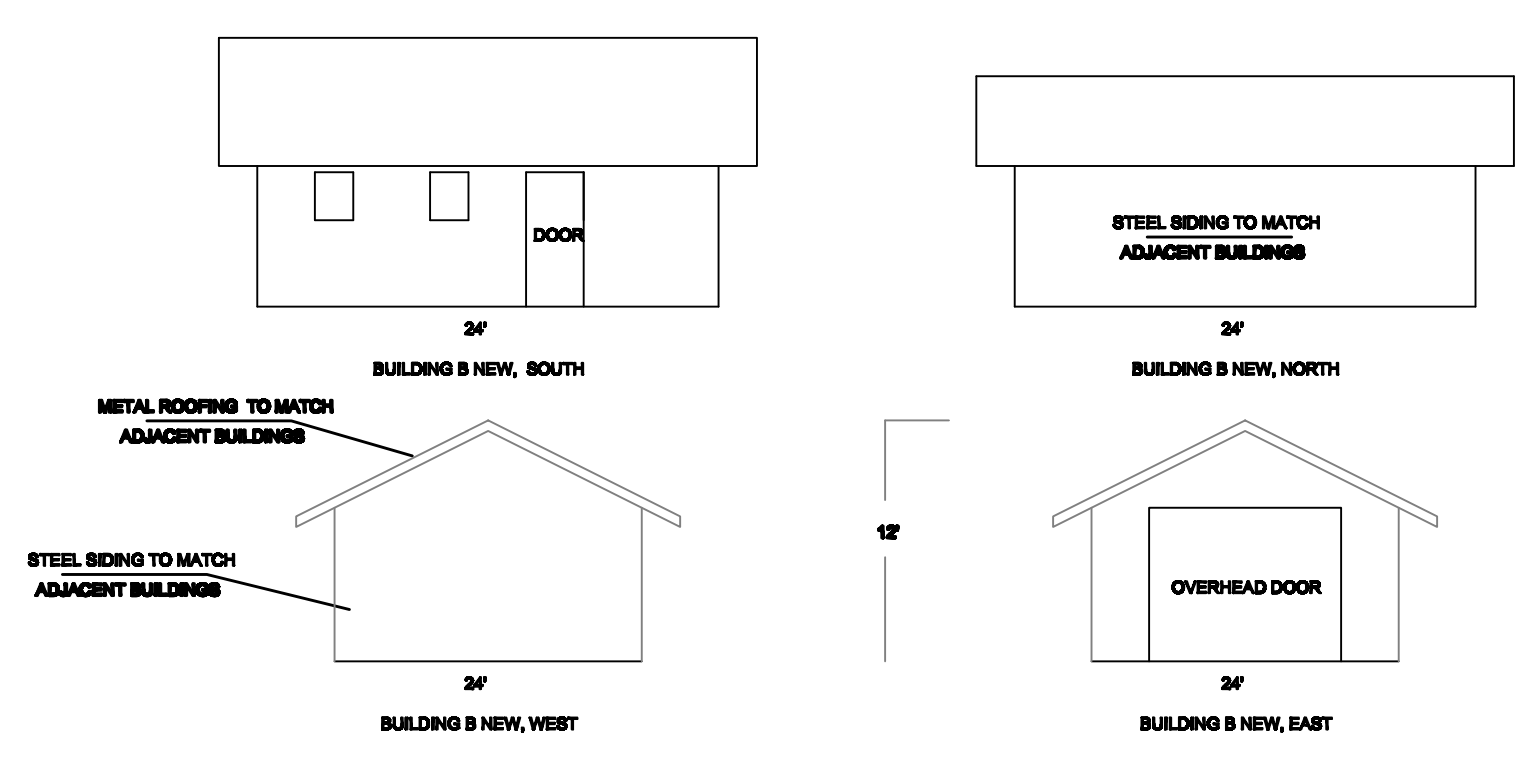


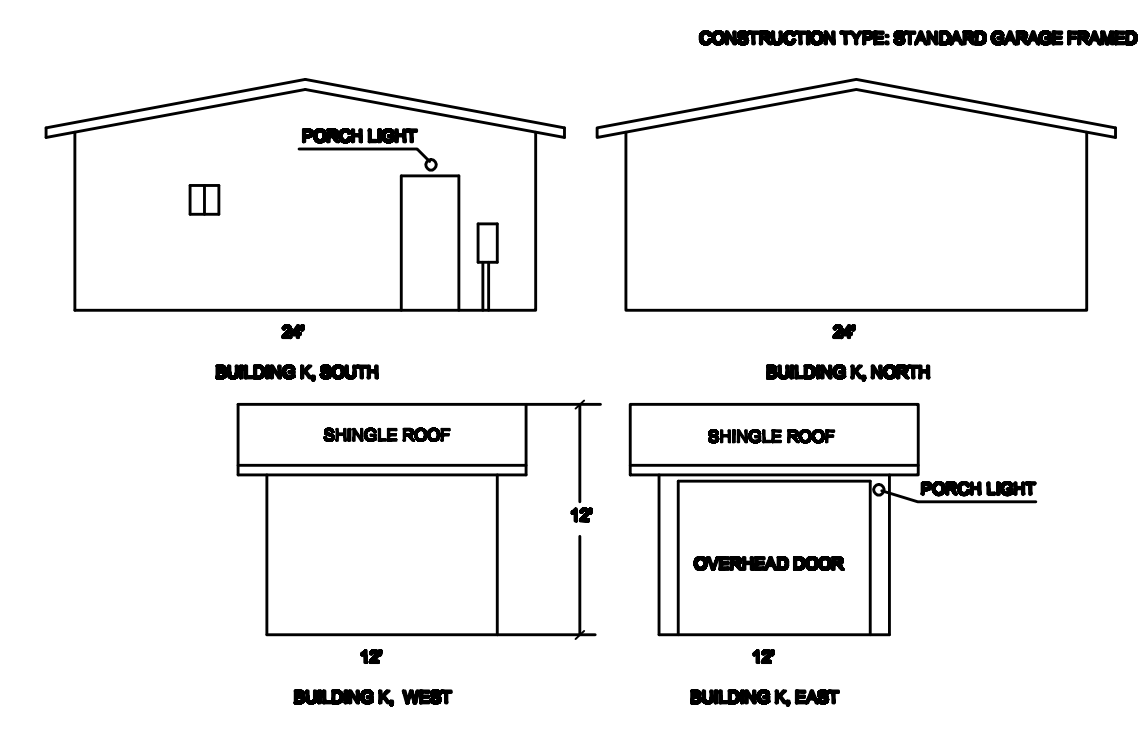
VICINITY MAP
NOT TO SCALE



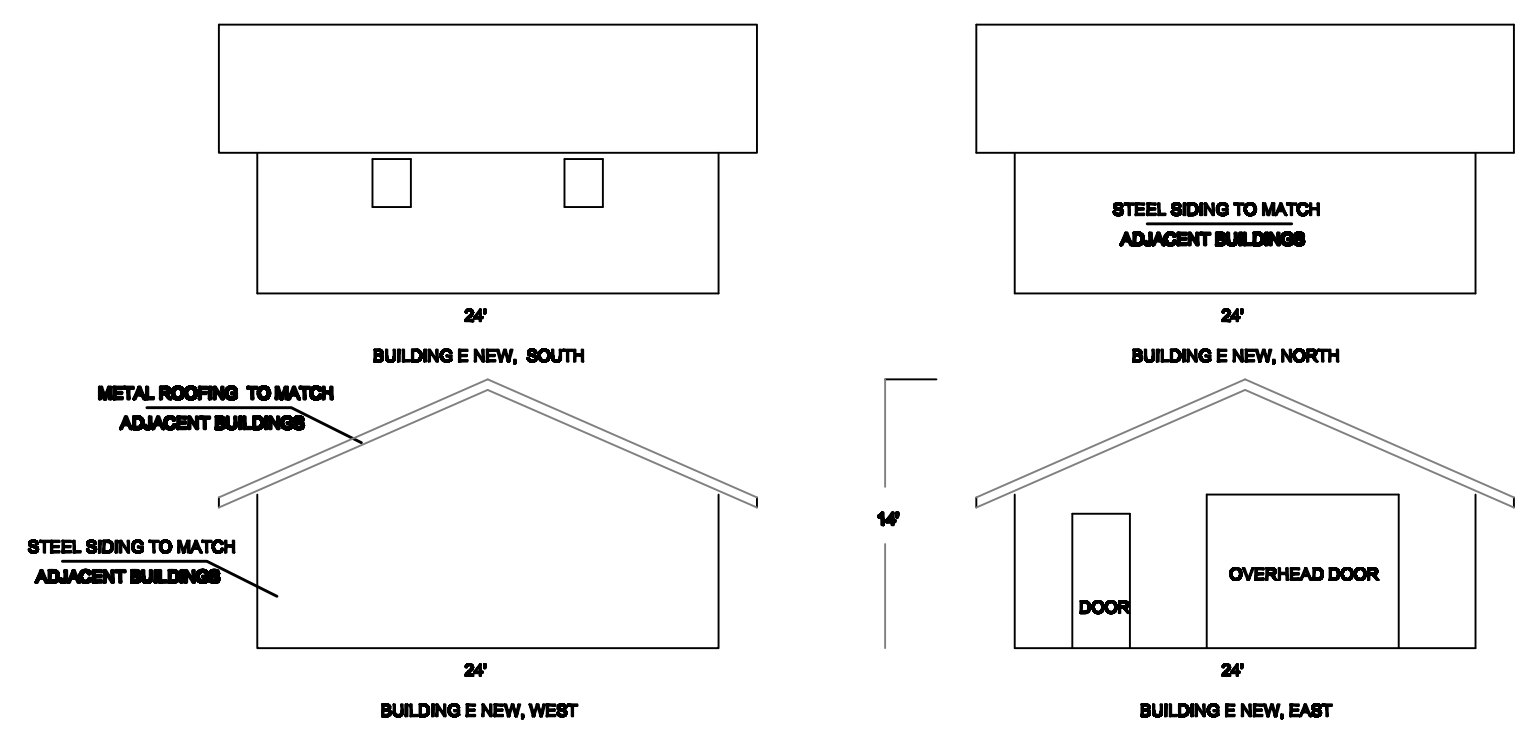
BUILDING L ELEVATIONS
GARDEN SHED



PROPOSED BUILDING B NEW ELEVATIONS
STORAGE BUILDING



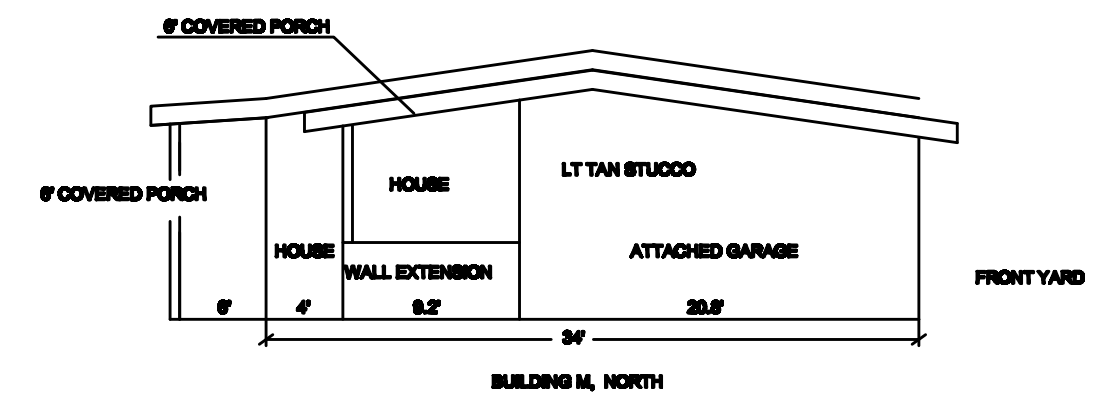
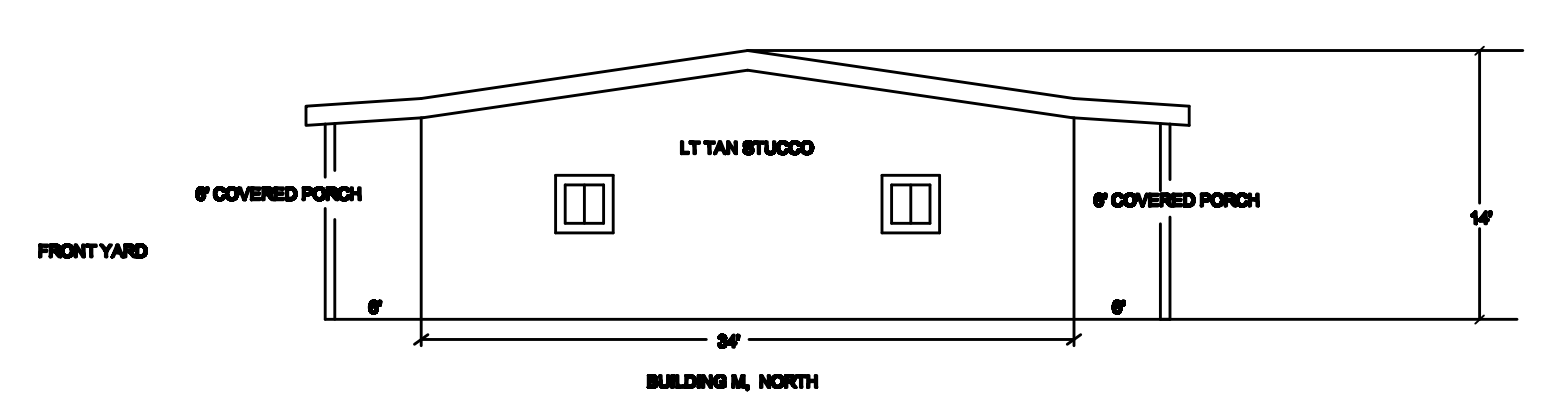
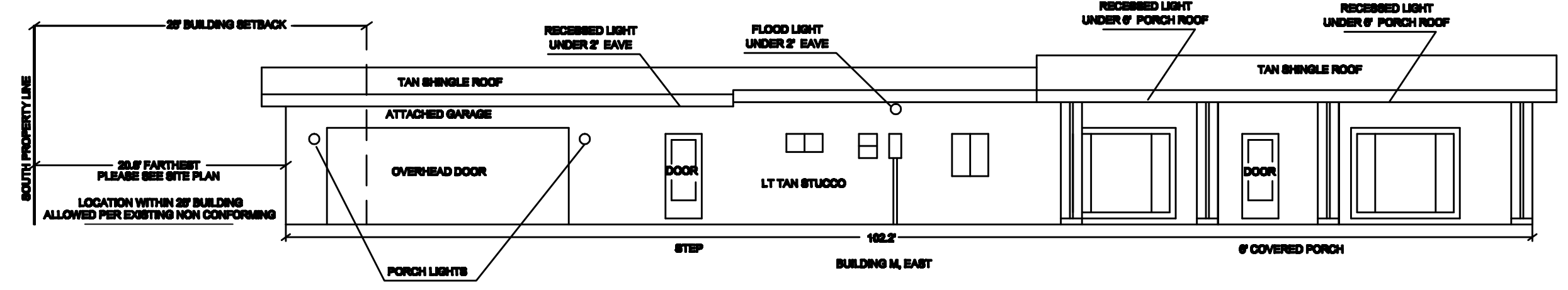
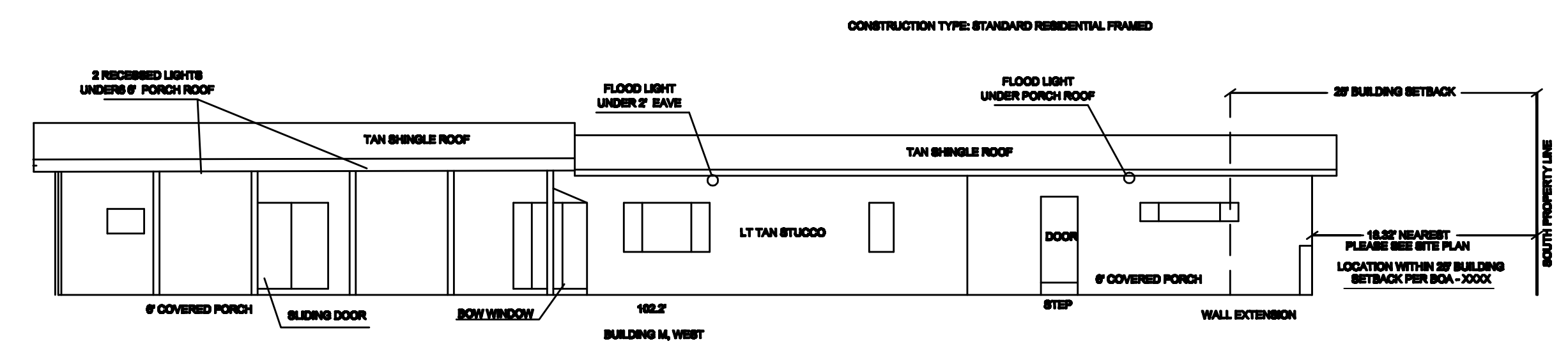
BUILDING K ELEVATIONS
DETACHED GARAGE



PROPOSED BUILDING E NEW ELEVATIONS
STORAGE BUILDING

BLDG.	STRUCTURAL FOOTPRINT	TOTAL	HEIGHT	USE	CONSTRUCTION TYPE
A	407 SF	407 SF	10.5'	STORAGE	POLE BARN
B OLD	360 SF	360 SF	9.5'	STORAGE	CONEX/CONTAINER
B NEW	384 SF	384 SF	12'	STORAGE	POLE BARN
C**	240 SF	240 SF	8'	TO BE DEMOLISHED	POLE BARN**
D	1440 SF	1440 SF	10'	STORAGE	POLE BARN
E OLD	672 SF	672 SF	12'	STORAGE	MOBILE HOME
E NEW	576 SF	576 SF	14'	STORAGE	POLE BARN
F	920 SF	920 SF	11.5'	STORAGE	CONEX/CONTAINER
G	315 SF	315 SF	8'	STORAGE	POLE BARN
H	3160 SF	3160 SF	22'	STORAGE	STEEL QUONSET
J	3160 SF	3160 SF	22'	STORAGE	STEEL QUONSET
K	288 SF	288 SF	13'	GARAGE	FRAME
L	80 SF	80 SF	9'	GARDEN SHED	FRAME
M	2514 SF	3479 SF	14'	OFFICE/STORAGE	FRAME
	572 SF	572 SF	13'	ATTACHED GARAGE	FRAME

- NOTES:**
- BLDGS B OLD, C AND E OLD WILL BE REMOVED. BLDG B OLD IS A CONEX AND WILL BE SOLD. BLDGS B NEW AND E NEW ARE PROPOSED. SEE NEW BLDG ELEVATIONS FOR BLDGS B NEW AND E NEW ON SHEET 2 OF THESE ELEVATIONS.
 - BLDG. M IS THE ORIGINAL HOUSE WITH 965 SF BASEMENT, CONSTRUCTED ON THIS PROPERTY PRE-1970.
 - BLDG M HAS AN ATTACHED 572 S.F. GARAGE, ADDED TO THE HOUSE PRE-1970. THIS GARAGE ENCLOSES INTO THE CURRENT 25' BUILDING SET BACK ON THE SOUTH PROPERTY LINE. THE GARAGE WAS CONSTRUCTED PRIOR TO A RIGHT OF WAY AGREEMENT FOR CALIFORNIA DRIVE, WHICH ADJUSTED THE PROPERTY LINE NORTHERLY. BLDG M ALLOWED AS EXISTING NON CONFORMING.
 - BLDGS A AND B OLD ARE LOCATED ENTIRELY WITHIN THE 25' BUILDING SETBACK ON THE NORTH PROPERTY LINE.
 BLDG A IS AN OPEN AIR POLE BARN/LEAN TO USED FOR STORAGE.
 BLDG B OLD IS A STEEL CONEX USED FOR SUPPLY STORAGE. BLDG B OLD SHALL BE REMOVED AND SOLD.
 5.** BLDG C IS PARTIALLY WITHIN THE 25' BUILDING SETBACK ON THE NORTH PROPERTY LINE, IT SHALL BE REMOVED.



BUILDING M ELEVATIONS
OFFICE, DRY STORAGE, ATTACHED GARAGE

GREENER PASTEURS, LLC
 7280 NEVADA LANE
 PPR2411
 SITE DEVELOPMENT PLAN
 BUILDING ELEVATIONS