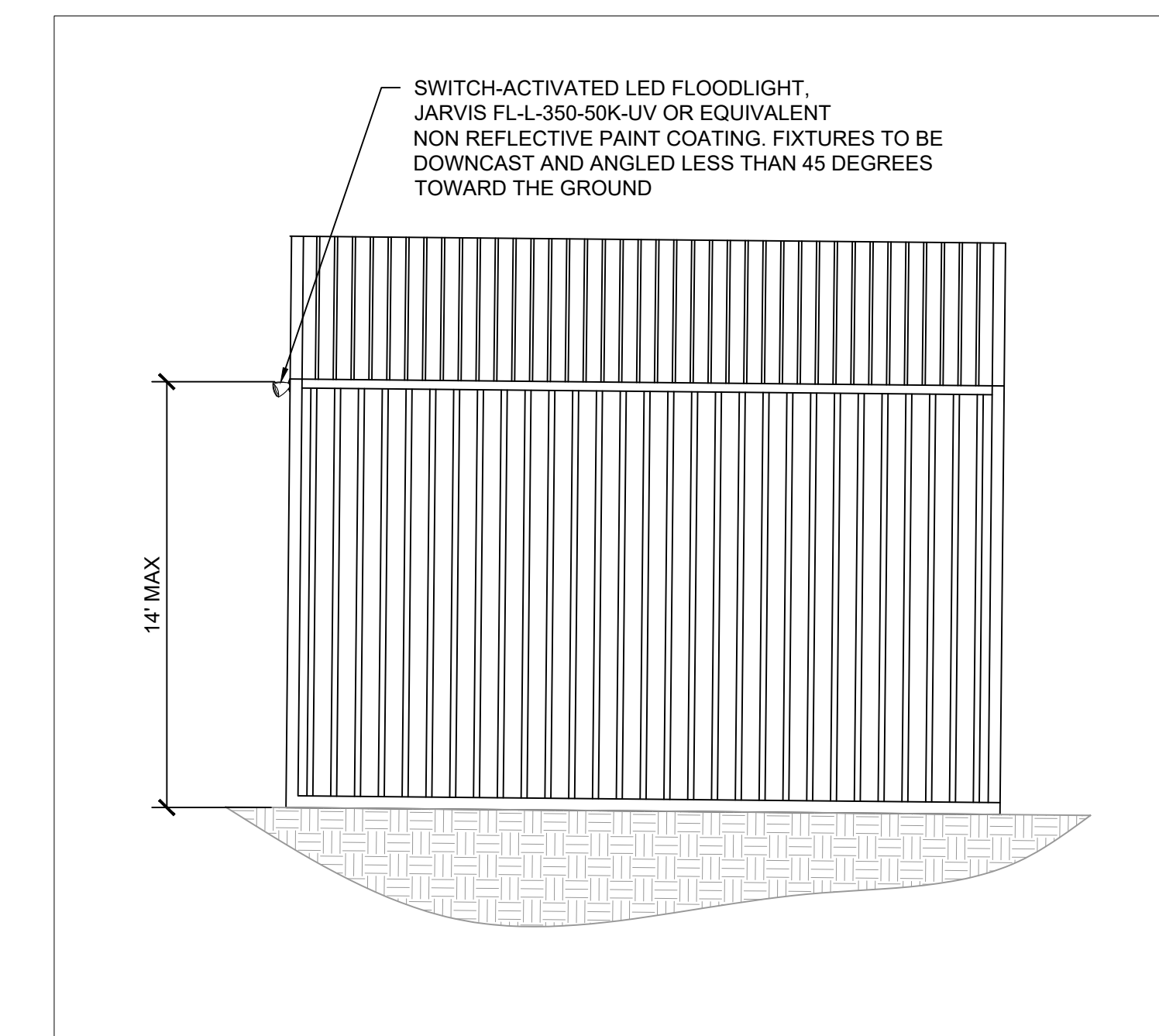
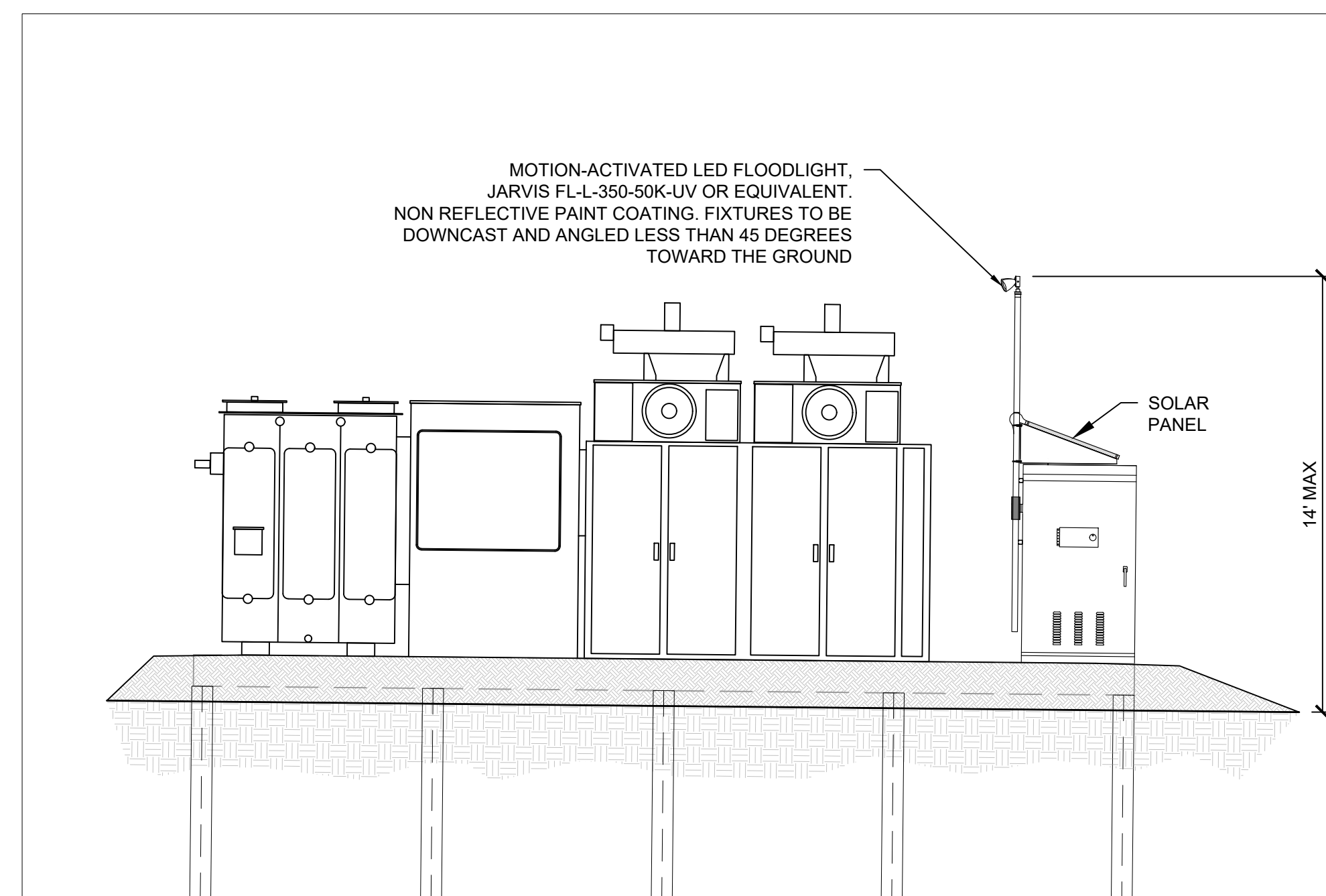
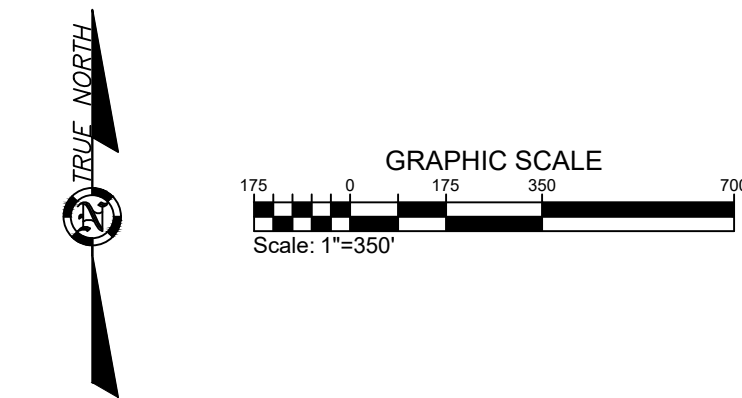
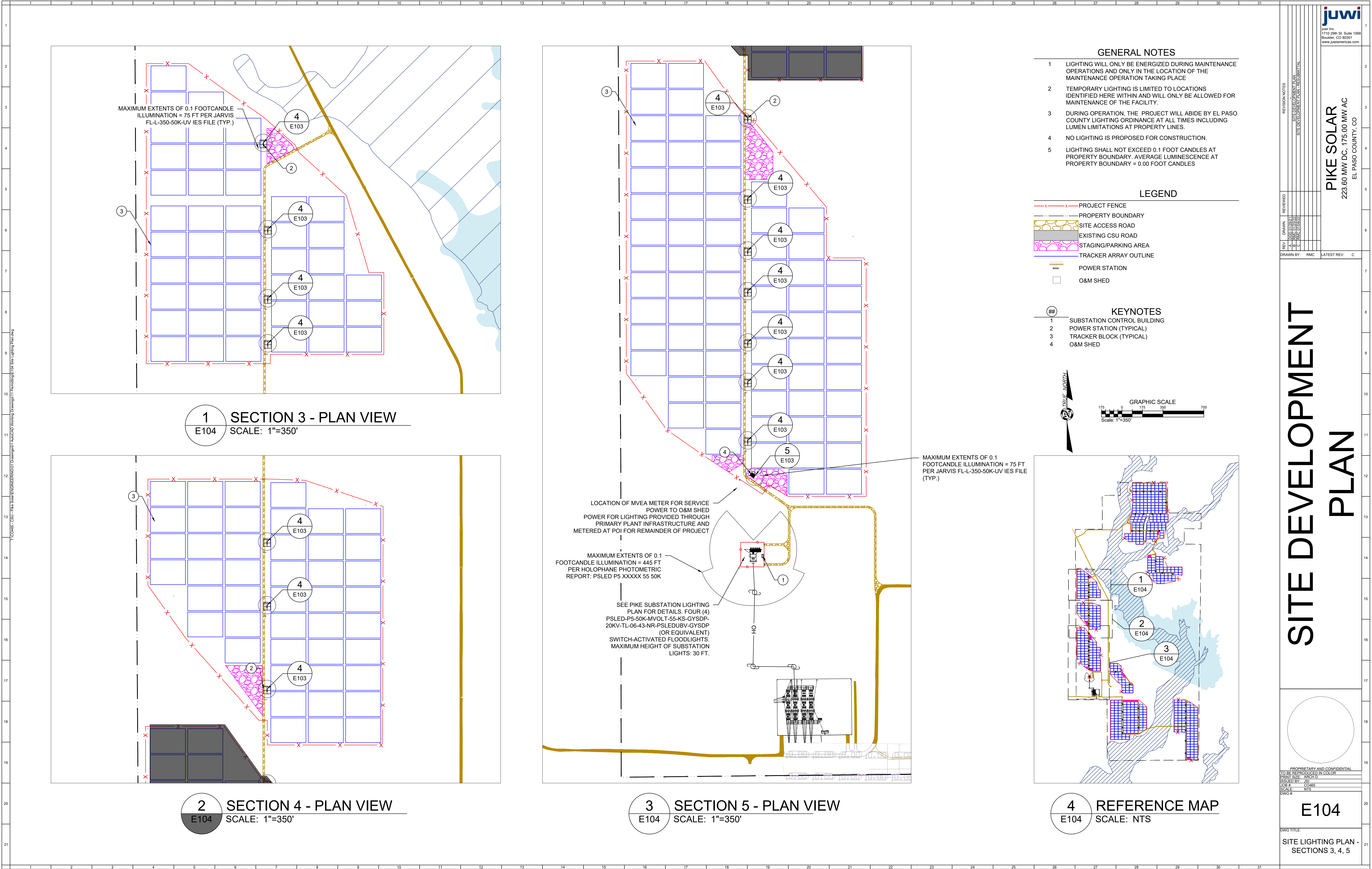


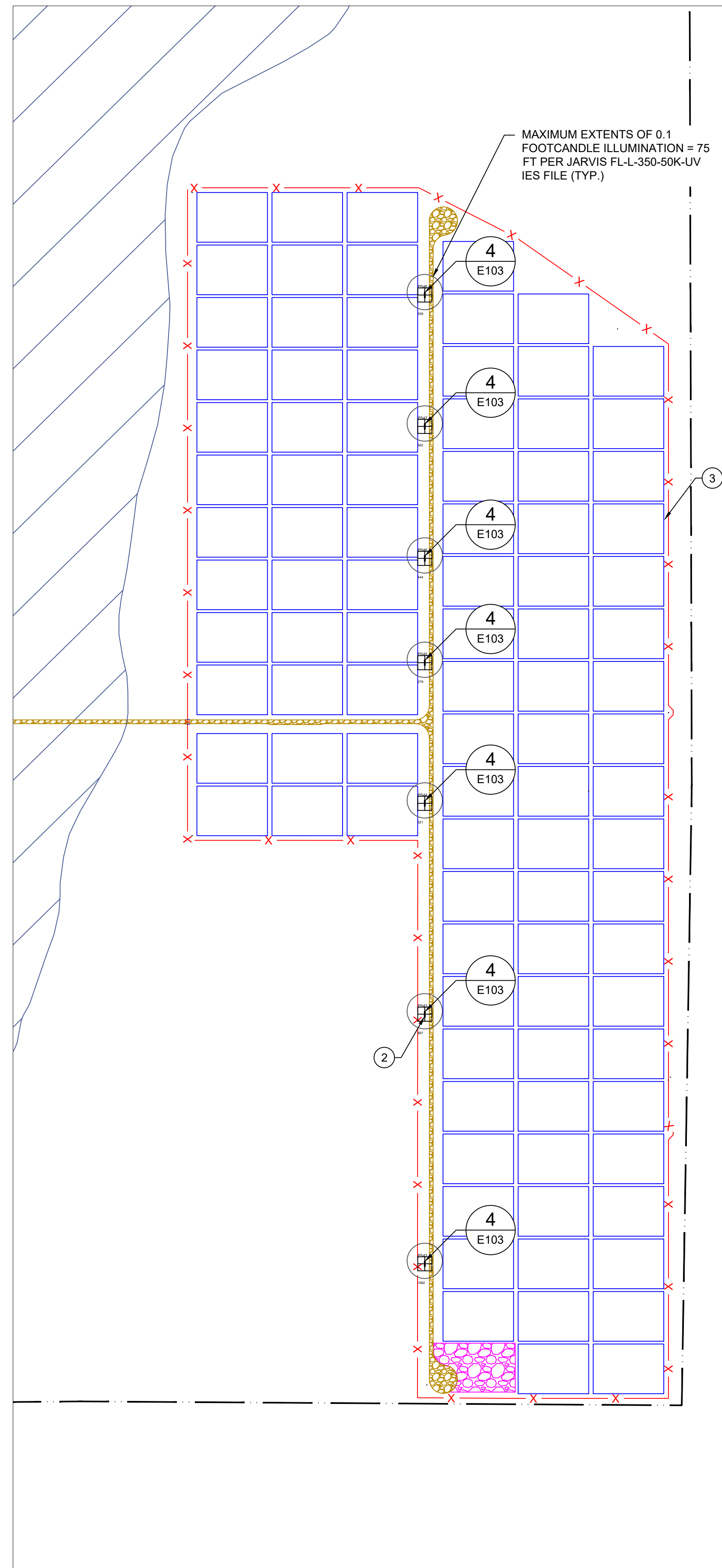
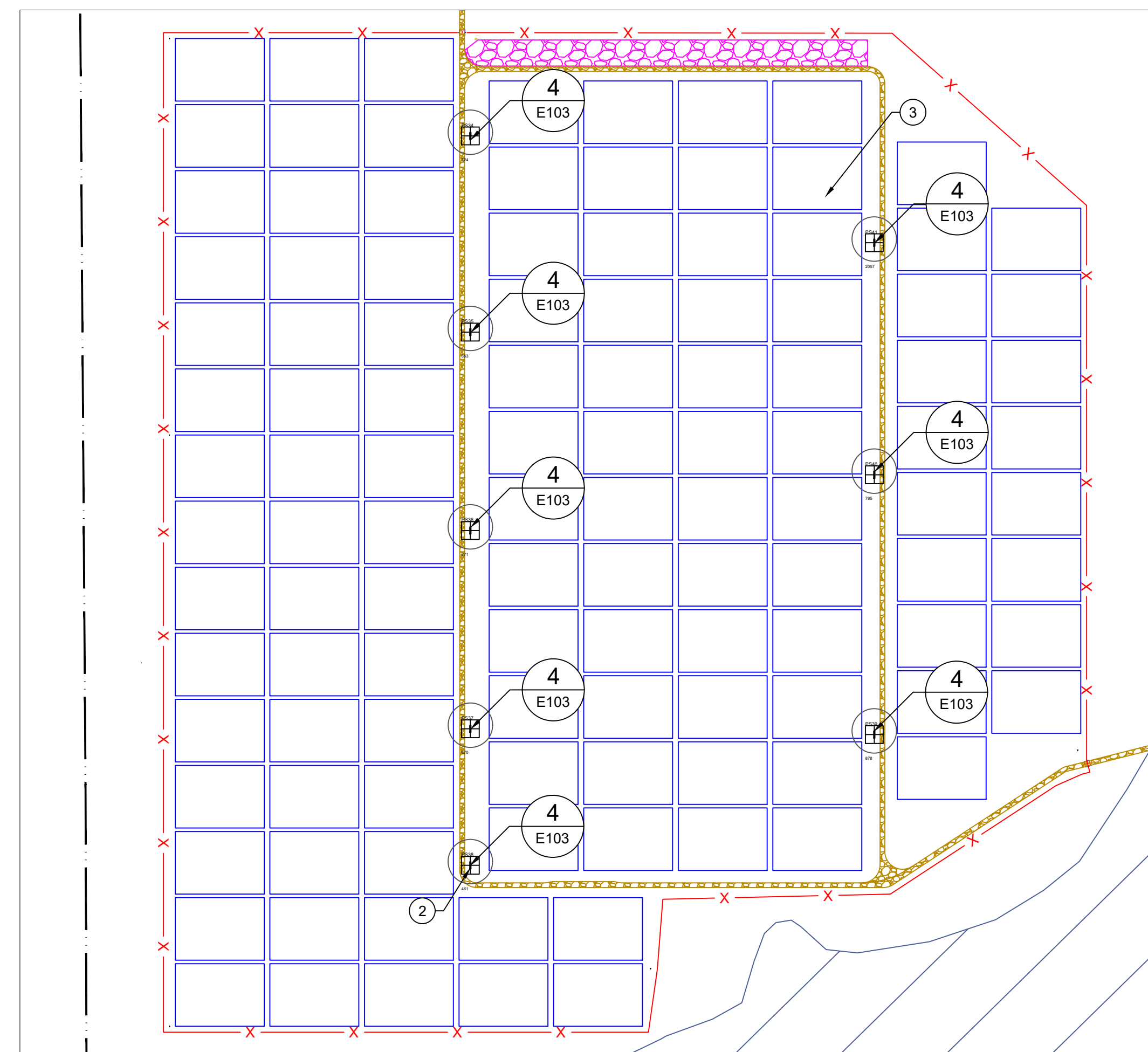
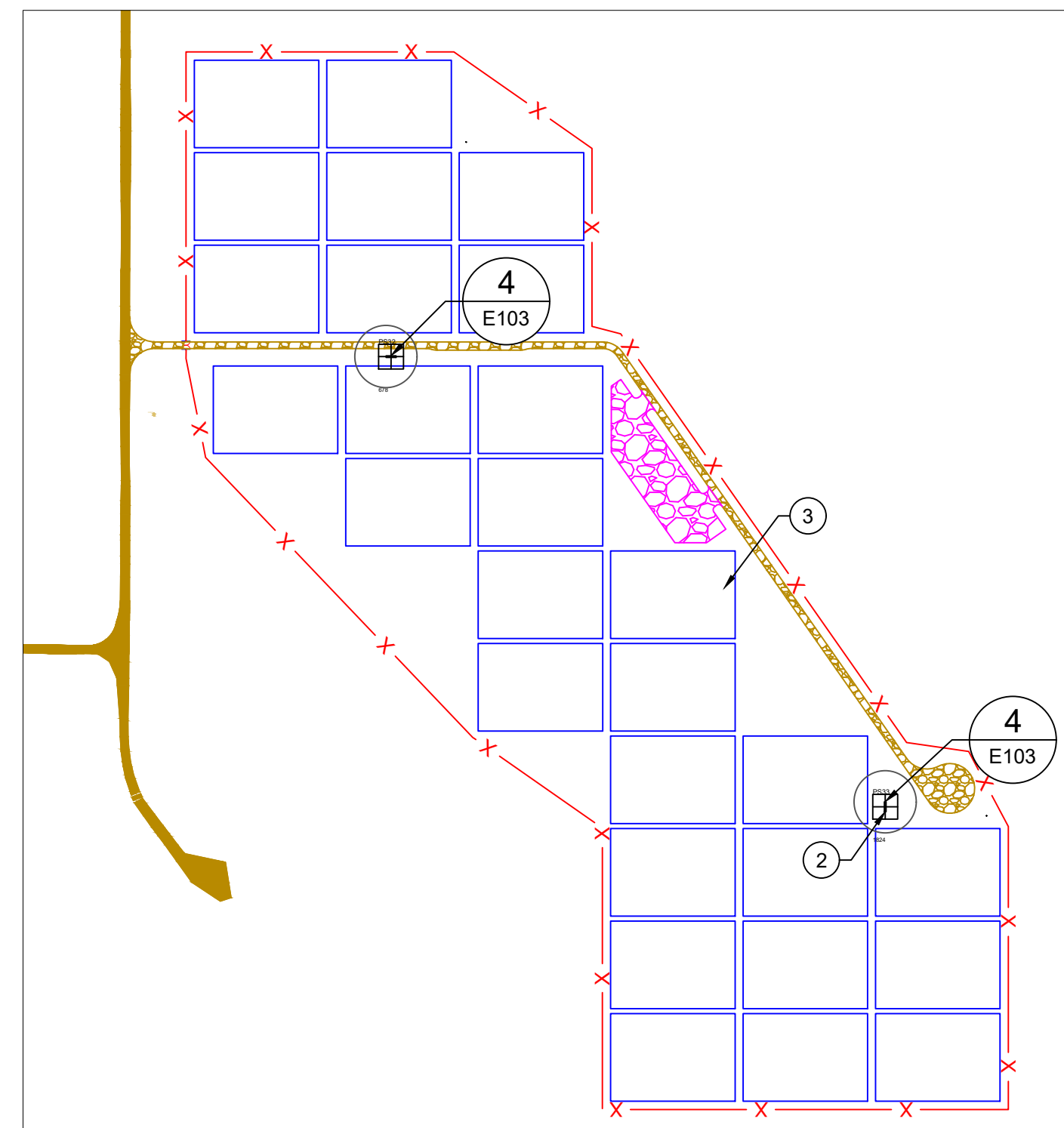
- ## GENERAL NOTES
-
- 1 LIGHTING WILL ONLY BE ENERGIZED DURING MAINTENANCE OPERATIONS AND ONLY IN THE LOCATION OF THE MAINTENANCE OPERATION TAKING PLACE
 - 2 TEMPORARY LIGHTING IS LIMITED TO LOCATIONS IDENTIFIED HERE WITHIN AND WILL ONLY BE ALLOWED FOR MAINTENANCE OF THE FACILITY.
 - 3 DURING OPERATION, THE PROJECT WILL ABIDE BY EL PASO COUNTY LIGHTING ORDINANCE AT ALL TIMES INCLUDING LUMEN LIMITATIONS AT PROPERTY LINES.
 - 4 NO LIGHTING IS PROPOSED FOR CONSTRUCTION.
 - 5 LIGHTING SHALL NOT EXCEED 0.1 FOOT CANDLES AT PROPERTY BOUNDARY. AVERAGE LUMINESCENCE AT PROPERTY BOUNDARY = 0.00 FOOT CANDLES

-
- LEG
- PROJECT FENCE
 - PROPERTY BOUNDARY
 - SITE ACCESS ROAD
 - EXISTING CSU ROAD
 - STAGING/PARKING AREA
 - TRACKER ARRAY OUTLINE
 - POWER STATION
 - O&M SHED

- | ## | KEYNOTES |
|----|-----------------------------|
| 1 | SUBSTATION CONTROL BUILDING |
| 2 | POWER STATION (TYPICAL) |
| 3 | TRACKER BLOCK (TYPICAL) |
| 4 | O&M SHED |







- ## GENERAL NOTES

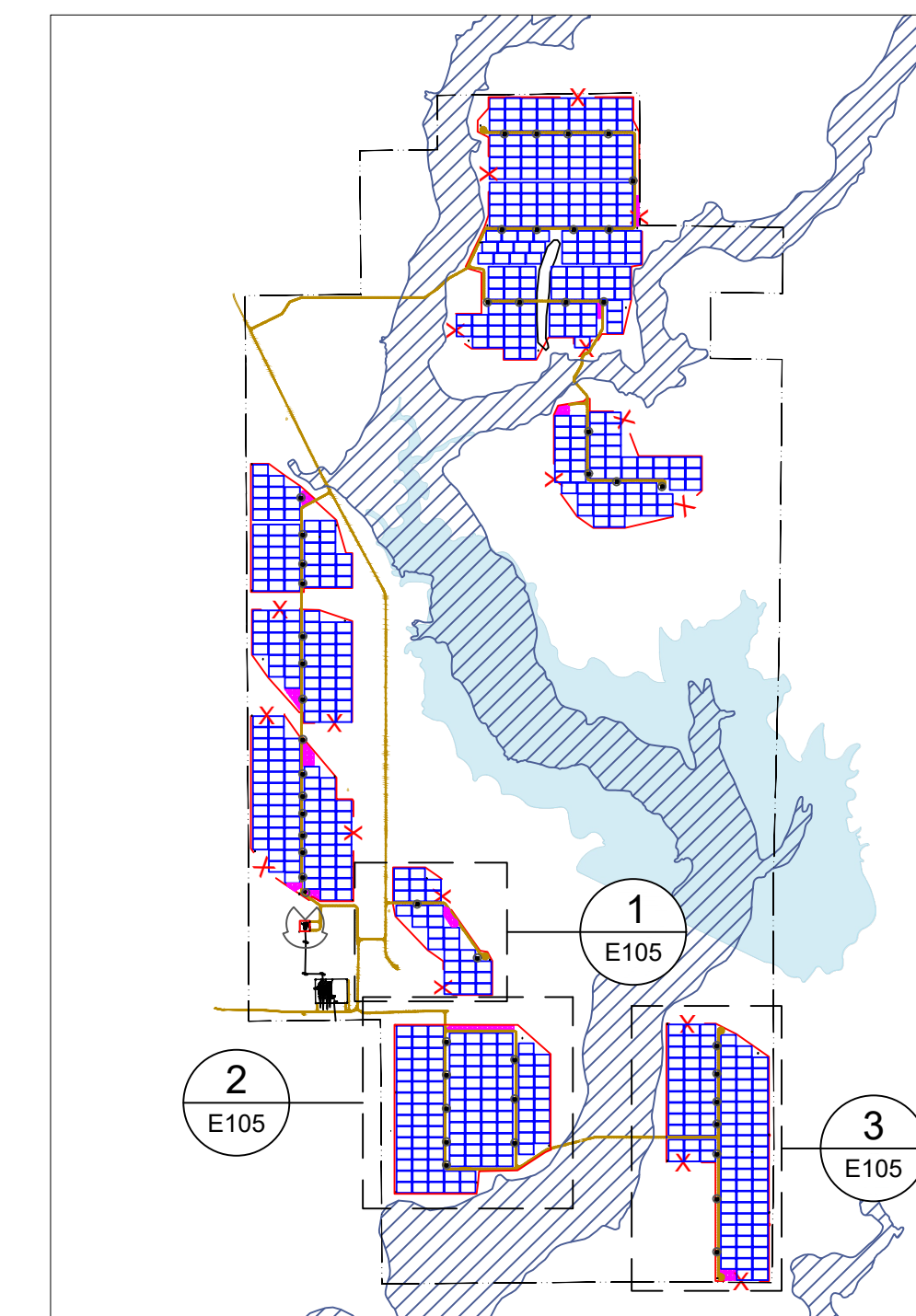
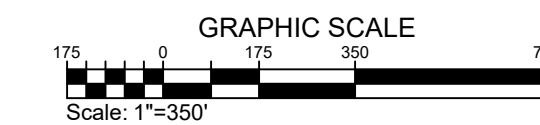
- 1 LIGHTING WILL ONLY BE ENERGIZED DURING MAINTENANCE
OPERATIONS AND ONLY IN THE LOCATION OF THE
MAINTENANCE OPERATION TAKING PLACE
- 2 TEMPORARY LIGHTING IS LIMITED TO LOCATIONS
IDENTIFIED HERE WITHIN AND WILL ONLY BE ALLOWED FOR
MAINTENANCE OF THE FACILITY.
- 3 DURING OPERATION, THE PROJECT WILL ABIDE BY EL PASO
COUNTY LIGHTING ORDINANCE AT ALL TIMES INCLUDING
LUMEN LIMITATIONS AT PROPERTY LINES.
- 4 NO LIGHTING IS PROPOSED FOR CONSTRUCTION.
- 5 LIGHTING SHALL NOT EXCEED 0.1 FOOT CANDLES AT
PROPERTY BOUNDARY. AVERAGE LUMINESCENCE AT
PROPERTY BOUNDARY = 0.00 FOOT CANDLES

LEGEND

-
- PROJECT FENCE
 PROPERTY BOUNDARY
 SITE ACCESS ROAD
 EXISTING CSU ROAD
 STAGING/PARKING AREA
 TRACKER ARRAY OUTLINE
 POWER STATION
 O&M SHED

KEYNOTES

- | | |
|---|-----------------------------|
| 1 | SUBSTATION CONTROL BUILDING |
| 2 | POWER STATION (TYPICAL) |
| 3 | TRACKER BLOCK (TYPICAL) |
| 4 | O&M SHED |



SITE DEVELOPMENT PLAN

PROPRIETARY AND CONFIDENTIAL
TO BE REPRODUCED IN COLOR
PRINT SIZE: ARCH D
ISSUED BY: JSI
JOB #: C0465
SCALE: AS SHOWN
DWG. #:

E105

DWG TITLE:

SITE LIGHTING PLAN -
SECTIONS 6, 7, 8

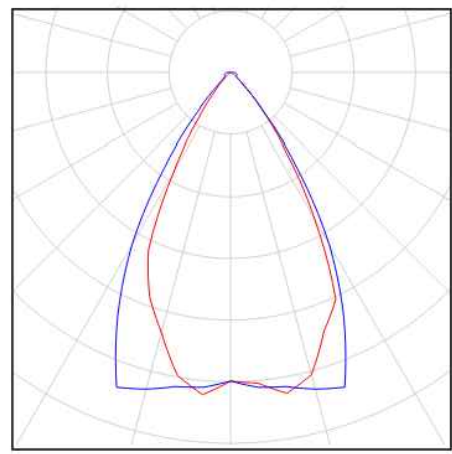
Site 1

Quantity Luminaire (Luminous emittance)

4 Holophane - PSLED P1 XXXXX 55 50K Predator Small LED Floodlight with P1 Performance Package, Flood (5x5) (formally FL), 5000K CCT
Luminous emittance 1
Fitting: 1x
Absolute photometry
Luminaire luminous flux: 5847 lm
Power: 37.0 W
Luminous efficacy: 158.0 lm/W

Colorimetric data
1x: CCT 3000 K, CRI 100

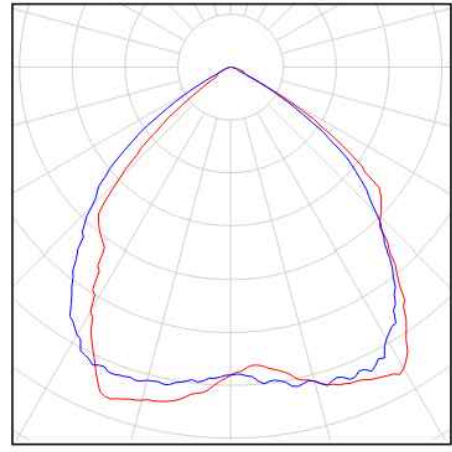
See our luminaire catalog for an image of the luminaire.



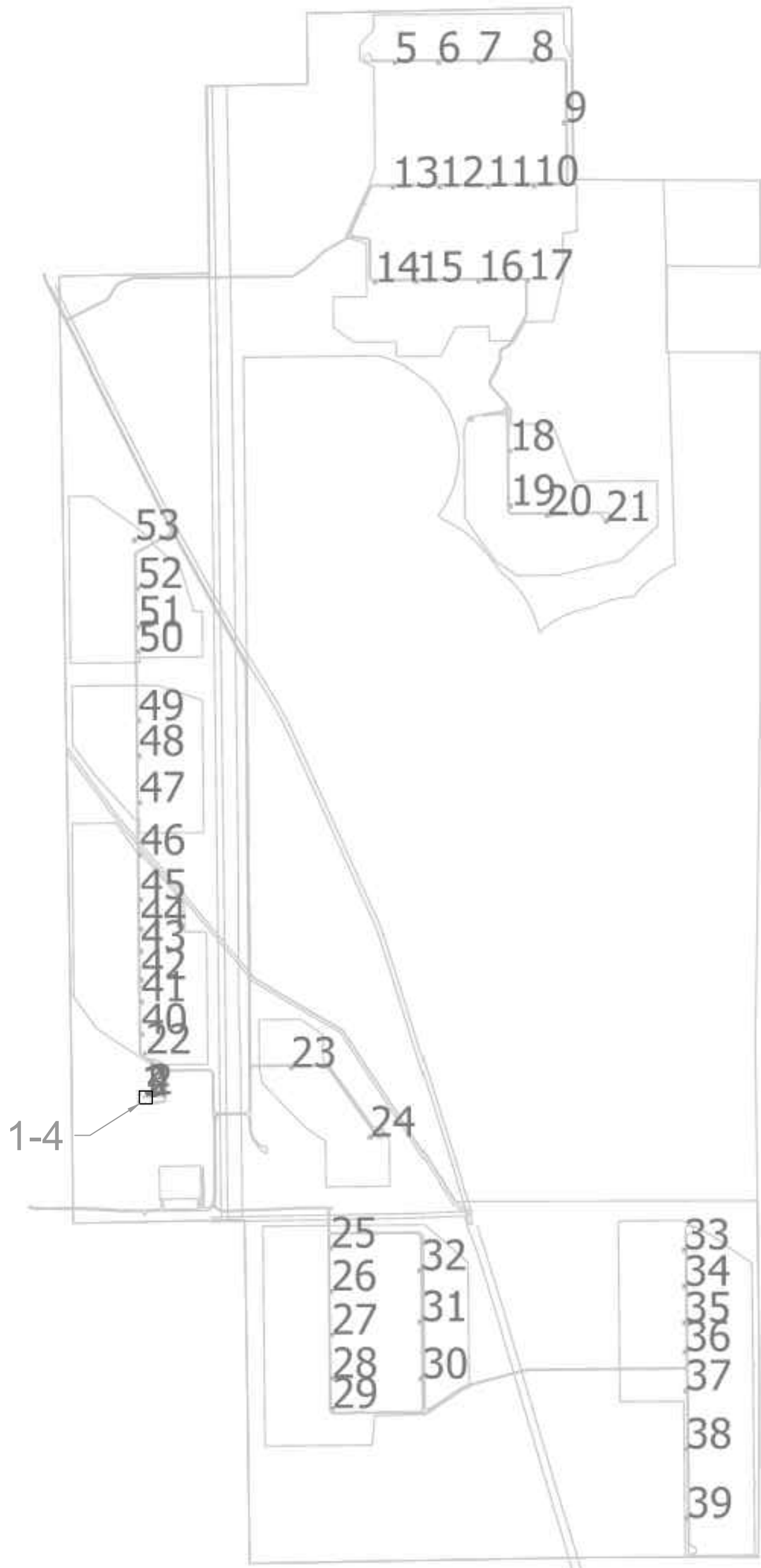
63 Jarvis Lighting - FL-L-350-50K-UV-BRZ-SFM
Luminous emittance 1
Fitting: 1x
Absolute photometry
Luminaire luminous flux: 14906 lm
Power: 117.3 W
Luminous efficacy: 127.1 lm/W

Colorimetric data
1x: CCT 3000 K, CRI 100

See our luminaire catalog for an image of the luminaire.



Total lamp luminous flux: 962466 lm, Total luminaire luminous flux: 962466 lm, Total Load: 7537.9 W, Luminous efficacy: 127.7 lm/W



LIGHTING LAYOUT PLAN

Holophane PSLED P1 XXXXX 55 50K Predator Small LED Floodlight with P1 Performance Package, Flood (5x5) (formally FL), 5000K CCT

No.	X [ft]	Y [ft]	Mounting height [ft]	Light loss factor
1	2217.218	8071.337	30.000	0.80
2	2364.033	8072.157	30.000	0.80
3	2265.609	8036.068	30.000	0.80
4	2315.642	8036.068	30.000	0.80

Jarvis Lighting FL-L-350-50K-UV-BRZ-SFM

No.	X [ft]	Y [ft]	Mounting height [ft]	Light loss factor
5	6120.835	23904.373	10.000	0.80
6	6760.234	23910.574	10.000	0.80
7	7388.355	23916.666	10.000	0.80
8	8197.075	23924.510	10.000	0.80
9	8701.633	22991.832	10.000	0.80
10	8227.955	22009.543	10.000	0.80
11	7522.482	22002.699	10.000	0.80
12	6782.353	21995.522	10.000	0.80
13	6086.147	21988.770	10.000	0.80
14	5813.966	20532.680	10.000	0.80
15	6453.173	20538.879	10.000	0.80
16	7378.672	20547.855	10.000	0.80
17	8140.906	20566.197	10.000	0.80
18	7861.984	17970.110	10.000	0.80
19	7870.162	17126.957	10.000	0.80
20	8431.830	16972.190	10.000	0.80
21	9339.558	16880.152	10.000	0.80
22	2297.193	8694.991	13.123	0.80
23	4526.209	8486.273	10.000	0.80
24	5741.196	7423.169	10.000	0.80
25	5138.389	5742.806	10.000	0.80
26	5144.820	5079.746	10.000	0.80
27	5151.326	4409.026	10.000	0.80
28	5157.825	3738.866	10.000	0.80
29	5162.300	3277.511	10.000	0.80
30	6523.465	3732.469	10.000	0.80
31	6514.949	4610.530	10.000	0.80
32	6507.341	5394.963	10.000	0.80
33	10546.353	5713.817	10.000	0.80
34	10551.776	5154.669	10.000	0.80
35	10557.222	4593.149	10.000	0.80
36	10561.527	4149.294	10.000	0.80
37	10567.330	3550.859	10.000	0.80
38	10576.031	2653.856	10.000	0.80
39	10586.343	1591.828	10.000	0.80
40	2235.358	9002.708	10.000	0.80
41	2230.508	9502.786	10.000	0.80
42	2227.232	9840.513	10.000	0.80
43	2222.990	10277.884	10.000	0.80
44	2219.626	10624.807	10.000	0.80
45	2215.302	11070.572	10.000	0.80
46	2208.656	11755.872	10.000	0.80
47	2200.823	12563.475	10.000	0.80
48	2193.881	13279.300	10.000	0.80
49	2188.609	13822.864	10.000	0.80
50	2178.350	14880.590	10.000	0.80
51	2174.624	15264.756	10.000	0.80
52	2168.900	15854.921	10.000	0.80
53	2123.743	16592.709	10.000	0.80



PSLED
Predator Small LED



Catalog Number

Notes

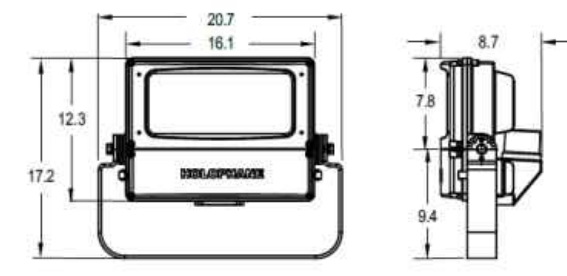
Type

The Predator LED is a robust, sustainable solution for any flood lighting application. The PSLED offers lumen packages for direct replacement of 100-1,000 watt HPS floods. With energy savings exceeding 60% and expected service life over 20 years, Predator LED luminaires excel at meeting the challenges associated with flood lighting. The PSLED combines robust mechanical design features with the optical expertise, visual comfort and permanence of prismatic glass.

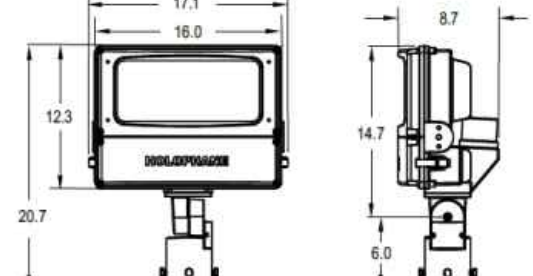
- Mechanical**
 - Rugged grade A360 decaat aluminum (<1% copper)
 - Tool less access with stainless steel latches available
 - Rigorous 5-stage pretreatment polyester topcoat to ensure maximum durability that achieves a scribe creepage rating of 8 after 5,000 hours of salt spray
 - Adjustable knuckle-mount option, designed to fit 2.375 inch to 2.875 inch beam with wireway access door
 - Adjustable yoke mount option available in galvanized or stainless steel finish
 - Further security holds cover in place during installation
 - All Mountings are 36 vibration rated per ANSI C136.31
 - P66 per IEC60608-2-3
- Electrical**
 - Standard surge protection is 20kV/10kA "Extreme Level" per ANSI C136.2
 - Optimal surge protection is 10kV/5kA per ANSI C136.2
 - LED light engines are rated > 100,000 at 25°C, L70
 - Electronic driver has an expected life of > 100,000 hours at 25°C
 - Rated for -40°C (-40°F) minimum ambient
 - Programmable electronic driver with 0-10V control leads
 - Driver voltage options: 120-277V 50/60 Hz and 347 50/60 Hz and 480V 50/60 Hz
 - Simple and double flexing options available
 - 0-10V continuous dimming functionality is standard. Step dimming is available with the DALI driver option. Dimming control cable accomplished via DALI RS485 options integrally or via photocontrol installed on P7 receptacle option.
- Optical**
 - Performance is comparable to 100-400 watt HPS or 175-1,000 watt MH
 - Beneficial prismatic glass ensures longevity and minimizes dirt depreciation and improves visual comfort
- Warranty**
 - 5-year limited warranty. This is the only warranty provided and no other statements in this specification sheet create any warranty of any kind. All other express and implied warranties are disclaimed. Complete warranty terms located at: www.aaculitybrands.com/support/warranty/terms-and-conditions
- Controls**
 - 7 pin rotatable NEMA photocontrol receptacle
 - 3 pin rotatable NEMA photocontrol receptacle
 - Premium solid-state locking-style photocontrol - 10 year rated life
 - Extreme long life solid-state locking-style photocontrol - 20 year rated life
 - Field adjustable output
 - SLight Air motion and daylight sensor
 - DALI driver option (consult with factory)
- Certification & Standards**
 - CSA Certified to US and Canadian standards for wet location
 - Marine environment listed with stainless steel yoke selection and without photo control receptacle.
 - Suitable for operation in an ambient temperature up to 40°C (104°F) for standard product.
 - Designlights Consortium (DLC) qualified product. Not all versions of this product may be DLC qualified. Please check the DLC Qualified Products List at: www.designlights.org/DLC to confirm which versions are qualified.



DIMENSIONAL DATA



Yoke Mount Luminaire EPA of 1.76ft² and max weight 30 lbs



Tenon Mount Luminaire EPA of 1.89ft² and max weight 28 lbs

FL Series
LED Flood Luminaire



Jarvis FL Series

- Glass lens will never yellow
- UV-resistant powdercoat finish avoids fading and flaking
- Die-cast housing is constructed to prevent dirt from building up
- 120-277V input voltage
- Built in surge protection

Competitors' Products

- Plastic lens will yellow over time, especially if luminaire is positioned in direct sunlight
- Powdercoat may fade or flake
- Complicated heat sink designs trap dirt and debris
- Single input voltage
- Surge protection not included

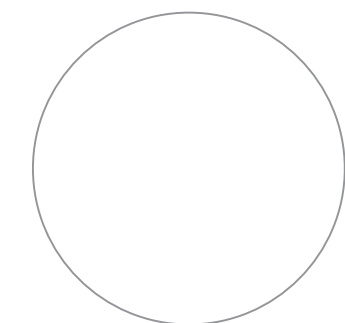


Most Popular Models and Specifications:

Model	Description	Input	Power	Lumens	CCT	CRI	PF
FL-S-100-50K-UV-BRZ-KM	Knuckle Mount	120-277V 50/60Hz	30W	4,110	5000K	≥ 70	≥ 0.9
FL-S-100-50K-UV-BRZ-KM-PC	Knuckle Mount w/Integral Photo Cell	120-277V 50/60Hz	30W	4,110	5000K	≥ 70	≥ 0.9
FL-S-150-50K-UV-BRZ-KM	Knuckle Mount	120-277V 50/60Hz	45W	5,850	5000K	≥ 70	≥ 0.9
FL-S-150-50K-UV-BRZ-KM-PC	Knuckle Mount w/Integral Photo Cell	120-277V 50/60Hz	45W	5,850	5000K	≥ 70	≥ 0.9
FL-S-200-50K-UV-BRZ-KM	Knuckle Mount	120-277V 50/60Hz	60W	7,380	5000K	≥ 70	≥ 0.9
FL-S-200-50K-UV-BRZ-KM-PC	Knuckle Mount w/Integral Photo Cell	120-277V 50/60Hz	60W	7,380	5000K	≥ 70	≥ 0.9
FL-L-300-50K-UV-BRZ-SFM	Slipfitter Mount	120-277V 50/60Hz	90W	12,060	5000K	≥ 70	≥ 0.9
FL-L-300-50K-UV-BRZ-SFM-PC	Slipfitter Mount w/Integral Photo Cell	120-277V 50/60Hz	90W	12,060	5000K	≥ 70	≥ 0.9
FL-L-350-50K-UV-BRZ-SFM	Slipfitter Mount	120-277V 50/60Hz	120W	15,240	5000K	≥ 70	≥ 0.9
FL-L-350-50K-UV-BRZ-SFM-PC	Slipfitter Mount w/Integral Photo Cell	120-277V 50/60Hz	120W	15,240	5000K	≥ 70	≥ 0.9



SITE DEVELOPMENT
PLAN



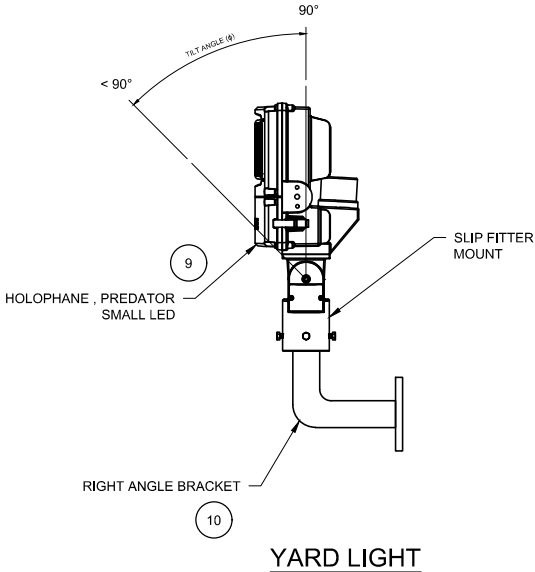
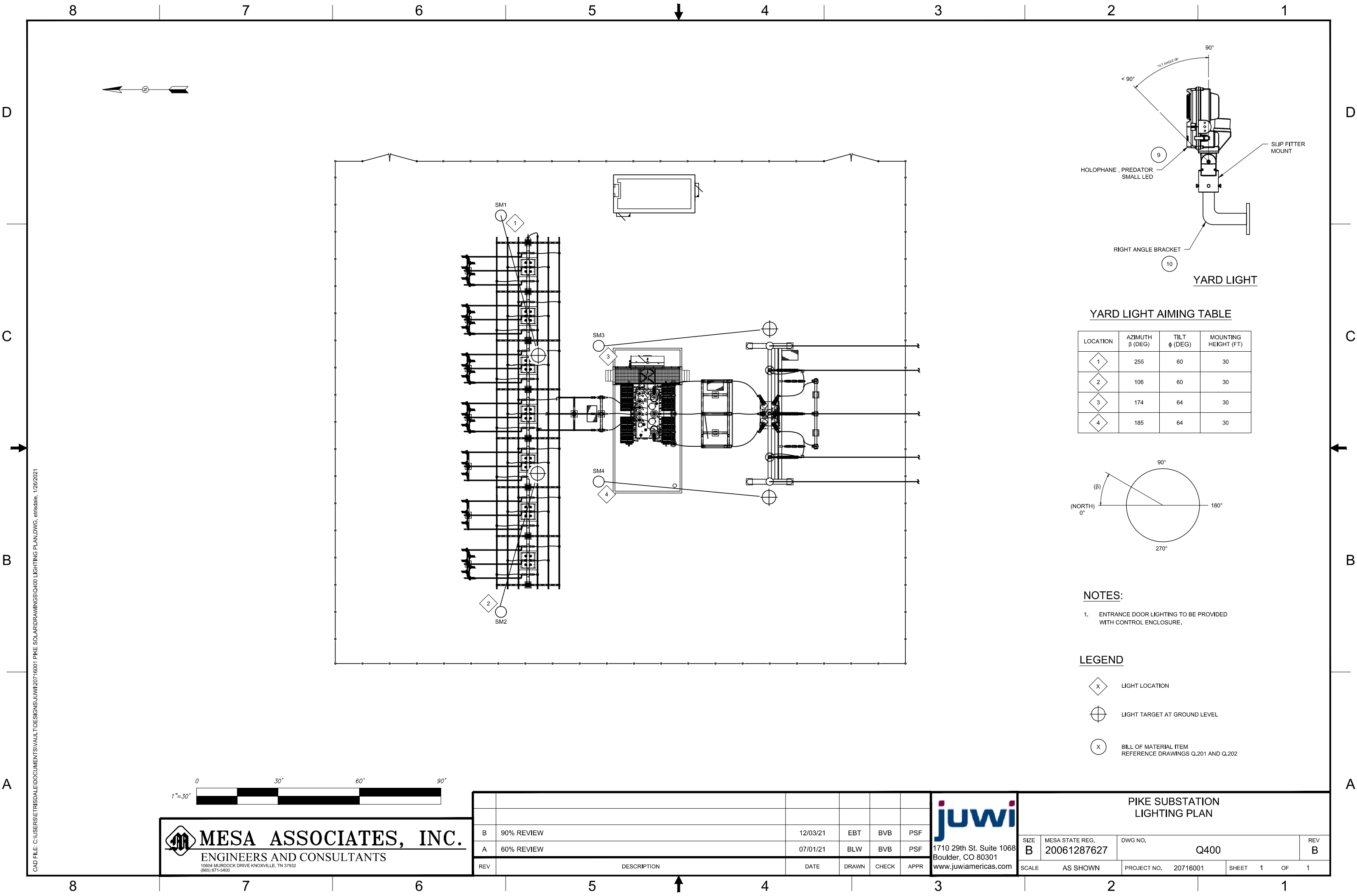
PROPRIETARY AND CONFIDENTIAL
TO BE REPRODUCED IN COLOR
DESIGNED BY: JBL
DRAWN BY: JBL
SCALE: NTS
DWG #

E109

DWG TITLE:
SITE LIGHTING -
SCHEDULES

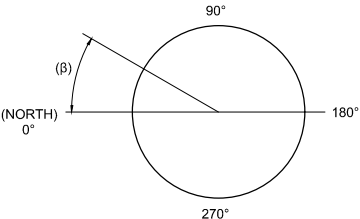


PIKE SOLAR
223.60 MW DC, 175.00 MW AC
EL PASO COUNTY, CO



YARD LIGHT AIMING TABLE

LOCATION	AZIMUTH β (DEG)	TILT φ (DEG)	MOUNTING HEIGHT (FT)
1	255	60	30
2	106	60	30
3	174	64	30
4	185	64	30



NOTES:

1. ENTRANCE DOOR LIGHTING TO BE PROVIDED WITH CONTROL ENCLOSURE.

LEGEND

- ⬡ LIGHT LOCATION
- ⊕ LIGHT TARGET AT GROUND LEVEL
- ⊗ BILL OF MATERIAL ITEM
REFERENCE DRAWINGS Q.201 AND Q.202

MESA ASSOCIATES, INC.

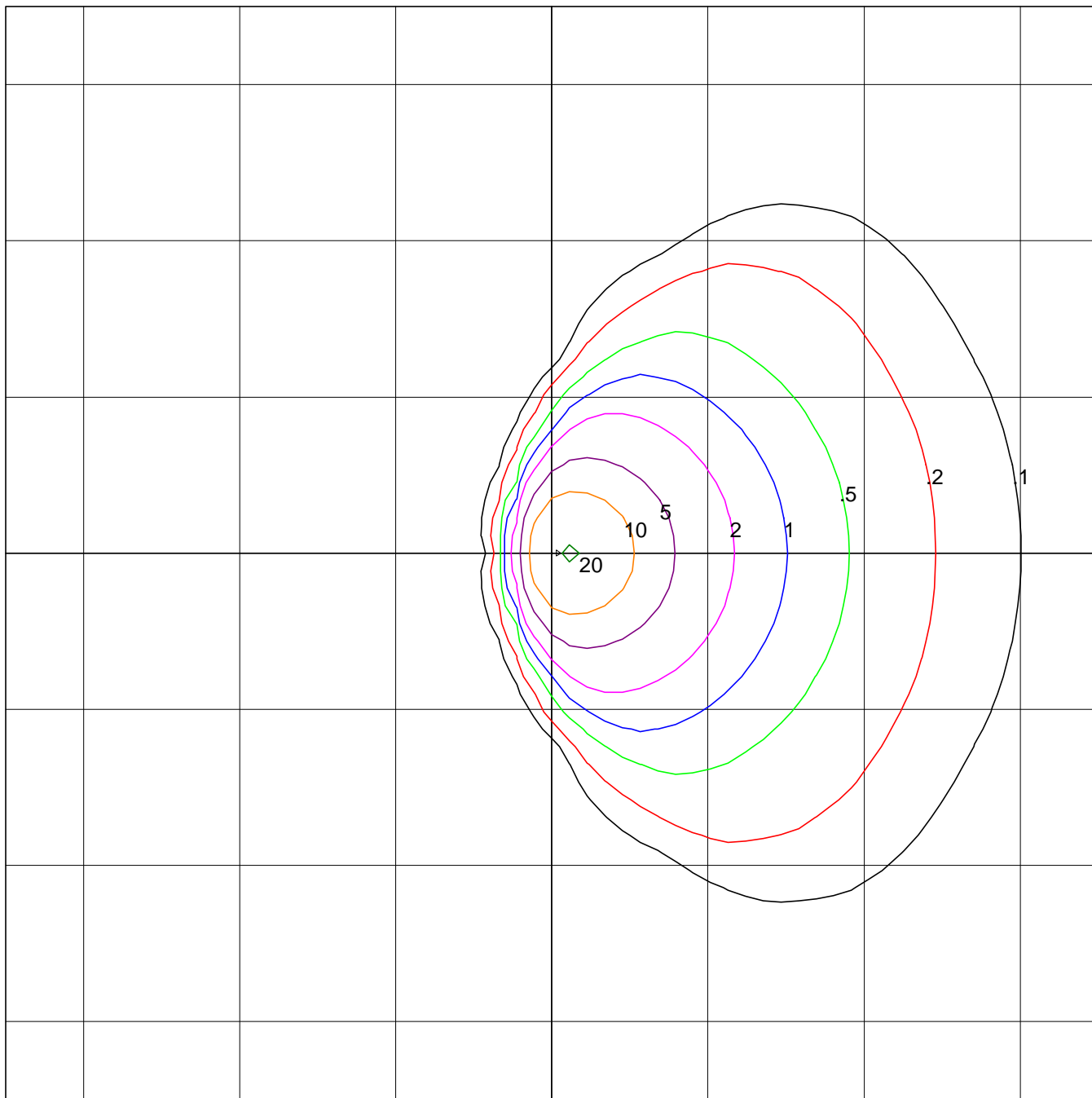
ENGINEERS AND CONSULTANTS

10604 MURDOCK DRIVE KNOXVILLE, TN 37932
(865) 671-5400

REV	DESCRIPTION	DATE	DRAWN	CHECK	APPR
B	90% REVIEW	12/03/21	EBT	BVB	PSF
A	60% REVIEW	07/01/21	BLW	BVB	PSF

1710 29th St. Suite 1068
Boulder, CO 80301
www.juwiamerica.com

PIKE SUBSTATION LIGHTING PLAN					
SIZE B	MESA STATE REG. 20061287627	DWG NO. Q400	REV B		
SCALE AS SHOWN	PROJECT NO. 20716001	SHEET 1	OF 1		



Lithonia Lighting
OFL2 LED P2 40K MVOLT
General Purpose Flood size 2 w/6 COBs
LED

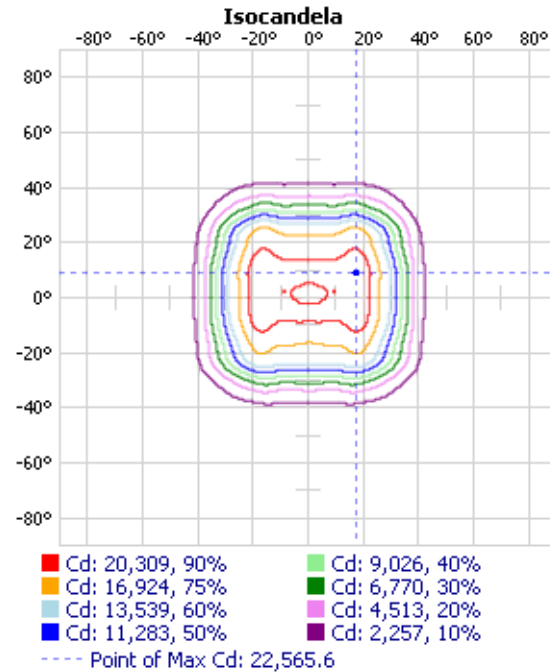
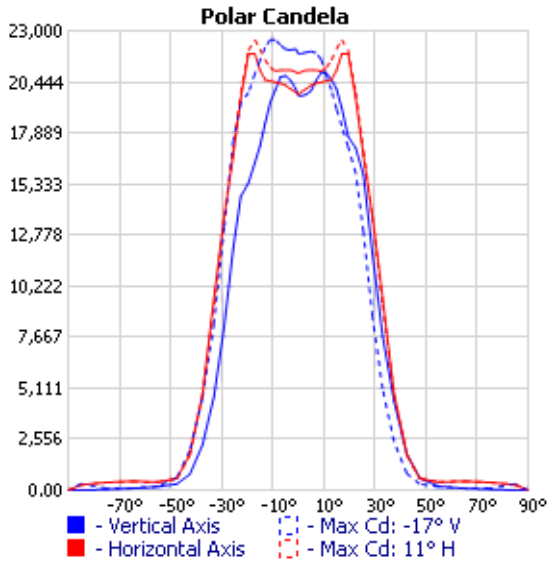
Horizontal Footcandles
Scale: 1 Inch = 25 Ft.
Light Loss Factor = 1.00
Lumens Per Lamp = N.A. (absolute photometry)
Luminaire Lumens = 12422
Mounting Height = 14.00 Ft, Tilt = 45 Degrees
Maximum Calculated Value = 20.77 Fc
Arrangement: Single

FLOOD PHOTOMETRIC REPORT

CATALOG: PSLED P5 XXXXX 55 50K

Test #: ISF 20444HP15
 Test Lab: SCALED PHOTOMETRY
 Catalog: PSLED P5 XXXXX 55 50K
 Description: Predator Small LED Floodlight with P5 Performance Package, Flood (5x5) (formally FL), 5000K CCT
 Series: PSLED Floodlight
 Lamp Output: Total luminaire Lumens: 23175.1, **absolute photometry ***
 Input Wattage: 154
 Luminous Opening: Rectangle (L: 6", W: 12")
 Nema Type: 5 X 5
 Max Cd: 22,565.6 at Horizontal: -17°, Vertical: 11°






*Test based on absolute photometry where lamp lumens=lumens total.

*Cutoff Classification and efficiency cannot be properly calculated for absolute photometry.

Visual Photometric Tool 1.2.46 copyright 2022, Acuity Brands Lighting.

This Photometric report has been generated using methods recommended by the IESNA. Calculations are based on Photometric data provided by the manufacturer, and the accuracy of this Photometric report is dependent on the accuracy of the data provided. End-user environment and application (including, but not limited to, voltage variation and dirt accumulation) can cause actual Photometric performance to differ from the performance calculated using the data provided by the manufacturer. This report is provided without warranty as to accuracy, completeness, reliability or otherwise. In no event will Acuity Brands Lighting be responsible for any loss resulting from any use of this report.

 ISF 20444HP15
 VISUAL PHOTOMETRIC TOOL

PAGE 1 OF 3

FLOOD PHOTOMETRIC REPORT
 CATALOG: PSLED P5 XXXXX 55 50K

Zonal Lumen Summary

Zone	Lumens	% Luminaire
0-30	15,372.2	66.3%
0-40	20,546.0	88.7%
0-60	22,398.5	96.6%
60-90	776.6	3.4%
0-90	23,175.1	100%

Lumens Per Zone

Zone	Lumens	% Total
0-10	1,949.8	8.4%
10-20	5,698.6	24.6%
20-30	7,723.8	33.3%
30-40	5,173.9	22.3%
40-50	1,522.3	6.6%
50-60	330.1	1.4%
60-70	255.4	1.1%
70-80	282.0	1.2%
80-90	239.2	1.0%

Flood Summary

	Efficiency	Lumens	Horizontal Spread	Vertical Spread
Field (10%):	92.7%	21,486.9	83.3	80
Beam (50%):	72.7%	16,853.1	62.4	57.4
Total:	100%	23,164.7		

Illuminance at a Distance

Height(M)	Center Beam	Beam Spread(M)		Field Spread(M)	
	Footcandle	Horizontal	Vertical	Horizontal	Vertical
1.00	19,803.31 LUX	1.2	1.1	1.8	1.7
2.00	4,950.83 LUX	2.4	2.2	3.6	3.4
3.00	2,200.37 LUX	3.6	3.3	5.3	5.0
4.00	1,237.71 LUX	4.8	4.4	7.1	6.7
5.00	792.13 LUX	6.1	5.5	8.9	8.4
6.00	550.09 LUX	7.3	6.6	10.7	10.1
		Beam Angle		Field Angle	
		62.4°	57.4°	83.3°	80.0°

FLOOD PHOTOMETRIC REPORT
 CATALOG: PSLED P5 XXXXX 55 50K

Candela Table - Type B

	-90	0	90
90	0	0	0
85	0	11	0
75	0	49	0
65	0	98	0
55	0	199	0
47.5	0	615	0
42.5	0	1815	0
37.5	0	4456	0
33	0	7722	0
29	0	11839	0
25.5	0	15809	0
22.5	0	17136	0
19.5	0	17714	0
17	0	19141	0
15	0	20087	0
13	0	20576	0
11	0	20886	0
9	0	20919	0
7	0	20535	0
5	0	20008	0
3	0	19824	0
1	0	19748	0
0	0	19803	0
-1	0	20093	0
-3	0	20530	0
-5	0	20757	0
-7	0	20702	0
-9	0	20045	0
-11	0	19433	0
-13	0	18369	0
-15	0	17244	0
-17	0	16403	0
-19.5	0	15393	0
-22.5	0	14714	0
-25.5	0	12099	0
-29	0	8212	0
-33	0	4695	0
-37.5	0	2283	0
-42.5	0	797	0
-47.5	0	325	0
-55	0	175	0
-65	0	98	0
-75	0	44	0
-85	0	4	0
-90	0	0	0

FL Series LED Flood Luminaire



Jarvis FL Series

Glass lens will never yellow

UV-resistant powdercoat finish avoids fading and flaking

Die-cast housing is constructed to prevent dirt from building up

120-277V input voltage

Built in surge protection

Competitors' Products

Plastic lens will yellow over time, especially if luminaire is positioned in direct sunlight

Powdercoat may fade or flake

Complicated heat sink designs trap dirt and debris

Single input voltage

Surge protection not included



Most Popular Models and Specifications:

Model	Description	Input	Power	Lumens	CCT	CRI	PF
FL-S-100-50K-UV-BRZ-KM	Knuckle Mount	120-277V 50/60Hz	30W	4,110	5000K	≥ 70	≥ 0.9
FL-S-100-50K-UV-BRZ-KM-PC	Knuckle Mount w/Integral Photo Cell	120-277V 50/60Hz	30W	4,110	5000K	≥ 70	≥ 0.9
FL-S-150-50K-UV-BRZ-KM	Knuckle Mount	120-277V 50/60Hz	45W	5,850	5000K	≥ 70	≥ 0.9
FL-S-150-50K-UV-BRZ-KM-PC	Knuckle Mount w/Integral Photo Cell	120-277V 50/60Hz	45W	5,850	5000K	≥ 70	≥ 0.9
FL-S-200-50K-UV-BRZ-KM	Knuckle Mount	120-277V 50/60Hz	60W	7,380	5000K	≥ 70	≥ 0.9
FL-S-200-50K-UV-BRZ-KM-PC	Knuckle Mount w/Integral Photo Cell	120-277V 50/60Hz	60W	7,380	5000K	≥ 70	≥ 0.9
FL-L-300-50K-UV-BRZ-SFM	Slipfitter Mount	120-277V 50/60Hz	90W	12,060	5000K	≥ 70	≥ 0.9
FL-L-300-50K-UV-BRZ-SFM-PC	Slipfitter Mount w/Integral Photo Cell	120-277V 50/60Hz	90W	12,060	5000K	≥ 70	≥ 0.9
FL-L-350-50K-UV-BRZ-SFM	Slipfitter Mount	120-277V 50/60Hz	120W	15,240	5000K	≥ 70	≥ 0.9
FL-L-350-50K-UV-BRZ-SFM-PC	Slipfitter Mount w/Integral Photo Cell	120-277V 50/60Hz	120W	15,240	5000K	≥ 70	≥ 0.9



www.jarvislighting.com



(800) 363-1075



Electrical

Input Voltage: 120-277V 50/60Hz

Power Factor: >.9 at full load

Total Harmonic Distortion: <20% full load

Includes over voltage protection, over current protection, and short circuit protection

Operating Temperature Range: -35°C to 40° C Ambient (-35°F to 104°F)

Over Temperature Protection: Light fixture automatically reduces power level when operating in higher temperatures to ensure componentry does not overheat. Full power levels are resumed automatically when temperatures return to rated operating range.

Controls and Dimming

0-10V dimming leads are default on all 120-277V input models and accessible inside fixture body.

Twist Lock Photo Controller

FL Series can be ordered with an integrated twist lock photo controller. The twist lock photo controller is IP65 rated and will turn the fixture on or off based on ambient light levels.

The FL Series is also compatible with many other photosensors and motion sensor systems. Contact a Jarvis representative for more information.

Twist Lock
Photo
Controller



Construction and Materials

Housing is constructed from die-cast aluminum. The FL-S models feature a knuckle mount, while the FL-L models feature an adjustable slipfitter mount.

Die-cast housing features a powdercoat finish with UV protection to ensure longevity of color. Powdercoat finish is applied directly to aluminum housing and will not crack or peel. Default color is bronze. Custom colors are available. Contact factory for additional color information

LEDs are reflow soldered to a metal core circuit board, providing greater thermal transfer than standard circuit board materials. Thermally-conductive material is positioned between LEDs and housing to provide increased thermal transfer

Lens construction is ultra-clear tempered glass

Luminaire's construction contains zero mercury

Fasteners are stainless-steel and will not rust or create rust-streaks

FL-L Series





Regulatory and Voluntary Qualifications

ETL listed to UL1598 and UL8750 for both US and Canada

State of California Title 24 Compliant when installed in accordance with local requirements

DesignLights Consortium® (DLC) qualified product. Not all versions of this product may be DLC qualified. Please check the DLC Qualified Products List at www.designlights.org/QPL to confirm which versions are qualified.

Rated for Wet and Dry Locations

Warranty and Lifetime

FL Series carries a 10-year warranty, photo sensor warranty may differ from fixture. Contact Jarvis representative for details.

Projected LED lifetime is 50,000 - 100,000 hours under most operating conditions. Lifetime projections are calculated using data including LM-79, LM-80 and TM-21 calculations. Contact Jarvis representative for details.

Installation

FL-L models can be installed onto round pole-top, tenon or pipe-stub up to 2.4" in diameter, with the slipfitter mount. Luminaire ships with at least 6" of wire protruding from slipfitter to allow for ease of wiring. Slipfitter features 180° adjustability.

FL-S models can be installed into any 1/2" NPS thread with the adjustable knuckle mount. Luminaire ships with at least 3" of wire protruding from the mounting arm to allow for ease of wiring. Knuckle mount features 180° adjustability.

Contact a Jarvis Representative for full installation instructions, videos or additional information.

Accessories

Jarvis Lighting manufactures a full line of mounting tenons compatible with the FL-L models. Available accessories include single, double, triple and quadruple tenons in multiple configurations. Short and long tenons are available. Wall mount brackets are available. Contact a Jarvis representative for information regarding our full selection of tenons.

FL-S Series



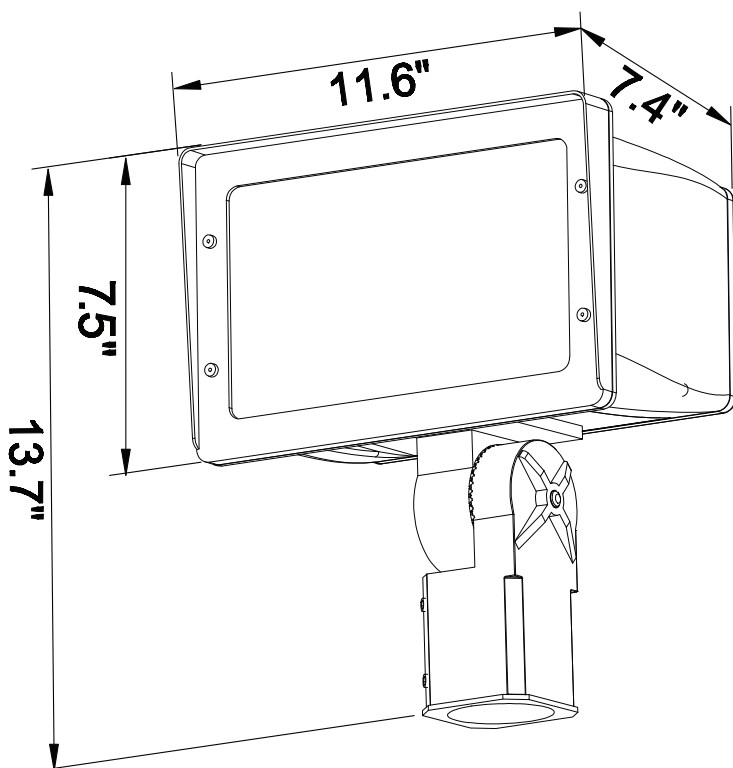
Light Poles

Jarvis Lighting manufactures light poles that are compatible with the FL-L Series. Standard poles include 4" and 5" steel poles. Custom poles and aluminum poles are also available. Contact Jarvis representative for information regarding light poles.

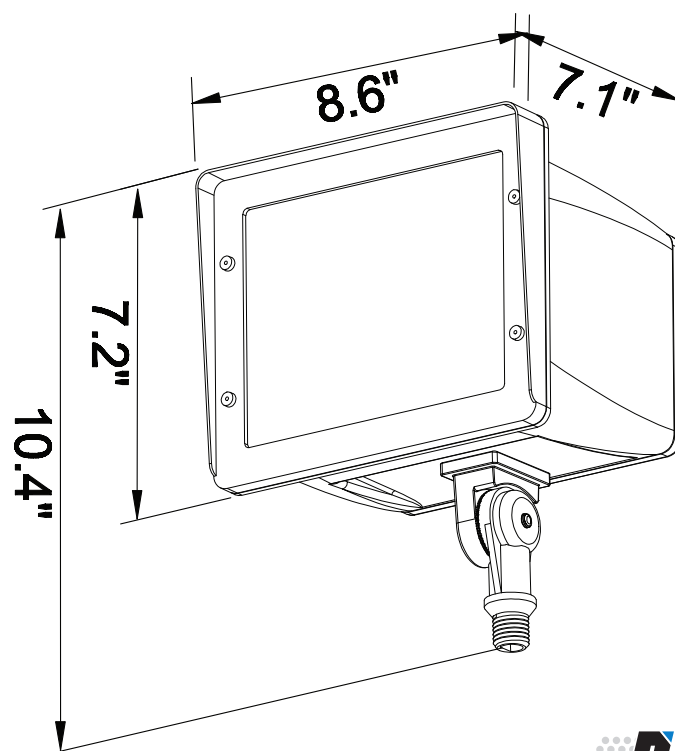


Photometrics

Photometric information, including LM-79 reports and .IES files are available for most models at www.jarvislighting.com. Site photometrics and lighting layouts are available. Contact a Jarvis representative.



*FL-L Series
Dimensions*



*FL-S Series
Dimensions*



BRIGHT DONE RIGHT™



www.jarvislighting.com



(800) 363-1075

Catalog Number	
Notes	Type

PSLED

Predator Small LED



The Predator LED is a robust, sustainable solution for any flood lighting application. The PSLED offers lumen packages for direct replacement of 100-1,000 watt HID floods. With energy savings exceeding 60% and expected service life over 20 years, Predator LED luminaires excel at meeting the challenges associated with flood lighting. The PSLED combines robust mechanical design features with the optical expertise, visual comfort and permanence of prismatic glass.

Mechanical

- Rugged grade A360 diecast aluminum (<1% copper)
- Tool-less access with stainless steel latches available
- Rigorous 5-stage pretreatment polyester topcoat to ensure maximum durability that achieves a scribe creepage rating of 8 after 5,000 hours of salt spray
- Adjustable knuckle-mount option, designed to fit 2.375 inch to 2.875 inch tenon with wireway access door
- Adjustable yoke mount option available in galvanized or stainless steel finish
- Tether securely holds cover in place during installation
- All Mountings are 3G vibration rated per ANSI C136.31
- IP66 per IEC60068-2-3

Electrical

- Standard surge protection is 20kV/10kA "Extreme Level" per ANSI C136.2
- Optional surge protection is 10kV/5kA per ANSI C136.2
- LED light engines are rated > 100,000 at 25°C, L70
- Electronic driver has an expected life of > 100,000 hours at 25°C
- Rated for -40°C / (-40°F) minimum ambient
- Programmable electronic driver with 0-10V control leads
- Driver voltage options: 120-277V 50/60 Hz and 347 50/60 Hz and 480V 50/60 Hz
- Single and double fusing options available
- 0-10V continuous dimming functionality is standard. Step dimming is available with the DALI driver option. Dimming control can be accomplished via AO, RSBOR options integrally or via photocontrol installed on P7 receptacle option.

Optical

- Performance is comparable to 100-400 watt HPS or 175-1,000 watt MH
- Borosilicate prismatic glass ensures longevity and minimizes dirt depreciation and improves visual comfort

- NEMA optical patterns:
 - 4x4, Narrow Spot Flood
 - 4x5, Medium Flood
 - 5x5, Flood
 - 6x6, Wide Flood
 - 6x5, Wide Flood Rectangle
- 2700K, 3000K, 4000K and 5000K CCT, 70 CRI
- Full Visor option available
- Upper/Bottom Visor option available
- Vandal Guard option available
- Wire guard kit option available

Controls

- 7 pin rotatable NEMA photocontrol receptacle
- 3 pin rotatable NEMA photocontrol receptacle
- Premium solid-state locking-style photocontrol – 10 year rated life
- Extreme long life solid state locking-style photocontrol – 20 year rated life
- Field adjustable output
- nLight Air motion and daylight sensor
- DALI driver option (consult with factory)

Certification & Standards

- CSA Certified to US and Canadian standards for wet location
- Marine environment listed with stainless steel yoke selection and without photo control receptacle.
- Suitable for operation in an ambient temperature up to 40°C/ 104°F for standard product
- Designlights Consortium® (DLC) qualified product. Not all versions of this product may be DLC qualified. Please check the DLC Qualified Products List at www.designlights.org/QPL to confirm which versions are qualified.

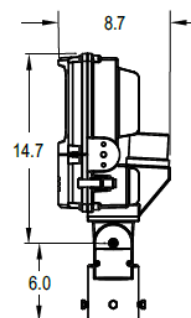
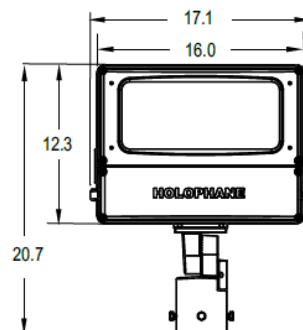
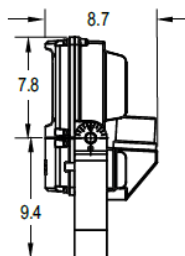
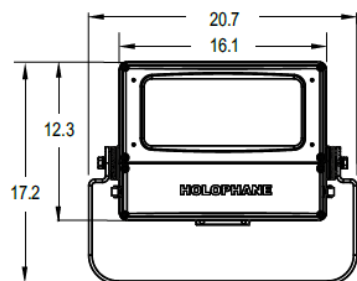
Warranty

5-year limited warranty. Complete warranty terms located at: www.acuitybrands.com/support/warranty/terms-and-conditions

Note: Actual performance may differ as a result of end-user environment and application. All values are design or typical values, measured under laboratory conditions at 25 °C.



DIMENSIONAL DATA



Yoke Mount Luminaire EPA of 1.76ft² and max weight 30 lbs

Tenon Mount Luminaire EPA of 1.89ft² and max weight 28 lbs

ORDERING INFORMATION

Series	LED Performance Package	Color Temperature	Voltage	Optics	Mounting Methods
PSLED Predator Small LED	P1 5,500 Lumens	27K 2700K CCT	MVOLT Multiple voltage (120V - 277V)	44 Narrow Spot Flood (4x4)	KM Tenon Slipfitter - knuckle (cord/leads exit bottom slipfitter)
	P2 7,300 Lumens	30K 3000K CCT		45 Medium Flood (4x5)	
	P3 12,300 Lumens	40K 4000K CCT	347 347V	55 Flood (5x5)	KS Tenon Slipfitter - knuckle (cord exit side of slipfitter)
	P4 17,600 Lumens	50K 5000K CCT	480 480V	66 Wide Flood (6x6)	
	P5 21,700 Lumens		XVOLT 277V-480V	65 Wide Flood Rectangle (6x5)	YMS Yoke Stainless Steel
	P6 27,200 Lumens				YMG Yoke Galvanized Steel
	P7 32,300 Lumens				

Color	Surge Protection	Miscellaneous	Cord Length	Cord Type
BKSDP Black Paint	20KV STANDARD OPTION: 20kV/10kA w/Indictor Light Extreme Surge (fail off)	TL Tool-less entry with latches	04 4 ft cord length	23 12 gage, 3 conductor
BZSDP Bronze Paint		XL No terminal block cover and not certified	05 5 ft cord length	43 14 gage, 3 conductor
GHSDP Graphite Paint	10KVMP 10kV/5kA MOV pack (fail on)	NL Nema Label	06 6 ft cord length	63 16 gage, 3 conductor
GYSDP Gray Paint		WL Wet Location listed	08 8 ft cord length	
WHS DP White Paint		MRE ² Marine Listed	10 10 ft cord length	

Options / Controls	Accessories (Shipped Separately)
PR3 3 pin rotatable NEMA receptacle	PSLEDFV-BKSDP Full Visor - Black Paint
PR7 7 pin rotatable NEMA receptacle	PSLEDFV-BZSDP Full Visor - Bronze Paint
NPR No PER receptacle	PSLEDFV-GHSDP Full Visor - Graphite Paint
PCLL Solid State Long Life Photocontrol	PSLEDFV-GYSDP Full Visor - Gray Paint
PCSS Solid State Photocontrol	PSLEDFV-WHSDP Full Visor - White Paint
HRSBOR nLight Air Occ. and daylight sensor (15-30 ft) ¹	PSLEDUBV-BKSDP Upper/Bottom Visor - Black Paint
LRSBOR nLight Air Occ. and daylight sensor (8-15 ft) ¹	PSLEDUBV-BZSDP Upper/Bottom Visor - Bronze Paint
SH Shorting Cap	PSLEDUBV-GHSDP Upper/Bottom Visor - Graphite Paint
F1 Single Fusing	PSLEDUBV-GYSDP Upper/Bottom Visor - Gray Paint
F2 Double Fusing	PSLEDUBV-WHSDP Upper/Bottom Visor - White Paint
AO Field Adjustable Output	PSLEDVG Vandal Guard
DALI DALI Driver - Consult Factory	PSLEDWG Wire Guard

Note:

- 1 Only available with KM mounting method.
- 2 Requires stainless yoke mount (YMS) and cannot be configured with photo control receptacle PR3 or PR7.

MOUNTING OPTIONS



Yoke



Tenon Slipfitter

VISORS & GUARD ACCESSORIES



Upper/Bottom Visor



Full Visor



Wire Guard



Vandal Guard

OPTIONS MATRIX

PSLED	LED Packages							Voltage				Controls										Options			
	P1	P2	P3	P4	P5	P6	P7	MVOLT	347	480	XVOLT	PR7	PR3	NR	PCLL	PCSS	HRSBOR	LRSBOR	SH	AO	DALI	F1	F2	TL	NL
LED Packages	P1							Y	Y	Y	Y	Y	Y	Y	Y	Y	Y	Y	Y	Y	Y	Y	Y	Y	Y
	P2							Y	Y	Y	Y	Y	Y	Y	Y	Y	Y	Y	Y	Y	Y	Y	Y	Y	Y
	P3							Y	Y	Y	Y	Y	Y	Y	Y	Y	Y	Y	Y	Y	Y	Y	Y	Y	Y
	P4							Y	Y	Y	Y	Y	Y	Y	Y	Y	Y	Y	Y	Y	Y	Y	Y	Y	Y
	P5							Y	Y	Y	Y	Y	Y	Y	Y	Y	Y	Y	Y	Y	Y	Y	Y	Y	Y
	P6							Y	N	N	N	Y	Y	Y	Y	Y	Y	Y	Y	Y	N	Y	Y	Y	Y
	P7							Y	N	N	N	Y	Y	Y	Y	Y	Y	Y	Y	Y	N	Y	Y	Y	Y
Voltage	MVOLT	Y	Y	Y	Y	Y	Y					Y	Y	Y	Y	Y	Y	Y	Y	Y	Y	Y	Y	Y	Y
	347	Y	Y	Y	Y	Y	N	N				Y	Y	Y	Y	N	Y	Y	Y	Y	Y	Y	Y	Y	Y
	480	Y	Y	Y	Y	Y	N	N				Y	Y	Y	Y	N	Y	Y	Y	Y	Y	Y	Y	Y	Y
	XVOLT	Y	Y	Y	Y	Y	N	N				Y	Y	Y	Y	N	Y	Y	Y	Y	Y	Y	Y	Y	Y
Controls	PR7	Y	Y	Y	Y	Y	Y	Y	Y	Y	Y		N	Y	Y	Y	N	N	Y	Y	Y	Y	Y	Y	Y
	PR3	Y	Y	Y	Y	Y	Y	Y	Y	Y	Y	N		Y	Y	Y	N	N	Y	Y	Y	Y	Y	Y	Y
	NR	Y	Y	Y	Y	Y	Y	Y	Y	Y	Y	Y	Y		Y	Y	Y	Y	N	Y	Y	Y	Y	Y	Y
	PCLL	Y	Y	Y	Y	Y	Y	Y	Y	Y	N	Y	Y	Y		N	N	N	N	Y	Y	Y	Y	Y	Y
	PCSS	Y	Y	Y	Y	Y	Y	Y	N	N	N	Y	Y	Y	N		N	N	N	Y	Y	Y	Y	Y	Y
	HRSBOR	Y	Y	Y	Y	Y	Y	Y	Y	Y	Y	N	N	Y	N	N		N	N	N	N	Y	Y	Y	Y
	LRSBOR	Y	Y	Y	Y	Y	Y	Y	Y	Y	Y	N	N	Y	N	N	N		N	N	N	Y	Y	Y	Y
	SH	Y	Y	Y	Y	Y	Y	Y	Y	Y	Y	Y	Y	N	N	N	N	N		Y	Y	Y	Y	Y	Y
	AO	Y	Y	Y	Y	Y	Y	Y	Y	Y	Y	Y	Y	Y	Y	Y	N	N	Y		N	Y	Y	Y	Y
	DALI	Y	Y	Y	Y	Y	N	N	Y	Y	Y	Y	Y	Y	Y	Y	N	N	Y	N		Y	Y	Y	Y
Options	F1	Y	Y	Y	Y	Y	Y	Y	Y	Y	Y	Y	Y	Y	Y	Y	Y	Y	Y	Y		N	Y	Y	Y
	F2	Y	Y	Y	Y	Y	Y	Y	Y	Y	Y	Y	Y	Y	Y	Y	Y	Y	Y	Y	N		Y	Y	Y
	TL	Y	Y	Y	Y	Y	Y	Y	Y	Y	Y	Y	Y	Y	Y	Y	Y	Y	Y	Y	Y	Y		Y	Y
	NL	Y	Y	Y	Y	Y	Y	Y	Y	Y	Y	Y	Y	Y	Y	Y	Y	Y	Y	Y	Y	Y	Y		Y

MATRIX KEY

N = Combination Not available

Y = Valid Option Combination

LUMINAIRE AMBIENT TEMPERATURE FACTOR

0°C	15°C	25°C	35°C	40°C
1.03	1.01	1.00	0.99	0.98

ELECTRICAL LOAD

Performance Package	Watts	Current (A)					
		120V	208V	240V	277V	347V	480V
P1	37	0.307	0.176	0.154	0.135	0.104	0.079
P2	52	0.417	0.238	0.207	0.18	0.143	0.105
P3	83	0.694	0.405	0.358	0.315	0.245	0.18
P4	123	0.995	0.574	0.501	0.442	0.349	0.254
P5	154	1.266	0.727	0.633	0.551	0.443	0.32
P6	201	1.69	0.96	0.84	0.74		
P7	254	2.31	1.33	1.15	0.999		

PERFORMANCE DATA

Performance Package	Distribution	Input Watts	30K (3000K CCT, 70 CRI)		40K (4000K CCT, 70 CRI)		50K (5000K CCT, 70 CRI)		LLD @ 25°C		
			Lumens	LPW	Lumens	LPW	Lumens	LPW	50k Hours	75k Hours	100k Hours
P1	44	37	4,104	111	4,185	113	4,261	115	0.92	0.89	0.85
	45		5,481	148	5,589	151	5,690	154			
	55		5,622	152	5,733	155	5,837	158			
	65		5,319	144	5,424	147	5,522	149			
	66		5,553	150	5,662	153	5,764	156			
P2	44	50	5,472	109	5,579	112	5,680	114	0.92	0.89	0.85
	45		7,307	146	7,451	149	7,585	152			
	55		7,495	150	7,643	153	7,781	156			
	65		7,091	142	7,230	145	7,361	147			
	66		7,402	148	7,548	151	7,685	154			
P3	44	83	9,218	111	9,400	113	9,570	115	0.92	0.89	0.85
	45		12,310	148	12,552	151	12,779	154			
	55		12,627	152	12,876	155	13,109	158			
	65		11,945	144	12,181	147	12,401	149			
	66		12,471	150	12,716	153	12,946	156			
P4	44	123	13,219	107	13,480	110	13,724	112	0.92	0.89	0.85
	45		17,653	144	18,001	146	18,327	149			
	55		18,108	147	18,465	150	18,799	153			
	65		17,131	139	17,468	142	17,784	145			
	66		17,884	145	18,236	148	18,566	151			
P5	44	154	16,289	106	16,610	108	16,911	110	0.92	0.89	0.85
	45		21,753	141	22,181	144	22,583	147			
	55		22,314	145	22,753	149	23,165	150			
	65		21,109	137	21,525	146	21,914	142			
	66		22,037	143	22,471	138	22,878	149			
P6	44	200	20,366	102	20,768	104	21,143	106	0.92	0.89	0.85
	45		27,197	136	27,733	139	28,235	141			
	55		27,898	139	28,448	142	28,962	145			
	65		26,392	132	26,912	135	27,399	137			
	66		27,553	138	28,095	140	28,604	143			
P7	44	251	24,260	97	24,738	99	25,185	100	0.92	0.89	0.85
	45		32,397	129	33,035	132	33,632	134			
	55		33,232	132	33,886	135	34,499	137			
	65		31,438	125	32,057	128	32,637	130			
	66		32,820	131	33,467	133	34,072	136			