

LEGEND

5280	PROPOSED MAJOR CONTOUR
5279	PROPOSED MINOR CONTOUR
5280	EXISTING MAJOR CONTOUR
5279	EXISTING MINOR CONTOUR
---	LIMITS OF CONSTRUCTION
---	CUT/FILL BOUNDARY
RCD	REINFORCED CHECK DAM
CWA	CONCRETE WASHOUT AREA
DD	DIVERSION DITCH
IP	INLET PROTECTION
RS	ROCK SOCK
SB	SEDIMENT BASIN
SCL	SEDIMENT CONTROL LOG
SM	SEEDING
SF	SILT FENCE
SSA	STABILIZED STAGING AREA
ST	SEDIMENT TRAP
TSC	TEMPORARY STREAM CROSSING
VTC	VEHICLE TRACKING CONTROL
---	PERMANENT STREAM CROSSING
---	AGREGATE ACCESS ROAD
X	PERMANENT FENCE
---	EXISTING SECTION LINE
---	POND OVERFLOW ROUTE

- NOTES:
- SEE COVER SHEET FOR EL PASO COUNTY GEC STANDARD NOTES.
 - SEE SHEETS 74-75 FOR EROSION CONTROL DETAILS.
 - ALL SILT FENCE NOT RUNNING PARALLEL TO CONTOURS SHALL BE INSTALLED WITH J-HOOKS. SEE SHEET 75 FOR DETAIL.
 - EXISTING COVER AT THE SITE WAS ESTIMATED AT 40%. AS DETERMINED VIA AERIAL IMAGERY INSPECTION, AREAS BEING STABILIZED WITH A VEGETATIVE COVER WILL HAVE EVENLY DISTRIBUTED PERENNIAL VEGETATION. THE VEGETATION COVERAGE WILL BE EQUAL TO AT LEAST 70% OF THE EXISTING COVER THROUGHOUT THE SITE. THROUGH COMPARISON WITH UNDISTURBED REFERENCE SITES ESTABLISHED THROUGHOUT THE PROJECT AREA PRIOR TO CONSTRUCTION.



#	REVISION DESCRIPTION	DATE	BY
1	1ST SUBMITTAL	02/25/21	DB
2	BID SET	04/07/21	DB
3	2ND SUBMITTAL	10/20/21	KR
4	SIGNATURE SET	02/04/22	RH

PIKE SOLAR

EL PASO COUNTY, COLORADO

GRADING & EROSION CONTROL PLANS

INITIAL (7 OF 24)

NOT FOR CONSTRUCTION

DESIGNED BY: BB
DRAWN BY: SD
CHECKED BY: DB

JOB NO.
20-194

SHEET
9 OF 78

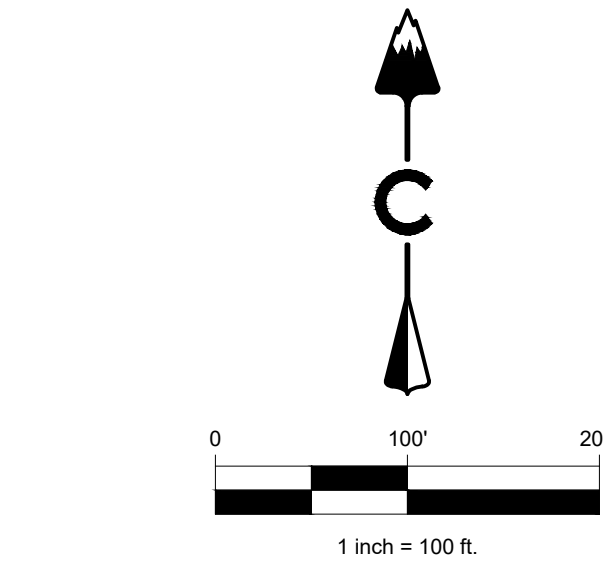
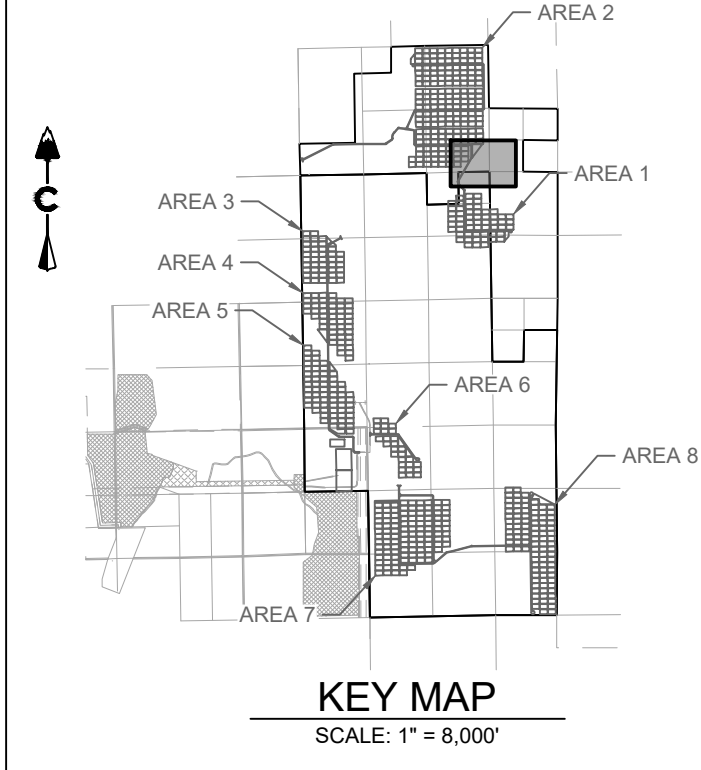
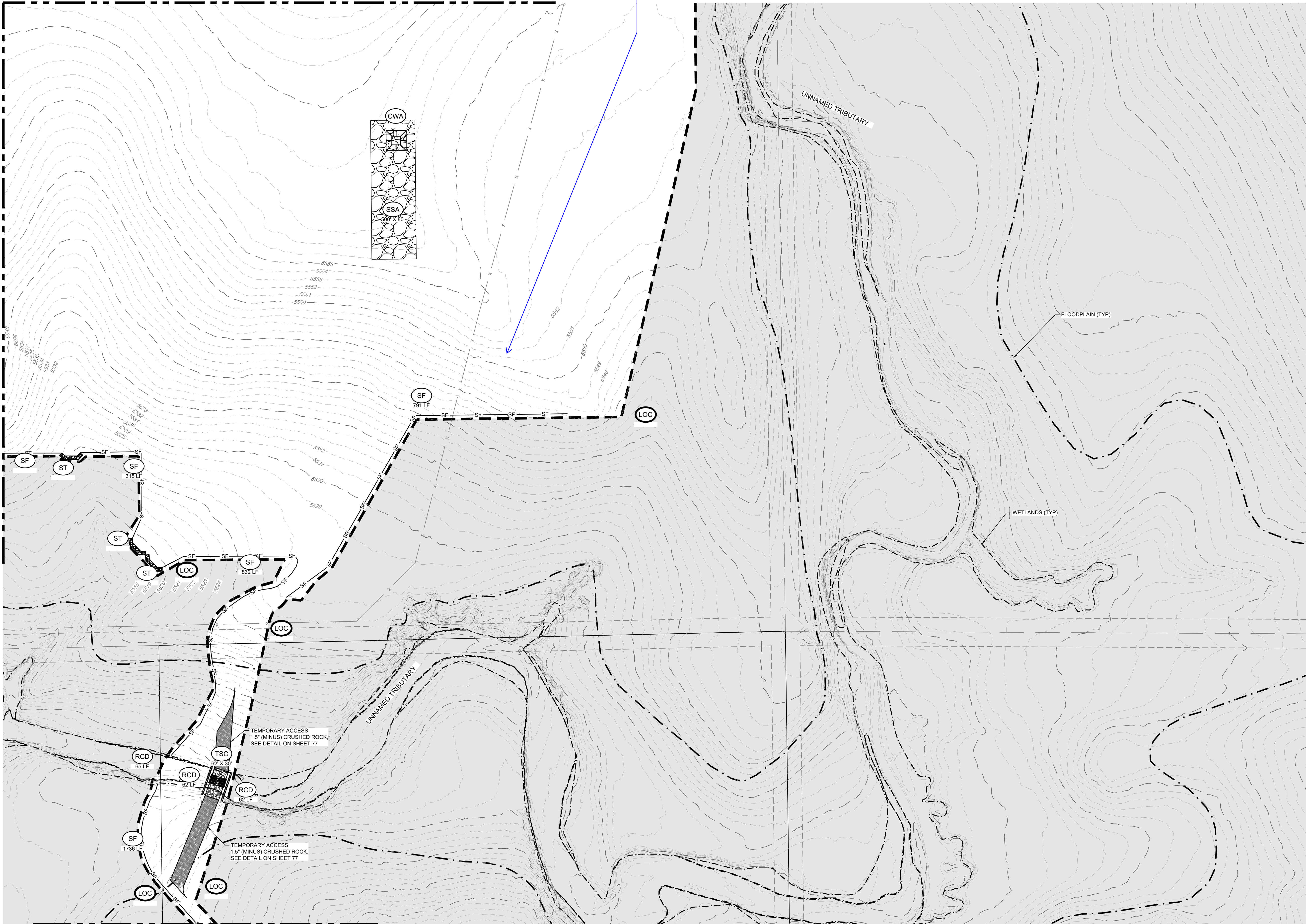
MATCH LINE SHEET 9

MATCH LINE SHEET 8

MATCH LINE SHEET 11

Flow arrows added

Replace flow arrows on sheets
where they're missing



LEGEND

	5280	PROPOSED MAJOR CONTOUR
	5279	PROPOSED MINOR CONTOUR
	5280	EXISTING MAJOR CONTOUR
	5279	EXISTING MINOR CONTOUR
		LIMITS OF CONSTRUCTION
		CUT/FILL BOUNDARY
	(RCD)	REINFORCED CHECK DAM
	(CWA)	CONCRETE WASHOUT AREA
	(DD)	DIVERSION DITCH
	(IP)	INLET PROTECTION
	(RS)	ROCK SOCK
	(SB)	SEDIMENT BASIN
	(SCL)	SEDIMENT CONTROL LOG
	(SM)	SEEDING
	(SF)	SILT FENCE
	(SSA)	STABILIZED STAGING AREA
	(ST)	SEDIMENT TRAP
	(TSC)	TEMPORARY STREAM CROSSING
	(VTC)	VEHICLE TRACKING CONTROL
	(PSC)	PERMANENT STREAM CROSSING
	(AAR)	AGREGATE ACCESS ROAD
	(PF)	PERMANENT FENCE
	(ESL)	EXISTING SECTION LINE
	(POR)	POND OVERFLOW ROUTE

NOTES:

- SEE COVER SHEET FOR EL PASO COUNTY GEC STANDARD NOTES.
- SEE SHEETS 74-75 FOR EROSION CONTROL DETAILS.
- ALL SILT FENCE NOT RUNNING PARALLEL TO CONTOURS SHALL BE INSTALLED WITH J-HOOKS, SEE SHEET 75 FOR DETAIL.
- EXISTING COVER AT THE SITE WAS ESTIMATED AT 40%, AS DETERMINED VIA AERIAL IMAGERY INSPECTION. AREAS BEING STABILIZED WITH A VEGETATIVE COVER WILL HAVE EVENLY DISTRIBUTED PERENNIAL VEGETATION. THE VEGETATION COVERAGE WILL BE EQUAL TO AT LEAST 70% OF THE EXISTING COVER THROUGHOUT THE SITE, THROUGH COMPARISON WITH UNDISTURBED REFERENCE SITES ESTABLISHED THROUGHOUT THE PROJECT AREA PRIOR TO CONSTRUCTION.

Know what's below.
Call before you dig.



#	REVISION DESCRIPTION	DATE	BY
1	1ST SUBMITTAL	02/25/21	DB
2	BID SET	04/07/21	DB
3	2ND SUBMITTAL	10/20/21	KR
4	SIGNATURE SET	02/04/22	RH

PIKE SOLAR

EL PASO COUNTY, COLORADO

GRADING & EROSION CONTROL PLANS

INITIAL (8 OF 24)

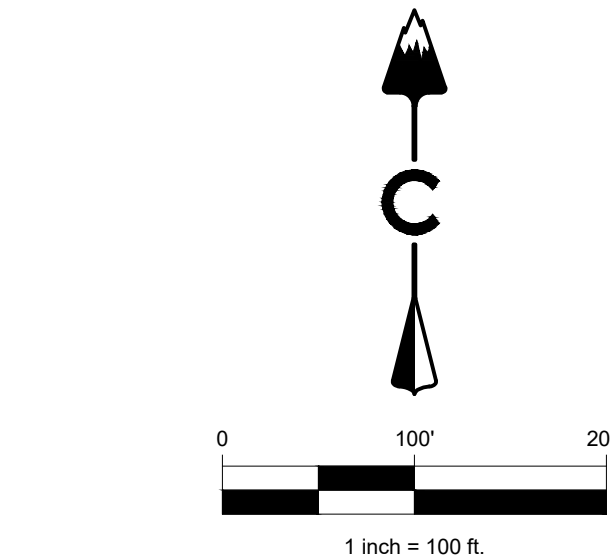
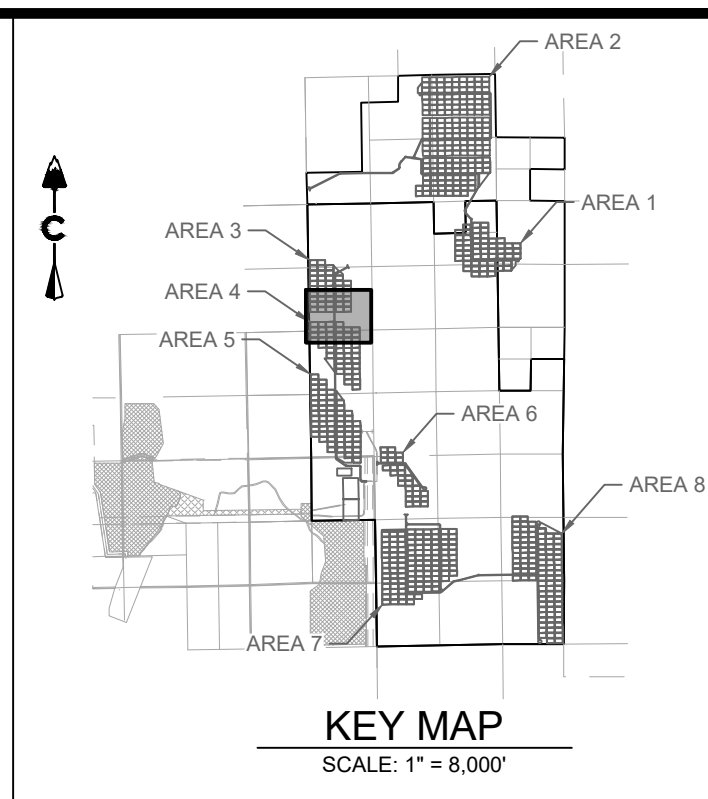
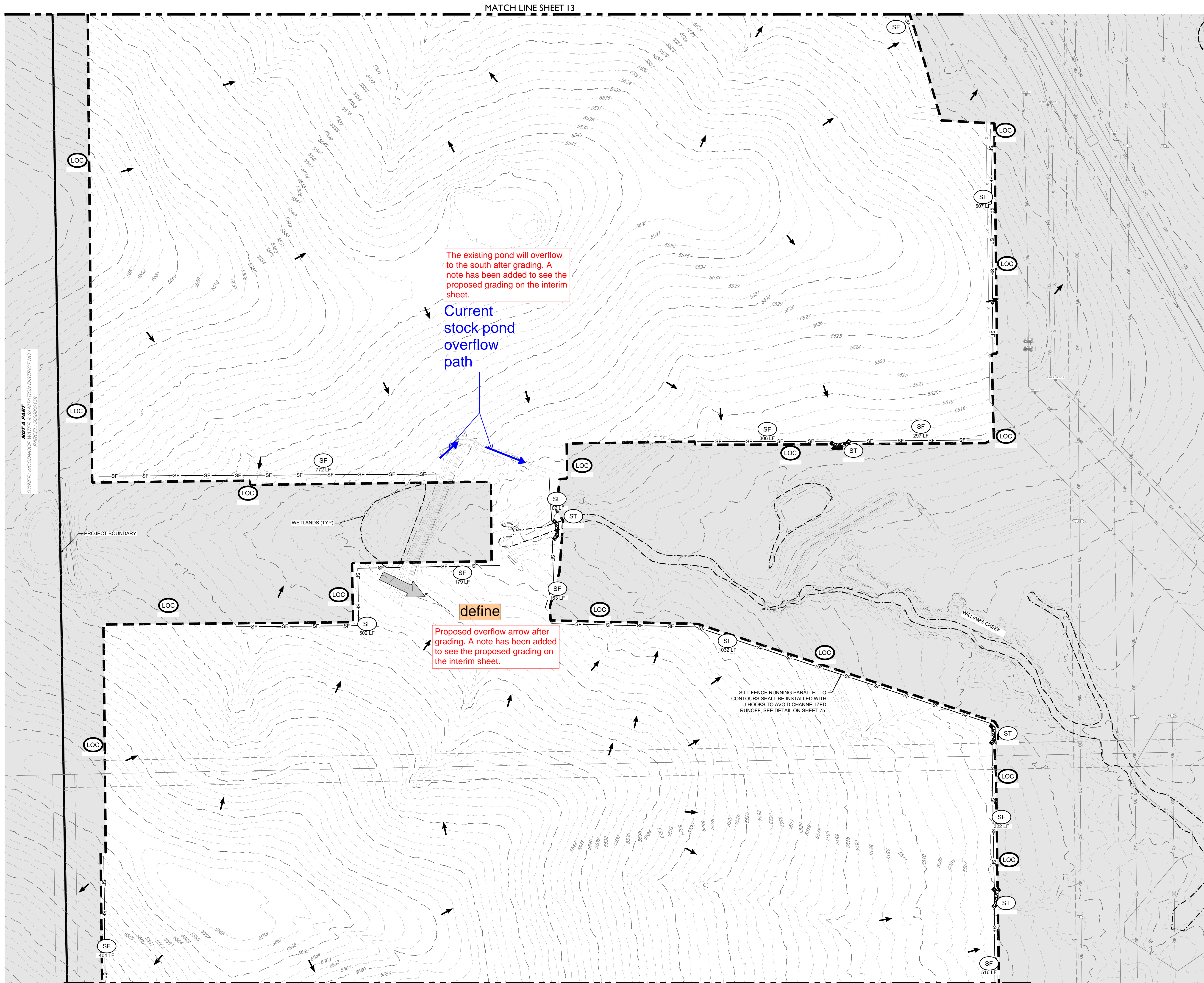
NOT FOR
CONSTRUCTION

DESIGNED BY: BB
DRAWN BY: SD
CHECKED BY: DB

JOB NO.
20-194

SHEET
10 OF 78

NOT A PART
OWNER: WOODMOOR WATER & SANITATION DISTRICT NO 1
PARCEL: 000000055



LEGEND			
	5280	PROPOSED MAJOR CONTOUR	
	5279	PROPOSED MINOR CONTOUR	
	5280	EXISTING MAJOR CONTOUR	
	5279	EXISTING MINOR CONTOUR	
		LIMITS OF CONSTRUCTION	
		CUT/FILL BOUNDARY	
	RCD	REINFORCED CHECK DAM	
	CWA	CONCRETE WASHOUT AREA	
	DD	DIVERSION DITCH	
	IP	INLET PROTECTION	
	RS	ROCK SOCK	
	SB	SEDIMENT BASIN	
	SCL	SEDIMENT CONTROL LOG	
	SM	SEEDING	
	SF	SILT FENCE	
	SSA	STABILIZED STAGING AREA	
	ST	SEDIMENT TRAP	
	TSC	TEMPORARY STREAM CROSSING	
	VTC	VEHICLE TRACKING CONTROL	
	PSC	PERMANENT STREAM CROSSING	
	AGR	AGREGATE ACCESS ROAD	
	X	PERMANENT FENCE	
		EXISTING SECTION LINE	
		POND OVERFLOW ROUTE	

- NOTES:
- SEE COVER SHEET FOR EL PASO COUNTY GEC STANDARD NOTES.
 - SEE SHEETS 74-75 FOR EROSION CONTROL DETAILS.
 - ALL SILT FENCE NOT RUNNING PARALLEL TO CONTOURS SHALL BE INSTALLED WITH J-HOOKS, SEE SHEET 75 FOR DETAIL.
 - EXISTING COVER AT THE SITE WAS ESTIMATED AT 40%. AS DETERMINED VIA AERIAL IMAGERY INSPECTION, AREAS BEING STABILIZED WITH A VEGETATIVE COVER WILL HAVE EVENLY DISTRIBUTED PERENNIAL VEGETATION. THE VEGETATION COVERAGE WILL BE EQUAL TO AT LEAST 70% OF THE EXISTING COVER THROUGHOUT THE SITE. THROUGH COMPARISON WITH UNDISTURBED REFERENCE SITES ESTABLISHED THROUGHOUT THE PROJECT AREA PRIOR TO CONSTRUCTION.

LAND DEVELOPMENT
ENERGY
PUBLIC INFRASTRUCTURE

CORE CONSULTANTS, INC.
3473 S. BROADWAY
DENVER, CO 80113
303.703.4444
LIVEYOURCORE.COM

Know what's below.
Call before you dig.

811

#	REVISION	DESCRIPTION	DATE	BY
1	1ST SUBMITTAL		02/25/21	DB
2	BID SET		04/07/21	DB
3	2ND SUBMITTAL		10/20/21	RR
4	SIGNATURE SET		02/04/22	RR

PIKE SOLAR
EL PASO COUNTY, COLORADO
GRADING & EROSION CONTROL PLANS
INITIAL (12 OF 24)

NOT FOR
CONSTRUCTION

DESIGNED BY: BB
DRAWN BY: SD
CHECKED BY: DB

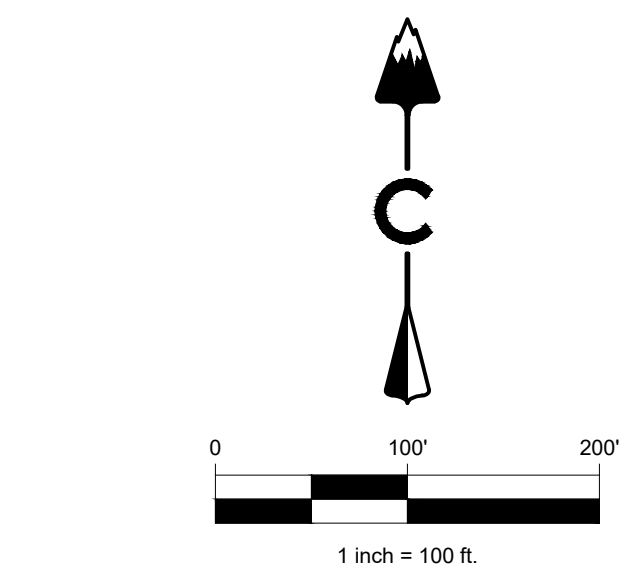
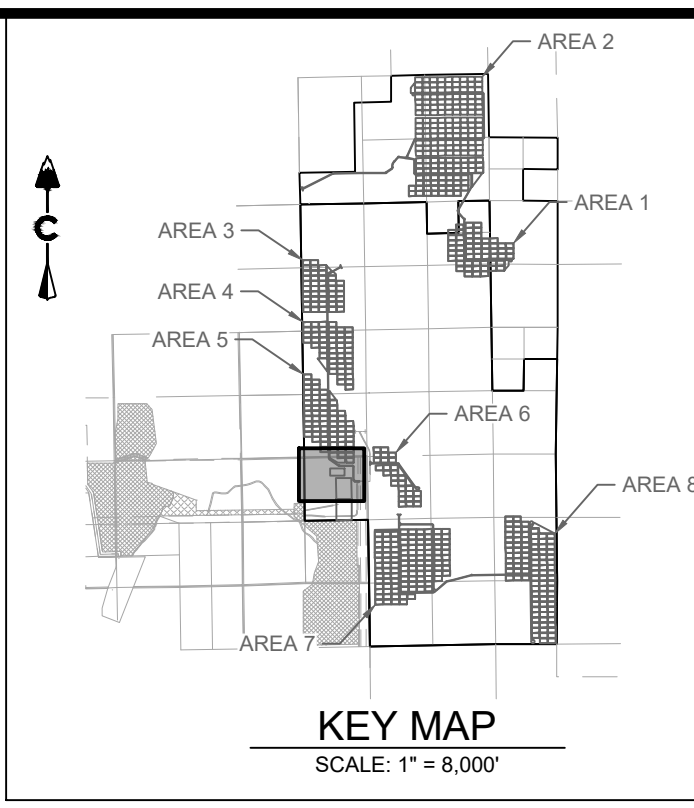
JOB NO.
20-194
SHEET
14 OF 78

PPR-22-008



NOT A PART
OWNER: WOODMOOR WATER & SANITATION DISTRICT NO. 1
PARCEL: 56000010137

SB DESIGN
DISTURBED AREA 10 ACRES
VOLUME 1,008 CY
CREST 15'
HOLE DIA. 36"
NUMBER OF HOLES 3
NUMBER OF COLUMNS 1
SEE SHEET 76 FOR DETAIL



LEGEND			
	5280	PROPOSED MAJOR CONTOUR	
	5279	PROPOSED MINOR CONTOUR	
	5280	EXISTING MAJOR CONTOUR	
	5279	EXISTING MINOR CONTOUR	
		LIMITS OF CONSTRUCTION	
		CUT/FILL BOUNDARY	
	RCD	REINFORCED CHECK DAM	
	CWA	CONCRETE WASHOUT AREA	
	DD	DIVERSION DITCH	
	IP	INLET PROTECTION	
	RS	ROCK SOCK	
	SB	SEDIMENT BASIN	
	SCL	SEDIMENT CONTROL LOG	
	SM	SEEDING	
	SF	SILT FENCE	
	SSA	STABILIZED STAGING AREA	
	ST	SEDIMENT TRAP	
	TSC	TEMPORARY STREAM CROSSING	
	VTC	VEHICLE TRACKING CONTROL	
		PERMANENT STREAM CROSSING	
		AGREGATE ACCESS ROAD	
	X	PERMANENT FENCE	
		EXISTING SECTION LINE	
		POND OVERFLOW ROUTE	

- NOTES:
- SEE COVER SHEET FOR EL PASO COUNTY GEC STANDARD NOTES.
 - SEE SHEETS 74-75 FOR EROSION CONTROL DETAILS.
 - ALL SILT FENCE NOT RUNNING PARALLEL TO CONTOURS SHALL BE INSTALLED WITH J-HOOKS, SEE SHEET 75 FOR DETAIL.
 - EXISTING COVER AT THE SITE WAS ESTIMATED AT 40%, AS DETERMINED VIA AERIAL IMAGERY INSPECTION. AREAS BEING STABILIZED WITH A VEGETATIVE COVER WILL HAVE EVENLY DISTRIBUTED PERENNIAL VEGETATION. THE VEGETATION COVERAGE WILL BE EQUAL TO AT LEAST 70% OF THE EXISTING COVER THROUGHOUT THE SITE, THROUGH COMPARISON WITH UNDISTURBED REFERENCE SITES ESTABLISHED THROUGHOUT THE PROJECT AREA PRIOR TO CONSTRUCTION.

LAND DEVELOPMENT
ENERGY
PUBLIC INFRASTRUCTURE

CORE CONSULTANTS, INC.
3473 S. BROADWAY
DENVER, CO 80113
303.703.4444
LIVEYOURCORE.COM

CORE

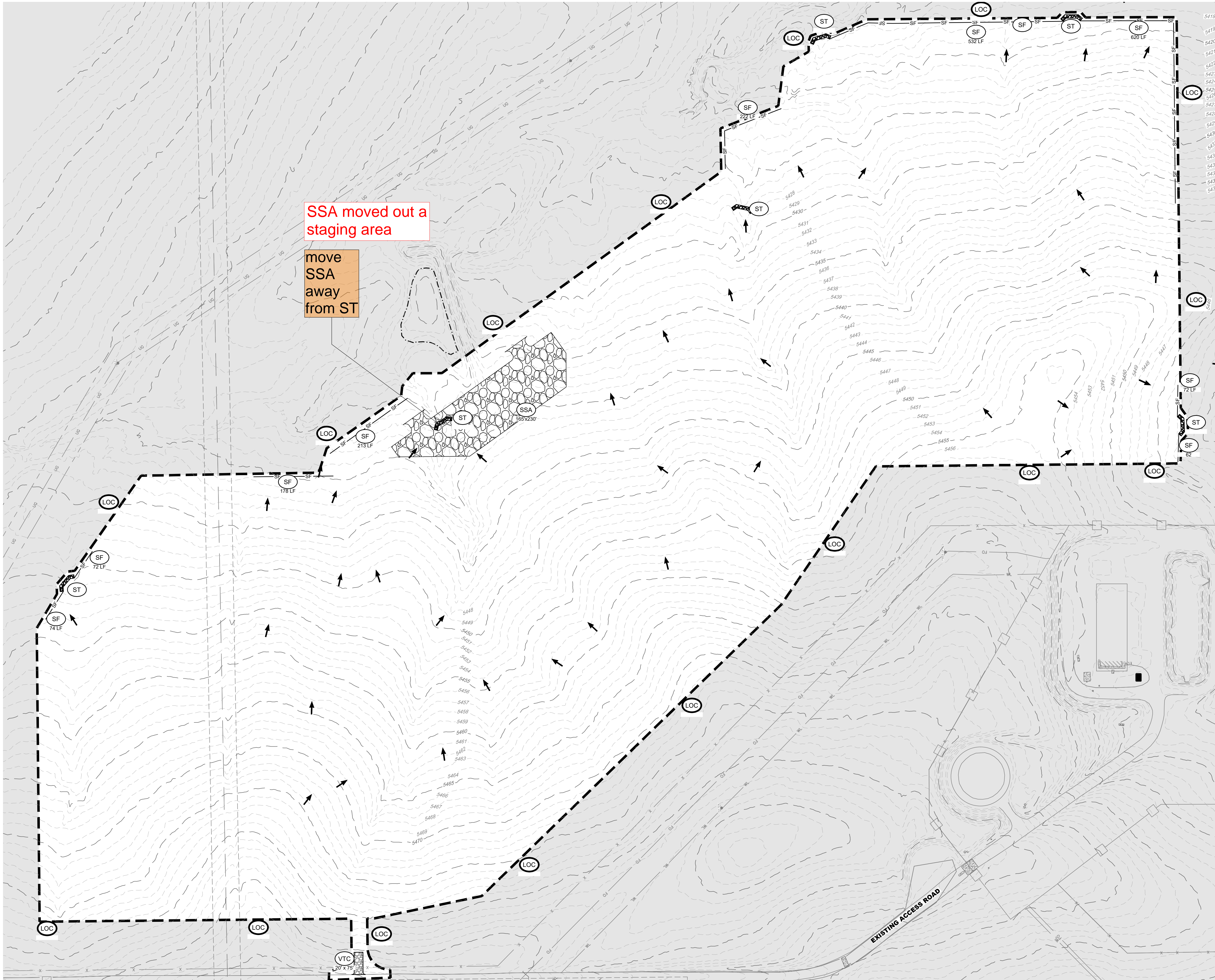
Know what's below.
Call before you dig.
811

#	REVISION DESCRIPTION	DATE	BY
1	1ST SUBMITTAL	02/25/21	DB
2	BID SET	04/07/21	DB
3	2ND SUBMITTAL	10/20/21	KR
4	SIGNATURE SET	02/04/22	RH

PIKE SOLAR
EL PASO COUNTY, COLORADO
GRADING & EROSION CONTROL PLANS
INITIAL (15 OF 24)

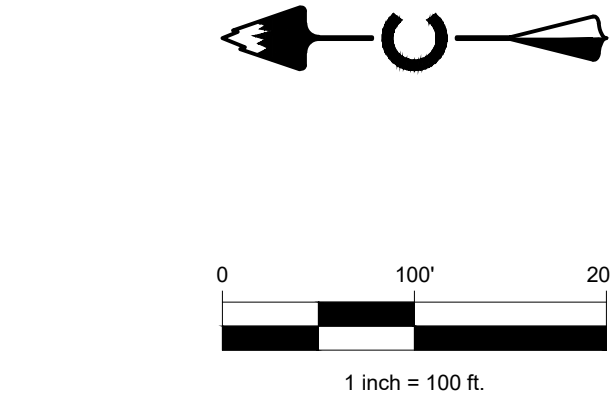
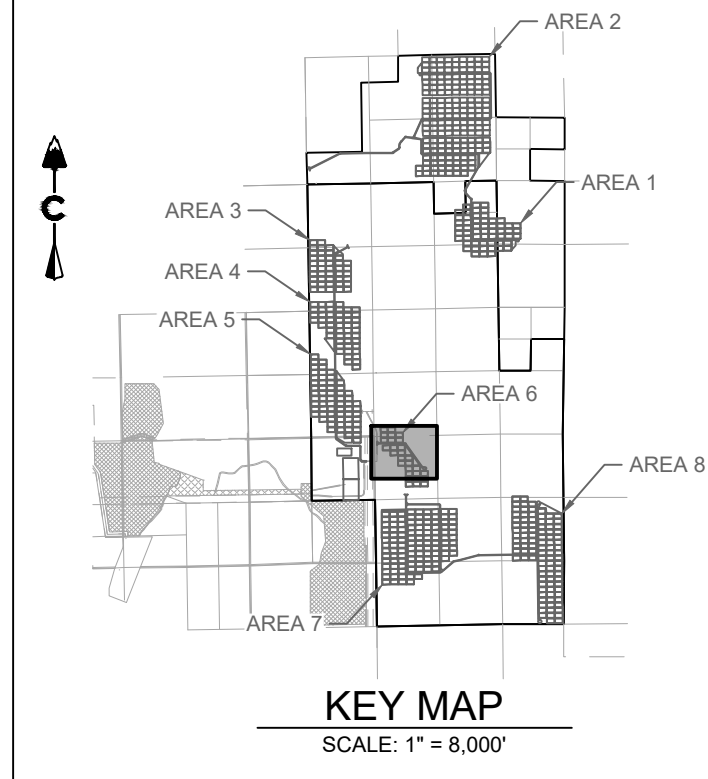
NOT FOR
CONSTRUCTION

DESIGNED BY:	BB
DRAWN BY:	SD
CHECKED BY:	DB
JOB NO.	20-194
SHEET	17 OF 78



SSA moved out a staging area

move SSA away from ST



LEGEND			
	5280	PROPOSED MAJOR CONTOUR	
	5279	PROPOSED MINOR CONTOUR	
	5280	EXISTING MAJOR CONTOUR	
	5279	EXISTING MINOR CONTOUR	
		LIMITS OF CONSTRUCTION	
		CUT/FILL BOUNDARY	
	RCD	REINFORCED CHECK DAM	
	CWA	CONCRETE WASHOUT AREA	
	DD	DIVERSION DITCH	
	IP	INLET PROTECTION	
	RS	ROCK SOCK	
	SB	SEDIMENT BASIN	
	SCL	SEDIMENT CONTROL LOG	
	SM	SEEDING	
	SF	SILT FENCE	
	SSA	STABILIZED STAGING AREA	
	ST	SEDIMENT TRAP	
	TSC	TEMPORARY STREAM CROSSING	
	VTC	VEHICLE TRACKING CONTROL	
		PERMANENT STREAM CROSSING	
		AGREGATE ACCESS ROAD	
	X	PERMANENT FENCE	
		EXISTING SECTION LINE	
		POND OVERFLOW ROUTE	

- NOTES:**
- SEE COVER SHEET FOR EL PASO COUNTY GEC STANDARD NOTES.
 - SEE SHEETS 74-75 FOR EROSION CONTROL DETAILS.
 - ALL SILT FENCE NOT RUNNING PARALLEL TO CONTOURS SHALL BE INSTALLED WITH J-HOOKS, SEE SHEET 75 FOR DETAIL.
 - EXISTING COVER AT THE SITE WAS ESTIMATED AT 40%. AS DETERMINED VIA AERIAL IMAGERY INSPECTION, AREAS BEING STABILIZED WITH A VEGETATIVE COVER WILL HAVE EVENLY DISTRIBUTED PERENNIAL VEGETATION. THE VEGETATION COVERAGE WILL BE EQUAL TO AT LEAST 70% OF THE EXISTING COVER THROUGHOUT THE SITE. THROUGH COMPARISON WITH UNDISTURBED REFERENCE SITES ESTABLISHED THROUGHOUT THE PROJECT AREA PRIOR TO CONSTRUCTION.

7/10/2022 4:17 PM

X:\20-194 PIKE SOLAR\WILDCAD\PLANS\ELING 10650\GEOC PLAN 2 - INITIAL.DWG

DESIGNED BY: BB

DRAWN BY: SD

CHECKED BY: DB

7/10/2022 4:17 PM

X:\20-194 PIKE SOLAR\WILDCAD\PLANS\ELING 10650\GEOC PLAN 2 - INITIAL.DWG

PIKE SOLAR

EL PASO COUNTY, COLORADO

GRADING & EROSION CONTROL PLANS

INITIAL (16 OF 24)

NOT FOR CONSTRUCTION

DESIGNED BY: BB

DRAWN BY: SD

CHECKED BY: DB

JOB NO. 20-194

SHEET 18 OF 78

Core Consultants, Inc.

34733 S. BROADWAY

DENVER, CO 80113

303.703.4444

LIVEYOURCORE.COM

LAND DEVELOPMENT

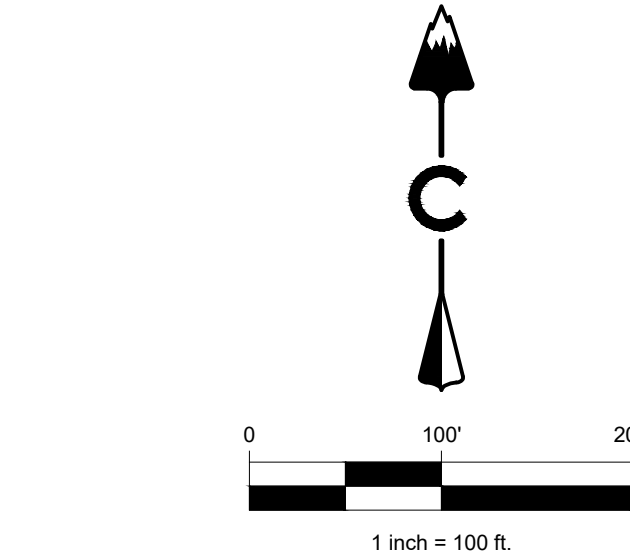
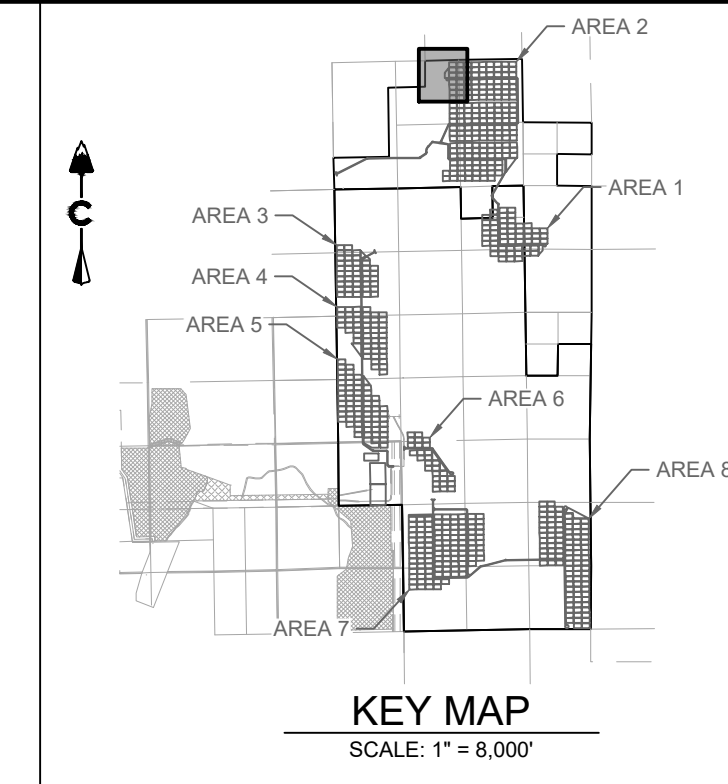
ENERGY

PUBLIC INFRASTRUCTURE



Cut/Fill maps added

show all areas of cut and areas of fill. One overall figure with the two areas shaded may work best for such a large site.



LEGEND			
5280	PROPOSED MAJOR CONTOUR		
5279	PROPOSED MINOR CONTOUR		
5280	EXISTING MAJOR CONTOUR		
5279	EXISTING MINOR CONTOUR		
	LIMITS OF CONSTRUCTION		
	CUT/FILL BOUNDARY		
	REINFORCED CHECK DAM	RCD	
	CONCRETE WASHOUT AREA	CWA	
	DIVERSION DITCH	DD	
	INLET PROTECTION	IP	
	ROCK SOCK	RS	
	SEDIMENT BASIN	SB	
	SEDIMENT CONTROL LOG	SCL	
	SEEDING	SM	
	SILT FENCE	SF	
	STABILIZED STAGING AREA	SSA	
	SEDIMENT TRAP	ST	
	TEMPORARY STREAM CROSSING	TSC	
	VEHICLE TRACKING CONTROL	VTC	
	PERMANENT STREAM CROSSING		
	AGREGATE ACCESS ROAD		
	PERMANENT FENCE	X	
	EXISTING SECTION LINE		
	POND OVERFLOW ROUTE		

- NOTES:**
- SEE COVER SHEET FOR EL PASO COUNTY GEC STANDARD NOTES.
 - SEE SHEETS 74-75 FOR EROSION CONTROL DETAILS.
 - CONTROL MEASURES THAT WERE INSTALLED IN INITIAL STAGE TO BE SHADED AND SHALL BE LEFT IN PLACE IN INTERIM STAGE UNLESS OTHERWISE NOTED.
 - ALL INTERIM EROSION AND SEDIMENT CONTROL MEASURES INCLUDING DRILL SEEDING AND CRIMP MULCHING OF DISTURBED AREAS MUST BE INSTALLED, INSPECTED, AND APPROVED BY THE CITY PRIOR TO THE ISSUANCE OF CONSTRUCTION PERMITS.
 - SOIL COMPACTION WILL BE MINIMIZED IN AREAS THAT WILL BE REVEGETATED AT THE END OF CONSTRUCTION UNLESS INFEASIBLE. SOIL WILL BE SCARIFIED TO REMOVE EFFECTS OF COMPACTION TO THE EXTENT PRACTICABLE BEFORE RESEEDING.
 - SEE CONSTRUCTION PLANS FOR DETAILS OF PERMANENT DRAINAGE FACILITIES SUCH AS DETENTION FACILITIES, WATER QUALITY FACILITIES, CULVERTS, STORM DRAINS, AND OUTLET PROTECTION.

AREA 2 EARTHWORK
CUT: 15,990 CY
FILL: 15,990 CY
TOTAL: 0 CY (BALANCED)

More work below:
Call before you dig.
811

#	REVISION DESCRIPTION	DATE	BY
1	1ST SUBMITTAL	02/25/21	DB
2	BID SET	04/07/21	DB
3	2ND SUBMITTAL	10/20/21	RH
4	SIGNATURE SET	02/04/22	RH

PIKE SOLAR

EL PASO COUNTY, COLORADO

GRADING & EROSION CONTROL PLANS

INTERIM (3 OF 24)

NOT FOR CONSTRUCTION

DESIGNED BY: BB
DRAWN BY: SD
CHECKED BY: DB

JOB NO.
20-194

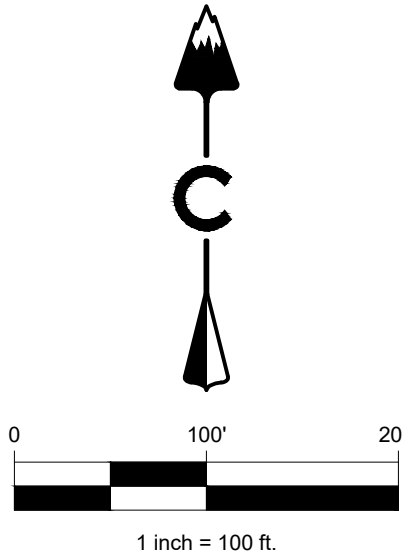
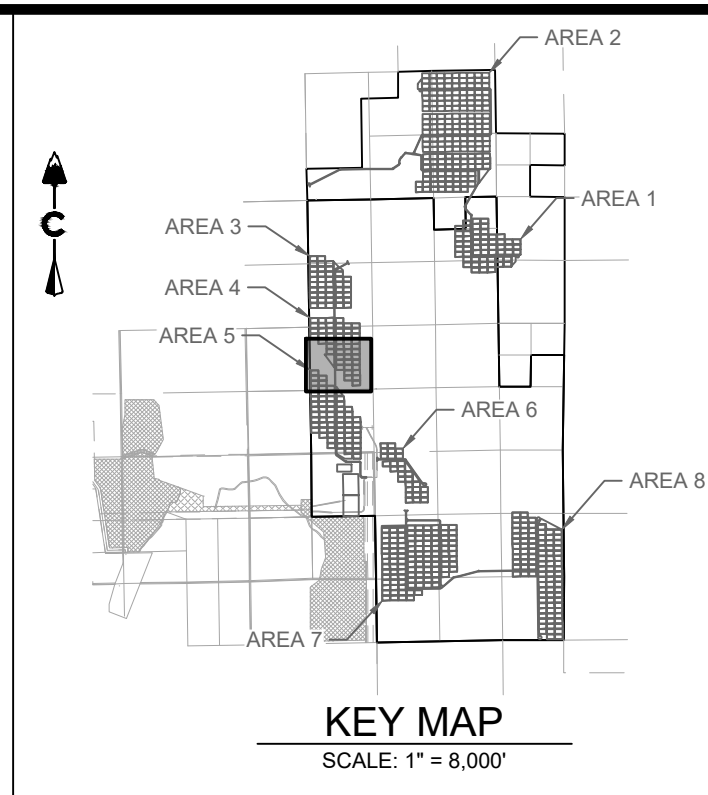
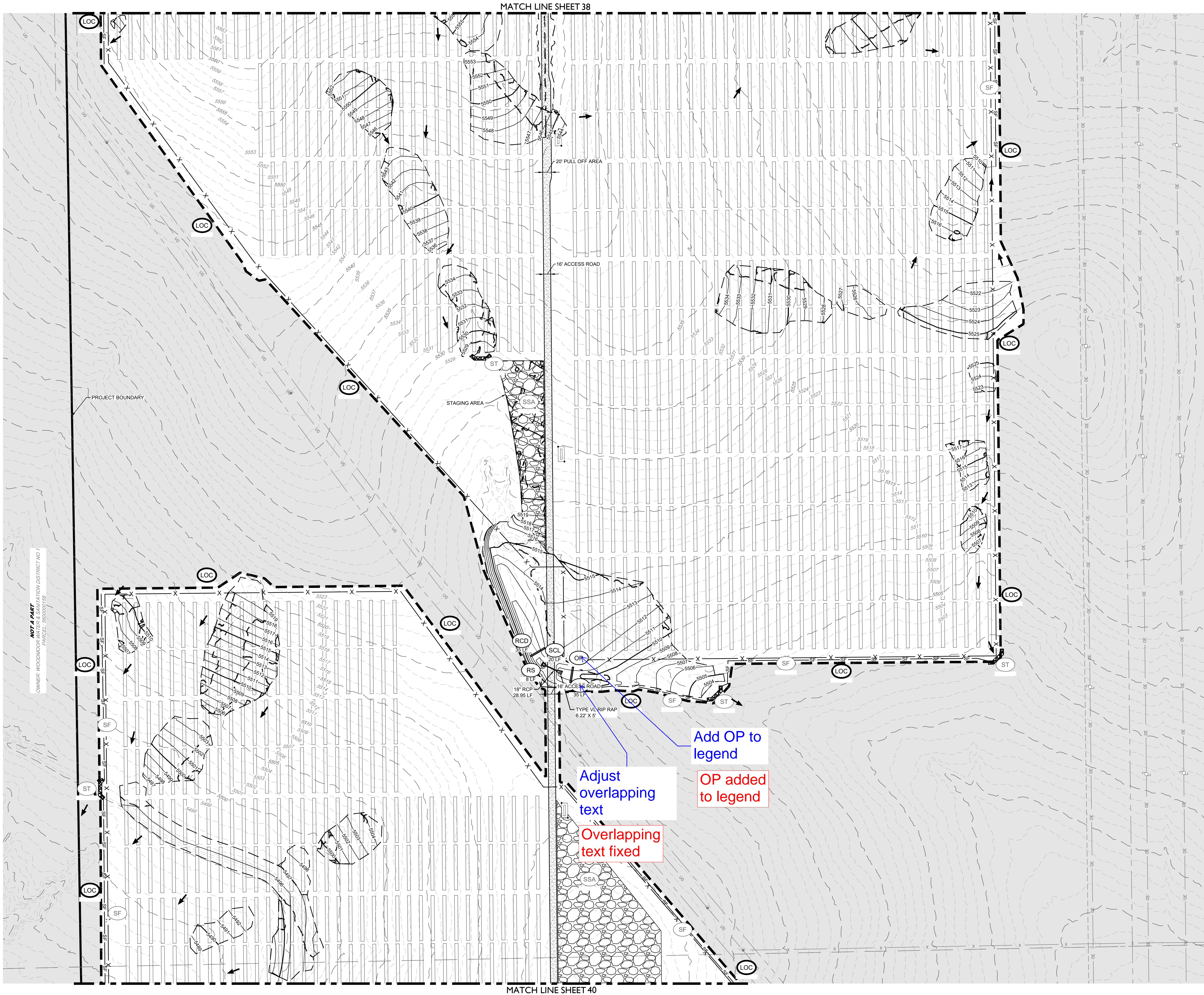
SHEET
29 OF 78

CORE

CORE CONSULTANTS, INC.
3473 S. BROADWAY
DENVER, CO 80113
303.703.4444
LIVEYOURCORE.COM

LAND DEVELOPMENT
ENERGY
PUBLIC INFRASTRUCTURE

NOT A PART
OWNER: WOODMOOR WATER & SANITATION DISTRICT NO 1
PARCEL: 000000159



LEGEND

5280	PROPOSED MAJOR CONTOUR
5279	PROPOSED MINOR CONTOUR
5280	EXISTING MAJOR CONTOUR
5279	EXISTING MINOR CONTOUR
---	LIMITS OF CONSTRUCTION
---	CUT/FILL BOUNDARY
RCD	REINFORCED CHECK DAM
CWA	CONCRETE WASHOUT AREA
DD	DIVERSION DITCH
IP	INLET PROTECTION
RS	ROCK SOCK
SB	SEDIMENT BASIN
SCL	SEDIMENT CONTROL LOG
SM	SEEDING
SF	SILT FENCE
SSA	STABILIZED STAGING AREA
ST	SEDIMENT TRAP
TSC	TEMPORARY STREAM CROSSING
VTC	VEHICLE TRACKING CONTROL
---	PERMANENT STREAM CROSSING
---	AGREGATE ACCESS ROAD
X	PERMANENT FENCE
---	EXISTING SECTION LINE
---	POND OVERFLOW ROUTE

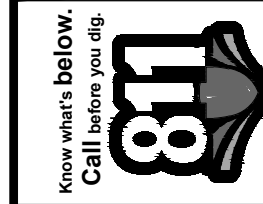
NOTES:

- SEE COVER SHEET FOR EL PASO COUNTY GEC STANDARD NOTES.
- SEE SHEETS 74-75 FOR EROSION CONTROL DETAILS.
- CONTROL MEASURES THAT WERE INSTALLED IN INITIAL STAGE TO BE SHADED AND SHALL BE LEFT IN PLACE IN INTERIM STAGE UNLESS OTHERWISE NOTED.
- ALL INTERIM EROSION AND SEDIMENT CONTROL MEASURES INCLUDING DRILL SEEDING AND CRIMP MULCHING OF DISTURBED AREAS MUST BE INSTALLED, INSPECTED, AND APPROVED BY THE CITY PRIOR TO THE ISSUANCE OF CONSTRUCTION PERMITS.
- SOIL COMPACTION WILL BE MINIMIZED IN AREAS THAT WILL BE REVEGETATED AT THE END OF CONSTRUCTION UNLESS INFEASIBLE. SOIL WILL BE SCARIFIED TO REMOVE EFFECTS OF COMPACTION TO THE EXTENT PRACTICABLE BEFORE RESEEDING.
- SEE CONSTRUCTION PLANS FOR DETAILS OF PERMANENT DRAINAGE FACILITIES SUCH AS DETENTION FACILITIES, WATER QUALITY FACILITIES, CULVERTS, STORM DRAINS, AND OUTLET PROTECTION.

AREA 4 EARTHWORK
CUT: 9,484 CY
FILL: 9,484 CY
TOTAL: 0 CY (BALANCED)

AREA 5 / SUBSTATION EARTHWORK
CUT: 10,000 CY
FILL: 10,000 CY
TOTAL: 0 CY (CUT)

Know what's below.
Call before you dig.



#	REVISION DESCRIPTION	DATE	BY
1	1ST SUBMITTAL	02/25/21	DB
2	BID SET	04/07/21	DB
3	2ND SUBMITTAL	10/20/21	KR
4	SIGNATURE SET	02/04/22	RH

PIKE SOLAR

EL PASO COUNTY, COLORADO

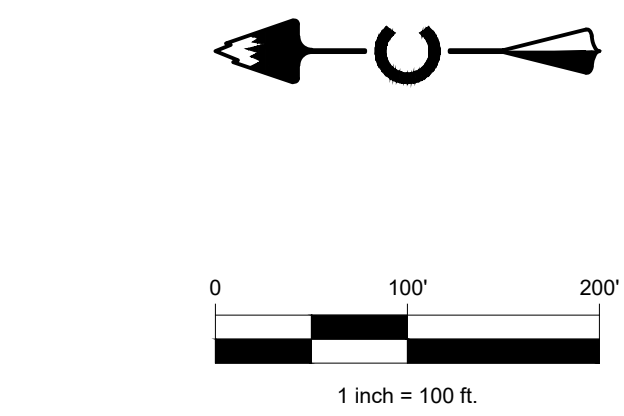
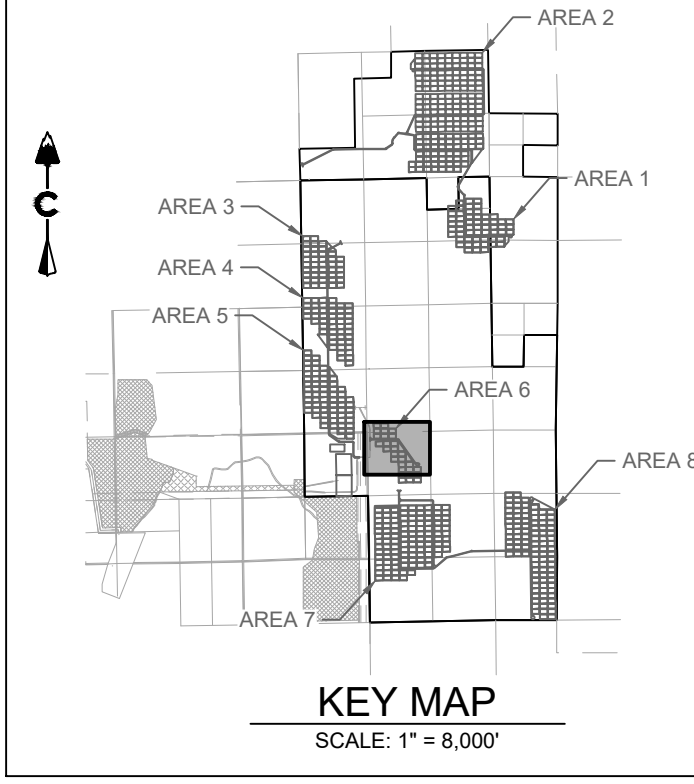
GRADING & EROSION CONTROL PLANS
INTERIM (13 OF 24)

NOT FOR
CONSTRUCTION

DESIGNED BY: BB
DRAWN BY: SD
CHECKED BY: DB

JOB NO.
20-194

SHEET
39 OF 78



LEGEND			
	5280	PROPOSED MAJOR CONTOUR	
	5279	PROPOSED MINOR CONTOUR	
	5278	EXISTING MAJOR CONTOUR	
	5277	EXISTING MINOR CONTOUR	
		LIMITS OF CONSTRUCTION	
		CUT/FILL BOUNDARY	
	RCD	REINFORCED CHECK DAM	
	CWA	CONCRETE WASHOUT AREA	
	DD	DIVERSION DITCH	
	IP	INLET PROTECTION	
	RS	ROCK SOCK	
	SB	SEDIMENT BASIN	
	SCL	SEDIMENT CONTROL LOG	
	SM	SEEDING	
	SF	SILT FENCE	
	SSA	STABILIZED STAGING AREA	
	ST	SEDIMENT TRAP	
	TSC	TEMPORARY STREAM CROSSING	
	VTC	VEHICLE TRACKING CONTROL	
		PERMANENT STREAM CROSSING	
		AGREGATE ACCESS ROAD	
		PERMANENT FENCE	
		EXISTING SECTION LINE	
		POND OVERFLOW ROUTE	

- NOTES:**
- SEE COVER SHEET FOR EL PASO COUNTY GEC STANDARD NOTES.
 - SEE SHEETS 74-75 FOR EROSION CONTROL DETAILS.
 - CONTROL MEASURES THAT WERE INSTALLED IN INITIAL STAGE TO BE SHADED AND SHALL BE LEFT IN PLACE IN INTERIM STAGE UNLESS OTHERWISE NOTED.
 - ALL INTERIM EROSION AND SEDIMENT CONTROL MEASURES INCLUDING DRILL SEEDING AND CRIMP MULCHING OF DISTURBED AREAS MUST BE INSTALLED, INSPECTED, AND APPROVED BY THE CITY PRIOR TO THE ISSUANCE OF CONSTRUCTION PERMITS.
 - SOIL COMPACTION WILL BE MINIMIZED IN AREAS THAT WILL BE REVEGETATED AT THE END OF CONSTRUCTION UNLESS INFEASIBLE. SOIL WILL BE SCRIPED TO REMOVE EFFECTS OF COMPACTION TO THE EXTENT PRACTICABLE BEFORE RESEEDING.
 - SEE CONSTRUCTION PLANS FOR DETAILS OF PERMANENT DRAINAGE FACILITIES SUCH AS DETENTION FACILITIES, WATER QUALITY FACILITIES, CULVERTS, STORM DRAINS, AND OUTLET PROTECTION.

Add OP to legend
OP added to legend

AREA 6 EARTHWORK
CUT: 4,232 CY
FILL: 4,232 CY
TOTAL: 0 CY (BALANCED)

LAND DEVELOPMENT
ENERGY
PUBLIC INFRASTRUCTURE

CORE

Know what's below.
Call before you dig.
811

DESIGNED BY: BB
DRAWN BY: SD
CHECKED BY: DB

NOT FOR CONSTRUCTION

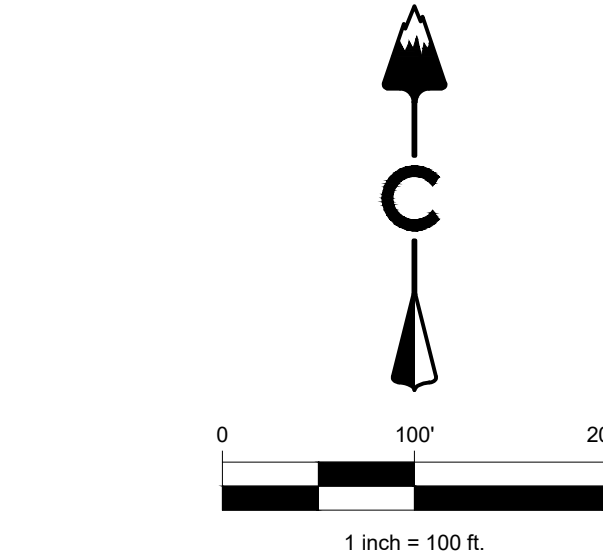
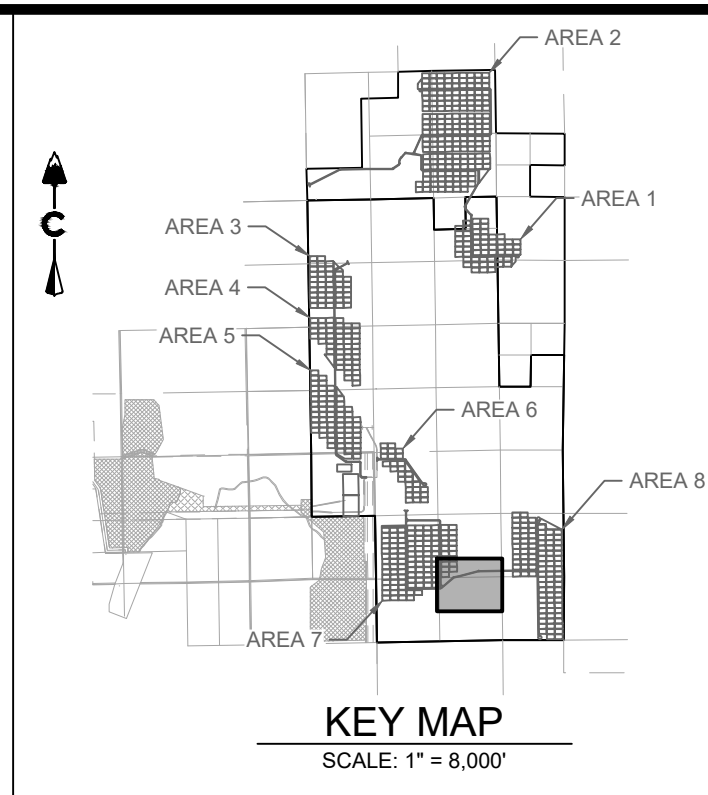
JOB NO.
20-194
SHEET
42 OF 78

PIKE SOLAR
EL PASO COUNTY, COLORADO
GRADING & EROSION CONTROL PLANS
INTERIM (16 OF 24)

DATE BY
REVISION DESCRIPTION
1 1ST SUBMITTAL DB
2 BID SET DB
3 2ND SUBMITTAL RB
4 SIGNATURE SET DB

CORE CONSULTANTS, INC.
34733 S. BROADWAY
DENVER, CO 80113
303.703.4444
LIVEYOURCORE.COM

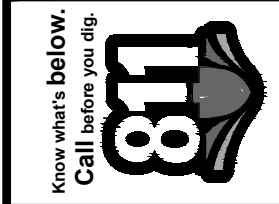
PPR-22-008



LEGEND			
5280	PROPOSED MAJOR CONTOUR		
5279	PROPOSED MINOR CONTOUR		
5280	EXISTING MAJOR CONTOUR		
5279	EXISTING MINOR CONTOUR		
	LIMITS OF CONSTRUCTION		
	CUT/FILL BOUNDARY		
	RCD	REINFORCED CHECK DAM	
	CWA	CONCRETE WASHOUT AREA	
	DD	DIVERSION DITCH	
	IP	INLET PROTECTION	
	RS	ROCK SOCK	
	SB	SEDIMENT BASIN	
	SCL	SEDIMENT CONTROL LOG	
	SM	SEEDING	
	SF	SILT FENCE	
	SSA	STABILIZED STAGING AREA	
	ST	SEDIMENT TRAP	
	TSC	TEMPORARY STREAM CROSSING	
	VTC	VEHICLE TRACKING CONTROL	
		PERMANENT STREAM CROSSING	
		AGREGATE ACCESS ROAD	
	X	PERMANENT FENCE	
		EXISTING SECTION LINE	
		POND OVERFLOW ROUTE	

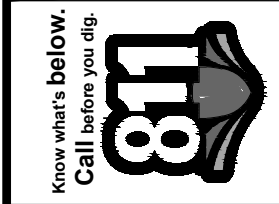
- NOTES:**
- SEE COVER SHEET FOR EL PASO COUNTY GEC STANDARD NOTES.
 - SEE SHEETS 74-75 FOR EROSION CONTROL DETAILS.
 - CONTROL MEASURES THAT WERE INSTALLED IN INITIAL STAGE TO BE SHADED AND SHALL BE LEFT IN PLACE IN INTERIM STAGE UNLESS OTHERWISE NOTED.
 - ALL INTERIM EROSION AND SEDIMENT CONTROL MEASURES INCLUDING DRILL SEEDING AND CRIMP MULCHING OF DISTURBED AREAS MUST BE INSTALLED, INSPECTED, AND APPROVED BY THE CITY PRIOR TO THE ISSUANCE OF CONSTRUCTION PERMITS.
 - SOIL COMPACTION WILL BE MINIMIZED IN AREAS THAT WILL BE REVEGETATED AT THE END OF CONSTRUCTION UNLESS INFEASIBLE. SOIL WILL BE SCARIFIED TO REMOVE EFFECTS OF COMPACTION TO THE EXTENT PRACTICABLE BEFORE RESEEDING.
 - SEE CONSTRUCTION PLANS FOR DETAILS OF PERMANENT DRAINAGE FACILITIES SUCH AS DETENTION FACILITIES, WATER QUALITY FACILITIES, CULVERTS, STORM DRAINS, AND OUTLET PROTECTION.

AREA 7 EARTHWORK
CUT: 39,039 CY
FILL: 39,039 CY
TOTAL: 0 CY (BALANCED)



CORE CONSULTANTS, INC.
3473 S. BROADWAY
DENVER, CO 80113
303.703.4444
LIVEYOURCORE.COM

CORE



#	REVISION DESCRIPTION	DATE	BY
1	1ST SUBMITTAL	02/25/21	DB
2	BID SET	04/07/21	DB
3	2ND SUBMITTAL	10/20/21	RB
4	SIGNATURE SET	02/04/22	RH

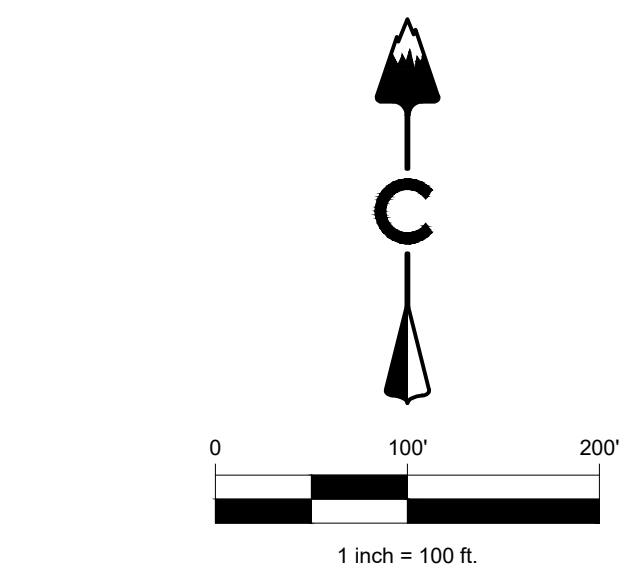
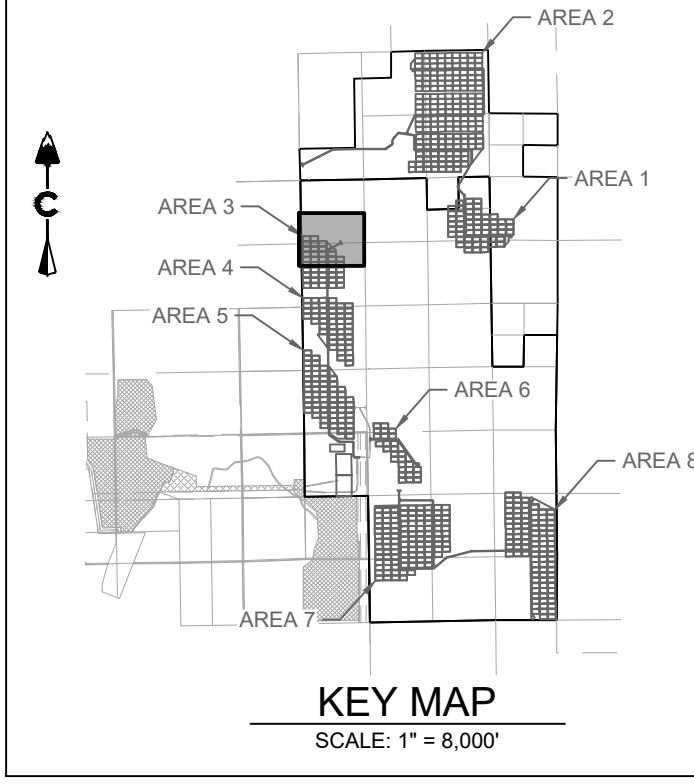
PIKE SOLAR
EL PASO COUNTY, COLORADO
GRADING & EROSION CONTROL PLANS
INTERIM (20 OF 24)

NOT FOR
CONSTRUCTION

DESIGNED BY: BB
DRAWN BY: SD
CHECKED BY: DB

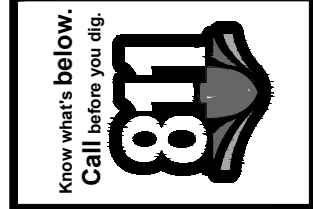
JOB NO.
20-194
SHEET
46 OF 78

NOT A PART
OWNER: WOODDOOR WATER & SANITATION DISTRICT NO. 1
PARCEL: 560000169



LEGEND			
	5280	PROPOSED MAJOR CONTOUR	
	5279	PROPOSED MINOR CONTOUR	
	5280	EXISTING MAJOR CONTOUR	
	5279	EXISTING MINOR CONTOUR	
		LIMITS OF CONSTRUCTION	
		CUT/FILL BOUNDARY	
	RCD	REINFORCED CHECK DAM	
	CWA	CONCRETE WASHOUT AREA	
	DD	DIVERSION DITCH	
	IP	INLET PROTECTION	
	RS	ROCK SOCK	
	SB	SEDIMENT BASIN	
	SCL	SEDIMENT CONTROL LOG	
	SM	SEEDING	
	SF	SILT FENCE	
	SSA	STABILIZED STAGING AREA	
	ST	SEDIMENT TRAP	
	TSC	TEMPORARY STREAM CROSSING	
	VTC	VEHICLE TRACKING CONTROL	
		PERMANENT STREAM CROSSING	
		AGREGATE ACCESS ROAD	
	X	PERMANENT FENCE	
		EXISTING SECTION LINE	
		POND OVERFLOW ROUTE	

- NOTES:**
- SEE COVER SHEET FOR EL PASO COUNTY GEC STANDARD NOTES.
 - SEE SHEETS 74-75 FOR EROSION CONTROL DETAILS.
 - SHADED CONTROL MEASURES WERE INSTALLED IN INITIAL OR INTERIM PLANS AND, UNLESS OTHERWISE INDICATED SHALL BE LEFT IN PLACE UNTIL REVEGETATION ESTABLISHMENT IS APPROVED BY THE CITY.
 - SEE CONSTRUCTION PLANS FOR DETAILS OF PERMANENT DRAINAGE FACILITIES SUCH AS DETENTION FACILITIES, WATER QUALITY FACILITIES, CULVERTS, STORM DRAINS, AND OUTLET PROTECTION.



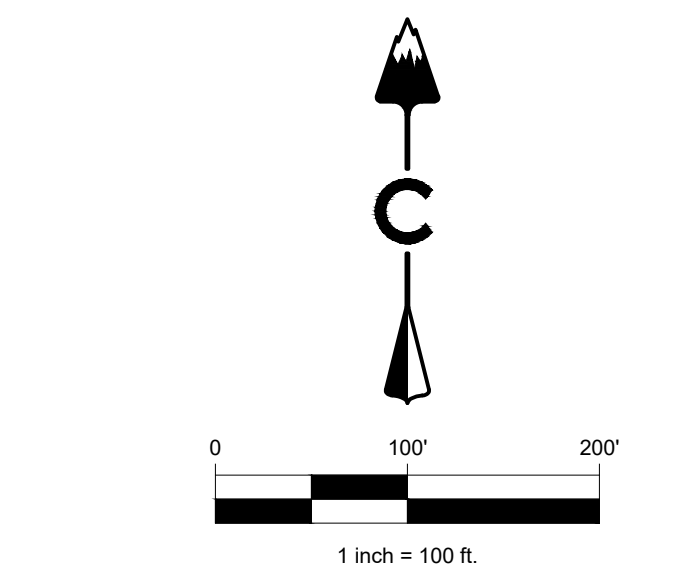
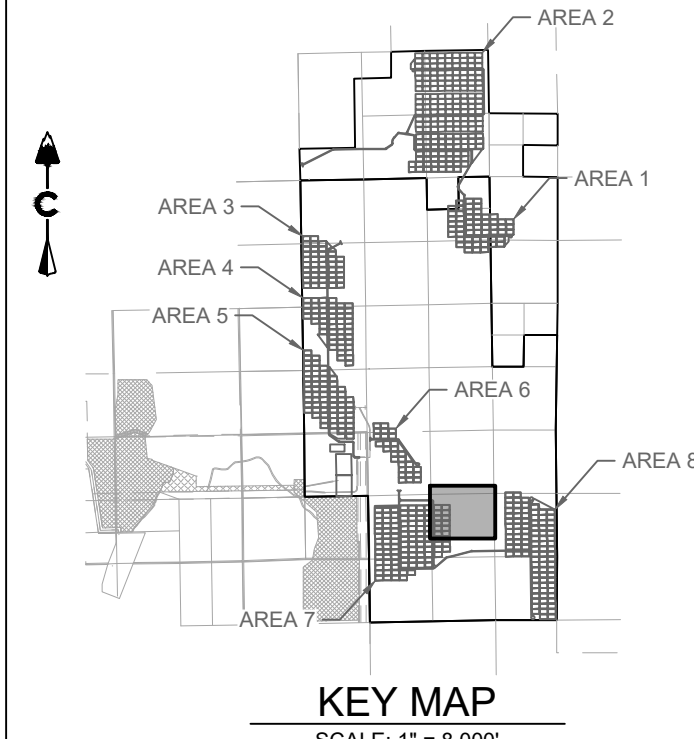
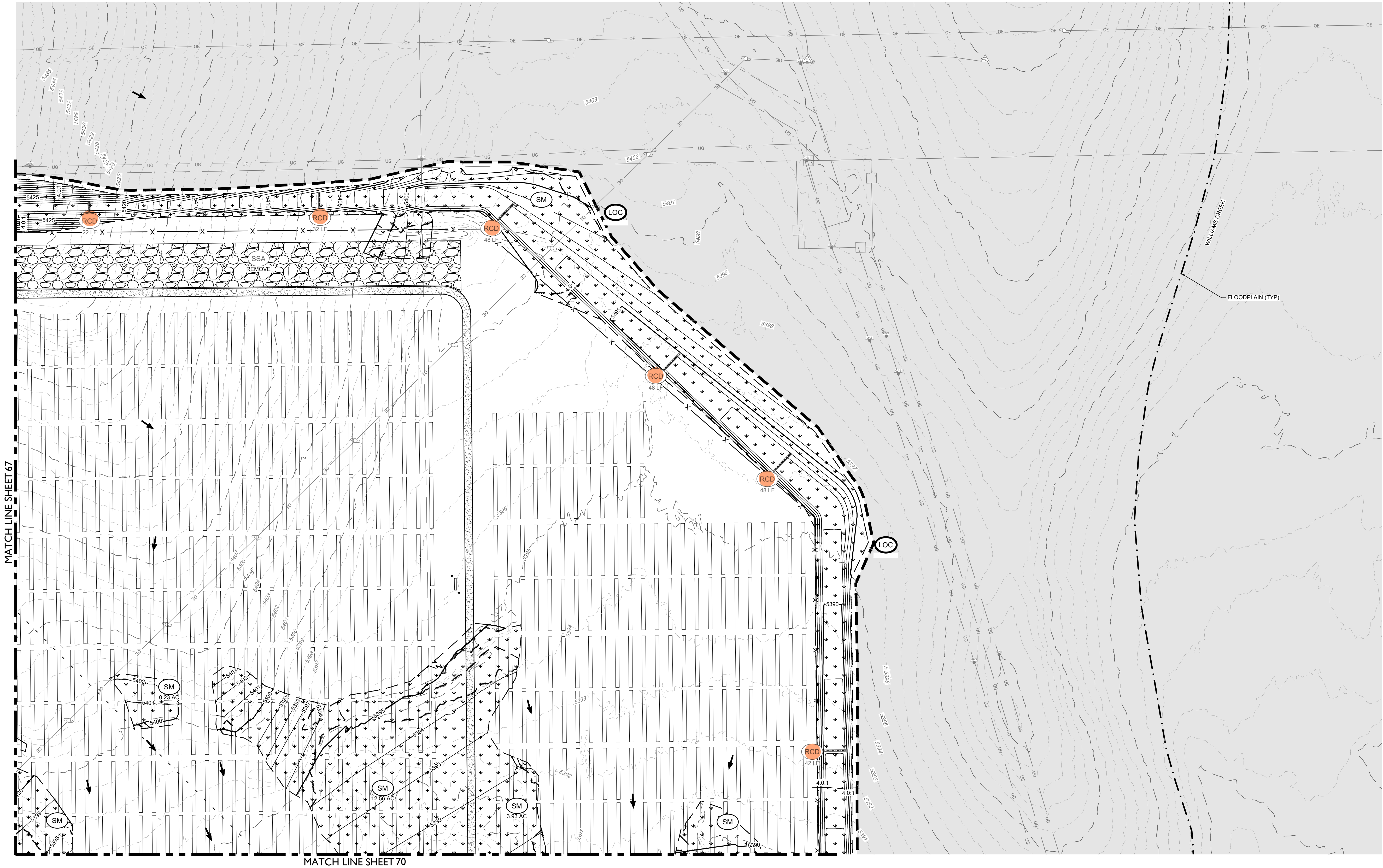
#	REVISION DESCRIPTION	DATE	BY
1	1ST SUBMITTAL	02/25/21	DB
2	BID SET	04/07/21	DB
3	2ND SUBMITTAL	10/20/21	RH
4	SIGNATURE SET	02/04/22	RH

PIKE SOLAR
EL PASO COUNTY, COLORADO
GRADING & EROSION CONTROL PLANS
FINAL (11 OF 24)

NOT FOR CONSTRUCTION

DESIGNED BY: BB
DRAWN BY: SD
CHECKED BY: DB

JOB NO.
20-194
SHEET
61 OF 78



LEGEND	
	PROPOSED MAJOR CONTOUR
	PROPOSED MINOR CONTOUR
	EXISTING MAJOR CONTOUR
	EXISTING MINOR CONTOUR
	LIMITS OF CONSTRUCTION
	CUT/FILL BOUNDARY
	REINFORCED CHECK DAM
	CONCRETE WASHOUT AREA
	DIVERSION DITCH
	INLET PROTECTION
	ROCK SOCK
	SEDIMENT BASIN
	SEDIMENT CONTROL LOG
	SEEDING
	SILT FENCE
	STABILIZED STAGING AREA
	SEDIMENT TRAP
	TEMPORARY STREAM CROSSING
	VEHICLE TRACKING CONTROL
	PERMANENT STREAM CROSSING
	AGREGATE ACCESS ROAD
	PERMANENT FENCE
	EXISTING SECTION LINE
	POND OVERFLOW ROUTE

NOTES:

1. SEE COVER SHEET FOR EL PASO COUNTY GEC STANDARD NOTES.
2. SEE SHEETS 74-75 FOR EROSION CONTROL DETAILS.
3. SHADED CONTROL MEASURES WERE INSTALLED IN INITIAL OR INTERIM PLANS AND, UNLESS OTHERWISE INDICATED SHALL BE LEFT IN PLACE UNTIL REVEGETATION ESTABLISHMENT IS APPROVED BY THE CITY.
4. SEE CONSTRUCTION PLANS FOR DETAILS OF PERMANENT DRAINAGE FACILITIES SUCH AS DETENTION FACILITIES, WATER QUALITY FACILITIES, CULVERTS, STORM DRAINS, AND OUTLET PROTECTION.

LAND DEVELOPMENT
ENERGY
PUBLIC INFRASTRUCTURE

CORE CONSULTANTS, INC.
3473 S. BROADWAY
DENVER, CO 80113
303.703.4444
LIVEYOURCORE.COM

CORE

Know what's below.
Call before you dig.

811

#	REVISION DESCRIPTION	DATE	BY
1	1ST SUBMITTAL	02/25/21	DB
2	BID SET	04/07/21	DB
3	2ND SUBMITTAL	10/20/21	KR
4	SIGNATURE SET	02/04/22	RH

PIKE SOLAR

EL PASO COUNTY, COLORADO

GRADING & EROSION CONTROL PLANS

FINAL (18 OF 24)

NOT FOR
CONSTRUCTION

DESIGNED BY: BB
DRAWN BY: SD
CHECKED BY: DB

JOB NO.
20-194

SHEET
68 OF 78

PPR-22-008

