


| REV | DRAWN        | REVIEWED | REVISION NOTES                      |
|-----|--------------|----------|-------------------------------------|
| A   | DGD 12/5/21  |          | SITE DEVELOPMENT PLAN UPDATE        |
| B   | RMC 02/08/22 |          | SITE DEVELOPMENT PLAN - RESUBMITTAL |
| C   | RMC 07/08/22 |          |                                     |

|  |   |
|--|---|
|                                       | 1 |
| juwi Inc.<br>10 29th St. Suite 1068<br>Boulder, CO 80301<br><a href="http://www.juwiamerica.com">www.juwiamerica.com</a> |   |

|                           |   |   |   |
|---------------------------|---|---|---|
| PIKE SOLAR                | 5 | 4 | 3 |
| 223.6 MW DC, 175.00 MW AC |   |   |   |
| EL PASO COUNTY, CO        |   |   |   |

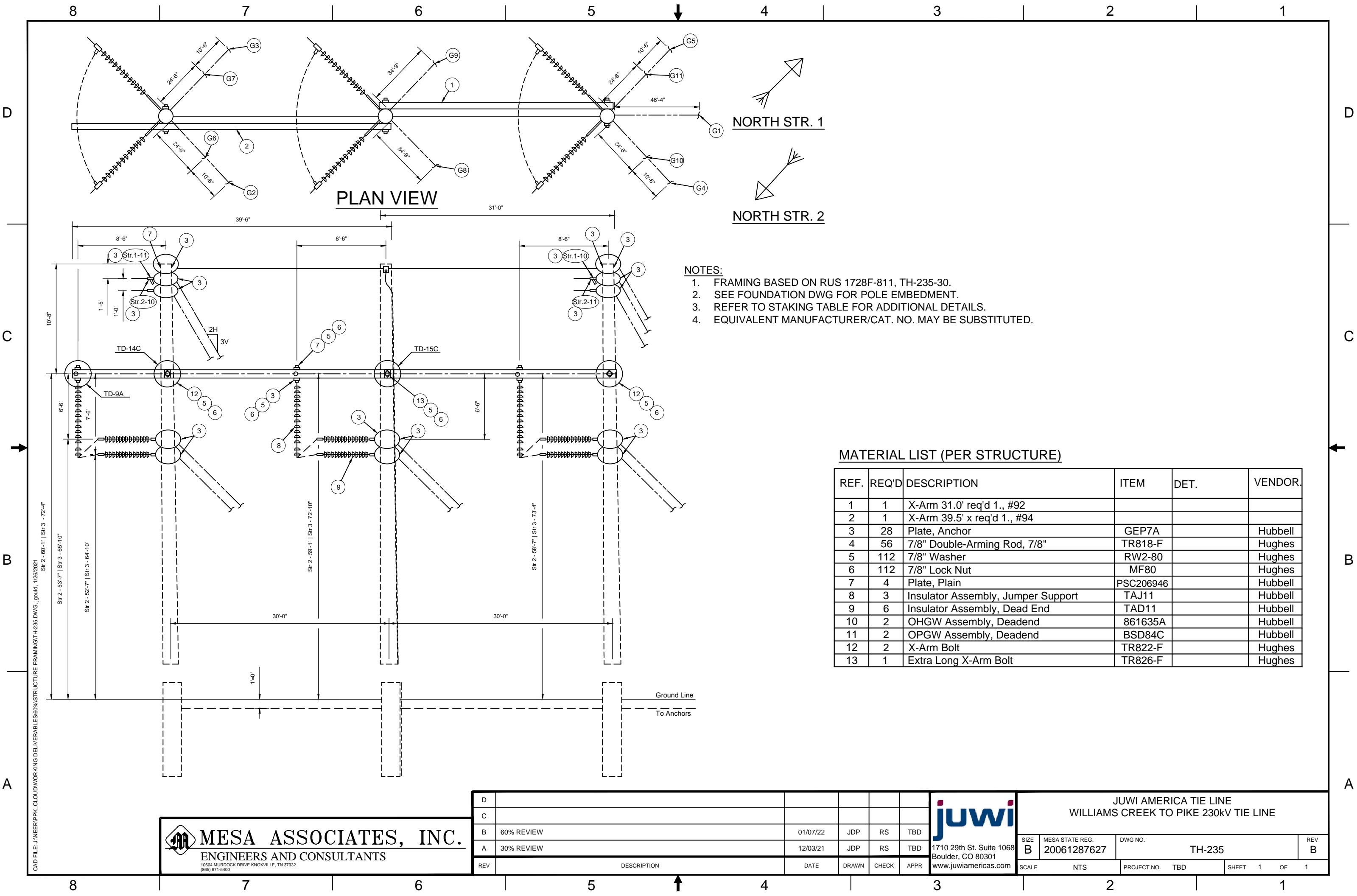
|                          |    |
|--------------------------|----|
| SITE DEVELOPMENT<br>PLAN | 8  |
|                          | 9  |
|                          | 10 |
|                          | 11 |
|                          | 12 |
|                          | 13 |
|                          | 14 |
| 15                       |    |
| 16                       |    |

NOT FOR CONSTRUCTION

|                              |    |
|------------------------------|----|
| PROPRIETARY AND CONFIDENTIAL | 10 |
| TO BE REPRODUCED IN COLOR    |    |
| PRINT SIZE: ARCH D           |    |
| ISSUED BY: JSI               |    |
| JOB #: CO465                 |    |
| SCALE: NTS                   |    |
| WVG #:                       |    |

G401

WAG TITLE: SITE PLAN ELEVATIONS



- NOTES:
- 1. FRAMING BASED ON RUS 1728F-811, TH-235-30.
  - 2. SEE FOUNDATION DWG FOR POLE EMBEDMENT.
  - 3. REFER TO STAKING TABLE FOR ADDITIONAL DETAILS.
  - 4. EQUIVALENT MANUFACTURER/CAT. NO. MAY BE SUBSTITUTED.

MATERIAL LIST (PER STRUCTURE)

| REF. | REQ'D | DESCRIPTION                        | ITEM      | DET. | VENDOR. |
|------|-------|------------------------------------|-----------|------|---------|
| 1    | 1     | X-Arm 31.0' req'd 1., #92          |           |      |         |
| 2    | 1     | X-Arm 39.5' x req'd 1., #94        |           |      |         |
| 3    | 28    | Plate, Anchor                      | GEP7A     |      | Hubbell |
| 4    | 56    | 7/8" Double-Arming Rod, 7/8"       | TR818-F   |      | Hughes  |
| 5    | 112   | 7/8" Washer                        | RW2-80    |      | Hughes  |
| 6    | 112   | 7/8" Lock Nut                      | MF80      |      | Hughes  |
| 7    | 4     | Plate, Plain                       | PSC206946 |      | Hubbell |
| 8    | 3     | Insulator Assembly, Jumper Support | TAJ11     |      | Hubbell |
| 9    | 6     | Insulator Assembly, Dead End       | TAD11     |      | Hubbell |
| 10   | 2     | OHGW Assembly, Deadend             | 861635A   |      | Hubbell |
| 11   | 2     | OPGW Assembly, Deadend             | BSD84C    |      | Hubbell |
| 12   | 2     | X-Arm Bolt                         | TR822-F   |      | Hughes  |
| 13   | 1     | Extra Long X-Arm Bolt              | TR826-F   |      | Hughes  |




MESA ASSOCIATES, INC.

ENGINEERS AND CONSULTANTS

10604 MURDOCK DRIVE KNOXVILLE, TN 37932  
(865) 671-5400

|     |             |          |       |       |      |
|-----|-------------|----------|-------|-------|------|
| D   |             |          |       |       |      |
| C   |             |          |       |       |      |
| B   | 60% REVIEW  | 01/07/22 | JDP   | RS    | TBD  |
| A   | 30% REVIEW  | 12/03/21 | JDP   | RS    | TBD  |
| REV | DESCRIPTION | DATE     | DRAWN | CHECK | APPR |



1710 29th St. Suite 1068  
Boulder, CO 80301  
www.juwiamericas.com

|  |                                |                   |          |  |  |
|--|--------------------------------|-------------------|----------|--|--|
| JUWI AMERICA TIE LINE<br>WILLIAMS CREEK TO PIKE 230KV TIE LINE |                                |                   |          |  |  |
| SIZE<br>B  | MESA STATE REG.<br>20061287627 | DWG NO.<br>TH-235 | REV<br>B |  |  |
| SCALE<br>NTS   | PROJECT NO.<br>TBD             | SHEET<br>1        | OF<br>1  |  |  |

D

C

B

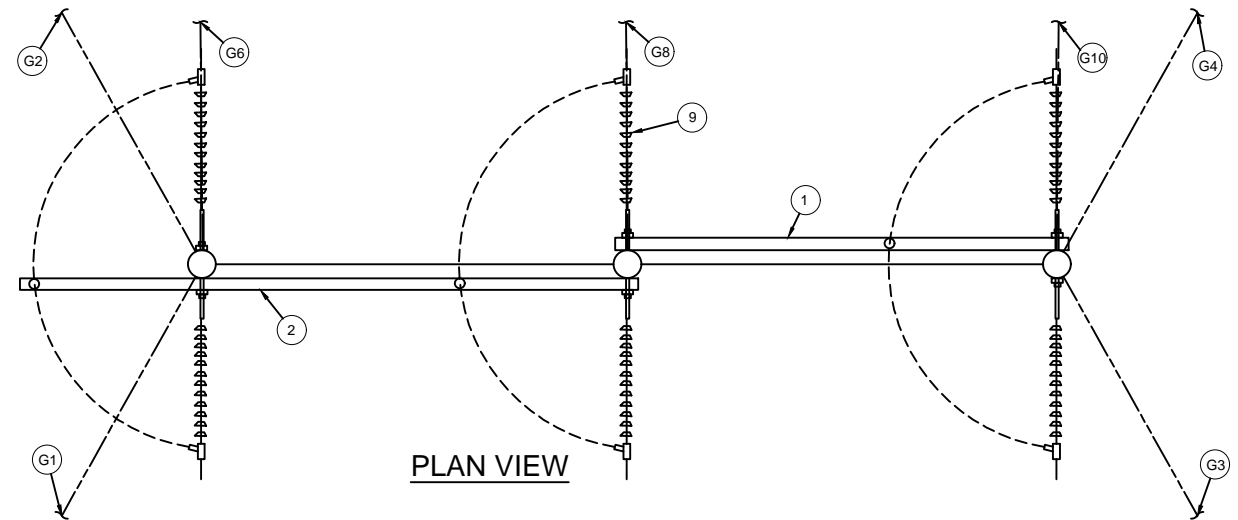
A

D

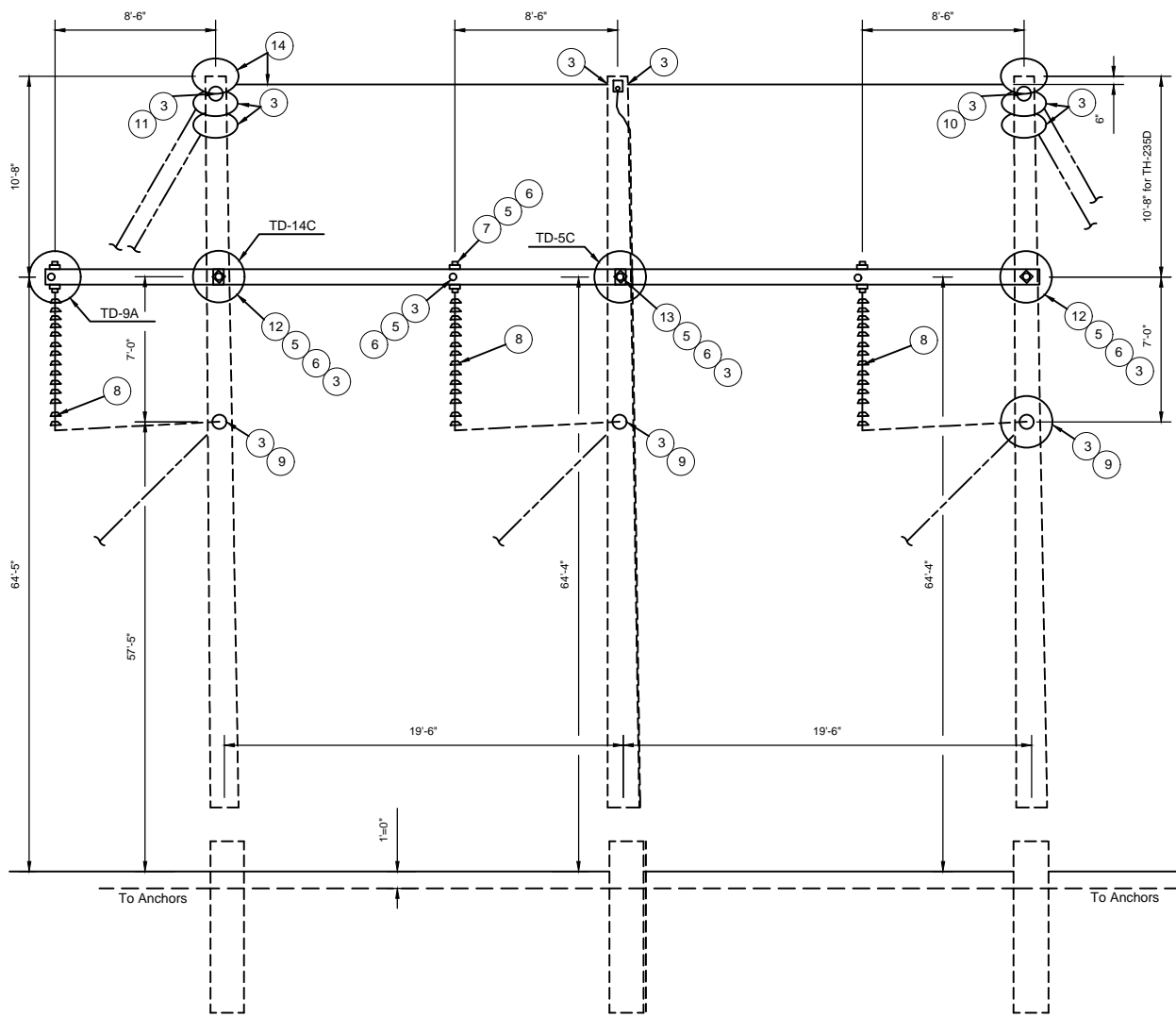
C

B

A



PLAN VIEW



PROFILE VIEW

MATERIAL LIST

| REF. | REQ'D | DESCRIPTION                        | ITEM      | DET. | VENDOR. |
|------|-------|------------------------------------|-----------|------|---------|
| 1    | 1     | X-Arm 20.5' req'd 1., #92          |           |      |         |
| 2    | 1     | X-Arm 29.0' x req'd 1., #94        |           |      |         |
| 3    | 20    | Plate, Anchor                      | GEP7A     |      | Hubbell |
| 4    | 40    | 7/8" Double-Arming Rod, 7/8"       | TR818-F   |      | Hughes  |
| 5    | 80    | 7/8" Washer                        | RW2-80    |      | Hughes  |
| 6    | 80    | 7/8" Lock Nut                      | MF80      |      | Hughes  |
| 7    | 12    | Plate, Plain                       | PSC206946 |      | Hubbell |
| 8    | 3     | Insulator Assembly, Jumper Support | TAJ11     |      | Hubbell |
| 9    | 6     | Insulator Assembly, Dead End       | TAD11     |      | Hubbell |
| 10   | 2     | OHGW Assembly, Deadend             | 861635A   |      | Hubbell |
| 11   | 2     | OPGW Assembly, Deadend             | BSD84C    |      | Hubbell |
| 12   | 2     | X-Arm Bolt                         | TR822-F   |      | Hughes  |
| 13   | 1     | Extra Long X-Arm Bolt              | TR826-F   |      | Hughes  |

NOTES:

- FRAMING BASED ON RUS 1728F-811, TH-235D.
- SEE FOUNDATION DWG FOR POLE EMBEDMENT.
- REFER TO STAKING TABLE FOR ADDITIONAL DETAILS.
- EQUIVALENT MANUFACTURER/CAT. NO. MAY BE SUBSTITUTED.



MESA ASSOCIATES, INC.

ENGINEERS AND CONSULTANTS

10604 MURDOCK DRIVE KNOXVILLE, TN 37932  
(865) 671-5400

|     |             |          |       |       |      |
|-----|-------------|----------|-------|-------|------|
| D   |             |          |       |       |      |
| C   |             |          |       |       |      |
| B   | 60% REVIEW  | 01/07/22 | JDP   | RS    | TBD  |
| A   | 30% REVIEW  | 12/03/21 | JDP   | RS    | TBD  |
| REV | DESCRIPTION | DATE     | DRAWN | CHECK | APPR |



1710 29th St. Suite 1068  
Boulder, CO 80301  
www.juwiamericas.com

JUWI AMERICA TIE LINE  
WILLIAMS CREEK TO PIKE 230KV TIE LINE

|              |                                |                     |          |
|--------------|--------------------------------|---------------------|----------|
| SIZE<br>B    | MESA STATE REG.<br>20061287627 | DWG NO.<br>TH-235-D | REV<br>B |
| SCALE<br>NTS | PROJECT NO.<br>TBD             | SHEET<br>1 OF 1     |          |

CAD FILE: J:\NEER\PPK\_CLOUD\WORKING\DELIVERABLES\60%\STRUCTURE FRAMING\TH-235D.DWG, jgould, 1/26/2021

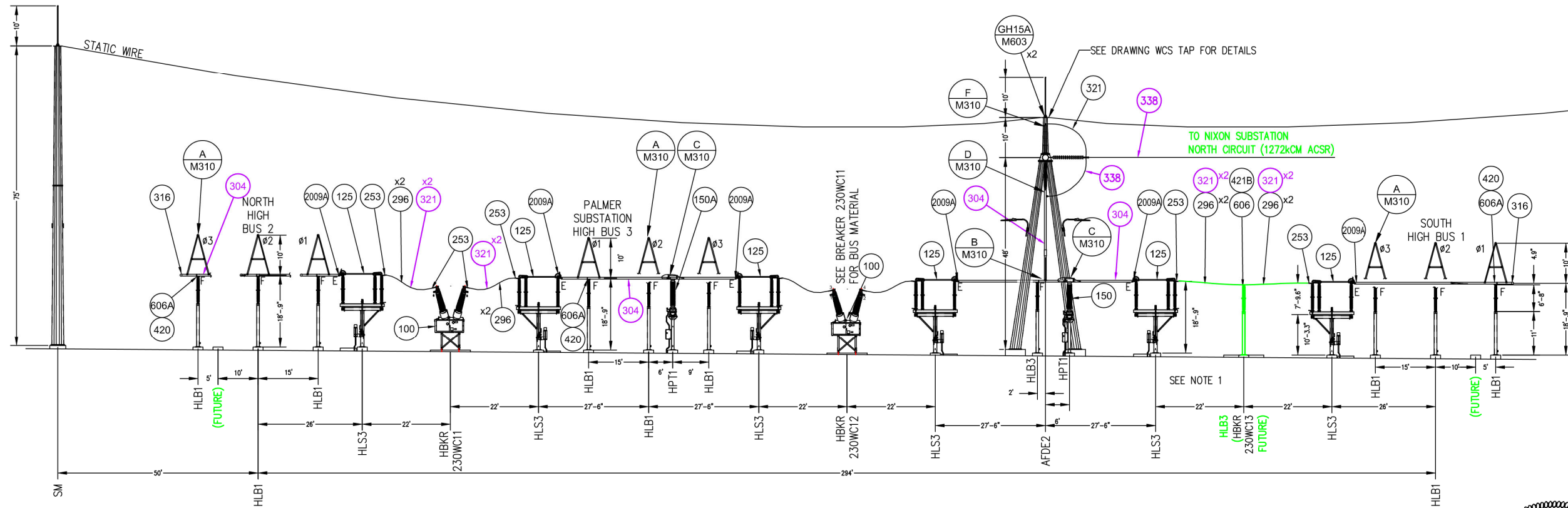


M:\DESIGN\06211008.WILLIAMS CREEK SUBSTATION\MECHANICAL DRAWINGS\WCM301.DWG: DARRIA D. PATTERSON, 20 December 2021 10:44:07 AM

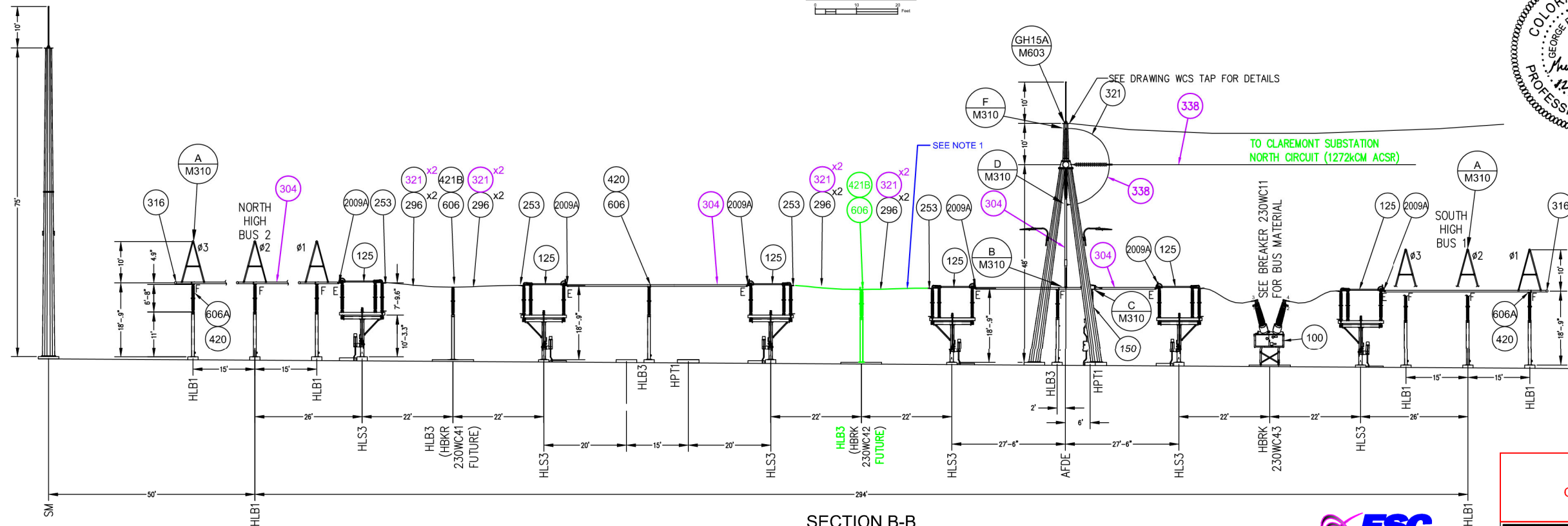
NOTES:  
1. THE CONDUCTOR AND ASSOCIATED TERMINATION SHALL BE CUT TO SIZE AND REUSED.

NERC COMPLIANCE TABLE

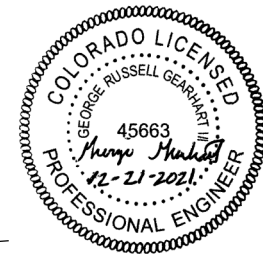
|     |                               |
|-----|-------------------------------|
| 304 | 5.0" IPS BUS SCH. 40 ALUMINUM |
| 321 | 1081 KCM AAAC, 37 STR         |
| 338 | 1272.0 KCM ACSR, (45/7)       |



SECTION A-A



SECTION B-B



IFC  
OVERALL



COLORADO SPRINGS UTILITIES  
SUBSTATION & TRANSMISSION ENGINEERING  
WILLIAMS CREEK SUBSTATION  
SECTIONS

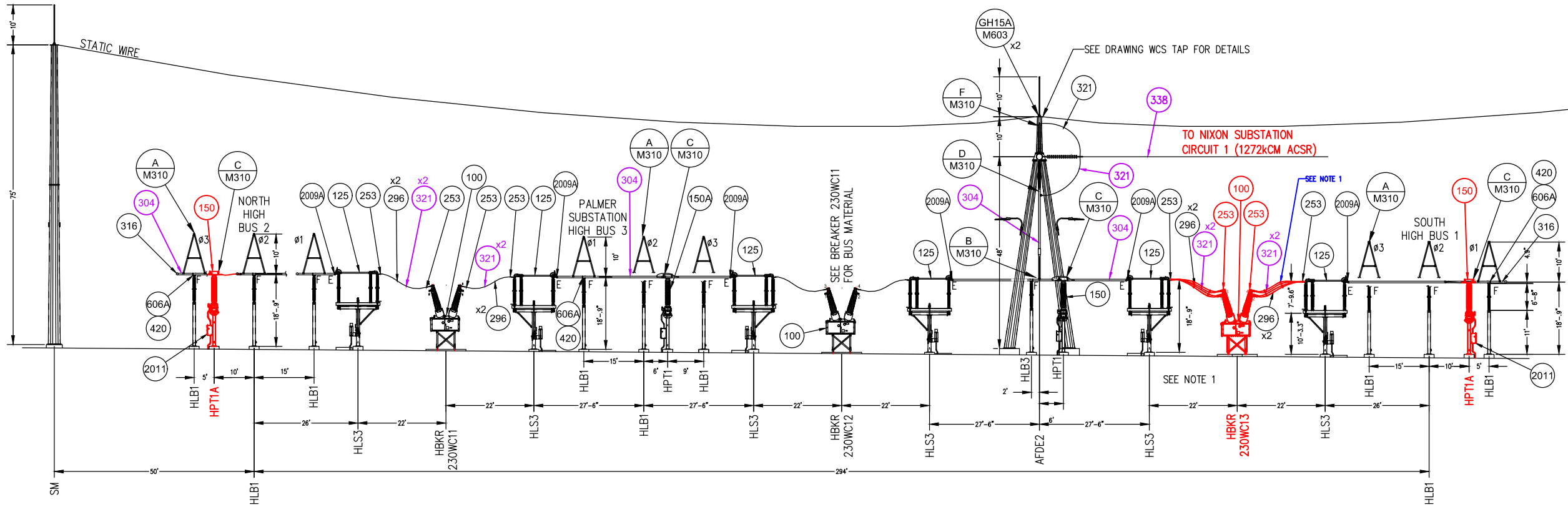
WCM301

FOR INFORMATIONAL PURPOSES ONLY

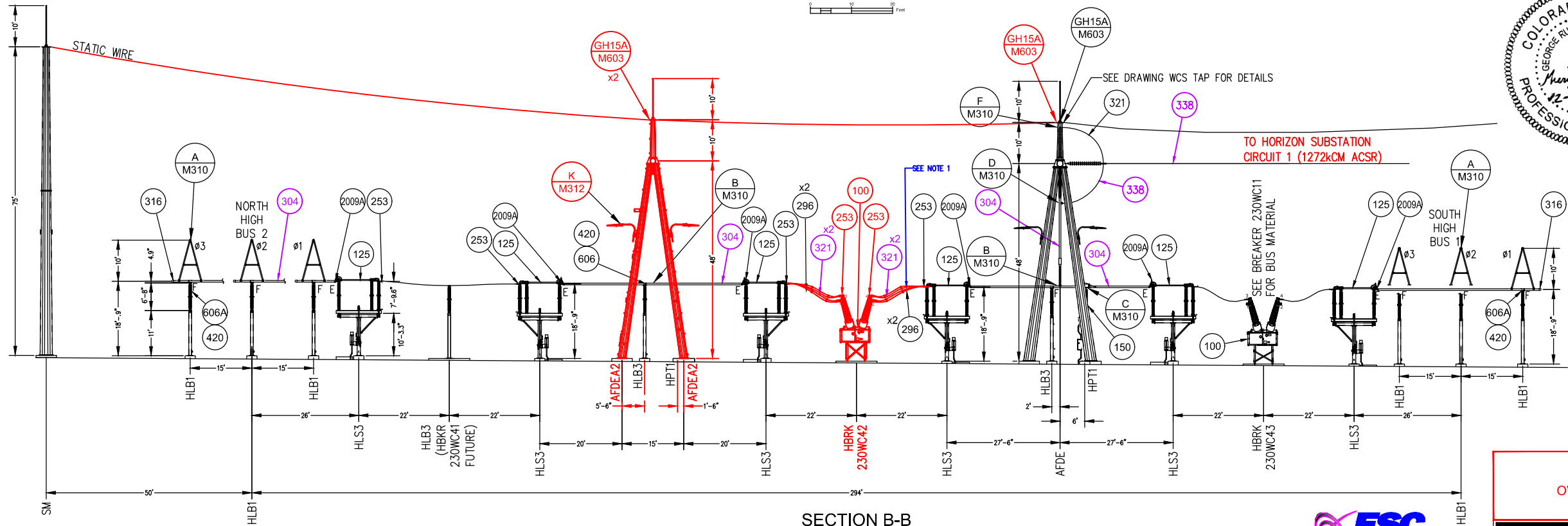
M:\DESIGN\06211008\00\WILLIAMS CREEK SUBSTATION\MECHANICAL DRAWINGS\WCM301.DWG, DARIA D. PATTERSON, 20 December 2021 10:43:46 AM

NOTES:  
1. THE CONDUCTOR AND ASSOCIATED TERMINATION SHALL BE CUT TO SIZE AND REUSED.

| NERC COMPLIANCE TABLE |                               |
|-----------------------|-------------------------------|
| 304                   | 5.0" IPS BUS SCH. 40 ALUMINUM |
| 321                   | 1081 KCM AAAC, 37 STR         |
| 338                   | 1272.0 KCM ACSR, (45/7)       |



SECTION A-A



SECTION B-B



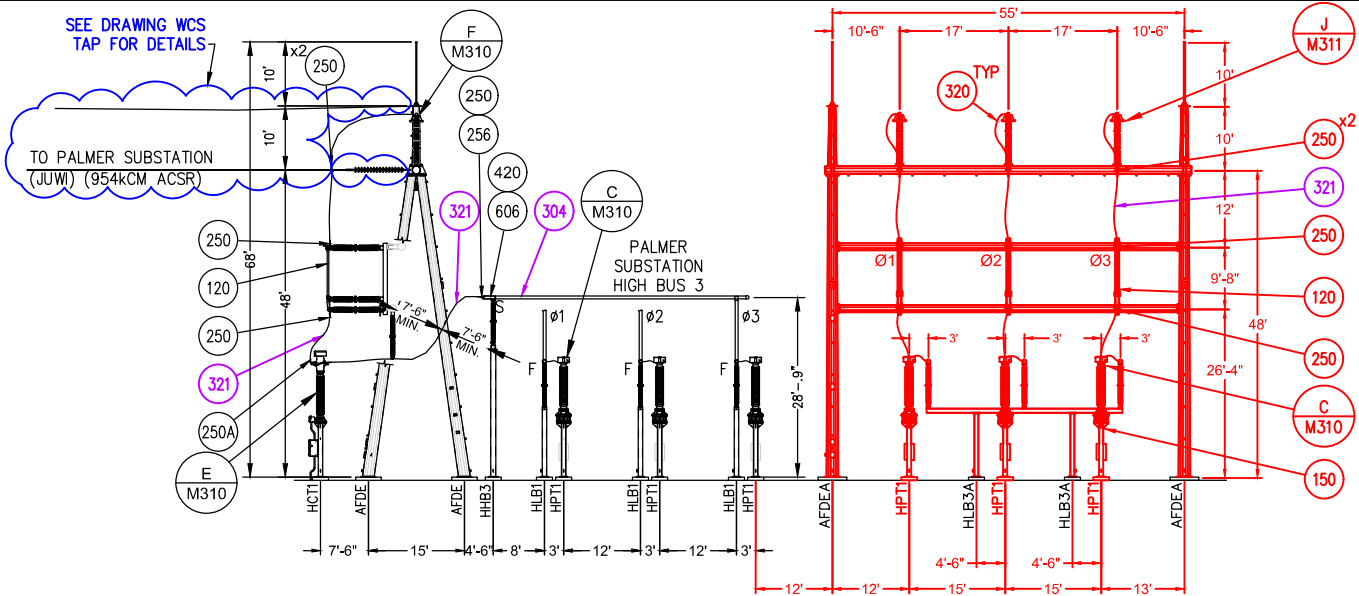
IFC  
OVERALL

**BARR**  
Project Office:  
BARR ENGINEERING CO.  
603 South Cherry Street  
Suite 510  
Denver, CO 80246  
Corporate Headquarters:  
Minneapolis, Minnesota  
Ph: 1-800-432-2277  
Fax: 1-952-832-2601  
www.barr.com

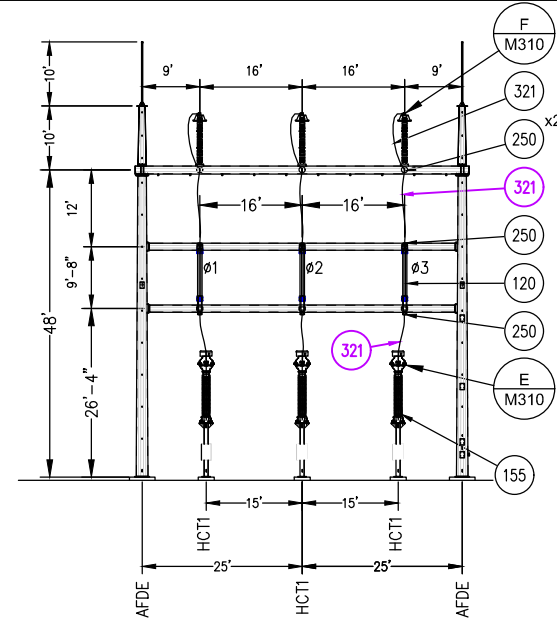
|                                       |  |               |    |          |                          |     |     |    |    |          |      |
|---------------------------------------|--|---------------|----|----------|--------------------------|-----|-----|----|----|----------|------|
| COLORADO SPRINGS UTILITIES            |  | SCALE         | 12 | 12/17/21 | ISSUE FOR CONSTRUCTION   | DP  | CG  | 15 | 16 | REVISION | DATE |
| SUBSTATION & TRANSMISSION ENGINEERING |  | NOTED         | 11 | 4/1/20   | RECORD PRINT             | LLC | JMB | 14 |    |          |      |
| WILLIAMS CREEK SUBSTATION SECTIONS    |  | ENGR: JMB     | 10 | 5/17/19  | RELEASE FOR CONSTRUCTION | WB  | JMB | 13 |    |          |      |
| ADD                                   |  | DATE: 10/2/18 | 9  |          |                          |     |     |    |    |          |      |
|                                       |  | DRAWN BY: TJW | NO |          |                          |     |     |    |    | BY       | CK   |
|                                       |  | CHK'D: JMB    | NO |          |                          |     |     |    |    | NO       |      |

FOR INFORMATIONAL PURPOSES ONLY

M:\DESIGN\09211008\00\WILLIAMS CREEK SUBSTATION\MECHANICAL DRAWINGS\WCM302.DWG: DARRA D. PATTERSON, 20 December 2021 10:44:29 AM

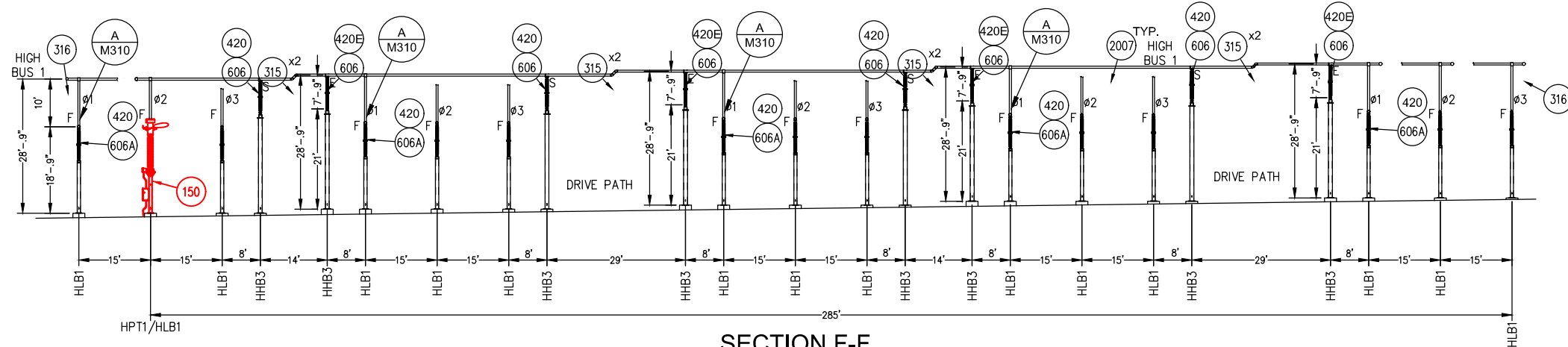


SECTION C-C

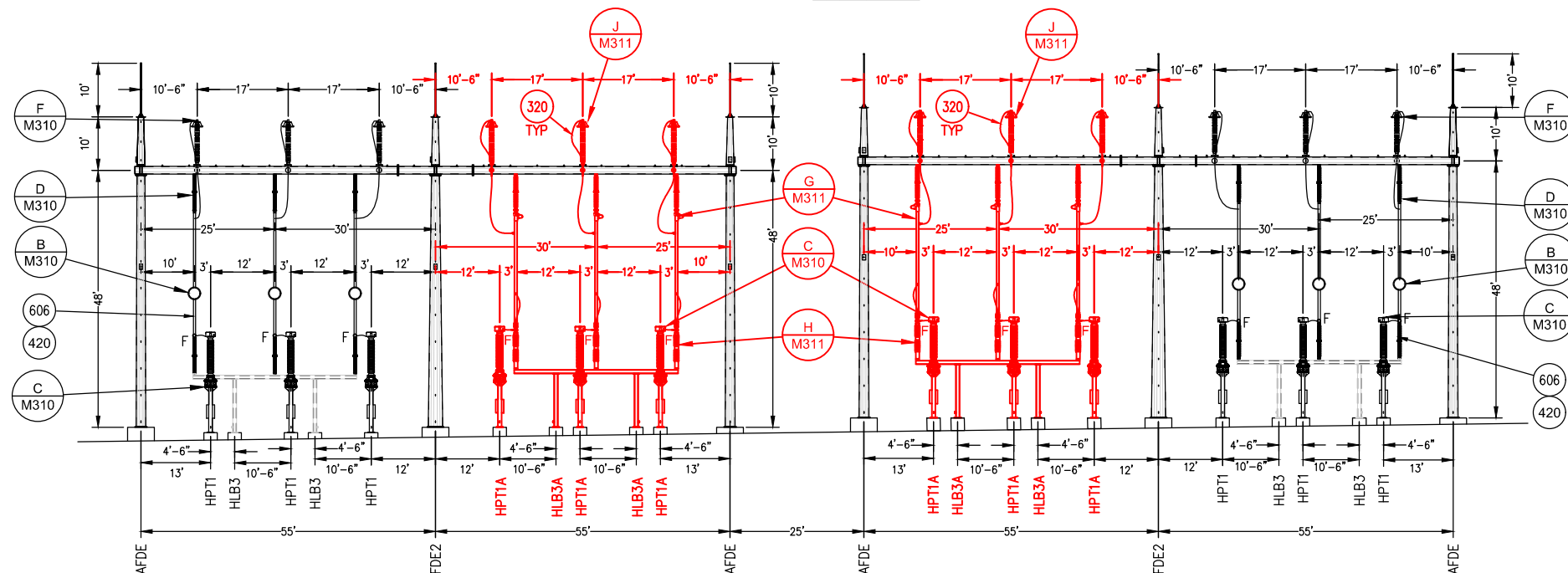


SECTION D-D

SECTION E-E  
(MOVED TO DRAWING WCM303)

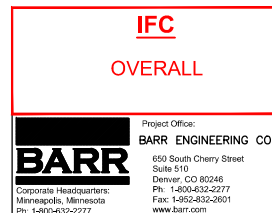


SECTION F-F



SECTION G-G

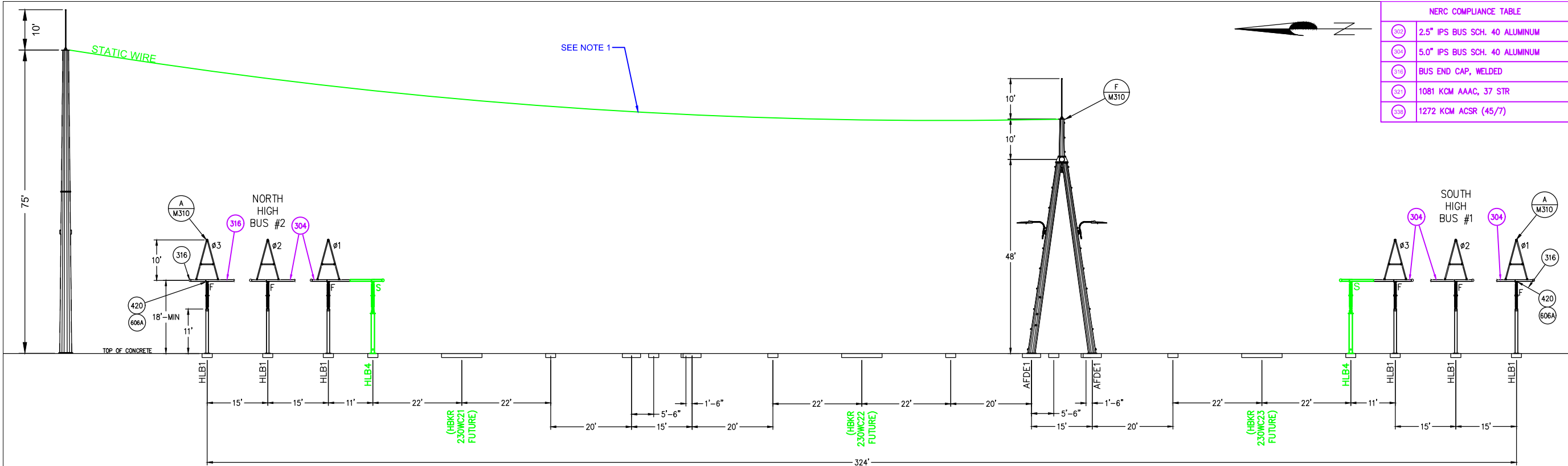
| NERC COMPLIANCE TABLE |                               |
|-----------------------|-------------------------------|
| 304                   | 5.0" IPS BUS SCH. 40 ALUMINUM |
| 321                   | 1081 KCM AAAC, 37 STR         |
| 338                   | 1272.0 KCM ACSR, (45/7)       |



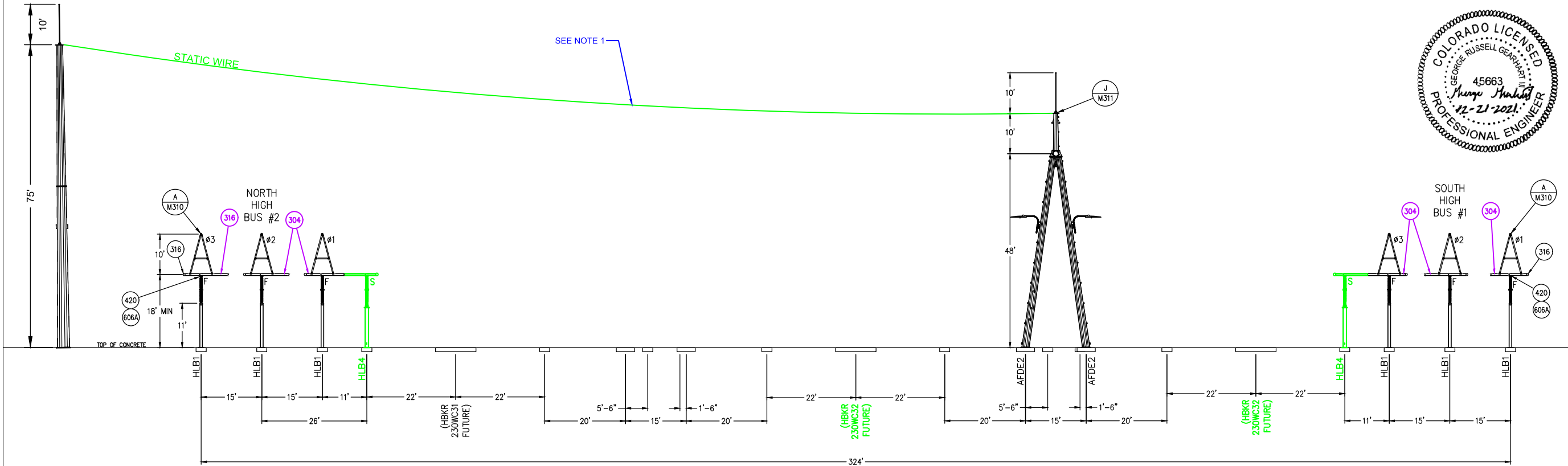
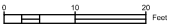
| SCALE                      |  | NOTED                                 |  | REVISION                  |  | DATE                     |  | BY     |  | CK     |  |
|----------------------------|--|---------------------------------------|--|---------------------------|--|--------------------------|--|--------|--|--------|--|
| 12                         |  | 11                                    |  | 12/17/21                  |  | DP                       |  | CG     |  | 15     |  |
| 10                         |  | 10                                    |  | 4/1/20                    |  | RECORD PRINT             |  | LLCJMB |  | 14     |  |
| 9                          |  | 9                                     |  | 7/24/19                   |  | UPDATE FOR BUS EXTENSION |  | WB     |  | JMB    |  |
| NO                         |  | NO                                    |  | DATE                      |  | REVISION                 |  | BY     |  | CK     |  |
| JMB                        |  | JMB                                   |  | DATE                      |  | REVISION                 |  | BY     |  | CK     |  |
| CH'KD:                     |  | JMB                                   |  | DATE                      |  | REVISION                 |  | BY     |  | CK     |  |
| COLORADO SPRINGS UTILITIES |  | SUBSTATION & TRANSMISSION ENGINEERING |  | WILLIAMS CREEK SUBSTATION |  | SECTIONS                 |  | ADD    |  | WCM302 |  |

FOR INFORMATIONAL PURPOSES ONLY

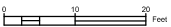




SECTION E-E



SECTION H-H



NOTE:  
1. RELOCATE EXISTING STATIC WIRE TO NEW A-FRAME.

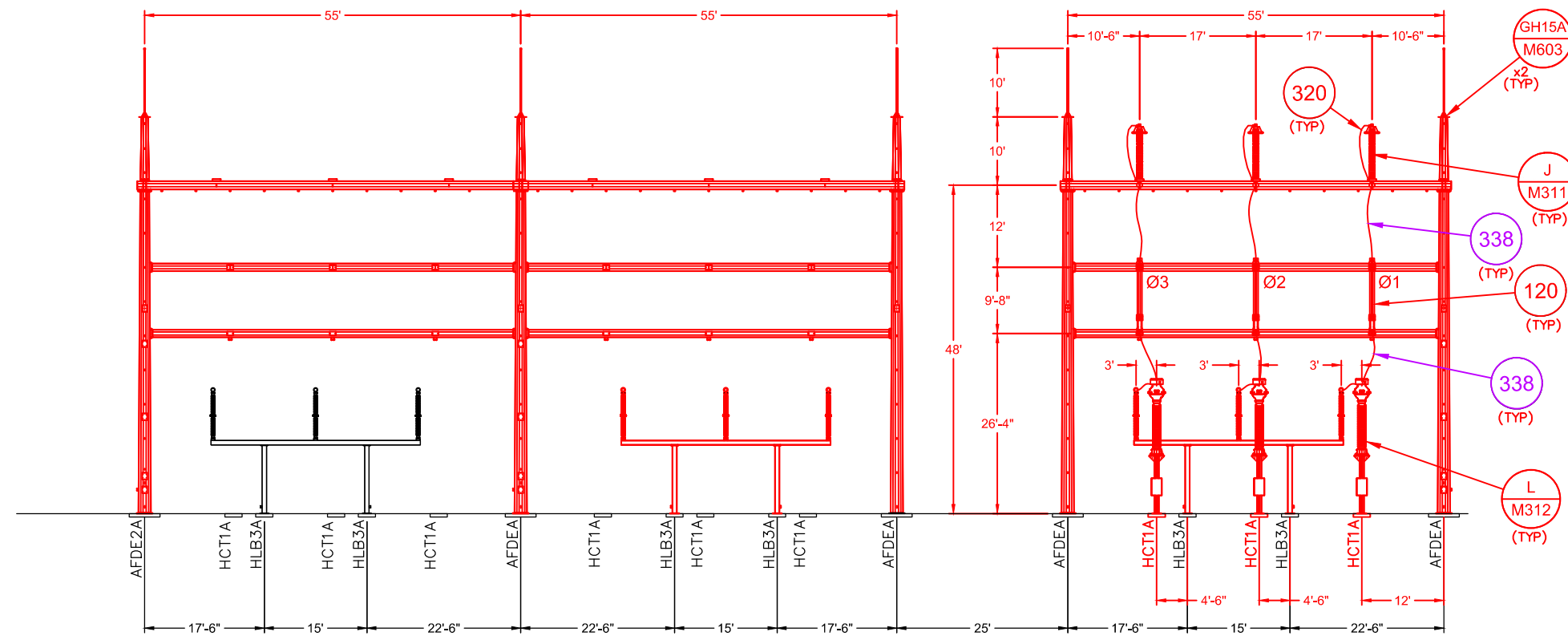
| NERC COMPLIANCE TABLE |                               |
|-----------------------|-------------------------------|
| 302                   | 2.5" IPS BUS SCH. 40 ALUMINUM |
| 304                   | 5.0" IPS BUS SCH. 40 ALUMINUM |
| 316                   | BUS END CAP, WELDED           |
| 321                   | 1081 KCM AAC, 37 STR          |
| 338                   | 1272 KCM ACSR (45/7)          |



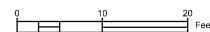
|        |   |  |    |          |                        |    |    |    |      |          |    |    |
|--------|---|--|----|----------|------------------------|----|----|----|------|----------|----|----|
| WCM303 | COLORADO SPRINGS UTILITIES<br><br>SUBSTATION & TRANSMISSION ENGINEERING | SCALE<br>NOTED   | 4  |          |                        |    | 8  |    |      |          |    |    |
|        |   |  | 3  |          |                        |    | 7  |    |      |          |    |    |
|        |   |  | 2  |          |                        |    | 6  |    |      |          |    |    |
|        |   |  | 1  | 12/17/21 | ISSUE FOR CONSTRUCTION | DP | CG | 5  |      |          |    |    |
| REMOVE | WILLIAMS CREEK SUBSTATION<br>SECTION E-E and SECTION K-K                | ENGR: BARR/CG<br>DATE: 6/21<br>DRAWN BY: DP<br>CH'KD: RJ | NO | DATE     | REVISION               | BY | CK | NO | DATE | REVISION | BY | CK |







SECTION K-K  
(LOOKING SOUTH)



IFC

OVERALL

**BARR**

Corporate Headquarters:  
Minneapolis, Minnesota  
Ph: 1-800-632-2277

Project Office:  
**BARR ENGINEERING CO.**  
650 South Cherry Street  
Suite 510  
Denver, CO 80248  
Ph: 1-800-632-2277  
Fax: 1-952-832-2601  
[www.barr.com](http://www.barr.com)

WCM304

FOR INFORMATIONAL PURPOSES ONLY

D

C

B

A

D

C

B

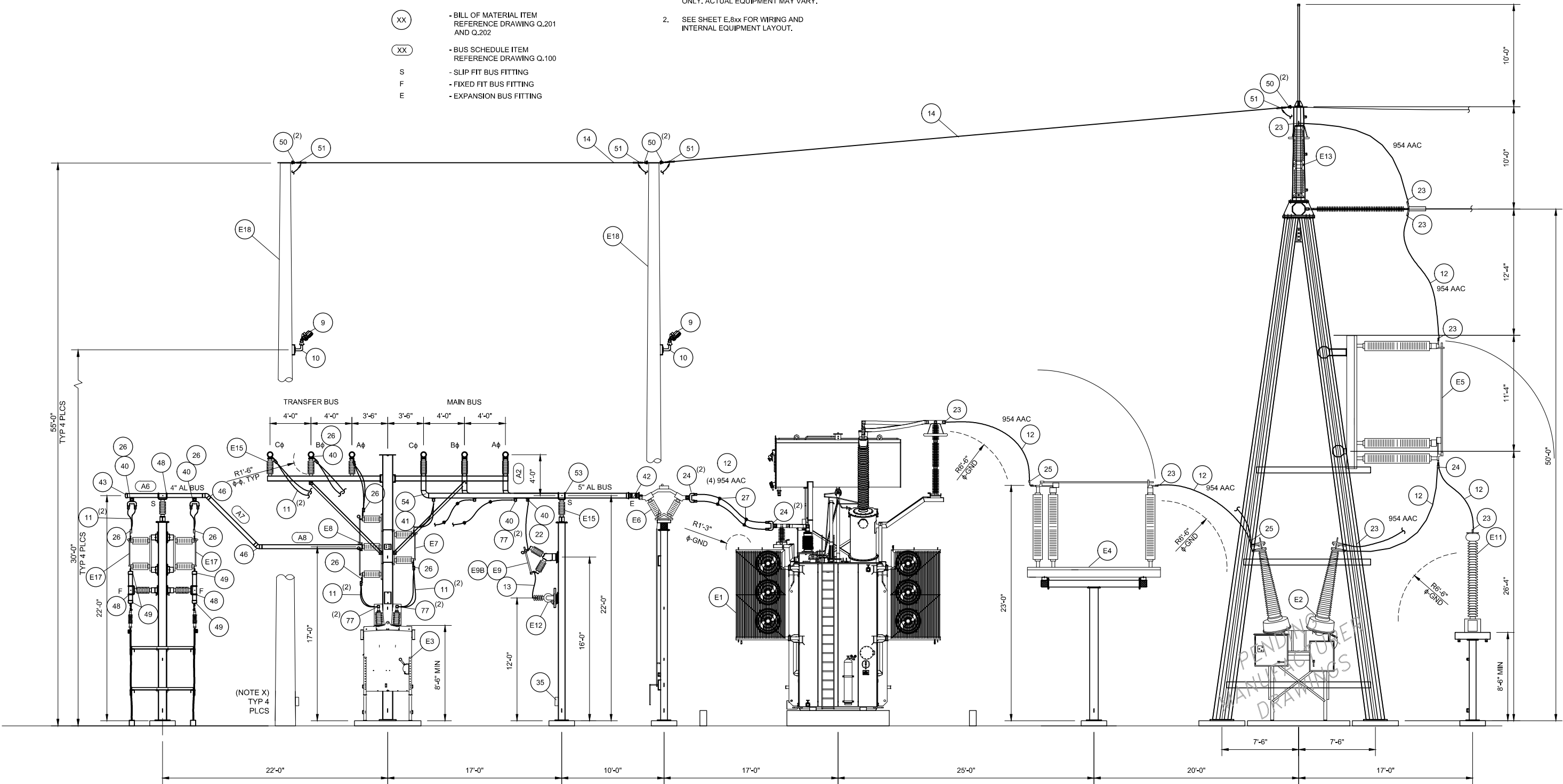
A

LEGEND

- NEW CONSTRUCTION
- XX - BILL OF MATERIAL ITEM  
REFERENCE DRAWING Q.201  
AND Q.202
- XX - BUS SCHEDULE ITEM  
REFERENCE DRAWING Q.100
- S - SLIP FIT BUS FITTING
- F - FIXED FIT BUS FITTING
- E - EXPANSION BUS FITTING

NOTES

- EQUIPMENT SHOWN FOR REFERENCE  
ONLY. ACTUAL EQUIPMENT MAY VARY.
- SEE SHEET E.8xx FOR WIRING AND  
INTERNAL EQUIPMENT LAYOUT.



SECTION B





MESA ASSOCIATES, INC.

ENGINEERS AND CONSULTANTS

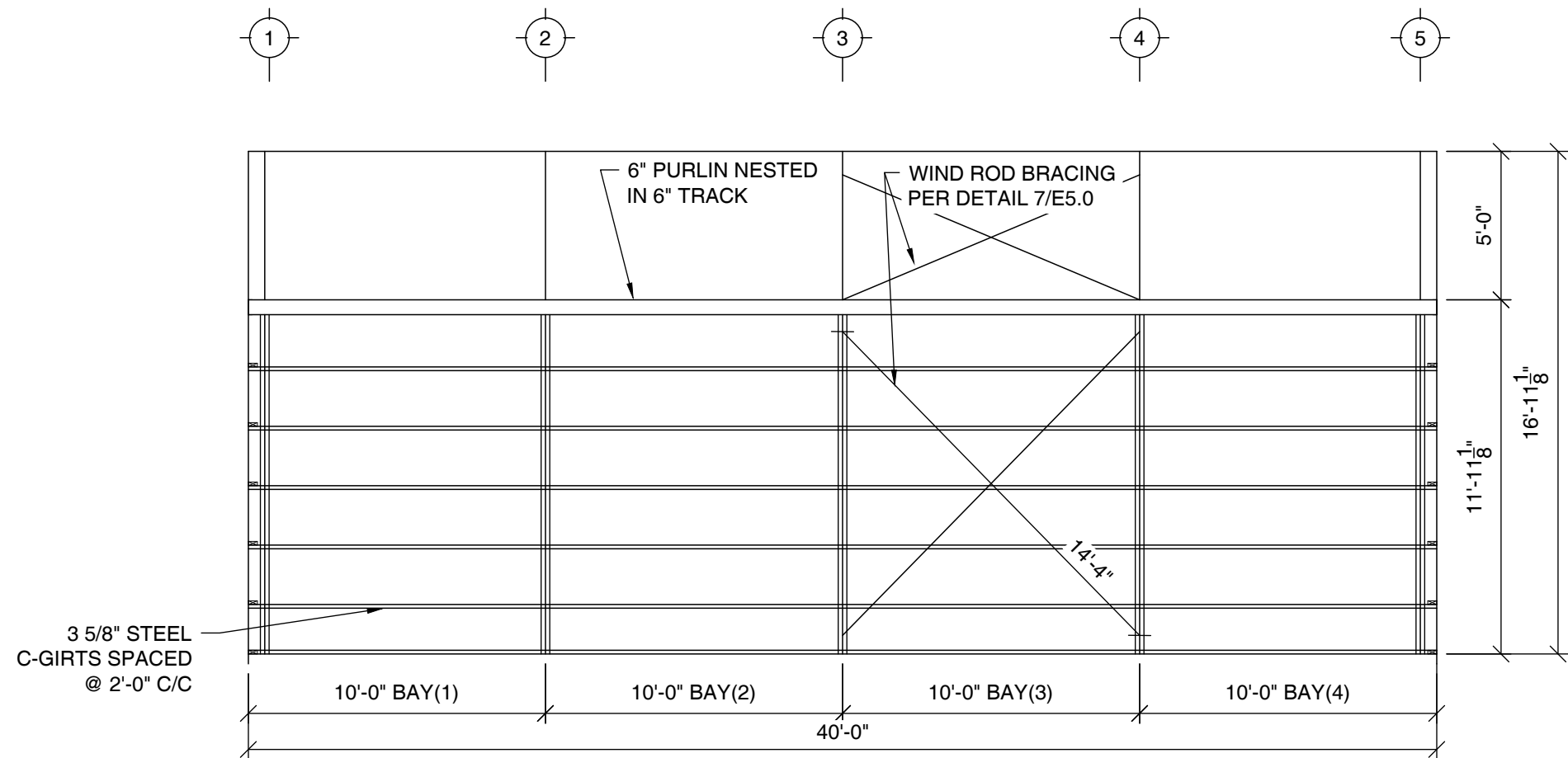
10604 MURDOCK DRIVE KNOXVILLE, TN 37932  
(865) 671-5400

|     |             |          |       |       |      |
|-----|-------------|----------|-------|-------|------|
| 3   |             |          |       |       |      |
| C   | 90% REVIEW  | 12/03/21 | EBT   | BVB   | PSF  |
| B   | 60% REVIEW  | 07/01/21 | BLW   | BVB   | PSF  |
| A   | 30% REVIEW  | 02/11/21 | BLW   | BVB   | PSF  |
| REV | DESCRIPTION | DATE     | DRAWN | CHECK | APPR |

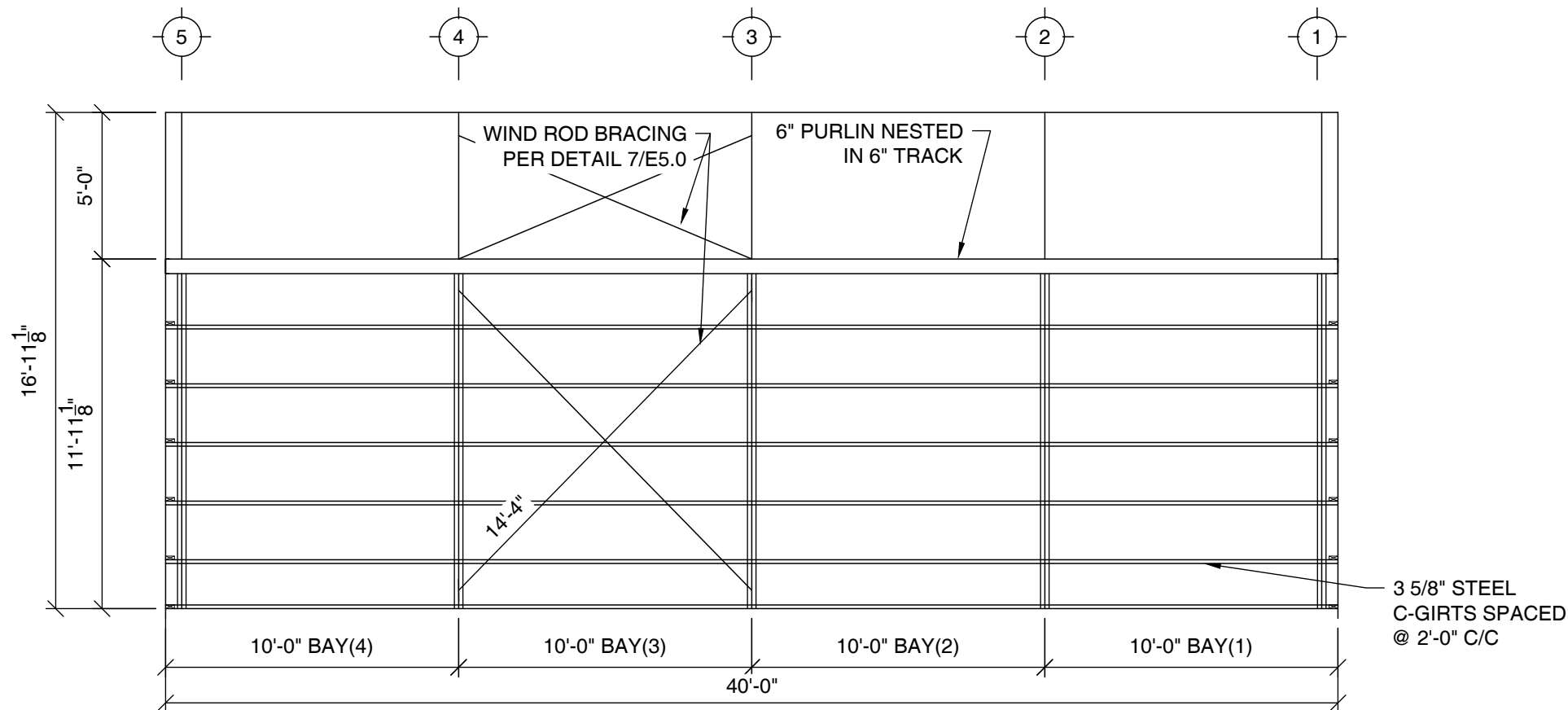


1710 29th St. Suite 1068  
Boulder, CO 80301  
www.juwiamericas.com

|                              |                                |                 |          |  |  |
|------------------------------|--------------------------------|-----------------|----------|--|--|
| PIKE SUBSTATION<br>SECTION B |                                |                 |          |  |  |
| SIZE<br>B                    | MESA STATE REG.<br>20061287627 | DWG NO.<br>Q102 | REV<br>C |  |  |
| SCALE<br>AS SHOWN            | PROJECT NO.<br>20716001        | SHEET<br>1      | OF<br>1  |  |  |



1 ELEVATION AT RIGHT SIDEWALL  
SCALE: 3/16" = 1'-0"



2 ELEVATION AT LEFT SIDEWALL  
SCALE: 3/16" = 1'-0"

NOTES, WALL ELEVATIONS:

- COLUMN CHORD BRACING IS VITAL TO THE STABILITY OF THE STEEL FRAMES AND SHALL NOT BE REMOVED, RELOCATED, OR MODIFIED IN ANY WAY. ERECTOR SHALL CONFIRM THAT BRACING IS INSTALLED PER THESE DRAWINGS BEFORE TURNING THE BUILDING OVER TO THE OWNER. BRACING TO BE PRESENT ON EVERY TRUSS WALL DECKING AND GIRTS ARE VITAL TO THE STABILITY OF THE STEEL BUILDING. BUILDING IS NOT STABLE UNTIL ALL DECKING IS INSTALLED. SEE ATTACHMENT PATTERN ON E5.1
- 



Worldwide Steel Buildings  
10606 State Route YY  
Peculiar, MO 64078  
(800)825-0316  
www.worldwidesteelbuildings.com

Juwi Solar  
(Pike Project)

Founatin, Colorado 81102  
WWSB Project #72-26-E



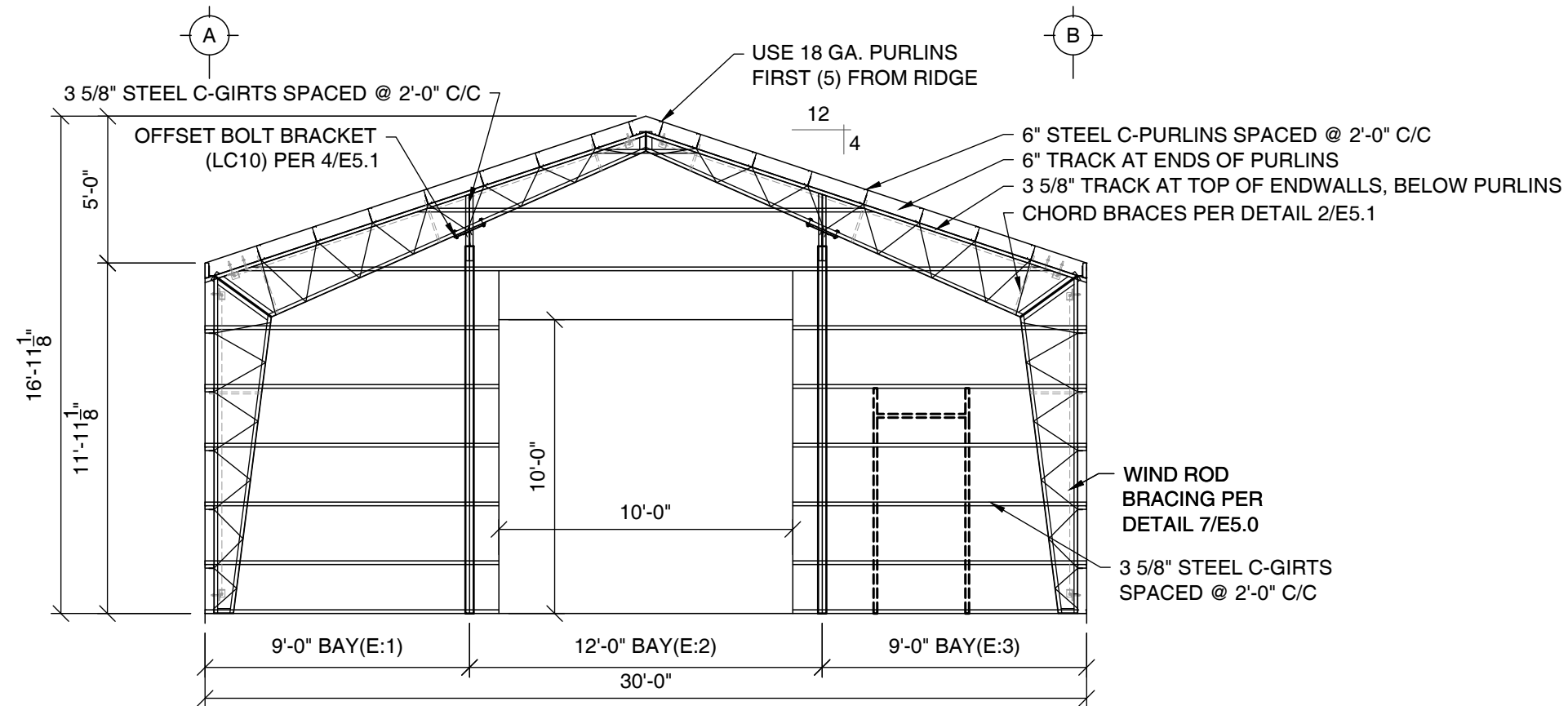
Complete Structural Consulting, Inc.  
CA 29951

|           |           |
|-----------|-----------|
| DRAWN     | JKH       |
| CHECKED   | DML       |
| DATE      | 9/20/2021 |
| REVISIONS |           |
| Rev.01:   | 9/28/2021 |

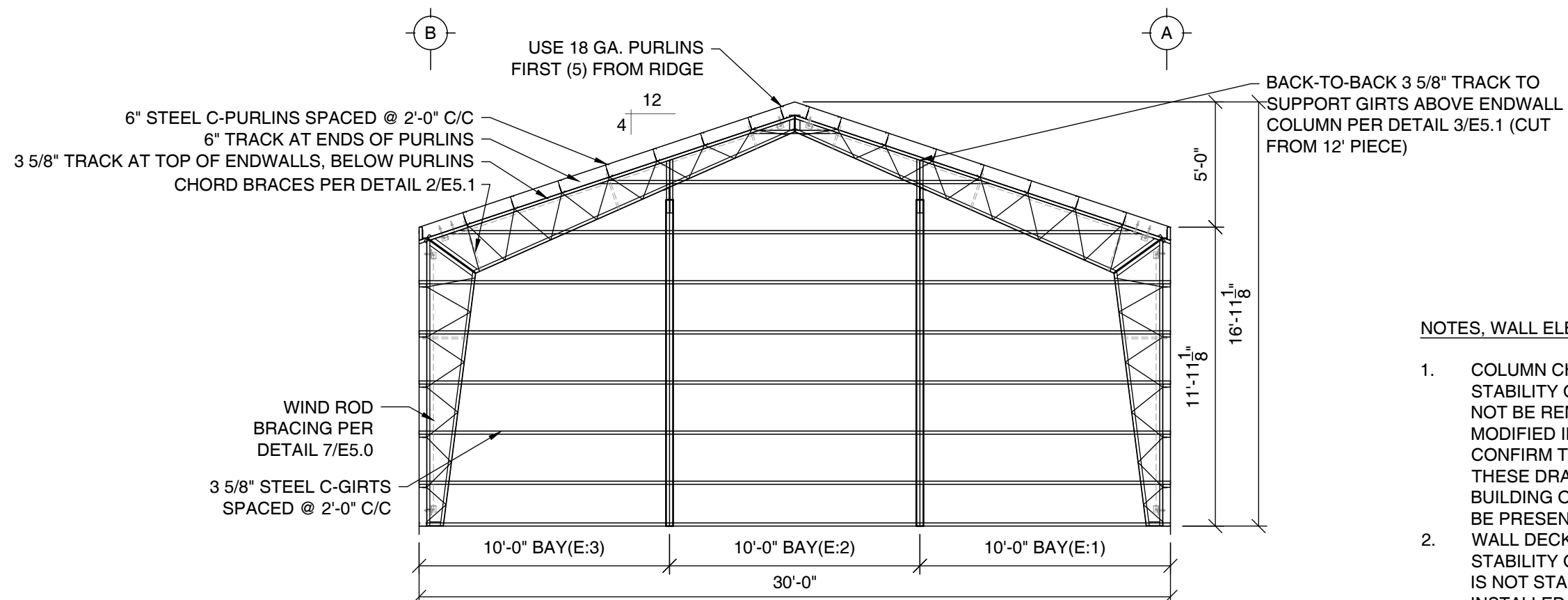
JOB NUMBER 21.699

S H E E T

E3.0



① ELEVATION AT FRONT ENDWALL  
SCALE: 3/16" = 1'-0"



② ELEVATION AT REAR ENDWALL  
SCALE: 3/16" = 1'-0"

NOTES, WALL ELEVATIONS:

- COLUMN CHORD BRACING IS VITAL TO THE STABILITY OF THE STEEL FRAMES AND SHALL NOT BE REMOVED, RELOCATED, OR MODIFIED IN ANY WAY. ERECTOR SHALL CONFIRM THAT BRACING IS INSTALLED PER THESE DRAWINGS BEFORE TURNING THE BUILDING OVER TO THE OWNER. BRACING TO BE PRESENT ON EVERY TRUSS
- WALL DECKING AND GIRTS ARE VITAL TO THE STABILITY OF THE STEEL BUILDING. BUILDING IS NOT STABLE UNTIL ALL DECKING IS INSTALLED. SEE ATTACHMENT PATTERN ON E5.1



Worldwide Steel Buildings  
10606 State Route YY  
Peculiar, MO 64078  
(800)825-0316  
www.worldwidesteelbuildings.com

Juwi Solar  
(Pike Project)

Fountain, Colorado 81102  
WWSB Project #72-26-E



Complete Structural Consulting, Inc.  
CA 29951

|           |           |
|-----------|-----------|
| DRAWN     | JKH       |
| CHECKED   | DML       |
| DATE      | 9/20/2021 |
| REVISIONS |           |
| Rev.01:   | 9/28/2021 |

JOB NUMBER 21.699

S H E E T

E4.0