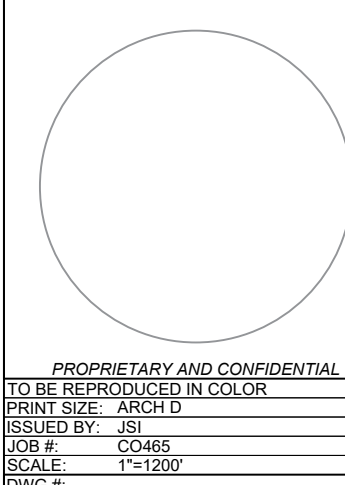


GENERAL NOTES	
1	COORDINATES ARE IN NAD83 COLORADO STATE PLANE, CENTRAL ZONE, US FT.
2	PROPERTY DESCRIPTION: 1162 ACRES INSIDE PROJECT FENCE, SECTIONS 6, 7, 18, 30 AND 31 T16S, R64W, AND SECTIONS 1, 11-14, 23-26, 35 AND 36 T16S, R65W
3	NORTH ARROW CORRESPONDS TO TRUE NORTH AT SITE, NOT SURVEY NORTH

LEGEND	
	CSU PARCEL BOUNDARY
	PROJECT FENCE
	SITE ACCESS ROAD (TYP 16' WIDE)
	EXISTING CSU ROAD
	GENERAL LAYDOWN AREA
	TRACKER ARRAY OUTLINE
	EXISTING OH TRANSMISSION LINE - 115KV
	EXISTING OH TRANSMISSION LINE - 230KV
	EXISTING OH TRANSMISSION LINE - 345 KV
	EXISTING UG FIBER OPTIC LINE
	EXISTING UG WATER LINE
	EXISTING NATURAL GAS LINE
	PROPOSED OH GEN-TIE LINE - 230KV
	POWER STATION
	FEMA FLOOD ZONE
	TRACKING ARRAY BLOCK

CITY OF FOUNTAIN TRANSMISSION CORRIDOR



PROPRIETARY AND CONFIDENTIAL
TO BE REPRODUCED IN COLOR
PRINT SIZE: ARCH D
ISSUED BY: JBL
DATE: 02-06-2025
SCALE: 1"=1200'
DWG #

G101

DWG TITLE:
GENERAL SITE PLAN -
SITE OVERVIEW

REVISION NOTES	
REV	DESCRIPTION
A	ISSUED FOR PERMITTING
B	ISSUED FOR PERMITTING
C	ISSUED FOR PERMITTING
D	ISSUED FOR PERMITTING
E	ISSUED FOR PERMITTING

juwi

juwi Inc.
1710 29th St, Suite 1008
Boulder, CO 80301
www.juwiamericas.com

PIKE SOLAR
219.46 MW PV, 25 MW BESS, 175.00 MW POI
EL PASO COUNTY, CO

DRAWN BY: RMC
LATEST REV: E

Sophie Kiepe

From: Sophie Kiepe
Sent: Tuesday, February 1, 2022 2:53 PM
To: Jessica Davis
Subject: RE: Follow up on 7/21 Lower Williams Creek - Fountain Transmission Line Call

Hi Jessica,

I hope your week is going well. I'm writing regarding the preparation of the revocable license for the City of Fountain's Transmission corridor per the email correspondence below. I would like to request a copy of the license for the purposes of our upcoming submittal to the County Planning Department for the Pike Solar site development plan application.

No worries if the license is not yet finalized at this time; The County has noted that we can submit executed versions of any associated easements or revocable licenses at the point of our final submittal, nearer to the project approval. We expect our final submittal to occur between March and April, at which point we'd need any such licenses in final form.

Thank you,

Sophie Kiepe
Project Planner

juwi Inc. • 1710 29th Street, Suite 1068 • Boulder, Colorado 80301 • USA
+1. 720.245.2922 • fax. +1.303.442.1981

skiepe@juwiamericas.com • www.juwiamericas.com

juwi • Energy is here

Pronouns: she/her/hers ([what's this?](#))

This communication may contain privileged or confidential information. If you are not the intended recipient(s), you are hereby notified that you have received this message in error and that any review, dissemination, distribution or copying of this message is strictly prohibited. Any views or opinions presented are solely those of the author and do not necessarily represent those of juwi Inc. or its affiliates. If you have received this communication in error, please notify us immediately by email, and delete the original and any copies of the message. We do not waive confidentiality if you have received this communication in error.

From: Jessica Davis <jedavis@csu.org>
Sent: Wednesday, October 13, 2021 11:11 AM
To: Brian Vickers <bvickers@juwiamericas.com>; Tracy R. Tillman <TTillman@fountaincolorado.org>
Cc: David Longrie <dlongrie@csu.org>; Bryan Lohoff <blohoff@juwiamericas.com>; Sophie Kiepe <skiepe@juwiamericas.com>
Subject: RE: Follow up on 7/21 Lower Williams Creek - Fountain Transmission Line Call

Tracy,

Good morning. Yes, you will be working with me on the revocable license for what you need. We need to have a legal description of the area you wish to occupy. Can you provide that and we'll start drafting the revocable license?

I also think we need to meet with the team on your planned connection into the Williams Creek Substation – overhead or underground. We were looking at our future connections and think we might need that line undergrounded out of Williams Creek and to your first pole then can go above ground after that.

Let me know if your team would like to set up a meeting to discuss and your timing on when this needs to be completed by.

Thank you,

Jessica Davis | Land Resource Manager
[Colorado Springs Utilities](#) | Land Resource Management
121 South Tejon Street, Fifth Floor | MC: 950 | Colorado Springs, CO 80903
O 719-668-7581 | C 719-640-3103 |

From: Brian Vickers <bvickers@juwiamerica.com>
Sent: Wednesday, October 13, 2021 9:25 AM
To: Tracy R. Tillman <TTillman@fountaincolorado.org>; Jessica Davis <jedavis@csu.org>
Cc: David Longrie <dlongrie@csu.org>; Bryan Lohoff <blohoff@juwiamerica.com>; Sophie Kiepe <skiepe@juwiamerica.com>
Subject: RE: Follow up on 7/21 Lower Williams Creek - Fountain Transmission Line Call

[External Email - Be careful! DO NOT open attachments or click links from unknown senders or unexpected email.]

Hello Tracy,

Because this is Colorado Springs (Colorado Springs Utilities (CSU)) property, my understanding is that you will need to coordinate with [@Jessica Davis](#) in the CSU real estate department regarding easement discussions.

Since my previous email, Warren Seese has retired from CSU. David Longrie is serving as acting CSU project manager for the Pike Solar Project and is monitoring related Williams Creek substation interconnection discussions with City of Fountain. I have also copied juwi's project development team members, Bryan Lohoff and Sophie Kiepe to keep them in the loop.

Brian Vickers, PMP
Project Manager

juwi Inc. • 1710 29th Street, Suite 1068 • Boulder, Colorado 80301 • USA
+1.720.838.2302 • fax. +1.303.442.1981
bvickers@juwiamerica.com • www.juwiamerica.com
juwi • Energy is here

Pronouns: He/Him/His ([what's this?](#))

This communication may contain privileged or confidential information. If you are not the intended recipient(s), you are hereby notified that you have received this message in error and that any review, dissemination, distribution or copying of this message is strictly prohibited. Any views or opinions presented are solely those of the author and do not necessarily represent those of juwi Inc. or its affiliates. If you have received this communication in error, please notify us immediately by email, and delete the original and any copies of the message. We do not waive confidentiality if you have received this communication in error.

From: Tracy R. Tillman <TTillman@fountaincolorado.org>
Sent: Wednesday, October 13, 2021 9:16 AM
To: Brian Vickers <bvickers@juwiamerica.com>
Subject: RE: Follow up on 7/21 Lower Williams Creek - Fountain Transmission Line Call

Brian
We would like to proceed with the proposed easement what's our next step.

Let me know

Tracy Tillman

Electric Distribution System Designer

City of Fountain | 700 South Charter Oak Ranch Road, Fountain, CO 80817

ttillman@fountaincolorado.org

office (719) 322-2092 | mobile (719) 213-0427 | fax (719) 391-0463



[Facebook](#) | [Twitter](#) | [YouTube](#)

To Strengthen & Support Our Community

From: Brian Vickers <bvickers@juwiamerica.com>

Sent: Wednesday, August 4, 2021 8:18 AM

To: Carl Christian <carl@fountaincolorado.org>; Tracy R. Tillman <TTillman@fountaincolorado.org>

Cc: Jessica Davis <jedavis@csu.org>; Warren Seese (wseese@csu.org) <wseese@csu.org>; Bryan Lohoff <blohoff@juwiamerica.com>; Sophie Kiepe <skiepe@juwiamerica.com>

Subject: RE: Follow up on 7/21 Lower Williams Creek - Fountain Transmission Line Call

Caution:

This email originated from outside the City of Fountain network. Do not click links or open attachments unless you recognize the sender and know the content is safe. Never provide your network username and password requested via email. Please call the IT Help Desk at 322-2085 if you are unsure of the integrity of this message.

- Helpdesk

Hello Carl and Tracy,

CSU management and Real Estate have given the thumbs up on the proposed City of Fountain transmission line route shown in the attached. Of course, the caveat is that City of Fountain would need to make sure to stay within the requirements of all interested parties and provided there is enough space for their easement and transmission line in the proposed new route.

The proposed route is shown in a light turquoise color and runs north from the Williams Creek Substation then turns 90 deg to the west and then 90 deg to the north to continue to the west of the Pike Solar arrays. The two crossings of planned Pike Solar infrastructure include:

1. A planned overhead gen-tie line between the Pike project substation and the Williams Creek Substation. Because the City of Fountain is planning to install a 115 kV transformer near the Williams Creek substation, it is anticipated that the City of Fountain 115 kV line would pass underneath the planned overhead gen-tie line.
2. A planned underground Mountain View Electric Association (MVEA) station service line that will run from the south to the north to provide station service to the Pike Solar project substation.

The City of Fountain will likely want to refine the northern extent of the proposed route to align with the City of Fountain's planned substation west of the Fountain landfill.

Brian Vickers, PMP

Project Manager

juwi Inc. • 1710 29th Street, Suite 1068 • Boulder, Colorado 80301 • USA

+1.720.838.2302 • fax. +1.303.442.1981

bvickers@juwiamerica.com • www.juwiamerica.com

juwi • Energy is here

Pronouns: He/Him/His ([what's this?](#))

This communication may contain privileged or confidential information. If you are not the intended recipient(s), you are hereby notified that you have received this message in error and that any review, dissemination, distribution or copying of this message is strictly prohibited. Any views or opinions presented are solely those of the author and do not necessarily represent those of juwi Inc. or its affiliates. If you have received this communication in error, please notify us immediately by email, and delete the original and any copies of the message. We do not waive confidentiality if you have received this communication in error.

From: Brian Vickers

Sent: Friday, July 30, 2021 3:39 PM

To: Carl Christian <carl@fountaincolorado.org>; Tracy R. Tillman <TTillman@fountaincolorado.org>

Cc: Jessica Davis <jedavis@csu.org>; Warren Seese (wseese@csu.org) <wseese@csu.org>; Bryan Lohoff

<blohoff@juwiamerica.com>; Sophie Kiepe <skiepe@juwiamerica.com>

Subject: RE: Follow up on 7/21 Lower Williams Creek - Fountain Transmission Line Call

Hello Carl and Tracy,

We have shared a potential route with CSU to solicit their feedback. After we have had a chance to get CSU's input, we will ready to share a route with City of Fountain.

Brian Vickers, PMP

Project Manager

juwi Inc. • 1710 29th Street, Suite 1068 • Boulder, Colorado 80301 • USA

+1.720.838.2302 • fax. +1.303.442.1981

bvickers@juwiamerica.com • www.juwiamerica.com

juwi • Energy is here

Pronouns: He/Him/His ([what's this?](#))

This communication may contain privileged or confidential information. If you are not the intended recipient(s), you are hereby notified that you have received this message in error and that any review, dissemination, distribution or copying of this message is strictly prohibited. Any views or opinions presented are solely those of the author and do not necessarily represent those of juwi Inc. or its affiliates. If you have received this communication in error, please notify us immediately by email, and delete the original and any copies of the message. We do not waive confidentiality if you have received this communication in error.

From: Carl Christian <carl@fountaincolorado.org>

Sent: Wednesday, July 21, 2021 12:00 PM

To: Brian Vickers <bvickers@juwiamerica.com>; Tracy R. Tillman <TTillman@fountaincolorado.org>

Cc: Jessica Davis <jedavis@csu.org>; Warren Seese (wseese@csu.org) <wseese@csu.org>; Bryan Lohoff

<blohoff@juwiamerica.com>; Sophie Kiepe <skiepe@juwiamerica.com>

Subject: RE: Follow up on 7/21 Lower Williams Creek - Fountain Transmission Line Call

Brian, great talking with you. I appreciate the turn around on this request..

Respectfully,

Carl Christian

Deputy Utility Director

City of Fountain | 700 S. Charter Oak Ranch Rd. Fountain, CO 80817

www.fountaincolorado.org

office (719) 322-2092 | fax (719) 391-0463



[Facebook](#) | [Twitter](#) | [YouTube](#)

To Strengthen & Support Our Community

From: Brian Vickers [<mailto:bvickers@juwiamerica.com>]

Sent: Wednesday, July 21, 2021 11:41 AM

To: Carl Christian <carl@fountaincolorado.org>; Tracy R. Tillman <TTillman@fountaincolorado.org>

Cc: Jessica Davis <jedavis@csu.org>; Warren Seese (wseese@csu.org) <wseese@csu.org>; Bryan Lohoff <blohoff@juwiamerica.com>; Sophie Kiepe <skiepe@juwiamerica.com>

Subject: Follow up on 7/21 Lower Williams Creek - Fountain Transmission Line Call

Caution:

This email originated from outside the City of Fountain network. Do not click links or open attachments unless you recognize the sender and know the content is safe. Never provide your network username and password requested via email. Please call the IT Help Desk at 322-2085 if you are unsure of the integrity of this message.

- Helpdesk

Hello Carl and Tracy,

I appreciated meeting you both virtually this morning. I spoke with the Pike Solar project engineer and confirmed that we could send a proposed alignment with 70 ft easement for the Fountain Transmission line by Friday, 7/30.

Brian Vickers, PMP

Project Manager

juwi Inc. • 1710 29th Street, Suite 1068 • Boulder, Colorado 80301 • USA
+1.720.838.2302 • fax. +1.303.442.1981

bvickers@juwiamerica.com • www.juwiamerica.com

juwi • Energy is here

Pronouns: He/Him/His ([what's this?](#))

This communication may contain privileged or confidential information. If you are not the intended recipient(s), you are hereby notified that you have received this message in error and that any review, dissemination, distribution or copying of this message is strictly prohibited. Any views or opinions presented are solely those of the author and do not necessarily represent those of juwi Inc. or its affiliates. If you have received this communication in error, please notify us immediately by email, and delete the original and any copies of the message. We do not waive confidentiality if you have received this communication in error.

CONFIDENTIALITY NOTICE - This email transmission, and any documents, files or previous email messages attached to it, may contain information that is legally privileged or otherwise confidential to include customer and business information. If you are not the intended recipient, or an authorized person for the intended recipient, you are hereby notified that any disclosure, copying or distribution of this information, or any action taken in reliance on the information contained within this email, is strictly prohibited. If you have received this email message in error, please notify the sender and then delete the message (and any attachments) from your computer and/or network. Thank you.