



May 25th, 2021

EPC - Planning  
2880 International Circle  
Colorado Springs, CO 80910

SUBJECT: 1041 Admin Determination-Letter of Intent  
Mountain View Electric Association, Inc. (MVEA)  
EPC County File no. TBD

Dear EPC Planning:

Mountain View Electric Association, Inc (MVEA) will be constructing a 12.5 kV underground electrical distribution feeder line running along Stapleton Drive & Curtis Road. The underground installation will be approximately 1.8 miles in length and will begin near the intersection of Stapleton Drive and Hwy 24. The installation will run parallel to Stapleton Dr within the public road ROW and continue south of Judge Orr Rd and will be installed in a platted utility easement on the east side of Curtis Road. The project terminates approximately 2/3 mile south of the Judge Orr Road and Curtis Road intersection.

The utility line is located in sections 33 & 34, 12N, 64W and section 3, 13N 64W of the 6<sup>th</sup> P.M., El Paso County, Colorado. Site maps are attached.

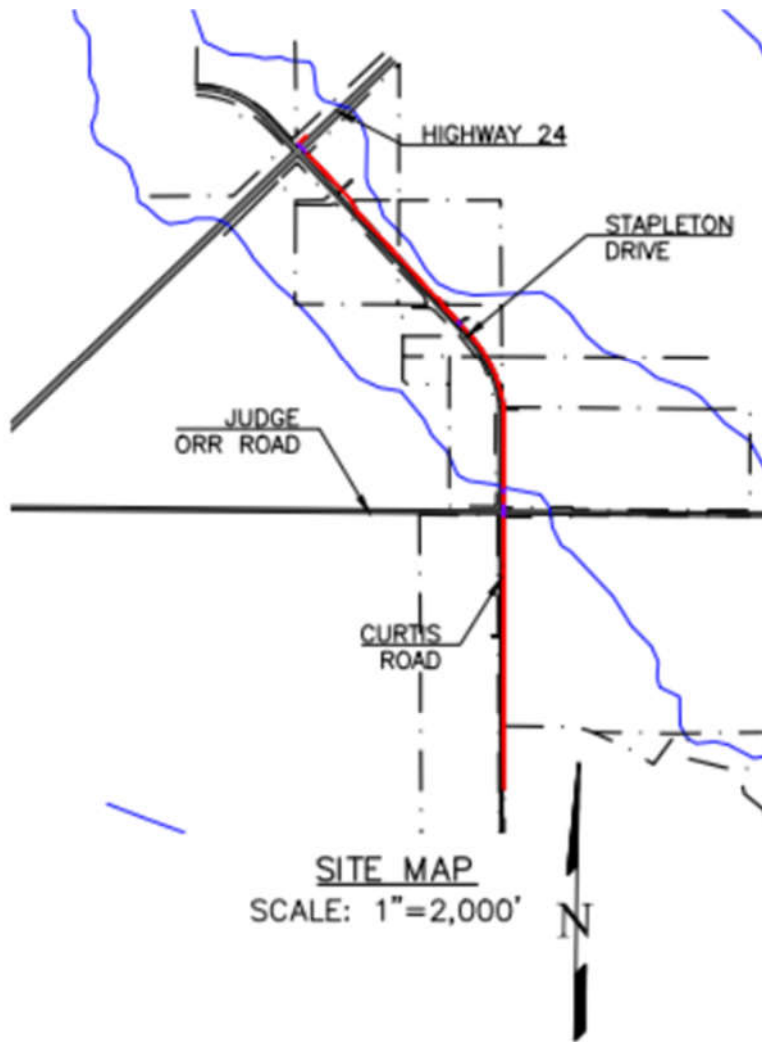
MVEA is requesting an exemption for these projects per section 5.104 (4) of the EPC Land Development Code. 1041 Regulations are not applicable to this project due to the utility installation being a 12.5kv lower-voltage distribution line, not 115 kV or more. This is not construction of a transmission line, nor construction of a major facility of a public utility.

Sincerely,

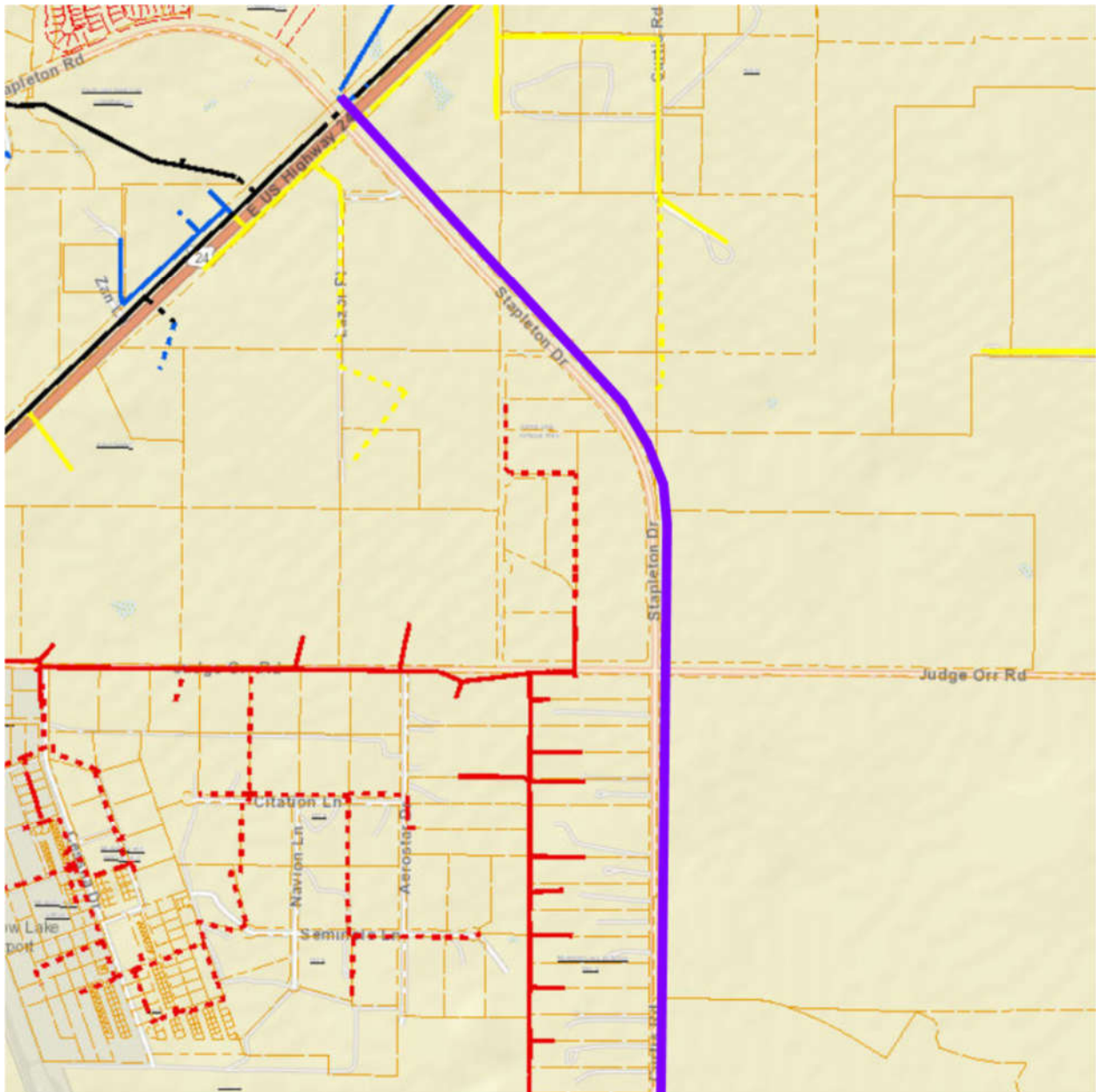
A handwritten signature in black ink, appearing to read "Nicole Rietz".

Nicole Rietz  
Engineering Coordinator I

This Association is an equal opportunity provider and employer.



MVEA Saddlehorn Ranch- Vicinity Map



MVEA Saddlehorn Ranch- MVEA system map (new distribution line shown in purple)