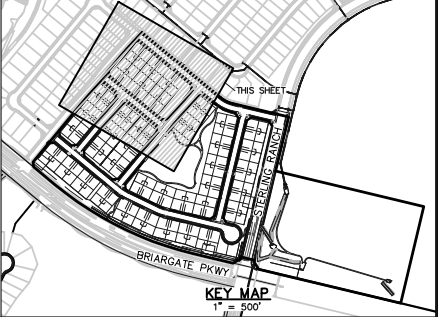
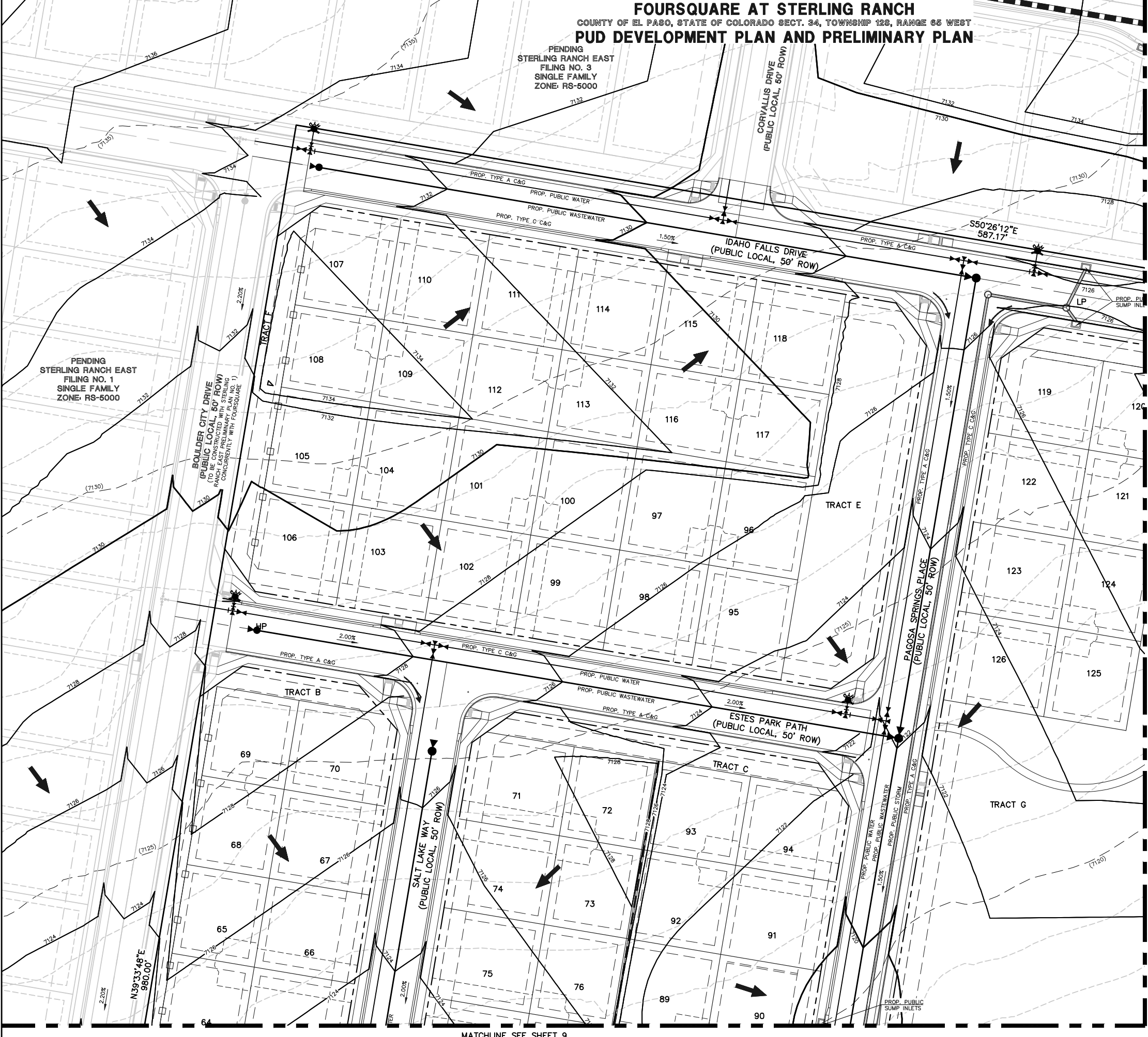
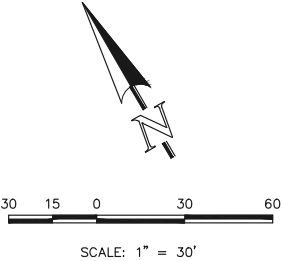


FOURSQUARE AT STERLING RANCH
COUNTY OF EL PASO, STATE OF COLORADO SECT. 34, TOWNSHIP 12S, RANGE 65 WEST
PUD DEVELOPMENT PLAN AND PRELIMINARY PLAN



LEGEND

- 6770 --- EXISTING CONTOUR
- 6770 --- PROPOSED CONTOUR
- BOUNDARY/FILING LINE
- EXISTING FLOW DIRECTION
- PROPOSED FLOW DIRECTION
- PROPOSED INLET
- PROPOSED STORM PIPE
- EXISTING STORM PIPE
- HP PROPOSED HIGH POINT
- LP PROPOSED LOW POINT



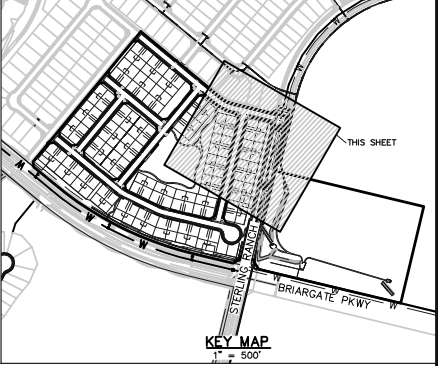
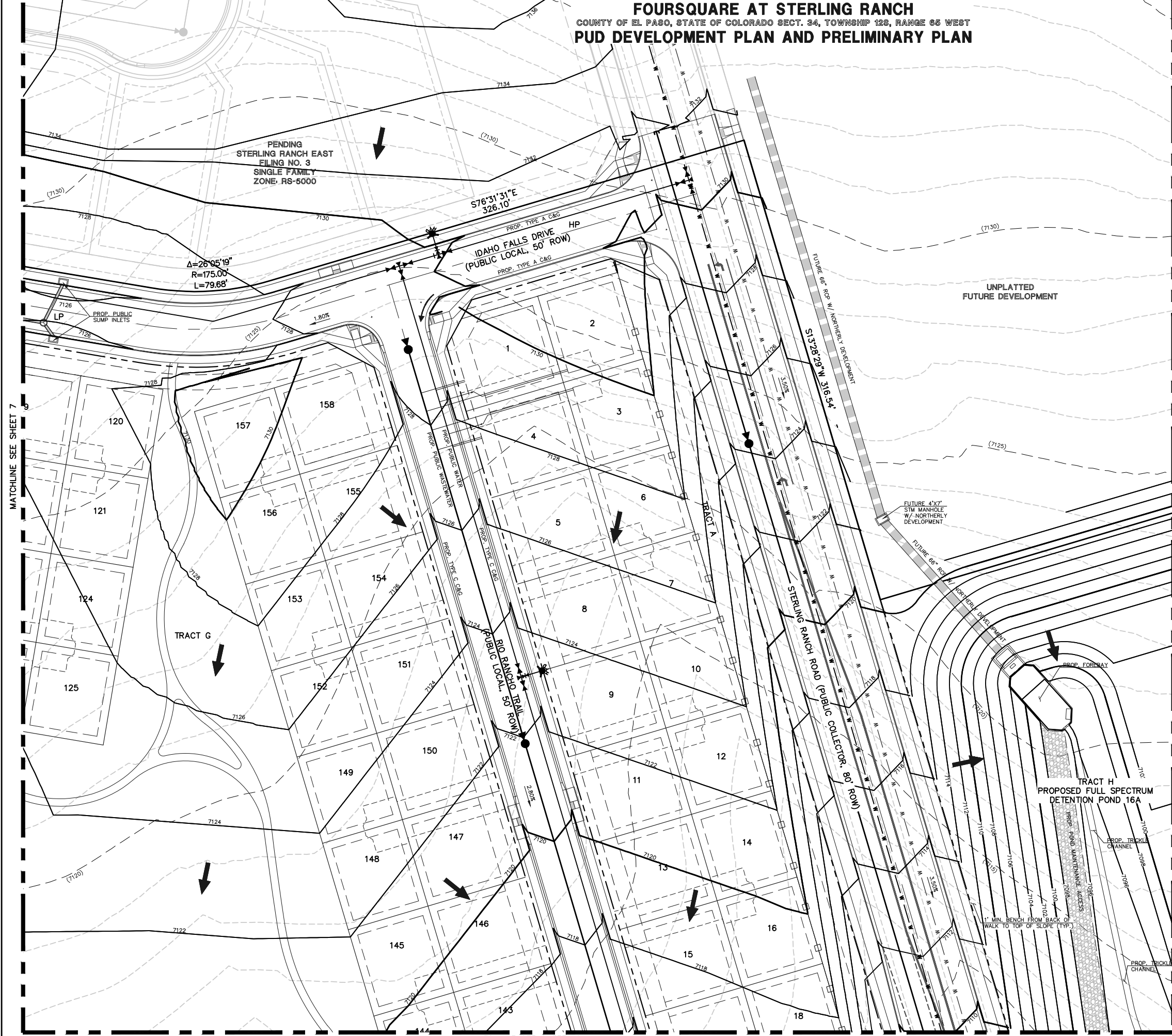
619 N. Cascade Avenue, Suite 200
Colorado Springs, Colorado 80903

(719)785-0790
(719)785-0799 (Fax)

STERLING RANCH EAST
PRELIMINARY PLAN NO. 2
PRELIMINARY GRADING & UTILITIES PLAN

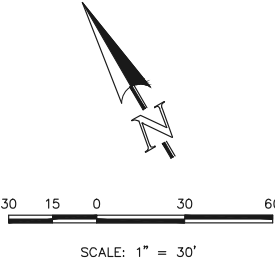
DESIGNED BY	EAS	SCALE	DATE	03/08/2022
DRAWN BY	EAS	(H) 1" = 30'	SHEET	7 OF 19
CHECKED BY		(V) 1" = N/A	JOB NO.	1183.20

FOURSQUARE AT STERLING RANCH
COUNTY OF EL PASO, STATE OF COLORADO SECT. 34, TOWNSHIP 12S, RANGE 6S WEST
PUD DEVELOPMENT PLAN AND PRELIMINARY PLAN



LEGEND

- 6770 EXISTING CONTOUR
- 6770 PROPOSED CONTOUR
- BOUNDARY/FILING LINE
- EXISTING FLOW DIRECTION
- PROPOSED FLOW DIRECTION
- PROPOSED INLET
- PROPOSED STORM PIPE
- EXISTING STORM PIPE
- HP PROPOSED HIGH POINT
- LP PROPOSED LOW POINT

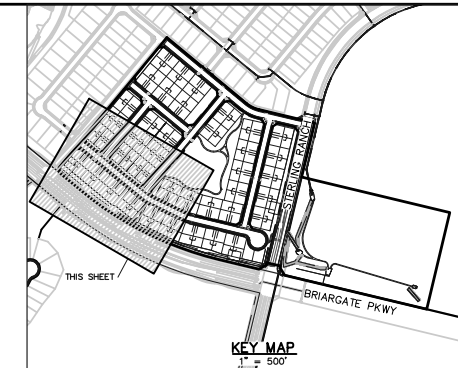
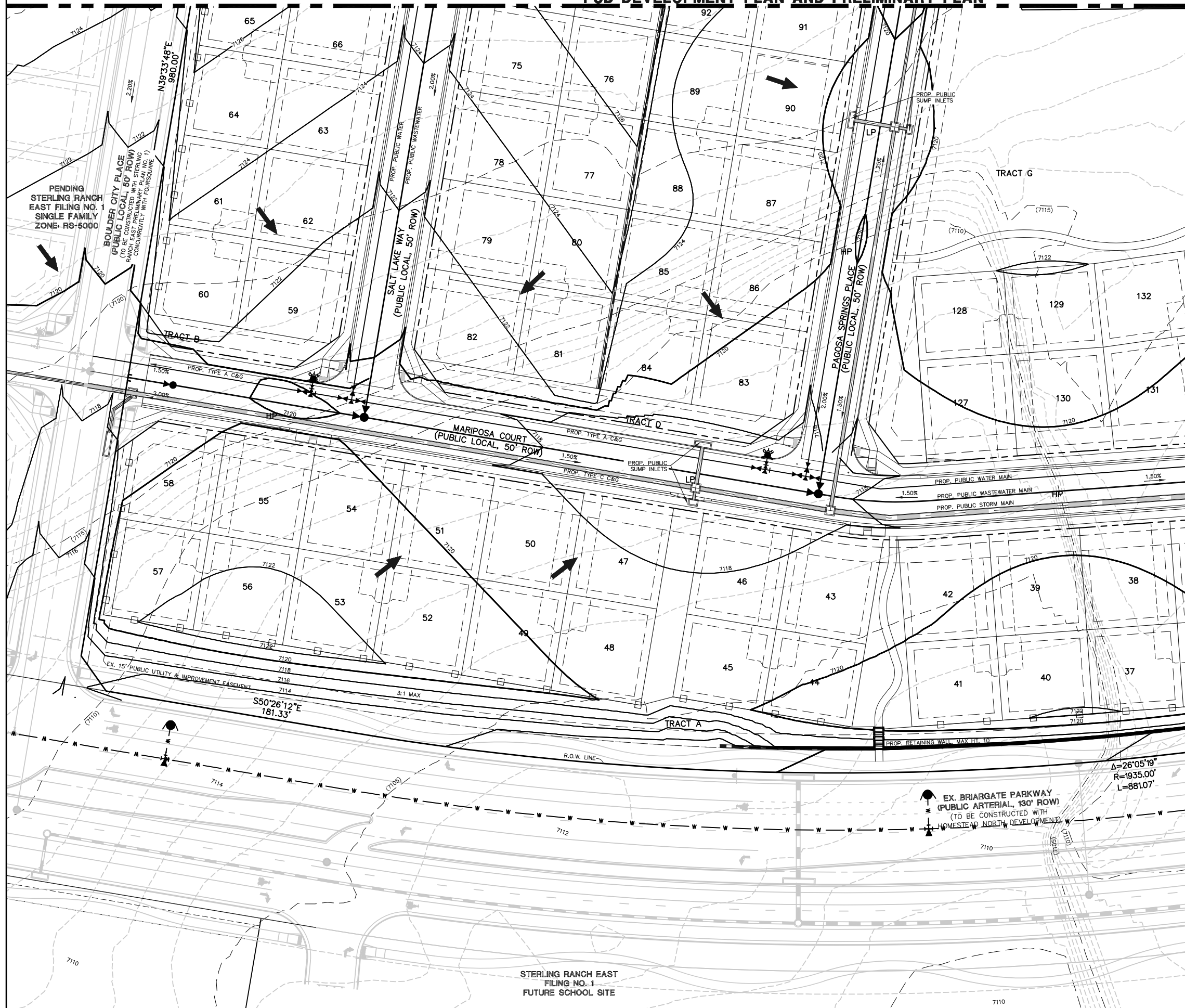


STERLING RANCH EAST PRELIMINARY PLAN NO. 2 PRELIMINARY GRADING & UTILITIES PLAN			
DESIGNED BY	EAS	SCALE	DATE 03/08/2022
DRAWN BY	EAS	(H) 1" = 30'	SHEET 8 OF 19
CHECKED BY		(V) 1" = N/A	JOB NO. 1183.20

619 N. Cascade Avenue, Suite 200
Colorado Springs, Colorado 80903
(719) 785-0790
(719) 785-0799 (Fax)

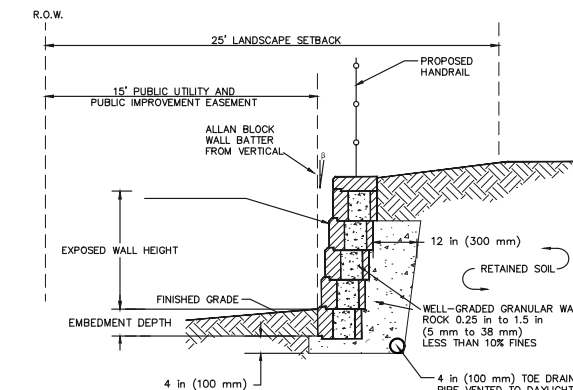
FOURSQUARE AT STERLING RANCH
COUNTY OF EL PASO, STATE OF COLORADO SECT. 34, TOWNSHIP 12S, RANGE 65 WEST
PUD DEVELOPMENT PLAN AND PRELIMINARY PLAN

MATCHLINE SEE SHEET 7



LEGEND

- 6770 EXISTING CONTOUR
- 6770 PROPOSED CONTOUR
- BOUNDARY/FILING LINE
- EXISTING FLOW DIRECTION
- PROPOSED FLOW DIRECTION
- PROPOSED INLET
- PROPOSED STORM PIPE
- EXISTING STORM PIPE
- HP PROPOSED HIGH POINT
- LP PROPOSED LOW POINT



TYPICAL RETAINING WALL DETAIL (STRUCTURAL DESIGN BY OTHERS)
NOT TO SCALE



30 15 0 30 60
SCALE: 1" = 30'

CLASSIC CONSULTING

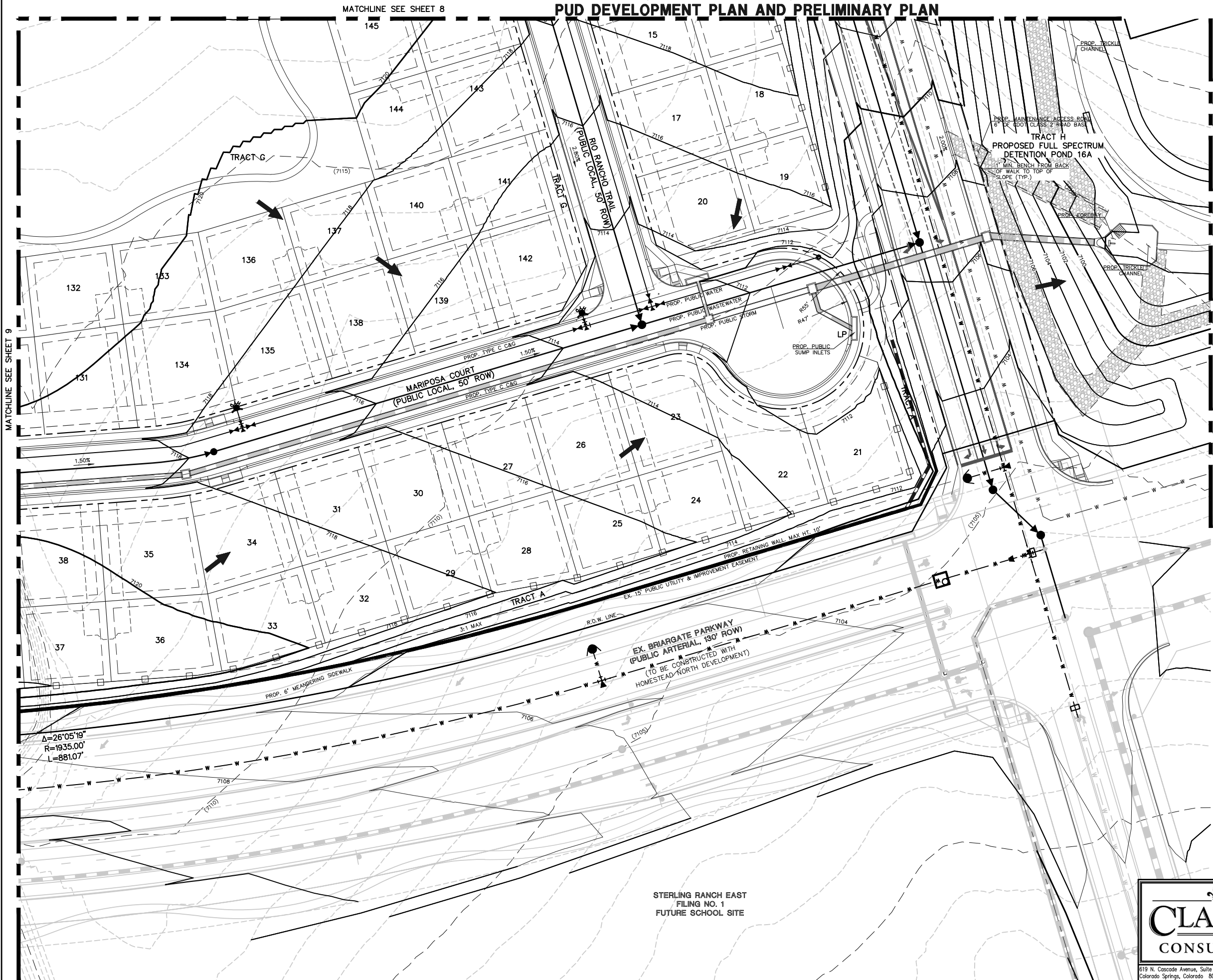
STERLING RANCH EAST
PRELIMINARY PLAN NO. 2
PRELIMINARY GRADING & UTILITIES PLAN

DESIGNED BY	EAS	SCALE	DATE	03/08/2022
DRAWN BY	EAS	(H) 1" = 30'	SHEET	9 OF 19
CHECKED BY	(V) 1" = N/A	JOB NO.	1183.20	

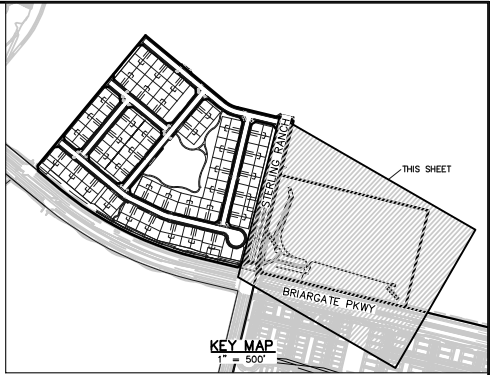
619 N. Cascade Avenue, Suite 200
Colorado Springs, Colorado 80903
(719) 785-0790
(719) 785-0799 (Fax)

CLASSIC CONSULTING

FOURSQUARE AT STERLING RANCH
COUNTY OF EL PASO, STATE OF COLORADO SECT. 34, TOWNSHIP 12S, RANGE 6S WEST
PUD DEVELOPMENT PLAN AND PRELIMINARY PLAN

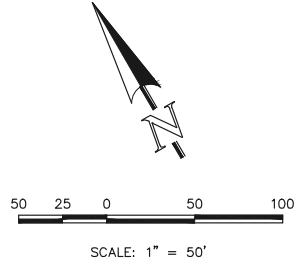


FOURSQUARE AT STERLING RANCH
COUNTY OF EL PASO, STATE OF COLORADO SECT. 34, TOWNSHIP 12S, RANGE 65 WEST
PUD DEVELOPMENT PLAN AND PRELIMINARY PLAN



LEGEND

- 6770 EXISTING CONTOUR
- 6770 PROPOSED CONTOUR
- BOUNDARY/FILING LINE
- EXISTING FLOW DIRECTION
- PROPOSED FLOW DIRECTION
- PROPOSED INLET
- PROPOSED STORM PIPE
- EXISTING STORM PIPE
- HP PROPOSED HIGH POINT
- LP PROPOSED LOW POINT



STERLING RANCH EAST
PRELIMINARY PLAN NO. 2
PRELIMINARY GRADING & UTILITIES PLAN

DESIGNED BY	EAS	SCALE	DATE	03/08/2022
DRAWN BY	EAS	(H) 1" = 30'	SHEET	11 OF 19
CHECKED BY		(V) 1" = N/A	JOB NO.	1183.20

619 N. Cascade Avenue, Suite 200
Colorado Springs, Colorado 80903

(719) 785-0790
(719) 785-0799 (Fax)

CLASSIC CONSULTING

