

**ATTENTION!**  
REPRODUCTION OF THIS DRAWING  
MAY HAVE CAUSED DISTORTION

#	Date	Comment

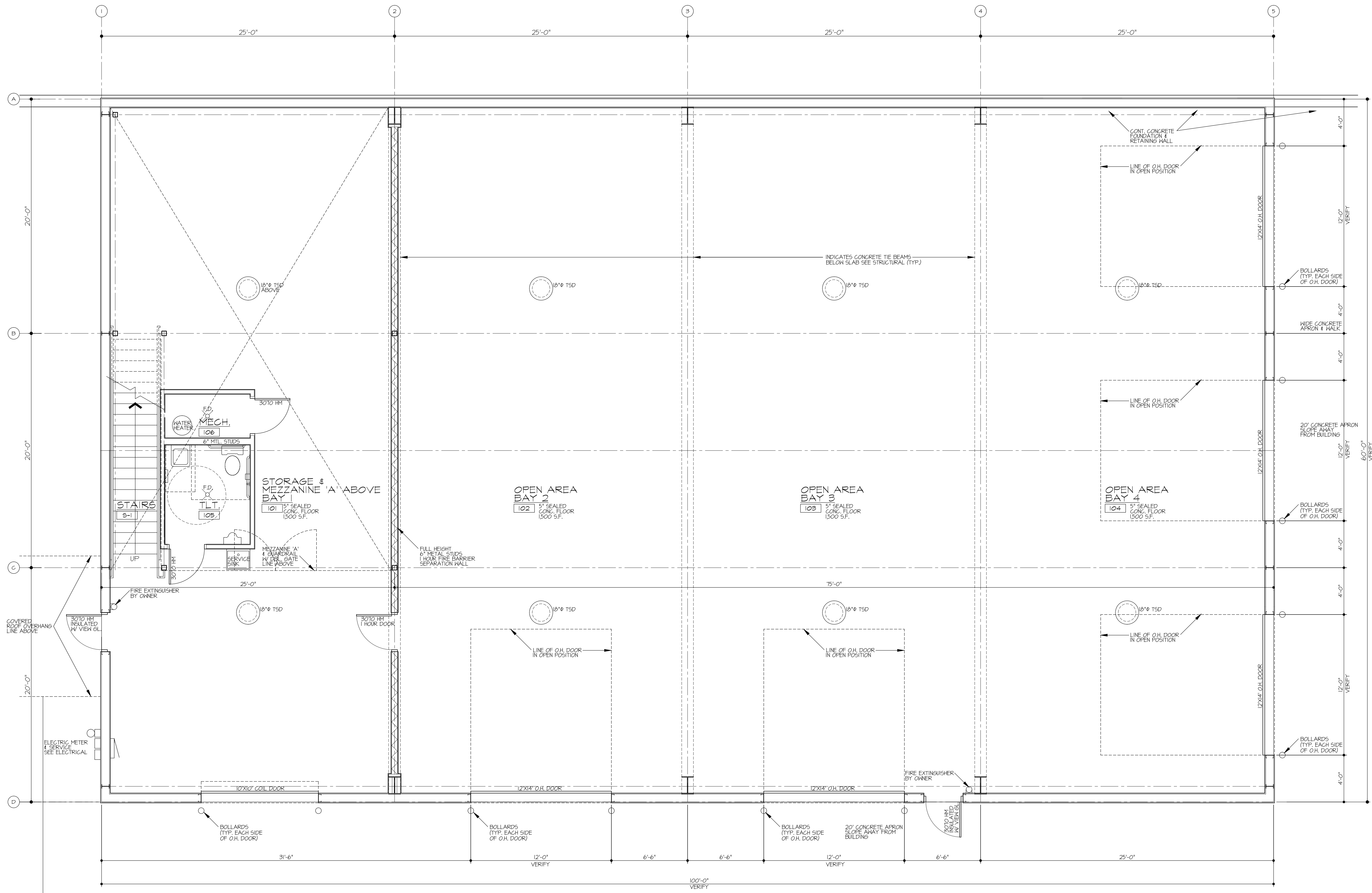
**ALLIANCE BUILDING SYSTEMS**  
JEFF G (719)240-8272  
BRYAN S (719)565-7312

1740 EAGLERIDGE BLVD. #140  
PUEBLO, CO 81008

**OFFICE PLAN  
FLOOR PLAN**  
7470 SOUTHOODR DRIVE.  
EL PASO COUNTY CO.

PROJECT NO.: C20104

DRAWN BY: BGS	DATE: 05/07/2020	SCALE: as shown
DESIGNED BY: BGS	DATE: 05/07/2020	DRAWING NO.: C20104
CHECKED BY: BGS	DATE: 05/07/2020	SHEET NO.: <b>A-1</b>

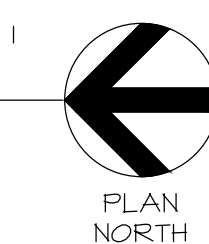


MAIN LEVEL FLOOR PLAN W/ MEZZANINE 'A'

SCALE: 1/4" = 1'-0"

MAIN LEVEL FLOOR PLAN NOTES

- 1) SEE GENERAL NOTES ON SHEET TS-1.
- 2) SEE ASSEMBLY NOTES ON SHEET TS-1.
- 3) SEE MECHANICAL, PLUMBING & ELECTRICAL PLANS.

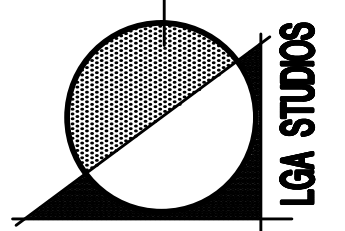


PRELIMINARY REVIEW ONLY  
NOT FOR CONSTRUCTION

Project No.	LAGA18-1605 (MWH-18-930-03)
File No.	A1.1FP
Drawn:	MWH
Checked:	MWH, LG
Issued:	08/26/19
Revisions:	

<b>FLOOR PLAN NOTES</b>	
SCALE: AS NOTED	
Sheet Number:	
<b>A11</b>	
OF 2 SHEETS	

**ARCO Concrete Contractors**  
**New Maintenance Building**  
7470 SOUTHWOOD DRIVE  
FOUNTAIN, COLORADO 80817



Michael W. Heintschel, RA, CSI  
MWH & ASSOCIATES  
Consulting Architectural Services  
Larry Gilland, LEED AP, CSI, CPBD  
201 East Las Animas Street Suite 113  
Colorado Springs, CO. 80903  
Office: (719) 635-0880  
Cell: (719) 684-7008  
LGA  
www.lgastudios.com

Contractor:

COPYRIGHT 2019 LGA STUDIOS. THIS DOCUMENT AND ITS CONTENTS ARE THE PROPERTY OF AND MAY NOT BE REPRODUCED WITHOUT THE WRITTEN PERMISSION OF LGA STUDIOS. ALL RIGHTS RESERVED.