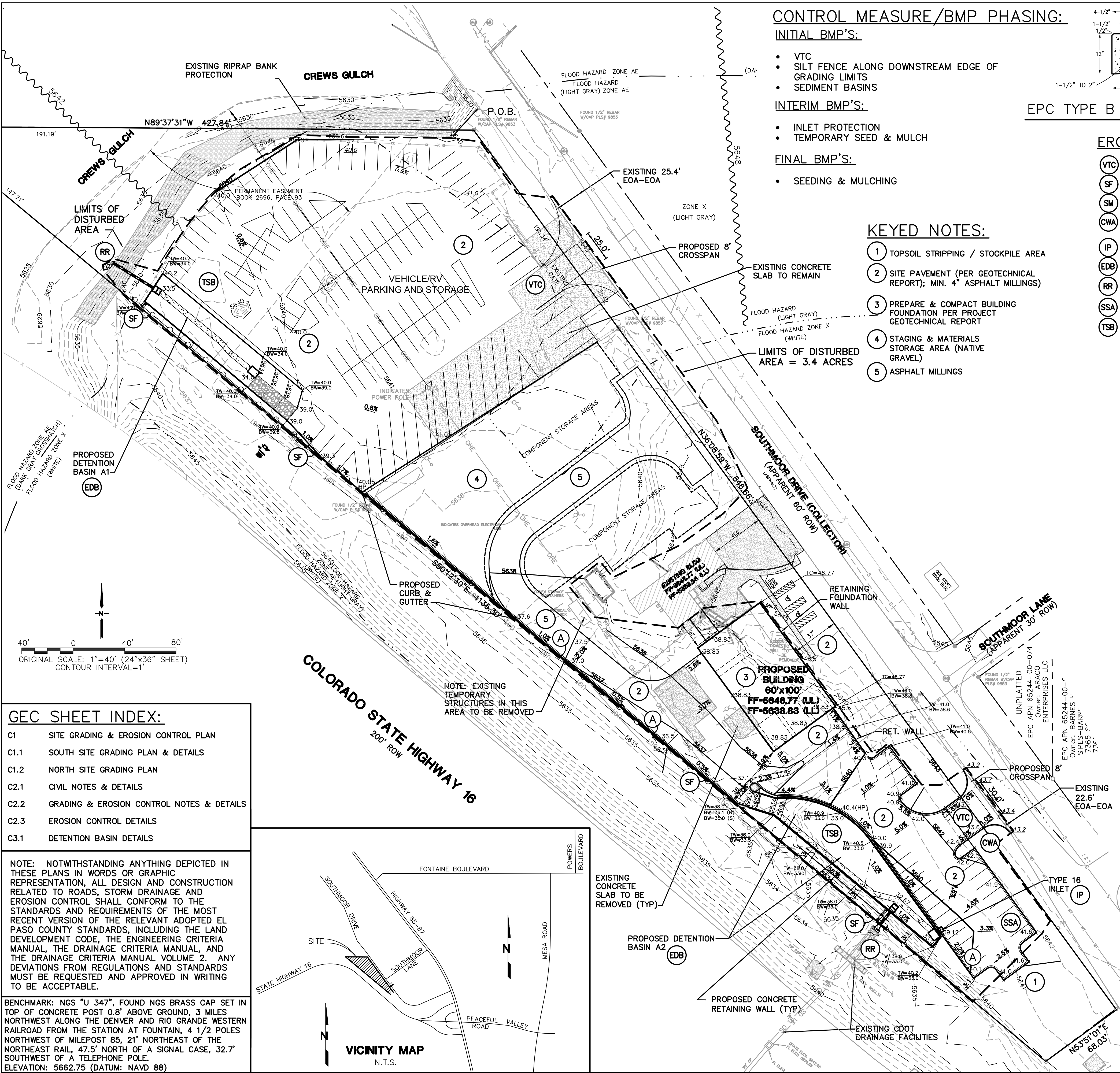


C:\Users\Owner\Dropbox\jpsprojects\111705.araco\dwg\civil\C1.dwg



CONTROL MEASURE/BMP PHASING:

INITIAL BMP'S:

- VTC
- SILT FENCE ALONG DOWNSTREAM EDGE OF GRADING LIMITS
- SEDIMENT BASINS

INTERIM BMP'S:

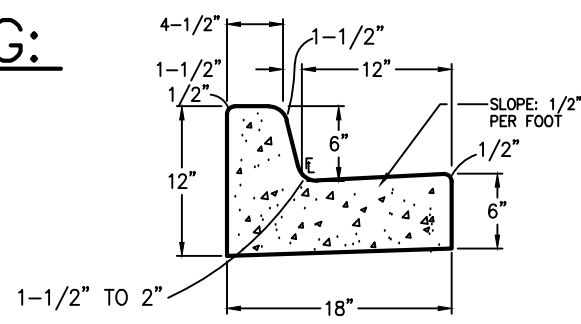
- INLET PROTECTION
- TEMPORARY SEED & MULCH

FINAL BMP'S:

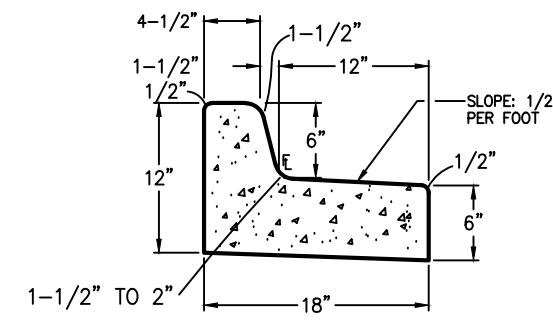
- SEEDING & MULCHING

KEYED NOTES:

- 1 TOPSOIL STRIPPING / STOCKPILE AREA
- 2 SITE PAVEMENT (PER GEOTECHNICAL REPORT); MIN. 4" ASPHALT MILLINGS
- 3 PREPARE & COMPACT BUILDING FOUNDATION PER PROJECT GEOTECHNICAL REPORT
- 4 STAGING & MATERIALS STORAGE AREA (NATIVE GRAVEL)
- 5 ASPHALT MILLINGS



EPC TYPE B (CARRY) CURB A



EPC TYPE B (SPILL) CURB B

EROSION CONTROL LEGEND: LEGEND:

(VTC)	VEHICLE TRACKING CONTROL PAD	---	PROPOSED PROPERTY LINE
(SF)	SILT FENCE	---	EXISTING CONTOURS
(SM)	SEED & MULCH	---	PROPOSED CONTOURS
(CWA)	CONCRETE WASHOUT AREA (TO BE COMPLETELY CONTAINED & REMOVED UPON COMPLETION OF PROJECT)	---	EXISTING SPOT ELEVATIONS
(IP)	INLET PROTECTION	---	PROPOSED SPOT ELEVATIONS
(EDB)	EXTENDED DRAINAGE BASIN	---	PROPOSED GRADES
(RR)	RIPRAP APRON (5'Lx5'Wx2'D; d ₅₀ =12" RR)	---	ROOF DRAIN DOWNSPOUTS W/TRANSITION COUPLINGS & CONNECTION TO STORM DRAIN (COORDINATE W/ARCHITECT AND PLUMBING PLANS)
(SSA)	STABILIZED STAGING AREA	---	
(TSB)	TEMPORARY SEDIMENT BASIN	---	

ESTIMATED EARTHWORK QUANTITY:

UNCLASSIFIED EXCAVATION (TOTAL CUT) = 1,988 CY
* EMBANKMENT FILL = 1,925 CY
NET (CUT) = 63 CY

*(ASSUMES 15% COMPACTION FACTOR)

NOTE: THIS ESTIMATE IS PROVIDED FOR INFORMATION ONLY, REPRESENTING THE CALCULATED BULK EARTHWORK VOLUME TO FINISHED GRADE, EXCLUDING ANY ADJUSTMENT FOR PAVEMENT DEPTHS, ETC. CONTRACTOR SHALL MAKE HIS OWN DETERMINATION OF EARTHWORK QUANTITIES AS BASIS FOR BID PRICING AND NOTIFY ENGINEER OF ANY DISCREPANCIES.

DESIGN ENGINEER'S STATEMENT:

THIS GRADING AND EROSION CONTROL PLAN WAS PREPARED UNDER MY DIRECTION AND SUPERVISION AND IS CORRECT TO THE BEST OF MY KNOWLEDGE AND BELIEF. SAID PLAN HAS BEEN PREPARED ACCORDING TO THE CRITERIA ESTABLISHED BY THE COUNTY FOR GRADING AND EROSION CONTROL PLANS. I ACCEPT RESPONSIBILITY FOR ANY LIABILITY CAUSED BY ANY NEGLIGENT ACTS, ERRORS OR OMISSIONS ON MY PART IN PREPARING THIS PLAN.

JOHN P. SCHWAB, P.E. #29891

DATE

OWNER/DEVELOPER'S STATEMENT:

I, THE OWNER/DEVELOPER HAVE READ AND WILL COMPLY WITH THE REQUIREMENTS OF THE GRADING AND EROSION CONTROL PLAN.

ARACO CONCRETE CONTRACTOR, LLC

DATE

MR. ARTURO ACOSTA
7470 SOUTHMOOR DRIVE
FOUNTAIN, CO 80817

EL PASO COUNTY:

COUNTY PLAN REVIEW IS PROVIDED ONLY FOR GENERAL CONFORMANCE WITH COUNTY DESIGN CRITERIA. THE COUNTY IS NOT RESPONSIBLE FOR THE ACCURACY AND ADEQUACY OF THE DESIGN, DIMENSIONS, AND/OR ELEVATIONS WHICH SHALL BE CONFIRMED AT THE JOB SITE. THE COUNTY THROUGH THE APPROVAL OF THIS DOCUMENT ASSUMES NO RESPONSIBILITY FOR COMPLETENESS AND/OR ACCURACY OF THIS DOCUMENT.

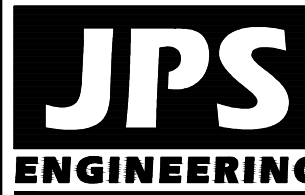
FILED IN ACCORDANCE WITH THE REQUIREMENTS OF THE EL PASO COUNTY LAND DEVELOPMENT CODE, DRAINAGE CRITERIA MANUAL, AND ENGINEERING CRITERIA MANUAL AS AMENDED.

IN ACCORDANCE WITH ECM SECTION 1.12, THESE CONSTRUCTION DOCUMENTS WILL BE VALID FOR CONSTRUCTION FOR A PERIOD OF 2 YEARS FROM THE DATE SIGNED BY THE EL PASO COUNTY ENGINEER. IF CONSTRUCTION HAS NOT STARTED WITHIN THOSE 2 YEARS, THE PLANS WILL NEED TO BE RESUBMITTED FOR APPROVAL, INCLUDING PAYMENT OF REVIEW FEES AT THE PLANNING AND COMMUNITY DEVELOPMENT DIRECTOR'S DISCRETION.

JENNIFER IRVINE, P.E.,
COUNTY ENGINEER / ECM ADMINISTRATOR

DATE

PCD PROJECT NO. PPR-1950



19 E. Willamette Ave.
Colorado Springs, CO
80903

PH: 719-477-9429
FAX: 719-471-0766
www.jpsengr.com



CALL UTILITY NOTIFICATION
CENTER OF COLORADO
1-800-922-1987
CALL 2-BUSINESS DAYS IN ADVANCE
BEFORE YOU DIG GRADE, OR EXCAVATE
FOR THE MEMBER UTILITIES.

BY	DATE
JPS	11/21/19
JPS	7/22/20
JPS	10/06/20
JPS	1/23/21

SITE GRADING & EROSION
CONTROL PLAN

HORZ. SCALE: 1"=40'	DRAWN: BJJ
VERT. SCALE: N/A	DESIGNED: JPS
SURVEYED: LDC	CHECKED: JPS
CREATED: 6/21/19	LAST MODIFIED: 1/23/21
PROJECT NO: 111705	MODIFIED BY: BJJ
SHEET:	

C1

ARACO CONCRETE
7470 SOUTHMOOR DR., COLORADO SPRINGS, COLORADO 80817

SWMP NOTES:

The drawing illustrates the design of an integral forebay for a wastewater treatment system, showing three views: Plan, Slot Detail, and Section.

PLAN: Shows a top-down view of the forebay. It features a central rectangular basin with a width of 8'. Above the basin is a "TYPE 16 INLET" and a "RETAINING WALL". To the left of the basin is a "CONCRETE TRICKLE CHANNEL" with a "SLOT" leading into the basin. The basin is divided into two sections, A1 and A2, with dimensions of 1' and 4' respectively. The total width of the basin is 5'. Section lines A-A are indicated on both sides.

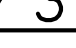
SLOT DETAIL: A cross-sectional view of the slot in the concrete trickle channel. It shows a width of 12" and a depth of 3.1" (Basin A1) and 3.0" (Basin A2). The top of the basin is labeled "TOP OF BASE SLAB".

SECTION: A cross-sectional view of the forebay structure. It shows a "6" CONCRETE SLAB" with "W/#4 BARS @ 12" O.C.E.W." (Welded Wire Mesh). The slab is supported by a "6" CURB" and a "3" channel. The total width of the forebay is 5'. The bottom of the forebay is sloped at 0.5%. Section line A-A is indicated.

INTEGRAL FOREBAY DETAIL

NOT TO SCALE

INTEGRAL FOREBAY DETAIL (1)
NOT TO SCALE

DETENTION POND
ACCESS RAMP 
 NOT TO SCALE

SECTION A-A

SECTION B-B

1
Y

4'-1/2"

1'-1/2"

1'-1/2"

12"

6"

12"

6"

1'-1/2"

TO 2"

24" MAX

MATCH EXISTING GRADE

10"

#4 REBAR @ 12" O.C. EACH WAY

SLOPE: PER FDD

RETAINING CURB

NTS

(C)

PCD PROJECT NO. PPR-1950

KEYED NOTES:

- 1 TOPSOIL STRIPPING / STOCKPILE AREA
- 2 SITE PAVEMENT (PER GEOTECHNICAL REPORT; MIN. 4" ASPHALT MILLINGS)
- 3 PREPARE & COMPACT BUILDING FOUNDATION PER PROJECT GEOTECHNICAL REPORT
- 4 ASPHALT MILLINGS

BENCHMARK: NGS "U 347", FOUND NGS BRASS CAP SET IN TOP OF CONCRETE POST 0.8' ABOVE GROUND, 3 MILES NORTHWEST ALONG THE DENVER AND RIO GRANDE WESTERN RAILROAD FROM THE STATION AT FOUNTAIN, 4 1/2 POLES NORTHWEST OF MILEPOST 85, 21' NORTHEAST OF THE NORTHEAST RAIL, 47.5' NORTH OF A SIGNAL CASE, 32.7' SOUTHWEST OF A TELEPHONE POLE.
ELEVATION: 5662.75 (DATUM: NAVD 88)

② PROPOSED CONCRETE
TRICKLE CHANNEL @
0.5% MIN. SLOPE

PROPOSED DETENTION
BASIN A2
BOT EL=5633.0
SPILLWAY=5636.0
TOP FI=5638.00

REQ'D FSD VOL=0.22 AF
DESIGN VOL=0.28 AF
SEE TSB DETAIL ON SH.C2.2

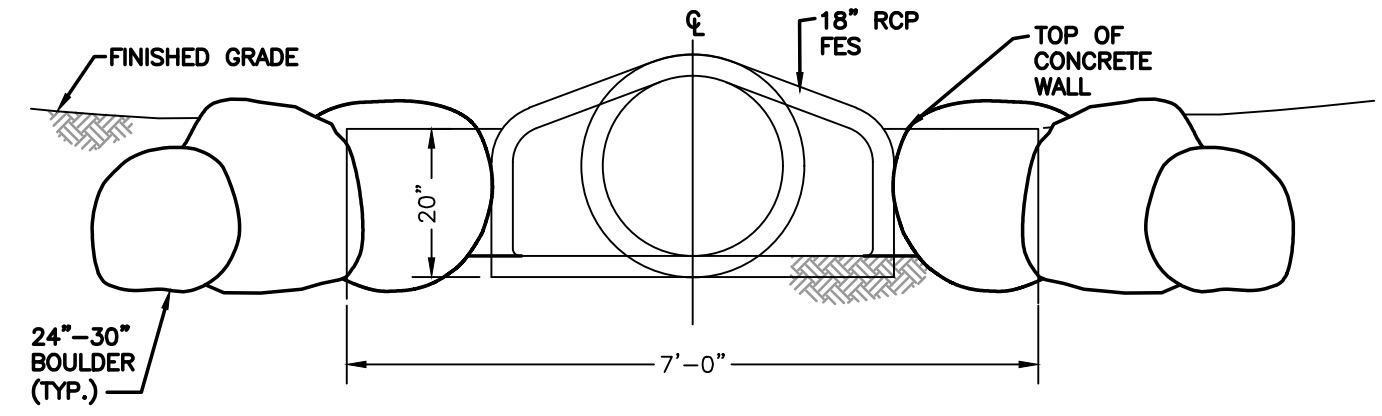
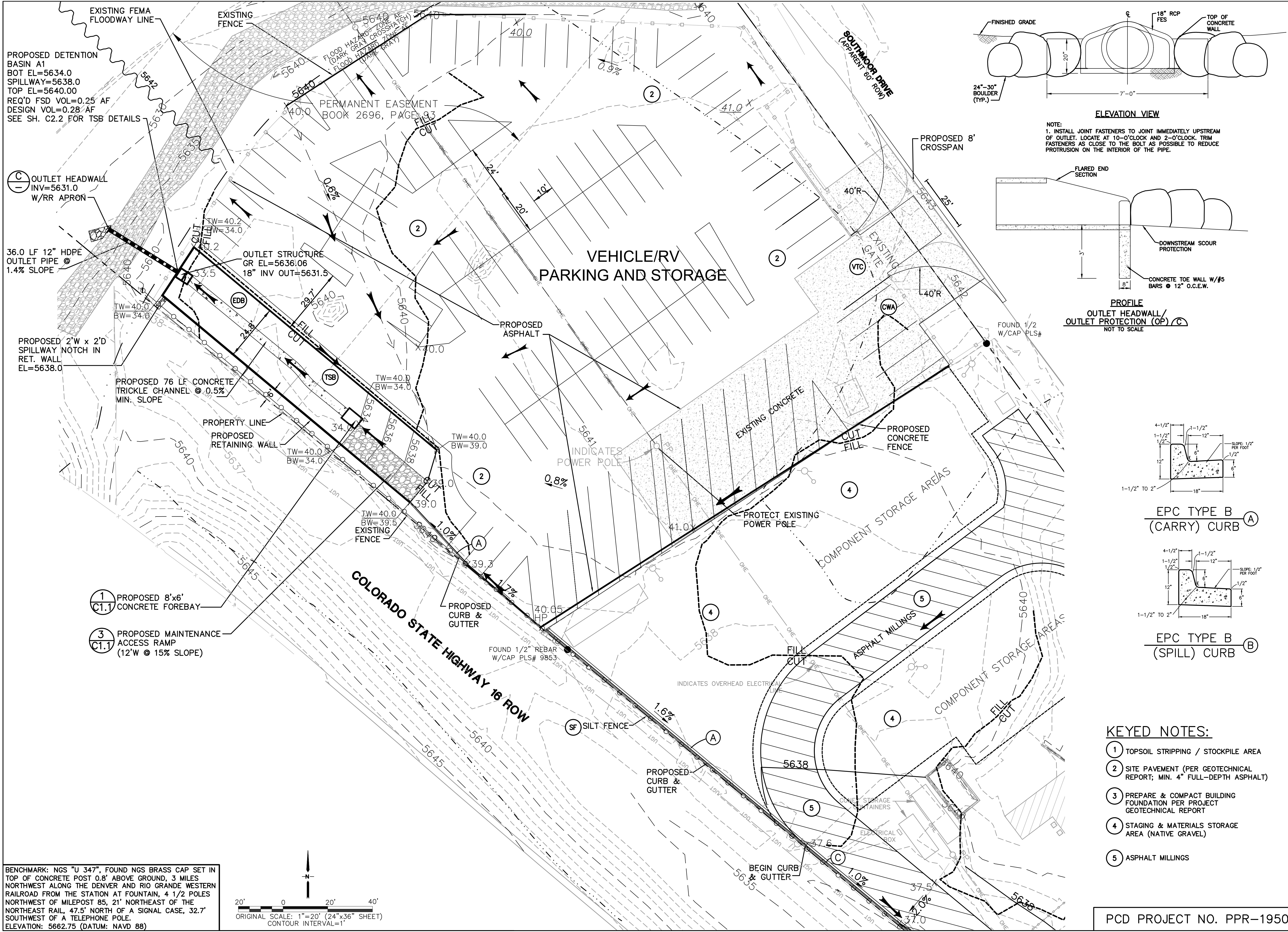
12.6 LF 12" HDPE OUTLET
PIPE @ 0.5% SLOPE W/
12" FFS & RR APRON

ARACO CONCRETE
7470 SOUTHMOOR DR., COLORADO SPRINGS, COLORADO 80817

SOUTH SITE GRADING PLAN & DETAILS

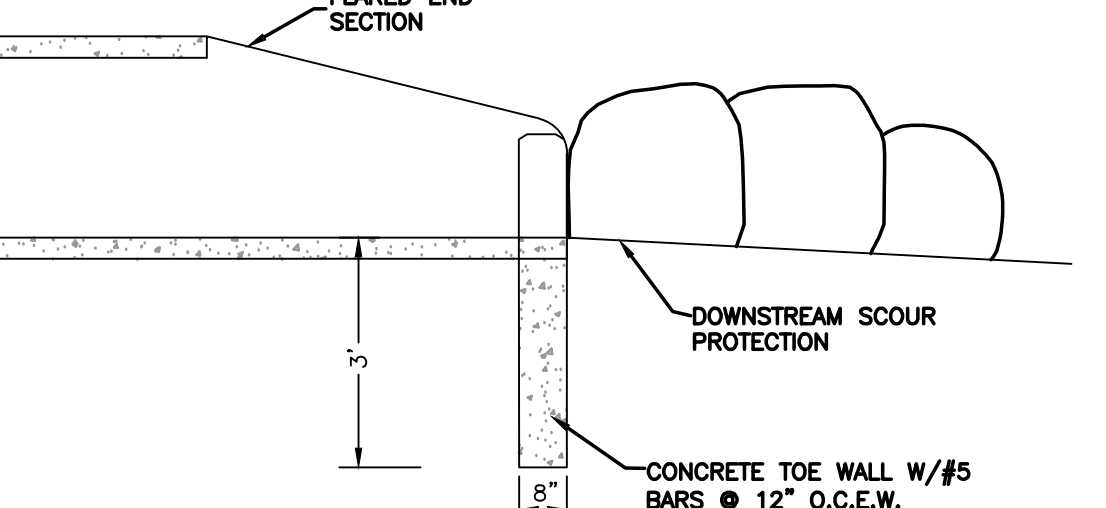
=20'	DRAWN:	BJJ
N/A	DESIGNED:	JPS
LDC	CHECKED:	JPS
1/19	LAST MODIFIED:	1/25/21
1705	MODIFIED BY:	BJJ

C:\Users\Owner\Dropbox\jpsprojects\111705.araco\dwg\civil\C1.2.dwg

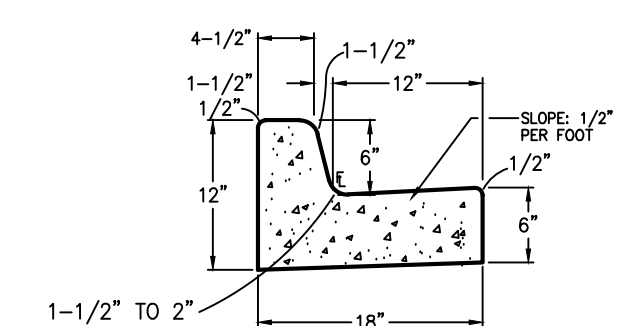


ELEVATION VIEW

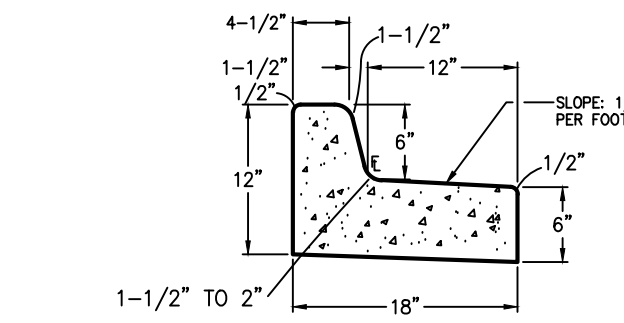
NOTE:
1. INSTALL JOINT FASTENERS TO JOINT IMMEDIATELY UPSTREAM OF OUTLET. LOCATE AT 10-O'CLOCK AND 2-O'CLOCK. TRIM FASTENERS AS CLOSE TO THE BOLT AS POSSIBLE TO REDUCE PROTRUSION ON THE INTERIOR OF THE PIPE.



PROFILE
OUTLET HEADWALL/
OUTLET PROTECTION (OP) C
NOT TO SCALE



EPC TYPE B (CARRY) CURB

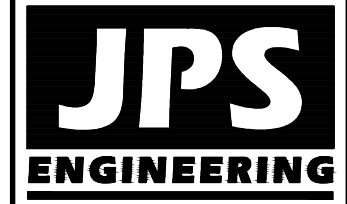


EPC TYPE B (SPILL) CURB

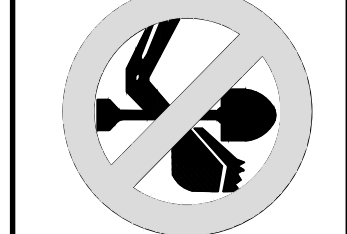
KEYED NOTES:

- 1 TOPSOIL STRIPPING / STOCKPILE AREA
- 2 SITE PAVEMENT (PER GEOTECHNICAL REPORT; MIN. 4" FULL-DEPTH ASPHALT)
- 3 PREPARE & COMPACT BUILDING FOUNDATION PER PROJECT GEOTECHNICAL REPORT
- 4 STAGING & MATERIALS STORAGE AREA (NATIVE GRAVEL)
- 5 ASPHALT MILLINGS

PCD PROJECT NO. PPR-1950



19 E. Willamette Ave.
Colorado Springs, CO
80903
PH: 719-477-9429
FAX: 719-471-0766
www.jpsengr.com



CALL UTILITY NOTIFICATION
CENTER OF COLORADO
1-800-922-1987
BEFORE YOU DIG, GRADE, OR EXCAVATE
CALL 2-BUSINESS DAYS IN ADVANCE
FOR THE MEMBER UTILITIES.

NO.	REVISION	BY	DATE
1	EPC SUBMITTAL	JPS	10/23/19
2	EPC COMMENTS	JPS	7/22/20
3	EPC COMMENTS	JPS	10/06/20
4	EPC COMMENTS	JPS	1/25/21

NORTH SITE GRADING PLAN

HORZ. SCALE: 1"=20'	DRAWN: BJJ
VERT. SCALE: N/A	DESIGNED: JPS
SURVEYED: LDC	CHECKED: JPS
CREATED: 6/21/19	LAST MODIFIED: 7/25/21
PROJECT NO: 111705	MODIFIED BY: BJJ

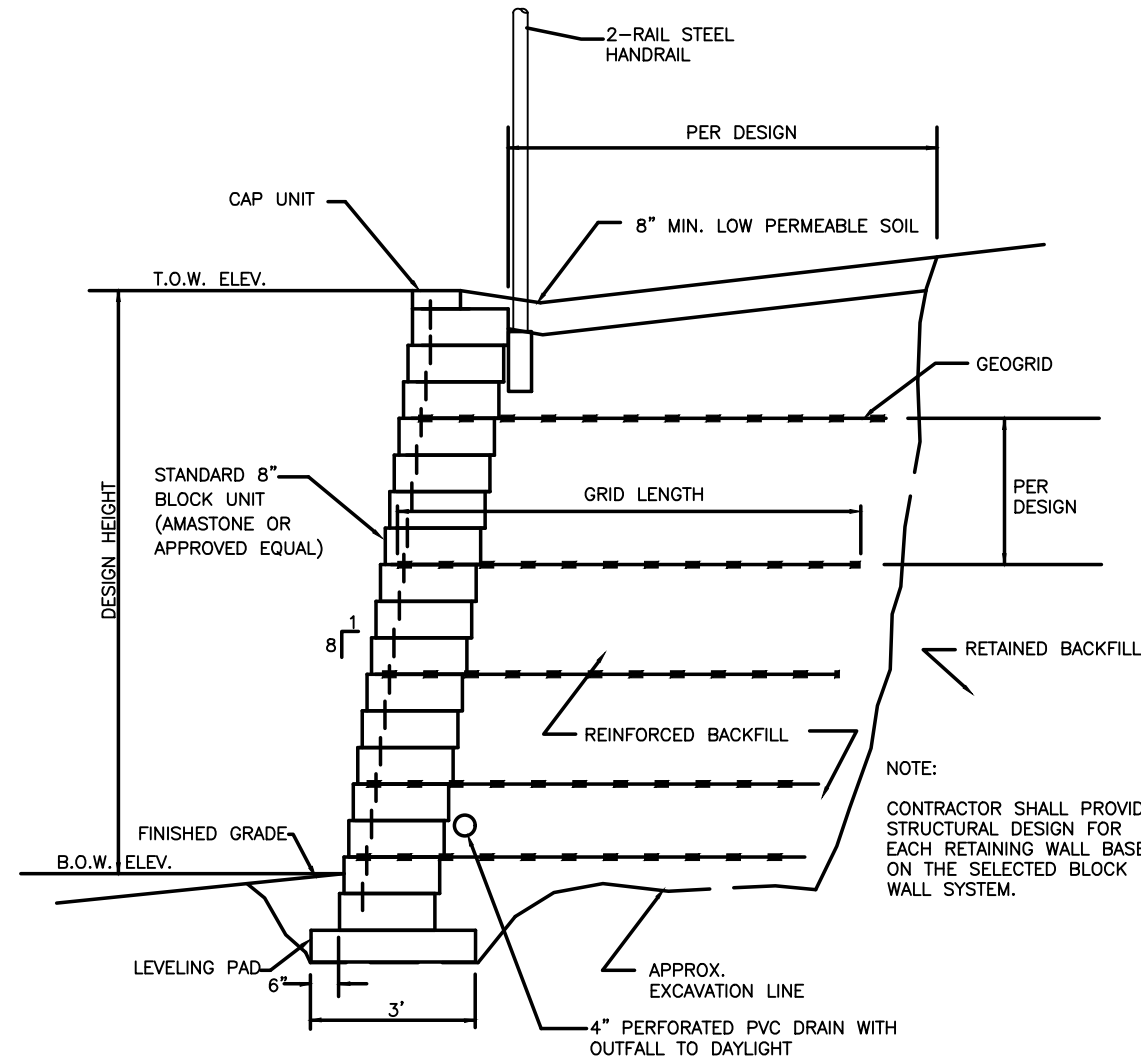
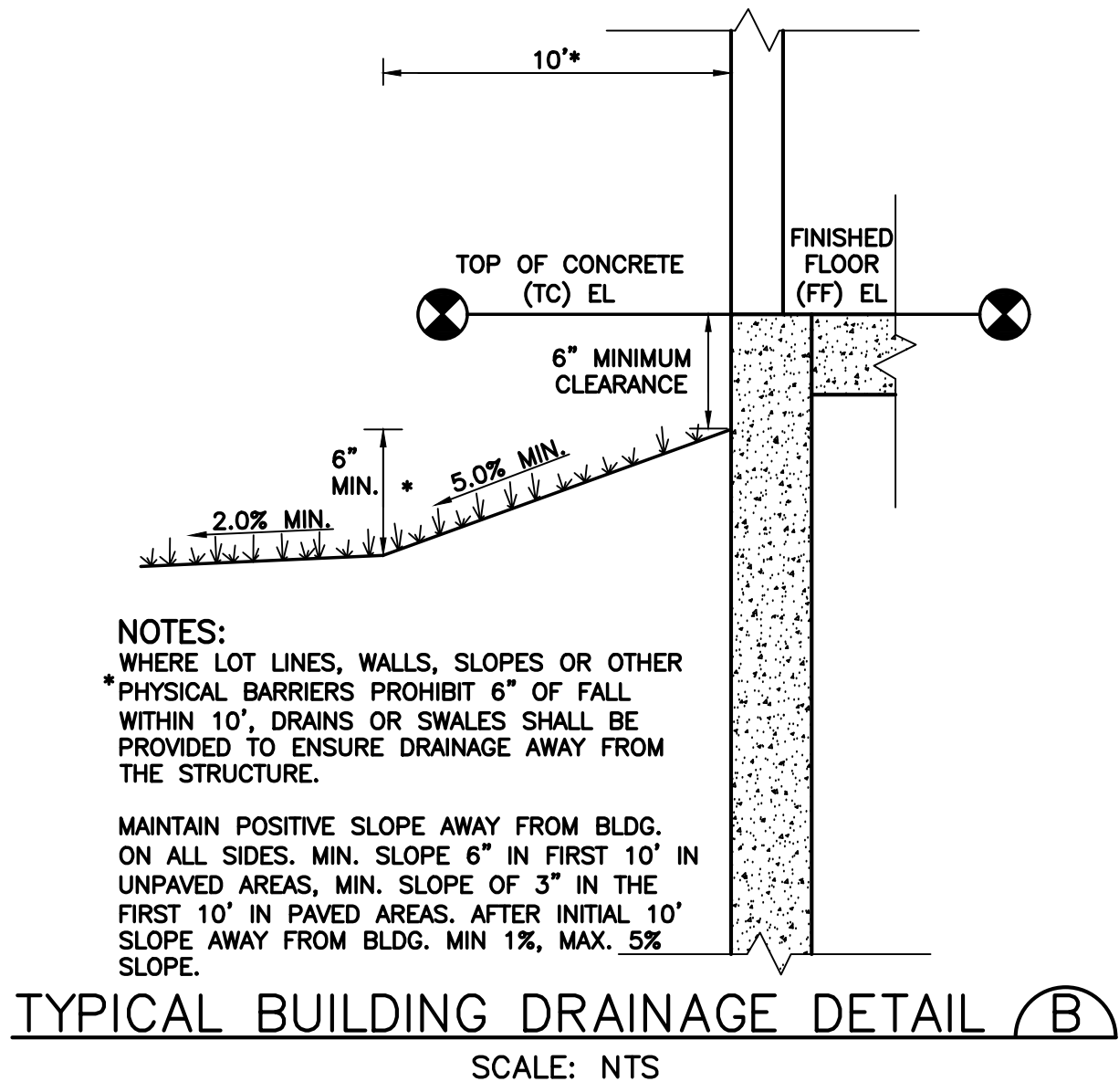
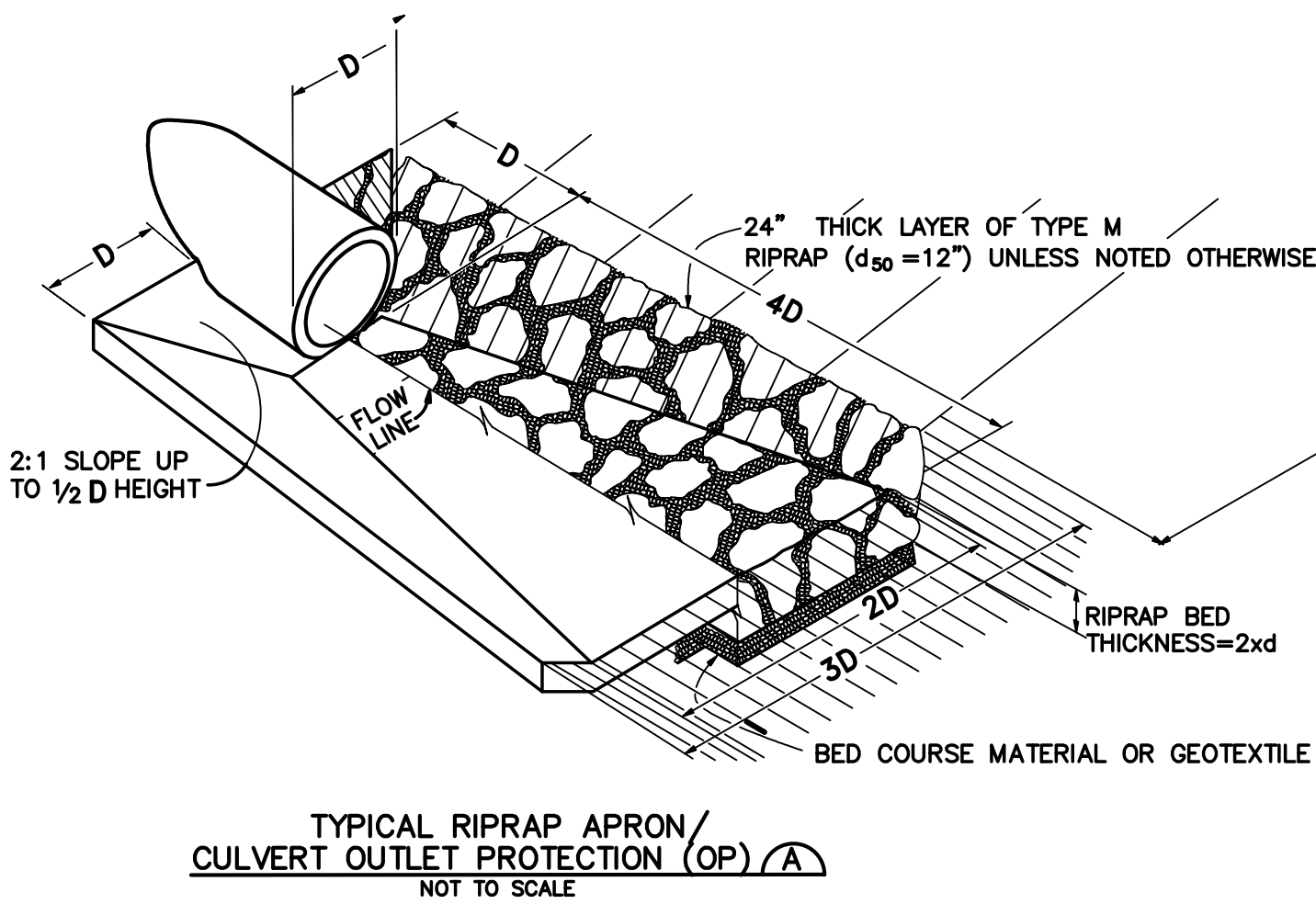
SHEET: C1.2

GENERAL CIVIL NOTES:

- All construction shall meet the following standards & specifications:
 - 2009 International Building Code.
 - Pikes Peak Regional Building Code, latest edition.
 - El Paso County Engineering Criteria Manual (ECM), latest edition.
 - Project Geotechnical Report.
- The contractor shall be responsible for the notification and field location of all existing utilities, whether shown on the plans or not, before beginning construction. Location of existing utilities shall be verified by the contractor prior to actual construction.
- The contractor shall have one (1) signed copy of these approved plans and one (1) copy of the appropriate design and construction standards and specifications at the job site at all times:
 - El Paso County Engineering Criteria Manual.
- Storm drain pipe shall be rcp class iii with class c bedding unless otherwise noted.
- Stationing is at centerline unless otherwise noted. All elevations are at flowline unless otherwise noted. All dimensions are from face of curb unless otherwise noted. Lengths shown for storm sewer pipes are to center of manhole.
- Contractor shall coordinate with gas, electric, telephone and cable t.v. Utility suppliers for installation of all utilities. Minimum cover for all dry utilities shall be 36".
- Contractor shall remove and dispose of all existing structures, debris, waste and other unsuitable fill material found within the limits of excavation.
- Match into existing grades at 3:1 max cut and fill slopes.
- Revegetation of all disturbed areas shall be done with 4" topsoil and dry land grass seed after fine grading is complete ("foothills seed mix").
- Erosion control shall consist of silt fence and hay bales as shown on the drawing, and topsoil with grass seed, which will be watered until vegetation has been re-established.
- The erosion control measures outlined on this plan are the responsibility of the contractor to monitor and replace, regrade, and rebuild as necessary until vegetation is re-established.
- Contractor shall implement best management practices in a manner that will protect adjacent properties and public facilities from the adverse effects of erosion and sedimentation as a result of construction and earthwork activities within the project site.
- Additional erosion control measures may be required as determined by site conditions.
- The contractor will take the necessary precautions to protect existing utilities from damage due to this operation. Any damage to the utilities will be repaired at the contractor's expense, and any service disruption will be settled by the contractor.
- All backfill, sub-base, and/or base course material shall be compacted per the project geotechnical report and County specifications.
- Concrete used in curb and gutter, sidewalk, and crosspan construction shall meet County criteria.
- All finished grades shall have a minimum 1.0% slope to provide positive drainage.
- Contractor shall obtain all required permits prior to beginning work.

HANDICAP ACCESS NOTES:

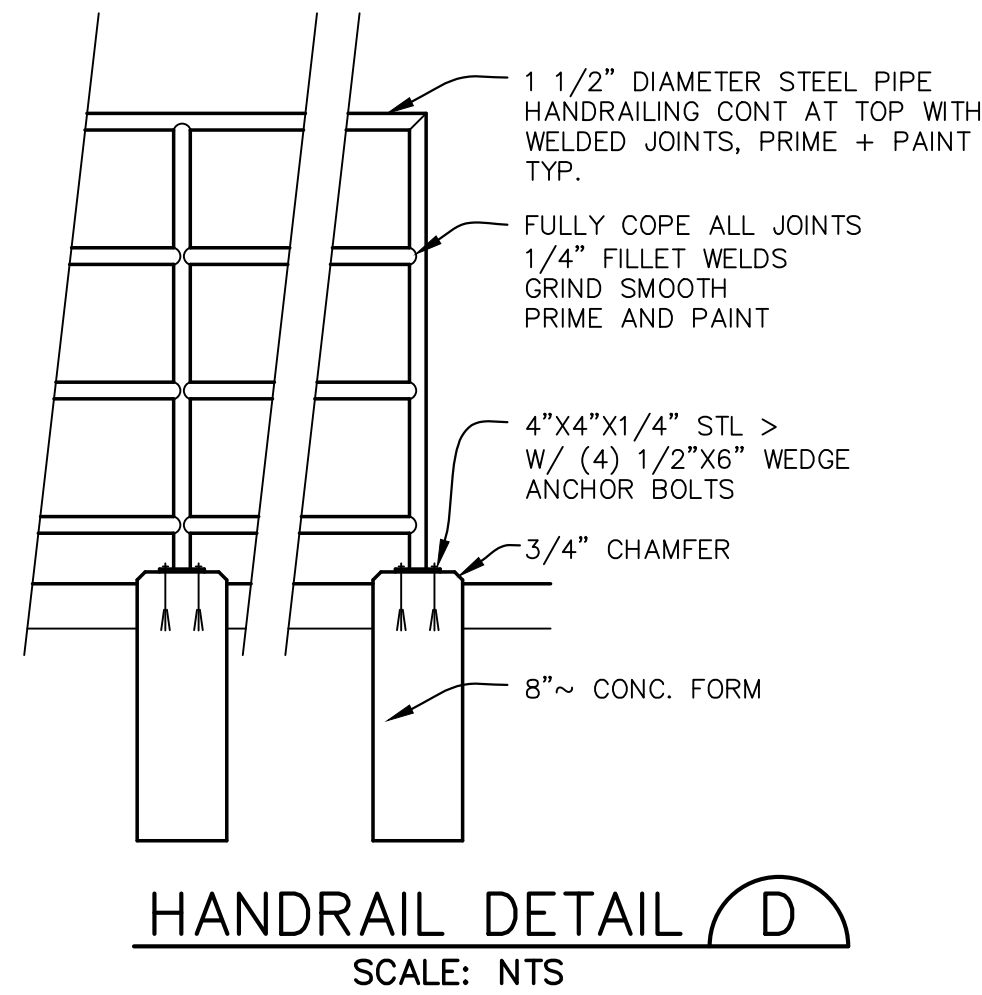
- RAMPS ARE NOT TO BE PLACED IN HANDICAP ACCESS AISLES.
- ACCESS AISLES MAY NOT EXCEED A 2% (1:48) SLOPE IN ANY DIRECTION.
- HANDICAP RAMPS MAY NOT EXCEED A SLOPE OF 8% (1:12).
- THE MINIMUM WIDTH FOR HANDICAPPED RAMPS IS 36 INCHES. THE SIDES OF RAMPS MAY NOT EXCEED A SLOPE OF 10% UNLESS PROTECTED WITH A HANDRAIL.
- HANDICAPPED PARKING SHALL MEET ALL OTHER APPLICABLE CITY AND ADA CODE REQUIREMENTS.



MODULAR BLOCK RETAINING WALL DETAIL (C)

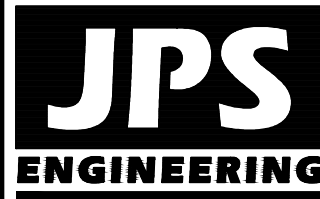
SCALE: NTS

NOTE: ALTERNATIVE CONCRETE RETAINING WALLS MAY BE USED AT OWNER'S DISCRETION (REFER TO STRUCTURAL DESIGN BY OTHERS)



ARACO CONCRETE

7470 SOUTHMOOR DR., COLORADO SPRINGS, COLORADO 80817



19 E. Willamette Ave.
Colorado Springs, CO
80903
PH: 719-477-9429
FAX: 719-471-0766
www.jpsengr.com



CALL UTILITY NOTIFICATION
CENTER OF COLORADO
1-800-922-1987
CALL OR VISIT US IN ADVANCE
BEFORE YOU DIG, GRADE, OR EXCAVATE
FOR THE MARKING OF UNDERGROUND
MEMBER UTILITIES

No.	REVISION	BY	DATE
A	EPC SUBMITTAL	JPS	10/22/19
A	COUNTY COMMENTS	JPS	7/22/20

CIVIL NOTES &
DETAILS

HORZ. SCALE:	N/A	DRAWN:	BJJ
VERT. SCALE:	N/A	DESIGNED:	JPS
SURVEYED:	LDC	CHECKED:	JPS
CREATED:	6/21/19	LAST MODIFIED:	7/22/21
PROJECT NO:	111705	MODIFIED BY:	BJJ

SHEET: C2.1

STANDARD NOTES FOR EL PASO COUNTY GRADING AND EROSION CONTROL PLANS.

REVISED 7/02/19

1. STORMWATER DISCHARGES FROM CONSTRUCTION SITES SHALL NOT CAUSE OR THREATEN TO CAUSE POLLUTION, CONTAMINATION, OR DEGRADATION OF STATE WATERS. ALL WORK AND EARTH DISTURBANCE SHALL BE DONE IN A MANNER THAT MINIMIZES POLLUTION OF ANY ON-SITE OR OFF-SITE WATERS, INCLUDING WETLANDS.
2. NOTWITHSTANDING ANYTHING DEPICTED IN THESE PLANS IN WORDS OR GRAPHIC REPRESENTATION, ALL DESIGN AND CONSTRUCTION RELATED TO ROADS, STORM DRAINAGE AND EROSION CONTROL SHALL CONFORM TO THE STANDARDS AND REQUIREMENTS OF THE MOST RECENT VERSION OF THE RELEVANT ADOPTED EL PASO COUNTY STANDARDS, INCLUDING THE LAND DEVELOPMENT CODE, THE ENGINEERING CRITERIA MANUAL, THE DRAINAGE CRITERIA MANUAL, AND THE DRAINAGE CRITERIA MANUAL VOLUME 2. ANY DEVIATIONS FROM REGULATIONS AND STANDARDS MUST BE REQUESTED, AND APPROVED, IN WRITING.
3. A SEPARATE STORMWATER MANAGEMENT PLAN (SMWP) FOR THIS PROJECT SHALL BE COMPLETED AND AN EROSION AND STORMWATER QUALITY CONTROL PERMIT (ESQCP) ISSUED PRIOR TO COMMENCING CONSTRUCTION. MANAGEMENT OF THE SWMP DURING CONSTRUCTION IS THE RESPONSIBILITY OF THE DESIGNATED QUALIFIED STORMWATER MANAGER OR CERTIFIED EROSION CONTROL INSPECTOR. THE SWMP SHALL BE LOCATED ON SITE AT ALL TIMES DURING CONSTRUCTION AND SHALL BE KEPT UP TO DATE WITH WORK PROGRESS AND CHANGES IN THE FIELD.
4. ONCE THE ESQCP IS APPROVED AND A "NOTICE TO PROCEED" HAS BEEN ISSUED, THE CONTRACTOR MAY INSTALL THE INITIAL STAGE EROSION AND SEDIMENT CONTROL MEASURES AS INDICATED ON THE APPROVED GEC. A PRECONSTRUCTION MEETING BETWEEN THE CONTRACTOR, ENGINEER, AND EL PASO COUNTY WILL BE HELD PRIOR TO ANY CONSTRUCTION. IT IS THE RESPONSIBILITY OF THE APPLICANT TO COORDINATE THE MEETING TIME AND PLACE WITH COUNTY STAFF.
5. CONTROL MEASURES MUST BE INSTALLED PRIOR TO COMMENCEMENT OF ACTIVITIES THAT COULD CONTRIBUTE POLLUTANTS TO STORMWATER. CONTROL MEASURES FOR ALL SLOPES, CHANNELS, DITCHES, AND DISTURBED LAND AREAS SHALL BE INSTALLED IMMEDIATELY UPON COMPLETION OF THE DISTURBANCE.
6. ALL TEMPORARY SEDIMENT AND EROSION CONTROL MEASURES SHALL BE MAINTAINED AND REMAIN IN EFFECTIVE OPERATING CONDITION UNTIL PERMANENT SOIL EROSION CONTROL MEASURES ARE IMPLEMENTED AND FINAL STABILIZATION IS ESTABLISHED. ALL PERSONS ENGAGED IN LAND DISTURBANCE ACTIVITIES SHALL ASSESS THE ADEQUACY OF CONTROL MEASURES AT THE SITE AND IDENTIFY IF CHANGES TO THOSE CONTROL MEASURES ARE NEEDED TO ENSURE THE CONTINUED EFFECTIVE PERFORMANCE OF THE CONTROL MEASURES. ALL CHANGES TO TEMPORARY SEDIMENT AND EROSION CONTROL MEASURES MUST BE INCORPORATED INTO THE STORMWATER MANAGEMENT PLAN.
7. TEMPORARY STABILIZATION SHALL BE IMPLEMENTED ON DISTURBED AREAS AND STOCKPILES WHERE GROUND DISTURBING CONSTRUCTION ACTIVITY HAS PERMANENTLY CEASED OR TEMPORARILY CEASED FOR LONGER THAN 14 DAYS.
8. FINAL STABILIZATION MUST BE IMPLEMENTED AT ALL APPLICABLE CONSTRUCTION SITES. FINAL STABILIZATION IS ACHIEVED WHEN ALL GROUND DISTURBING ACTIVITIES ARE COMPLETE AND ALL DISTURBED AREAS EITHER HAVE A UNIFORM VEGETATIVE COVER WITH INDIVIDUAL PLANT DENSITY OF 70 PERCENT OF PRE-DISTURBANCE LEVELS ESTABLISHED OR EQUIVALENT PERMANENT ALTERNATIVE STABILIZATION METHOD IS IMPLEMENTED. ALL TEMPORARY SEDIMENT AND EROSION CONTROL MEASURES SHALL BE REMOVED UPON FINAL STABILIZATION AND BEFORE PERMIT CLOSURE.
9. ALL PERMANENT STORMWATER MANAGEMENT FACILITIES SHALL BE INSTALLED AS DESIGNED IN THE APPROVED PLANS. ANY PROPOSED CHANGES THAT AFFECT THE DESIGN OR FUNCTION OF PERMANENT STORMWATER MANAGEMENT STRUCTURES MUST BE APPROVED BY THE ECM ADMINISTRATOR PRIOR TO IMPLEMENTATION.
10. EARTH DISTURBANCES SHALL BE CONDUCTED IN SUCH A MANNER SO AS TO EFFECTIVELY MINIMIZE ACCELERATED SOIL EROSION AND RESULTING SEDIMENTATION. ALL DISTURBANCES SHALL BE DESIGNED, CONSTRUCTED, AND COMPLETED SO THAT THE EXPOSED AREA OF ANY DISTURBED LAND SHALL BE LIMITED TO THE SHORTEST PRACTICAL PERIOD OF TIME. PRE-EXISTING VEGETATION SHALL BE PROTECTED AND MAINTAINED WITHIN 50 HORIZONTAL FEET OF A WATERS OF THE STATE UNLESS SHOWN TO BE INFEASIBLE AND SPECIFICALLY REQUESTED AND APPROVED.
11. COMPACTION OF SOIL MUST BE PREVENTED IN AREAS DESIGNATED FOR INFILTRATION CONTROL MEASURES OR WHERE FINAL STABILIZATION WILL BE ACHIEVED BY VEGETATIVE COVER. AREAS DESIGNATED FOR INFILTRATION CONTROL MEASURES SHALL ALSO BE PROTECTED FROM SEDIMENTATION DURING CONSTRUCTION UNTIL FINAL STABILIZATION IS ACHIEVED. IF COMPACTION PREVENTION IS NOT FEASIBLE DUE TO SITE CONSTRAINTS, ALL AREAS DESIGNATED FOR INFILTRATION AND VEGETATION CONTROL MEASURES MUST BE LOOSENEED PRIOR TO INSTALLATION OF THE CONTROL MEASURE(S).
12. ANY TEMPORARY OR PERMANENT FACILITY DESIGNED AND CONSTRUCTED FOR THE CONVEYANCE OF STORMWATER AROUND, THROUGH, OR FROM THE EARTH DISTURBANCE AREA SHALL BE A STABILIZED CONVEYANCE DESIGNED TO MINIMIZE EROSION AND THE DISCHARGE OF SEDIMENT OFF SITE.
13. CONCRETE WASH WATER SHALL BE CONTAINED AND DISPOSED OF IN ACCORDANCE WITH THE SWMP. NO WASH WATER SHALL BE DISCHARGED TO OR ALLOWED TO ENTER STATE WATERS, INCLUDING ANY SURFACE OR SUBSURFACE STORM DRAINAGE SYSTEM OR FACILITIES. CONCRETE WASHOUTS SHALL NOT BE LOCATED IN AN AREA WHERE SHALLOW GROUNDWATER MAY BE PRESENT, OR WITHIN 50 FEET OF A SURFACE WATER BODY, CREEK OR STREAM.
14. DURING DEWATERING OPERATIONS OF UNCONTAMINATED GROUND WATER MAY BE DISCHARGED ON SITE, BUT SHALL NOT LEAVE THE SITE IN THE FORM OF SURFACE RUNOFF UNLESS AN APPROVED STATE DEWATERING PERMIT IS IN PLACE.
15. EROSION CONTROL BLANKETING OR OTHER PROTECTIVE COVERING SHALL BE USED ON SLOPES STEEPER THAN 3:1.
16. CONTRACTOR SHALL BE RESPONSIBLE FOR THE REMOVAL OF ALL WASTES FROM THE CONSTRUCTION SITE FOR DISPOSAL IN ACCORDANCE WITH LOCAL AND STATE REGULATORY REQUIREMENTS. NO CONSTRUCTION DEBRIS, TREE SLASH, BUILDING MATERIAL WASTES OR UNUSED BUILDING MATERIALS SHALL BE BURIED, DUMPED, OR DISCHARGED AT THE SITE.
17. WASTE MATERIALS SHALL NOT BE TEMPORARILY PLACED OR STORED IN THE STREET, ALLEY, OR OTHER PUBLIC WAY, UNLESS IN ACCORDANCE WITH AN APPROVED TRAFFIC CONTROL PLAN. CONTROL MEASURES MAY BE REQUIRED BY EL PASO COUNTY ENGINEERING IF DEEMED NECESSARY, BASED ON SPECIFIC CONDITIONS AND CIRCUMSTANCES.
18. TRACKING OF SOILS AND CONSTRUCTION DEBRIS OFF-SITE SHALL BE MINIMIZED. MATERIALS TRACKED OFF-SITE SHALL BE CLEANED UP AND PROPERLY DISPOSED OF IMMEDIATELY.
19. THE OWNER/DEVELOPER SHALL BE RESPONSIBLE FOR THE REMOVAL OF ALL CONSTRUCTION DEBRIS, DIRT, TRASH, ROCK, SEDIMENT, SOIL, AND SAND THAT MAY ACCUMULATE IN ROADS, STORM DRAINS AND OTHER DRAINAGE CONVEYANCE SYSTEMS AND STORMWATER APPURTENANCES AS A RESULT OF SITE DEVELOPMENT.
20. THE QUANTITY OF MATERIALS STORED ON THE PROJECT SITE SHALL BE LIMITED, AS MUCH AS PRACTICAL, TO THAT QUANTITY REQUIRED TO PERFORM THE WORK IN AN ORDERLY SEQUENCE. ALL MATERIALS STORED ON-SITE SHALL BE STORED IN A NEAT, ORDERLY MANNER, IN THEIR ORIGINAL CONTAINERS, WITH ORIGINAL MANUFACTURER'S LABELS.
21. NO CHEMICAL(S) HAVING THE POTENTIAL TO BE RELEASED IN STORMWATER ARE TO BE STORED OR USED ONSITE UNLESS PERMISSION FOR THE USE OF SUCH CHEMICAL(S) IS GRANTED IN WRITING BY THE ECM ADMINISTRATOR. IN GRANTING APPROVAL FOR THE USE OF SUCH CHEMICAL(S), SPECIAL CONDITIONS AND MONITORING MAY BE REQUIRED.
22. BULK STORAGE OF ALLOWED PETROLEUM PRODUCTS OR OTHER ALLOWED LIQUID CHEMICALS IN EXCESS OF 55 GALLONS SHALL REQUIRE ADEQUATE SECONDARY CONTAINMENT PROTECTION TO CONTAIN ALL SPILLS ONSITE AND TO PREVENT ANY SPILLED MATERIALS FROM ENTERING STATE WATERS, ANY SURFACE OR SUBSURFACE STORM DRAINAGE SYSTEM OR OTHER FACILITIES.
23. NO PERSON SHALL CAUSE THE IMPEDIMENT OF STORMWATER FLOW IN THE CURB AND GUTTER OR DITCH EXCEPT WITH APPROVED SEDIMENT CONTROL MEASURES.
24. OWNER/DEVELOPER AND THEIR AGENTS SHALL COMPLY WITH THE "COLORADO WATER QUALITY CONTROL ACT" (TITLE 25, ARTICLE 8, CRS), AND THE "CLEAN WATER ACT" (33 USC 1344), IN ADDITION TO THE REQUIREMENTS OF THE LAND DEVELOPMENT CODE, DCM VOLUME II AND THE ECM APPENDIX I. ALL APPROPRIATE PERMITS MUST BE OBTAINED BY THE CONTRACTOR PRIOR TO CONSTRUCTION (1041, NPDES, FLOODPLAIN, 404, FUGITIVE DUST, ETC.), IN THE EVENT OF CONFLICTS BETWEEN THESE REQUIREMENTS AND OTHER LAWS, RULES, OR REGULATIONS OF OTHER FEDERAL, STATE, LOCAL, OR COUNTY AGENCIES, THE MOST RESTRICTIVE LAWS, RULES, OR REGULATIONS SHALL APPLY.
25. ALL CONSTRUCTION TRAFFIC MUST ENTER/EXIT THE SITE ONLY AT APPROVED CONSTRUCTION ACCESS POINTS.
26. PRIOR TO CONSTRUCTION THE PERMITTEE SHALL VERIFY THE LOCATION OF EXISTING UTILITIES.
27. A WATER SOURCE SHALL BE AVAILABLE ON SITE DURING EARTHWORK OPERATIONS AND SHALL BE UTILIZED AS REQUIRED TO MINIMIZE DUST FROM EARTHWORK EQUIPMENT AND WIND.
28. THE SOILS REPORT FOR THIS SITE (SOIL; GEOLOGY, AND GEOLOGIC HAZARD STUDY, ARACO MINOR SUBDIVISION" BY ENTECH ENGINEERING, INC., DATED JULY 25, 2018) SHALL BE CONSIDERED A PART OF THESE PLANS.
29. AT LEAST TEN (10) DAYS PRIOR TO THE ANTICIPATED START OF CONSTRUCTION, FOR PROJECTS THAT WILL DISTURB ONE (1) ACRE OR MORE, THE OWNER OR OPERATOR OF CONSTRUCTION ACTIVITY SHALL SUBMIT A PERMIT APPLICATION FOR STORMWATER DISCHARGE TO THE COLORADO DEPARTMENT OF PUBLIC HEALTH AND ENVIRONMENT, WATER QUALITY DIVISION. THE APPLICATION CONTAINS CERTIFICATION OF COMPLETION OF A STORMWATER MANAGEMENT PLAN (SMWP), OF WHICH THIS GRADING AND EROSION CONTROL PLAN MAY BE A PART. FOR INFORMATION OR APPLICATION MATERIALS CONTACT:

COLORADO DEPARTMENT OF PUBLIC HEALTH AND ENVIRONMENT
WATER QUALITY CONTROL DIVISION
WQCD - PERMITS
4300 CHERRY CREEK DRIVE SOUTH
DENVER, CO 80246-1530
ATTN: PERMITS UNIT

ESTIMATED TIME SCHEDULE:

INSTALL BMP'S MARCH, 2021
SITE GRADING MARCH, 2021
SEEDING & MULCHING AUGUST, 2021
STABILIZATION SEPTEMBER, 2022
TOTAL DISTURBED AREA: 3.4 ACRES
RECEIVING WATERS: FOUNTAIN CREEK

EXISTING VEGETATION:

NATIVE GRASSES (APPROXIMATELY 70 PERCENT COVERAGE)

SEEDING MIX:

GRASS	VARIETY	AMOUNT IN LBS. PER ACRE
CRESTED WHEAT GRASS	EPHRAIM OR HYCREST	4.0 LBS.
PERENIAL RYE	LINN	2.0 LBS.
WESTERN WHEATGRASS	SARTON	3.0 LBS.
SMOOTH BROME GRASS	LINCOLN OR MANCHAR	5.0 LBS.
SIDEOATS GRAMA	EPHRAIM	2.5 LBS.
TOTAL:		16.5 LBS.

SEEDING & FERTILIZER APPLICATION: DRILL SEED OR HYDRO-SEED PER CDOT SPEC. SECTION 212.

MULCHING APPLICATION: CONFORM TO CDOT SPEC-SECTION 213.

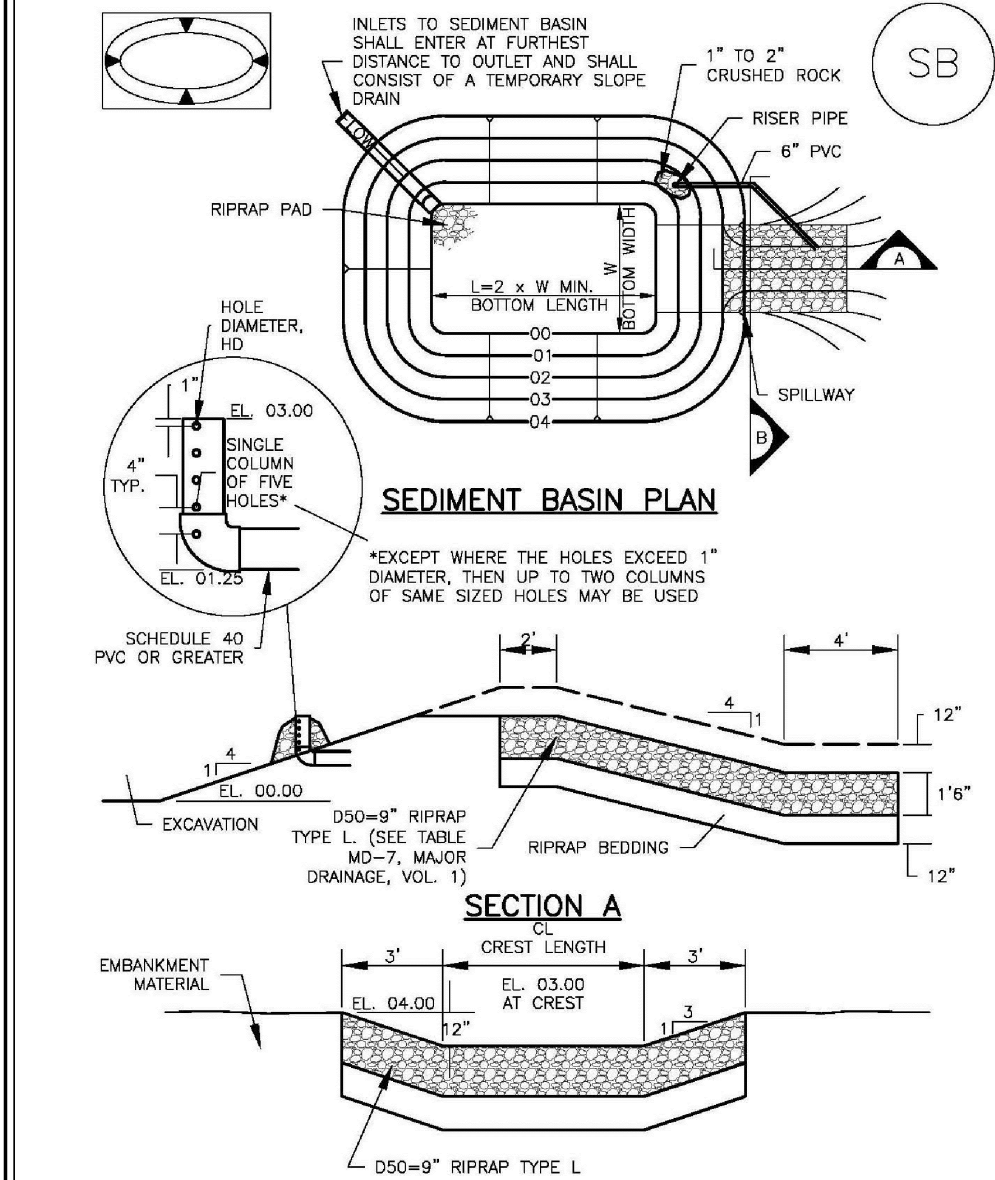
SEDIMENT CONTROL MAINTENANCE PROGRAM:

PERIODIC SITE INSPECTIONS BI-WEEKLY
RE-VEGETATION OF EXPOSED SOILS WITHIN 21 DAYS OF GRADING
SEDIMENT REMOVAL FROM BMP'S MONTHLY
REMOVAL OF BMP'S AFTER STABILIZATION ACHIEVED

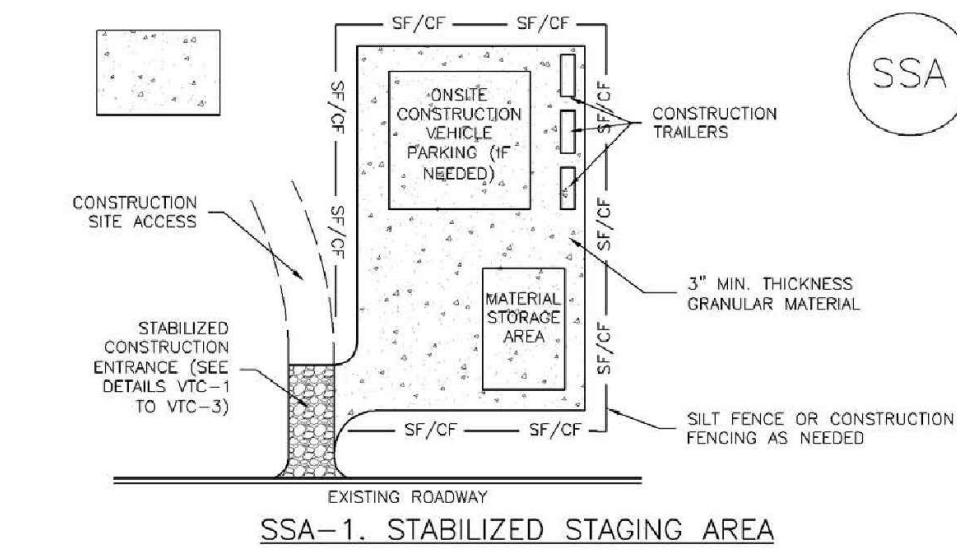
1 AND AFTER ANY PRECIPITATION OR SNOW MELT EVENT THAT CAUSES SURFACE EROSION.

2 ACCUMULATED SEDIMENT AND DEBRIS SHALL BE REMOVED WHEN THE SEDIMENT LEVEL REACHES ONE HALF THE HEIGHT OF THE BMP OR AT ANY TIME THAT SEDIMENT OR DEBRIS ADVERSELY IMPACTS THE FUNCTION OF THE BMP.

Sediment Basin (SB) SC-7



Stabilized Staging Area (SSA) SM-6



- STABILIZED STAGING AREA INSTALLATION NOTES
1. SEE PLAN VIEW FOR LOCATION OF STAGING AREA(S). CONTRACTOR MAY ADJUST LOCATION AND SIZE OF STAGING AREA WITH APPROVAL FROM THE LOCAL JURISDICTION.
 2. STABILIZED STAGING AREA SHOULD BE APPROPRIATE FOR THE NEEDS OF THE SITE. OVERSIZING RESULTS IN A LARGER AREA TO STABILIZE FOLLOWING CONSTRUCTION.
 3. STAGING AREA SHALL BE STABILIZED PRIOR TO OTHER OPERATIONS ON THE SITE.
 4. THE STABILIZED STAGING AREA SHALL CONSIST OF A MINIMUM 3\"/>
 5. UNLESS OTHERWISE SPECIFIED BY LOCAL JURISDICTION, ROCK SHALL CONSIST OF DOT SPEC #703, 48H50 #3 CORNER AGGREGATE OR 6\"/>

- STABILIZED STAGING AREA MAINTENANCE NOTES
1. INSPECT BMP'S EACH WORKDAY, AND MAINTAIN THEM IN EFFECTIVE OPERATING CONDITION. MAINTENANCE OF BMP'S SHOULD BE PROACTIVE, NOT REACTIVE. INSPECT BMP'S AS SOON AS POSSIBLE (AND ALWAYS WITHIN 24 HOURS) FOLLOWING A STORM THAT CAUSES SURFACE EROSION, AND PERFORM NECESSARY MAINTENANCE.
 2. FREQUENT OBSERVATIONS AND MAINTENANCE ARE NECESSARY TO MAINTAIN BMP'S IN EFFECTIVE OPERATING CONDITION. INSPECTIONS AND CORRECTIVE MEASURES SHOULD BE DOCUMENTED THOROUGHLY.
 3. WHERE BMP'S HAVE FAILED, REPAIR OR REPLACEMENT SHOULD BE INITIATED UPON DISCOVERY OF THE FAILURE.
 4. ROCK SHALL BE REAPPLIED OR REGRADED AS NECESSARY IF RUTTING OCCURS OR UNDERLYING SUBGRADE BECOMES EXPOSED.

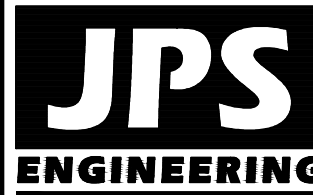
TEMPORARY SEDIMENT BASIN DESIGN DATA				
BASIN	DRAINAGE AREA (AC)	BOTTOM WIDTH (FT)	CL (FT)	HD (IN)
A1	1.5	21	3	13/16"
A2	2.3	21	3	13/16"

ARACO CONCRETE
7470 SOUTHMOOR DR., COLORADO SPRINGS, COLORADO 80817

GRADING & EROSION
CONTROL NOTES &
DETAILS

HORZ. SCALE: N/A
VERT. SCALE: N/A
SURVEYED: LDC
CREATED: 6/21/19
PROJECT NO: 111705
DRAWN: BJJ
DESIGNED: JPS
CHECKED: JPS
LAST MODIFIED: 7/25/21
MODIFIED BY: BJJ

SHEET: C2.2



19 E. Willamette Ave.
Colorado Springs, CO
80903

PH: 719-477-9429
FAX: 719-471-0766
www.jpsengr.com

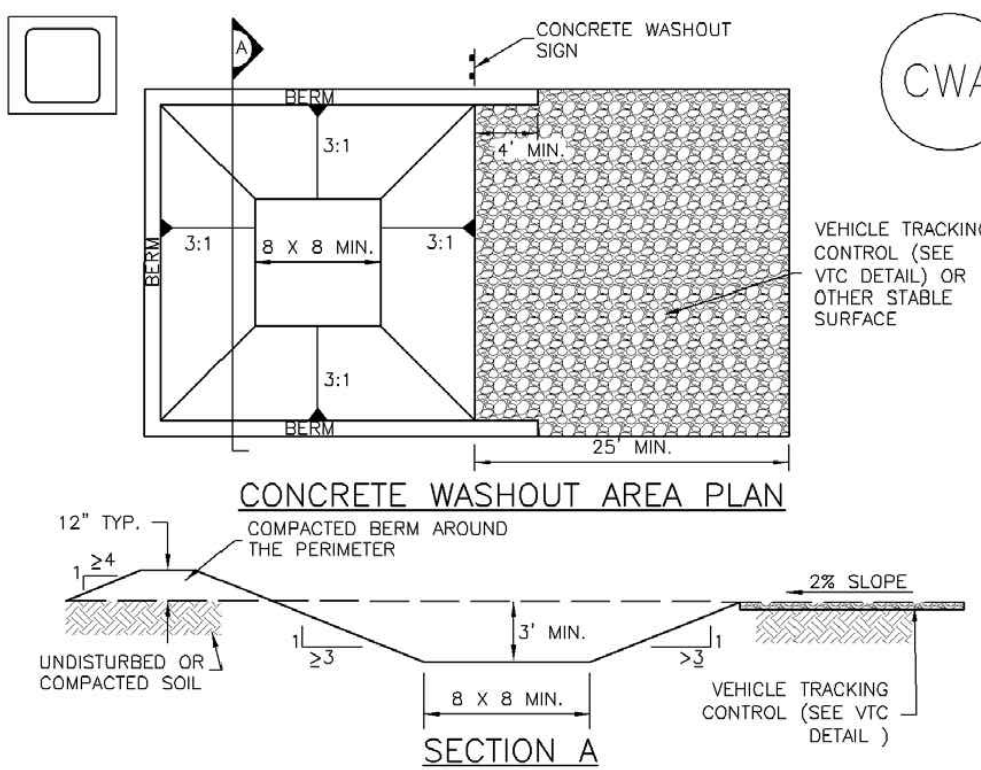


CALL UTILITY NOTIFICATION
CENTER OF COLORADO
1-800-922-1987
CALL 24 HOURS BEFORE ANY EXCAVATE
BEFORE YOU DIG, GRADE, OR EXCAVATE
FOR THE MARKING OF UNDERGROUND
MEMBER UTILITIES

BY	DATE	REVISION
JPS	10/22/19	EPC SUBMITTAL
JPS	7/22/20	COUNTY COMMENTS
JPS	1/25/21	COUNTY COMMENTS

Concrete Washout Area (CWA)

MM-1

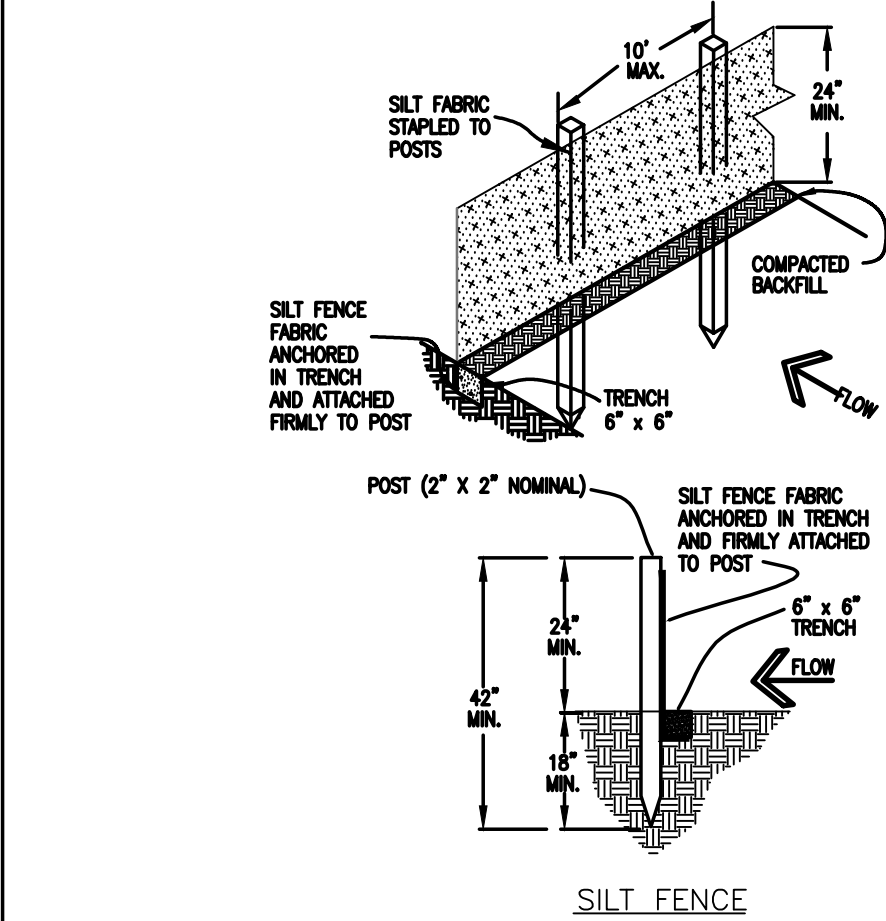


CWA-1. CONCRETE WASHOUT AREA

CWA INSTALLATION NOTES

1. SEE PLAN VIEW FOR:
-CWA INSTALLATION LOCATION.
2. DO NOT LOCATE AN UNLINED CWA WITHIN 400' OF ANY NATURAL DRAINAGE PATHWAY OR WATERBODY. DO NOT LOCATE WITHIN 1,000' OF ANY WELLS OR DRINKING WATER SOURCES. IF SITE CONSTRAINTS MAKE THIS INFEASIBLE, OR IF HIGHLY PERMEABLE SOILS EXIST ON SITE, THE CWA MUST BE INSTALLED WITH AN IMPERMEABLE LINER (16 MIL MIN. THICKNESS) OR SURFACE STORAGE ALTERNATIVES USING PREFABRICATED CONCRETE WASHOUT DEVICES OR A LINED ABOVE GROUND STORAGE ARE SHOULD BE USED.
3. THE CWA SHALL BE INSTALLED PRIOR TO CONCRETE PLACEMENT ON SITE.
4. CWA SHALL INCLUDE A FLAT SUBSURFACE PIT THAT IS AT LEAST 8' BY 8' SLOPES LEADING OUT OF THE SUBSURFACE PIT SHALL BE 3:1 OR FLATTER. THE PIT SHALL BE AT LEAST 3' DEEP.
5. BERM SURROUNDING SIDES AND BACK OF THE CWA SHALL HAVE MINIMUM HEIGHT OF 1'.
6. VEHICLE TRACKING PAD SHALL BE SLOPED 2% TOWARDS THE CWA.
7. SIGNS SHALL BE PLACED AT THE CONSTRUCTION ENTRANCE, AT THE CWA, AND ELSEWHERE AS NECESSARY TO CLEARLY INDICATE THE LOCATION OF THE CWA TO OPERATORS OF CONCRETE TRUCKS AND PUMP RIGS.
8. USE EXCAVATED MATERIAL FOR PERIMETER BERM CONSTRUCTION.

November 2010 Urban Drainage and Flood Control District
Urban Storm Drainage Criteria Manual Volume 3 CWA-3



SILT FENCE NOTES

INSTALLATION REQUIREMENTS

1. SILT FENCES SHALL BE INSTALLED PRIOR TO ANY LAND DISTURBING ACTIVITIES.
2. WHEN JOINTS ARE NECESSARY, SILT FENCE GEOTEXTILE SHALL BE SPLICED TOGETHER ONLY AT SUPPORT POST AND SECURELY SEALED.
3. METAL POSTS SHALL BE "STUDDED TEE" OR "U" TYPE WITH MINIMUM HEIGHT OF 1.33 POUNDS PER LINEAR FOOT. WOOD POSTS SHALL HAVE A MINIMUM DIAMETER OR CROSS SECTION DIMENSION OF 2 INCHES.
4. THE FILTER MATERIAL SHALL BE FASTENED SECURELY TO METAL OR WOOD POSTS USING WIRE TIES, OR TO WOOD POSTS WITH 3/4" LONG #9 HEAVY-DUTY STAPLES. THE SILT FENCE GEOTEXTILE SHALL NOT BE STAPLED TO EXISTING TREES.
5. WHILE NOT REQUIRED, WIRE MESH FENCE MAY BE USED TO SUPPORT THE GEOTEXTILE. WIRE FENCE SHALL BE FASTENED SECURELY TO THE UPSLOPE SIDE OF THE POSTS USING HEAVY-DUTY WIRE STAPLES AT LEAST 3/4" LONG. THE WIRES OR HOG RINGS. THE WIRE SHALL EXTEND INTO THE TRENCH A MINIMUM OF 6" AND SHALL NOT EXTEND MORE THAN 3" ABOVE THE ORIGINAL GROUND SURFACE.

6. ALONG THE TOE OF FILLS, INSTALL THE SILT FENCE ALONG A LEVEL CONTOUR AND PROVIDE AN AREA BEHIND THE FENCE FOR RUNOFF TO POND AND SEDIMENT TO SETTLE. A MINIMUM DISTANCE OF 5 FEET FROM THE TOE OF THE FILL IS RECOMMENDED.
7. THE HEIGHT OF THE SILT FENCE FROM THE GROUND SURFACE SHALL BE MINIMUM OF 24 INCHES AND SHALL NOT EXCEED 36 INCHES. HIGHER FENCES MAY IMPOUND VOLUMES OF WATER SUFFICIENT TO CAUSE FAILURE OF THE STRUCTURE.

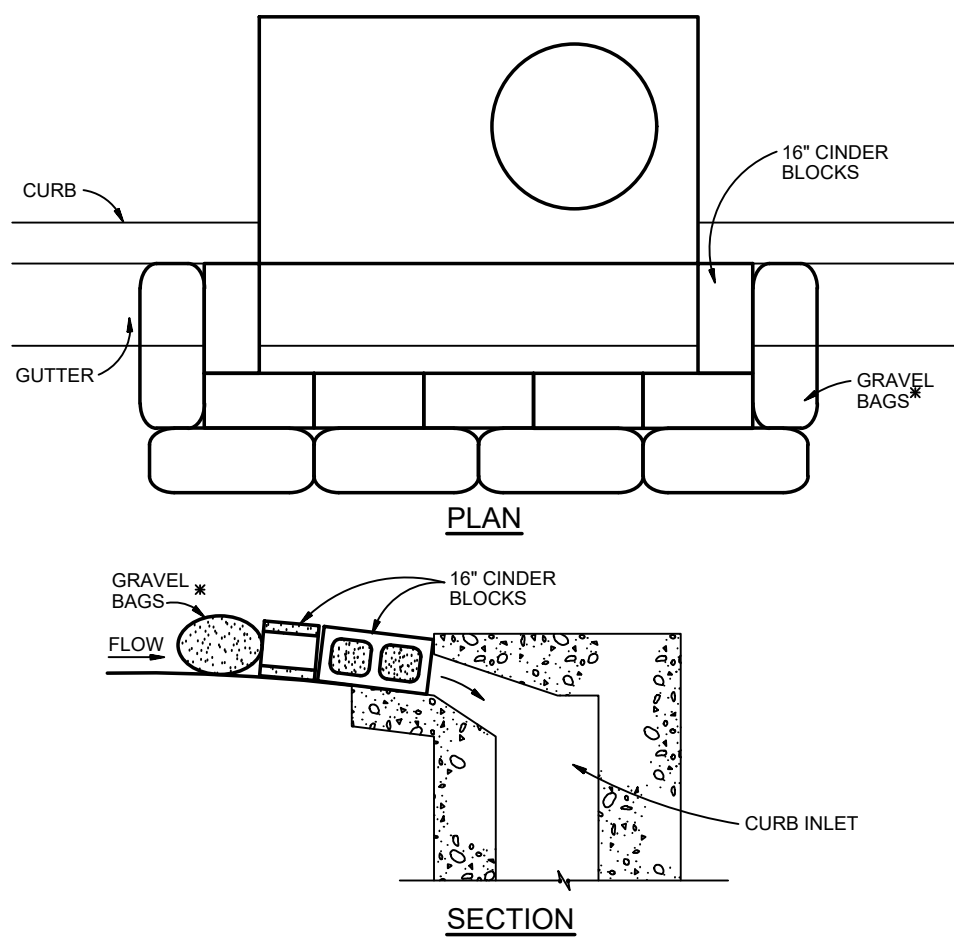
MAINTENANCE REQUIREMENTS

1. CONTRACTOR SHALL INSPECT SILT FENCES IMMEDIATELY AFTER EACH RAINFALL, AT LEAST DAILY DURING PROLONGED RAINFALL, AND WEEKLY DURING PERIODS OF NO RAINFALL. DAMAGED, COLLAPSED, UNENTRENCHED OR INEFFECTIVE SILT FENCES SHALL BE PROMPTLY REPAIRED OR REPLACED.
2. SEDIMENT SHALL BE REMOVED FROM BEHIND SILT FENCE WHEN IT ACCUMULATES TO HALF THE EXPOSED GEOTEXTILE HEIGHT.
3. SILT FENCES SHALL BE REMOVED WHEN ADEQUATE VEGETATIVE COVER IS ATTAINED AS APPROVED BY THE CITY.

City of Colorado Springs
Stormwater Quality

Figure SF-2
Silt Fence
Construction Detail and Maintenance
Requirements

3-36



BLOCK AND GRAVEL BAG CURB INLET PROTECTION

BLOCK AND GRAVEL BAG CURB INLET PROTECTION NOTES

INSTALLATION REQUIREMENTS

1. INLET PROTECTION SHALL BE INSTALLED IMMEDIATELY AFTER CONSTRUCTION OF INLET.
2. CONCRETE BLOCKS ARE TO BE LAID AROUND THE INLET IN A SINGLE ROW ON THEIR SIDES, ABUTTING ONE ANOTHER WITH THE OPEN ENDS OF THE BLOCK FACING OUTWARD.
3. GRAVEL BAGS ARE TO BE PLACED AROUND THE CONCRETE BLOCKS CLOSELY ABUTTING ONE ANOTHER SO THERE ARE NO GAPS.
4. GRAVEL BAGS ARE TO CONTAIN WASHED SAND OR GRAVEL APPROXIMATELY 3/4 INCH IN DIAMETER.
5. BAGS ARE TO BE MADE OF 1/4" INCH WIRE MESH (USED WITH GRAVEL ONLY) OR GEOTEXTILE.

- AN ALTERNATE 3/4" TO 1" GRAVEL FILTER OVER A WIRE SCREEN MAY BE USED IN PLACE OF GRAVEL BAGS. THE WIRE MESH SHALL EXTEND ABOVE THE TOP OF THE CONCRETE BLOCKS AND THE GRAVEL PLACED OVER THE WIRE SCREEN TO THE TOP OF THE CONCRETE BLOCKS.

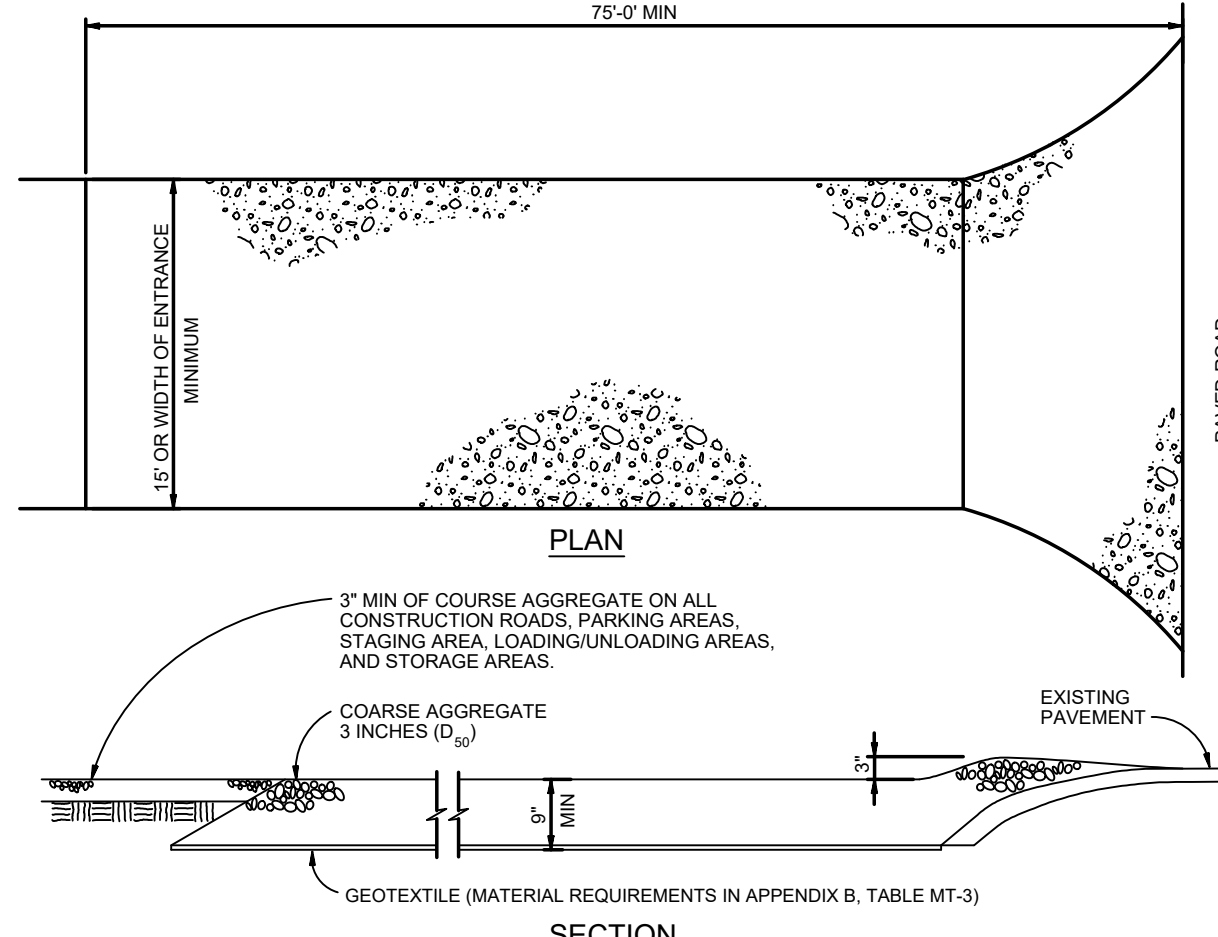
MAINTENANCE REQUIREMENTS

1. CONTRACTOR SHALL INSPECT INLET PROTECTION IMMEDIATELY AFTER EACH RAINFALL, AT LEAST DAILY DURING PROLONGED RAINFALL, AND WEEKLY DURING PERIODS NO RAINFALL.
2. DAMAGED OR INEFFECTIVE INLET PROTECTION SHALL PROMPTLY BE REPAIRED OR REPLACED.
3. SEDIMENT SHALL BE REMOVED WHEN SEDIMENT HAS ACCUMULATED TO APPROXIMATELY 1/2 THE DESIGN DEPTH OF THE TRAP.
4. INLET PROTECTION SHALL BE REMOVED WHEN ADEQUATE VEGETATIVE COVER IS ATTAINED WITHIN THE DRAINAGE AREA AS APPROVED BY THE CITY.

City of Colorado Springs
Stormwater Quality

Figure IP-3
Block & Gravel Bag Curb Inlet Protection
Construction Detail and Maintenance
Requirements

3-27



VEHICLE TRACKING

VEHICLE TRACKING NOTES

INSTALLATION REQUIREMENTS

1. ALL ENTRANCES TO THE CONSTRUCTION SITE ARE TO BE STABILIZED PRIOR TO CONSTRUCTION BEGINNING.
2. CONSTRUCTION ENTRANCES ARE TO BE BUILT WITH AN APRON TO ALLOW FOR TURNING TRAFFIC, BUT SHOULD NOT BE BUILT OVER EXISTING PAVEMENT EXCEPT FOR A SLIGHT OVERLAP.
3. AREAS TO BE STABILIZED ARE TO BE PROPERLY GRADED AND COMPACTED PRIOR TO LAYING DOWN GEOTEXTILE AND STONE.
4. CONSTRUCTION ROADS, PARKING AREAS, LOADING/UNLOADING ZONES, STORAGE AREAS, AND STAGING AREAS ARE TO BE STABILIZED.
5. CONSTRUCTION ROADS ARE TO BE BUILT TO CONFORM TO SITE GRADES, BUT SHOULD NOT HAVE SIDE SLOPES OR ROAD GRADES THAT ARE EXCESSIVELY STEEP.

MAINTENANCE REQUIREMENTS

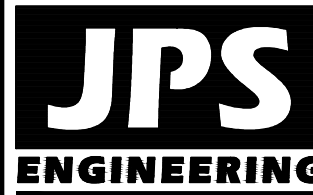
1. REGULAR INSPECTIONS ARE TO BE MADE OF ALL STABILIZED AREAS, ESPECIALLY AFTER STORM EVENTS.
2. STONES ARE TO BE REPLACED PERIODICALLY AND WHEN REPAIR IS NECESSARY.
3. SEDIMENT TRACKED ONTO PAVED ROADS IS TO BE REMOVED DAILY BY SHOVELING OR SWEEPING. SEDIMENT IS NOT TO BE WASHED DOWN STORM SEWER DRAINS.
4. STORM SEWER INLET PROTECTION IS TO BE IN PLACE, INSPECTED, AND CLEANED IF NECESSARY.
5. OTHER ASSOCIATED SEDIMENT CONTROL MEASURES ARE TO BE INSPECTED TO ENSURE GOOD WORKING CONDITION.

City of Colorado Springs
Stormwater Quality

Figure VT-2
Vehicle Tracking
Application Examples

3-54

ARACO CONCRETE
7470 SOUTHMOOR DR., COLORADO SPRINGS, COLORADO 80817



19 E. Willamette Ave.
Colorado Springs, CO
80903

PH: 719-477-9429
FAX: 719-471-0766
www.jpsengr.com



CALL UTILITY NOTIFICATION
CENTER OF COLORADO
1-800-922-1987
CALL OR SIGN POSTS IN ADVANCE
BEFORE YOU DIG, GRADE, OR EXCAVATE
FOR THE MARKING OF UNDERGROUND
MEMBER UTILITIES

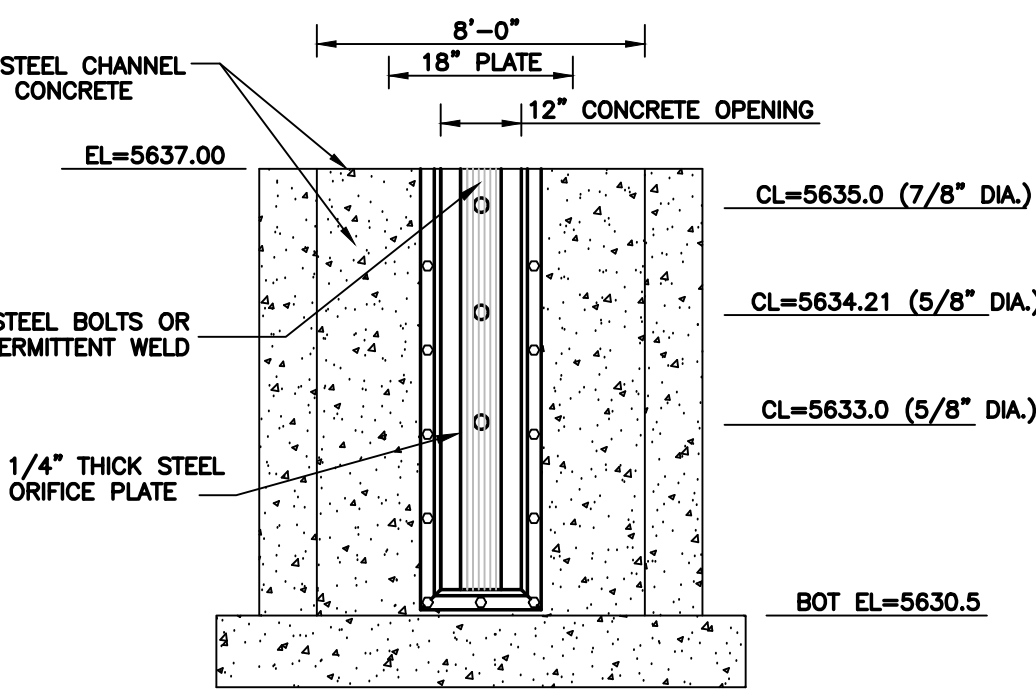
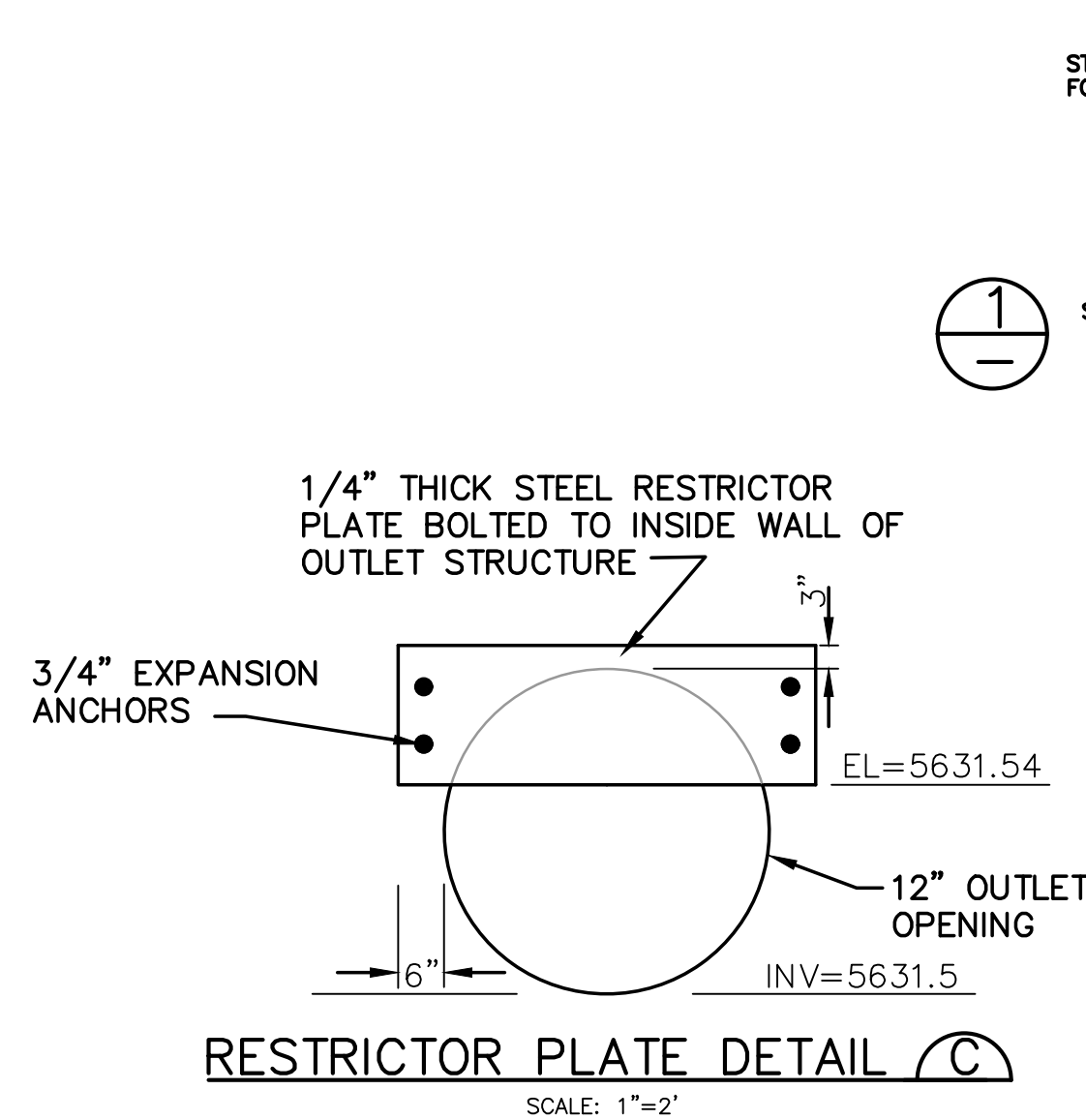
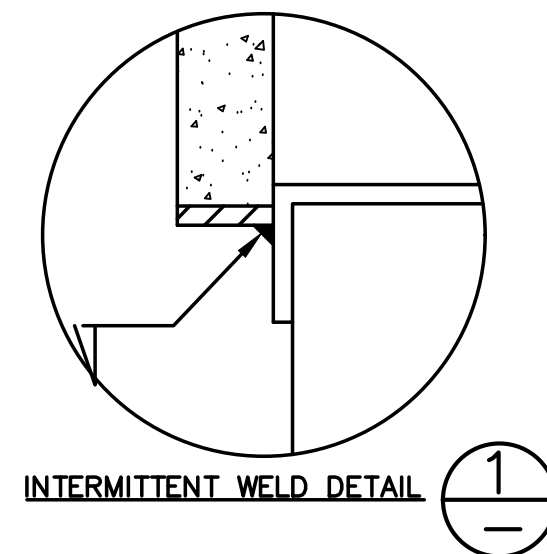
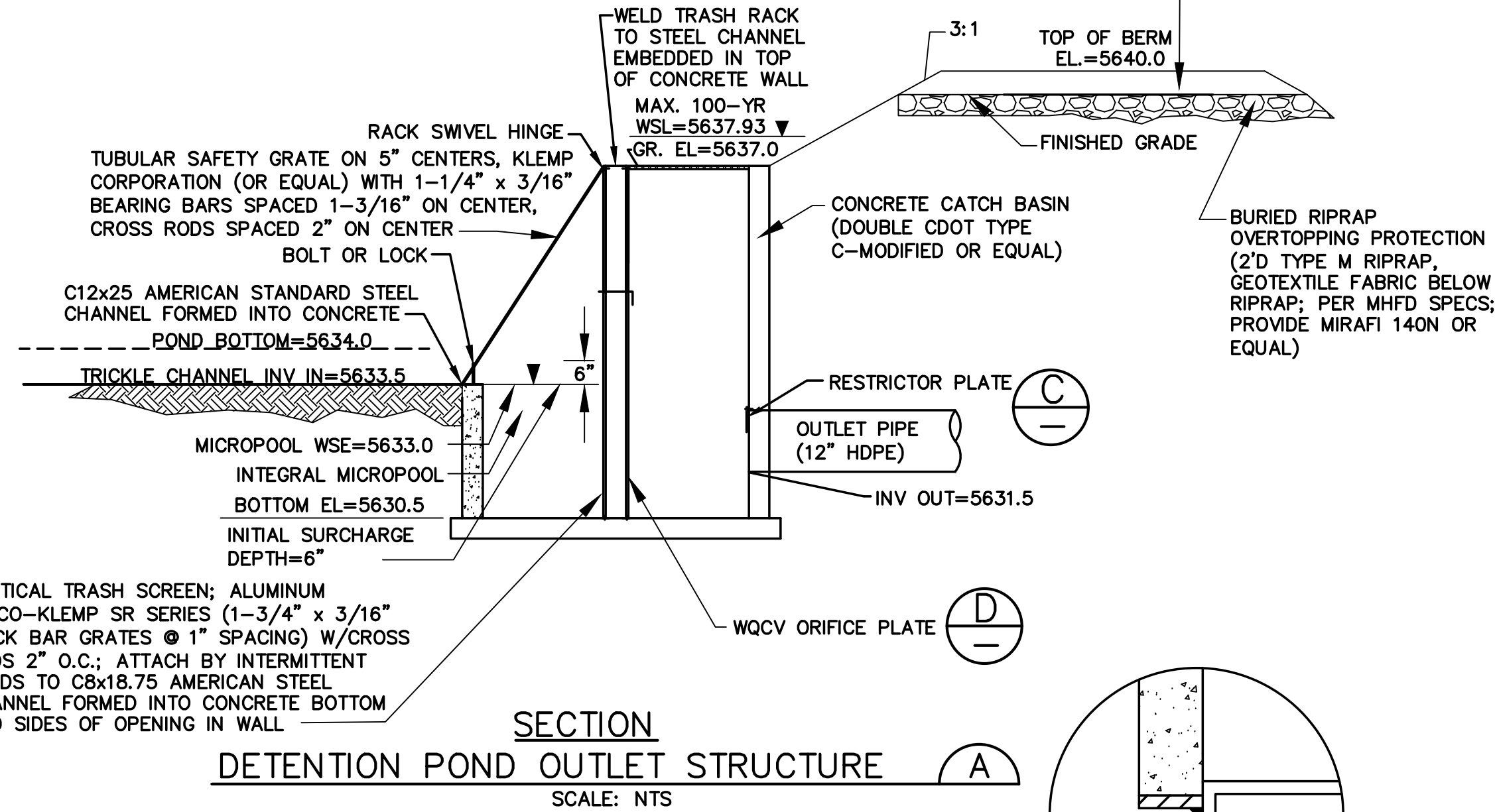
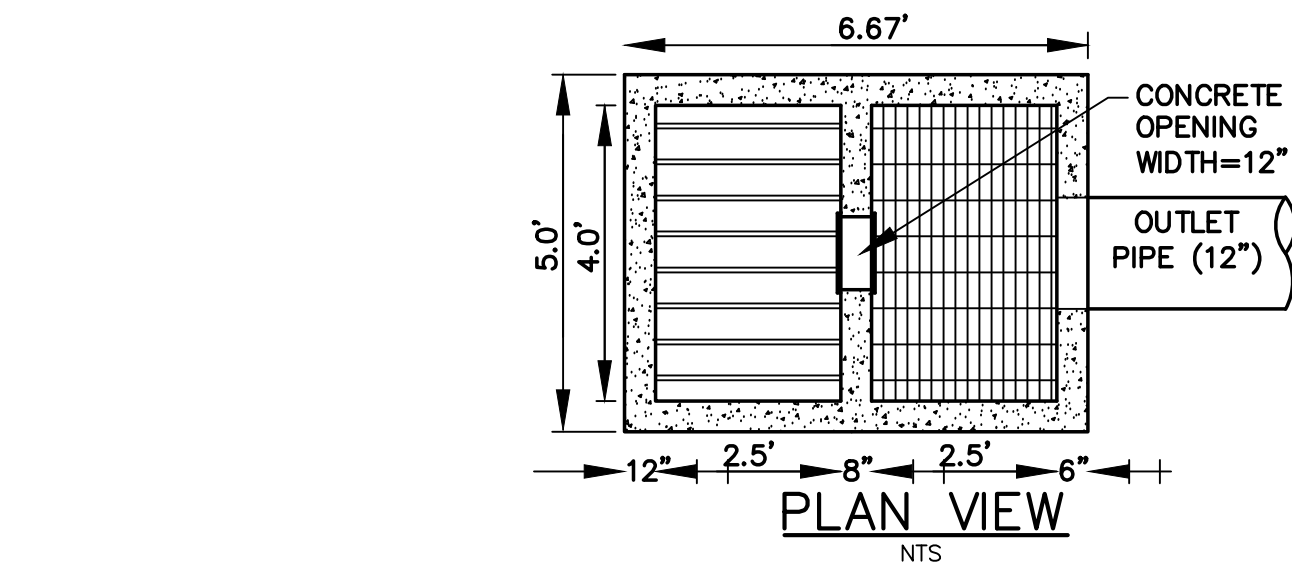
No.	REVISION	BY	DATE

EROSION CONTROL
DETAILS

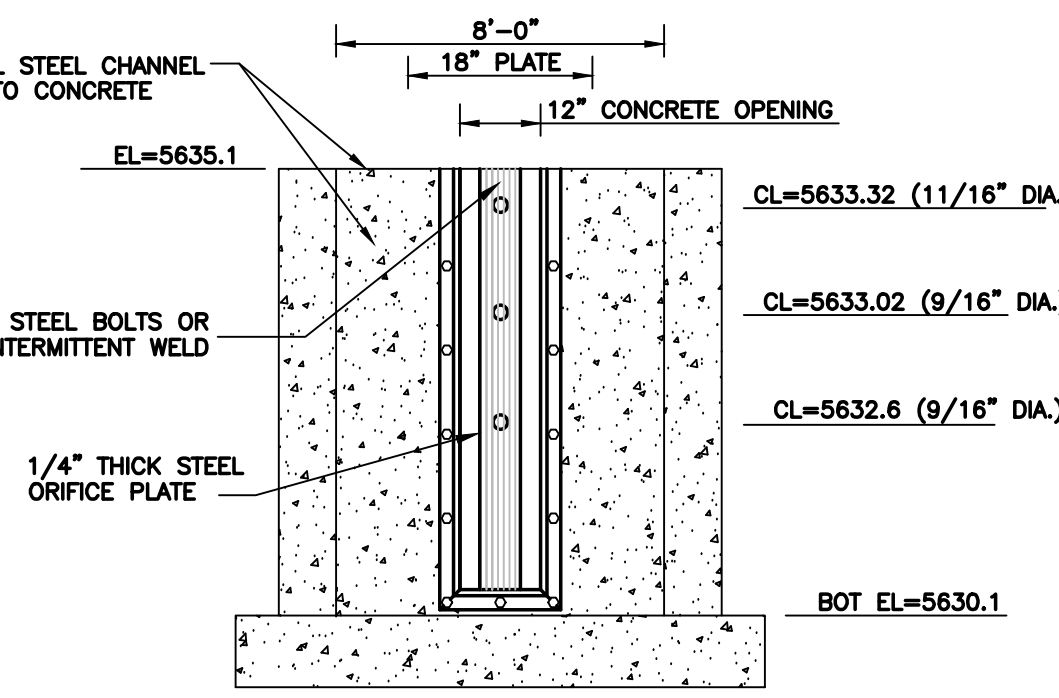
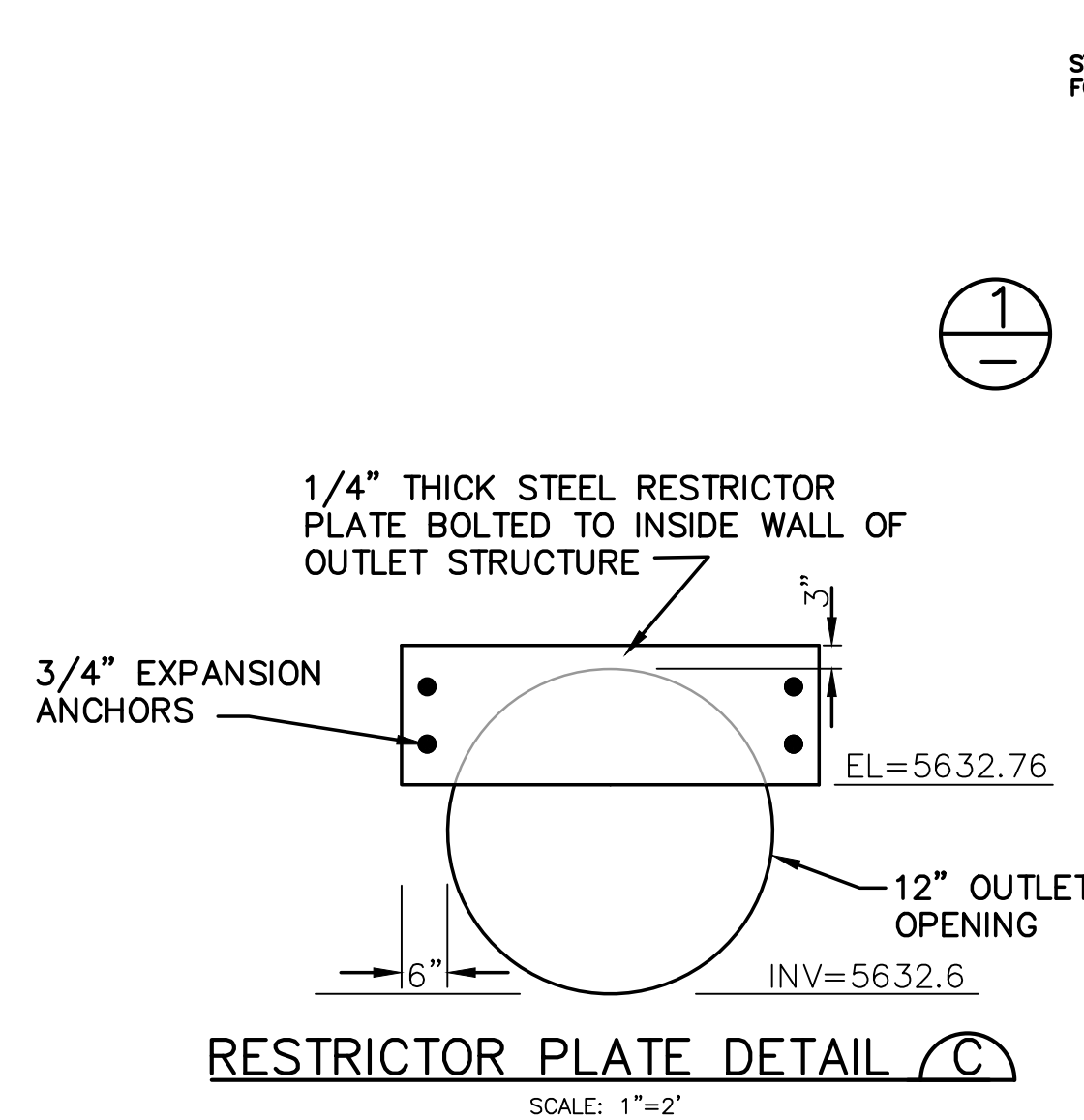
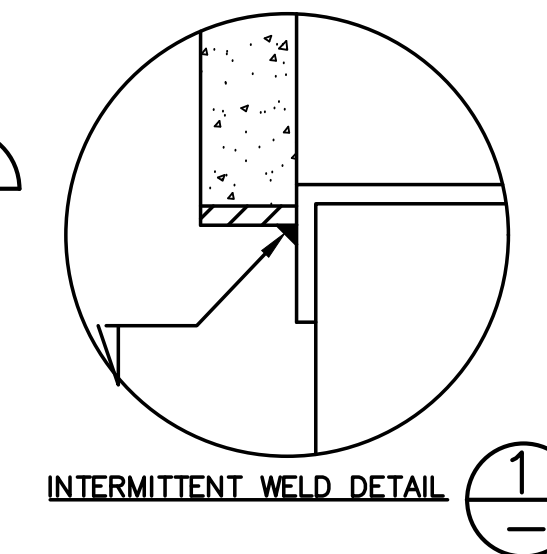
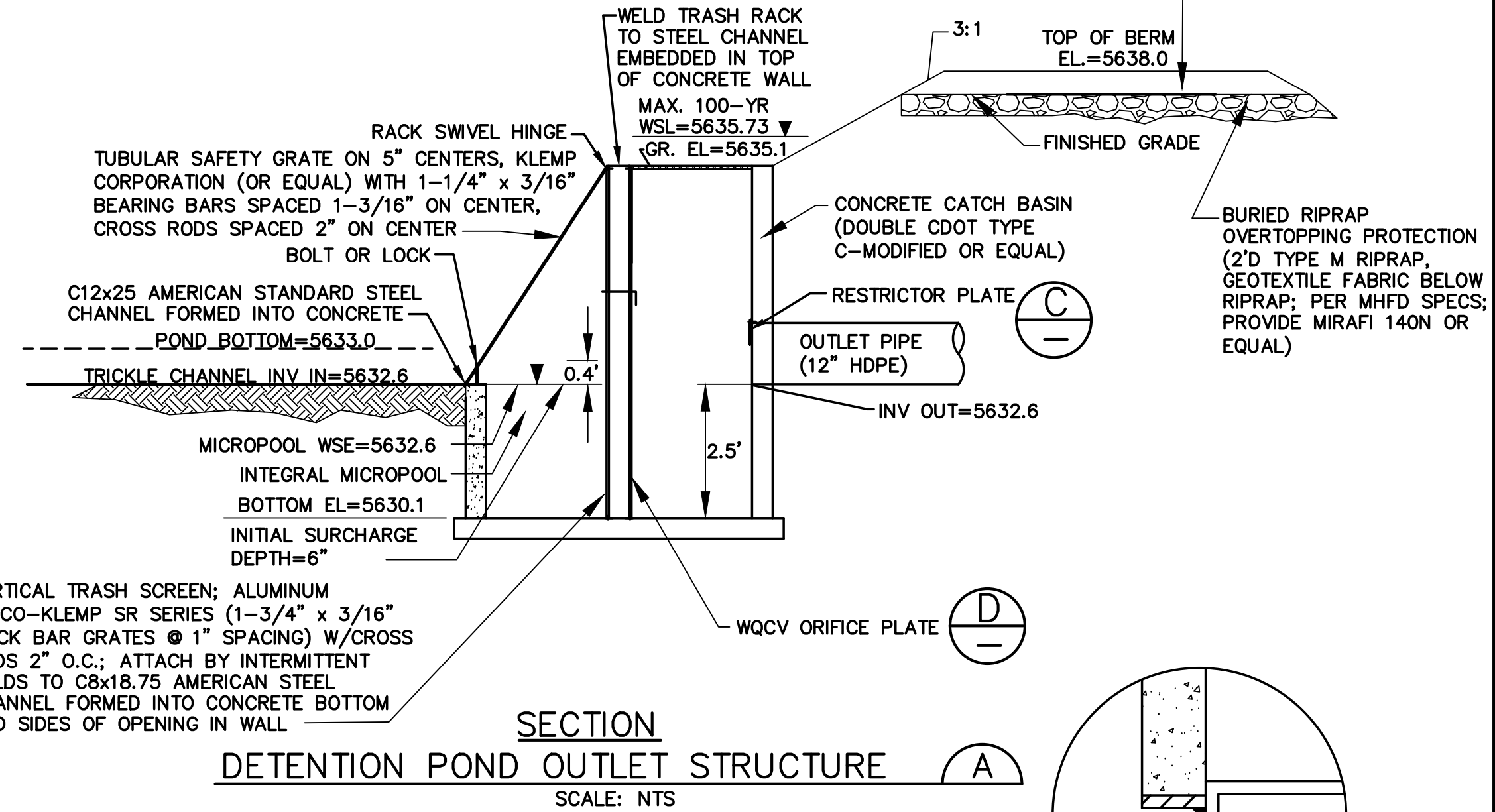
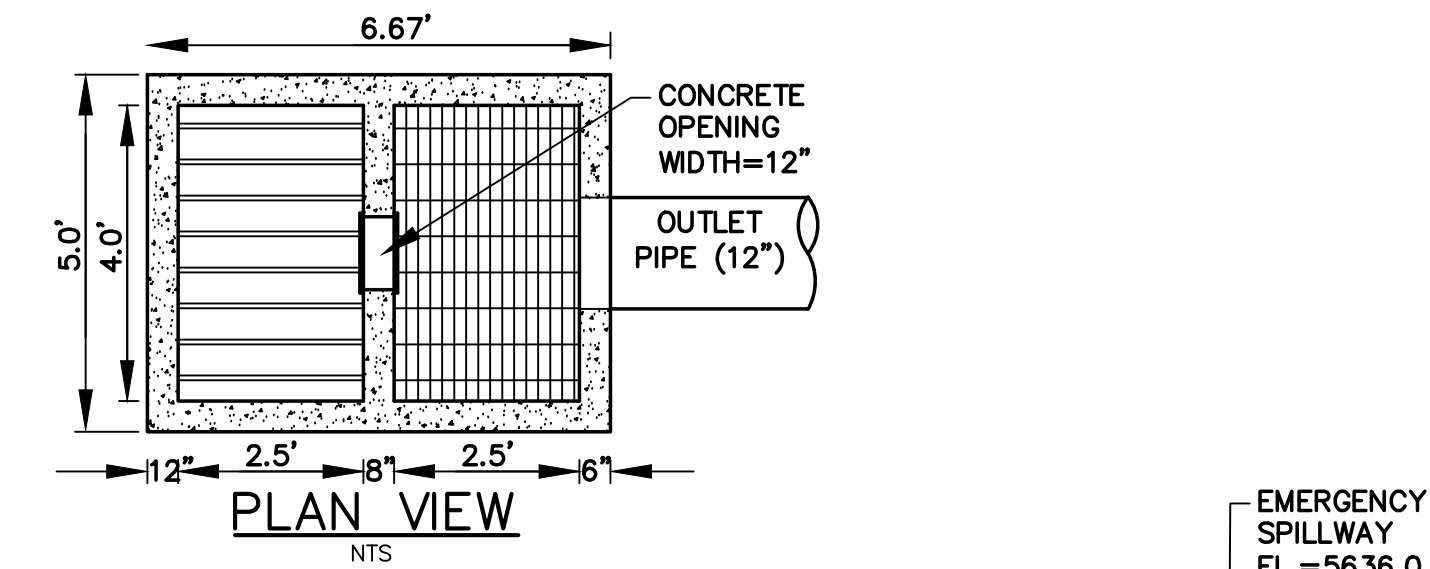
HORIZ. SCALE:	N/A	DRAWN:	BJJ
VERT. SCALE:	N/A	DESIGNED:	JPS
SURVEYED:	LDC	CHECKED:	JPS
CREATED:	4/30/20	LAST MODIFIED:	7/22/21
PROJECT NO:	111705	MODIFIED BY:	BJJ

SHEET:
C2.3

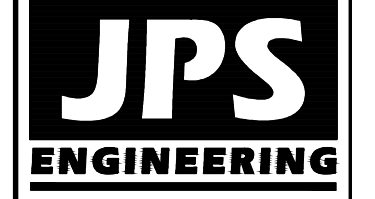
G:\Users\Owner\Dropbox\psprojects\111705.araco\dwg\civil\C3.1.dwg Jan 23, 2021 -- 9:40am



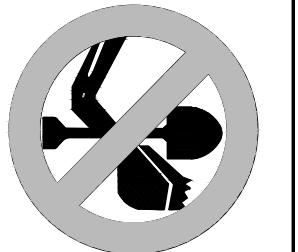
DETENTION BASIN A1 DETAILS



DETENTION BASIN A2 DETAILS



19 E. Willamette Ave.
Colorado Springs, CO
80903
PH: 719-477-9429
FAX: 719-471-0766
www.jpsengr.com



CALL UTILITY NOTIFICATION
CENTER OF COLORADO
1-800-922-1987
CALL BEFORE YOU DIG
BEFORE YOU DIG GRADE, OR EXCAVATE
FOR THE MARKING OF UNDERGROUND
MEMBER UTILITIES

No.	REVISION	BY	DATE

ARACO CONCRETE
7470 SOUTHMOOR DR., COLORADO SPRINGS, COLORADO 80817

DETENTION BASIN
DETAILS

HORZ. SCALE:	N/A	DRAWN:	BJJ
VERT. SCALE:	N/A	DESIGNED:	JPS
SURVEYED:	LDC	CHECKED:	JPS
CREATED:	7/22/20	LAST MODIFIED:	7/23/21
PROJECT NO:	111705	MODIFIED BY:	BJJ
SHEET:	C3.1		