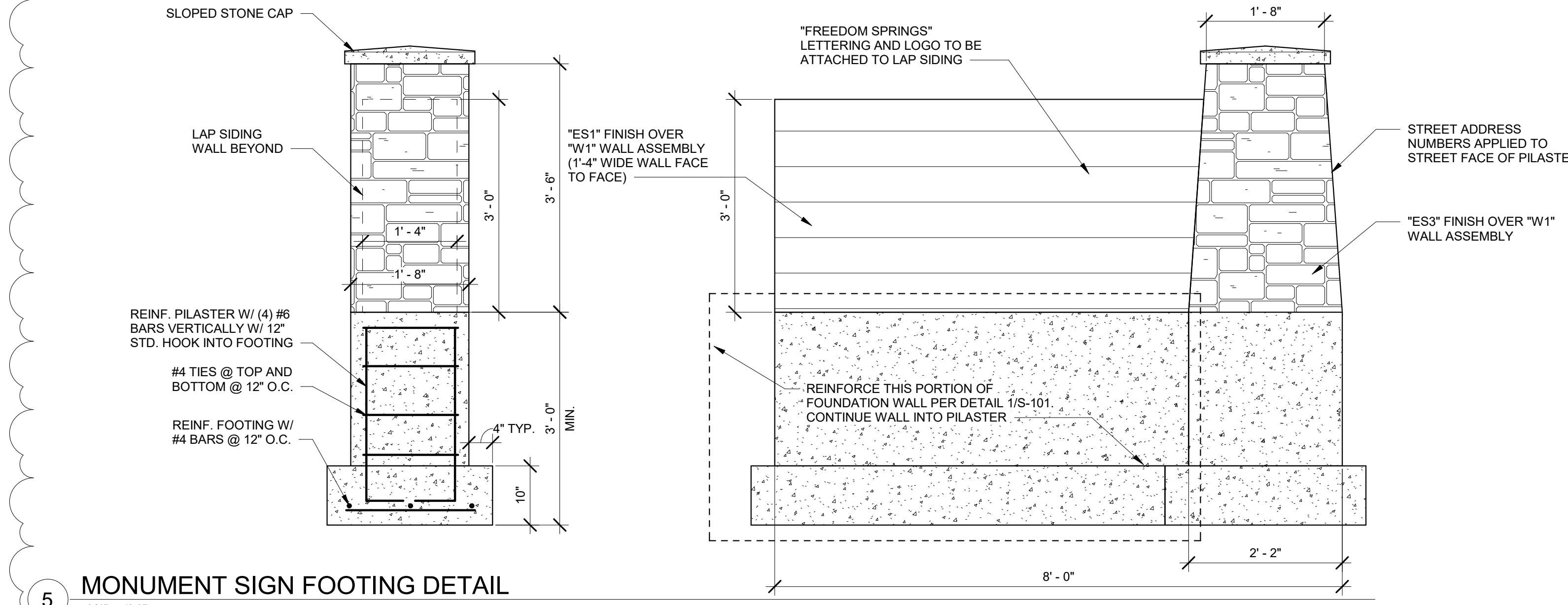


NOTE: GUARDRAILS SHALL BE DESIGNED AND CONSTRUCTED TO RESIST A LINEAR LOAD OF 50 PLF AND A CONCENTRATED LOAD OF 200 POUNDS IN ACCORDANCE WITH SECTION 4.5.1 OF ASCE 7. INTERMEDIATE RAILS AND BALUSTERS SHALL BE DESIGNED AND CONSTRUCTED TO RESIST A CONCENTRATED LOAD OF 50 POUNDS IN ACCORDANCE WITH SECTION 4.5.1 OF ASCE 7.

STEEL GUARDRAIL COMPONENTS SHALL HAVE AN EXTERIOR-GRADE POWDERCOAT FINISH. COLOR TO BE SELECTED BY ARCHITECT.

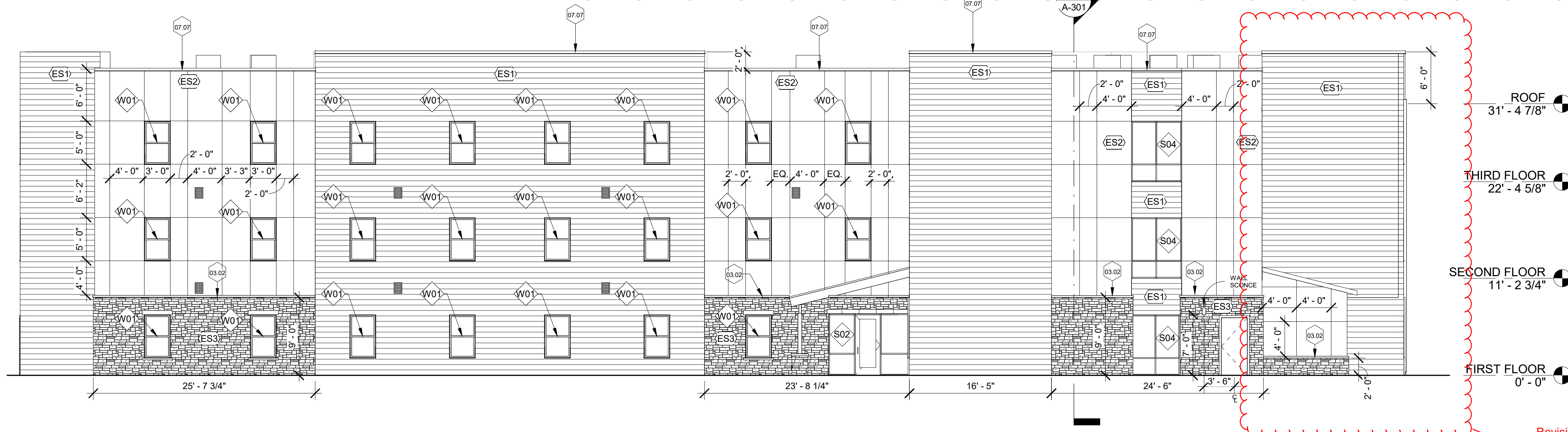
1 GUARDRAIL ELEVATION

1" = 1'-0"



5 MONUMENT SIGN FOOTING DETAIL

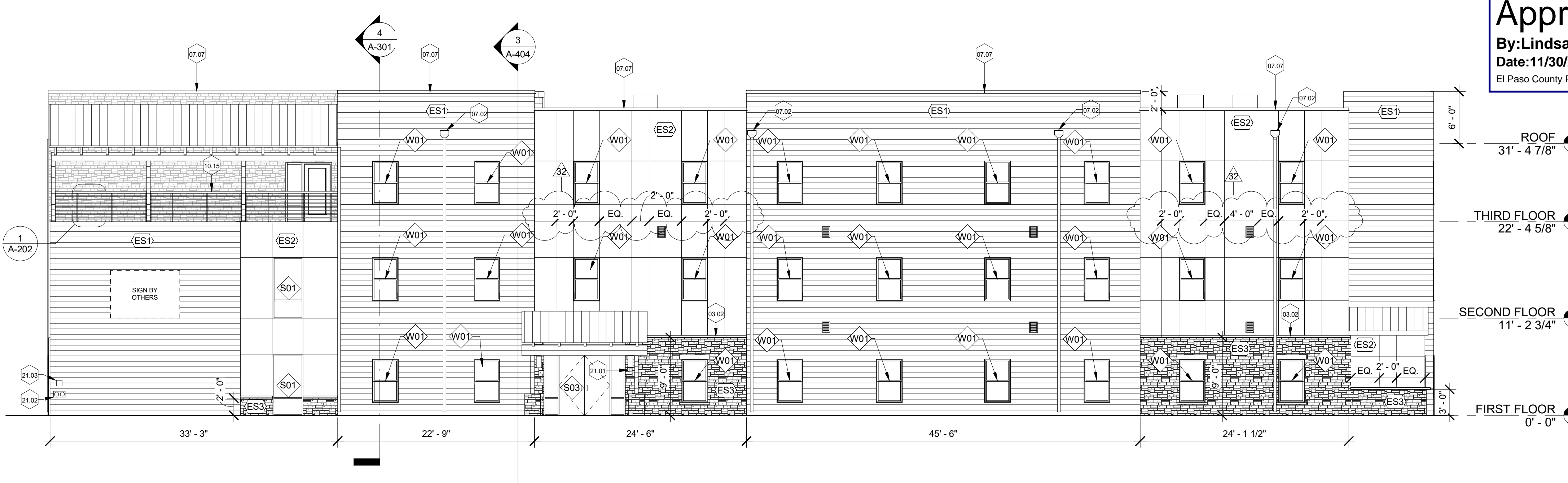
3/4" = 1'-0"



2 WEST ELEVATION

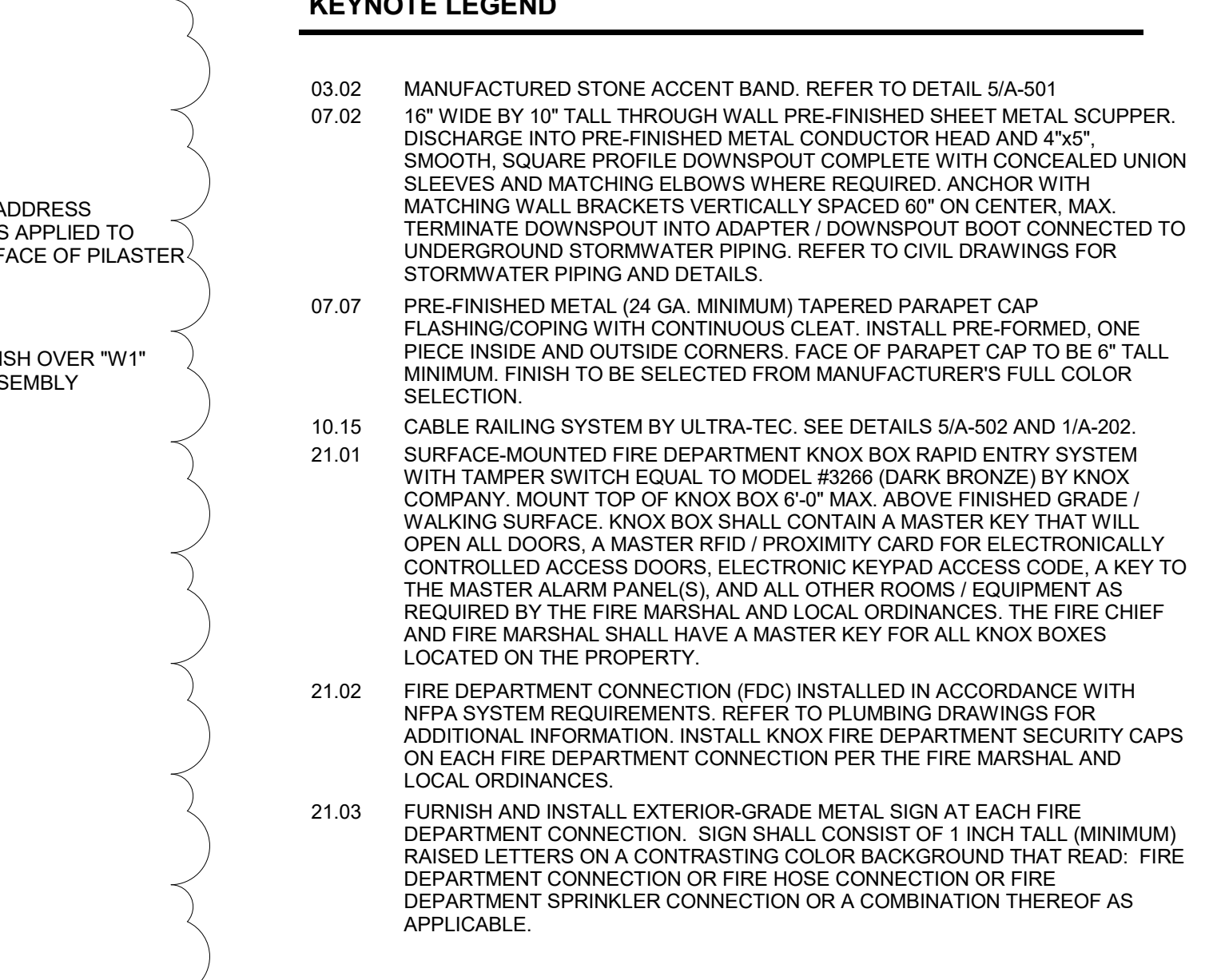
1/8" = 1'-0"

Revision to west elevation facade material.



3 EAST ELEVATION

1/8" = 1'-0"



4 MAIN ENTRANCE ELEVATION

1/4" = 1'-0"

KEYNOTE LEGEND

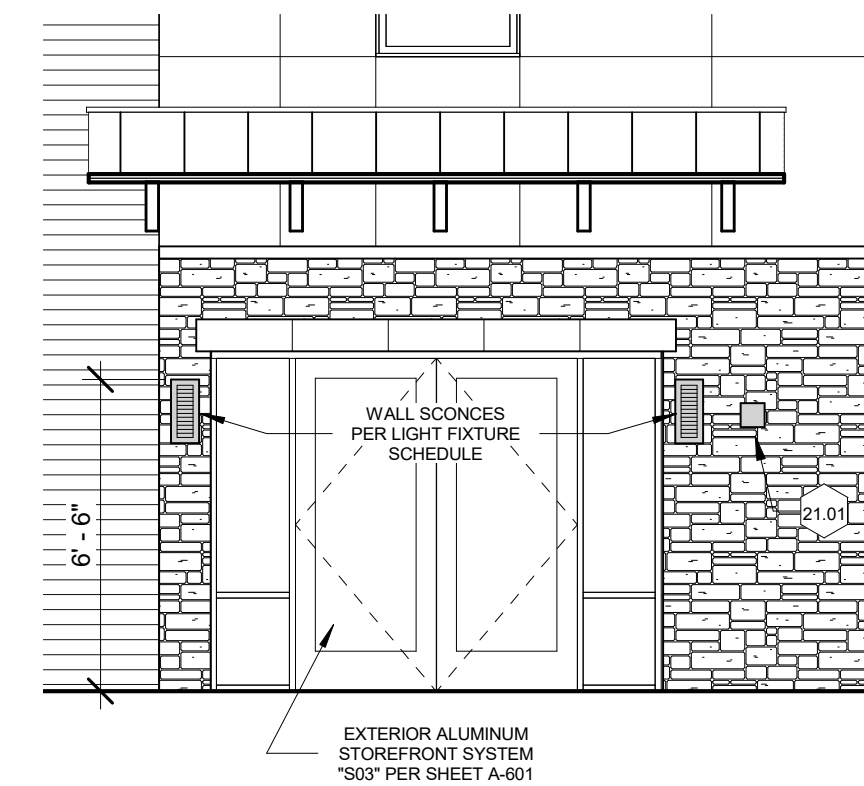
- 03.02 MANUFACTURED STONE ACCENT BAND. REFER TO DETAIL 5/A-501
- 07.02 16" WIDE BY 10" TALL THROUGH WALL PRE-FINISHED SHEET METAL SCUPPER. DISCHARGE INTO PRE-FINISHED METAL CONDUCTOR HEAD AND 4"x5" SMOOTH, SQUARE PROFILE DOWNSPOUT COMPLETE WITH CONCEALED UNION SLEEVES AND MATCHING ELBOWS WHERE REQUIRED. ANCHOR WITH MATCHING WALL BRACKETS VERTICALLY SPACED 60" ON CENTER. MAX. TERMINATE DOWNSPOUT INTO ADAPTER BOOT CONNECTED TO UNDERGROUND STORMWATER PIPING. REFER TO CIVIL DRAWINGS FOR STORMWATER PIPING AND DETAILS.
- 07.07 PRE-FINISHED METAL (24 GA. MINIMUM) TAPERED PARAPET CAP FLASHING/COPING WITH CONTINUOUS CLEAT. INSTALL PRE-FORMED, ONE PIECE INSIDE AND OUTSIDE CORNERS. FACE OF PARAPET CAP TO BE 6" TALL MINIMUM. FINISH TO BE SELECTED FROM MANUFACTURER'S FULL COLOR SELECTION.
- 10.15 CABLE RAILING SYSTEM BY ULTRA-TEC. SEE DETAILS 5/A-502 AND 1/A-202.
- 21.01 SURFACE-MOUNTED FIRE DEPARTMENT KNOX BOX RAPID ENTRY SYSTEM WITH TAMPER SWITCH EQUAL TO MODEL #3266 (DARK BRONZE) BY KNOX COMPANY. MOUNT TOP OF KNOX BOX 6'-0" MAX. ABOVE FINISHED GRADE / WALKING SURFACE. KNOX BOX SHALL CONTAIN A MASTER KEY THAT WILL OPEN ALL DOORS, A MASTER RFID / PROXIMITY CARD FOR ELECTRONICALLY CONTROLLED ACCESS DOORS, ELECTRONIC KEYPAD ACCESS CODE, A KEY TO THE MASTER ALARM PANEL(S), AND ALL OTHER ROOMS / EQUIPMENT AS REQUIRED BY THE FIRE MARSHAL AND LOCAL ORDINANCES. THE FIRE CHIEF AND FIRE MARSHAL SHALL HAVE A MASTER KEY FOR ALL KNOX BOXES LOCATED ON THE PROPERTY.
- 21.02 FIRE DEPARTMENT CONNECTION (FDC) INSTALLED IN ACCORDANCE WITH NFPA SYSTEM REQUIREMENTS. REFER TO PLUMBING DRAWINGS FOR ADDITIONAL INFORMATION. INSTALL KNOX FIRE DEPARTMENT SECURITY CAPS ON EACH FIRE DEPARTMENT CONNECTION PER THE FIRE MARSHAL AND LOCAL ORDINANCES.
- 21.03 FURNISH AND INSTALL EXTERIOR-GRADE METAL SIGN AT EACH FIRE DEPARTMENT CONNECTION. SIGN SHALL CONSIST OF 1 INCH TALL (MINIMUM) RAISED LETTERS ON A CONTRASTING COLOR BACKGROUND THAT READ: FIRE DEPARTMENT CONNECTION OR FIRE HOSE CONNECTION OR FIRE DEPARTMENT SPRINKLER CONNECTION OR A COMBINATION THEREOF AS APPLICABLE.

GENERAL EXTERIOR SIDING NOTES

1. FOLLOW THE MANUFACTURER'S WRITTEN INSTALLATION INSTRUCTIONS FOR FIBER CEMENT BOARD HORIZONTAL LAP SIDING AND VERTICAL PANEL SIDING.
2. AT HORIZONTAL FIBER CEMENT LAP SIDING, USE DOUBLE HOT DIPPED GALVANIZED OR STAINLESS STEEL BLIND FASTENERS PER THE MANUFACTURER'S WRITTEN INSTALLATION INSTRUCTIONS.
3. AT VERTICAL ARCHITECTURAL FIBER CEMENT BOARD PANELS, USE MANUFACTURER'S RECOMMENDED FASTENERS WITH COLOR-MATCHED FASTENER HEADS.
4. HOLD BACK FIBER CEMENT BOARD SIDING 6" MINIMUM ABOVE FINISHED GRADE.
5. LEAVE AN 1/8" GAP BETWEEN SIDING AND TRIM SURROUNDING DOORS AND WINDOWS.
6. USE NON-CORROSIVE, COATED ALUMINUM OR METAL FLASHINGS THAT WILL NOT REACT WHEN IN CONTACT WITH FIBER CEMENT SIDING PRODUCTS.
7. MAINTAIN 1/4" CLEARANCE BETWEEN SIDING AND HORIZONTAL FLASHINGS. DO NOT CAULK GAP ABOVE HORIZONTAL Z-FLASHING OVER DOOR AND WINDOW OPENINGS.
8. USE NON-CORROSIVE BACKFLASHING AT ALL BUTT JOINTS.
9. USE HIGH QUALITY, PAINTABLE OR COLOR-MATCHED, EXTERIOR-GRADE SEALANT THAT MEETS ASTM C-920 AND IS COMPATIBLE WITH FIBER CEMENT SIDING PRODUCT(S).
10. INSTALL HORIZONTAL FIBER CEMENT LAP SIDINGS AND VERTICAL ARCHITECTURAL FIBER CEMENT BOARD PANELS COMPLETE WITH FIBER CEMENT ALUMINUM REVEAL TRIM SYSTEM EQUAL TO EASY TRIM REVEALS. INSTALL VERTICAL TRANSITION TRIM AT LAP SIDINGS AND VERTICAL FIBER CEMENT BOARD PANELS INCLUDING INSIDE & OUTSIDE CORNERS (SQUARE EDGE), Z-TRIMS, AND J-TRIMS. INSTALL VERTICAL AND HORIZONTAL REVEALS AT ARCHITECTURAL FIBER CEMENT BOARD PANELS - REFER TO BUILDING ELEVATIONS FOR LOCATIONS. FIBER CEMENT ALUMINUM REVEAL TRIM SYSTEM FINISHES TO BE SELECTED BY ARCHITECT FROM MANUFACTURER'S FULL PRODUCT RANGE.
11. EXHAUST VENTS PER MEP DRAWINGS.

EXTERIOR SIDING LEGEND

- (ES1) 5/16" THICK BY 9.25" WIDE (8" EXPOSURE) FIBER CEMENT BOARD HORIZONTAL LAP SIDING WITH CEDAR WOOD GRAIN TEXTURE AND FACTORY APPLIED STAIN FINISH SYSTEM (TO BE SELECTED FROM THE MANUFACTURER'S FULL RANGE). REFER TO OVERALL FLOOR PLANS FOR EXTERIOR WALL TYPES AND REQUIREMENTS.
- (ES2) 5/16" THICK SMOOTH ARCHITECTURAL FIBER CEMENT BOARD VERTICAL PANEL SIDING WITH FACTORY APPLIED PRIMER AND FINISH SYSTEM (TO BE SELECTED FROM THE MANUFACTURER'S FULL COLOR RANGE). REFER TO OVERALL FLOOR PLANS FOR EXTERIOR WALL TYPES AND REQUIREMENTS.
- (ES3) MANUFACTURED STONE VENEER EQUAL TO BORAL USA CULTURED STONE COLLECTION. STONE TO BE SELECTED FROM THE MANUFACTURER'S FULL LEDGESTONE COLLECTION. PROVIDE AND INSTALL CULTURED STONE MANUFACTURER'S ACCESSORY WINDOW LINTELS, WATERTABLE/SILLS, STONE VENEER ELECTRICAL BOXES, AND PIER CAPS AT COLUMN WRAPS.



VECINO DESIGN
305 W. Commercial St., Springfield MO 65803
417-720-1577 | www.vecinogroup.com

Corporate Entity No. 20181126152

CONSULTANTS

Structural Engineer
HODA ENGINEERING, INC.
545 E. Pikes Peak Ave. Ste 100
Colorado Springs, CO 80903
Phone: (719) 528-7784
[khorrig@hodaengineering.com]

Landscape Architect
JWLA LLC
Jon C. Walsh, RLA
P.O. Box 354
Palmer Lake, Colorado 80133
Ph: 719.640.9428
jwalandarch@gmail.com

Civil Engineer
M.V.E., Inc.
1933 Lullwater Street, Suite 200
Colorado Springs, Colorado 80909
Ph: 719.635.5736
mvre@mevcivil.com

Land Planning and Surveying
Land Development Consultants, Inc.
3888 Woodland Road
Colorado Springs, CO 80909
Ph: (719) 528-6133, Ext: 109
dhostetter@ldc-inc.com

FREEDOM SPRINGS
734 WESTERN DRIVE
COLORADO SPRINGS, EL PASO COUNTY,
COLORADO 80915

| REVISION | DESCRIPTION | DATE |
|----------------------|-------------|----------|
| PERMIT SET | | 03-05-18 |
| ADDENDUM #1 | | 04-19-18 |
| ADDENDUM #2 | | 10-26-18 |
| ADDENDUM #3 | | 11-02-18 |
| ADDENDUM #4 | | 11-06-18 |
| ADDENDUM #5 | | 01-14-19 |
| CHANGE DIRECTIVE #1 | | 04-12-19 |
| CHANGE DIRECTIVE #4 | | 08-09-19 |
| CHANGE DIRECTIVE #5 | | 09-04-19 |
| CHANGE DIRECTIVE #7 | | 09-11-19 |
| CHANGE DIRECTIVE #9 | | 10-11-19 |
| CHANGE DIRECTIVE #10 | | 10-28-19 |
| CHANGE DIRECTIVE #11 | | 11-26-19 |
| S.I. #1 | | 11-26-19 |
| CHANGE DIRECTIVE #13 | | 11-26-19 |
| CHANGE DIRECTIVE #14 | | 12-09-19 |
| CHANGE DIRECTIVE #16 | | 12-19-19 |
| CHANGE DIRECTIVE #17 | | 01-07-20 |
| CHANGE DIRECTIVE #18 | | 01-31-20 |
| S.I. #4 | | 02-14-20 |
| CCD #20 | | 04-23-20 |
| CCD #22 | | 05-12-20 |
| S.I. #6 | | 09-15-20 |

This drawing and the details on it are the sole property of the Architect and may be used for this specific project only. All drawings, instruments, or other documents not bearing this seal shall not be considered prepared by the Architect and the Architect expressly disclaims any and all responsibility for such work, drawings, or documents not bearing this seal.



The Professional Architect's seal affixed to this sheet applies only to the material and items shown on this sheet. All drawings, instruments, or other documents not bearing this seal shall not be considered prepared by the Architect and the Architect expressly disclaims any and all responsibility for such work, drawings, or documents not bearing this seal.

DATE: MARCH 5, 2019
PROJECT NUMBER: 17150
DRAWN BY:
COPYRIGHT: © 2018 VECINO DESIGN

ELEVATIONS
A-202