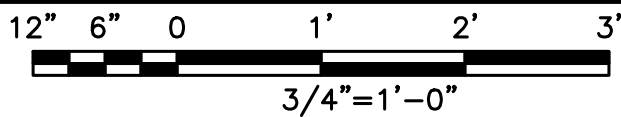
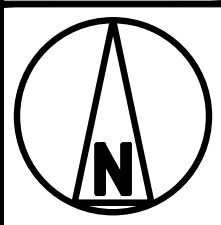
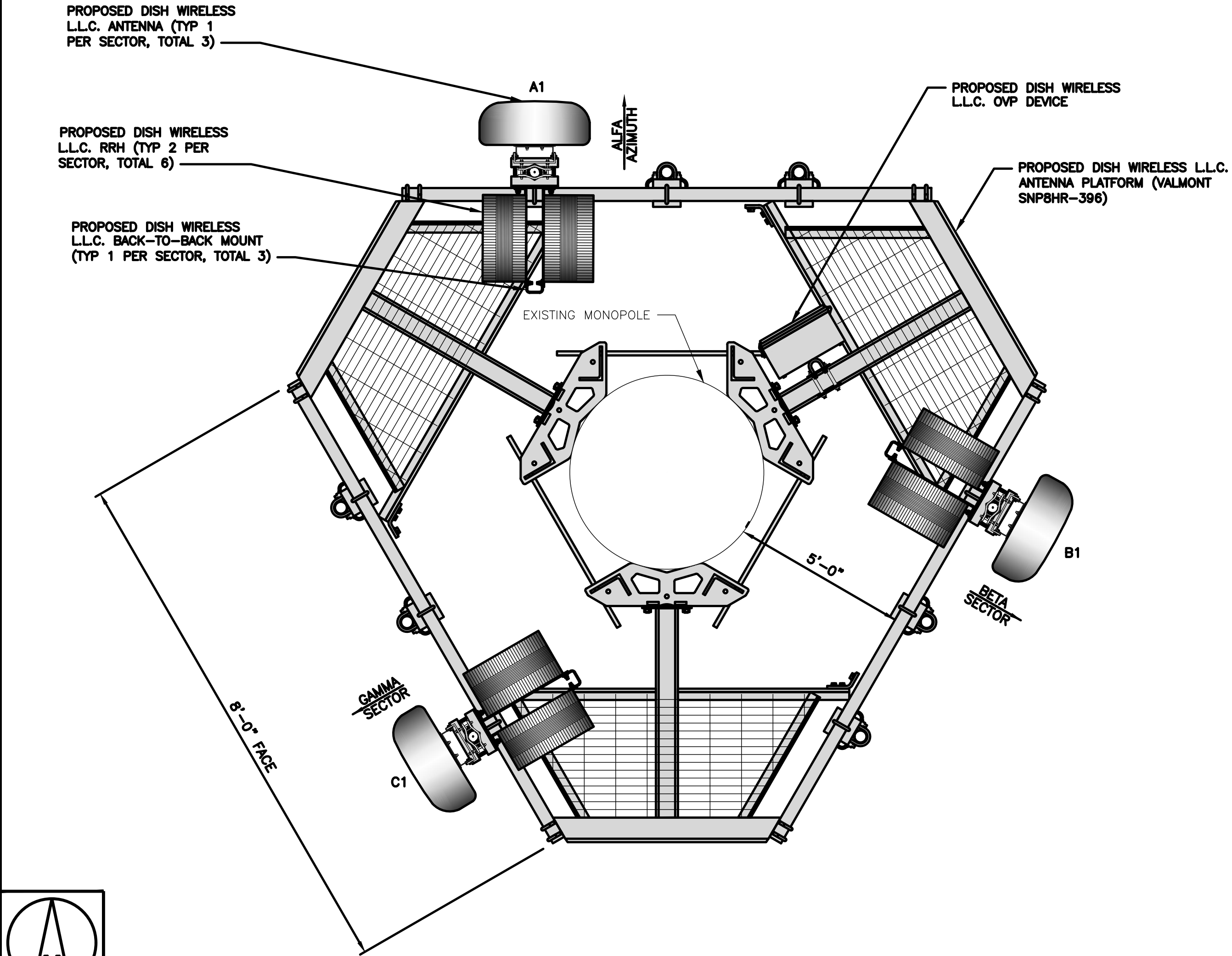
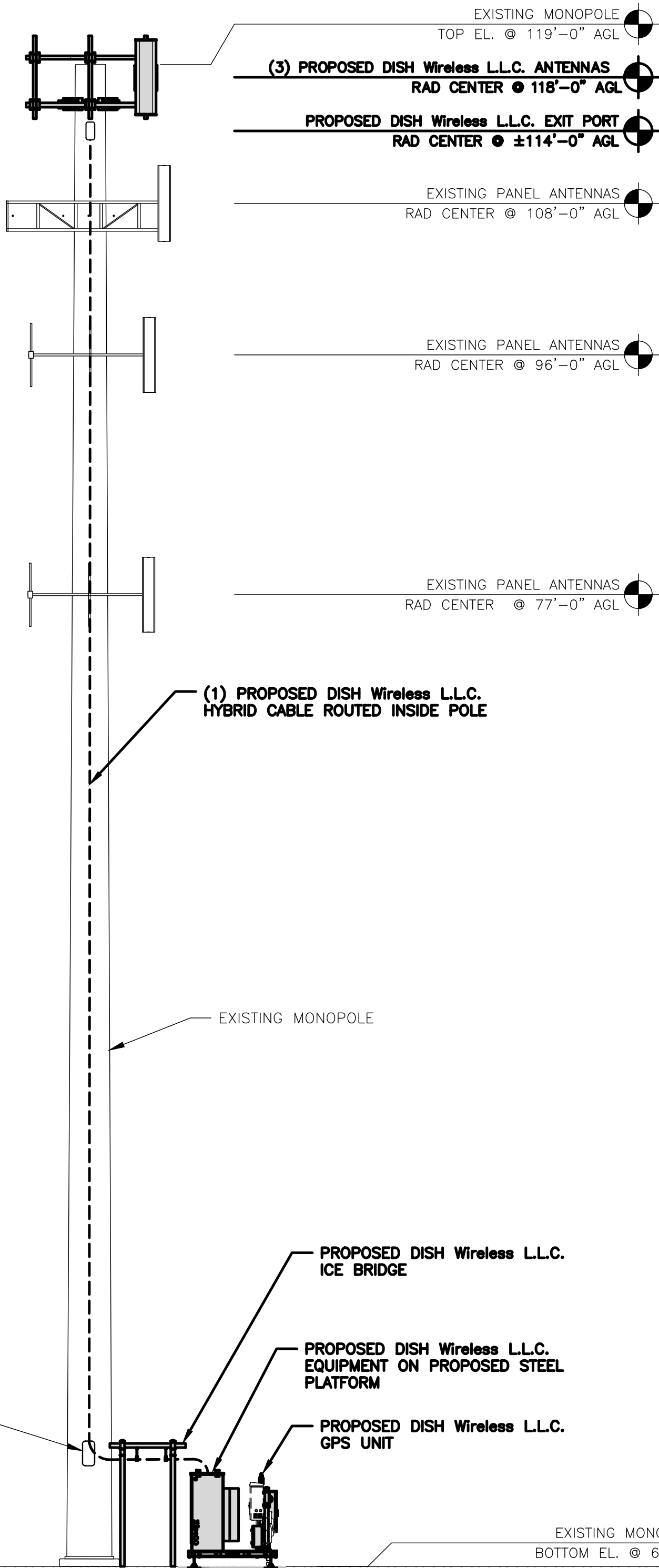


- NOTES
1. CONTRACTOR SHALL FIELD VERIFY ALL DIMENSIONS.

2. ANTENNA AND MW DISH SPECIFICATIONS REFER TO ANTENNA SCHEDULE AND TO FINAL CONSTRUCTION RFDS FOR ALL RF DETAILS

3. EXISTING EQUIPMENT AND FENCE OMITTED FOR CLARITY.

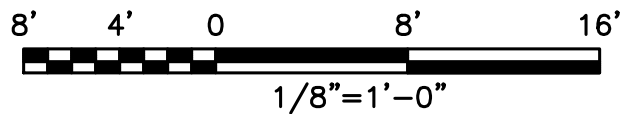
4. INFINIGY HAS NOT EVALUATED THE TOWER OR MOUNT STRUCTURE AND ASSUMES NO RESPONSIBILITY FOR THEIR STRUCTURAL INTEGRITY REGARDING PROPOSED LOADINGS. FINAL INSTALLATION SHALL COMPLY WITH RESULTS OF PASSING STRUCTURAL ANALYSES PERFORMED BY OTHERS.



SECTOR	POSITION	ANTENNA						TRANSMISSION CABLE FEED LINE TYPE AND LENGTH
		EXISTING OR PROPOSED	MANUFACTURER - MODEL NUMBER	TECHNOLOGY	SIZE (HxW)	AZMUTH	RAD CENTER	
ALPHA	A1	PROPOSED	JMA WIRELESS - MX08FRO665-21	5G	72.0" x 20.0"	0°	118'-0"	(1) HIGH-CAPACITY HYBRID CABLE (150' LONG)
BETA	B1	PROPOSED	JMA WIRELESS - MX08FRO665-21	5G	72.0" x 20.0"	120°	118'-0"	
GAMMA	C1	PROPOSED	JMA WIRELESS - MX08FRO665-21	5G	72.0" x 20.0"	240°	118'-0"	

SECTOR	POSITION	RRH		NOTES
		MANUFACTURER - MODEL NUMBER	TECHNOLOGY	
ALPHA	A1	FUJITSU TA08025-B605	5G	1. CONTRACTOR TO REFER TO FINAL CONSTRUCTION RFDS FOR ALL RF DETAILS. 2. ANTENNA AND RRH MODELS MAY CHANGE DUE TO EQUIPMENT AVAILABILITY. ALL EQUIPMENT CHANGES MUST BE APPROVED AND REMAIN IN COMPLIANCE WITH THE PROPOSED DESIGN AND STRUCTURAL ANALYSES.
	A1	FUJITSU TA08025-B604	5G	
BETA	B1	FUJITSU TA08025-B605	5G	
	B1	FUJITSU TA08025-B604	5G	
GAMMA	C1	FUJITSU TA08025-B605	5G	
	C1	FUJITSU TA08025-B604	5G	

PROPOSED NORTH ELEVATION



1

ANTENNA SCHEDULE

NO SCALE

3



5701 SOUTH SANTA FE DRIVE
LITTLETON, CO 80120



INFINIGY
FROM ZERO TO INFINIGY
the solutions are endless
BELLEVUE, WA
www.infinigy.com



IT IS A VIOLATION OF LAW FOR ANY PERSON, UNLESS THEY ARE ACTING UNDER THE DIRECTION OF A LICENSED PROFESSIONAL ENGINEER, TO ALTER THIS DOCUMENT.

DRAWN BY: CHECKED BY: APPROVED BY:

MN PP CW

RFDS REV #: 0

CONSTRUCTION DOCUMENTS

SUBMITTALS		
REV	DATE	DESCRIPTION
A	07/16/2021	ISSUED FOR REVIEW
0	08/26/2021	ISSUED FOR CONSTRUCTION

A&E PROJECT NUMBER

4009-Z5555-C

DISH Wireless L.L.C.
PROJECT INFORMATION

DNDEN00072A
515 WIDEFIELD DRIVE
COLORADO SPRINGS, CO
80911

SHEET TITLE
ELEVATION, ANTENNA
LAYOUT AND SCHEDULE

SHEET NUMBER

A-2