

STANDARD CONSTRUCTION NOTES:

- ALL DRAINAGE AND ROADWAY CONSTRUCTION SHALL MEET THE STANDARDS AND SPECIFICATIONS OF THE CITY OF COLORADO SPRINGS/EL PASO COUNTY DRAINAGE CRITERIA MANUAL, VOLUMES 1 AND 2, AND THE EL PASO COUNTY ENGINEERING CRITERIA MANUAL.
- CONTRACTOR SHALL BE RESPONSIBLE FOR THE NOTIFICATION AND FIELD LOCATION OF ALL EXISTING UTILITIES, WHETHER SHOWN ON THE PLANS OR NOT, BEFORE BEGINNING CONSTRUCTION. LOCATION OF EXISTING UTILITIES SHALL BE VERIFIED BY THE CONTRACTOR PRIOR TO CONSTRUCTION. CALL 811 TO CONTACT THE UTILITY NOTIFICATION CENTER OF COLORADO (UNCC).
- CONTRACTOR SHALL KEEP A COPY OF THESE APPROVED PLANS, THE GRADING AND EROSION CONTROL PLAN, THE STORMWATER MANAGEMENT PLAN (SWMP), THE SOILS AND GEOTECHNICAL REPORT, AND THE APPROPRIATE DESIGN AND CONSTRUCTION STANDARDS AND SPECIFICATIONS AT THE JOB SITE AT ALL TIMES, INCLUDING THE FOLLOWING:
  - EL PASO COUNTY ENGINEERING CRITERIA MANUAL (ECM)
  - CITY OF COLORADO SPRINGS/EL PASO COUNTY DRAINAGE CRITERIA MANUAL, VOLUMES 1 AND 2
  - COLORADO DEPARTMENT OF TRANSPORTATION (CDOT) STANDARD SPECIFICATIONS FOR ROAD AND BRIDGE CONSTRUCTION
  - CDOT M & S STANDARDS
- NOTWITHSTANDING ANYTHING DEPICTED IN THESE PLANS IN WORDS OR GRAPHIC REPRESENTATION, ALL DESIGN AND CONSTRUCTION RELATED TO ROADS, STORM DRAINAGE AND EROSION CONTROL SHALL CONFORM TO THE STANDARDS AND REQUIREMENTS OF THE MOST RECENT VERSION OF THE RELEVANT ADOPTED EL PASO COUNTY STANDARDS, INCLUDING THE LAND DEVELOPMENT CODE, THE ENGINEERING CRITERIA MANUAL, THE DRAINAGE CRITERIA MANUAL, AND THE DRAINAGE CRITERIA MANUAL VOLUME 2. ANY DEVIATIONS FROM REGULATIONS AND STANDARDS MUST BE REQUESTED, AND APPROVED, IN WRITING. ANY MODIFICATIONS NECESSARY TO MEET CRITERIA AFTER-THE-FACT WILL BE ENTIRELY THE DEVELOPER'S RESPONSIBILITY TO RECTIFY.
- IT IS THE DESIGN ENGINEER'S RESPONSIBILITY TO ACCURATELY SHOW EXISTING CONDITIONS, BOTH ONSITE AND OFFSITE, ON THE CONSTRUCTION PLANS. ANY MODIFICATIONS NECESSARY DUE TO CONFLICTS, OMISSIONS, OR CHANGED CONDITIONS WILL BE ENTIRELY THE DEVELOPER'S RESPONSIBILITY TO RECTIFY.
- CONTRACTOR SHALL SCHEDULE A PRE-CONSTRUCTION MEETING WITH EL PASO COUNTY **DEVELOPMENT SERVICES DEPARTMENT (DSD)**, INSPECTIONS, PRIOR TO STARTING CONSTRUCTION.
- IT IS THE CONTRACTOR'S RESPONSIBILITY TO UNDERSTAND THE REQUIREMENTS OF ALL JURISDICTIONAL AGENCIES AND TO OBTAIN ALL REQUIRED PERMITS, INCLUDING BUT NOT LIMITED TO EL PASO COUNTY EROSION AND STORMWATER QUALITY CONTROL PERMIT (ESQCP), REGIONAL BUILDING FLOODPLAIN DEVELOPMENT PERMIT, U.S. ARMY CORPS OF ENGINEERS-ISSUED 401 AND/OR 404 PERMITS, AND COUNTY AND STATE FUGITIVE DUST PERMITS.
- CONTRACTOR SHALL NOT DEViate FROM THE PLANS WITHOUT FIRST OBTAINING WRITTEN APPROVAL FROM THE DESIGN ENGINEER AND **DSD**. CONTRACTOR SHALL NOTIFY THE DESIGN ENGINEER IMMEDIATELY UPON DISCOVERY OF ANY ERRORS OR INCONSISTENCIES.
- ALL STORM DRAIN PIPE SHALL BE CLASS III RCP UNLESS OTHERWISE NOTED AND APPROVED BY DSD.
- CONTRACTOR SHALL COORDINATE GEOTECHNICAL TESTING PER ECM STANDARDS. PAVEMENT DESIGN SHALL BE APPROVED BY EL PASO COUNTY **DSD** PRIOR TO PLACEMENT OF CURB AND GUTTER AND PAVEMENT.
- ALL CONSTRUCTION TRAFFIC MUST ENTER/EXIT THE SITE AT APPROVED CONSTRUCTION ACCESS POINTS.
- SIGHT VISIBILITY TRIANGLES AS IDENTIFIED IN THE PLANS SHALL BE PROVIDED AT ALL INTERSECTIONS. OBSTRUCTIONS GREATER THAN 18 INCHES ABOVE FLOWLINE ARE NOT ALLOWED WITHIN SIGHT TRIANGLES.
- SIGNING AND STRIPING SHALL COMPLY WITH EL PASO COUNTY **DOT** AND MUTCD CRITERIA.
- CONTRACTOR SHALL OBTAIN ANY PERMITS REQUIRED BY EL PASO COUNTY **DOT**, INCLUDING WORK WITHIN THE RIGHT-OF-WAY AND SPECIAL TRANSPORT PERMITS.
- THE LIMITS OF CONSTRUCTION SHALL REMAIN WITHIN THE PROPERTY LINE UNLESS OTHERWISE NOTED. THE OWNER/DEVELOPER SHALL OBTAIN WRITTEN PERMISSION AND EASEMENTS, WHERE REQUIRED, FROM ADJOINING PROPERTY OWNERS PRIOR TO ANY OFF-SITE DISTURBANCE, GRADING, OR CONSTRUCTION.

Revise Department of Transportation (DOT) to Department of Public Works (DPW), typ. all. Unresolved.

Revise Development Services Department (DSD) to Planning and Community Development (PCD), typ. all. Unresolved.

GRADING NOTES:

- CONSTRUCTION MAY NOT COMMENCE UNTIL A CONSTRUCTION PERMIT IS OBTAINED FROM **DEVELOPMENT SERVICES INSPECTIONS** AND A PRECONSTRUCTION CONFERENCE IS HELD WITH **DEVELOPMENT SERVICES INSPECTIONS**.
- STORMWATER DISCHARGES FROM CONSTRUCTION SITES SHALL NOT CAUSE OR THREATEN TO CAUSE POLLUTION, CONTAMINATION, OR DEGRADATION OF STATE WATERS. ALL WORK AND EARTH DISTURBANCE SHALL BE DONE IN A MANNER THAT MINIMIZES POLLUTION OF ANY ON-SITE OR OFF SITE WATERS, INCLUDING WETLANDS.
- NOTWITHSTANDING ANYTHING DEPICTED IN THESE PLANS IN WORDS OR GRAPHIC REPRESENTATION, ALL DESIGN AND CONSTRUCTION RELATED TO ROADS, STORM DRAINAGE AND EROSION CONTROL SHALL CONFORM TO THE STANDARDS AND REQUIREMENTS OF THE MOST RECENT VERSION OF THE RELEVANT ADOPTED EL PASO COUNTY STANDARDS, INCLUDING THE LAND DEVELOPMENT CODE, THE ENGINEERING CRITERIA MANUAL, THE DRAINAGE CRITERIA MANUAL, AND THE DRAINAGE CRITERIA MANUAL VOLUME 2. ANY DEVIATIONS FROM REGULATIONS AND STANDARDS MUST BE REQUESTED, AND APPROVED, IN WRITING.
- A SEPARATE STORMWATER MANAGEMENT PLAN (SWMP) FOR THIS PROJECT SHALL BE COMPLETED AND AN EROSION AND STORMWATER QUALITY CONTROL PERMIT (ESQCP) ISSUED PRIOR TO COMMENCING CONSTRUCTION. DURING CONSTRUCTION THE SWMP IS THE RESPONSIBILITY OF THE DESIGNATED STORMWATER MANAGER SHALL BE LOCATED ON SITE AT ALL TIMES AND SHALL BE KEPT UP TO DATE WITH WORK PROGRESS AND CHANGES IN THE FIELD.
- ONCE THE ESQCP HAS BEEN ISSUED, THE CONTRACTOR MAY INSTALL THE INITIAL STAGE EROSION AND SEDIMENT CONTROL BMP'S AS INDICATED ON THE DEC. A PRECONSTRUCTION MEETING BETWEEN THE CONTRACTOR, ENGINEER, AND EL PASO COUNTY WILL BE HELD PRIOR TO ANY CONSTRUCTION. IT IS THE RESPONSIBILITY OF THE APPLICANT TO COORDINATE THE MEETING TIME AND PLACE WITH COUNTY **DSD** INSPECTIONS STAFF.
- SOIL EROSION CONTROL MEASURES FOR ALL SLOPES, CHANNELS, DITCHES, OR ANY DISTURBED LAND AREA SHALL BE COMPLETED WITHIN 21 CALENDAR DAYS AFTER FINAL GRADING, OR FINAL EARTH DISTURBANCE, HAS BEEN COMPLETED. DISTURBED AREAS AND STOCKPILES WHICH ARE NOT AT FINAL GRADE BUT WILL REMAIN DORMANT FOR LONGER THAN 30 DAYS SHALL ALSO BE MULCHED WITHIN 21 DAYS AFTER INTERIM GRADING. AN AREA THAT IS GOING TO REMAIN IN AN INTERIM STATE FOR MORE THAN 60 DAYS SHALL ALSO BE SEEDED. ALL TEMPORARY SOIL EROSION CONTROL MEASURES AND BMP'S SHALL BE MAINTAINED UNTIL PERMANENT SOIL EROSION CONTROL MEASURES ARE IMPLEMENTED AND ESTABLISHED.
- TEMPORARY SOIL EROSION CONTROL FACILITIES SHALL BE REMOVED AND EARTH DISTURBANCE AREAS GRADED AND STABILIZED WITH PERMANENT SOIL EROSION CONTROL MEASURES PURSUANT TO STANDARDS AND SPECIFICATION PRESCRIBED IN THE DCM VOLUME II AND THE ENGINEERING CRITERIA MANUAL (ECM) APPENDIX I.
- ALL PERSONS ENGAGED IN EARTH DISTURBANCE SHALL IMPLEMENT AND MAINTAIN ACCEPTABLE SOIL EROSION AND SEDIMENT CONTROL MEASURES INCLUDING BMP'S IN CONFORMANCE WITH THE EROSION CONTROL TECHNICAL STANDARDS OF THE DRAINAGE CRITERIA MANUAL (DCM) VOLUME II AND IN ACCORDANCE WITH THE STORMWATER MANAGEMENT PLAN (SWMP).
- ALL TEMPORARY EROSION CONTROL FACILITIES INCLUDING BMP'S AND ALL PERMANENT FACILITIES INTENDED TO CONTROL EROSION OF ANY EARTH DISTURBANCE OPERATIONS, SHALL BE INSTALLED AS DEFINED IN THE APPROVED PLANS, THE SWMP AND THE DCM VOLUME II AND MAINTAINED THROUGHOUT THE DURATION OF THE EARTH DISTURBANCE OPERATION.
- ANY EARTH DISTURBANCE SHALL BE CONDUCTED IN SUCH A MANNER SO AS TO EFFECTIVELY REDUCE ACCELERATED SOIL EROSION AND RESULTING SEDIMENTATION. ALL DISTURBANCES SHALL BE DESIGNED, CONSTRUCTED, AND COMPLETED SO THAT THE EXPOSED AREA OF ANY DISTURBED LAND SHALL BE LIMITED TO THE SHORTEST PRACTICAL PERIOD OF TIME.
- ANY TEMPORARY OR PERMANENT FACILITY DESIGNED AND CONSTRUCTED FOR THE CONVEYANCE OF STORMWATER AROUND, THROUGH, OR FROM THE EARTH DISTURBANCE AREA SHALL BE DESIGNED TO LIMIT THE DISCHARGE TO A NON-EROSIVE VELOCITY.
- CONCRETE WASH WATER SHALL BE CONTAINED AND DISPOSED OF IN ACCORDANCE WITH THE SWMP. NO WASH WATER SHALL BE DISCHARGED TO OR ALLOWED TO RUNOFF TO STATE WATERS, INCLUDING ANY SURFACE OR SUBSURFACE STORM DRAINAGE SYSTEM OR FACILITIES.
- EROSION CONTROL BLANKETING SHALL BE USED ON SLOPES STEEPER THAN 3:1.
- BUILDING, CONSTRUCTION, EXCAVATION, OR OTHER WASTE MATERIALS SHALL NOT BE TEMPORARILY PLACED OR STORED IN THE STREET, ALLEY, OR OTHER PUBLIC WAY, UNLESS IN ACCORDANCE WITH AN APPROVED TRAFFIC CONTROL PLAN. BMP'S MAY BE REQUIRED BY EL PASO COUNTY ENGINEERING IF DEEMED NECESSARY, BASED ON SPECIFIC CONDITIONS AND CIRCUMSTANCES.
- VEHICLE TRACKING OF SOILS AND CONSTRUCTION DEBRIS OFF-SITE SHALL BE MINIMIZED. MATERIALS TRACKED OFFSITE SHALL BE CLEANED UP AND PROPERLY DISPOSED OF IMMEDIATELY.
- CONTRACTOR SHALL BE RESPONSIBLE FOR THE REMOVAL OF ALL WASTES FROM THE CONSTRUCTION SITE FOR DISPOSAL IN ACCORDANCE WITH LOCAL AND STATE REGULATORY REQUIREMENTS. NO CONSTRUCTION DEBRIS, TREE SLASH, BUILDING MATERIAL WASTES OR UNUSED BUILDING MATERIALS SHALL BE BURIED, DUMPED, OR DISCHARGED AT THE SITE.
- THE OWNER, SITE DEVELOPER, CONTRACTOR, AND/OR THEIR AUTHORIZED AGENTS SHALL BE RESPONSIBLE FOR THE REMOVAL OF ALL CONSTRUCTION DEBRIS, DIRT, TRASH, ROCK, SEDIMENT, AND SAND THAT MAY ACCUMULATE IN THE STORM SEWER OR OTHER DRAINAGE CONVEYANCE SYSTEM AND STORMWATER APPURTENANCES AS A RESULT OF SITE DEVELOPMENT.
- THE QUANTITY OF MATERIALS STORED ON THE PROJECT SITE SHALL BE LIMITED, AS MUCH AS PRACTICAL, TO THAT QUANTITY REQUIRED TO PERFORM THE WORK IN AN ORDERLY SEQUENCE. ALL MATERIALS STORED ON-SITE SHALL BE STORED IN A NEAT, ORDERLY MANNER, IN THEIR ORIGINAL CONTAINERS, WITH ORIGINAL MANUFACTURER'S LABELS.
- NO CHEMICALS ARE TO BE USED BY THE CONTRACTOR, WHICH HAVE THE POTENTIAL TO BE RELEASED IN STORMWATER UNLESS PERMISSION FOR THE USE OF A SPECIFIC CHEMICAL IS GRANTED IN WRITING BY THE ECM ADMINISTRATOR. IN GRANTING THE USE OF SUCH CHEMICALS, SPECIAL CONDITIONS AND MONITORING MAY BE REQUIRED.
- BULK STORAGE STRUCTURES FOR PETROLEUM PRODUCTS AND OTHER CHEMICALS SHALL HAVE ADEQUATE PROTECTION SO AS TO CONTAIN ALL SPILLS AND PREVENT ANY SPILLED MATERIAL FROM ENTERING STATE WATERS, INCLUDING ANY SURFACE OR SUBSURFACE STORM DRAINAGE SYSTEM OR FACILITIES.
- NO PERSON SHALL CAUSE THE IMPEDIMENT OF STORMWATER FLOW IN THE FLOW LINE OF THE CURB AND GUTTER OR IN THE DITCHLINE.
- INDIVIDUALS SHALL COMPLY WITH THE "COLORADO WATER QUALITY CONTROL ACT" (TITLE 25, ARTICLE 8, CRS), AND THE "CLEAN WATER ACT" (33 USC 1344), IN ADDITION TO THE REQUIREMENTS INCLUDED IN THE DCM VOLUME II AND THE ECM APPENDIX I. ALL APPROPRIATE PERMITS MUST BE OBTAINED BY THE CONTRACTOR PRIOR TO CONSTRUCTION (NPDES, FLOODPLAIN, 404, FUGITIVE DUST, ETC.). IN THE EVENT OF CONFLICTS BETWEEN THESE REQUIREMENTS AND LAWS, RULES, OR REGULATIONS OF OTHER FEDERAL, STATE, OR COUNTY AGENCIES, THE MORE RESTRICTIVE LAWS, RULES, OR REGULATIONS SHALL APPLY.
- ALL CONSTRUCTION TRAFFIC MUST ENTER/EXIT THE SITE AT APPROVED CONSTRUCTION ACCESS POINTS.
- PRIOR TO ACTUAL CONSTRUCTION THE PERMITTEE SHALL VERIFY THE LOCATION OF EXISTING UTILITIES.
- A WATER SOURCE SHALL BE AVAILABLE ON SITE DURING EARTHWORK OPERATIONS AND UTILIZED AS REQUIRED TO MINIMIZE DUST FROM EARTHWORK EQUIPMENT AND WIND.
- THE SOILS REPORT FOR THIS SITE HAS BEEN PREPARED BY **WILLIAMSON ENGINEERING** AND SHALL BE CONSIDERED A PART OF THESE PLANS.
- AT LEAST TEN DAYS PRIOR TO THE ANTICIPATED START OF CONSTRUCTION, FOR PROJECTS THAT WILL DISTURB 1 ACRE OR MORE, THE OWNER OR OPERATOR OF CONSTRUCTION ACTIVITY SHALL SUBMIT A PERMIT APPLICATION FOR STORMWATER DISCHARGE TO THE COLORADO DEPARTMENT OF PUBLIC HEALTH AND ENVIRONMENT, WATER QUALITY DIVISION. THE APPLICATION CONTAINS CERTIFICATION OF COMPLETION OF A STORMWATER MANAGEMENT PLAN (SWMP), OF WHICH THIS GRADING AND EROSION CONTROL PLAN MAY BE A PART. FOR INFORMATION OR APPLICATION MATERIALS CONTACT:

COLORADO DEPARTMENT OF PUBLIC HEALTH AND ENVIRONMENT  
WATER QUALITY CONTROL DIVISION  
WQCD - PERMITS  
4300 CHERRY CREEK DRIVE SOUTH  
DENVER, CO 80246-1530  
ATTN: PERMITS UNIT

Fill in the blank. Unresolved.

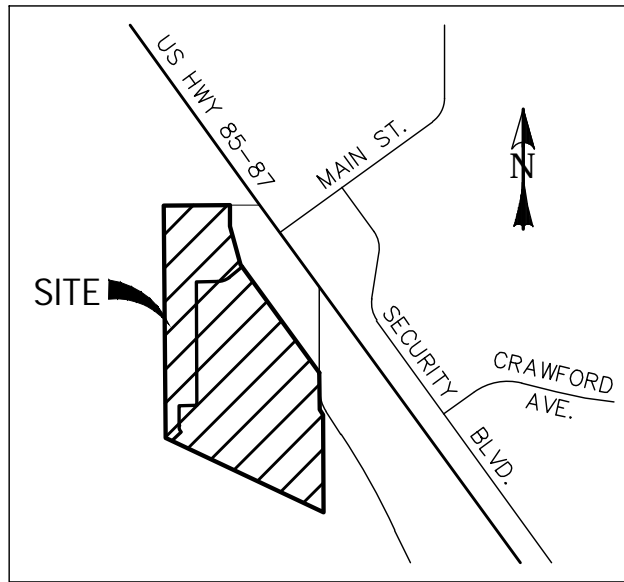
Provide basis of bearing and basis of elevation.

# RIVERBEND CROSSING FILING NO. 1

## STREETS, STORM & STRIPING

### CONSTRUCTION PLANS

EL PASO COUNTY, COLORADO



VICINITY MAP  
SCALE: N.T.S.

Revise to the following paragraph:

These detailed plans and specifications were prepared under my direction and supervision. Said plans and specifications have been prepared according to the criteria established by the County for detailed roadway, drainage, grading and erosion control plans and specifications, and said plans and specifications are in conformity with applicable master drainage plans and master transportation plans. Said plans and specifications meet the purposes for which the particular roadway and drainage facilities are designed and are correct to the best of my knowledge and belief. I accept responsibility for any liability caused by any negligent acts, errors or omissions on my part in preparation of these detailed plans and specifications. Unresolved.

CONSTRUCTION PLANS AND SPECIFICATIONS ENGINEERS STATEMENT:

THESE DETAILED PLANS AND SPECIFICATIONS WERE PREPARED UNDER MY DIRECTION AND SUPERVISION. SAID DETAILED PLANS AND SPECIFICATIONS HAVE BEEN PREPARED ACCORDING TO THE CRITERIA ESTABLISHED BY THE CITY/COUNTY FOR DETAILED DRAINAGE PLANS AND SPECIFICATIONS, AND SAID DETAILED PLANS AND SPECIFICATIONS ARE IN CONFORMITY WITH THE MASTER PLAN OF THE DRAINAGE BASIN. SAID DETAILED PLANS AND SPECIFICATIONS MEET THE PURPOSES WHICH THE PARTICULAR DRAINAGE FACILITY(S) IS DESIGNED. I ACCEPT RESPONSIBILITY FOR ANY LIABILITY CAUSED BY ANY NEGLIGENT ACTS, ERROR OR OMISSIONS ON MY PART IN PREPARATION OF THE DETAILED PLANS AND SPECIFICATIONS.

DAVID L. MUJARES, COLORADO PE #40510

DATE

OWNER STATEMENT:

THE OWNER WILL COMPLY WITH THE REQUIREMENTS OF THE EROSION CONTROL PLAN.

OWNER NAME:

DATE

EL PASO COUNTY APPROVAL:

COUNTY PLAN REVIEW IS PROVIDED ONLY FOR GENERAL CONFORMANCE WITH COUNTY DESIGN CRITERIA. THE COUNTY IS NOT RESPONSIBLE FOR THE ACCURACY AND ADEQUACY OF THE DESIGN, DIMENSIONS, AND/OR ELEVATIONS WHICH SHALL BE CONFIRMED AT THE JOB SITE. THE COUNTY THROUGH THE APPROVAL OF THIS DOCUMENT ASSUMES NO RESPONSIBILITY FOR THE COMPLETENESS AND/OR ACCURACY OF THIS DOCUMENT.

JENNIFER IRVINE, P.E. COUNTY ENGINEER

DATE

Show the street light pole locations on the street P&P. provide details.

Revise to the following paragraph:  
I, the owner/developer have read and will comply with all of the requirements specified in these detailed plans and specifications. Unresolved.

Update to show Filing 1 extents. Unresolved.

Add the following paragraph:  
In accordance with ECM Section 1.12, these construction documents will be valid for construction for a period of 2 years from the date signed by the El Paso County Engineer. If construction has not started within those 2 years, the plans will need to be resubmitted for approval, including payment of review fees at the Planning and Community Development Directors discretion. Unresolved.

Update to include all abbreviations & line types used. Example missing items: A.D., PVI, STA, FL, etc.

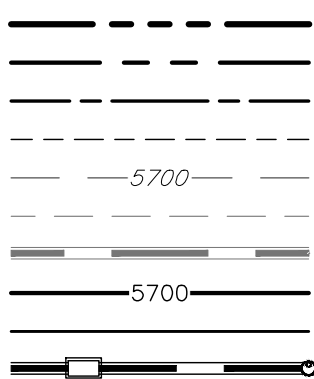
provide curb transition detail

For type C curb use Optional Type C

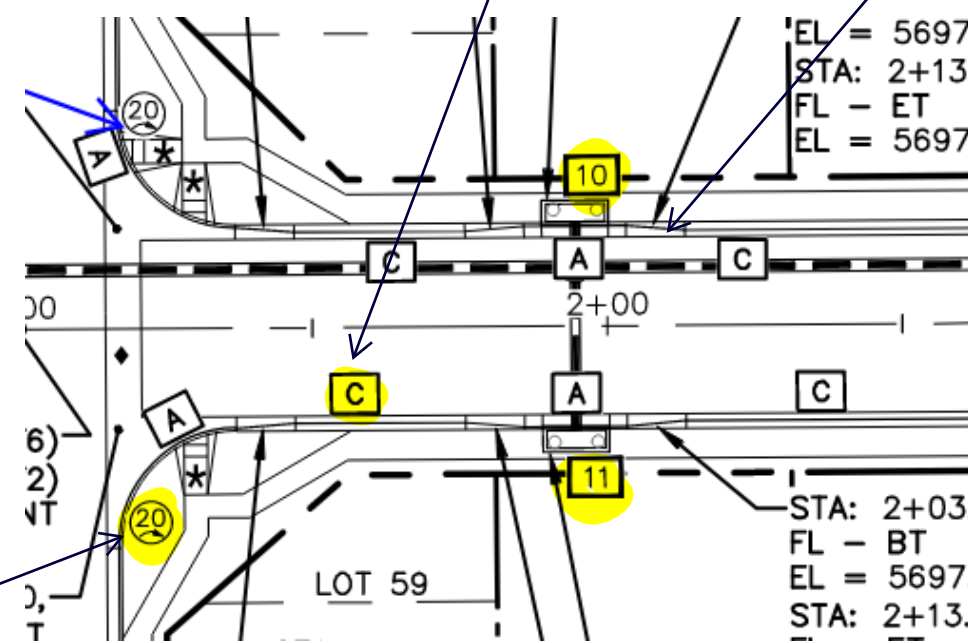
Add details sheet for standard details such as C&G, Driveway, crossspan, ramps, etc.

LEGEND

EXISTING	(E)	BOUNDARY
PROPOSED	(P)	RIGHT-OF-WAY
CURB & GUTTER	C&G	LOT LINE
EASEMENT	ESMT	EASEMENT
PUBLIC	PUB	(E) CONTOUR, INDEX
PUBLIC IMPROVEMENT	PI	(E) CONTOUR
BEGIN TRANSITION	BT	(E) STORM SEWER
END TRANSITION	ET	(P) CONTOUR, INDEX
CURB RETURN	CR	(P) CONTOUR
POINT OF CURVATURE	PC	(P) STORM SEWER, INLET, MH
POINT OF TANGENCY	PT	
POINT ON CURVE	POC	
POINT OF COMPOUND CURVATURE	PCC	
POINT OF REVERSE CURVATURE	PRC	
RADIUS POINT	RP	
TYPE 'A' CURB AND GUTTER	[A]	



Add symbols highlighted in yellow to the legend.



SHEET INDEX:

TITLE SHEET	1 OF 14
TAK LANE	2 OF 14
MAIN STREET, PETER CIRCLE & CUL-DE-SAC 01 FL	3 OF 14
BOOKER BLVD	4 OF 14
ANNE WAY	5 OF 14
CARTER DRIVE	6 OF 14
STM-01, STM-02, & STM-02A	7 OF 14
STM-03 & STM-03A	8 OF 14
STM-04, STM-04A, STM-04B, & STM-04C	9 OF 14
STM-05, STM-05A, & STM-05B	10 OF 14
SIGNAGE & STRIPING PLAN	11 OF 14
SIGNAGE & STRIPING PLAN	12 OF 14
STORMWATER QUALITY FACILITY DETAILS	13 OF 14
STORMWATER QUALITY FACILITY DETAILS	14 OF 14

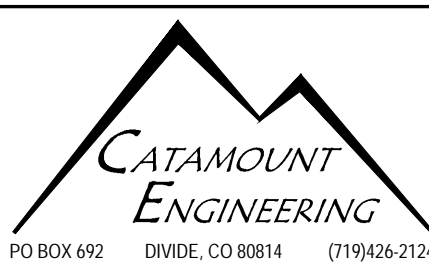
PCD File No. SF-18-044  
Unresolved.

REV.	DESCRIPTION	DATE



Know what's below.  
Call 72 hours before you dig.  
For more details visit:  
www.call811.com

PREPARED FOR:	AVATAR EQUITIES, LLC
6800 JERICHO TURNPIKE SUITE 120W #204 SYOSSET, NY 11791	



RIVERBEND CROSSING FILING NO. 1 STREET, STORM & STRIPING CONSTRUCTION DRAWINGS
---

DESIGNED BY: MGP	DRAWN BY: MGP
SCALE: N/A	DATE: 02/10/20
JOB NUMBER: 17-114	SHEET: 1 OF 14





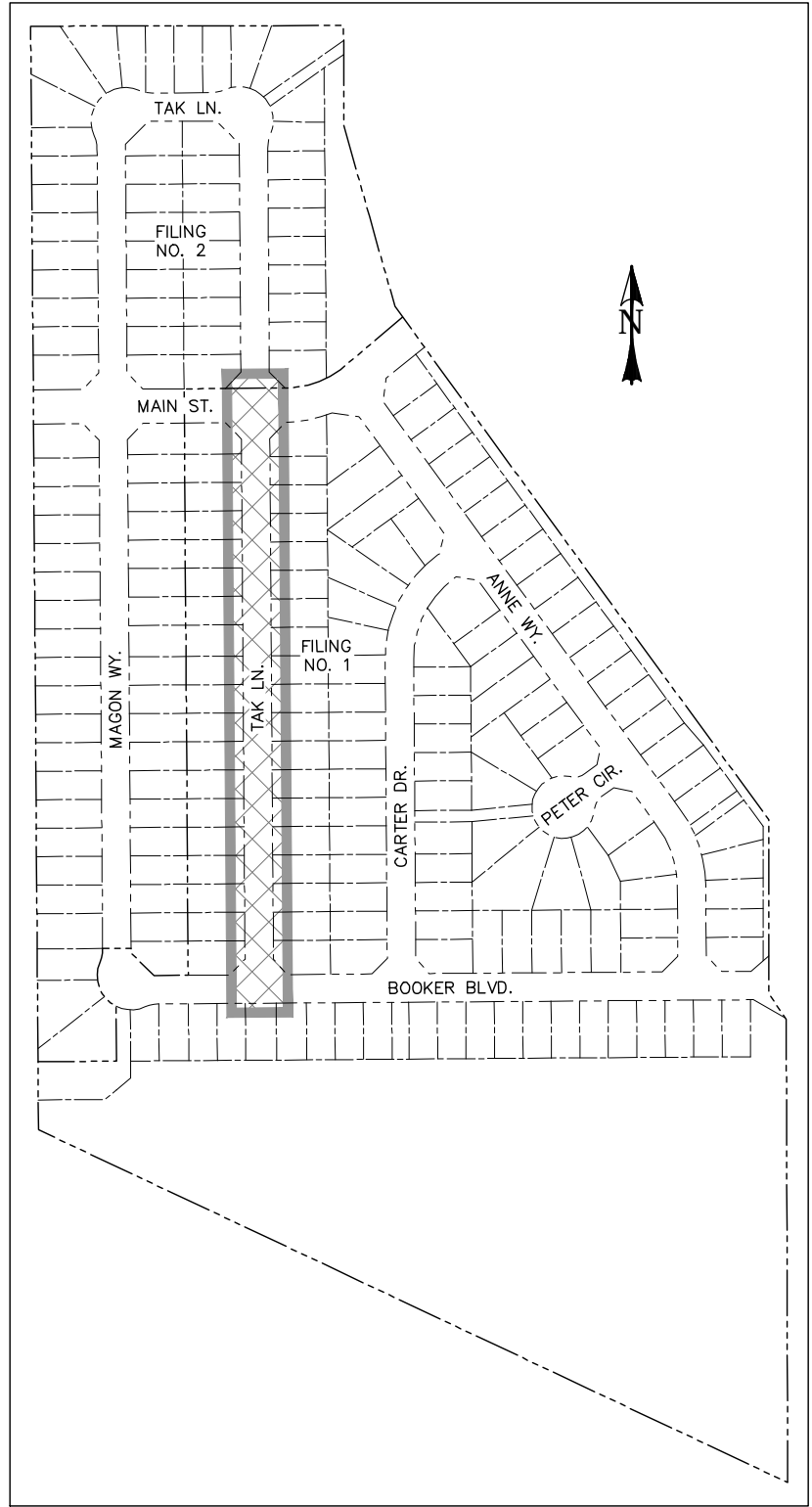
Road profile must be flatter at the intersections where ADA crossings are provided in order to meet the ADA criteria for cross slopes (2% max). Typ. all. Unresolved.

Move label so it's not blocking the ramp, typ. all. Unresolved.

Provide a legend symbol for "C". Unresolved.

Provide road classifications of all roads. Unresolved.

Provide curve data for the curb returns. Unresolved.

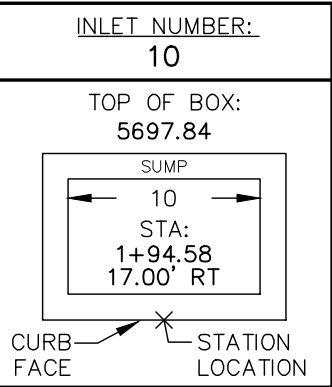
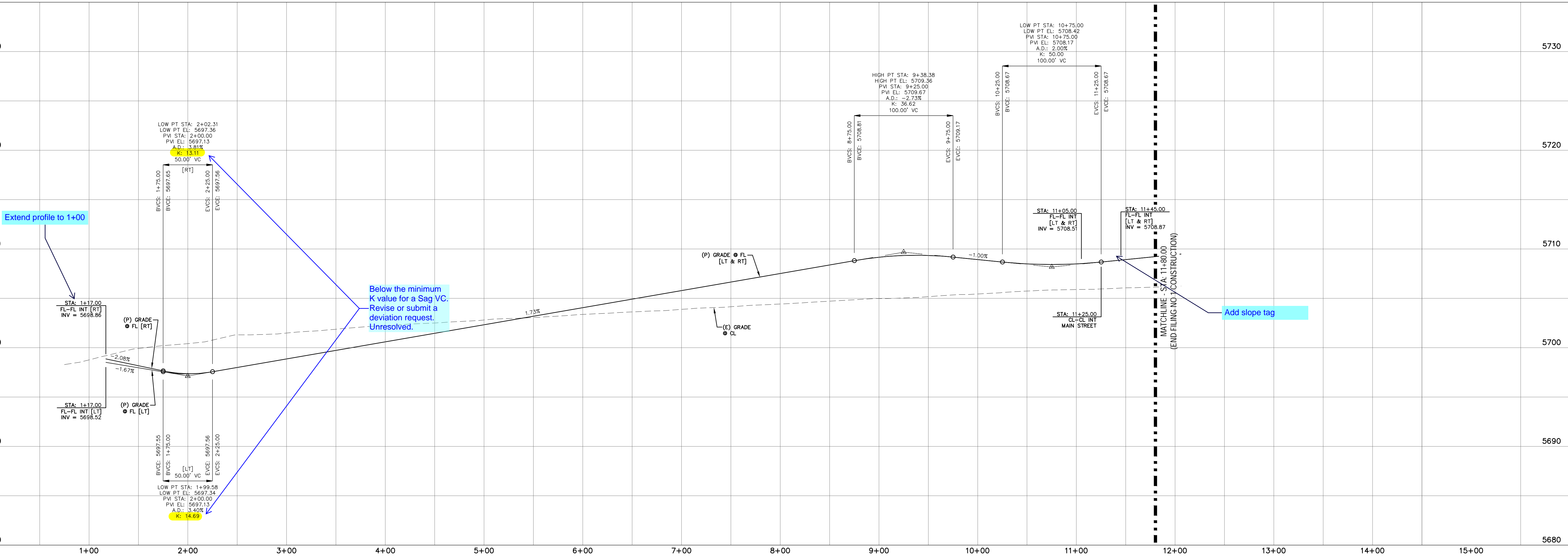


LOCATION MAP  
SCALE: N.T.S.

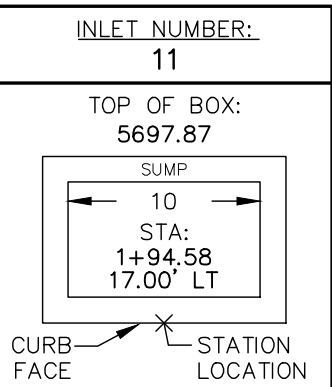
0 50 100  
HORIZONTAL SCALE: 1" = 50'  
VERTICAL SCALE: 1" = 5'

- ★ PED INTERSECTION RAMP  
(REF: SD 2-41 & SD 2-42)
- ★★ PARALLEL PED RAMP  
(REF: SD 2-50)
- STANDARD CROSSSPAN  
(REF: SD 2-26)

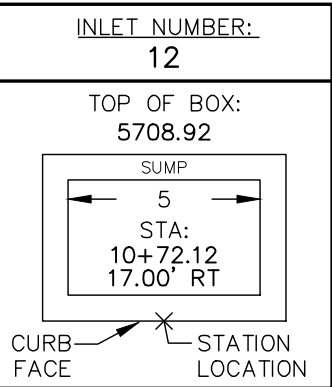
LINE TABLE		
LINE	BEARING	DISTANCE
L11	N0° 24' 10"W	1498.00



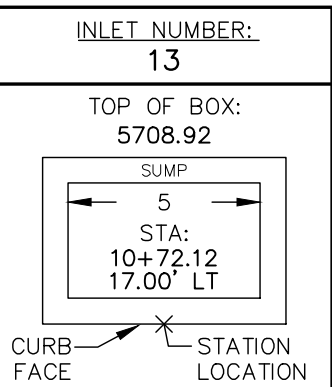
INLET DATA  
SCALE: N.T.S.



INLET DATA  
SCALE: N.T.S.



INLET DATA  
SCALE: N.T.S.



INLET DATA  
SCALE: N.T.S.

REV.	DESCRIPTION	DATE



Know what's below.  
Call 72 hours before you dig.  
For more details visit:  
www.call811.com

STREET NAME ABBREVIATIONS:

- = S11
- = S12
- = S13
- = S14
- = S15
- = S16
- = S17
- = CDS

PREPARED FOR:  
AVATAR EQUITIES, LLC

6800 JERICHO TURNPIKE  
SUITE 120W #204  
SYOSSET, NY 11791

PREPARED UNDER MY DIRECT SUPERVISION FOR AND BEHALF OF CATAMOUNT ENGINEERING.

DAVID L. MIJARES, COLORADO PE #40510

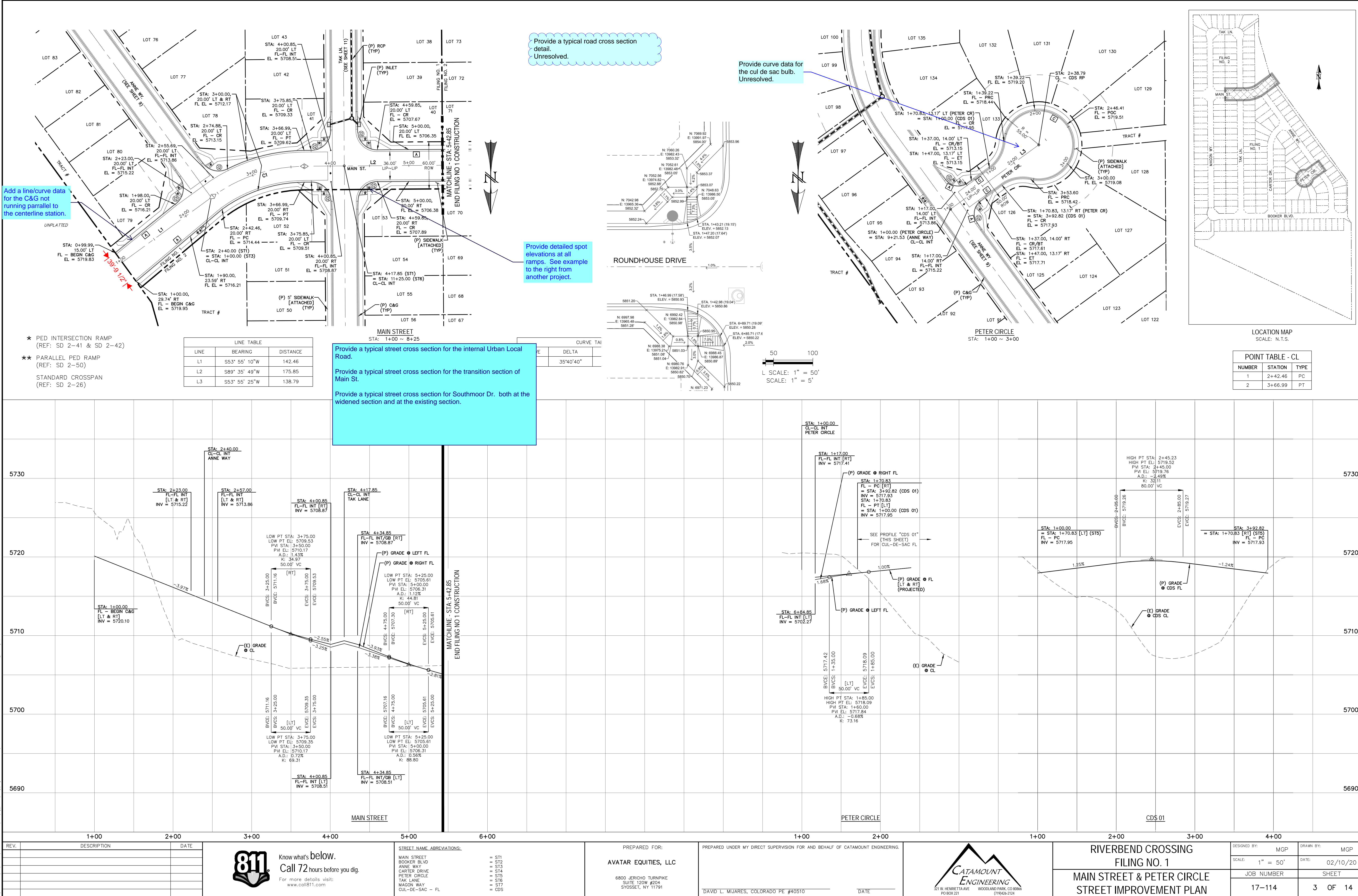
DATE



RIVERBEND CROSSING  
FILING NO. 1  
TAK LANE  
STREET IMPROVEMENT PLAN

DESIGNED BY:	MGP	DRAWN BY:	MGP
SCALE:	1" = 50'	DATE:	02/10/20
JOB NUMBER	17-114	SHEET	2 OF 14





REV.	DESCRIPTION	DATE

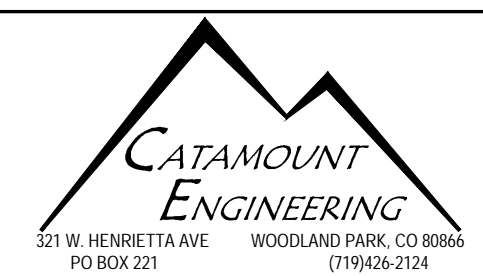


Know what's below.  
Call 72 hours before you dig.  
For more details visit:  
www.call811.com

STREET NAME ABBREVIATIONS:
MAIN STREET
BOOKER BLVD
ANNE WAY
CARTER DRIVE
PETER CIRCLE
TAK LANE
MAGON WAY
CL-DE-SAC - FL

PREPARED FOR:
AVATAR EQUITIES, LLC
6800 JERICHO TURNPIKE
SUITE 120W #204
SYOSSET, NY 11791

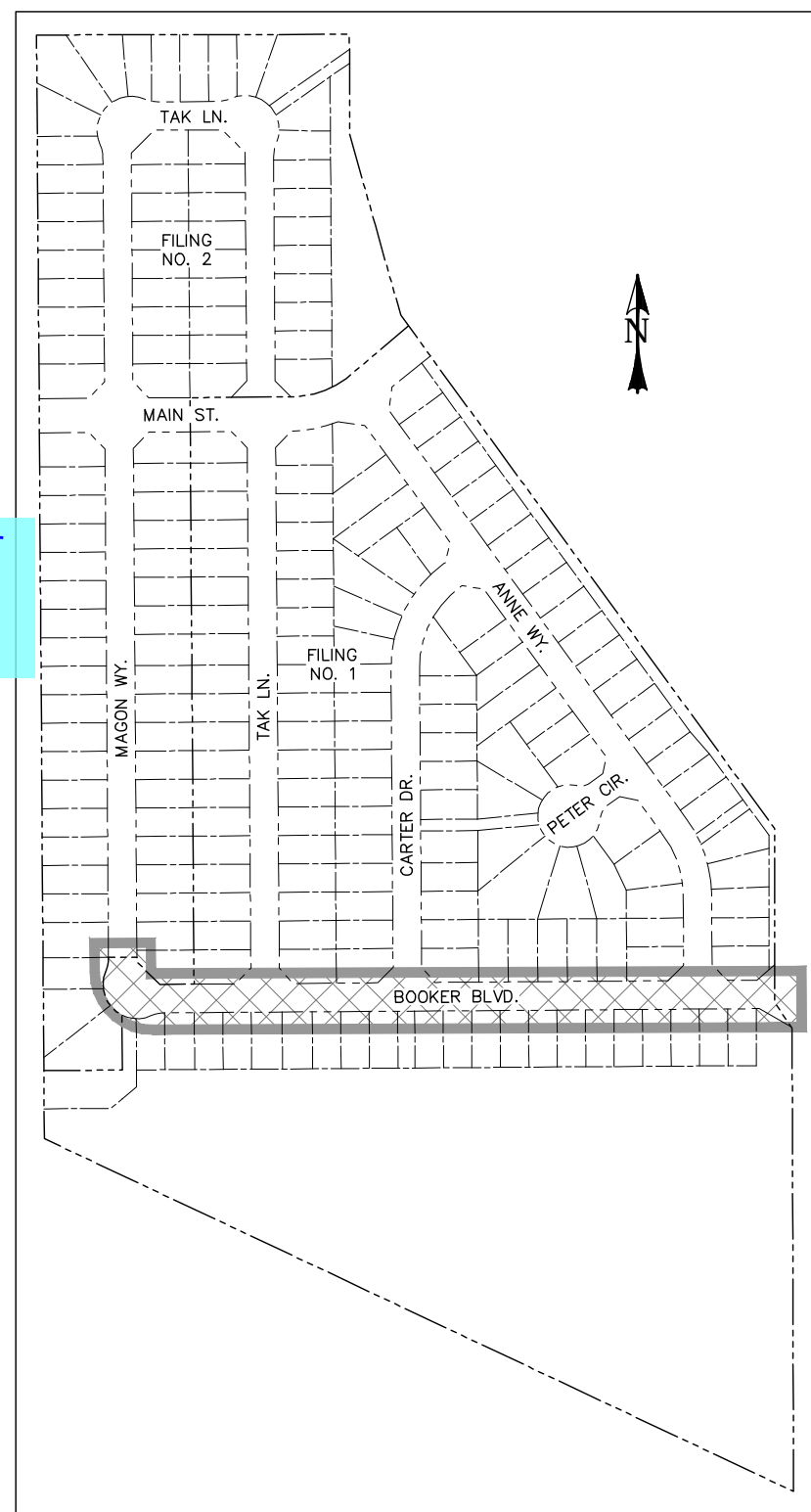
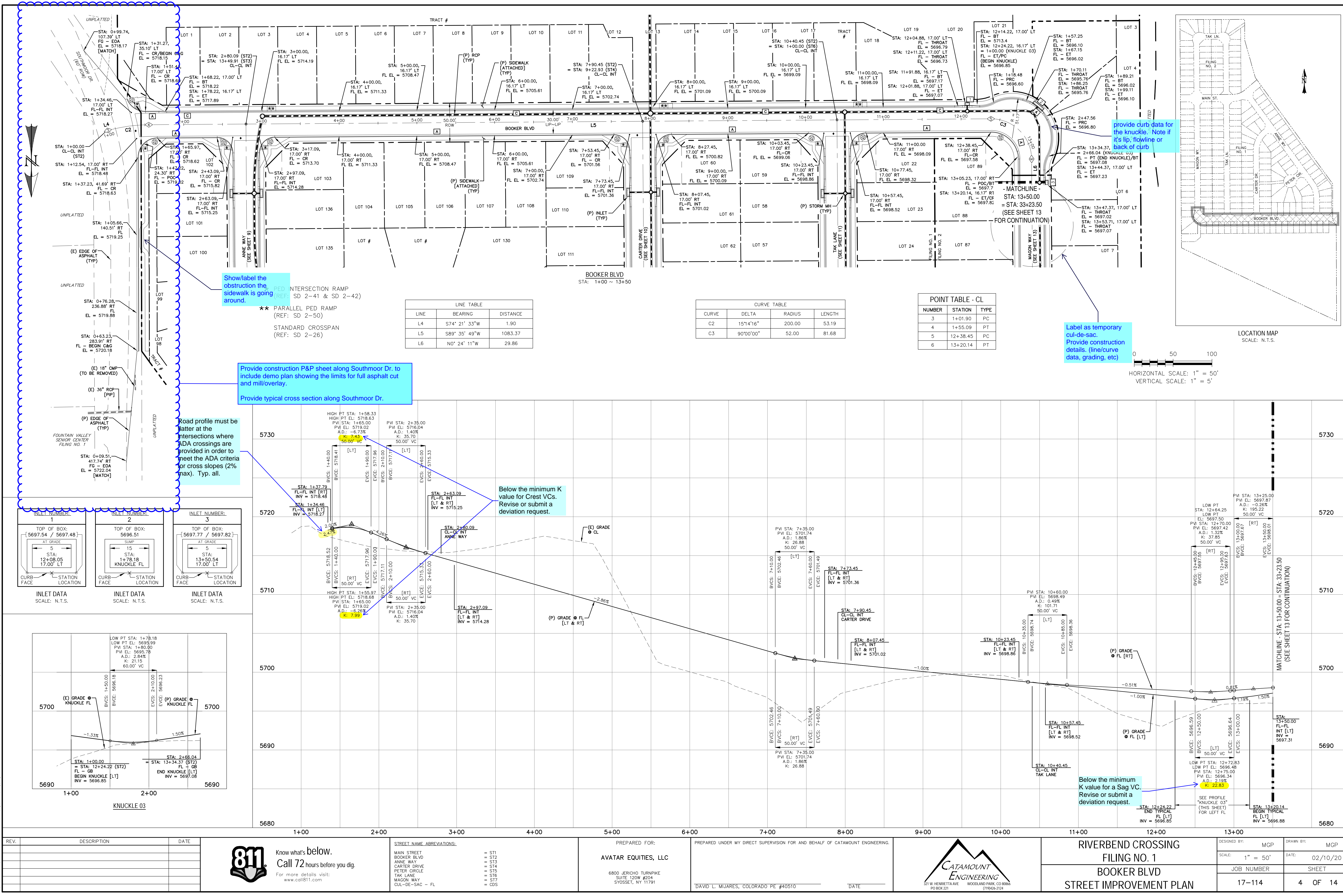
PREPARED UNDER MY DIRECT SUPERVISION FOR AND BEHALF OF:
CATAMOUNT ENGINEERING
DAVID L. MIJARES, COLORADO PE #40510
DATE



RIVERBEND CROSSING
FILING NO. 1
MAIN STREET & PETER CIRCLE
STREET IMPROVEMENT PLAN

DESIGNED BY:	MGP	DRAWN BY:	MGP
SCALE:	1" = 50'	DATE:	02/10/20
JOB NUMBER	17-114	SHEET	3 OF 14



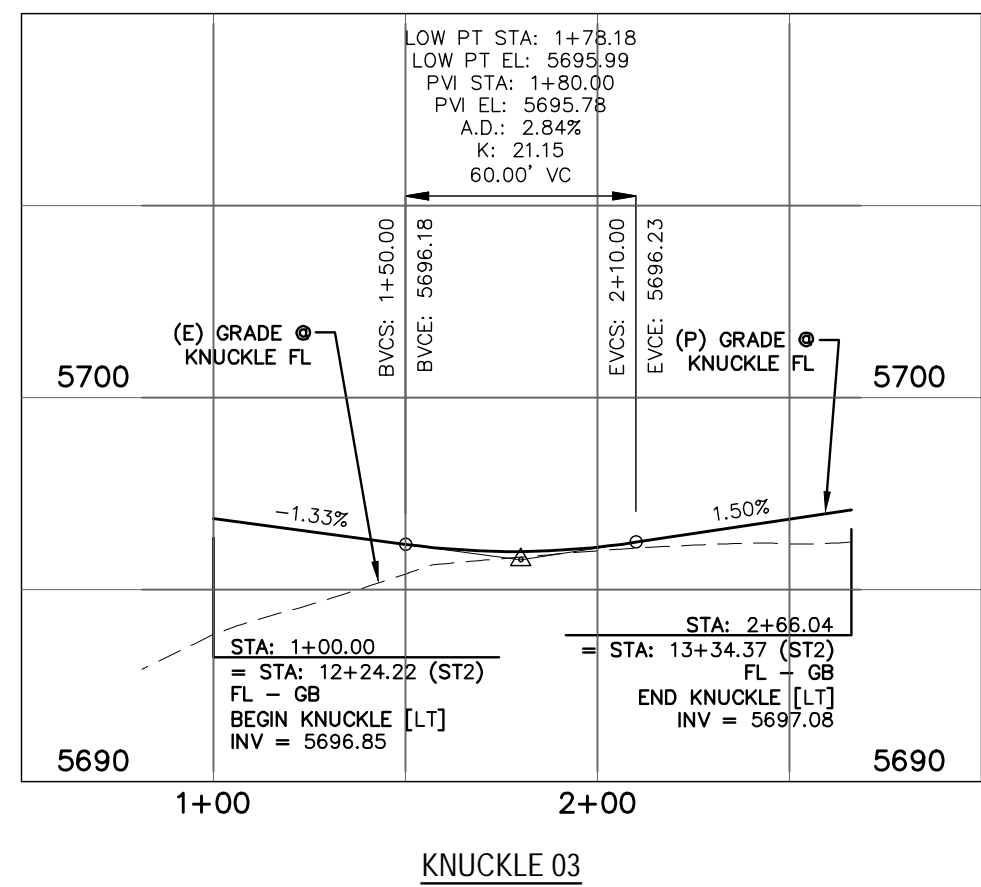
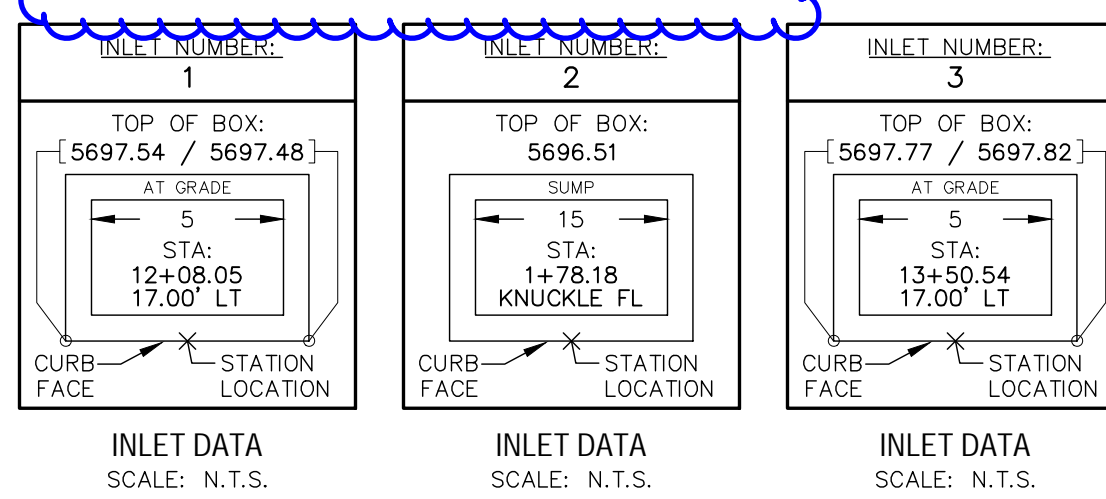


LINE TABLE		
LINE	BEARING	DISTANCE
L4	S74° 21' 33"W	1.90
L5	S89° 35' 49"W	1083.37
L6	N0° 24' 11"W	29.86

CURVE TABLE			
CURVE	DELTA	RADIUS	LENGTH
C2	15°14'16"	200.00	53.19
C3	90°00'00"	52.00	81.68

POINT TABLE - CL		
NUMBER	STATION	TYPE
3	1+01.90	PC
4	1+55.09	PT
5	12+38.45	PC
6	13+20.14	PT

HORIZONTAL SCALE: 1" = 50'  
VERTICAL SCALE: 1" = 5'



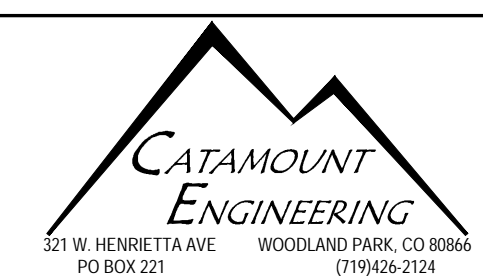
REV.	DESCRIPTION	DATE



STREET NAME ABBREVIATIONS:  
MAIN STREET = S11  
BOOKER BLVD = S12  
ANNE WAY = S13  
CARTER DRIVE = S14  
PETER CIRCLE = S15  
TAK LANE = S16  
MAGON WAY = S17  
CL-DE-SAC = FL

PREPARED FOR:  
**AVATAR EQUITIES, LLC**  
6800 JERICHO TURNPIKE  
SUITE 120W #204  
SYOSSET, NY 11791

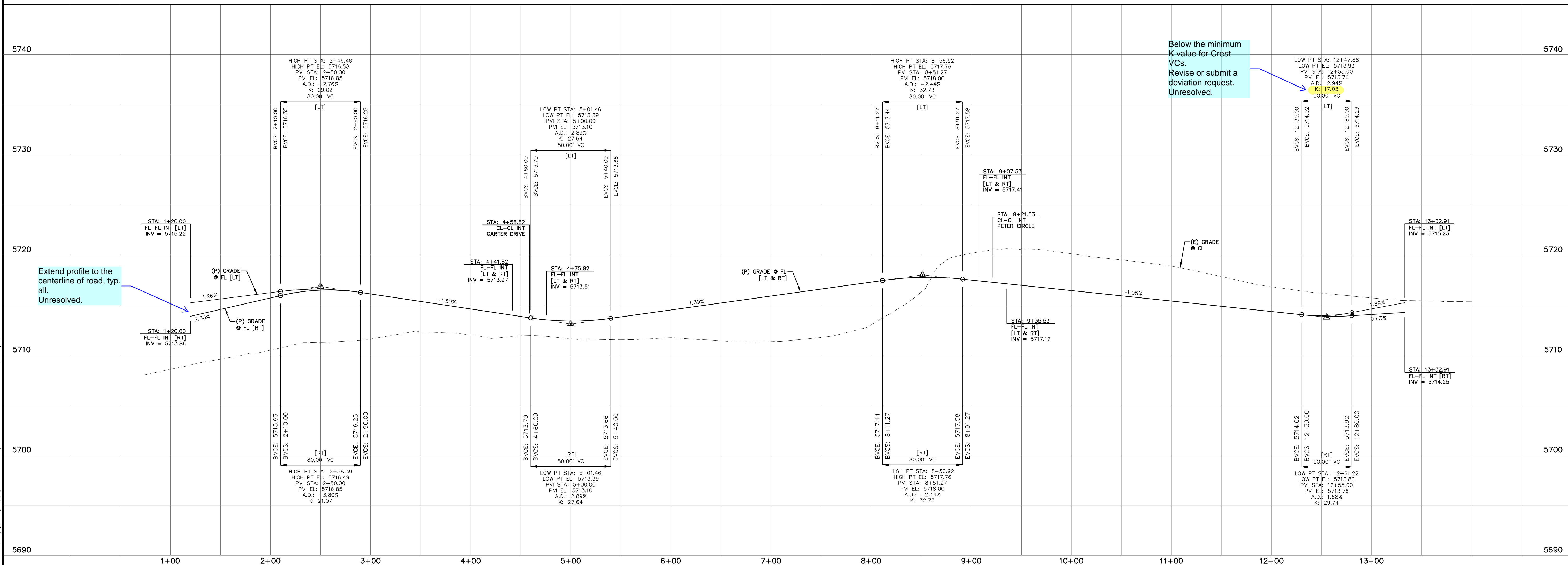
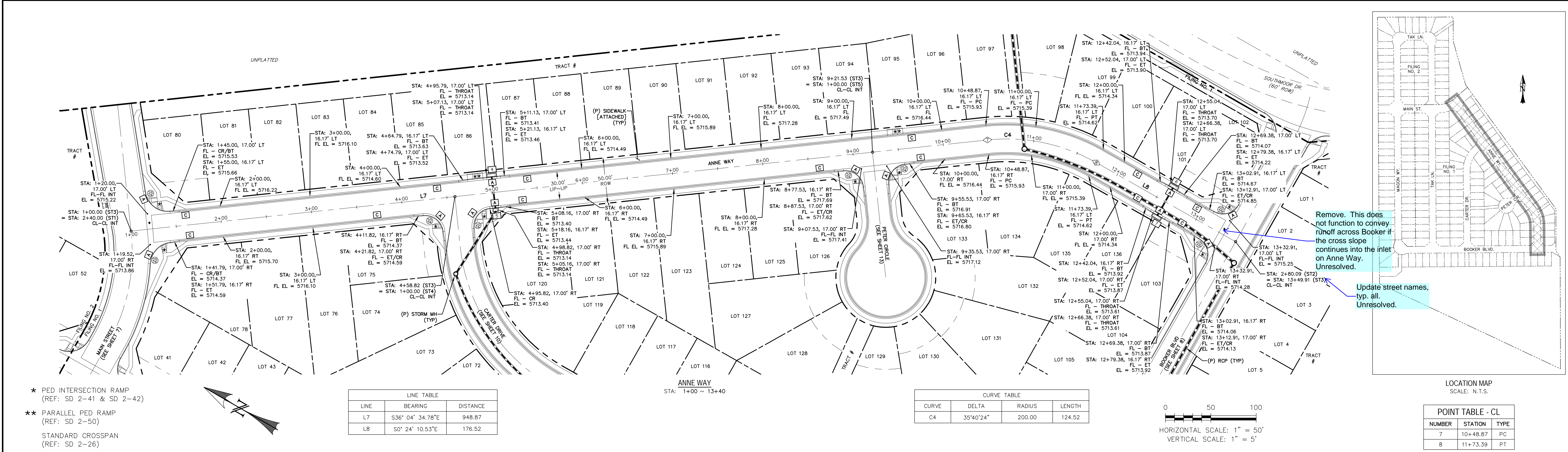
PREPARED UNDER MY DIRECT SUPERVISION FOR AND BEHALF OF CATAMOUNT ENGINEERING.  
DAVID L. MIJARES, COLORADO PE #40510  
DATE



RIVERBEND CROSSING  
FILING NO. 1  
BOOKER BLVD  
STREET IMPROVEMENT PLAN

DESIGNED BY: MGP	DRAWN BY: MGP
SCALE: 1" = 50'	DATE: 02/10/20
JOB NUMBER	SHEET
17-114	4 OF 14





LOCATION MAP  
SCALE: N.T.S.

POINT TABLE - CL

NUMBER	STATION	TYPE
7	10+48.87	PC
8	11+73.39	PT

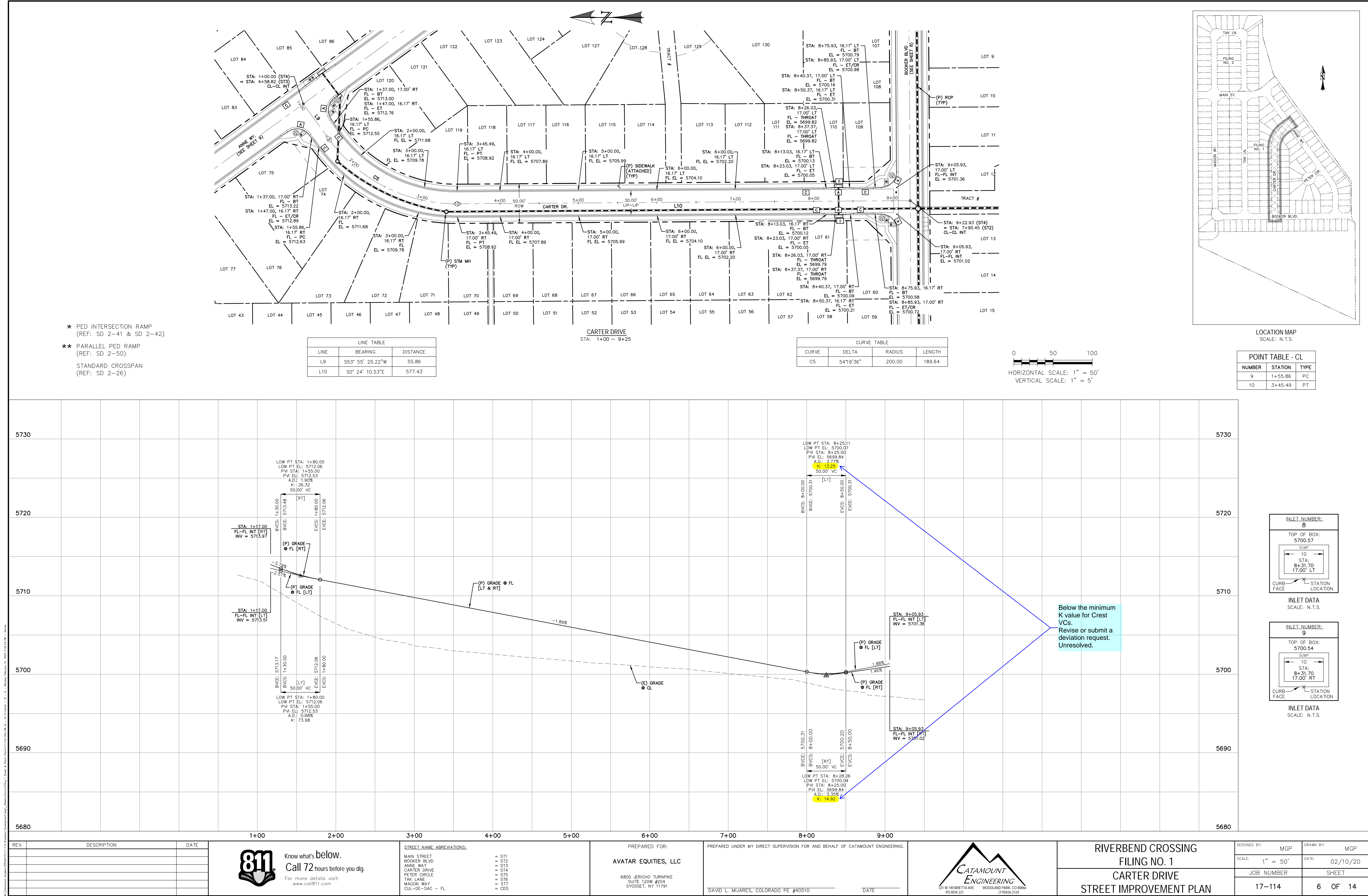
INLET NUMBER: 4  
TOP OF BOX: 5713.89  
SUMP  
10  
STA: 5+01.46  
17.00' LT  
CURB FACE STATION LOCATION  
INLET DATA  
SCALE: N.T.S.

INLET NUMBER: 5  
TOP OF BOX: 5713.89  
SUMP  
5  
STA: 5+01.99  
17.00' RT  
CURB FACE STATION LOCATION  
INLET DATA  
SCALE: N.T.S.

INLET NUMBER: 6  
TOP OF BOX: 5714.45  
SUMP  
10  
STA: 12+60.71  
17.00' LT  
CURB FACE STATION LOCATION  
INLET DATA  
SCALE: N.T.S.

INLET NUMBER: 7  
TOP OF BOX: 5714.36  
SUMP  
10  
STA: 12+60.71  
17.00' RT  
CURB FACE STATION LOCATION  
INLET DATA  
SCALE: N.T.S.

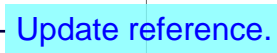






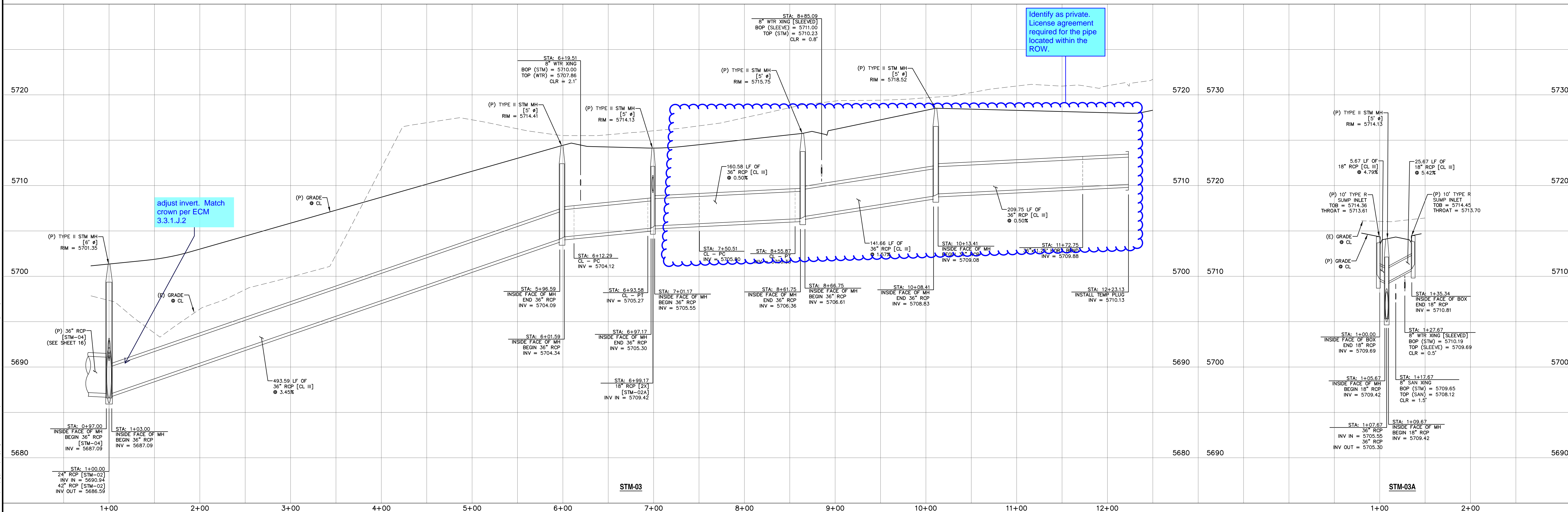
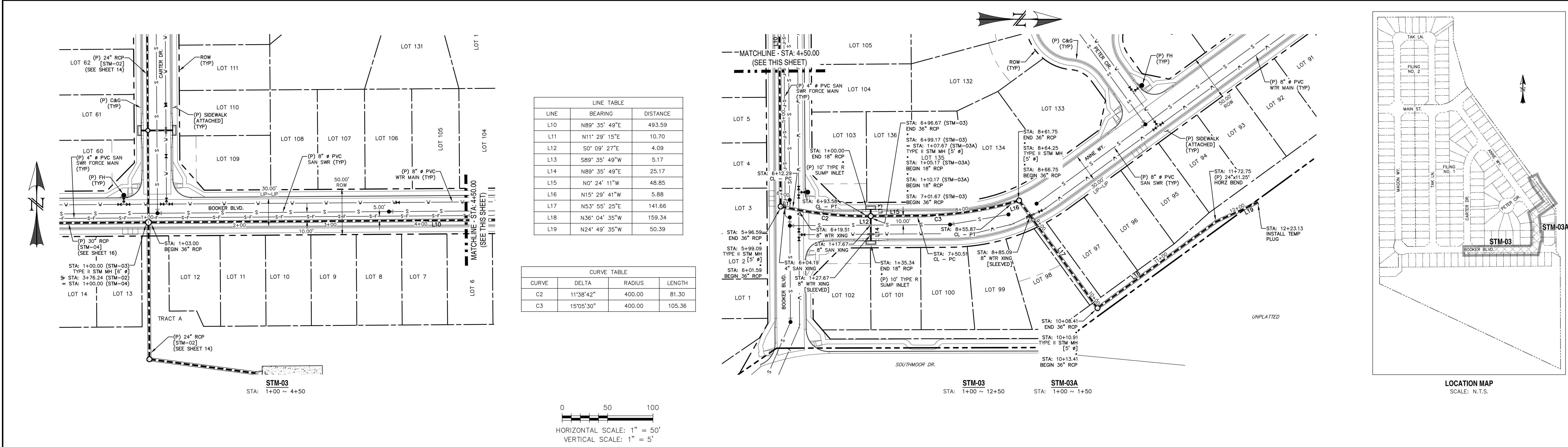



Adjust plan view to show the full extent of the storm sewer shown on the profile view.



DESIGNED BY:	MCP	DRAWN BY:	MCP
SCALE:	1" = 50'	DATE:	02/10/20
JOB NUMBER		SHEET	
17-114		7 OF 14	





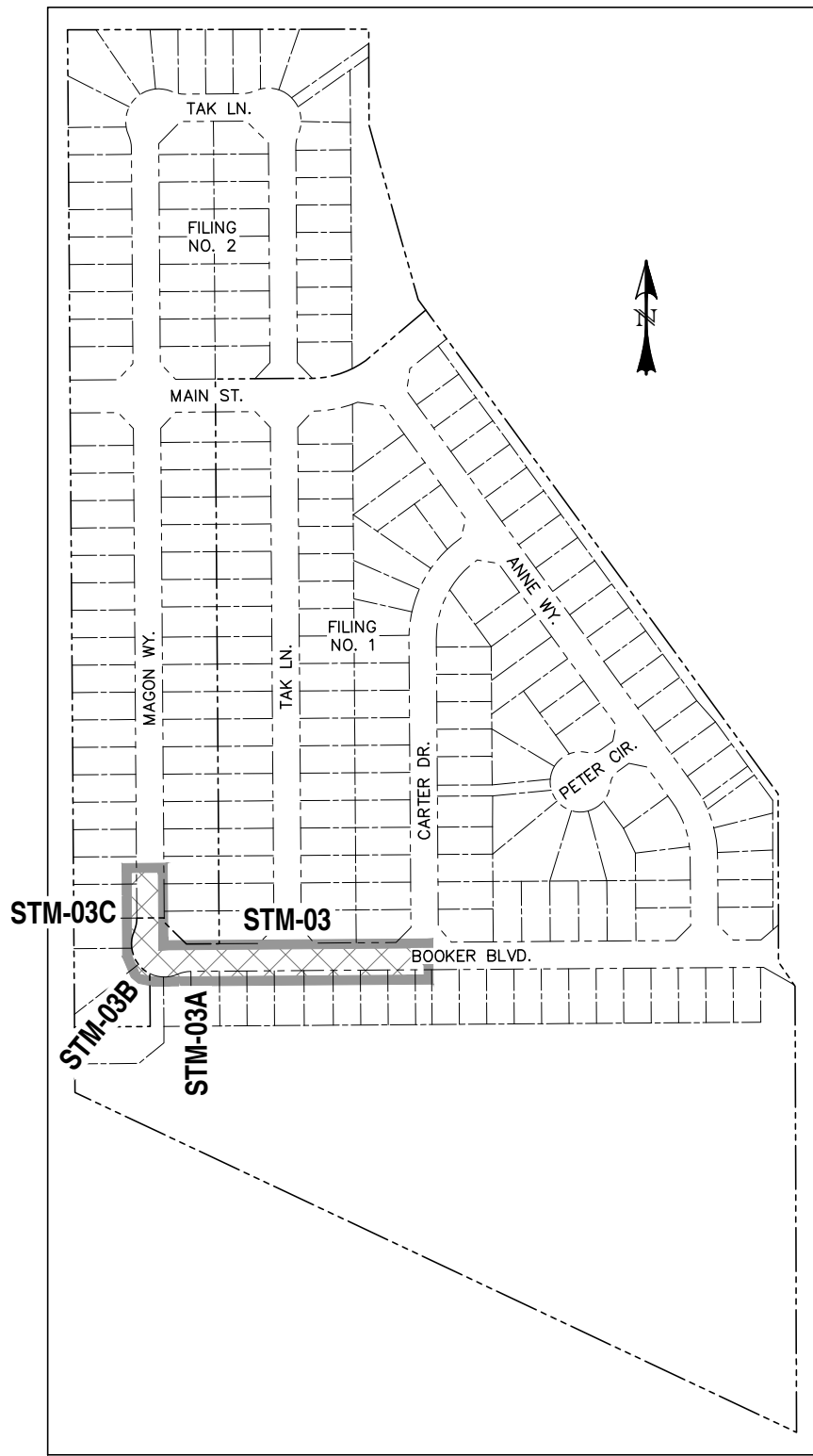
REV.	DESCRIPTION	DATE	 <div>Know what's below. Call 72 hours before you dig.  For more details visit: <a href="http://www.call811.com">www.call811.com</a></div>	<div>PREPARED FOR:  AVATAR EQUITIES, LLC  6800 JERICHO TURNPIKE SUITE 120W #204 SYOSSET, NY 11791</div>	<div>PREPARED UNDER MY DIRECT SUPERVISION FOR AND BEHALF OF CATAMOUNT ENGINEERING.   </div>
------	-------------	------	---	---	---



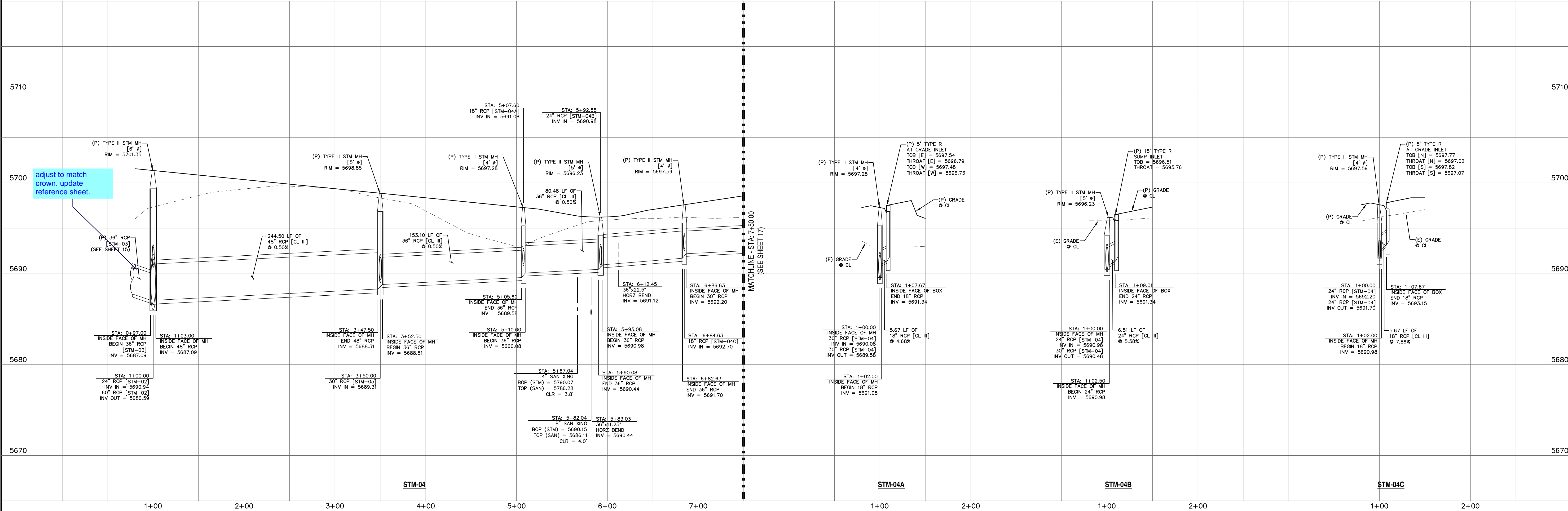
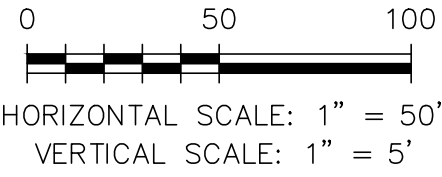
Provide construction plans for the private storm pipe/area drain along the rear lot lines of Basin B17.

Revise. Drainage report notes 20' inlet. Based on the inlet location, Filing 2 Lot 1 does not have a viable inlet location. Revise the design.

LINE TABLE		
LINE	BEARING	DISTANCE
L20	S89° 35' 49"W	244.50
L21	S89° 35' 49"W	153.10
L22	S0° 24' 11"E	5.67
L23	S89° 35' 49"W	73.43
L24	N79° 09' 11"W	7.05
L25	S39° 10' 47"W	6.51
L26	N22° 54' 11"W	17.37
L27	N0° 24' 11"W	70.18
L28	S89° 35' 49"W	5.67
L29	N0° 24' 11"W	257.43



LOCATION MAP  
SCALE: N.T.S.



REV.	DESCRIPTION	DATE

Know what's below.  
Call 72 hours before you dig.  
For more details visit:  
www.call811.com

PREPARED FOR:  
AVATAR EQUITIES, LLC  
6800 JERICHO TURNPIKE  
SUITE 120W #204  
SYOSSET, NY 11791

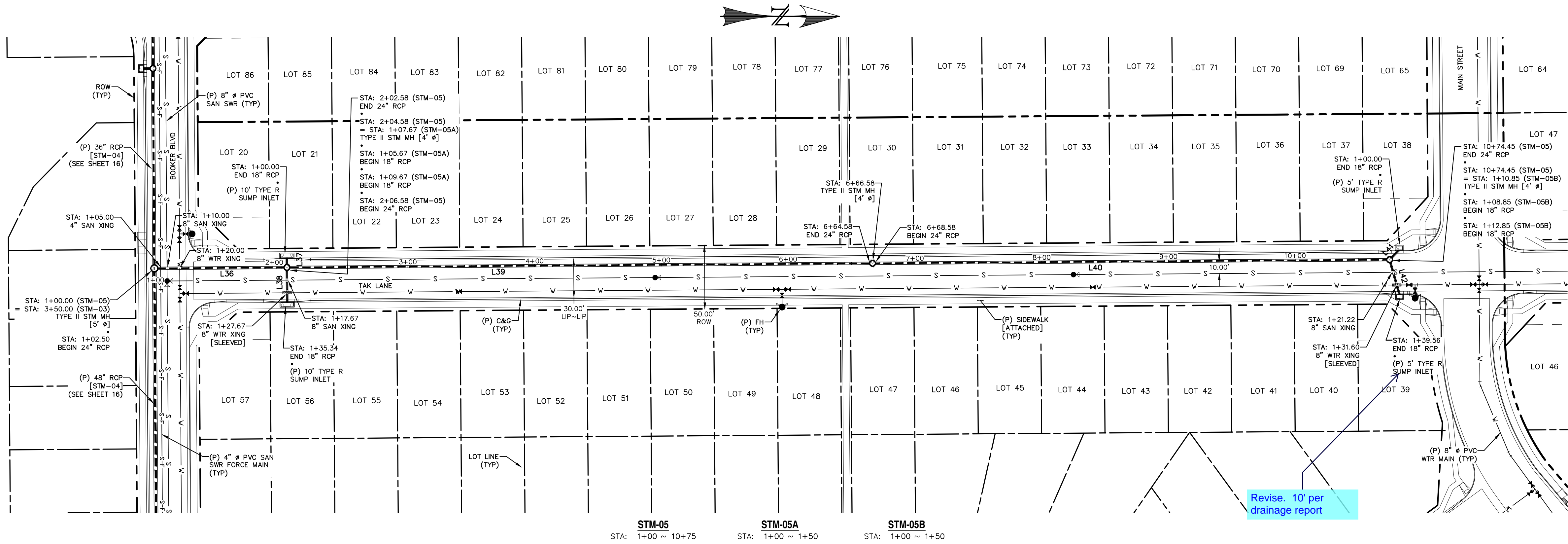
PREPARED UNDER MY DIRECT SUPERVISION FOR AND BEHALF OF CATAMOUNT ENGINEERING.  
DAVID L. MIJARES, COLORADO PE #40510  
DATE

CATAMOUNT ENGINEERING  
321 W. HENRIETTA AVE  
PO BOX 221  
WOOLAND PARK, CO 80686  
(719) 428-2124

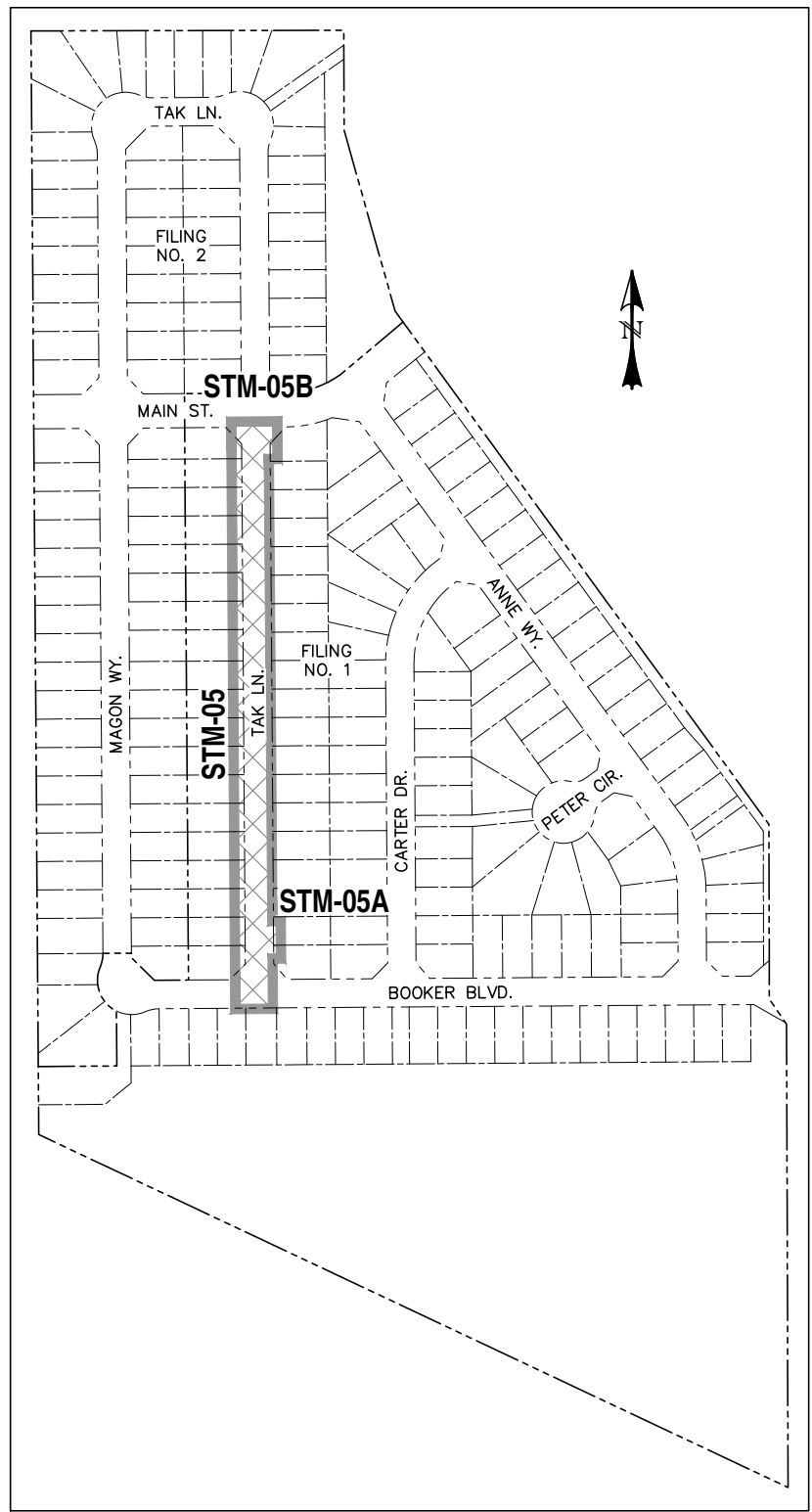
RIVERBEND CROSSING  
FILING NO. 1  
STORM SEWER  
PLAN & PROFILE

DESIGNED BY:	MGP	DRAWN BY:	MGP
SCALE:	1" = 50'	DATE:	02/10/20
JOB NUMBER	17-114	SHEET	9 OF 14

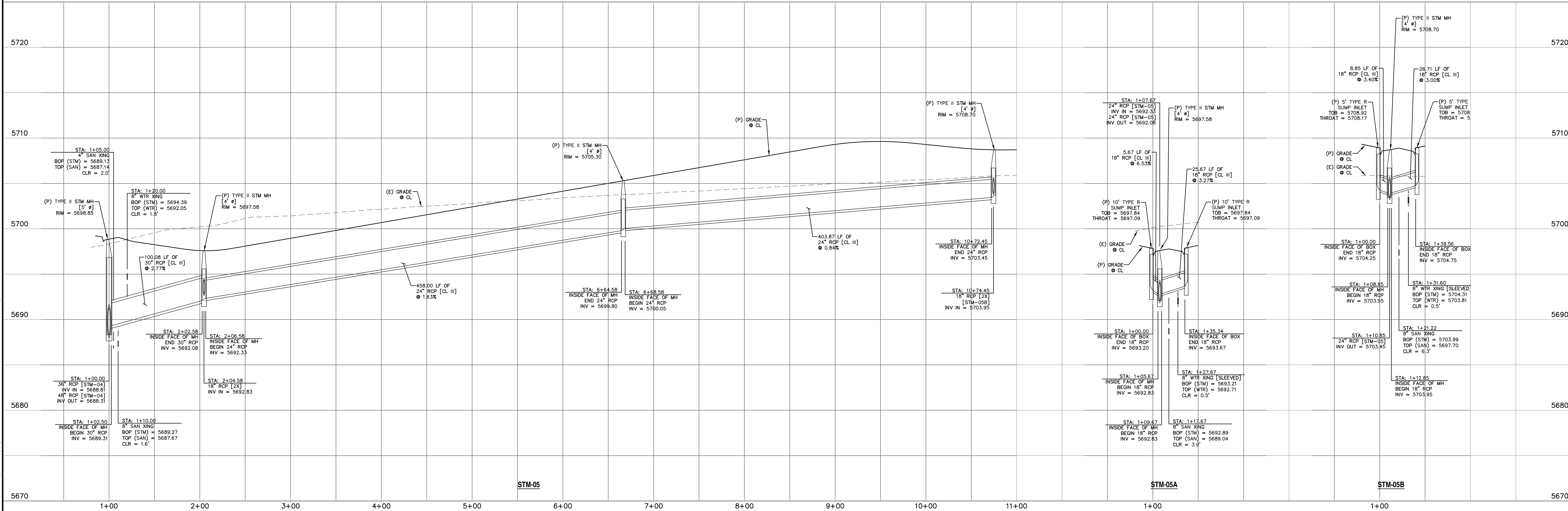
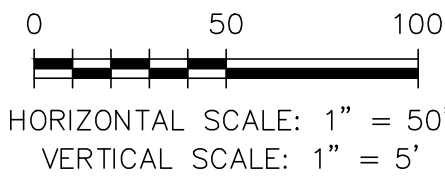




LINE TABLE		
LINE	BEARING	DISTANCE
L36	N0° 24' 11"W	100.08
L37	S89° 35' 49"W	5.67
L38	N89° 35' 49"E	25.67
L39	N0° 24' 11"W	458.00
L40	N0° 24' 11"W	403.87
L41	N45° 24' 11"W	8.85
L42	N74° 06' 14"E	26.71



LOCATION MAP  
SCALE: N.T.S.



REV.	DESCRIPTION	DATE

Know what's below.  
Call 72 hours before you dig.  
For more details visit:  
www.call811.com

PREPARED FOR:  
AVATAR EQUITIES, LLC  
6800 JERICHO TURNPIKE  
SUITE 120W #204  
SYOSSET, NY 11791

PREPARED UNDER MY DIRECT SUPERVISION FOR AND BEHALF OF CATAMOUNT ENGINEERING.  
DAVID L. MIJARES, COLORADO PE #40510  
DATE

CATAMOUNT ENGINEERING  
321 W. HENRIETTA AVE  
PO BOX 221  
WOODLAND PARK, CO 80866  
(719) 428-2124

RIVERBEND CROSSING  
FILING NO. 1  
STORM SEWER  
PLAN & PROFILE

DESIGNED BY: MGP  
SCALE: 1" = 50'  
JOB NUMBER: 17-114

DRAWN BY: MGP  
DATE: 02/10/20  
SHEET: 10 OF 14

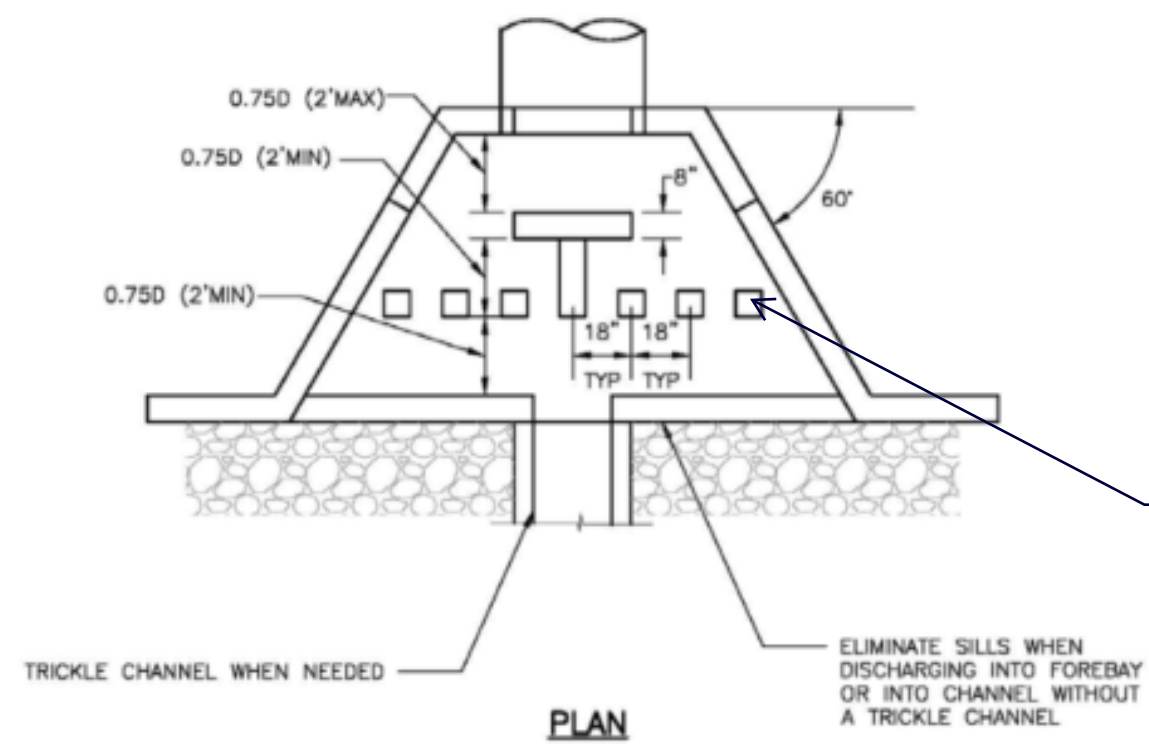






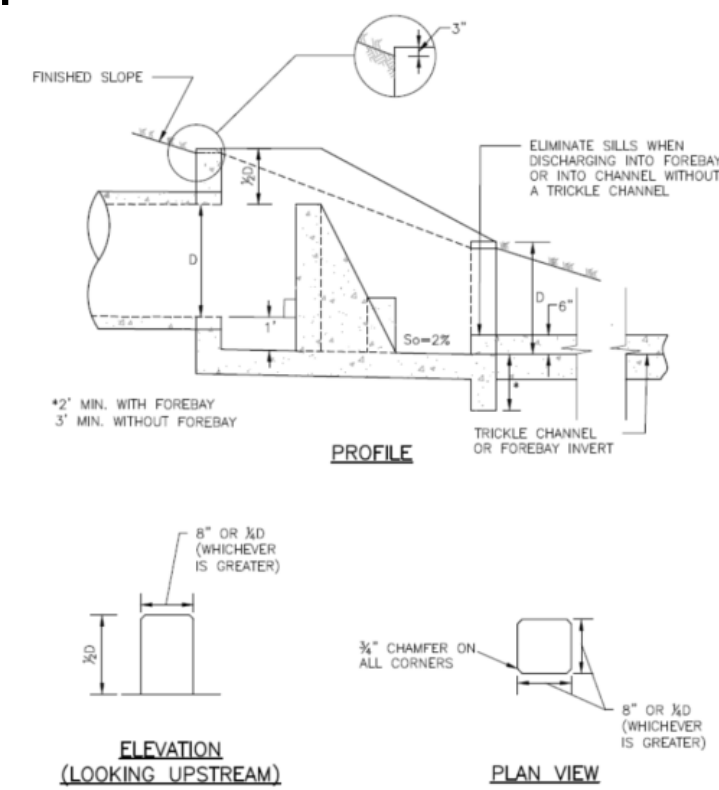






NOTE: DESIGN OF REINFORCING STEEL IS THE RESPONSIBILITY OF THE DESIGN ENGINEER.

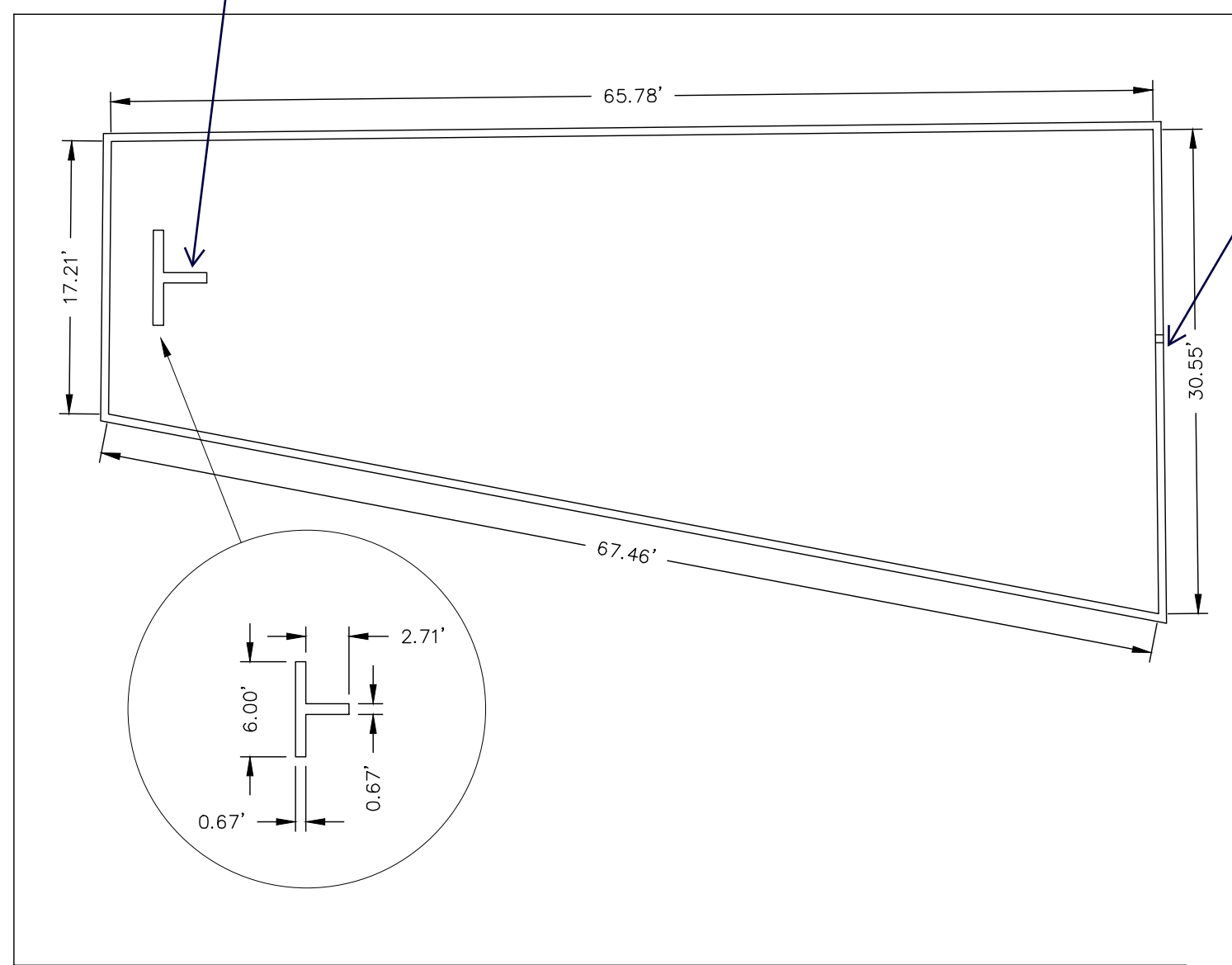
Are these not required?



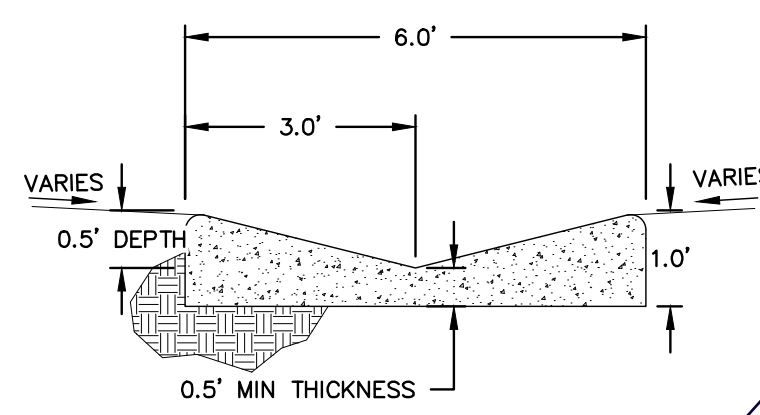
LEGEND	
EXISTING	(E)
PROPOSED	(P)
CURB AND GUTTER	C&G
BOUNDARY	---
RIGHT-OF-WAY	---
LOT LINE	---
(E) CONTOUR, INDEX	---
(E) CONTOUR	---
(P) CONTOUR, INDEX	---
(P) CONTOUR	---
(E) STORM SEWER	---
(P) STORM SEWER	---

provide additional detail for the baffel structure. Provide calculation in the drainage report.

provide detail of notch. Identify notch location to match with the trickle channel.

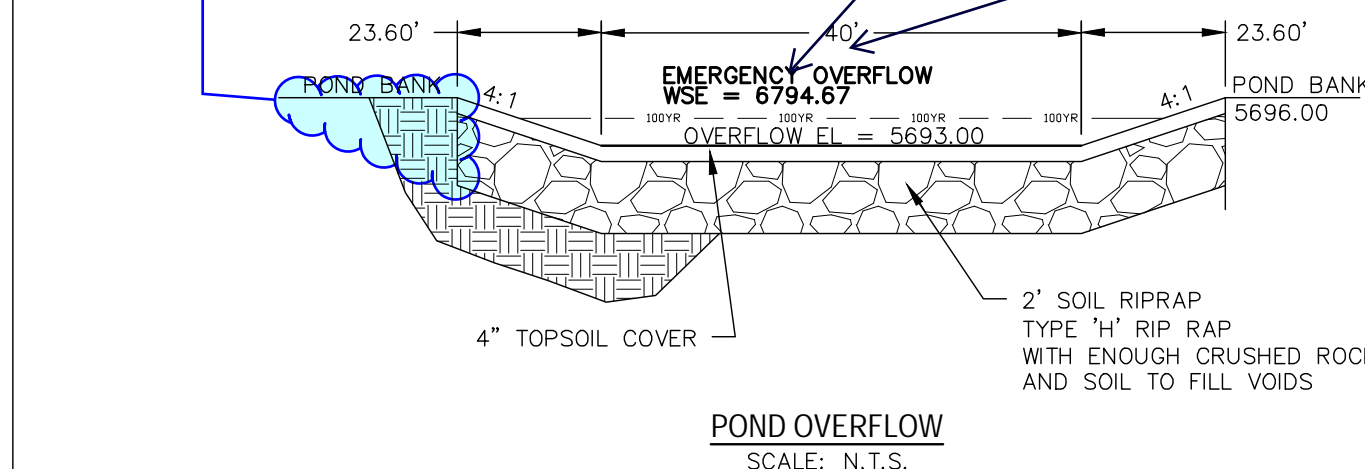


FOREBAY 'A' DETAIL  
SCALE: N.T.S.



LOW FLOW CHANNEL  
SCALE: N.T.S.

Revise to continue the 4:1 to the top of bank. Unresolved.



User Input: Emergency Spillway (Rectangular or Trapezoidal)  
Spillway Invert Stage = 1.00 (relative to basin bottom at Stage = 0 ft)  
Spillway Crest Length = 50.00 feet  
Spillway End Slopes = 4.00 H:V  
Freeboard above Max Water Surface = 1.00 feet

Calculated Parameters for Spillway  
Spillway Design Flow Depth = 9.94 feet  
Stage at Top of Freeboard = 9.94 feet  
Basin Area at Top of Freeboard = 1.97 acres

Update spillway cross section. Does not match the design.

Provide profile cross section detail of the emergency spillway. The riprap must extend beyond the top of the channel. Unresolved.

LINE TABLE		
LINE	BEARING	DISTANCE
L1	N86° 45' 28.49"W	125.95

CURVE TABLE			
CURVE	DELTA	RADIUS	LENGTH
C1	91°21'53"	209.81	334.57

Label ramp slope. Update to show contours.

5688  
Fix pond grading. Contours and elevations does not match.

Revise location of slope. Do not overlap other writing, typ. all

Fix grading. 5692 & 5694 contours are missing.

Add bar scale

Identify as Extended Detention Basin. This pond is designed for both WQ and Detention.

REV.	DESCRIPTION	DATE



Know what's below.  
Call 72 hours before you dig.  
For more details visit:  
www.call811.com

PREPARED FOR:  
AVATAR EQUITIES, LLC  
6800 JERICHO TURNPIKE  
SUITE 120W #204  
SYOSSET, NY 11791

PREPARED UNDER MY DIRECT SUPERVISION FOR AND BEHALF OF CATAMOUNT ENGINEERING.  
DAVID L. MIJARES, COLORADO PE #40510  
DATE



RIVERBEND CROSSING  
FILING NO. 1  
STORMWATER QUALITY  
FACILITY DETAILS

DESIGNED BY:	DLM	DRAWN BY:	MGP
SCALE:	1" = 30'	DATE:	02/10/20
JOB NUMBER	17-114	SHEET	13 OF 14



