

Added Spot Elevations and Slope Call-outs to Ped. Ramps at each intersection;
All Ped. Ramp cross-slopes are 2.00% or less.

Added additional Radii call-outs for the knuckle FL.

Added call-outs and a detail with spot elevations and slope call-out

Label as temporary cul-de-sac. Provide construction details, (line/curve data, grading, etc)

Added

Show/label the obstruction the sidewalk is going around.

PARALLEL PED RAMP (REF: SD 2-41 & SD 2-42)
** PARALLEL PED RAMP (REF: SD 2-50)
STANDARD CROSSSPAN (REF: SD 2-26)

Added P&P sheet

Provide construction P&P sheet along Southmoor Dr. to include demo plan showing the limits for full asphalt cut and mill/overlay.

Provide typical cross section along Southmoor Dr.

Adjusted

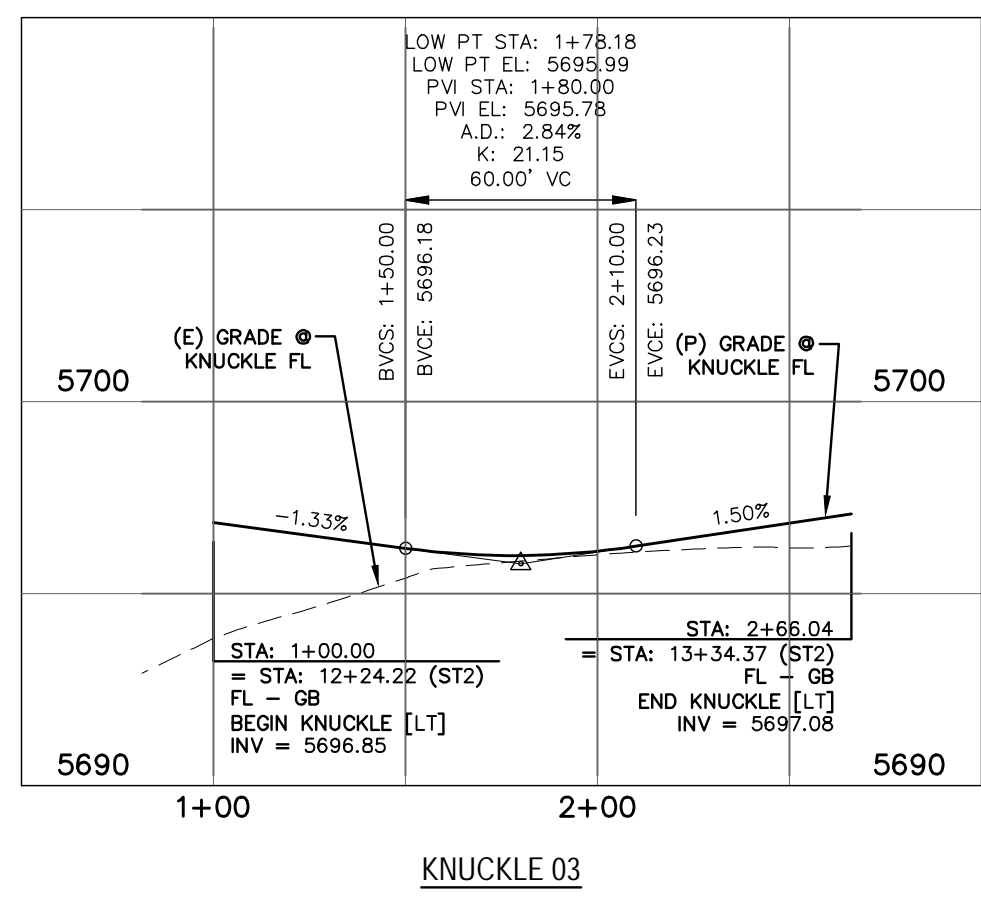
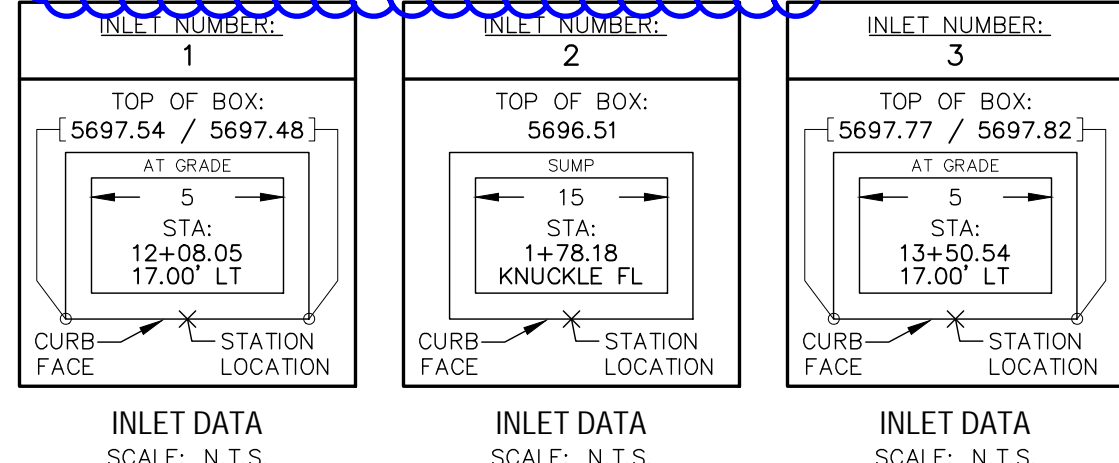
Road profile must be latter at the intersections where ADA crossings are provided in order to meet the ADA criteria for cross slopes (2% max). Typ. all.

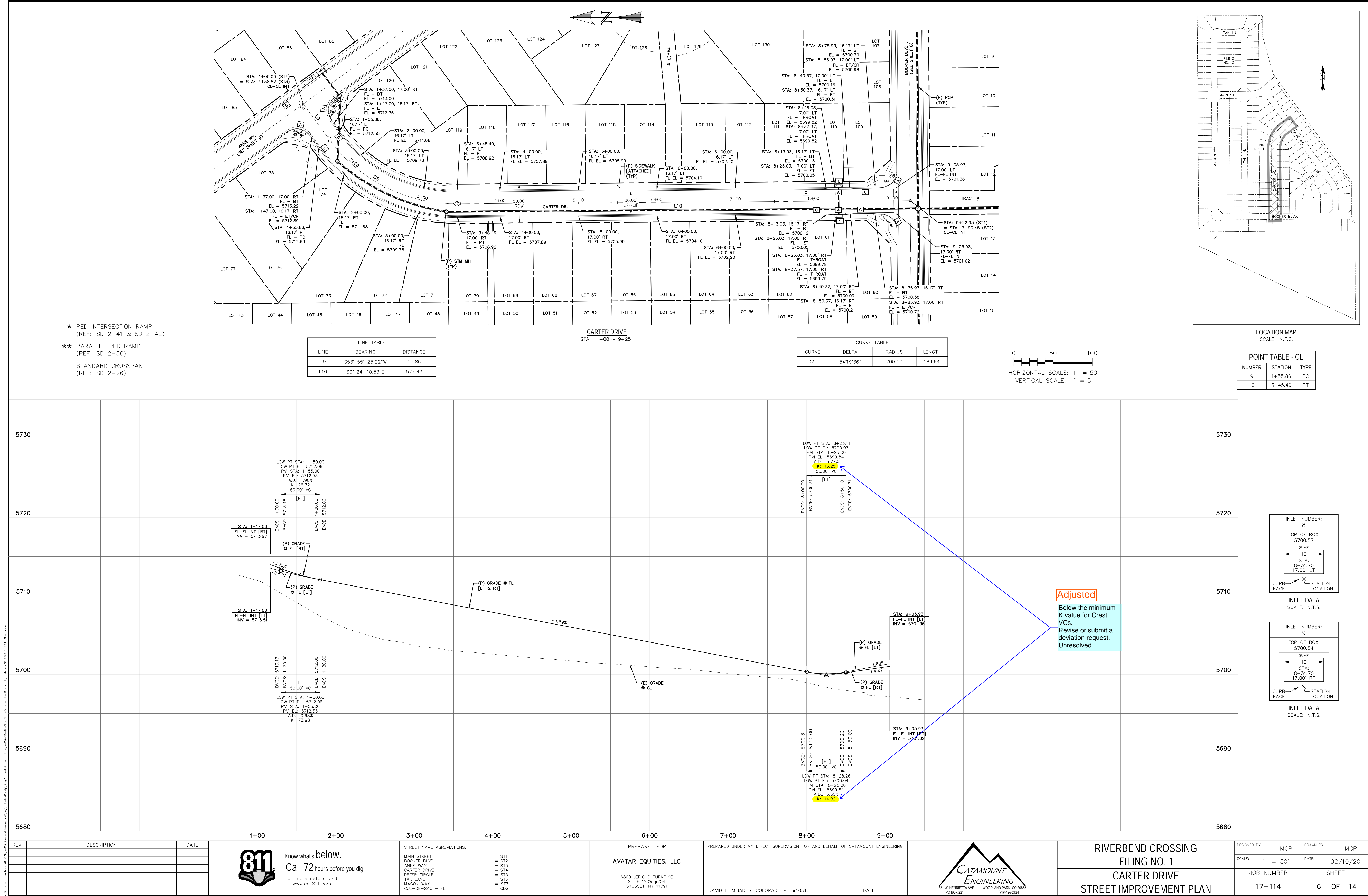
Stop condition

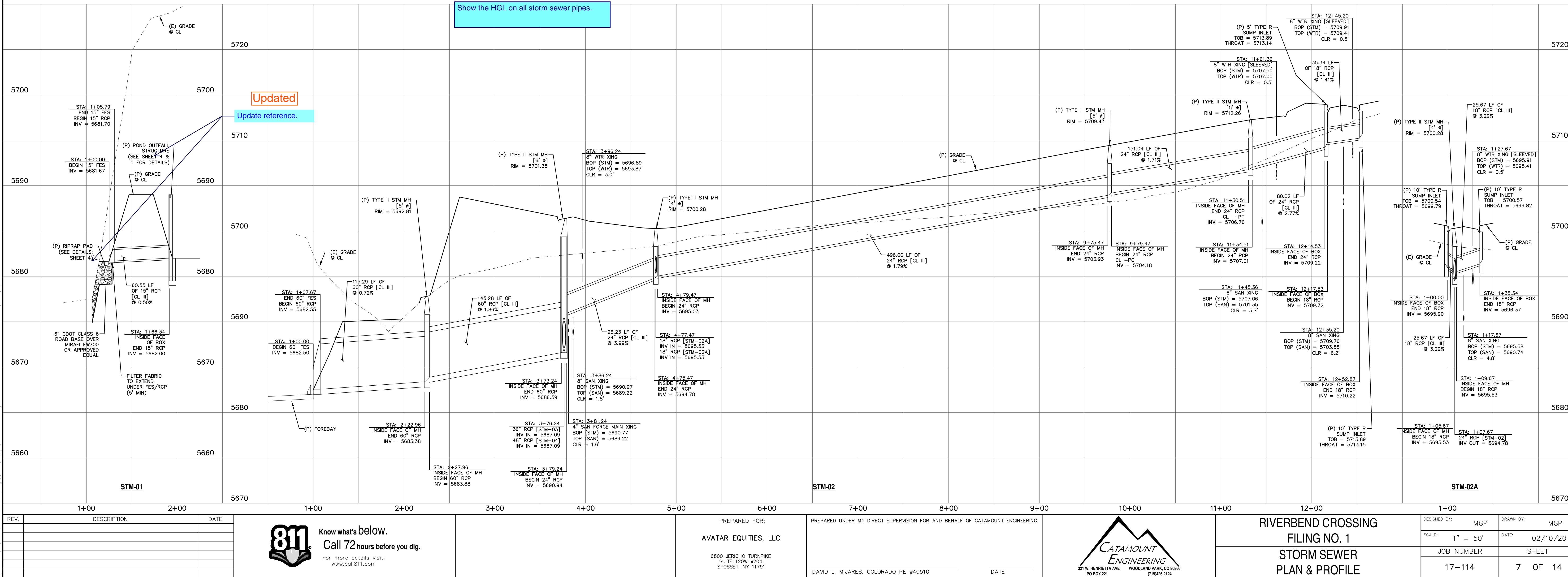
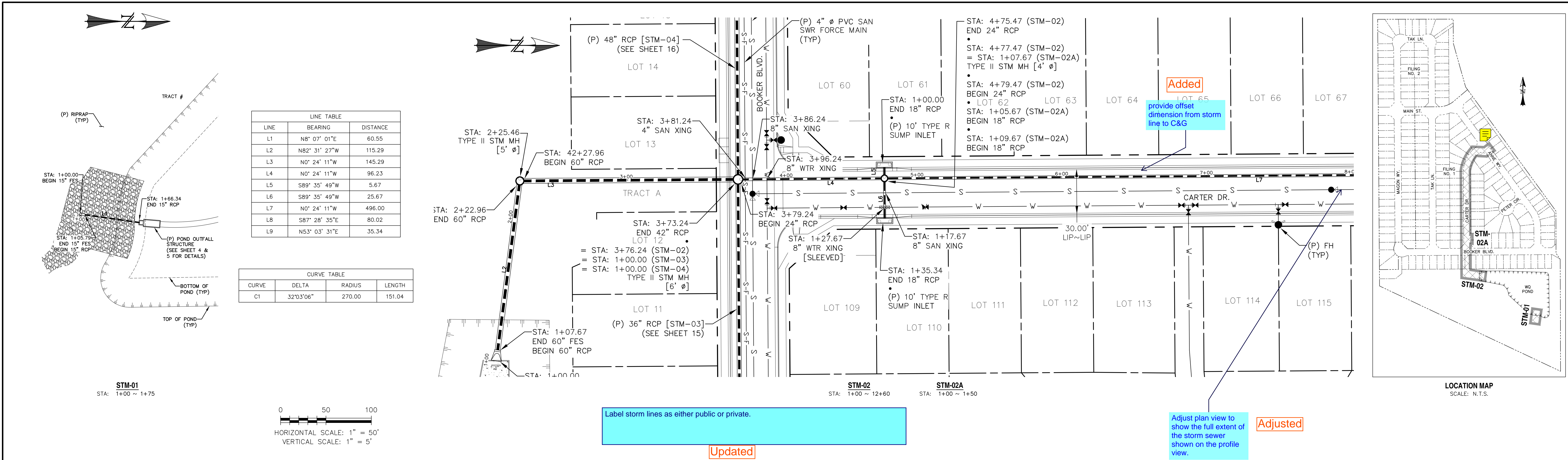
Below the minimum K value for Crest VCs. Revise or submit a deviation request.

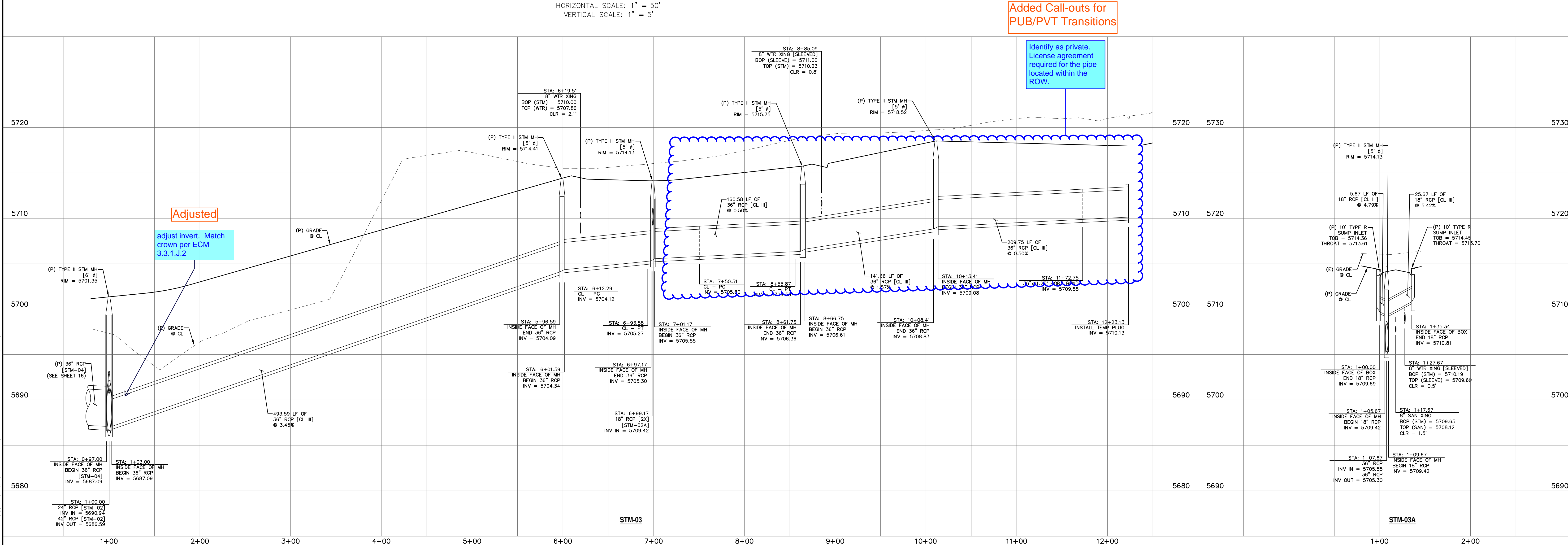
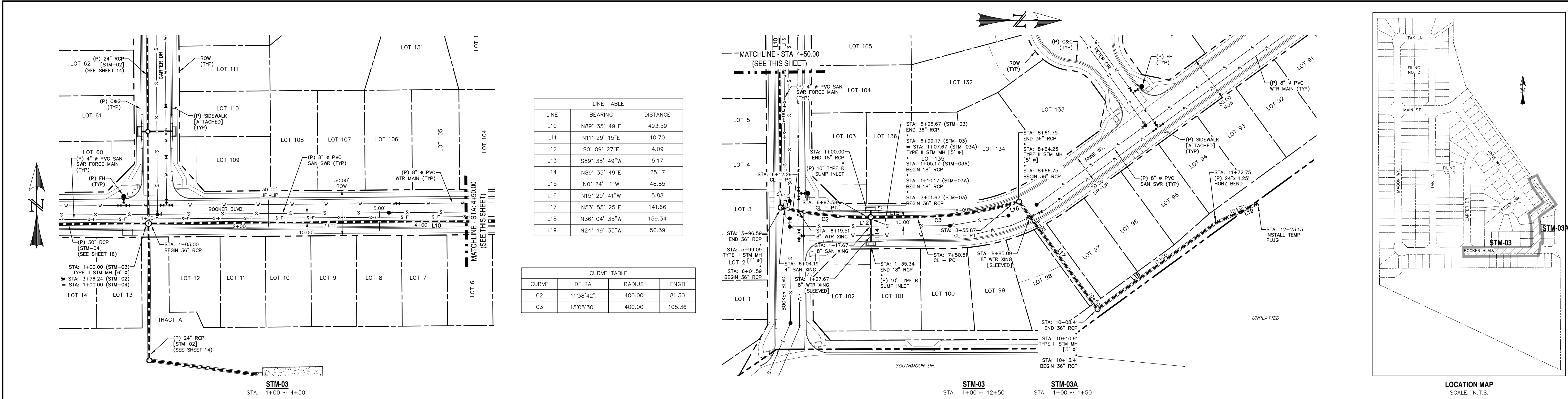
Below the minimum K value for a Sag VC. Revise or submit a deviation request.

Adjusted









Provide construction plans for the private storm pipe/area drain along the rear lot lines of Basin B17.

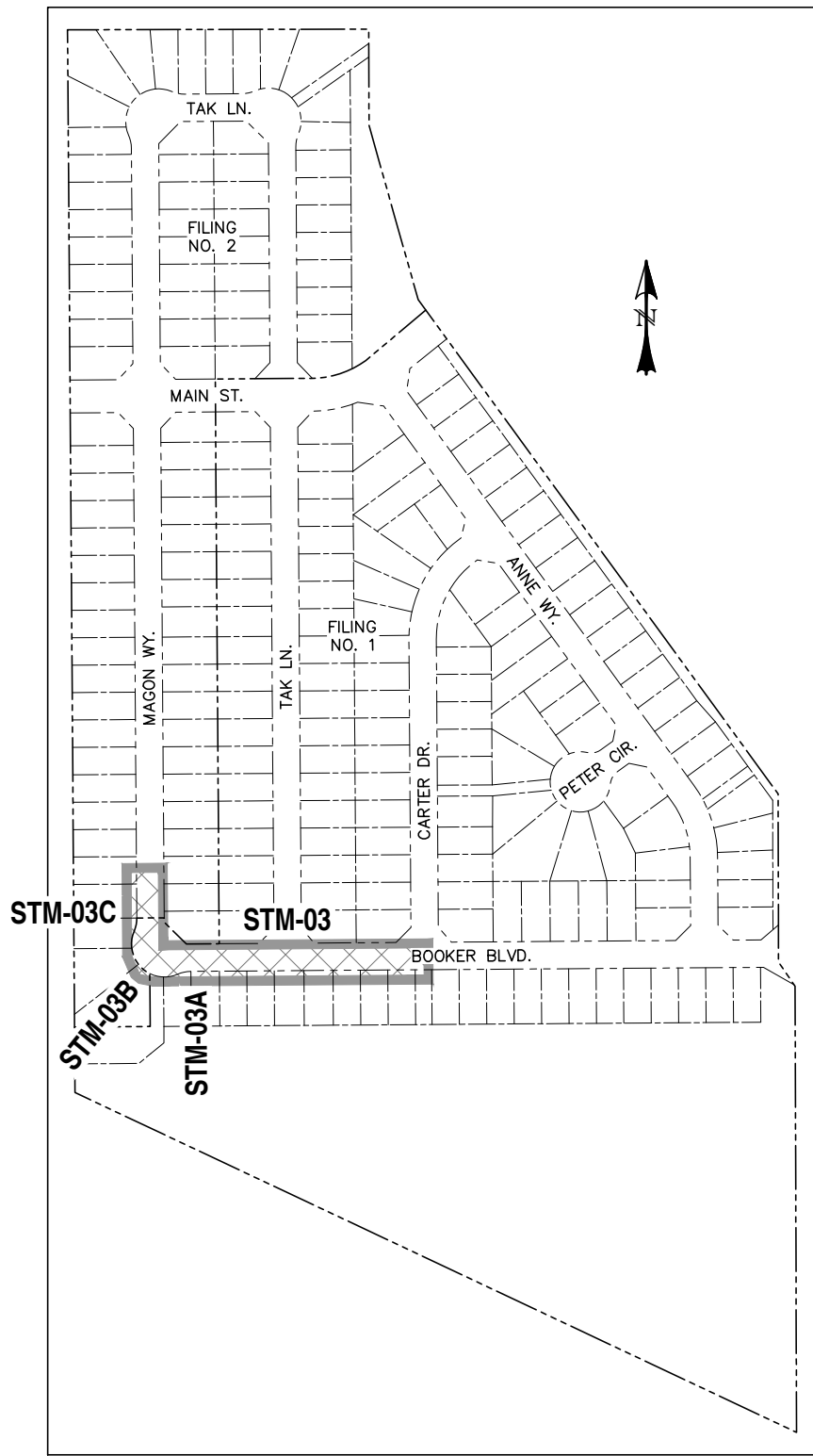
For a 12" HDPE Pvt Pipe??

Revise. Drainage report notes 20" inlet.

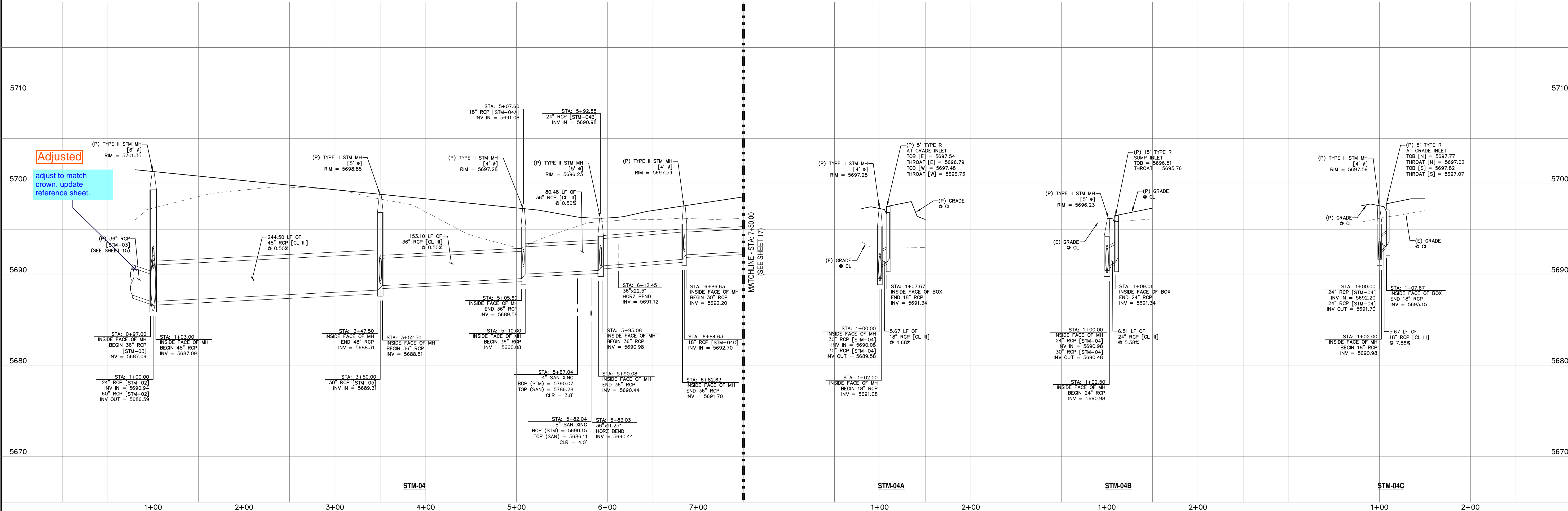
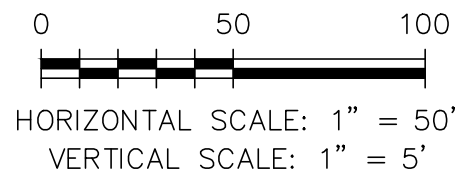
Based on the inlet location, Filing 2 Lot 1 does not have a viable inlet location. Revise the design.

Calc'ed as a 15" in Drainage Report

LINE TABLE		
LINE	BEARING	DISTANCE
L20	S89° 35' 49"W	244.50
L21	S89° 35' 49"W	153.10
L22	S0° 24' 11"E	5.67
L23	S89° 35' 49"W	73.43
L24	N79° 09' 11"W	7.05
L25	S39° 10' 47"W	6.51
L26	N22° 54' 11"W	17.37
L27	N0° 24' 11"W	70.18
L28	S89° 35' 49"W	5.67
L29	N0° 24' 11"W	257.43



LOCATION MAP
SCALE: N.T.S.



REV.	DESCRIPTION	DATE

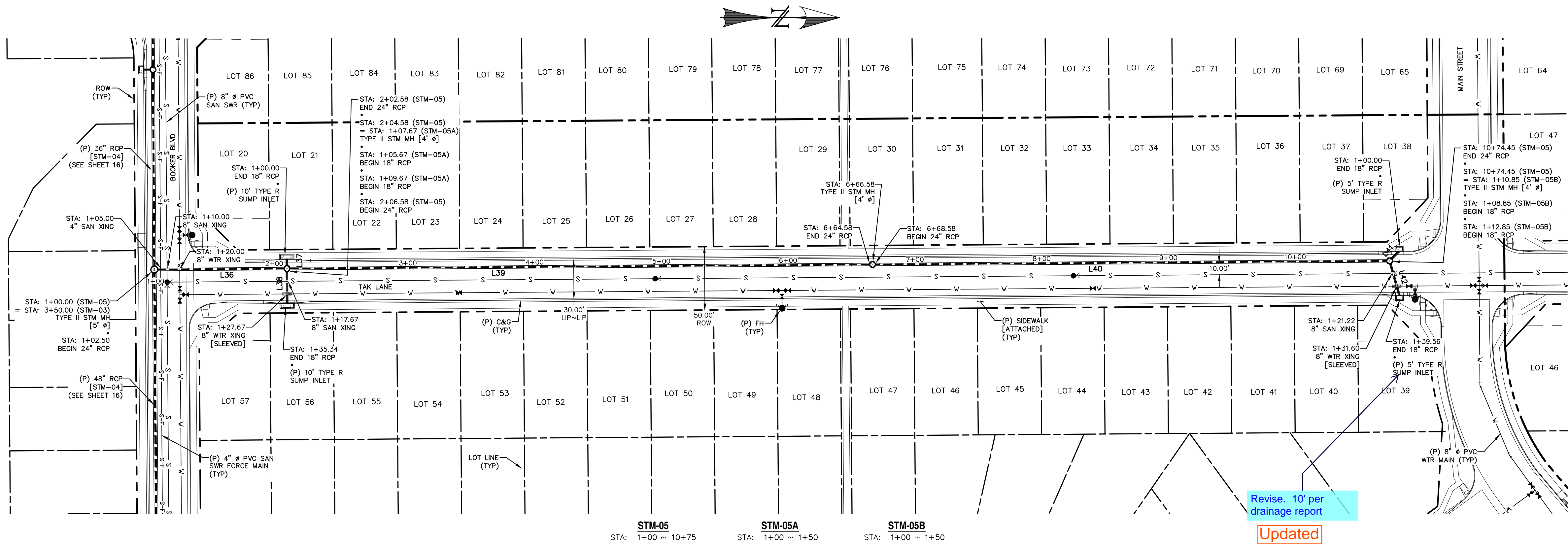
811	Know what's below. Call 72 hours before you dig. For more details visit: www.call811.com
-----	---

PREPARED FOR:	AVATAR EQUITIES, LLC
6800 JERICHO TURNPIKE SUITE 120W #204 SYOSSET, NY 11791	

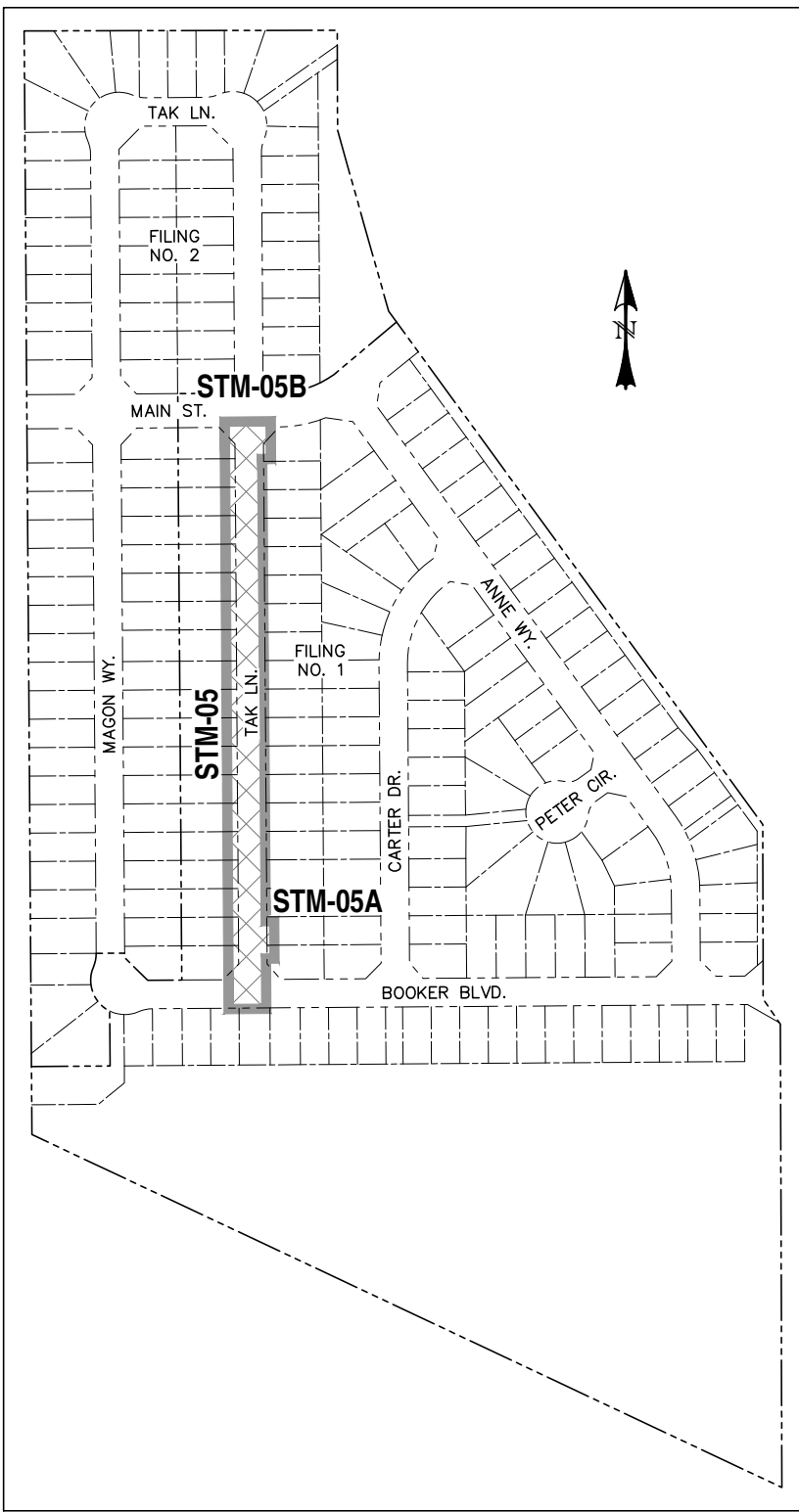
PREPARED UNDER MY DIRECT SUPERVISION FOR AND BEHALF OF CATAMOUNT ENGINEERING.	DAVID L. MIJARES, COLORADO PE #40510	DATE
---	--------------------------------------	------

CATAMOUNT ENGINEERING	321 W. HENRIETTA AVE PO BOX 221	WOOLAND PARK, CO 80866 (719) 428-2124
-----------------------	------------------------------------	--

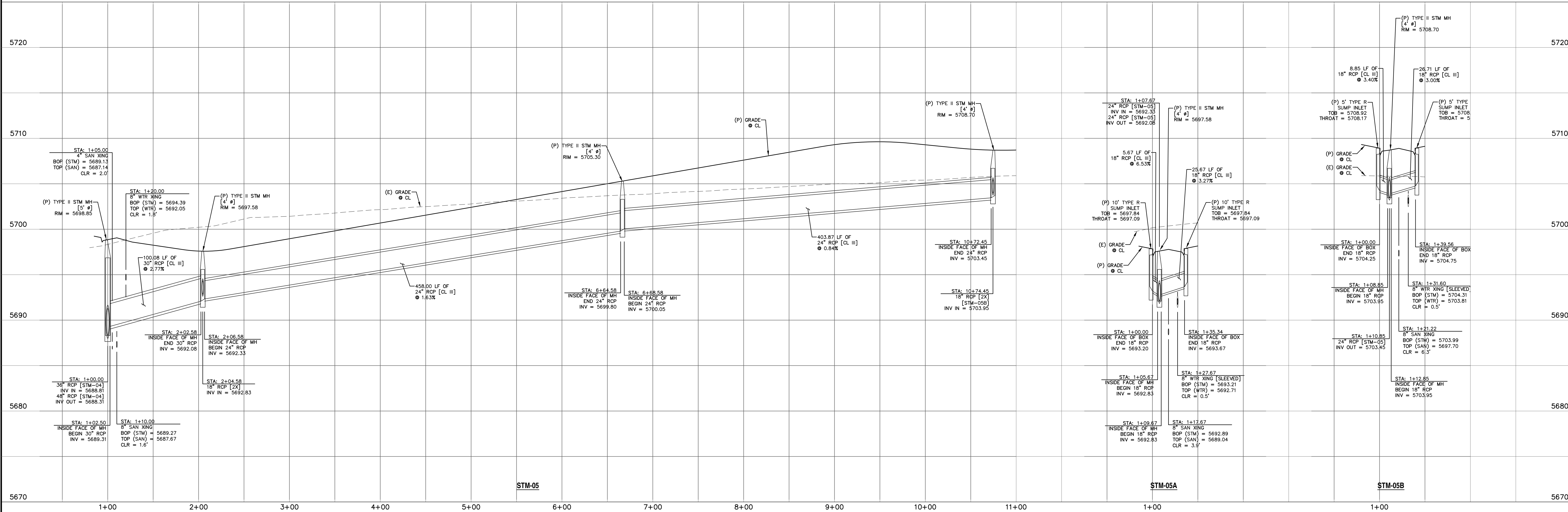
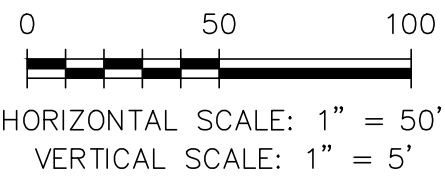
RIVERBEND CROSSING FILING NO. 1 STORM SEWER PLAN & PROFILE	DESIGNED BY: MGP SCALE: 1" = 50' JOB NUMBER: 17-114	DRAWN BY: MGP DATE: 02/10/20 SHEET: 9 OF 14
---	---	---



LINE TABLE		
LINE	BEARING	DISTANCE
L36	N0° 24' 11"W	100.08
L37	S89° 35' 49"W	5.67
L38	N89° 35' 49"E	25.67
L39	N0° 24' 11"W	458.00
L40	N0° 24' 11"W	403.87
L41	N45° 24' 11"W	8.85
L42	N74° 06' 14"E	26.71



LOCATION MAP
SCALE: N.T.S.



REV.	DESCRIPTION	DATE

811 Know what's below.
Call 72 hours before you dig.
For more details visit:
www.call811.com

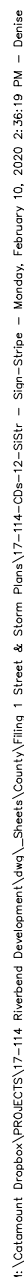
PREPARED FOR:
AVATAR EQUITIES, LLC
6800 JERICHO TURNPIKE
SUITE 120W #204
SYOSSET, NY 11791

PREPARED UNDER MY DIRECT SUPERVISION FOR AND BEHALF OF CATAMOUNT ENGINEERING.
DAVID L. MIJARES, COLORADO PE #40510
DATE

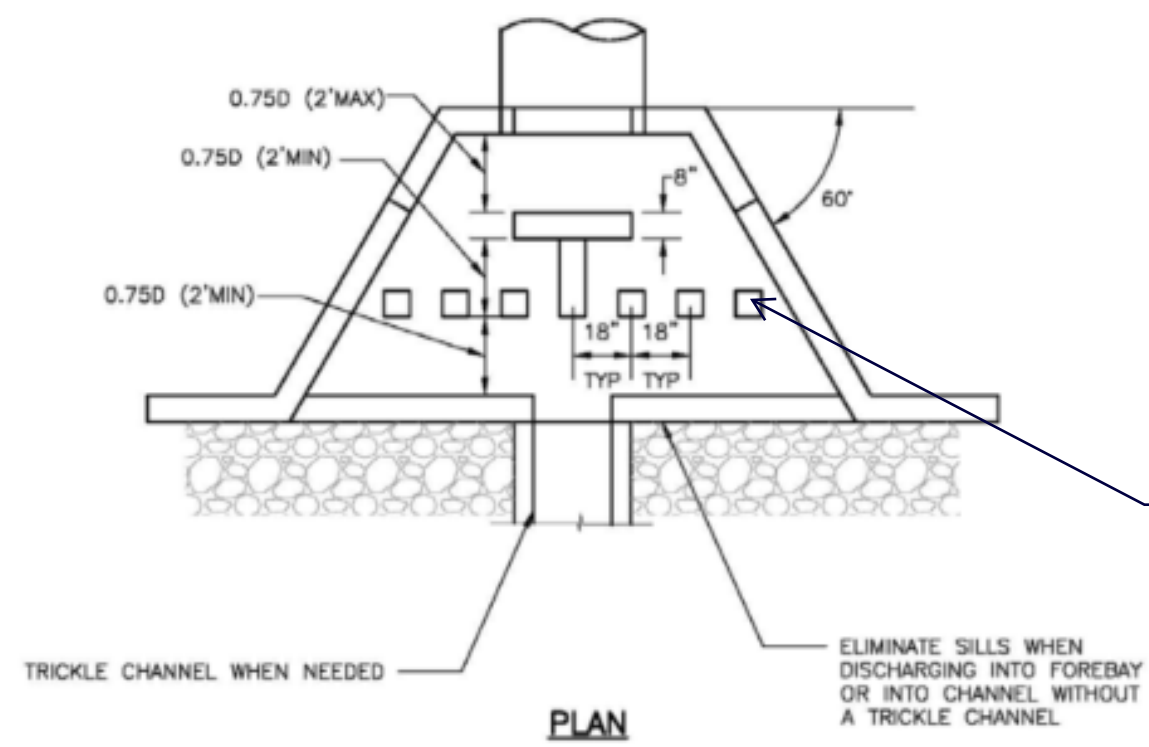


RIVERBEND CROSSING
FILING NO. 1
STORM SEWER
PLAN & PROFILE

DESIGNED BY: MGP	DRAWN BY: MGP
SCALE: 1" = 50'	DATE: 02/10/20
JOB NUMBER	SHEET
17-114	10 OF 14

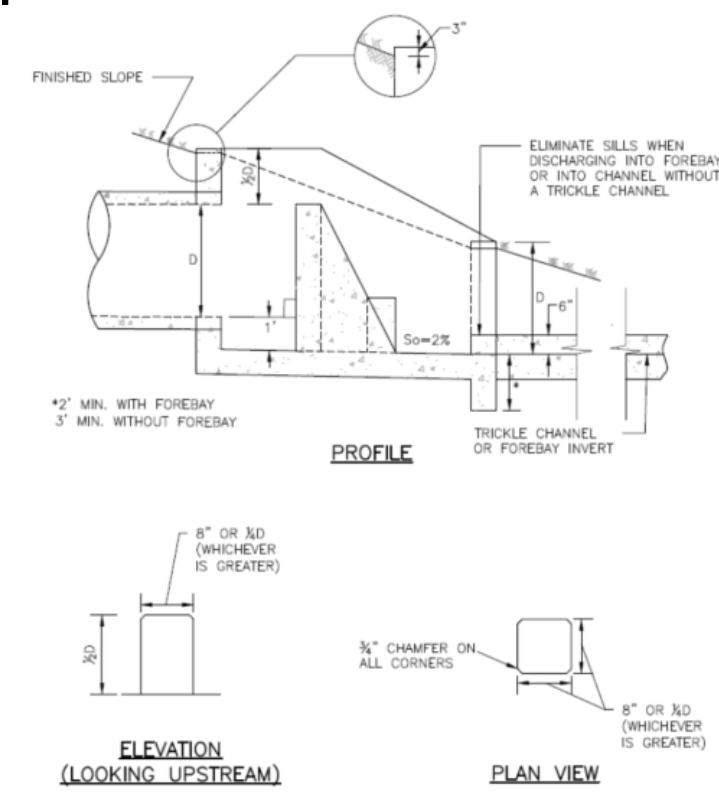


DESIGNED BY: MGP	DRAWN BY: MGP
SCALE: 1" = 50'	DATE: 02/10/20
JOB NUMBER	SHEET
17-114	12 OF 14



NOTE: DESIGN OF REINFORCING STEEL IS THE RESPONSIBILITY OF THE DESIGN ENGINEER.

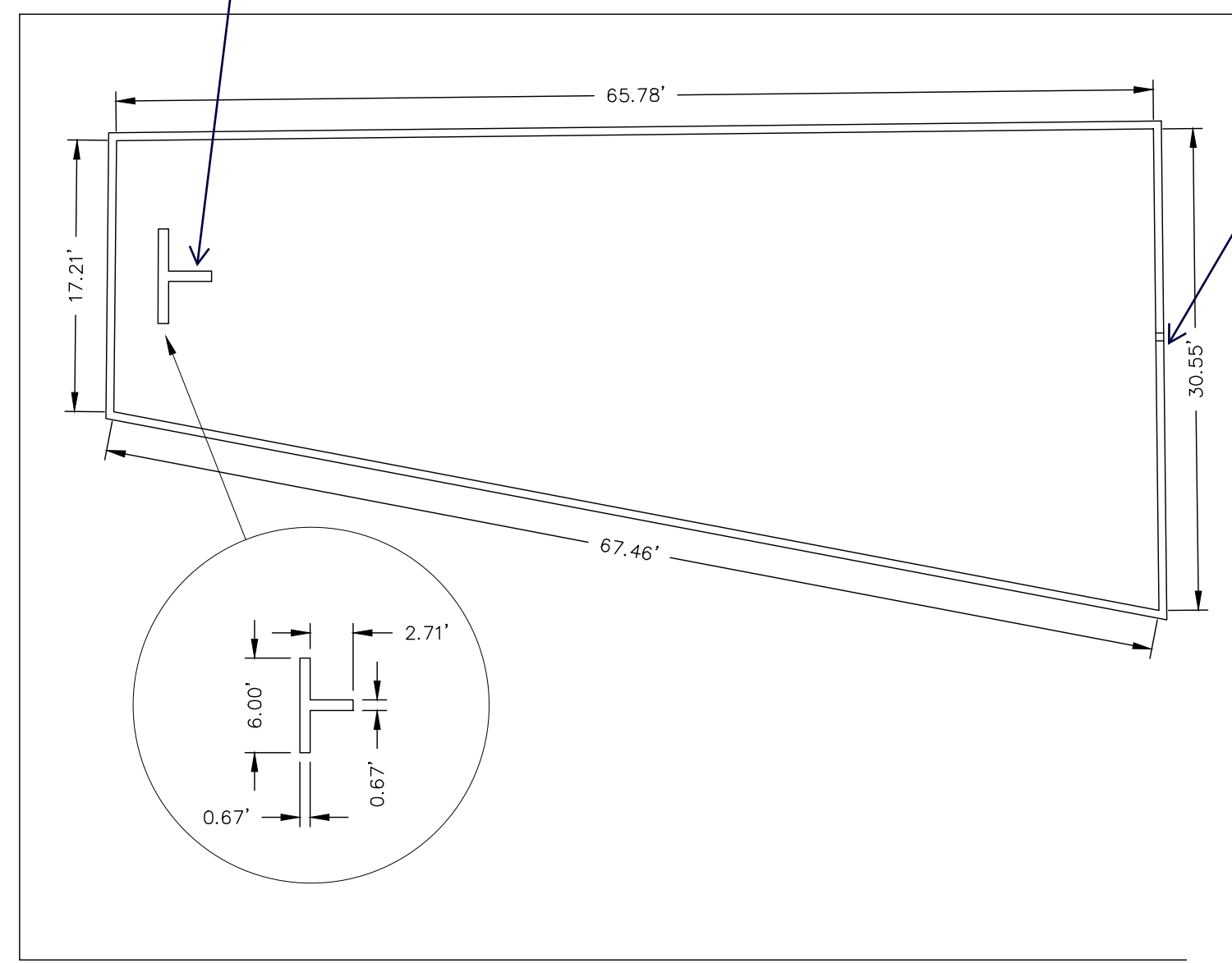
Are these not required?



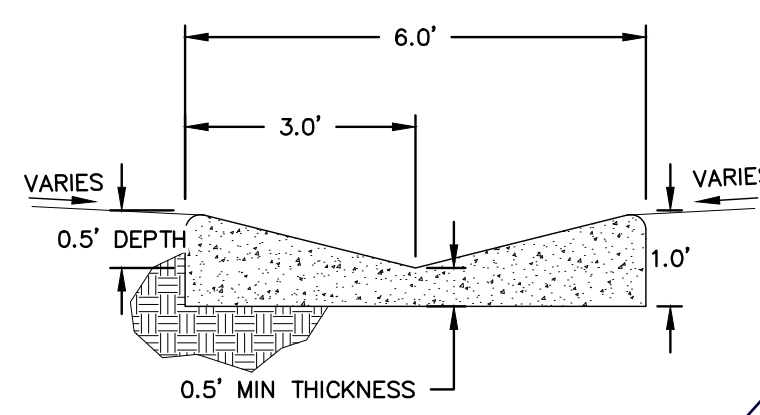
LEGEND	
EXISTING	(E)
PROPOSED	(P)
CURB AND GUTTER	C&G
BOUNDARY	---
RIGHT-OF-WAY	---
LOT LINE	---
(E) CONTOUR, INDEX	---
(E) CONTOUR	---
(P) CONTOUR, INDEX	---
(P) CONTOUR	---
(E) STORM SEWER	---
(P) STORM SEWER	---

provide additional detail for the bafel structure. Provide calculation in the drainage report.

provide detail of notch. Identify notch location to match with the trickle channel.

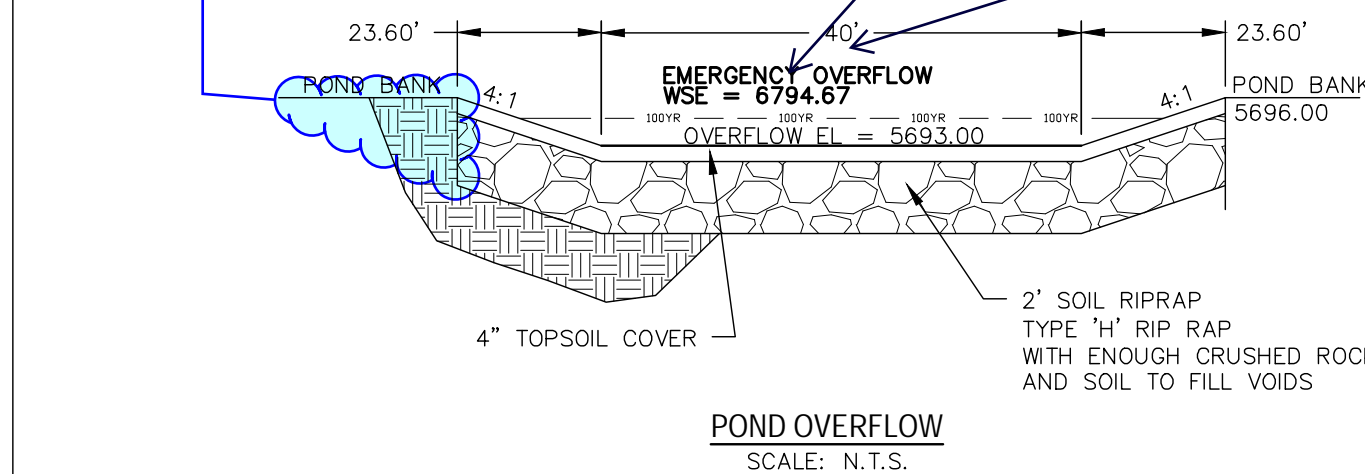


FOREBAY 'A' DETAIL
SCALE: N.T.S.



LOW FLOW CHANNEL
SCALE: N.T.S.

Revise to continue the 4:1 to the top of bank. Unresolved.



User Input: Emergency Spillway (Rectangular or Trapezoidal)
Spillway Invert Stage = 1.00 (relative to basin bottom at Stage = 0 ft)
Spillway Crest Length = 50.00 feet
Spillway End Slopes = 4.00 H:V
Freeboard above Max Water Surface = 1.00 feet

Calculated Parameters for Spillway
Spillway Design Flow Depth = 9.94 feet
Stage at Top of Freeboard = 9.94 feet
Basin Area at Top of Freeboard = 1.97 acres

Update spillway cross section. Does not match the design.

Provide profile cross section detail of the emergency spillway. The riprap must extend beyond the top of the channel. Unresolved.

LINE TABLE		
LINE	BEARING	DISTANCE
L1	N86° 45' 28.49"W	125.95

CURVE TABLE			
CURVE	DELTA	RADIUS	LENGTH
C1	91°21'53"	209.81	334.57

Label ramp slope. Update to show contours.

5688
Fix pond grading. Contours and elevations does not match.

Revise location of slope. Do not overlap other writing, typ. all

Fix grading. 5692 & 5694 contours are missing.

Add bar scale

Identify as Extended Detention Basin. This pond is designed for both WQ and Detention.

REV.	DESCRIPTION	DATE



Know what's below.
Call 72 hours before you dig.
For more details visit:
www.call811.com

PREPARED FOR:
AVATAR EQUITIES, LLC
6800 JERICHO TURNPIKE
SUITE 120W #204
SYOSSET, NY 11791

PREPARED UNDER MY DIRECT SUPERVISION FOR AND BEHALF OF CATAMOUNT ENGINEERING.
DAVID L. MIJARES, COLORADO PE #40510
DATE



RIVERBEND CROSSING
FILING NO. 1
STORMWATER QUALITY
FACILITY DETAILS

DESIGNED BY:	DLM	DRAWN BY:	MGP
SCALE:	1" = 30'	DATE:	02/10/20
JOB NUMBER	17-114	SHEET	13 OF 14

