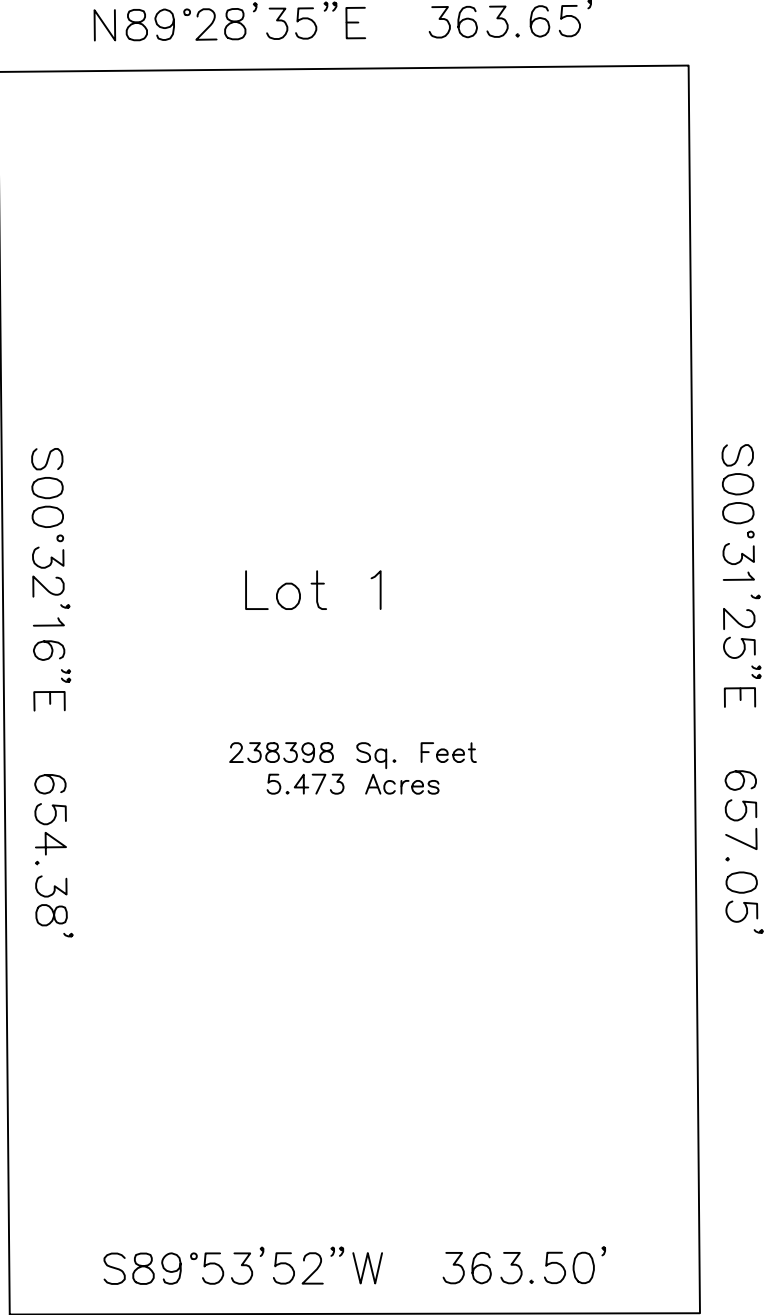


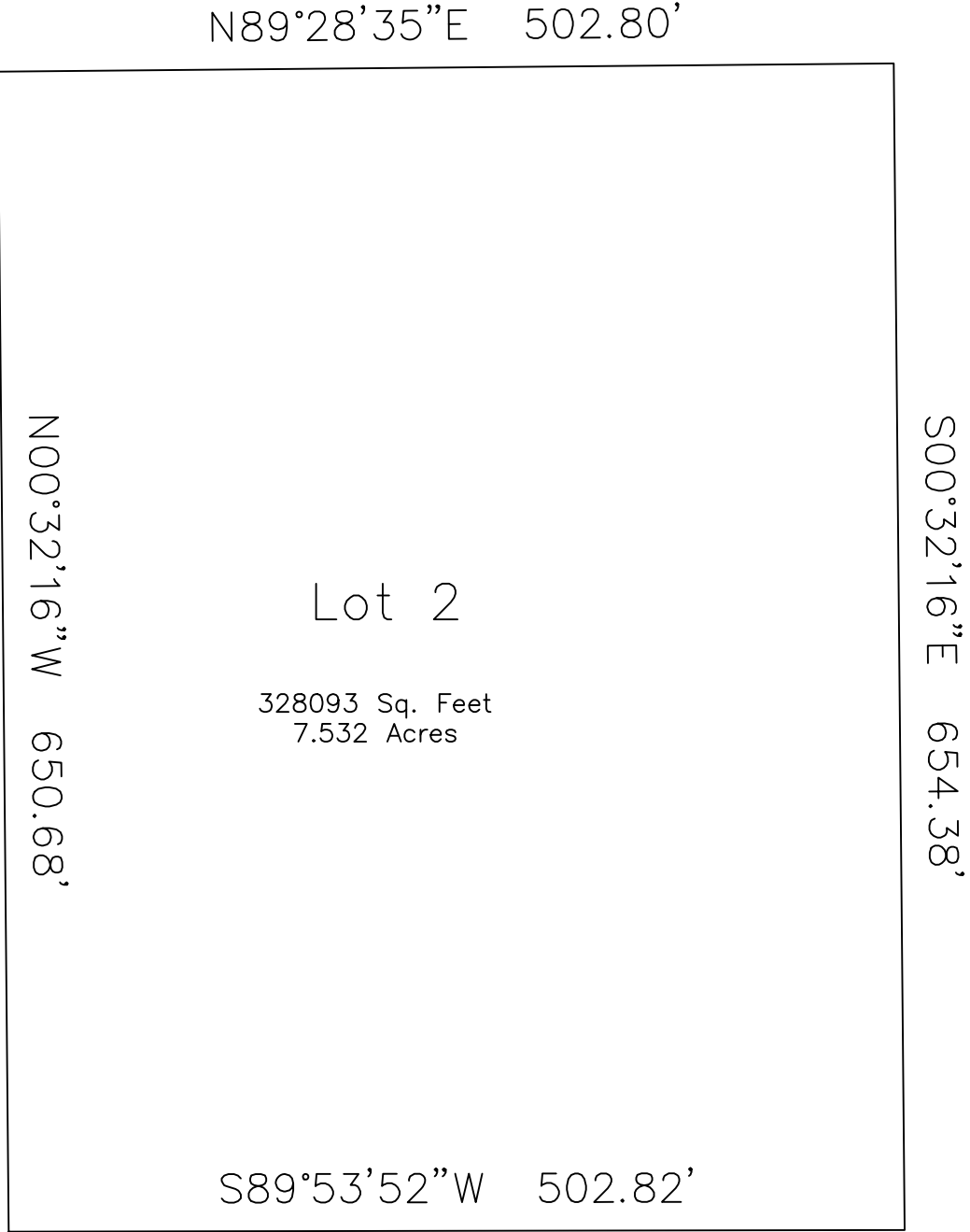
BOUNDARY

Inverse With Area				Tue, Jun 10 2025 9:13:28 AM	
PntNo	Bearing	Distance	Northing	Easting	Description
			17261.04	28487.48	
	N00°25'39"W	1324.46	18585.46	28477.60	
	S89°57'15"E	1976.28	18583.88	30453.88	
	S00°31'25"E	1319.37	17264.57	30465.94	
	S89°53'52"W	1978.46	17261.04	28487.48	
Closure Error Distance> 0.0000					
Total Distance Inversed> 6598.57					
Area: 2613832 Sq. Feet, 60.005 Acres					

2613832 Sq. Feet
60.005 Acres



Inverse With Area					Tue, Jun 10 2025 2:36:34 PM
PntNo	Bearing	Distance	Northing	Easting	Description
			15917.67	37476.90	
	N00°32'16"W	654.38	16572.02	37470.76	
	N89°28'35"E	363.65	16575.34	37834.39	
	S00°31'25"E	657.05	15918.32	37840.40	
	S89°53'52"W	363.50	15917.67	37476.90	
Closure Error Distance> 0.0000					
Total Distance Inversed> 2038.58					
Area: 238398 Sq. Feet, 5.473 Acres					



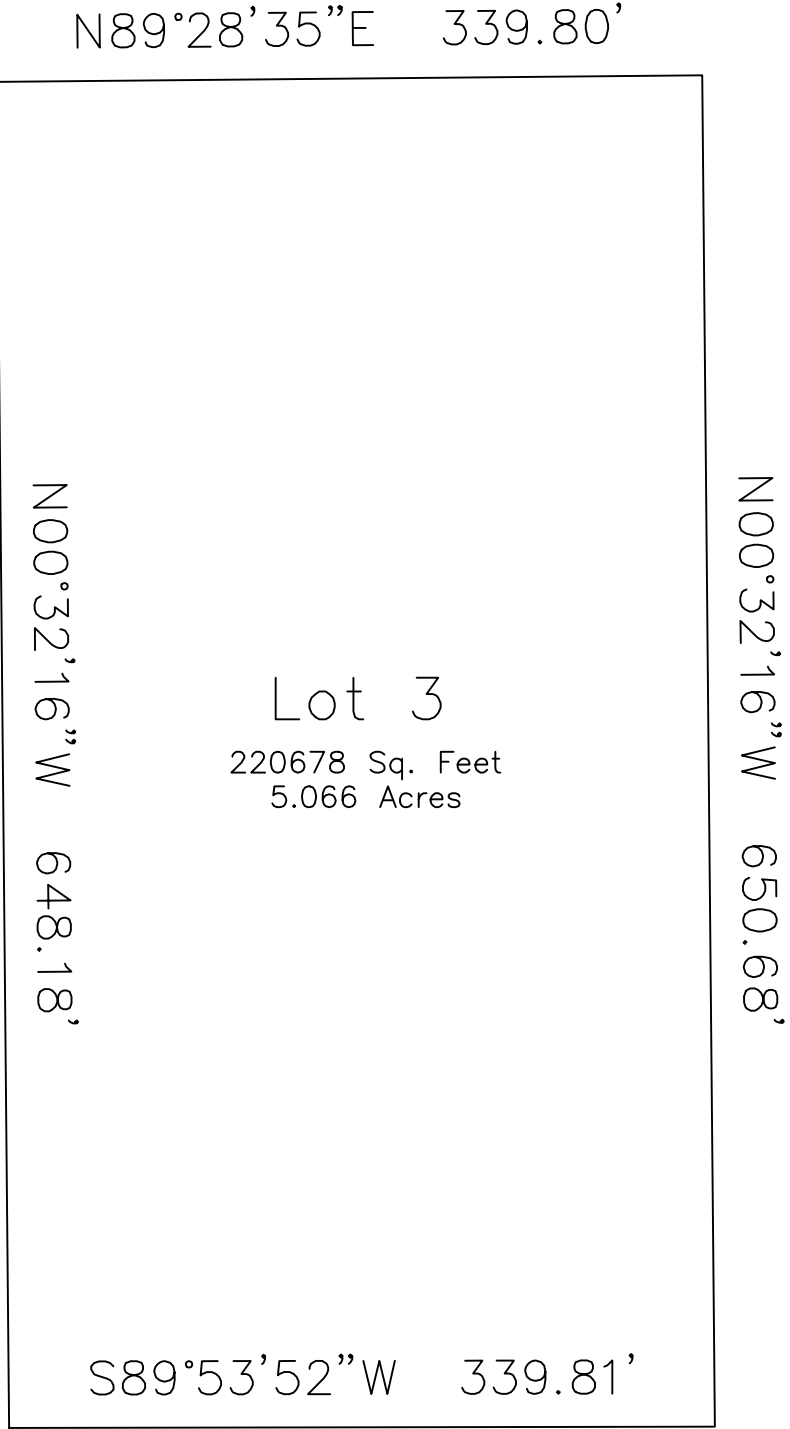
Inverse With Area

Tue, Jun 10 2025 2:37:31 PM

PntNo	Bearing	Distance	Northing	Easting	Description
			15857.15	35419.64	
	N00°32'16"W	650.68	16507.80	35413.53	
	N89°28'35"E	502.80	16512.40	35916.31	
	S00°32'16"E	654.38	15858.05	35922.45	
	S89°53'52"W	502.82	15857.15	35419.64	

Closure Error Distance> 0.0000
Total Distance Inversed> 2310.68

Area: 328093 Sq. Feet, 7.532 Acres



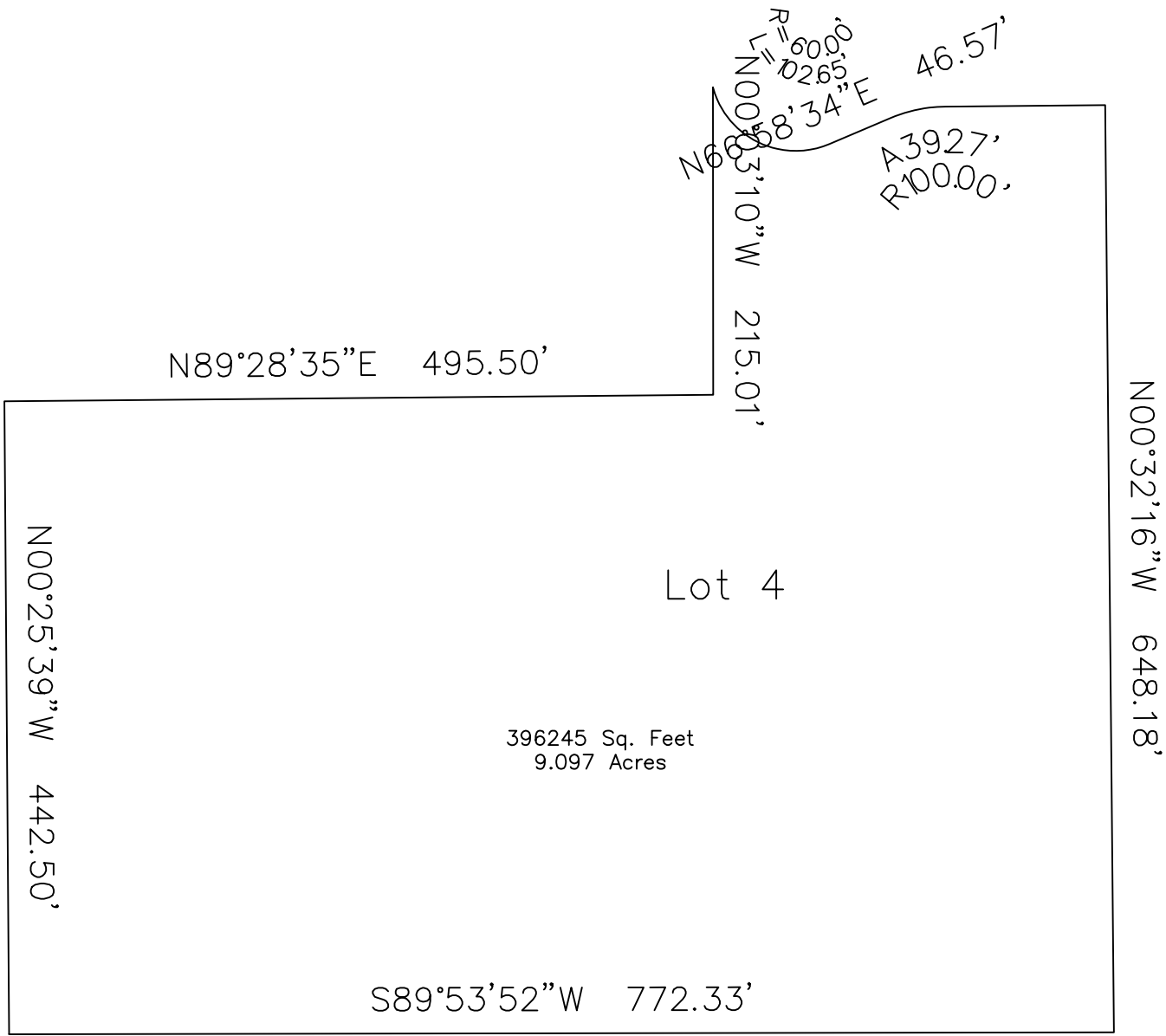
Inverse With Area

Tue, Jun 10 2025 2:38:15 PM

PntNo	Bearing	Distance	Northing	Easting	Description
			15787.42	33695.60	
	N00°32'16"W	648.18	16435.57	33689.52	
	N89°28'35"E	339.80	16438.68	34029.31	
	S00°32'16"E	650.68	15788.03	34035.42	
	S89°53'52"W	339.81	15787.42	33695.60	

Closure Error Distance> 0.0000
Total Distance Inversed> 1978.47

Area: 220678 Sq. Feet, 5.066 Acres



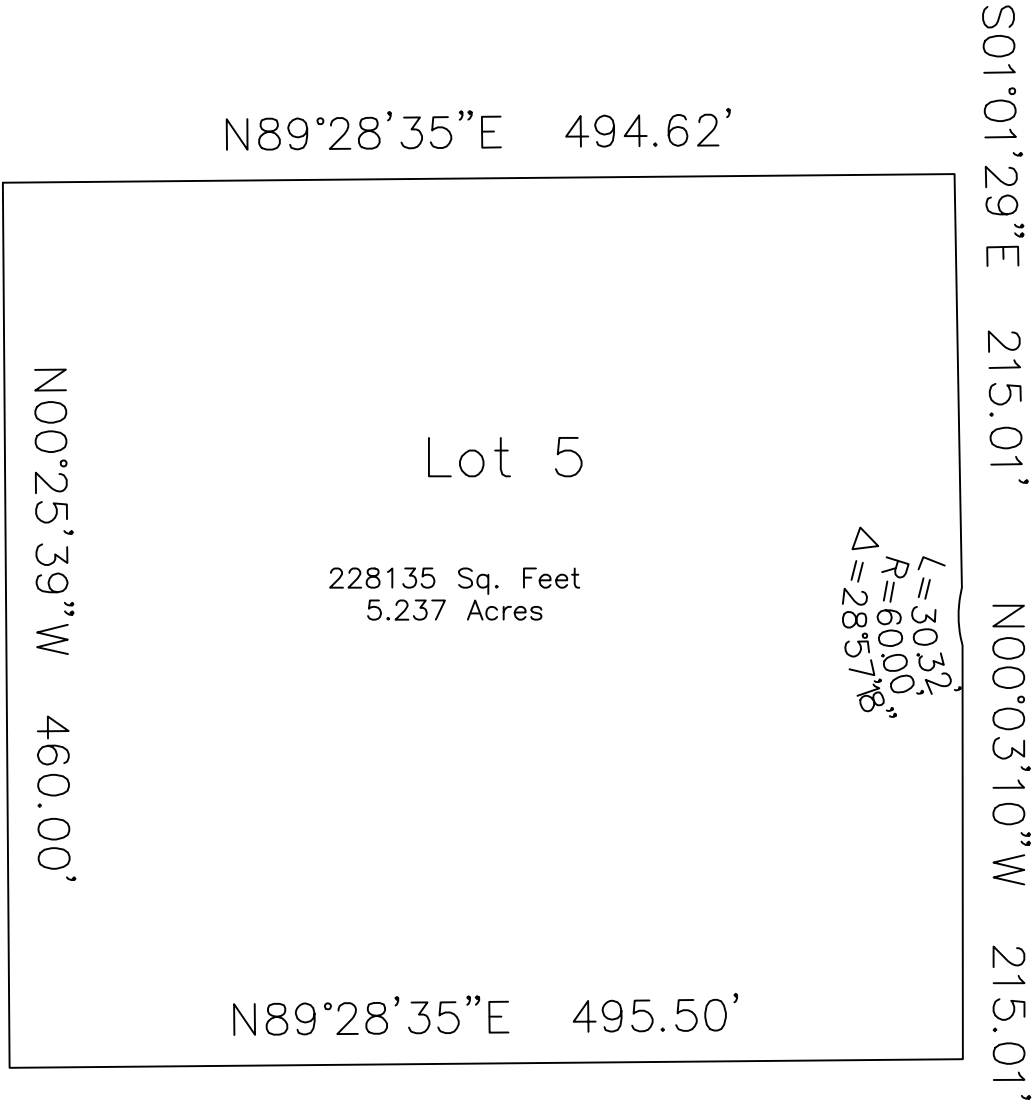
Inverse With Area

Tue, Jun 10 2025 2:39:11 PM

PntNo	Bearing	Distance	Northing	Easting	Description
			15858.87	31743.90	
	N00°25'39"W	442.50	16301.36	31740.60	
	N89°28'35"E	495.50	16305.88	32236.08	
	N00°03'10"W	215.01	16520.89	32235.89	
Radius: 60.00 Chord: 90.58 Degree: 95°29'35" Dir: Left					
Length: 102.65 Delta: 98°01'22" Tangent: 69.05					
Chord BRG: S64°00'45"E Rad-In: N74°59'56"E Rad-Out: N23°01'26"W					
Radius PntNo: N: 16536.42 E: 32293.84					
			16481.20	32317.31	
	N66°58'34"E	46.57	16499.41	32360.17	
Radius: 100.00 Chord: 39.02 Degree: 57°17'45" Dir: Right					
Length: 39.27 Delta: 22°30'01" Tangent: 19.89					
Chord BRG: N78°13'35"E Rad-In: S23°01'26"E Rad-Out: S00°31'25"E					
Radius PntNo: N: 16407.38 E: 32399.28					
			16507.38	32398.36	
	N89°28'35"E	111.79	16508.40	32510.15	
	S00°32'16"E	648.18	15860.25	32516.23	
	S89°53'52"W	772.33	15858.87	31743.90	

Closure Error Distance> 0.0000
Total Distance Inversed> 2873.79

Area: 396245 Sq. Feet, 9.097 Acres



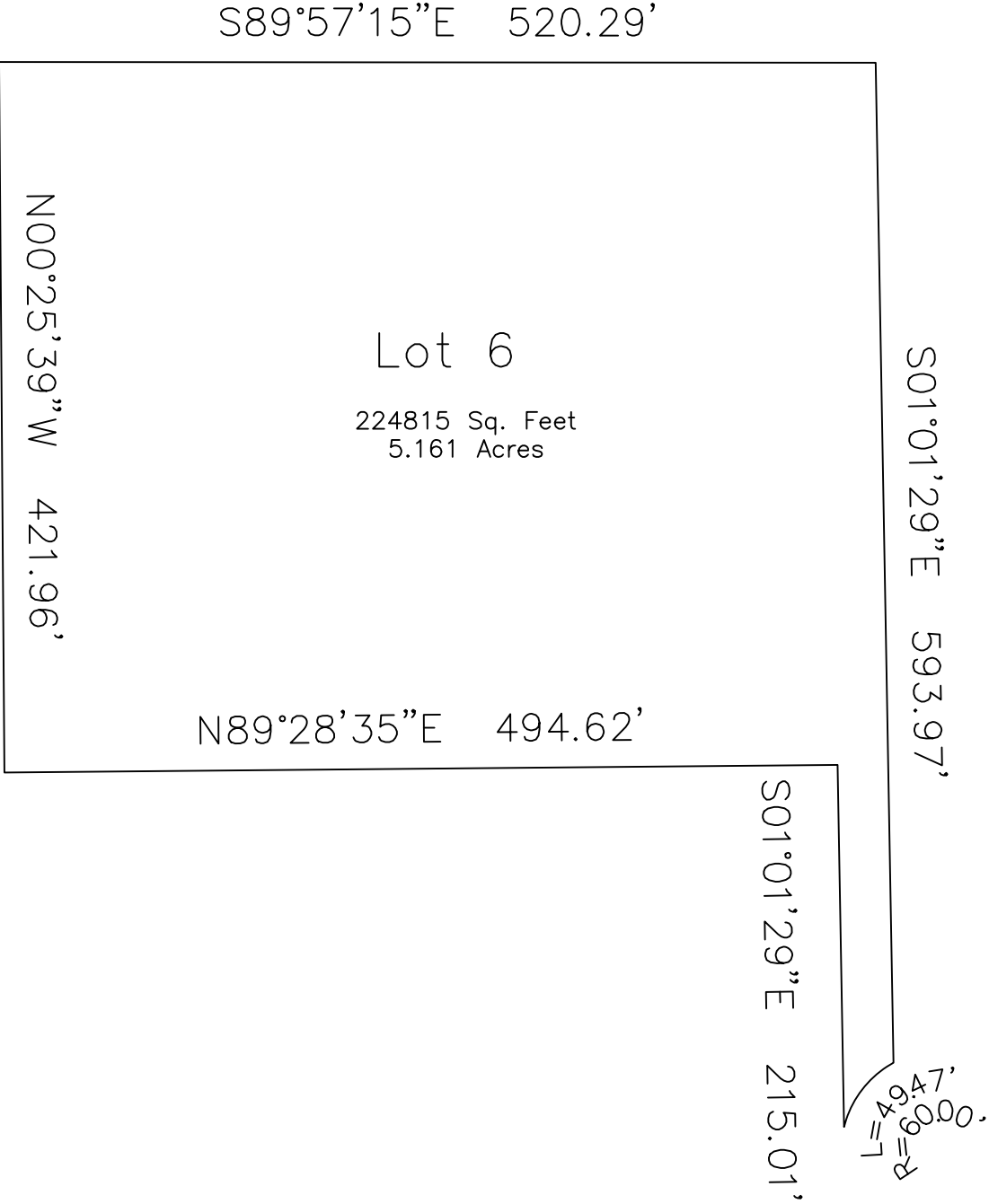
Inverse With Area

Tue, Jun 10 2025 2:42:03 PM

PntNo	Bearing	Distance	Northing	Easting	Description
			17551.99	31098.61	
	N89°28'35"E	494.62	17556.51	31593.20	
	S01°01'29"E	215.01	17341.54	31597.05	
	Radius: 60.00	Chord: 30.00	Degree: 95°29'35"	Dir: Left	
	Length: 30.32	Delta: 28°57'18"	Tangent: 15.49		
	Chord BRG: S00°31'25"E	Rad-In: S76°02'46"E	Rad-Out: N74°59'56"E		
	Radius PntNo: N: 17327.07	E: 31655.28	17311.54	31597.32	
	S00°03'10"E	215.01	17096.54	31597.52	
	S89°28'35"W	495.50	17092.01	31102.04	
	N00°25'39"W	460.00	17551.99	31098.61	

Closure Error Distance> 0.0000
Total Distance Inversed> 1910.46

Area: 228135 Sq. Feet, 5.237 Acres



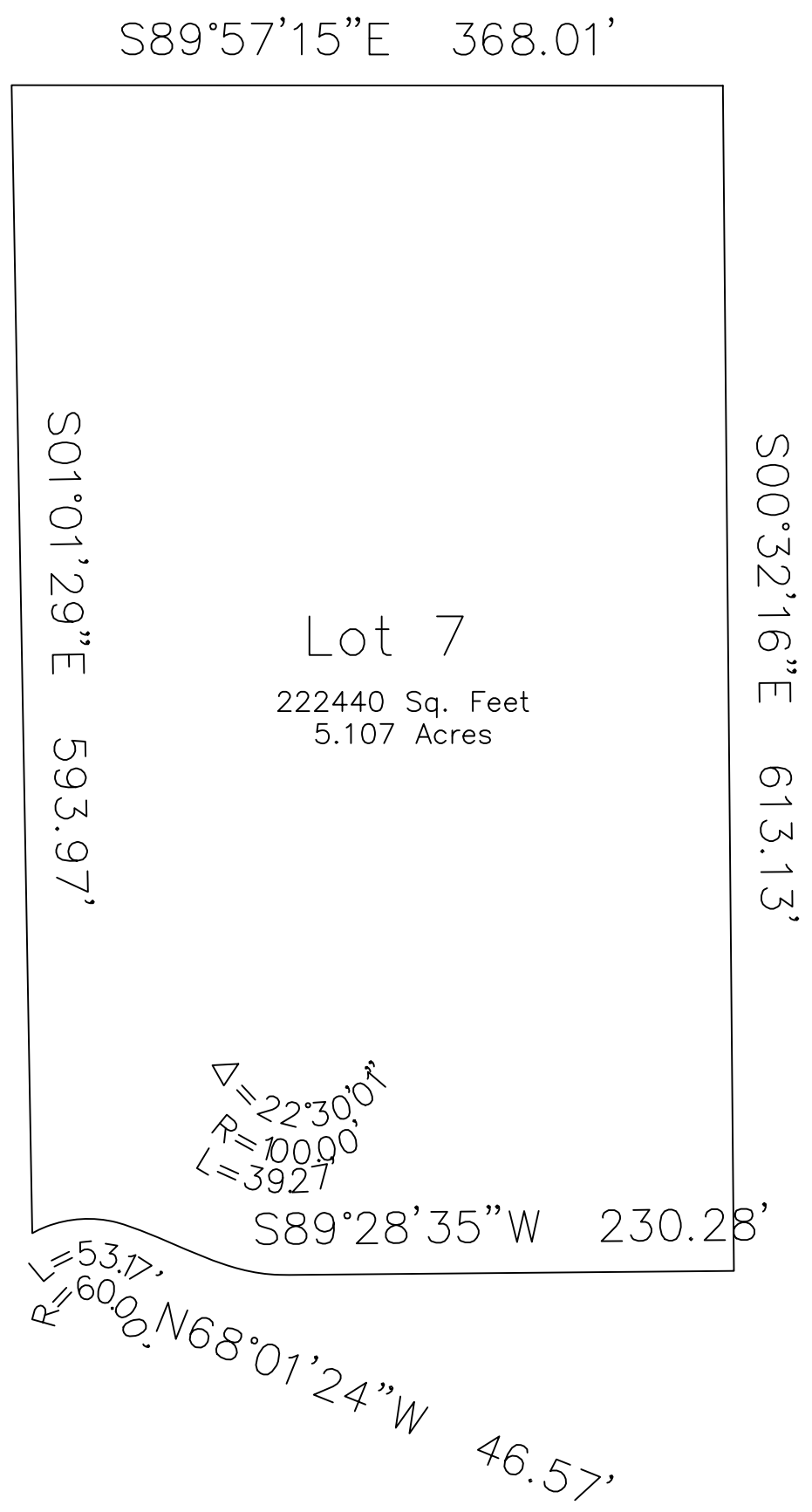
Inverse With Area

Tue, Jun 10 2025 2:29:50 PM

PntNo	Bearing	Distance	Northing	Easting	Description
			18541.45	31727.48	
	S89°57'15"E	520.29	18541.03	32247.76	
	S01°01'29"E	593.97	17947.15	32258.39	
	Radius: 60.00	Chord: 48.09	Degree: 95°29'35"	Dir: Left	
	Length: 49.47	Delta: 47°14'42"	Tangent: 26.24		
	Chord BRG: S37°34'35"W	Rad-In: S28°48'04"E	Rad-Out: S76°02'46"E		
	Radius PntNo: N: 17894.58	E: 32287.29			
			17909.05	32229.06	
	N01°01'29"W	215.01	18124.02	32225.22	
	S89°28'35"W	494.62	18119.50	31730.62	
	N00°25'39"W	421.96	18541.45	31727.48	

Closure Error Distance> 0.0000
Total Distance Inversed> 2295.32

Area: 224815 Sq. Feet, 5.161 Acres



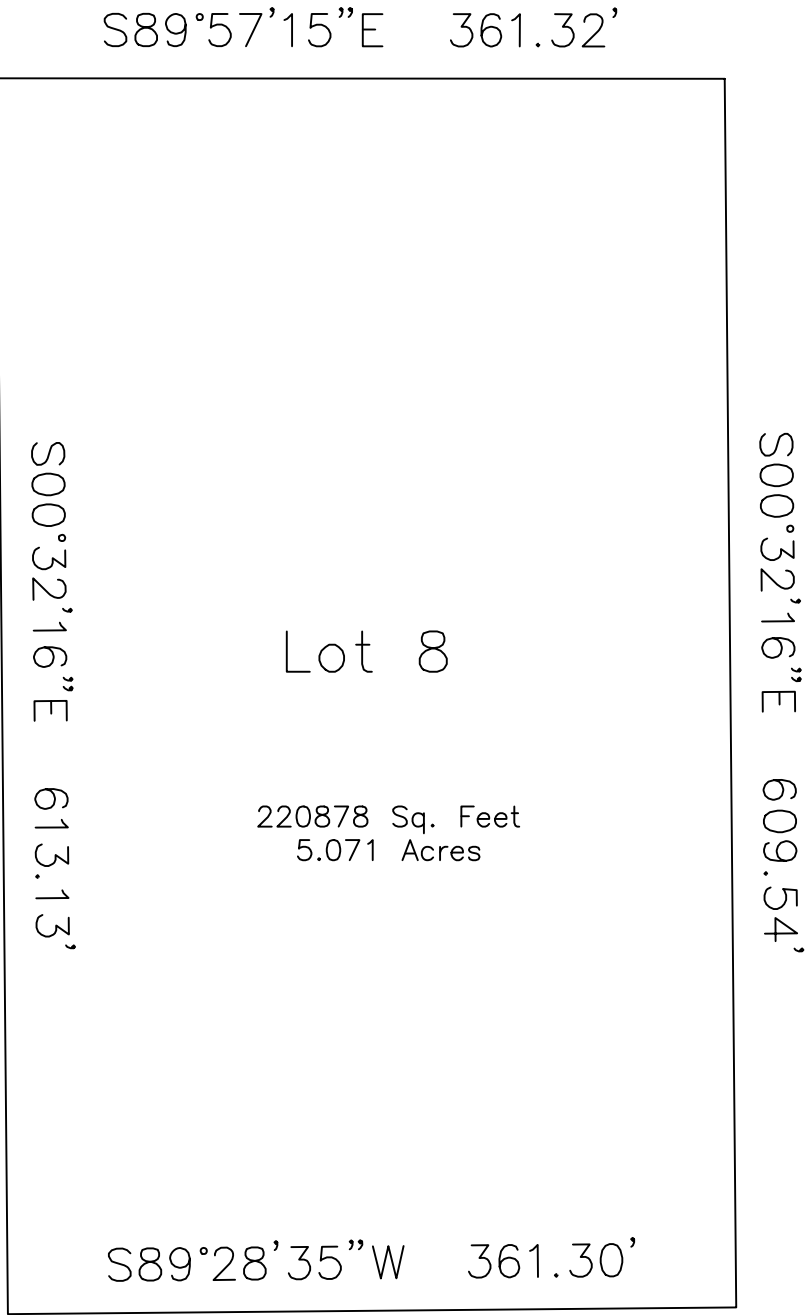
Inverse With Area

Tue, Jun 10 2025 2:33:37 PM

PntNo	Bearing	Distance	Northing	Easting	Description
			18537.47	33887.84	
	S00°32'16"E	613.13			
			17924.37	33893.59	
	S89°28'35"W	230.28			
			17922.26	33663.33	
	Radius: 100.00	Chord: 39.02	Degree: 57°17'45"	Dir: Right	
	Length: 39.27	Delta: 22°30'01"	Tangent: 19.89		
	Chord BRG: N79°16'25"W	Rad-In: N00°31'25"W	Rad-Out: N21°58'36"E		
	Radius PntNo: N: 18022.26	E: 33662.41			
			17929.53	33624.99	
	N68°01'24"W	46.57			
			17946.95	33581.81	
	Radius: 60.00	Chord: 51.45	Degree: 95°29'35"	Dir: Left	
	Length: 53.17	Delta: 50°46'40"	Tangent: 28.48		
	Chord BRG: S86°35'16"W	Rad-In: S21°58'36"W	Rad-Out: S28°48'04"E		
	Radius PntNo: N: 17891.31	E: 33559.35			
			17943.89	33530.45	
	N01°01'29"W	593.97			
			18537.77	33519.83	
	S89°57'15"E	368.01			
			18537.47	33887.84	

Closure Error Distance> 0.0000
Total Distance Inversed> 1944.40

Area: 222440 Sq. Feet, 5.107 Acres



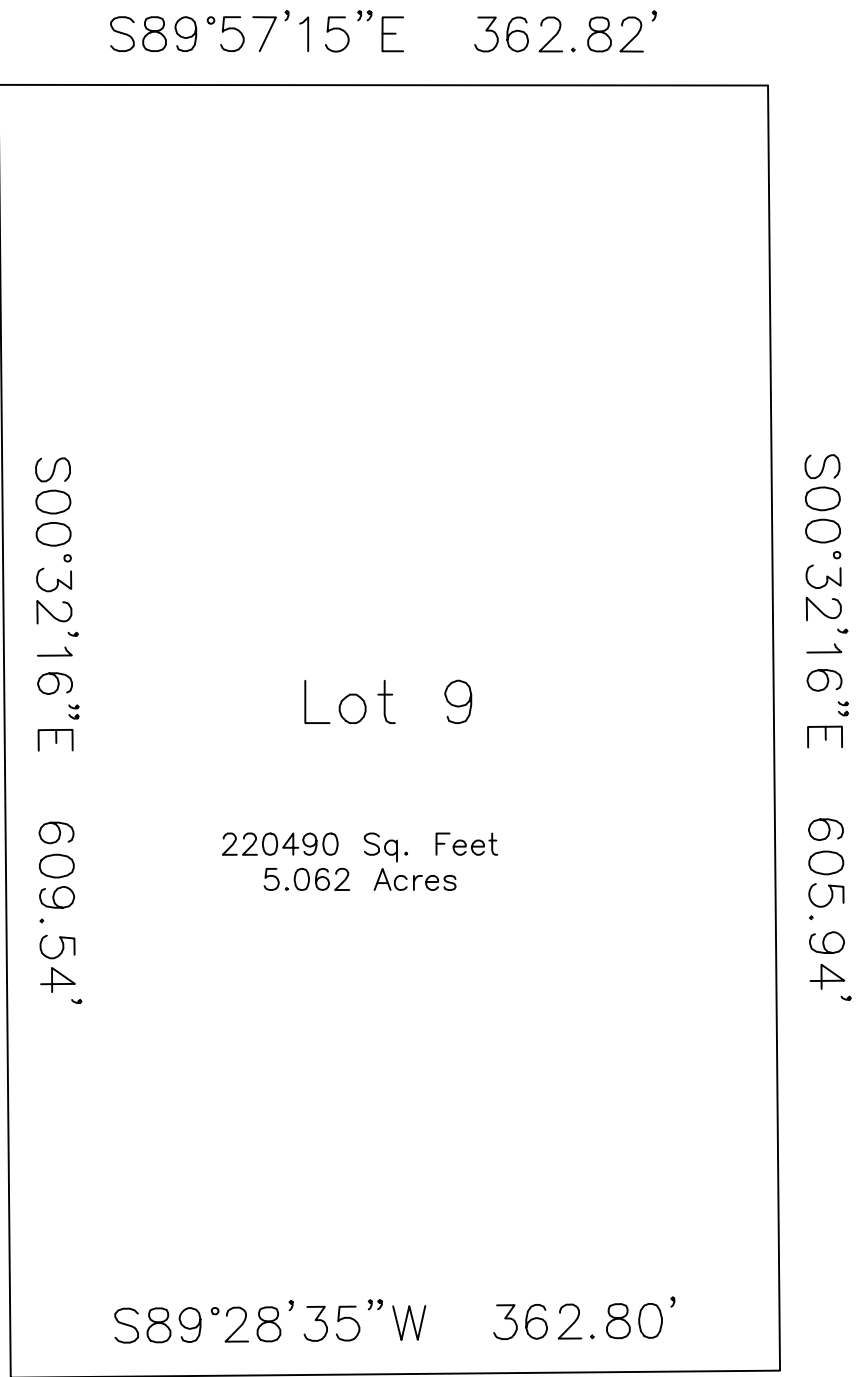
Inverse With Area

Tue, Jun 10 2025 2:34:24 PM

PntNo	Bearing	Distance	Northing	Easting	Description
			18550.77	35759.30	
	S00°32'16"E	609.54	17941.26	35765.02	
	S89°28'35"W	361.30	17937.95	35403.73	
	N00°32'16"W	613.13	18551.06	35397.97	
	S89°57'15"E	361.32	18550.77	35759.30	

Closure Error Distance> 0.0000
Total Distance Inversed> 1945.30

Area: 220878 Sq. Feet, 5.071 Acres



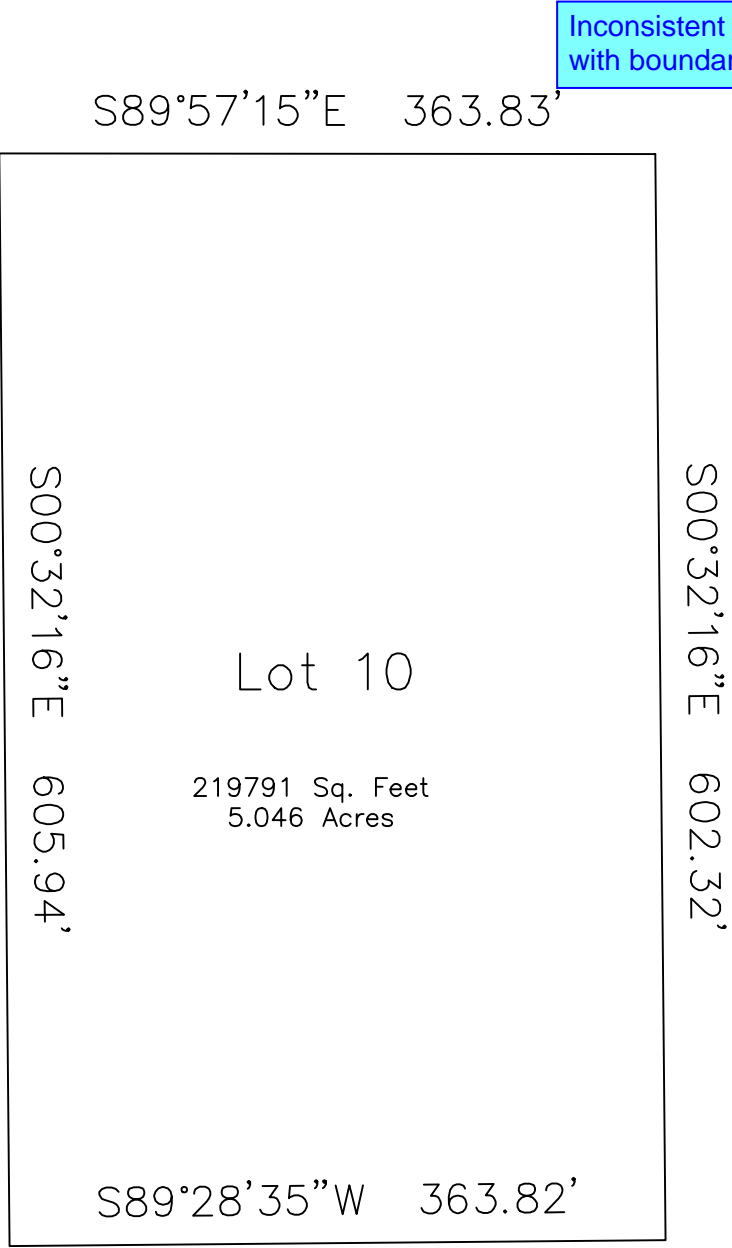
Inverse With Area

Tue, Jun 10 2025 2:50:40 PM

PntNo	Bearing	Distance	Northing	Easting	Description
			18556.28	37589.20	
	S00°32'16"E	605.94	17950.37	37594.88	
	S89°28'35"W	362.80	17947.05	37232.09	
	N00°32'16"W	609.54	18556.57	37226.37	
	S89°57'15"E	362.82	18556.28	37589.20	

Closure Error Distance> 0.0000
Total Distance Inversed> 1941.10

Area: 220490 Sq. Feet, 5.062 Acres



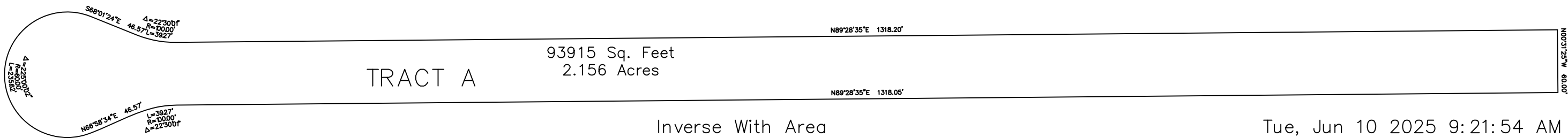
Inconsistent bearing
with boundary closure.

Inverse With Area

Tue, Jun 10 2025 2:35:02 PM

PntNo	Bearing	Distance	Northing	Easting	Description
	S00°32'16"E	602.32	18540.75	37624.54	
	S89°28'35"W	363.82	17938.46	37630.19	
	N00°32'16"W	605.94	17935.14	37266.39	
	S89°57'15"E	363.83	18541.04	37260.71	
			18540.75	37624.54	

Closure Error Distance> 0.0000
Total Distance Inversed> 1935.90
Area: 219791 Sq. Feet, 5.046 Acres



Inverse With Area Tue, Jun 10 2025 9:21:54 AM

PntNo	Bearing	Distance	Northing	Easting	Description
			19856.44	32708.99	
	S00°31'25"E	60.00	19796.44	32709.53	
	S89°28'35"W	1318.05	19784.40	31391.54	
Radius: 100.00 Chord: 39.02 Degree: 57°17'45" Dir: Left					
Length: 39.27 Delta: 22°30'01" Tangent: 19.89					
Chord BRG: S78°13'35"W Rad-In: S00°31'25"E Rad-Out: S23°01'26"E					
Radius PntNo: N: 19684.40 E: 31392.45					
			19776.43	31353.34	
	S66°58'34"W	46.57	19758.22	31310.48	
Radius: 60.00 Chord: 110.87 Degree: 95°29'35" Dir: Right					
Length: 235.62 Delta: 225°00'02 Tangent: 144.85					
Chord BRG: N00°31'25"W Rad-In: N23°01'26"W Rad-Out: S21°58'36"W					
Radius PntNo: N: 19813.44 E: 31287.02					
			19869.08	31309.47	
	S68°01'24"E	46.57	19851.66	31352.65	
Radius: 100.00 Chord: 39.02 Degree: 57°17'45" Dir: Left					
Length: 39.27 Delta: 22°30'01" Tangent: 19.89					
Chord BRG: S79°16'25"E Rad-In: N21°58'36"E Rad-Out: N00°31'25"W					
Radius PntNo: N: 19944.39 E: 31390.08					
			19844.39	31390.99	
	N89°28'35"E	1318.20	19856.44	32709.13	

Closure Error Distance> 0.1492 Error Bearing> N89°28'35"E
Closure Precision> 1 in 20802.0 Total Distance Inversed> 3103.54

Area: 93915 Sq. Feet, 2.156 Acres

11 (2)

Space:

Space:

Inconsistent bearing with boundary closure.