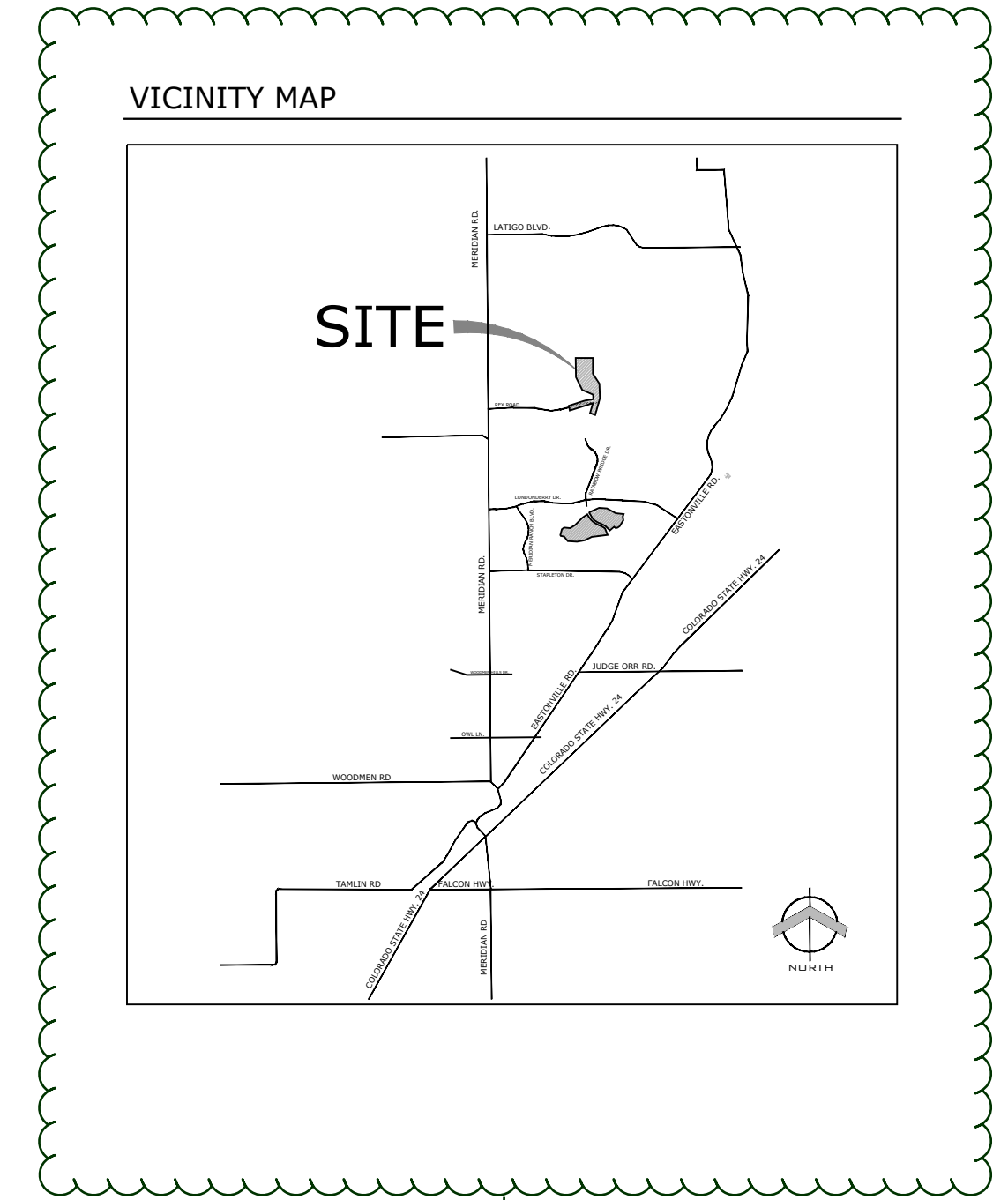


THE ESTATES AT ROLLING HILLS RANCH FILING 1 PUD DEVELOPMENT PLAN / PRELIMINARY PLAN

SECTION 19 AND 20, IN TOWNSHIP 12 SOUTH, RANGE 64 WEST OF THE 6TH PRINCIPAL MERIDIAN, EL PASO COUNTY, COLORADO.



Land Planning
Landscape Architecture
Urban Design

N.E.S. Inc.
619 N. Cascade Ave., Ste. 200
Colorado Springs, CO 80903

Tel. 719.471.0073
Fax 719.471.0267

www.nescolorado.com

© 2012. All Rights Reserved.

PUD BOUNDARY DESCRIPTION

KNOW ALL MEN BY THESE PRESENTS: THAT G.T.L. INC. DBA G.T.L. DEVELOPMENT, INC., THEODORE TCHANG, PRESIDENT AND MERIDIAN SERVICE METROPOLITAN DISTRICT BEING THE OWNERS OF THE FOLLOWING DESCRIBED TRACTS OF LAND:

A PARCEL OF LAND LOCATED IN A PORTIONS OF SECTION 20 AND 29, IN TOWNSHIP 12 SOUTH, RANGE 64 WEST OF THE 6TH PRINCIPAL MERIDIAN, MORE PARTICULARLY DESCRIBED AS FOLLOWS:

BEGINNING AT THE NORTHEASTERN MOST CORNER OF TRACT C OF MERIDIAN RANCH FILING NO. 9, RECORDED WITH RECEPTION NO. 216713763 IN THE RECORDS OF EL PASO COUNTY;

1. THENCE N51°53'30"W ON SAID TRACT LINE A DISTANCE OF 26.13 FEET TO A CURVE TO THE RIGHT;
2. THENCE ON THE ARC OF SAID CURVE, HAVING A RADIUS OF 330.00 FEET, A DELTA ANGLE OF 04°41'46", AN ARC LENGTH OF 27.05 FEET, WHOSE LONG CHORD BEARS N35°45'37"E A DISTANCE OF 27.04 FEET;
3. THENCE N72°56'20"E A DISTANCE OF 32.99 FEET;
4. THENCE N24°30'35"E A DISTANCE OF 60.00 FEET;
5. THENCE N22°23'52"W A DISTANCE OF 31.06 FEET;
6. THENCE N20°49'43"E A DISTANCE OF 52.81 FEET TO A CURVE TO THE LEFT;
7. THENCE ON THE ARC OF SAID CURVE, HAVING A RADIUS OF 630.00 FEET, A DELTA ANGLE OF 22°38'05", AN ARC LENGTH OF 348.88 FEET, WHOSE LONG CHORD BEARS N09°30'41"E A DISTANCE OF 247.27 FEET;
8. THENCE N42°56'08"E A DISTANCE OF 31.12 FEET;
9. THENCE N02°04'24"W A DISTANCE OF 100.00 FEET;
10. THENCE N07°55'36"E A DISTANCE OF 348.00 FEET TO A CURVE TO THE RIGHT;
11. THENCE ON THE ARC OF SAID CURVE, HAVING A RADIUS OF 1000.00 FEET, A DELTA ANGLE OF 06°09'39", AN ARC LENGTH OF 107.53 FEET, WHOSE LONG CHORD BEARS S88°59'34"E A DISTANCE OF 107.48 FEET;
12. THENCE S85°54'45"E A DISTANCE OF 400.64 FEET TO A CURVE TO THE RIGHT;
13. THENCE ON THE ARC OF SAID CURVE, HAVING A RADIUS OF 7540.00 FEET, A DELTA ANGLE OF 03°02'05", AN ARC LENGTH OF 399.38 FEET, WHOSE LONG CHORD BEARS S84°23'42"E A DISTANCE OF 399.33 FEET;
14. THENCE S07°07'21"W A DISTANCE OF 100.00 FEET TO A NON-TANGENT CURVE TO THE RIGHT;
15. THENCE ON THE ARC OF SAID CURVE, HAVING A RADIUS OF 7440.00 FEET, A DELTA ANGLE OF 00°18'41", AN ARC LENGTH OF 40.44 FEET, WHOSE LONG CHORD BEARS S82°43'19"E A DISTANCE OF 40.44 FEET;
16. THENCE S82°33'58"E A DISTANCE OF 1906.13 FEET;
17. THENCE S28°18'46"E A DISTANCE OF 1200.00 FEET;
18. THENCE N06°45'47"E A DISTANCE OF 400.00 FEET;
19. THENCE S44°45'04"E A DISTANCE OF 478.58 FEET TO A POINT ON THE WESTERLY BOUNDARY OF FALCON REGIONAL PARK, RECORDED WITH RECEPTION NO. 214096227 IN THE RECORDS OF EL PASO COUNTY;

THE FOLLOWING TWO (2) COURSES ARE ON SAID BOUNDARY LINE:

20. THENCE S45°14'56"W A DISTANCE OF 1150.00 FEET;
21. THENCE S00°11'44"E A DISTANCE OF 550.00 FEET;
22. THENCE S00°34'48"W A DISTANCE OF 80.00 FEET;
23. THENCE N89°25'12"W A DISTANCE OF 715.30 FEET;
24. THENCE S45°34'48"W A DISTANCE OF 14.54 FEET;
25. THENCE S00°34'48"W A DISTANCE OF 236.58 FEET;
26. THENCE S05°23'19"E A DISTANCE OF 103.70 FEET;
27. THENCE S17°01'39"E A DISTANCE OF 103.70 FEET;
28. THENCE S22°59'54"E A DISTANCE OF 174.64 FEET TO A POINT ON THE NORTHERLY BOUNDARY OF FALCON HIGH SCHOOL, RECORDED WITH RECEPTION NO. 206058517 IN THE RECORDS OF EL PASO COUNTY;
29. THENCE S89°19'41"W A DISTANCE OF 21.70 FEET ALONG SAID BOUNDARY;
30. THENCE S07°31'44"W A DISTANCE OF 80.00 FEET TO A POINT ON THE EASTERLY BOUNDARY OF MERIDIAN RANCH FILING NO. 11A, RECORDED WITH RECEPTION NO. 214713513 IN THE RECORDS OF EL PASO COUNTY AND A NON-TANGENT CURVE TO THE LEFT;

THE FOLLOWING NINE (9) COURSES ARE ON SAID BOUNDARY LINE:

31. THENCE ON THE ARC OF SAID CURVE, HAVING A RADIUS OF 1710.00 FEET, A DELTA ANGLE OF 00°31'29", AN ARC LENGTH OF 15.66 FEET, WHOSE LONG CHORD BEARS N22°44'00"W A DISTANCE OF 15.66 FEET;
32. THENCE N22°59'45"W A DISTANCE OF 63.09 FEET;
33. THENCE S86°16'43"W A DISTANCE OF 450.00 FEET;
34. THENCE N63°51'45"W A DISTANCE OF 640.00 FEET;
35. THENCE N30°07'09"W A DISTANCE OF 150.37 FEET;
36. THENCE N81°02'28"W A DISTANCE OF 138.95 FEET;
37. THENCE N05°41'51"W A DISTANCE OF 647.93 FEET;
38. THENCE N80°23'28"W A DISTANCE OF 503.71 FEET;
39. THENCE S72°14'49"W A DISTANCE OF 634.00 FEET TO A POINT ON THE EASTERLY BOUNDARY OF MERIDIAN RANCH FILING NO. 8, RECORDED WITH RECEPTION NO. 215713635 IN THE RECORDS OF EL PASO COUNTY;

THE FOLLOWING ELEVEN (11) COURSES ARE ON SAID BOUNDARY LINE:

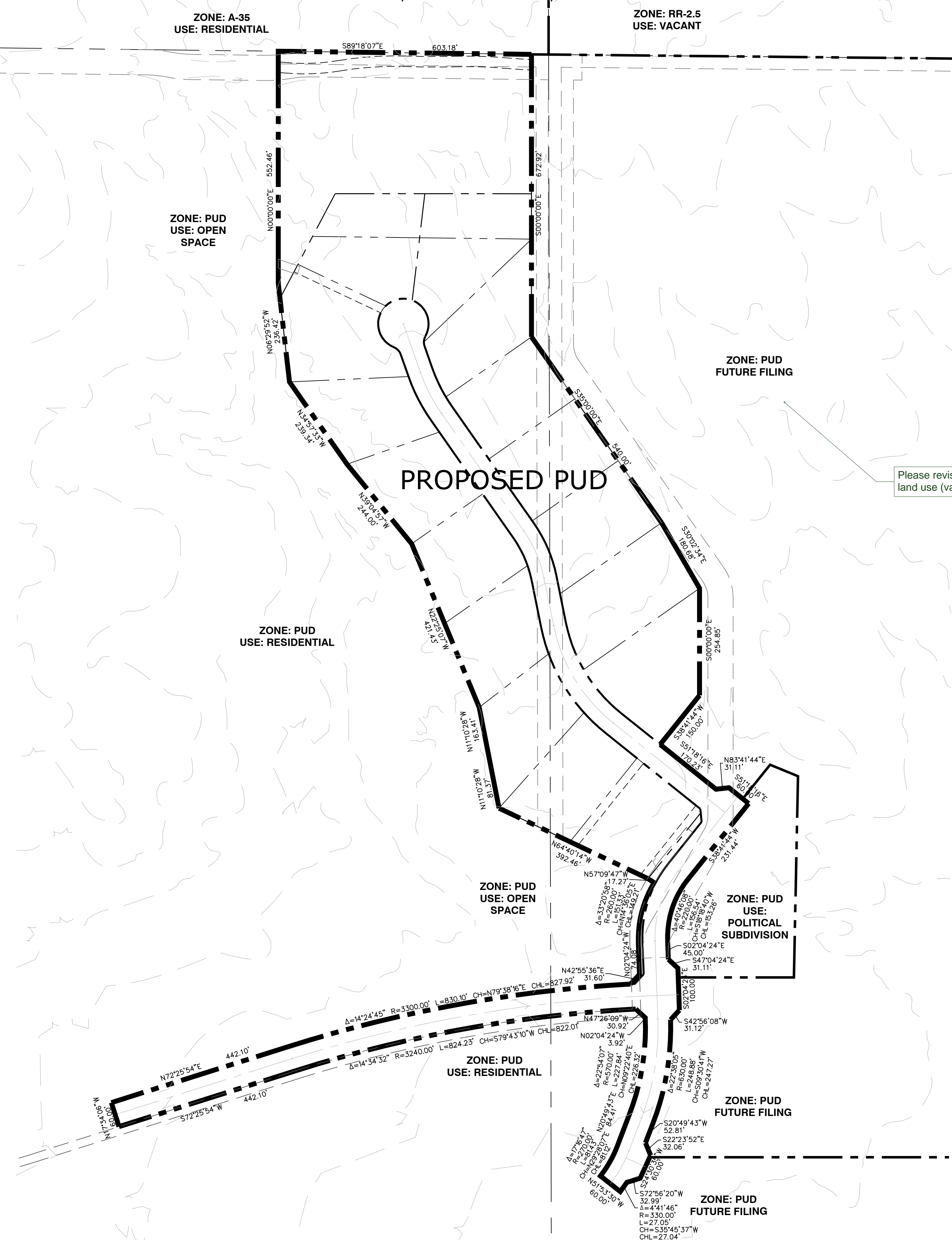
40. THENCE N05°03'36"W A DISTANCE OF 165.00 FEET;
41. THENCE N20°15'12"W A DISTANCE OF 165.00 FEET;
42. THENCE N31°56'25"W A DISTANCE OF 165.00 FEET;
43. THENCE N42°44'55"W A DISTANCE OF 102.00 FEET;
44. THENCE N55°18'55"W A DISTANCE OF 75.00 FEET;
45. THENCE N36°06'38"E A DISTANCE OF 108.00 FEET;
46. THENCE N49°18'35"W A DISTANCE OF 134.00 FEET;
47. THENCE N33°45'49"W A DISTANCE OF 132.00 FEET;
48. THENCE N17°12'24"W A DISTANCE OF 137.00 FEET;
49. THENCE N09°08'23"W A DISTANCE OF 85.86 FEET;
50. THENCE N03°22'02"E A DISTANCE OF 74.77 FEET TO A POINT ON THE EASTERLY BOUNDARY OF SAID MERIDIAN RANCH FILING NO. 9;

THE FOLLOWING SEVEN (7) COURSES ARE ON SAID BOUNDARY LINE:

51. THENCE N10°04'06"W A DISTANCE OF 162.63 FEET;
52. THENCE N26°31'01"W A DISTANCE OF 218.96 FEET;
53. THENCE N06°43'25"W A DISTANCE OF 140.00 FEET;
54. THENCE N01°13'59"W A DISTANCE OF 97.14 FEET;
55. THENCE N04°28'51"E A DISTANCE OF 360.75 FEET;
56. THENCE N12°48'36"W A DISTANCE OF 91.63 FEET;
57. THENCE N22°11'16"W A DISTANCE OF 110.06 FEET TO THE POINT OF BEGINNING.

THE ABOVE PARCEL OF LAND CONTAINS 251.094 ACRES, MORE OR LESS.

BEARINGS ARE BASED ON THE SOUTH LINE OF THE SW ¼ OF SECTION 29, TOWNSHIP 12 SOUTH, RANGE 64 WEST OF THE 6TH P.M., ASSUMED TO BEAR S89°25'42"E FROM THE SOUTHWEST CORNER OF SAID SECTION 29 (A STONE W/SCRIBED "X") TO THE SOUTH QUARTER CORNER OF SAID SECTION 29 (3.25" ALUM. CAP LS #30087).



please increase the text size of the streets
NES RESPONSE:
Revised as noted.

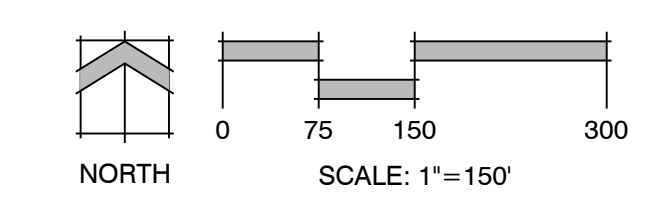
Please revise to add land use (vacant)

NES RESPONSE:
Revised as noted.

Please add adjacent property ownership.

NES RESPONSE:
Adjacent Ownership provided as noted.
Petitioner Name and Address provided on Adjacent Owner Sheet 14 of 14.

Please add the name and addresses of the petitioner, owner



PLANNING / LANDSCAPE ARCHITECT

IN ASSOCIATION WITH:

SHEET

SHEET INFO

SHEET PROVISION

SHEET TITLE

SHEET NUMBER

PLANNING #

The Estates at Rolling Hills Ranch Filing 1

PUD Development Plan / Preliminary Plan

DATE: September 25, 2019
PROJECT MGR: J. Romero
PREPARED BY: K. Marshall

ENTITLEMENT

DATE	BY	DESCRIPTION

ZONING MAP

1
OF 1

PUDSP-19-007

PCD#

P:\GTL\Meridian Ranch\Drawings\Planning\Rolling Hills Estates\Drawings\Planning\Development\Estates_PUD_SitePlan.dwg [Zone_Map] 9/20/2019 2:51:41 PM kmarshall