

EL PASO COUNTY STANDARD NOTES:

1. STORMWATER DISCHARGES FROM CONSTRUCTION SITES SHALL NOT CAUSE OR THREATEN TO CAUSE POLLUTION, CONTAMINATION, OR DEGRADATION OF STATE WATERS. ALL WORK AND EARTH DISTURBANCE SHALL BE DONE IN A MANNER THAT MINIMIZES POLLUTION OF ANY ON-SITE OR OFF SITE WATERS, INCLUDING WETLANDS.
2. NOTWITHSTANDING ANYTHING DEPICTED IN THESE PLANS IN WORDS OR GRAPHIC REPRESENTATION, ALL DESIGN AND CONSTRUCTION RELATED TO ROADS, STORM DRAINAGE AND EROSION CONTROL SHALL CONFORM TO THE STANDARDS AND REQUIREMENTS OF THE MOST RECENT VERSION OF THE RELEVANT ADOPTED EL PASO COUNTY STANDARDS, INCLUDING THE LAND DEVELOPMENT CODE, THE ENGINEERING CRITERIA MANUAL, THE DRAINAGE CRITERIA MANUAL, AND THE DRAINAGE CRITERIA MANUAL VOLUME 2. ANY DEVIATIONS TO REGULATIONS AND STANDARDS MUST BE REQUESTED, AND APPROVED, IN WRITING.
3. A SEPARATE STORMWATER MANAGEMENT PLAN (SWMP) FOR THIS PROJECT SHALL BE COMPLETED AND AN EROSION AND STORMWATER QUALITY CONTROL PERMIT (ESQCP) ISSUED PRIOR TO COMMENCING CONSTRUCTION. MANAGEMENT OF THE SWMP DURING CONSTRUCTION IS THE RESPONSIBILITY OF THE DESIGNATED QUALIFIED STORMWATER MANAGER OR CERTIFIED EROSION CONTROL INSPECTOR. THE SWMP SHALL BE LOCATED ON SITE AT ALL TIMES AND SHALL BE KEPT UP TO DATE WITH WORK PROGRESS AND CHANGES IN THE FIELD.
4. ONCE THE ESQCP IS APPROVED AND A "NOTICE TO PROCEED" HAS BEEN ISSUED, THE CONTRACTOR MAY INSTALL THE INITIAL STAGE EROSION AND SEDIMENT CONTROL MEASURES AS INDICATED ON THE APPROVED GEC. A PRECONSTRUCTION MEETING BETWEEN THE CONTRACTOR, ENGINEER, AND EL PASO COUNTY WILL BE HELD PRIOR TO ANY CONSTRUCTION. IT IS THE RESPONSIBILITY OF THE APPLICANT TO COORDINATE THE MEETING TIME AND PLACE WITH COUNTY STAFF.
5. CONTROL MEASURES MUST BE INSTALLED PRIOR COMMENCEMENT OF ACTIVITIES THAT COULD CONTRIBUTE POLLUTANTS TO STORMWATER. CONTROL MEASURES FOR ALL SLOPES, CHANNELS, DITCHES, AND DISTURBED LAND AREAS SHALL BE INSTALLED IMMEDIATELY UPON COMPLETION OF THE DISTURBANCE.
6. ALL TEMPORARY SEDIMENT AND EROSION CONTROL MEASURES SHALL BE MAINTAINED AND REMAIN IN EFFECTIVE OPERATING CONDITION UNTIL PERMANENT SOIL EROSION CONTROL MEASURES ARE IMPLEMENTED AND FINAL STABILIZATION IS ESTABLISHED. ALL PERSONS ENGAGED IN LAND DISTURBANCE ACTIVITIES SHALL ASSESS THE ADEQUACY OF CONTROL MEASURES AT THE SITE AND IDENTIFY IF CHANGES TO THOSE CONTROL MEASURES ARE NEEDED TO ENSURE THE CONTINUED EFFECTIVE PERFORMANCE OF THE CONTROL MEASURES. ALL CHANGES TO TEMPORARY SEDIMENT AND EROSION CONTROL MEASURES MUST BE INCORPORATED INTO THE STORMWATER MANAGEMENT PLAN.
7. TEMPORARY STABILIZATION SHALL BE IMPLEMENTED ON DISTURBED AREAS AND STOCKPILES WHERE GROUND DISTURBING CONSTRUCTION ACTIVITY HAS PERMANENTLY CEASED OR TEMPORARILY CEASED FOR LONGER THAN 14 DAYS.
8. FINAL STABILIZATION MUST BE IMPLEMENTED AT ALL APPLICABLE CONSTRUCTION SITES. FINAL STABILIZATION IS ACHIEVED WHEN ALL GROUND DISTURBING ACTIVITIES ARE COMPLETE AND ALL DISTURBED AREAS EITHER HAVE A UNIFORM VEGETATIVE COVER WITH INDIVIDUAL PLANT DENSITY OF 70 PERCENT OF PRE-DISTURBANCE LEVELS, ESTABLISHED OR EQUIVALENT PERMANENT STABILIZATION METHOD IS IMPLEMENTED. ALL TEMPORARY SEDIMENT AND EROSION CONTROL MEASURES SHALL BE REMOVED UPON FINAL STABILIZATION AND BEFORE PERMIT CLOSURE.
9. ALL PERMANENT STORMWATER MANAGEMENT FACILITIES SHALL BE INSTALLED AS DESIGNED IN THE APPROVED PLANS. ANY PROPOSED CHANGES THAT EFFECT THE DESIGN OR FUNCTION OF PERMANENT STORMWATER MANAGEMENT STRUCTURES MUST BE APPROVED BY THE ECM ADMINISTRATOR PRIOR TO IMPLEMENTATION.
10. EARTH DISTURBANCES SHALL BE CONDUCTED IN SUCH A MANNER SO AS TO EFFECTIVELY MINIMIZE ACCELERATED SOIL EROSION AND RESULTING SEDIMENTATION. ALL DISTURBANCES SHALL BE DESIGNED, CONSTRUCTED, AND COMPLETED SO THAT THE EXPOSED AREA OF ANY DISTURBED LAND SHALL BE LIMITED TO THE SHORTEST PRACTICAL PERIOD OF TIME. PRE-EXISTING VEGETATION SHALL BE PROTECTED AND MAINTAINED WITHIN 50 HORIZONTAL FEET OF A WATERS OF THE STATE UNLESS SHOWN TO BE INFEASIBLE AND SPECIFICALLY REQUESTED AND APPROVED.
11. COMPACTION OF SOIL MUST BE PREVENTED IN AREAS DESIGNATED FOR INFILTRATION CONTROL MEASURES OR WHERE FINAL STABILIZATION WILL BE ACHIEVED BY VEGETATIVE COVER. AREAS DESIGNATED FOR INFILTRATION CONTROL MEASURES SHALL ALSO BE PROTECTED FROM SEDIMENTATION DURING CONSTRUCTION UNTIL FINAL STABILIZATION IS ACHIEVED. IF COMPACTION PREVENTION IS NOT FEASIBLE DUE TO SITE CONSTRAINTS, ALL AREAS DESIGNATED FOR INFILTRATION AND VEGETATION CONTROL MEASURES MUST BE LOOSENEED PRIOR TO INSTALLATION OF THE CONTROL MEASURE(S).
12. ANY TEMPORARY OR PERMANENT FACILITY DESIGNED AND CONSTRUCTED FOR THE CONVEYANCE OF STORMWATER AROUND, THROUGH, OR FROM THE EARTH DISTURBANCE AREA SHALL BE A STABILIZED CONVEYANCE DESIGNED TO MINIMIZE EROSION AND THE DISCHARGE OF SEDIMENT OFF SITE.
13. CONCRETE WASH WATER SHALL BE CONTAINED AND DISPOSED OF IN ACCORDANCE WITH THE SWMP. NO WASH WATER SHALL BE DISCHARGED TO OR ALLOWED TO ENTER STATE WATERS, INCLUDING ANY SURFACE OR SUBSURFACE STORM DRAINAGE SYSTEM OR FACILITIES. CONCRETE WASHOUTS SHALL NOT BE LOCATED IN AN AREA WHERE SHALLOW GROUNDWATER MAY BE PRESENT, OR WITHIN 50 FEET OF A SURFACE WATER BODY, CREEK OR STREAM.
14. DURING DEWATERING OPERATIONS OF UNCONTAMINATED GROUND WATER MAY BE DISCHARGED ON SITE, BUT SHALL NOT LEAVE THE SITE IN THE FORM OF SURFACE RUNOFF UNLESS AN APPROVED STATE DEWATERING PERMIT IS IN PLACE.
15. EROSION CONTROL BLANKETING OR OTHER PROTECTIVE COVERING SHALL BE USED ON SLOPES STEEPER THAN 3:1.
16. CONTRACTOR SHALL BE RESPONSIBLE FOR THE REMOVAL OF ALL WASTES FROM THE CONSTRUCTION SITE FOR DISPOSAL IN ACCORDANCE WITH LOCAL AND STATE REGULATORY REQUIREMENTS. NO CONSTRUCTION DEBRIS, TREE SLASH, BUILDING MATERIAL WASTES OR UNUSED BUILDING MATERIALS SHALL BE BURIED, DUMPED, OR DISCHARGED AT THE SITE.
17. WASTE MATERIALS SHALL NOT BE TEMPORARILY PLACED OR STORED IN THE STREET, ALLEY, OR OTHER PUBLIC WAY, UNLESS IN ACCORDANCE WITH AN APPROVED TRAFFIC CONTROL PLAN. CONTROL MEASURES MAY BE REQUIRED BY EL PASO COUNTY ENGINEERING IF DEEMED NECESSARY, BASED ON SPECIFIC CONDITIONS AND CIRCUMSTANCES.
18. TRACKING OF SOILS AND CONSTRUCTION DEBRIS OFF-SITE SHALL BE MINIMIZED. MATERIALS TRACKED OFF-SITE SHALL BE CLEANED UP AND PROPERLY DISPOSED OF IMMEDIATELY.
19. THE OWNER/DEVELOPER SHALL BE RESPONSIBLE FOR THE REMOVAL OF ALL CONSTRUCTION DEBRIS, DIRT, TRASH, ROCK, SEDIMENT, SOIL, AND SAND THAT MAY ACCUMULATE IN ROADS, STORM DRAINS AND OTHER DRAINAGE CONVEYANCE SYSTEMS AND STORMWATER APPURTENANCES AS A RESULT OF SITE DEVELOPMENT.
20. THE QUANTITY OF MATERIALS STORED ON THE PROJECT SITE SHALL BE LIMITED, AS MUCH AS PRACTICAL, TO THAT QUANTITY REQUIRED TO PERFORM THE WORK IN AN ORDERLY SEQUENCE. ALL MATERIALS STORED ON-SITE SHALL BE STORED IN A NEAT, ORDERLY MANNER, IN THEIR ORIGINAL CONTAINERS, WITH ORIGINAL MANUFACTURER'S LABELS.
21. NO CHEMICAL(S) HAVING THE POTENTIAL TO BE RELEASED IN STORMWATER ARE TO BE STORED OR USED ONSITE UNLESS PERMISSION FOR THE USE OF SUCH CHEMICAL(S) IS GRANTED IN WRITING BY THE ECM ADMINISTRATOR. IN GRANTING APPROVAL FOR THE USE OF SUCH CHEMICAL(S), SPECIAL CONDITIONS AND MONITORING MAY BE REQUIRED.
22. BULK STORAGE OF ALLOWED PETROLEUM PRODUCTS OR OTHER ALLOWED LIQUID CHEMICALS IN EXCESS OF 55 GALLONS SHALL REQUIRE ADEQUATE SECONDARY CONTAINMENT PROTECTION TO CONTAIN ALL SPILLS ONSITE AND TO PREVENT ANY SPILLED MATERIALS FROM ENTERING STATE WATERS, ANY SURFACE OR SUBSURFACE STORM DRAINAGE SYSTEM OR OTHER FACILITIES.
23. NO PERSON SHALL CAUSE THE IMPEDIMENT OF STORMWATER FLOW IN THE CURB AND GUTTER OR DITCH EXCEPT WITH APPROVED SEDIMENT CONTROL MEASURES.
24. OWNER/DEVELOPER AND THEIR AGENTS SHALL COMPLY WITH THE "COLORADO WATER QUALITY CONTROL ACT" (TITLE 25, ARTICLE 8, C.R.S.) AND THE "CLEAN WATER ACT" (33 USC 1344), IN ADDITION TO THE REQUIREMENTS OF THE LAND DEVELOPMENT CODE, DCM VOLUME II AND THE ECM APPENDIX I. ALL APPROPRIATE PERMITS MUST BE OBTAINED BY THE CONTRACTOR PRIOR TO CONSTRUCTION (1041, NPDES, FLOODPLAIN, 404, FUGITIVE DUST, ETC.). IN THE EVENT OF CONFLICTS BETWEEN THESE REQUIREMENTS AND OTHER LAWS, RULES, OR REGULATIONS OF OTHER FEDERAL, STATE, LOCAL, OR COUNTY AGENCIES, THE MOST RESTRICTIVE LAWS, RULES, OR REGULATIONS SHALL APPLY.
25. ALL CONSTRUCTION TRAFFIC MUST ENTER/EXIT THE SITE ONLY AT APPROVED CONSTRUCTION ACCESS POINTS.
26. PRIOR TO CONSTRUCTION THE PERMITTEE SHALL VERIFY THE LOCATION OF EXISTING UTILITIES.
27. A WATER SOURCE SHALL BE AVAILABLE ON SITE DURING EARTHWORK OPERATIONS AND SHALL BE UTILIZED AS REQUIRED TO MINIMIZE DUST FROM EARTHWORK EQUIPMENT AND WIND.
28. THE SOILS REPORT FOR THIS SITE HAS BEEN PREPARED BY ENTECH ENGINEERING, INC. AND SHALL BE CONSIDERED A PART OF THESE PLANS.
29. AT LEAST TEN DAYS PRIOR TO THE ANTICIPATED START OF CONSTRUCTION, FOR PROJECTS THAT WILL DISTURB ONE (1) ACRE OR MORE, THE OWNER OR OPERATOR OF CONSTRUCTION ACTIVITY SHALL SUBMIT A PERMIT APPLICATION FOR STORMWATER DISCHARGE TO THE COLORADO DEPARTMENT OF PUBLIC HEALTH AND ENVIRONMENT, WATER QUALITY DIVISION. THE APPLICATION CONTAINS CERTIFICATION OF COMPLETION OF A STORMWATER MANAGEMENT PLAN (SWMP), OF WHICH THIS GRADING AND EROSION CONTROL PLAN MAY BE A PART. FOR INFORMATION OR APPLICATION MATERIALS CONTACT:

COLORADO DEPARTMENT OF PUBLIC HEALTH AND ENVIRONMENT
WATER QUALITY CONTROL DIVISION
WOOD - PERMITS
4300 CHERRY CREEK DRIVE SOUTH
DENVER, CO 80246-1530
ATTN: PERMITS UNIT

STEPS FOR CONSTRUCTION

THE ANTICIPATED START FOR THIS PROJECT IS FEBRUARY 2020 WITH AN ANTICIPATED COMPLETION DATE OF JULY 2020. BELOW IS A BRIEF OUTLINE OF THE CONSTRUCTION SEQUENCE FOR THIS PROJECT.

- * INSTALL INITIAL BMP'S
- * CONSTRUCTION OF DITCHES AND EROSION CONTROL STRUCTURES
- * ROUGH GRADING OF LOTS AND ROADS
- * SANITARY SEWER
- * WATER
- * STORM SEWER AND CULVERTS
- * ELECTRIC
- * GAS
- * PHONE & CABLE TV
- * FINISHED ROAD GRADING AND PAVING

EROSION AND SEDIMENT CONTROLS

SILT FENCES AND STRAW BALE CHECK DAMS (OR APPROVED EQUAL) WILL BE INSTALLED PRIOR TO ANY EXCAVATION FOR THE MAJOR ROADS. STRAW BALE CHECK DAMS, FILTREX OR APPROVED EQUAL WILL BE PLACED AT ALL ENTRANCES AND EXITS OF DRAINAGE WAYS. STRAW BALES, FILTREXX OR APPROVED EQUAL WILL BE INSTALLED AROUND THE OUTLET AND OVERFLOW STRUCTURE. THE OUTLET STRUCTURE WILL ALSO BE PROTECTED WITH RIPRAP ON THE DOWNSTREAM SIDE.

NON-STRUCTURE PRACTICES TO CONTROL EROSION AND SEDIMENTATION WILL INCLUDE RESEEDING OF GROUND COVER IN DISTURBED AREAS ACCORDING TO THE EROSION CONTROL PLAN. TEMPORARY SEEDING OF THE DETENTION POND AND MULCHING ALONG STEEP EMBANKMENTS WILL BE PERFORMED AS REQUIRED.

SILT FENCE IS REQUIRED TO BE IN PLACE PRIOR TO ANY MOVEMENT OF DIRT.

MATERIAL HANDLING AND SPILL PREVENTION

THE MOST PROBABLE SOURCE OF NON-STORMWATER POLLUTION IS REFUELING AND DAILY MAINTENANCE OPERATIONS. IF MOBILE FUEL TRUCKS ARE USED TO SERVICE EQUIPMENT, ABSORBENT MATERIALS AND CONTAINERS FOR THE STORAGE OF USED ABSORBENT MATERIAL WILL BE CLOSE BY. IF A FUEL TANK IS LEFT ON SITE, BERMS WILL BE BUILT AROUND THE TANK TO CAPTURE ANY SPILLED FUEL. AGAIN, ABSORBENT MATERIALS AND THEIR CONTAINERS WILL BE ON HAND.

THERE ARE NO DEDICATED ASPHALT OR CONCRETE BATCH PLANTS PLANNED FOR THIS SITE.

FINAL STABILIZATION AND LONG TERM STORMWATER MANAGEMENT

ONCE THE MAJOR ROADS ARE PAVED AND THE SURROUNDING DISTURBED AREAS ARE 70% ESTABLISHED WITH VEGETATION AND ACCEPTANCE BY THE MERIDIAN RANCH SERVICE DISTRICT, THE CHECK DAMS AND THE SILT FENCES AROUND THE STREETS CAN BE REMOVED. AFTER COMPLETION OF THE STORM SEWER SYSTEM, THE STRAW BALES AND/OR FILTREX CAN BE REMOVED. AFTER ALL GROUND DISTURBING CONSTRUCTION HAS BEEN COMPLETED AND ALL SLOPES ARE 70% ESTABLISHED WITH VEGETATION AND ACCEPTANCE BY THE MERIDIAN RANCH SERVICE DISTRICT, REMAINING CHECK DAMS AND SILT FENCES CAN BE REMOVED. THE RIPRAP ON ANY OF THE OUTLETS WILL REMAIN AFTER CONSTRUCTION TO REDUCE EROSION OF THE CHANNELS. ALL PERMANENT SWALES WILL BE LINED WITH LANDSCAPING TO SLOW RUNOFF AND FILTER SEDIMENTS.

OTHER CONTROLS

THERE ARE SEVERAL BEST MANAGEMENT PRACTICES THAT CAN BE EMPLOYED TO PREVENT OR MITIGATE THE SOURCE OF POLLUTANTS AND CONTAMINATION OF STORMWATER RUNOFF. SOME OF THESE ARE:
* ALL REFUSE DUMPSTERS AND RECEPTACLES SHALL BE EQUIPPED WITH FUNCTIONAL LIDS TO PREVENT RAIN AND SNOW FROM ENTERING.
* STORAGE CONTAINERS, DRUMS AND BAGS SHALL BE STORED AWAY FROM DIRECT TRAFFIC ROUTES TO PREVENT ACCIDENTAL SPILLS.
* EMPTY DRUMS SHALL BE COVERED TO PREVENT COLLECTION OF PRECIPITATION.
* CONTAINERS SHALL BE STORED ON PALLETS OR OTHER DUNNAGE TO PREVENT CORROSION OF CONTAINERS, WHICH CAN RESULT WHEN CONTAINERS COME IN CONTACT WITH MOISTURE ON THE GROUND.
* REGULARLY SCHEDULED REMOVAL OF CONSTRUCTION TRASH AND DEBRIS.
THE CONTRACTOR IS CERTAINLY NOT LIMITED TO THESE GOOD HOUSEKEEPING MEASURES, AND MAY IMPLEMENT FURTHER CONTROLS AS PRUDENCE AND GOOD JUDGEMENT DEEM NECESSARY.

INSPECTION AND MAINTENANCE

A THOROUGH INSPECTION OF THE STORMWATER MANAGEMENT SYSTEM SHALL BE PERFORMED EVERY 14 DAYS AS WELL AS AFTER ANY RAIN OR SNOWMELT EVENT THAT CAUSES SURFACE EROSION:
* EROSION OR V-NOTCH SWALES CHANNELS AND SIDE SLOPES SHALL BE REPAIRED.
* WHEN THE CHECK DAMS HAVE SiltED UP TO HALF THEIR HEIGHT, THE SILT SHALL BE REMOVED, CHANNEL GRADE REESTABLISHED, AND SIDE SLOPES RE-SEEDED IF NECESSARY. ANY CHECK DAMS THAT HAVE SHIFTED OR DECAYED SHALL BE REPAIRED OR REPLACED.
* SILT FENCES SHALL BE CLEANED WHENEVER SEDIMENT HAS REACHED A DEPTH OF 6" AT THE FENCE, AND BROKEN WOODEN PARTS OR TORN FABRIC SHALL BE REPAIRED OR REPLACED.
* ANY ACCUMULATED TRASH OR DEBRIS SHALL BE REMOVED FROM OUTLETS.
* IF THE DEPTH OF THE SILT IN THE TEMPORARY SEDIMENTATION TRAP EXCEEDS 1/2 OF THE ORIGINAL DEPTH, THE TRAP SHALL BE CLEANED OUT AND RESTORED TO ITS ORIGINAL DEPTH. THE OVERFLOW SPILLWAY SHALL BE CLEANED OR REPAIRED AS NECESSARY.
AN INSPECTION AND MAINTENANCE LOG FOLLOWS THIS STORMWATER MANAGEMENT PLAN.

REVEGETATION AND SEEDING

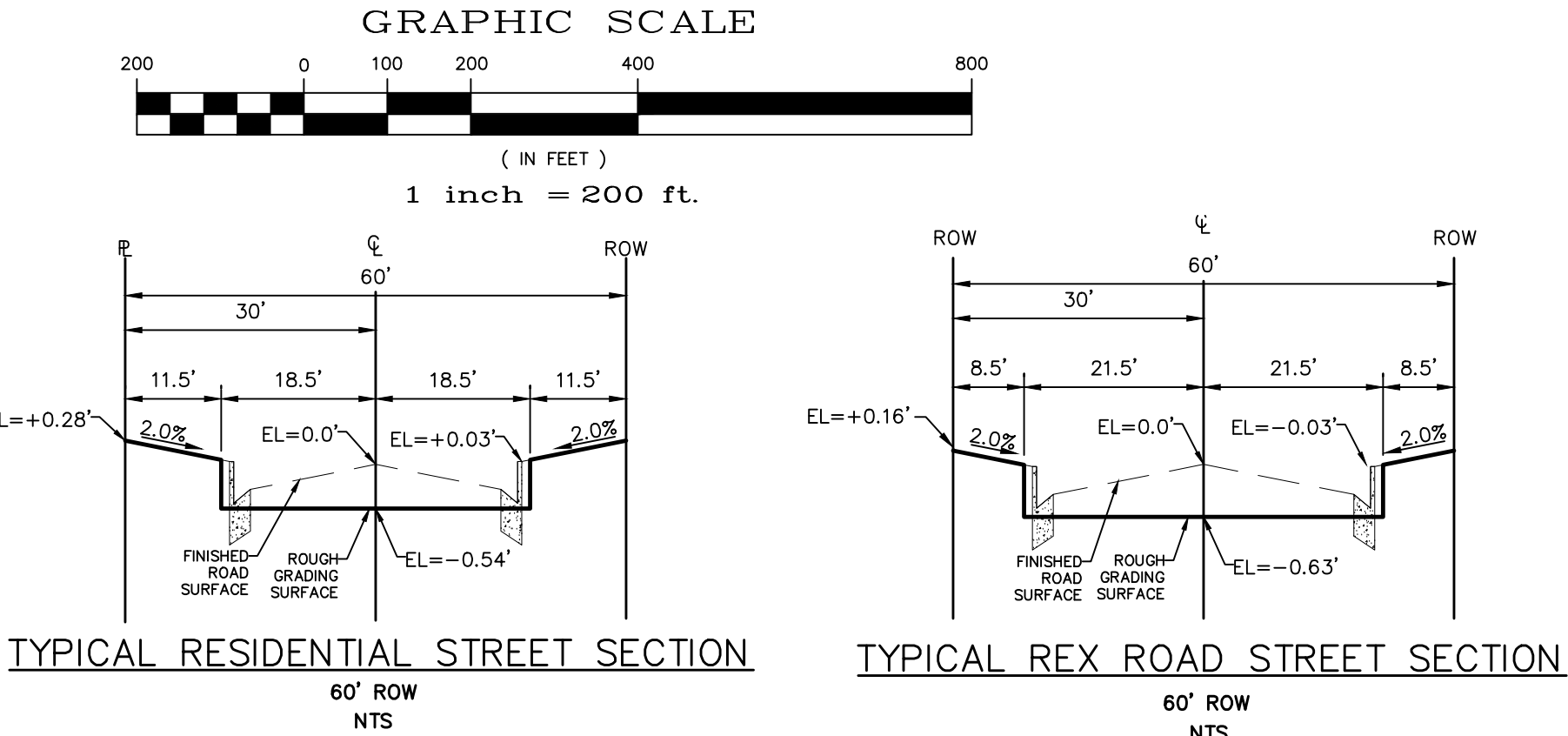
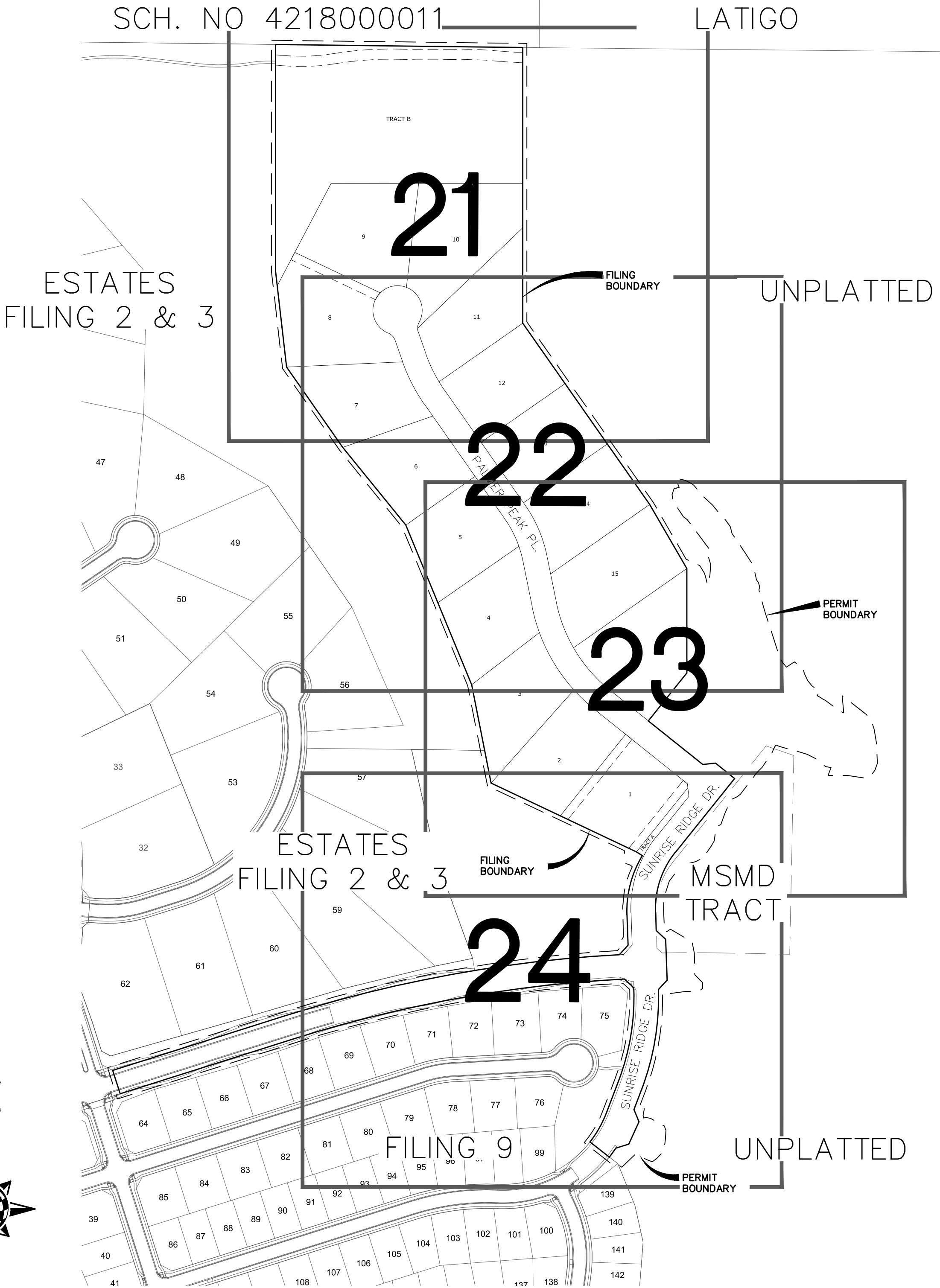
ALL DISTURBED AREAS SHALL BE REQUIRE SEEDING WITHIN TWO (2) WEEKS FOLLOWING THE ESTABLISHMENT OF FINAL GRADE. AREAS TO RECEIVE PAVEMENT DURING THE CONSTRUCTION OF THE ROAD SYSTEM SHALL NOT RECEIVE ANY SEEDING. SEEDING SHOULD BE ACCOMPLISHED USING AN APPROPRIATE GRASS DRILL, BY BROADCASTING OR BY HYDROMULCHING. IF SEEDING BY THE BROADCAST METHOD IS SELECTED THE APPLICATION RATE SHOULD BE DOUBLED. IF HYDROMULCHING IS SELECTED TWO OPERATIONS SHOULD BE CONSIDERED, APPLYING THE SEED FIRST AND THE MULCH IN A SECOND OPERATION. UPON COMPLETION OF THE SEEDING OPERATION THE SITE SHOULD BE COVERED WITH WEED FREE MULCH AT A RATE OF 4,000 LBS. PER ACRE. MULCH SHALL BE INSTALLED PER DCM VOLUME 2, FIGURE MU-1, FOUND ON PAGE 3-30.

BELOW IS THE ACCEPTED GRASS MIX FOR SANDY SOILS:

GRASS	VARIETY	AMOUNT IN PLS LBS. PER ACRE
SIDEOTS GRAMA	EL RENO	3.0
WESTERN WHEATGRASS	BARTON	2.5
SLENDER WHEATGRASS	NATIVE	2.0
LITTLE BLUESTERN	PASTURA	2.0
SAND DROPSSEED	NATIVE	0.5
SWITCH GRASS	NEBRASKA	3.0
WEEPING LOVE GRASS	MORPHA	1.0

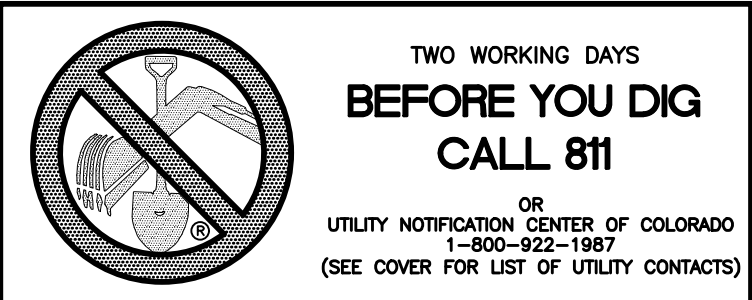
NOTE:



- 1) EXISTING VEGETATION ON THE PROJECT SITE AND THE IN SURROUNDING AREAS CONSISTS OF A MIXTURE OF NATIVE GRASSES AND WEEDS WITH COVERAGE APPROXIMATING 70% DENSITY UNLESS OTHERWISE NOTED. SOME AREAS HAVE NEGLIGIBLE VEGETATIVE GROWTH AT THIS TIME AS THE SITE WAS PREVIOUSLY GRADED AND RE-SEEDED OR USED AS A BUILDERS' STOCKPILE LOCATION. AREAS PREVIOUSLY GRADED HAS BEEN RE-SEEDED WITH THE APPROVED COUNTY SEED MIX.
- 2) MATERIAL STORAGE, TOPSOIL STOCKPILES, STAGING, CONCRETE WASHOUT AND WASTE AREAS SHALL BE IDENTIFIED BY THE CONTRACTOR PRIOR TO START OF CONSTRUCTION AND ADJUSTED AS NECESSARY.

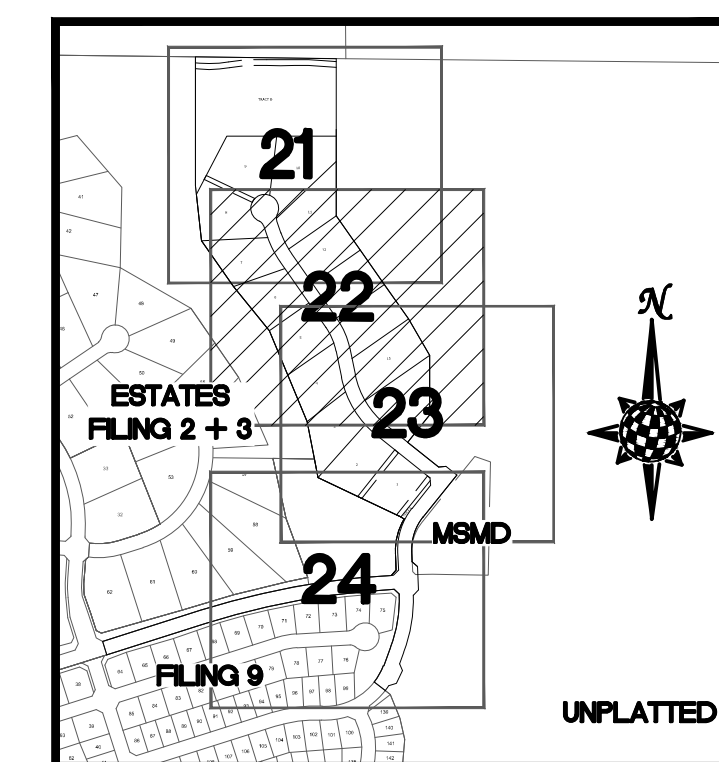
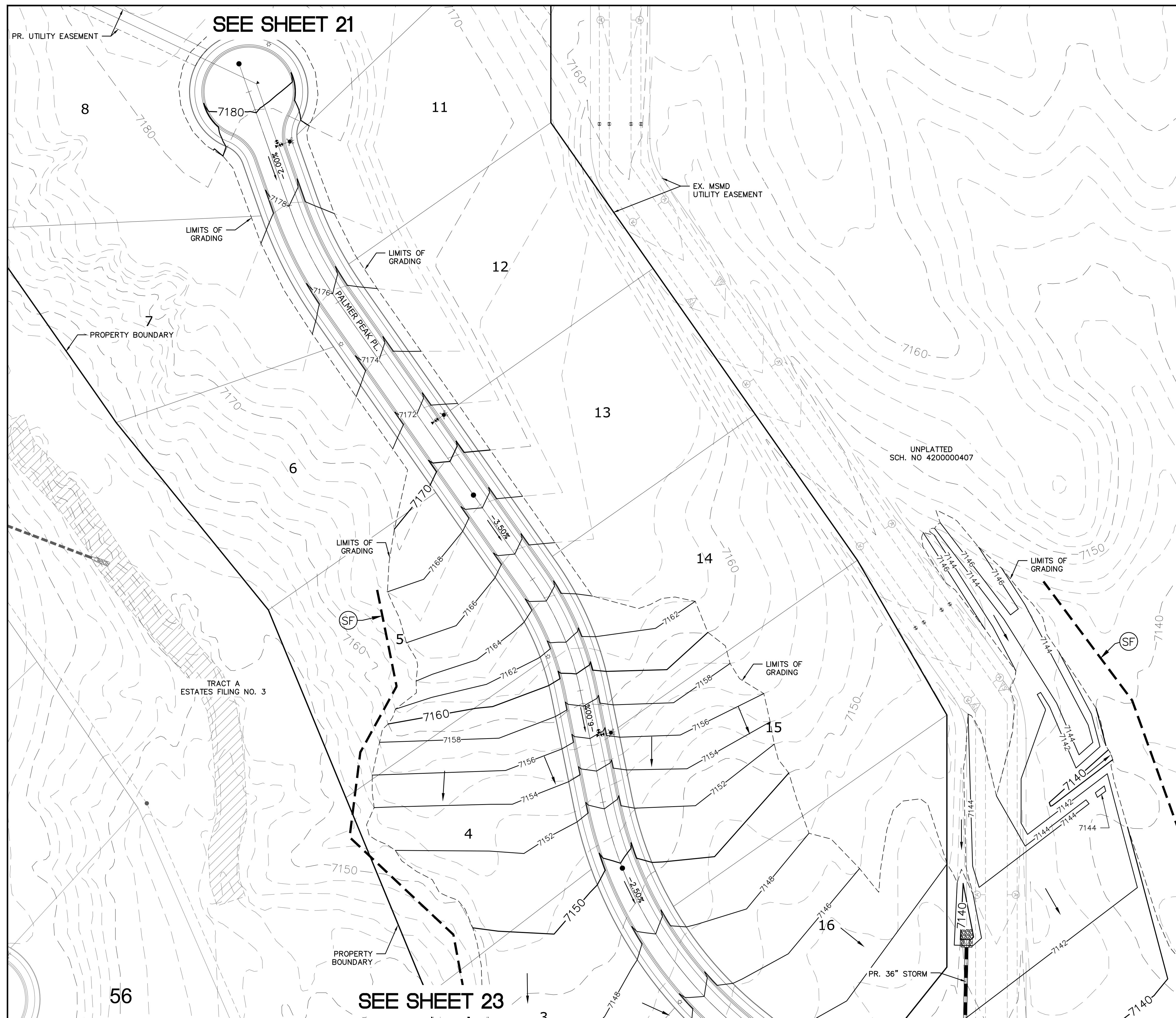


EARTHWORK QUANTITIES

NET YARDS	BALANCE	
TOTAL STRIPPINGS	12.18 AC.	6,550 CY
	CUT	FILL
NET YARDS	10,873 CY	11,400 CY
20% COMPACTION FACTOR		



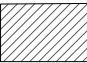





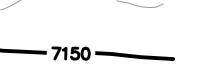
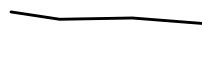
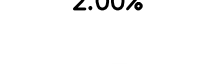


No.	Revisions	Date	Appr.	Date
1				
2				
3				
4				
TECH CONTRACTORS 11886 STAPLETON DRIVE FALCON, CO 80831 TELEPHONE: 719.495.7444 FAX: 719.495.2457				
 MERIDIAN RANCH				
THE ESTATES AT ROLLING HILLS RANCH FILING 1 GRADING/EROSION CONTROL PLAN INDEX SHEET				
Drawn by	Loc	Checked by	TAK	Date
Scale	AS SHOWN	20	of	26
FEB 2020				
				



INDEX MAP
N.T.S.

LEGEND

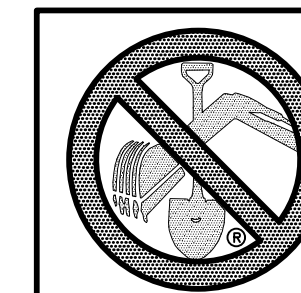
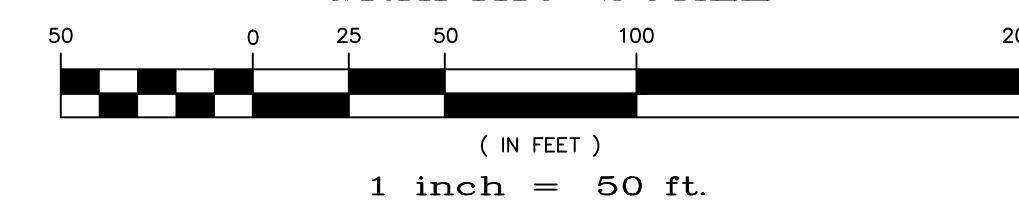
SYMBOL	ACRONYM	DESCRIPTION
		STRAW BALES
		EROSION WATTLES PER DETAIL SHEET 26
		EROSION CONTROL BLANKET PER DETAIL ECB-1 & ECB-2 DCM VOL. 2
	RCP	REINFORCED CONCRETE PIPE
	(SF)	SILT FENCE PER DETAIL SF-1, SF-2 & SF-3 DCM VOL. 2
	(VTC)	VEHICLE TRACKING CONTROL PER DETAIL VT-2 DCM VOL. 2
	(IP)	INLET PROTECTION PER DETAIL SHEET 26
		EXISTING CONTOUR (10')
		EXISTING CONTOUR (2')
		PROPOSED CONTOUR (10')
		PROPOSED CONTOUR (2')
2.00%		GRADE
75		LOT NUMBER
		LOT GRADE TYPE

NOTE:
ALL CONTOURS SHOWN WITHIN THE PLAN SET
ARE TO FINISHED SURFACE. ALL STREET
SECTIONS ARE TO BE GRADED TO ROUGH
SUB-GRADE AS SHOWN IN THEIR RESPECTIVE
TYPICAL STREET SECTION SHOWN ON SHEET 20.

CONTRACTOR SHALL PROTECT ALL EXISTING UTILITIES.
EX. UTILITIES SEE CONSTRUCTION DRAWINGS FOR:
1)MERIDIAN SERVICE METRO DISTRICT WATER
PLANT SITE PLAN & FLOOR PLAN
2)MERIDIAN RANCH FILING 9
3)THE ESTATES FILING 2 AT MERIDIAN RANCH
4)THE ESTATES FILING 3 AT MERIDIAN RANCH
5)GUTHRIE RAW WATER EXTENSION THE VISTAS
FILING 1 OFFSITE



GRAPHIC SCALE



**TWO WORKING DAYS
BEFORE YOU DIG
CALL 811**

OR
UTILITY NOTIFICATION CENTER OF COLORADO
1-800-922-1987
(SEE COVER FOR LIST OF UTILITY CONTACTS)

<i>No.</i>	<i>Revisions</i>	<i>Date</i>	<i>Init.</i>	<i>Appr.</i>	<i>Date</i>
1		-			
2		-			
3		-			
4		-			

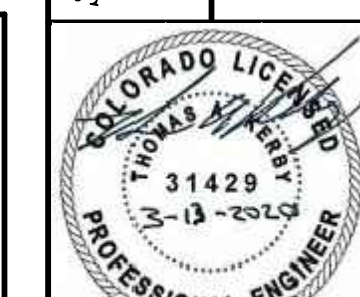
TECH CONTRACTORS
11886 STAPLETON DRIVE
FALCON, CO 80831
TELEPHONE: 719.495.7444
FAX: 719.495.2457

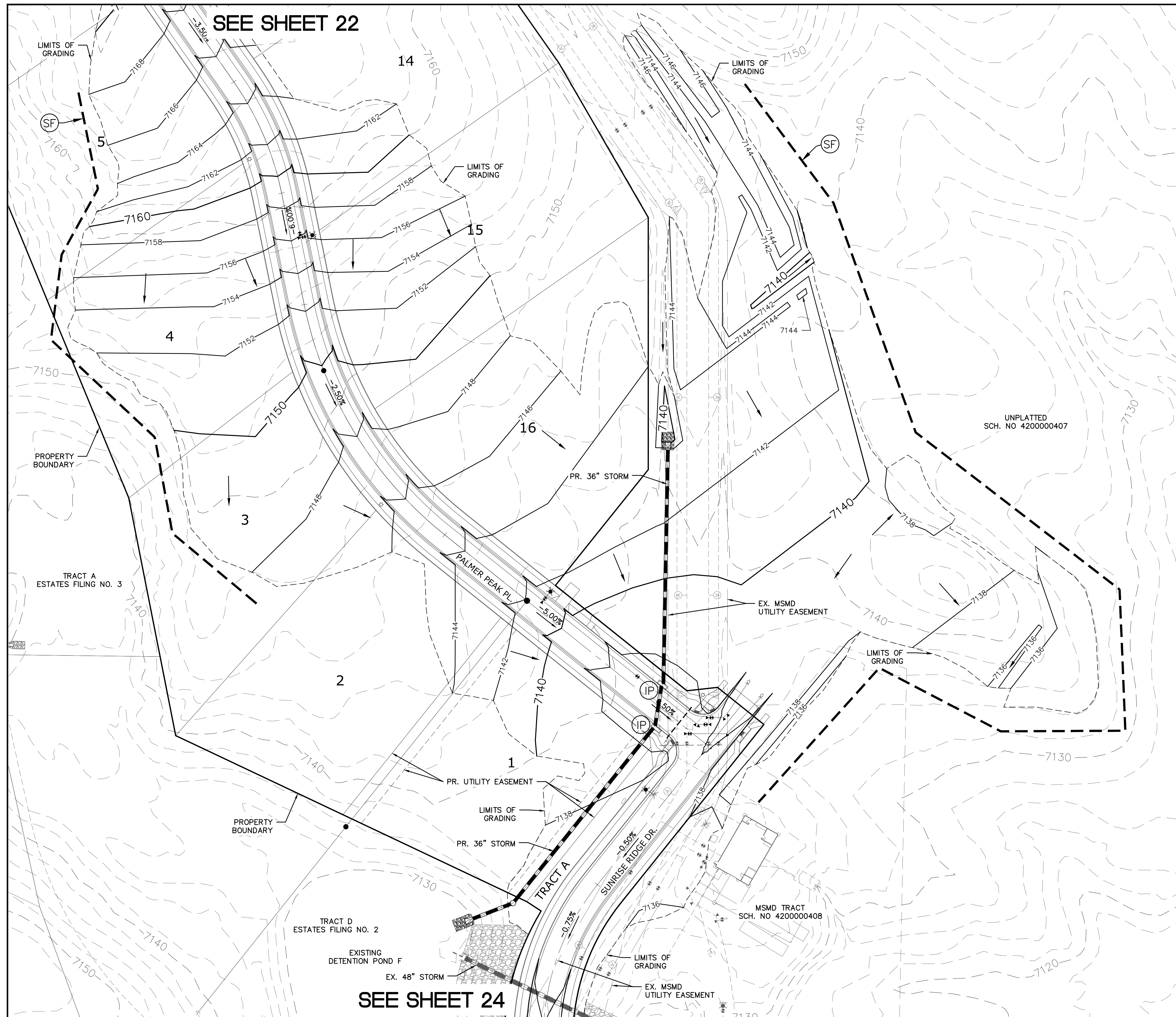

MERIDIAN BANK

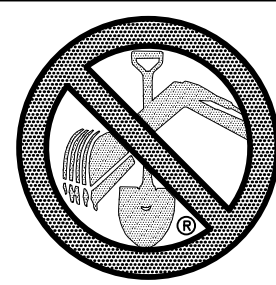
THE ESTATES AT
ROLLING HILLS RANCH FILING 1
GRADING+EROSION CONTROL PLAN
LAYOUT

Drawn by	LOG
Checked by	TAK
Date	

Scale
AS SHOWN
22 of 26





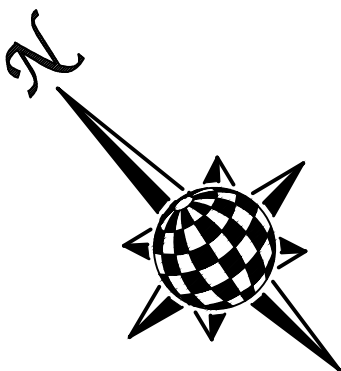


**TWO WORKING DAYS
BEFORE YOU DIG
CALL 811**

OR
UTILITY NOTIFICATION CENTER OF COLORADO
1-800-922-1987
(SEE COVER FOR LIST OF UTILITY CONTACTS)

NOTE:
ALL CONTOURS SHOWN WITHIN THE PLAN SET
ARE TO FINISHED SURFACE. ALL STREET
SECTIONS ARE TO BE GRADED TO ROUGH
SUB-GRADE AS SHOWN IN THEIR RESPECTIVE
TYPICAL STREET SECTION SHOWN ON SHEET 20

CONTRACTOR SHALL PROTECT ALL EXISTING UTILITIES.
EX. UTILITIES SEE CONSTRUCTION DRAWINGS FOR:
1)MERIDIAN SERVICE METRO DISTRICT WATER PLANT SITE PLAN & FLOOR PLAN
2)MERIDIAN RANCH FILING 9
3)THE ESTATES FILING 2 AT MERIDIAN RANCH
4)THE ESTATES FILING 3 AT MERIDIAN RANCH
5)GUTHRIE RAW WATER EXTENSION THE VISTAS FILING 1 OFFSITE



GRAPHIC SCALE



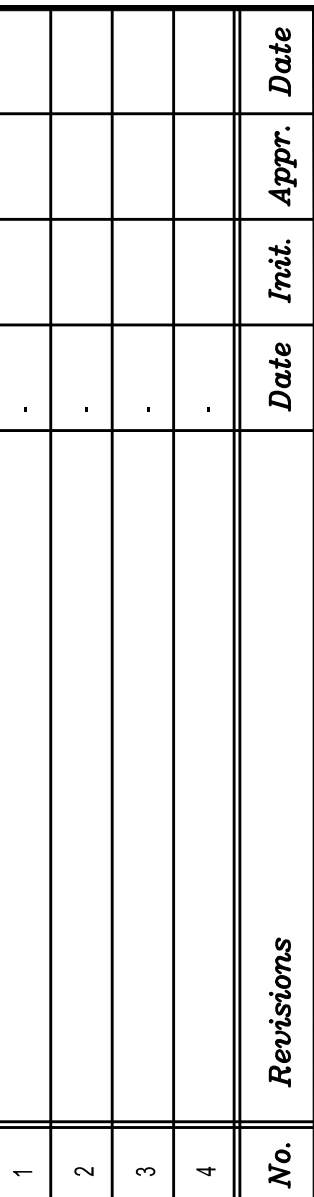
(IN FEET)

1 inch = 100 ft.

LEGEND:

AREAS OF CUT

AREAS OF FILL



TECH CONTRACTORS
11886 STAPLETON DRIVE
FALCON, CO 80831

TELEPHONE: 719.495.7444
FAX: 719.495.2457



MERIDIAN RANCH

THE ESTATES AT
ROLLING HILLS RANCH FILING 1
GRADING+EROSION CONTROL PLAN
LAYOUT

Drawn by LOG	Checked by TAK	Date
-----------------	-------------------	------

Scale

AS SHOWN

25 of 26



