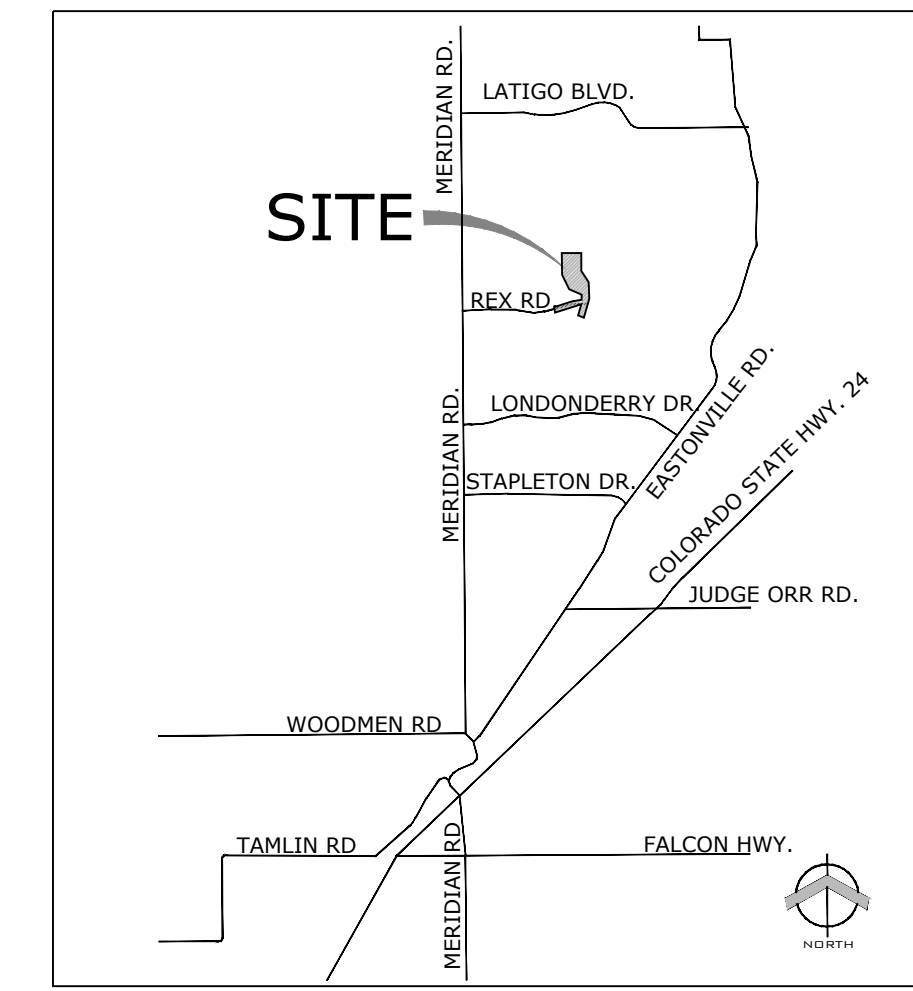


THE ESTATES AT ROLLING HILLS RANCH FILING 1

PUD DEVELOPMENT PLAN / PRELIMINARY PLAN

SECTION 19 AND 20, IN TOWNSHIP 12 SOUTH, RANGE 64 WEST OF THE 6TH PRINCIPAL MERIDIAN, EL PASO COUNTY, COLORADO.

VICINITY MAP



OWNER / SUBDIVIDER
GTL, Inc.
3575 Kenyon St.
San Diego, CA 92110

PLANNER
N.E.S. Inc.
619 N. Cascade Ave., Ste. 200
Colorado Springs, CO 80903
(719) 471-0073

Land Planning
Landscape Architecture
Urban Design

N.E.S. Inc.
619 N. Cascade Ave., Ste. 200
Colorado Springs, CO 80903
Tel. 719.471.0073
Fax 719.471.0267
www.nescolorado.com
© 2012. All Rights Reserved.

PUD BOUNDARY DESCRIPTION

KNOW ALL MEN BY THESE PRESENTS: THAT GTL, INC., DBA GTL DEVELOPMENT, INC., THEODORE TCHANG, PRESIDENT AND MERIDIAN SERVICE METROPOLITAN DISTRICT BEING THE OWNERS OF THE FOLLOWING DESCRIBED TRACTS OF LAND:

A PARCEL OF LAND LOCATED IN A PORTIONS OF SECTION 20 AND 29, IN TOWNSHIP 12 SOUTH, RANGE 64 WEST OF THE 6TH PRINCIPAL MERIDIAN, MORE PARTICULARLY DESCRIBED AS FOLLOWS:

BEGINNING AT THE NORTHEASTERN MOST CORNER OF TRACT C OF MERIDIAN RANCH FILING NO. 9, RECORDED WITH RECEPTION NO. 216713763 IN THE RECORDS OF EL PASO COUNTY;

1. THENCE N51°53'30"W ON SAID TRACT LINE A DISTANCE OF 26.13 FEET TO A CURVE TO THE RIGHT;
2. THENCE ON THE ARC OF SAID CURVE, HAVING A RADIUS OF 330.00 FEET, A DELTA ANGLE OF 04°41'46", AN ARC LENGTH OF 27.05 FEET, WHOSE LONG CHORD BEARS N35°45'37"E A DISTANCE OF 27.04 FEET;
3. THENCE N72°56'20"E A DISTANCE OF 32.99 FEET;
4. THENCE N24°30'35"E A DISTANCE OF 60.00 FEET;
5. THENCE N22°23'52"W A DISTANCE OF 33.06 FEET;
6. THENCE N20°49'43"E A DISTANCE OF 52.81 FEET TO A CURVE TO THE LEFT;
7. THENCE ON THE ARC OF SAID CURVE, HAVING A RADIUS OF 630.00 FEET, A DELTA ANGLE OF 22°38'05", AN ARC LENGTH OF 348.88 FEET, WHOSE LONG CHORD BEARS N09°30'41"E A DISTANCE OF 247.27 FEET;
8. THENCE N42°56'08"E A DISTANCE OF 31.12 FEET;
9. THENCE N02°04'24"W A DISTANCE OF 100.00 FEET;
10. THENCE N07°55'36"E A DISTANCE OF 348.00 FEET TO A CURVE TO THE RIGHT;
11. THENCE ON THE ARC OF SAID CURVE, HAVING A RADIUS OF 1000.00 FEET, A DELTA ANGLE OF 06°09'39", AN ARC LENGTH OF 107.53 FEET, WHOSE LONG CHORD BEARS S88°59'34"E A DISTANCE OF 107.48 FEET;
12. THENCE S85°54'45"E A DISTANCE OF 400.64 FEET TO A CURVE TO THE RIGHT;
13. THENCE ON THE ARC OF SAID CURVE, HAVING A RADIUS OF 7540.00 FEET, A DELTA ANGLE OF 03°02'05", AN ARC LENGTH OF 399.38 FEET, WHOSE LONG CHORD BEARS S84°23'42"E A DISTANCE OF 399.33 FEET;
14. THENCE S07°07'21"W A DISTANCE OF 100.00 FEET TO A NON-TANGENT CURVE TO THE RIGHT;
15. THENCE ON THE ARC OF SAID CURVE, HAVING A RADIUS OF 7440.00 FEET, A DELTA ANGLE OF 00°18'41", AN ARC LENGTH OF 40.44 FEET, WHOSE LONG CHORD BEARS S82°43'19"E A DISTANCE OF 40.44 FEET;
16. THENCE S82°33'58"E A DISTANCE OF 1906.13 FEET;
17. THENCE S28°18'46"E A DISTANCE OF 1200.00 FEET;
18. THENCE N06°58'47"E A DISTANCE OF 400.00 FEET;
19. THENCE S44°45'04"E A DISTANCE OF 478.58 FEET TO A POINT ON THE WESTERLY BOUNDARY OF FALCON REGIONAL PARK, RECORDED WITH RECEPTION NO. 214096227 IN THE RECORDS OF EL PASO COUNTY;

THE FOLLOWING TWO (2) COURSES ARE ON SAID BOUNDARY LINE:

20. THENCE S45°14'56"W A DISTANCE OF 1150.00 FEET;
21. THENCE S00°11'44"E A DISTANCE OF 550.00 FEET;
22. THENCE S00°34'48"W A DISTANCE OF 80.00 FEET;
23. THENCE N89°25'12"W A DISTANCE OF 715.30 FEET;
24. THENCE S45°34'48"W A DISTANCE OF 14.54 FEET;
25. THENCE S00°34'48"W A DISTANCE OF 236.58 FEET;
26. THENCE S05°23'19"E A DISTANCE OF 103.70 FEET;
27. THENCE S17°01'39"E A DISTANCE OF 103.70 FEET;
28. THENCE S2°59'45"W A DISTANCE OF 174.64 FEET TO A POINT ON THE NORTHERLY BOUNDARY OF FALCON HIGH SCHOOL, RECORDED WITH RECEPTION NO. 206058517 IN THE RECORDS OF EL PASO COUNTY;
29. THENCE S89°19'41"W A DISTANCE OF 21.70 FEET ALONG SAID BOUNDARY;
30. THENCE S07°31'44"W A DISTANCE OF 80.00 FEET TO A POINT ON THE EASTERLY BOUNDARY OF MERIDIAN RANCH FILING NO. 11A, RECORDED WITH RECEPTION NO. 214713513 IN THE RECORDS OF EL PASO COUNTY AND A NON-TANGENT CURVE TO THE LEFT;

THE FOLLOWING NINE (9) COURSES ARE ON SAID BOUNDARY LINE:

31. THENCE ON THE ARC OF SAID CURVE, HAVING A RADIUS OF 1710.00 FEET, A DELTA ANGLE OF 00°31'29", AN ARC LENGTH OF 15.66 FEET, WHOSE LONG CHORD BEARS N22°44'00"W A DISTANCE OF 15.66 FEET;
32. THENCE N25°05'45"W A DISTANCE OF 63.09 FEET;
33. THENCE S86°16'43"W A DISTANCE OF 450.00 FEET;
34. THENCE N63°51'45"W A DISTANCE OF 640.00 FEET;
35. THENCE N30°07'09"W A DISTANCE OF 150.37 FEET;
36. THENCE N81°02'28"W A DISTANCE OF 138.95 FEET;
37. THENCE N05°41'51"W A DISTANCE OF 647.93 FEET;
38. THENCE N80°23'28"W A DISTANCE OF 503.71 FEET;
39. THENCE S72°14'49"W A DISTANCE OF 634.05 FEET TO A POINT ON THE EASTERLY BOUNDARY OF MERIDIAN RANCH FILING NO. 8, RECORDED WITH RECEPTION NO. 215713635 IN THE RECORDS OF EL PASO COUNTY;

THE FOLLOWING ELEVEN (11) COURSES ARE ON SAID BOUNDARY LINE:

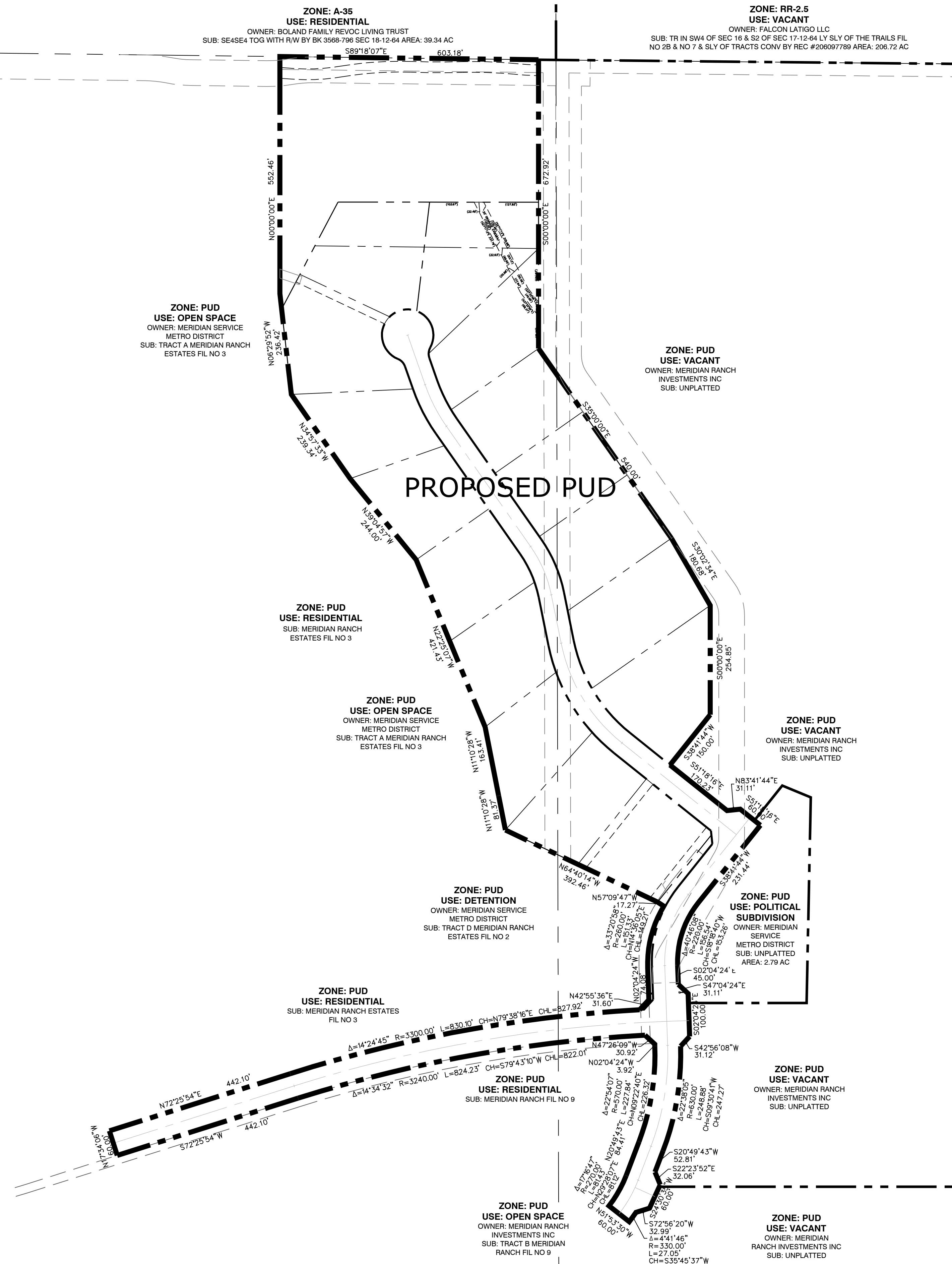
40. THENCE N05°03'36"W A DISTANCE OF 165.00 FEET;
41. THENCE N20°15'12"W A DISTANCE OF 165.00 FEET;
42. THENCE N31°56'25"W A DISTANCE OF 165.00 FEET;
43. THENCE N42°44'55"W A DISTANCE OF 102.00 FEET;
44. THENCE N55°18'55"W A DISTANCE OF 75.00 FEET;
45. THENCE N36°06'38"E A DISTANCE OF 108.00 FEET;
46. THENCE N49°25'35"W A DISTANCE OF 134.00 FEET;
47. THENCE N33°45'49"W A DISTANCE OF 132.00 FEET;
48. THENCE N17°12'24"W A DISTANCE OF 137.00 FEET;
49. THENCE N09°04'23"W A DISTANCE OF 85.86 FEET;
50. THENCE N03°22'02"E A DISTANCE OF 74.77 FEET TO A POINT ON THE EASTERLY BOUNDARY OF SAID MERIDIAN RANCH FILING NO. 9;

THE FOLLOWING SEVEN (7) COURSES ARE ON SAID BOUNDARY LINE:

51. THENCE N10°04'06"W A DISTANCE OF 162.63 FEET;
52. THENCE N26°31'01"W A DISTANCE OF 218.96 FEET;
53. THENCE N06°43'25"W A DISTANCE OF 140.00 FEET;
54. THENCE N01°13'59"W A DISTANCE OF 97.14 FEET;
55. THENCE N04°28'51"E A DISTANCE OF 360.75 FEET;
56. THENCE N12°48'36"W A DISTANCE OF 91.63 FEET;
57. THENCE N22°11'16"W A DISTANCE OF 110.06 FEET TO THE POINT OF BEGINNING.

THE ABOVE PARCEL OF LAND CONTAINS 251.094 ACRES, MORE OR LESS.

BEARINGS ARE BASED ON THE SOUTH LINE OF THE SW ¼ OF SECTION 29, TOWNSHIP 12 SOUTH, RANGE 64 WEST OF THE 6TH P.M., ASSUMED TO BEAR S89°25'42"E FROM THE SOUTHWEST CORNER OF SAID SECTION 29 (A STONE W/SCRIBED "X") TO THE SOUTH QUARTER CORNER OF SAID SECTION 29 (3.25" ALUM. CAP 15 #30087).



The Estates at
Rolling Hills
Ranch
Filing 1

PUD Development Plan /
Preliminary Plan

DATE: September 25, 2019
PROJECT MGR: J. Romero
PREPARED BY: K. Marshall

ENTITLEMENT

DATE	BY	DESCRIPTION
01.06.2020	B.I.	Per County Comments

ZONING MAP

1
OF 1

PCD# PUDSP-19-007