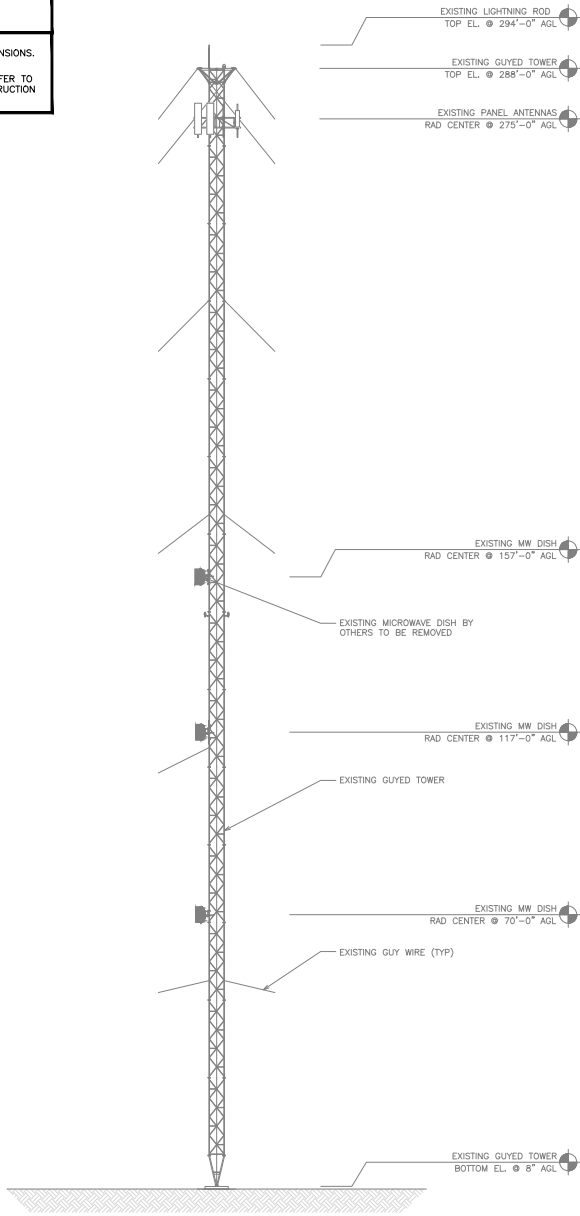
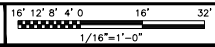


NOTES

1. CONTRACTOR SHALL FIELD VERIFY ALL DIMENSIONS.
2. ANTENNA AND MW DISH SPECIFICATIONS REFER TO ANTENNA SCHEDULE AND TO FINAL CONSTRUCTION RFDS FOR ALL RF DETAILS



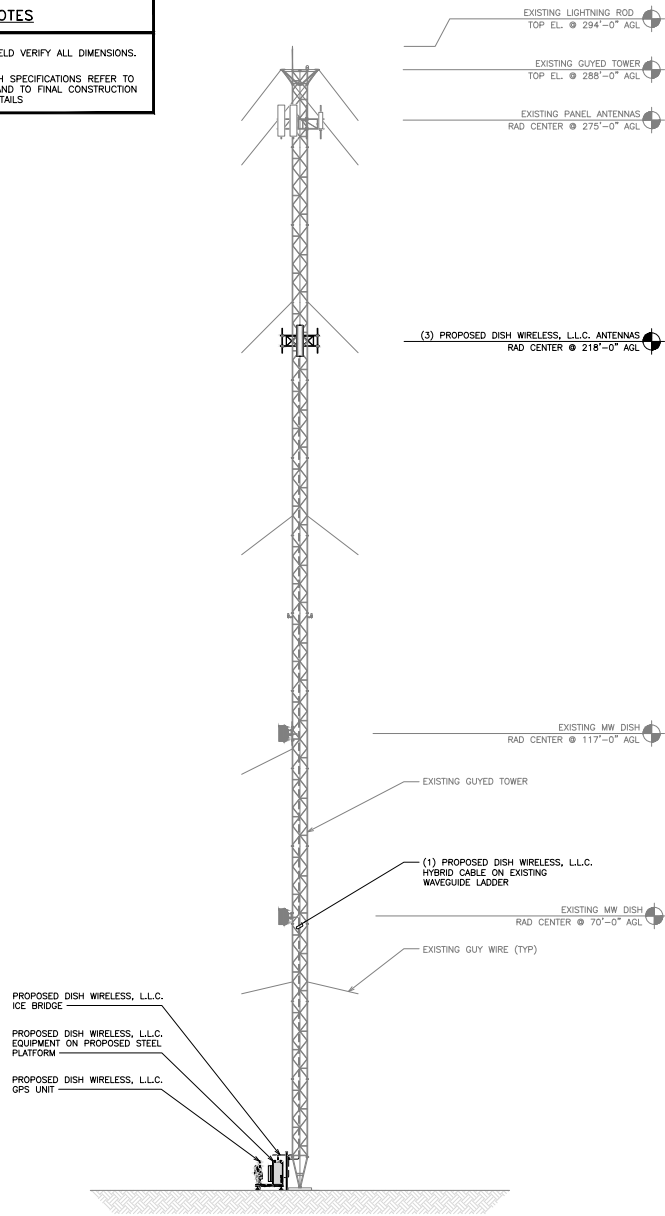
EXISTING NORTHEAST ELEVATION



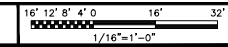
1

NOTES

1. CONTRACTOR SHALL FIELD VERIFY ALL DIMENSIONS.
2. ANTENNA AND MW DISH SPECIFICATIONS REFER TO ANTENNA SCHEDULE AND TO FINAL CONSTRUCTION RFDS FOR ALL RF DETAILS



PROPOSED NORTHEAST ELEVATION



2



5701 SOUTH SANTA FE DRIVE
LITTLETON, CO 80120



TOWER ENGINEERING PROFESSIONALS
326 TRYON RD. RALEIGH, NC
27603 OFFICE: (919) 661-6351



October 26, 2021

IT IS A VIOLATION OF LAW FOR ANY PERSON, UNLESS THEY ARE ACTING UNDER THE DIRECTION OF A LICENSED PROFESSIONAL ENGINEER, TO ALTER THIS DOCUMENT.

DRAWN BY: SVJ CHECKED BY: JFJ APPROVED BY: BAP

RFDS REV #: 1

CONSTRUCTION DOCUMENTS

| SUBMITTALS | | |
|------------|----------|--------------|
| REV | DATE | DESCRIPTION |
| A | 04-15-21 | PRELIMINARY |
| 0 | 06-02-21 | CONSTRUCTION |
| 1 | 09-17-21 | CONSTRUCTION |
| 2 | 10-28-21 | CONSTRUCTION |

A&E PROJECT NUMBER
855759

DISH WIRELESS, L.L.C. PROJECT INFORMATION
DNDEN00239A
CO-CCI-T-855759
2160 N BLANEY RD
CO SPRINGS, CO 80929

SHEET TITLE
TOWER ELEVATIONS

SHEET NUMBER

A-2.1