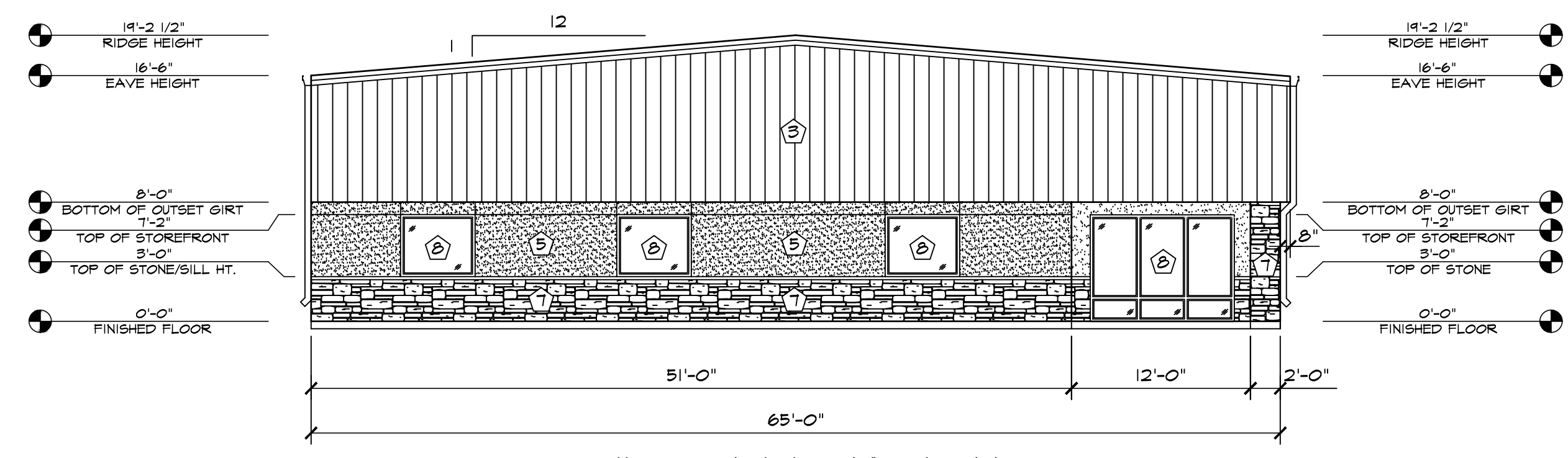
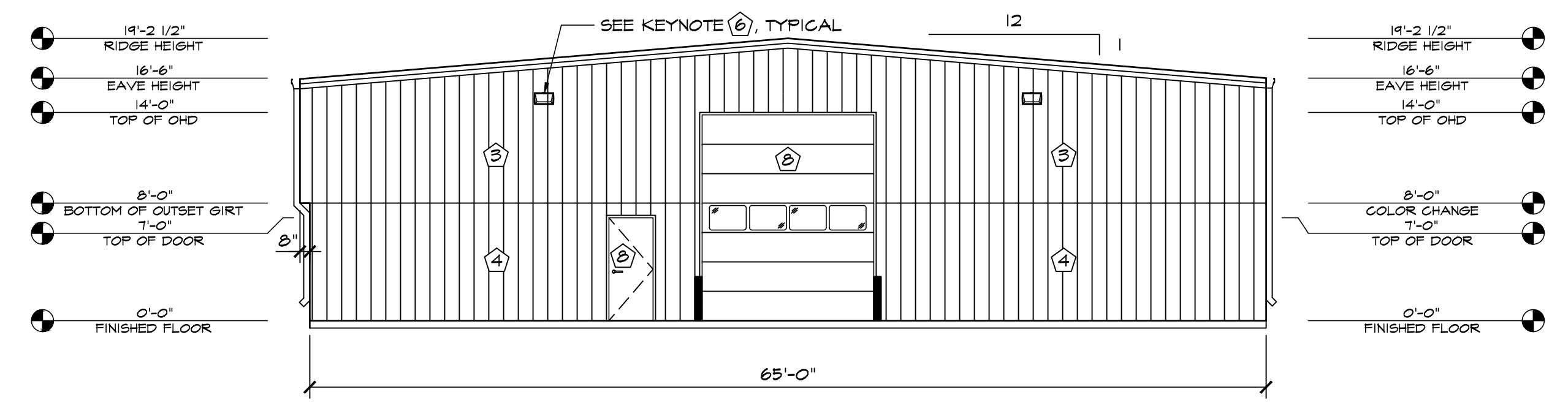


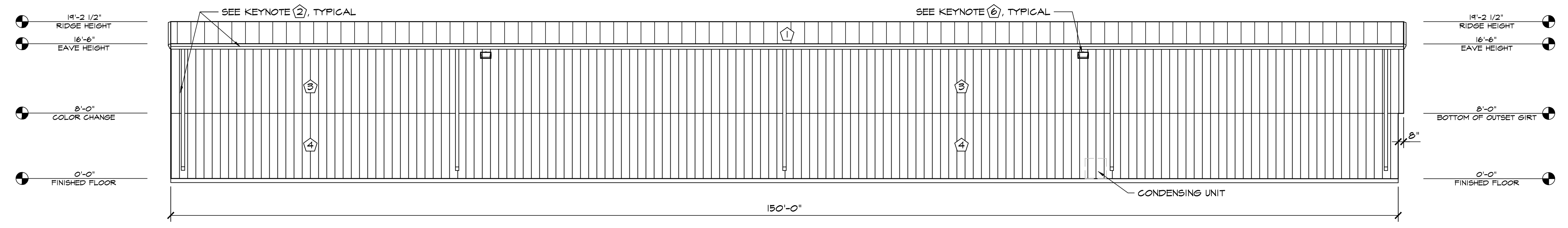
1 SOUTH ELEVATION  
SCALE: 1/8"=1'-0"



2 WEST ELEVATION  
SCALE: 1/8"=1'-0"



3 EAST ELEVATION  
SCALE: 1/8"=1'-0"



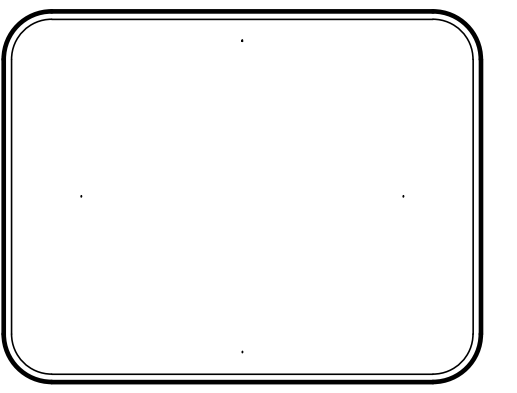
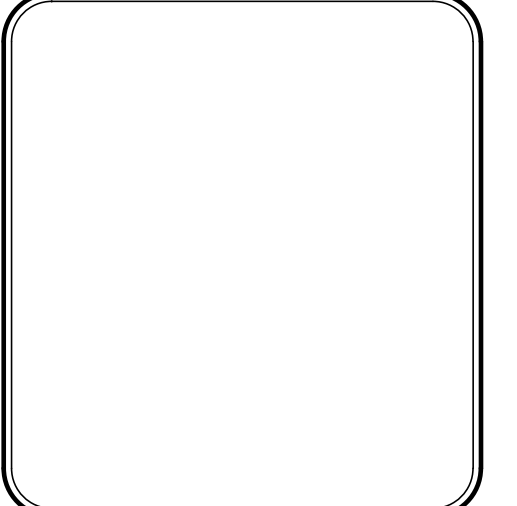
4 NORTH ELEVATION  
SCALE: 1/8"=1'-0"

ELEVATION KEY NOTES	
1	PREFINISHED 24 GA. "PBR" METAL ROOF PANELS BY METAL BUILDING PROVIDER - COLOR: ASH GRAY
2	PREFINISHED GUTTER & DOWNSPOUTS BY METAL BUILDING PROVIDER
3	PREFINISHED 26 GA. "PBR" METAL WALL PANELS BY METAL BUILDING PROVIDER - COLOR: ASH GRAY
4	PREFINISHED 26 GA. "PBR" METAL WALL PANELS BY METAL BUILDING PROVIDER - COLOR: SOLAR WHITE
5	3/4" STUCCO FINISH SYS. W/ EXPANSION JOINT-120 SF MAX AREA
6	WALL PACK LIGHT TOP OF LIGHT @ 15'-6" A.F.F. SEE ELECT. PLANS
7	STONE VENEER WITH 2" CAP INSTALLED W/ SCHLUTER TRIM
8	SEE SCHEDULES ON "A" SHEETS FOR ALL DOOR AND WINDOW INFORMATION

**HAMMERS CONSTRUCTION INC.**  
COMMERCIAL GENERAL CONTRACTORS SPECIALIZING IN DESIGN/BUILD  
PRESIDENT: STEVE R. HAMMERS  
VICE PRES: DAVID J. HAMMERS  
1411 WOOLSEY HEIGHTS  
COLORADO SPRINGS, CO 80915  
(719) 570-1599 FAX (719) 570-7008  
www.hammersconstruction.com

THIS DRAWING CONTAINS MATERIAL & INFORMATION WHICH MAY NOT BE REPRODUCED WITHOUT WRITTEN CONSENT OF HAMMERS CONSTRUCTION INC. THESE DRAWINGS ARE INTENDED TO BE USED ONLY BY HAMMERS CONSTRUCTION & ITS REPRESENTATIVES. THESE DRAWINGS HAVE NOT BEEN PREPARED FOR ANY OTHER PURPOSE THAN TO INDICATE THE GENERAL FEATURES AND PLACEMENT OF THE PROPOSED PROJECT. COPYRIGHT © 2022 HAMMERS CONSTRUCTION

**SMELKER-HCI**  
NEW BUILDING  
7920 INDUSTRY ROAD  
COLORADO SPRINGS, CO 80939  
EL PASO COUNTY, COLORADO



DATE: JUNE 24, 2022  
DRAWN BY: J. LATHAM  
PROJ. MGR: E. SMITH  
SCALE: SEE PLAN  
APPROVED BY:  
JOB NO: 1291

RESUBMITTALS:	
Δ	9-1-22/COMMENTS 8-2-22
Δ	10-18-22/COMMENTS 10-17-22
Δ	
Δ	
Δ	