

## LAYOUT NOTES

CONTRACTOR IS RESPONSIBLE FOR INSTALLING ALL LANDSCAPE SHOWN ON THIS PLAN. ANY DEVIATIONS FROM THIS PLAN ARE TO BE APPROVED BY OWNER'S REPRESENTATIVE OR LANDSCAPE ARCHITECT. DEVIATIONS FROM THE APPROVED PLAN WILL REQUIRE APPROVAL BY EL PASO COUNTY AND OWNER REPRESENTATIVE.

## IRRIGATION SYSTEM NOTE

NOTE: IRRIGATION SYSTEM TO BE DESIGN/BUILD FOR ALL PLANTING AREAS WITH DRIP FOR ALL PLANTS. COORDINATE WITH GENERAL CONTRACTOR AND OWNER.

## CODE REQUIREMENTS

LANDSCAPE SETBACKS (LS)					
STREET NAME OR ZONE BOUNDARY (ELEV.)	STREET CLASSIFICATION	WIDTH (FT.) REQ./PROV.	LINEAR FOOTAGE	TREE FEET REQUIRED	NO. OF TREES REQ./PROVIDED
INDUSTRY MARKSHEFFEL	ARTERIAL	10' @ 10 FT	294	1/30 FT	10' @ 150 SHRUBS SUBSTITUTES
	ARTERIAL	10' @ 10 FT	148	1/30 FT	5:5

MOTOR VEHICLE LOTS (MV)				
NO. OF VEHICLE SPACES PROVIDED	SHADE TREES (1/5 SPACES) REQ./PROV.	VEHICLE LOT FRONTAGE (FT.)	FRONTAGE (FT.)	2/3 LENGTH OF FRONTAGE (FT.)
11	1/1	INDUSTRY	156 LF	106 LF
MIN. 3' HT. SCREENING PLANTS REQ./PROV.	EVERGREEN PLANTS REQ./PROV.			
2/21	1/14			

INTERNAL LANDSCAPING (IL)			
INTERNAL LANDSCAPE AREA INCLUDES ALL LANDSCAPE AREAS NOT INCLUDING SETBACKS, BUFFERS OR MOTOR VEHICLE ISLANDS.			
NET SITE AREA (SF) (LESS PUBLIC ROW)	PERCENT MINIMUM INTERNAL AREA (1/3)	INTERNAL AREA (SF)	INTERNAL TREES (1/500 SF) (EXCLUDING DRIVEWAYS)
43,540 SF	NON-RESIDENTIAL	279 SF / 2,200 SF	5/5 (2 EXISTING)
SHRUB SUBSTITUTES (50%) REQ./PROV.	INTERNAL PLANT ABBR. DENOTED ON PLAN	PERCENT GROUND PLANE VEG. REQ./PROV.	
20/20	IL	50%/50%	

LANDSCAPE BUFFERS AND SCREENS (LS)			
STREET NAME OR PROPERTY LINE (ELEV.)	LINEAR FOOTAGE	SETBACK BUFFER REQ. / PROV./FENCE	EVERGREEN TREES (1/3) REQ./PROV. - NA
NA	---	SETBACK BUFFER REQ./PROV. - NA	EVERGREEN TREES (1/3) REQ./PROV. - NA

## PLANT SCHEDULE

Symbol	Abbr.	Quantity	Botanical Name	Common Name	Colo. spgs Key from App. B	Mature Size W x H	B & B Planting Size
<b>DECIDUOUS TREES:</b>							
●	ALJ	6	<i>Ametancler laevis</i> 'JFS-Art'	Spring Flurry Serviceberry	S	20 x 25'	1-1/2" cal.
●	GISM	1	<i>Gleditsia triacanthos</i> 'Shademaster'	Shademaster Honeylocust	AD	30 x 25'	2-1/2" cal.
PERCENT SIGNATURE TREES REQUIRED: 60% TOTAL NO. OF TREES/SIGNATURE TREES: 100% SIGNATURE TREES							
<b>**SIGNATURE TREES</b>							
<b>EVERGREEN SHRUBS:</b>							
●	JA	10	<i>Juniperus chinensis</i> 'Armstrong'	Armstrong Juniper	DA	3'-4' x 3'-4'	5 gal.
●	JL	3	<i>Juniperus sabin</i>	Buffalo Juniper	568A	6'-8' x 12'-18"	5 gal.
●	JR	18	<i>Juniperus horizontalis</i> 'Wiltonii'	Blue Rug Juniper	DA	6'-8' x 6'-8"	5 gal.
●	JCS	4	<i>Juniperus x chinensis</i> 'Spartan'	Spartan Juniper	DA	3'-4' x 12'-15"	5 gal.
<b>DECIDUOUS SHRUBS:</b>							
●	PFG	17	<i>Potentilla fruticosa</i> 'Gold Finger'	Gold Finger Potentilla	A	4'-5' x 3'-4'	5 gal.
●	POS	3	<i>Viburnum trilobum</i> 'Spring Green'	Spring Green Compact Viburnum	A	3'-4' x 5'-6"	5 gal.
●	PB	11	<i>Prunus besseyi</i>	Western Sand Cherry	1345A	5'-8' x 5'-6"	5 gal.
●	SJ	27	<i>Spiraea japonica</i> 'Majic Carpet'	Majic Carpet Spiraea	SA	1'-2' / 1'-2'	5 gal.
●	SV	16	<i>Spiraea vanhouttei</i>	Vanhouttei Spiraea	SA	5'-6' x 4'-5"	5 gal.
PERCENT SIGNATURE SHRUBS REQUIRED: 60% TOTAL NO. OF SHRUBS/SIGNATURE SHRUBS: 100% SIGNATURE SHRUBS							
<b>**SIGNATURE SHRUBS</b>							
<b>PERENNIALS:</b>							
●	HEM	30	<i>Hemerocallis</i> 'Red Magic'	Red Magic Daylily	D	18" x 12"	#1 CONT.

NOTE: QUANTITIES SHOWN IN LEGEND ARE FOR CONVENIENCE ONLY. CONTRACTOR IS RESPONSIBLE FOR INSTALLING ALL MATERIALS PER PLAN.

## GROUND COVER LEGEND

SYMBOL	DESCRIPTION	APPROX. SF
■	Denver Granite Decorative Rock: 3/4" Diameter (with weed barrier) Submit spec to owner prior to ordering material	8,966 SF
■	NON-Irrigated Seed Grass. Seed Mix 'A'. Refer to notes. Submit spec to owner prior to ordering material	2,360 SF
■	Protect Existing Landscape	
+	Protect Existing Tree	
○	Remove Existing Tree	
—	Steel Edger. See notes	

NOTE: QUANTITIES SHOWN IN LEGEND ARE FOR CONVENIENCE ONLY. CONTRACTOR IS RESPONSIBLE FOR INSTALLING ALL MATERIALS PER PLAN.

## GRADE NOTE

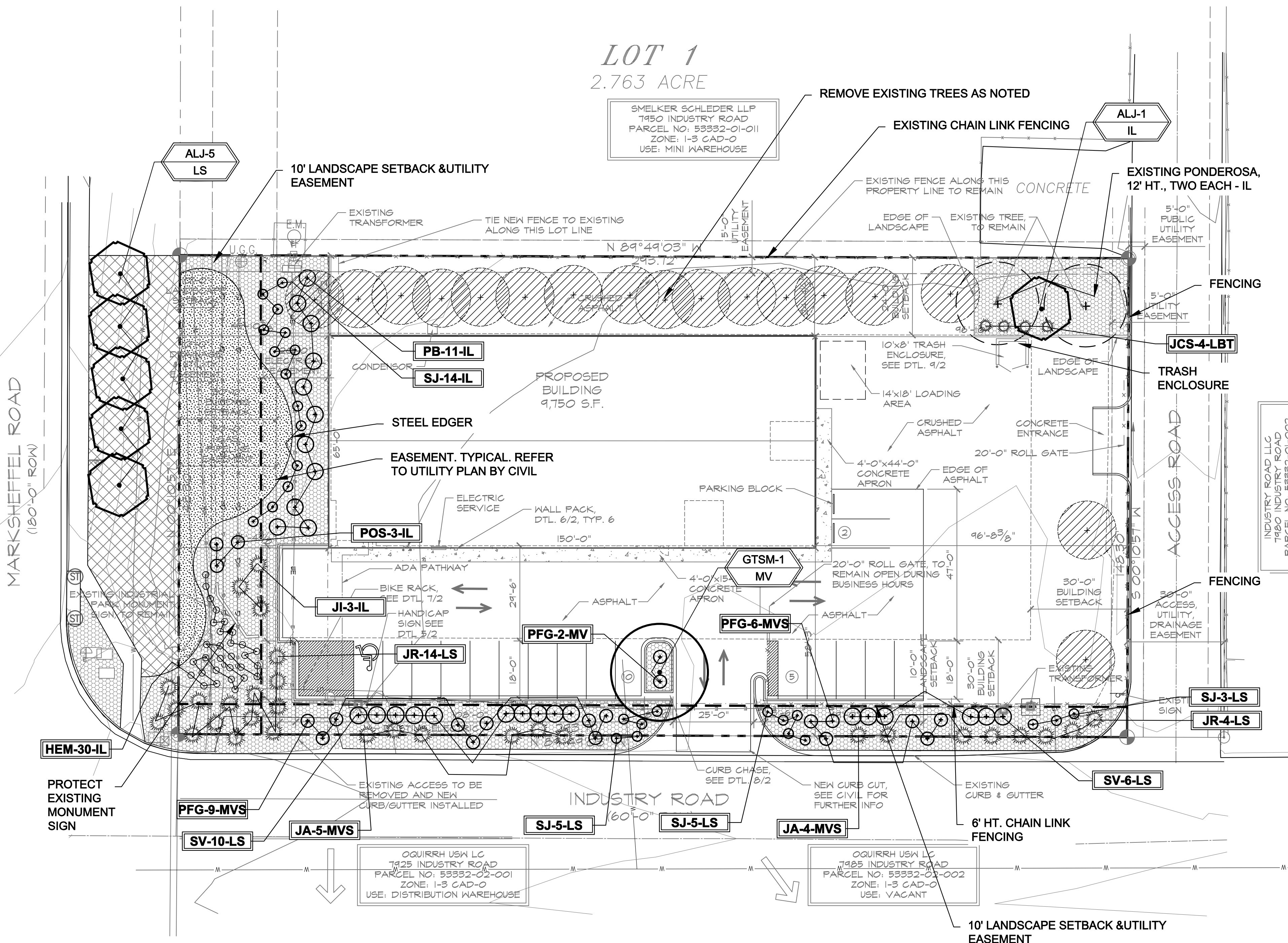
GRADE SHALL BE ESTABLISHED BASED ON GRADING PLAN BY OTHERS, AND FOR LANDSCAPE MATERIALS PER PLAN. FINAL SOIL GRADE FOR 5-12" DIAMETER ROCK AREAS SHALL BE 4" BELOW TOP OF SIDEWALK/CURB/PAVING. AT ALL OTHER ROCK AREAS GRADE SHALL BE 3" BELOW SIDEWALK/CURB. AT SOIL/SEED AREAS GRADE SHALL BE 1" BELOW TOP OF SIDEWALK/CURB.

## UTILITIES NOTE

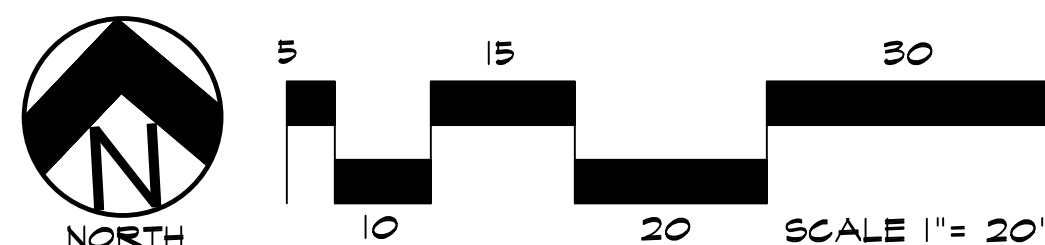
VERIFY LOCATION AND DEPTH OF ALL UNDERGROUND UTILITIES PRIOR TO START OF WORK. CALL 811 FOR UTILITY LOCATES. TREE TRUNK PLACEMENT SHALL BE 6" MINIMUM DISTANCE FROM ANY GAS OR ELECTRIC AND 10' FROM GAS MAINS RATED AT 150PSI. FOR SANITARY SEWER AND WATER MAINLINES TREES SHALL NOT BE LOCATED WITHIN EASEMENTS AND WITHIN 15' OF ANY MAINLINE. ANY CONFLICT BETWEEN TREE LOCATIONS AND UTILITIES SHOWN ON PLANS SHALL BE RESOLVED WITH GENERAL CONTRACTOR PRIOR TO PLANTING. ALL ELECTRICAL VAULTS AND TRANSFORMERS SHALL BE KEPT CLEAR FROM PLANT MATERIAL PER COLORADO SPRINGS UTILITIES GUIDELINES "LANDSCAPING AROUND ELECTRICAL EQUIPMENT". SEE COLORADO SPRINGS UTILITIES CONSTRUCTION STANDARD DRAWINGS 18-302 FOR SPECIFIC CLEARANCE REQUIREMENTS. ALL SHRUBS TO BE LOCATED 9" CLEAR OF ALL FIRE HYDRANTS AT MATURE SIZE.

## DOCUMENT NOTE

IRRESPECTIVE OF ANY OTHER TERM IN THIS DOCUMENT, LANDSCAPE ARCHITECT SHALL NOT CONTROL OR BE RESPONSIBLE FOR CONSTRUCTION MEANS, METHODS, TECHNIQUES, SCHEDULES, SEQUENCES OR PROCEDURES, OR FOR CONSTRUCTION SAFETY OR ANY OTHER RELATED PROGRAMS, OR FOR ANOTHER PARTIES' ERRORS OR OMISSIONS OR FOR ANOTHER PARTIES' FAILURE TO COMPLETE THEIR WORK OR SERVICES IN ACCORDANCE WITH LANDSCAPE ARCHITECT'S DOCUMENTS.



## ALTERNATE LANDSCAPE PLAN



**HIGHER GROUND DESIGNS, INC.**  
LANDSCAPE ARCHITECTURE, PLANNING & IRRIGATION DESIGN

5350 NORTH ACADEMY BLVD., STE. 207  
COLORADO SPRINGS, CO 80918  
Phone 719-477-1646  
Fax 719-586-1122



THESE DRAWINGS ARE THE PROPERTY OF HIGHER GROUND DESIGNS, INC. AND SHALL NOT BE USED FOR ANY OTHER PROJECT WITHOUT THE AUTHORIZATION BY HIGHER GROUND DESIGNS, INC. THESE DRAWINGS ARE FOR APPROVAL ONLY.

SMEKLER HCI  
7920 INDUSTRY ROAD  
EL PASO COUNTY

PREPARED FOR:  
HAMMERS CONSTRUCTION

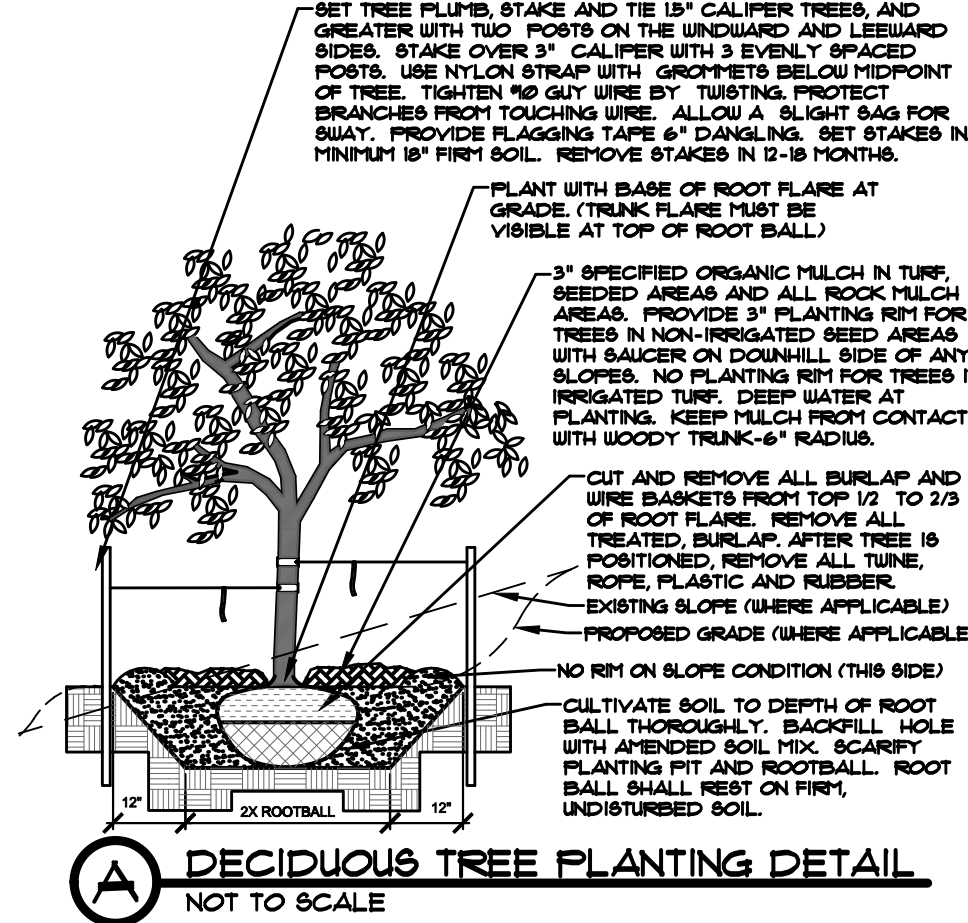
For Approval Only

JOB NUMBER	1083-22
REVISIONS	
6-24-22	PER IRRIGATION PLAN
8-15-22	PER COMMENTS
10-18-22	PER COMMENTS
ORIGINAL DATE	5-27-22
DRAWN BY	
DESCRIPTION	
FINAL LANDSCAPE PLAN	
SHEET NO.	L1.2

NOT FOR CONSTRUCTION



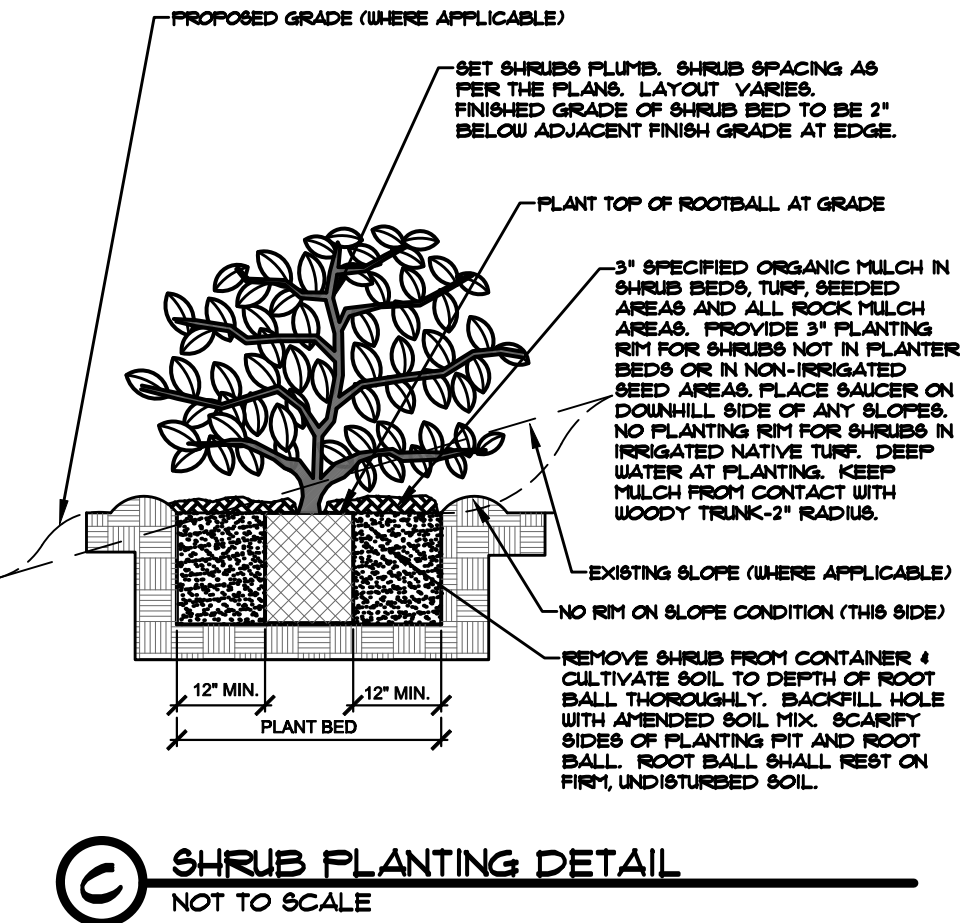
- NOTES:**
- MARK NORTH SIDE OF TREE AT NURSERY AND ALIGN TREE TO NORTH UPON PLANTING.
  - DO NOT REMOVE OR CUT LEADER.
  - PRUNE ONLY DEAD, BROKEN, CRACKING, OR HEAVY BRANCHES (OR NARROW CRACKS).
  - PRUNE ONLY DEAD OR BROKEN BRANCHES IMMEDIATELY PRIOR TO PLANTING.
  - PRUNE ONLY DEAD OR BROKEN BRANCHES IMMEDIATELY PRIOR TO PLANTING.
  - PRUNE ONLY DEAD OR BROKEN BRANCHES IMMEDIATELY PRIOR TO PLANTING.
  - DO NOT FERTILIZE FOR AT LEAST ONE GROWING SEASON.
  - APPLIED BACK FILL SHALL BE 10% SOIL FROM PLANTING PIT AND 30% ORGANIC MATERIAL.
  - FOR ROOT BIND AT BOTTOM OF BALL, SPLIT ROOT BALL VERTICALLY FROM BOTTOM HALFWAY TO TOP. SPREAD THE TWO HALVES OVER A MOUND OF SOIL IN PLANTING PIT.
  - FOR POT BOUND PLANTS ONLY, MAKE 4-5 VERTICAL CUTS IN ROOT BALL, 1" DEEP, PLANT IMMEDIATELY.
  - NO STRUCTURAL PRUNING OF TREE UNTIL AFTER ESTABLISHMENT PERIOD (2 GROWING SEASONS).
  - REMOVE ANY DOUBLE LEADER UNLESS OTHERWISE DIRECTED BY OWNER'S REPRESENTATIVE.
  - KEEP PLANTS MOIST AND SHADED UNTIL PLANTING.
  - AVOID FULL PLANTING IF POSSIBLE.
  - APPLIED BACK FILL SHALL BE 10% SOIL FROM PLANTING PIT AND 30% ORGANIC MATERIAL.
  - FOR ROOT BIND (CONTAINER PLANTS ONLY) AT BOTTOM OF BALL, SPLIT ROOT BALL VERTICALLY FROM BOTTOM HALFWAY TO TOP. SPREAD THE TWO HALVES OVER A MOUND OF SOIL IN PLANTING PIT.
  - FOR POT BOUND PLANTS ONLY, MAKE 4-5 VERTICAL CUTS IN ROOT BALL, 1" DEEP, PLANT IMMEDIATELY.
  - CONTAINER PLANTS ONLY.
  - COORDINATE WITH CITY FORESTRY FOR CURRENT INSECT & DISEASE RECOMMENDATIONS PRIOR TO PLANTING.



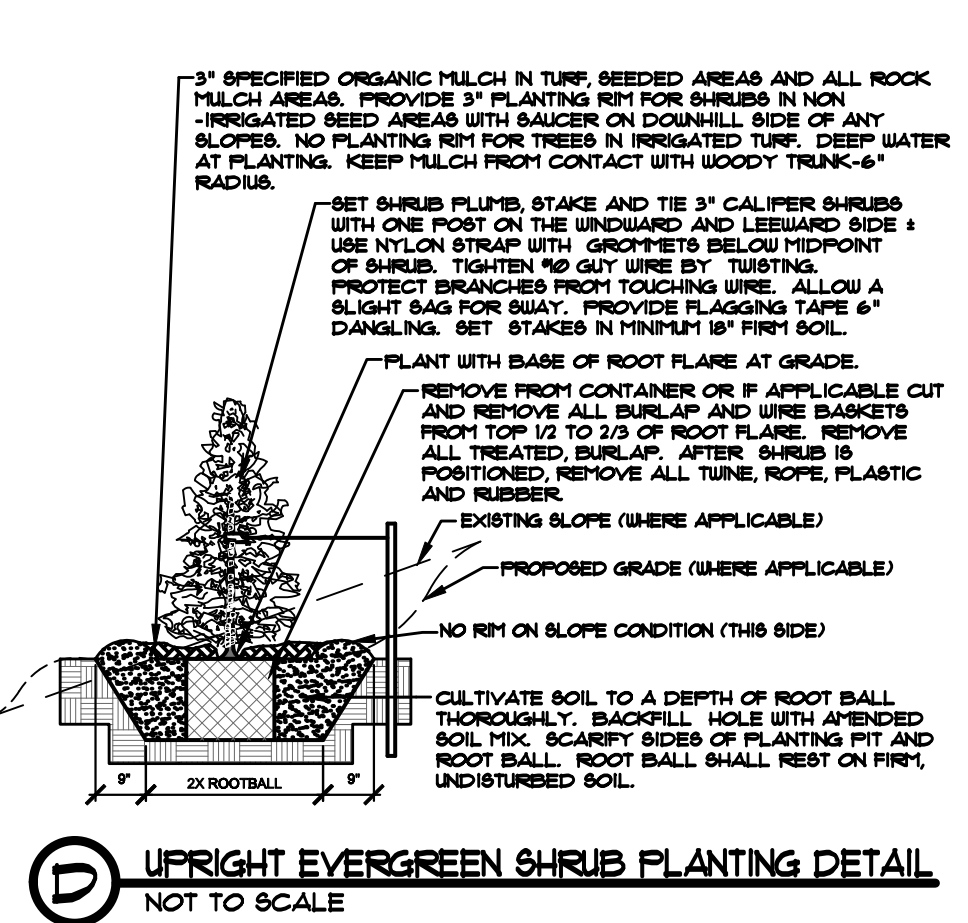
- NOTES:**
- MARK NORTH SIDE OF TREE AT NURSERY AND ALIGN TREE TO NORTH UPON PLANTING.
  - DO NOT REMOVE OR CUT LEADER.
  - PRUNE ONLY DEAD OR BROKEN BRANCHES IMMEDIATELY PRIOR TO PLANTING.
  - PRUNE ONLY DEAD OR BROKEN BRANCHES IMMEDIATELY PRIOR TO PLANTING.
  - PRUNE ONLY DEAD OR BROKEN BRANCHES IMMEDIATELY PRIOR TO PLANTING.
  - DO NOT FERTILIZE FOR AT LEAST ONE GROWING SEASON.
  - APPLIED BACK FILL SHALL BE 10% SOIL FROM PLANTING PIT AND 30% ORGANIC MATERIAL.
  - FOR ROOT BIND AT BOTTOM OF BALL, SPLIT ROOT BALL VERTICALLY FROM BOTTOM HALFWAY TO TOP. SPREAD THE TWO HALVES OVER A MOUND OF SOIL IN PLANTING PIT.
  - FOR POT BOUND PLANTS ONLY, MAKE 4-5 VERTICAL CUTS IN ROOT BALL, 1" DEEP, PLANT IMMEDIATELY.
  - NO STRUCTURAL PRUNING OF TREE UNTIL AFTER ESTABLISHMENT PERIOD (2 GROWING SEASONS).
  - REMOVE ANY DOUBLE LEADER UNLESS OTHERWISE DIRECTED BY OWNER'S REPRESENTATIVE.
  - KEEP PLANTS MOIST AND SHADED UNTIL PLANTING.
  - AVOID FULL PLANTING IF POSSIBLE.
  - APPLIED BACK FILL SHALL BE 10% SOIL FROM PLANTING PIT AND 30% ORGANIC MATERIAL.
  - FOR ROOT BIND (CONTAINER PLANTS ONLY) AT BOTTOM OF BALL, SPLIT ROOT BALL VERTICALLY FROM BOTTOM HALFWAY TO TOP. SPREAD THE TWO HALVES OVER A MOUND OF SOIL IN PLANTING PIT.
  - FOR POT BOUND PLANTS ONLY, MAKE 4-5 VERTICAL CUTS IN ROOT BALL, 1" DEEP, PLANT IMMEDIATELY.
  - CONTAINER PLANTS ONLY.
  - COORDINATE WITH CITY FORESTRY FOR CURRENT INSECT & DISEASE RECOMMENDATIONS PRIOR TO PLANTING.



- NOTES:**
- PRUNE ONLY DEAD OR BROKEN BRANCHES IMMEDIATELY PRIOR TO PLANTING.
  - KEEP PLANTS MOIST AND SHADED UNTIL PLANTING.
  - DO NOT FERTILIZE FOR AT LEAST ONE GROWING SEASON.
  - APPLIED BACK FILL SHALL BE 10% SOIL FROM PLANTING PIT AND 30% ORGANIC MATERIAL.
  - FOR ROOT BIND AT BOTTOM OF BALL, SPLIT ROOT BALL VERTICALLY FROM BOTTOM HALFWAY TO TOP. SPREAD THE TWO HALVES OVER A MOUND OF SOIL IN PLANTING PIT.
  - FOR POT BOUND PLANTS ONLY, MAKE 4-5 VERTICAL CUTS IN ROOT BALL, 1" DEEP, PLANT IMMEDIATELY.
  - NO STRUCTURAL PRUNING OF TREE UNTIL AFTER ESTABLISHMENT PERIOD (2 GROWING SEASONS).
  - REMOVE ANY DOUBLE LEADER UNLESS OTHERWISE DIRECTED BY OWNER'S REPRESENTATIVE.
  - KEEP PLANTS MOIST AND SHADED UNTIL PLANTING.
  - AVOID FULL PLANTING IF POSSIBLE.
  - APPLIED BACK FILL SHALL BE 10% SOIL FROM PLANTING PIT AND 30% ORGANIC MATERIAL.
  - FOR ROOT BIND (CONTAINER PLANTS ONLY) AT BOTTOM OF BALL, SPLIT ROOT BALL VERTICALLY FROM BOTTOM HALFWAY TO TOP. SPREAD THE TWO HALVES OVER A MOUND OF SOIL IN PLANTING PIT.
  - FOR POT BOUND PLANTS ONLY, MAKE 4-5 VERTICAL CUTS IN ROOT BALL, 1" DEEP, PLANT IMMEDIATELY.
  - CONTAINER PLANTS ONLY.
  - COORDINATE WITH CITY FORESTRY FOR CURRENT INSECT & DISEASE RECOMMENDATIONS PRIOR TO PLANTING.

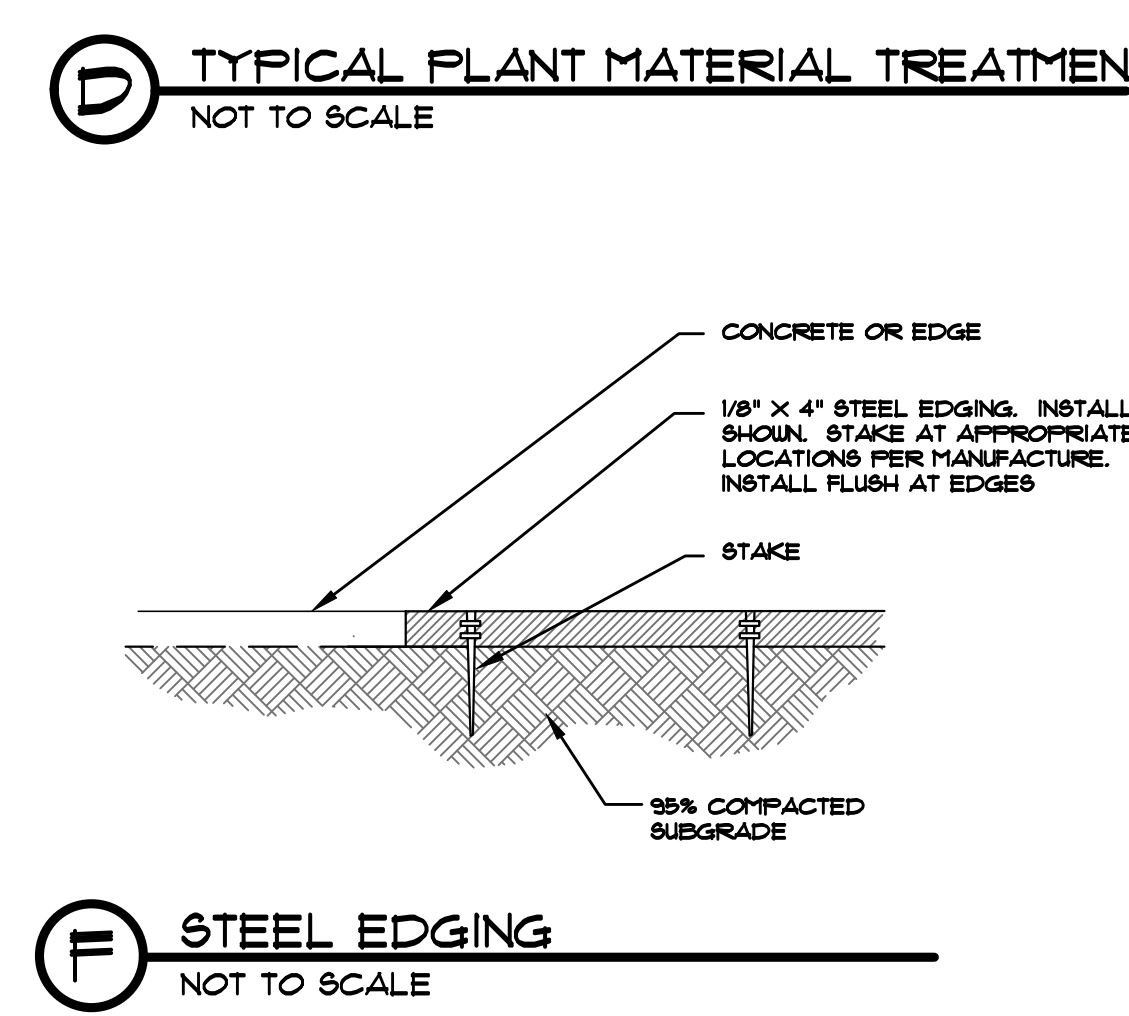
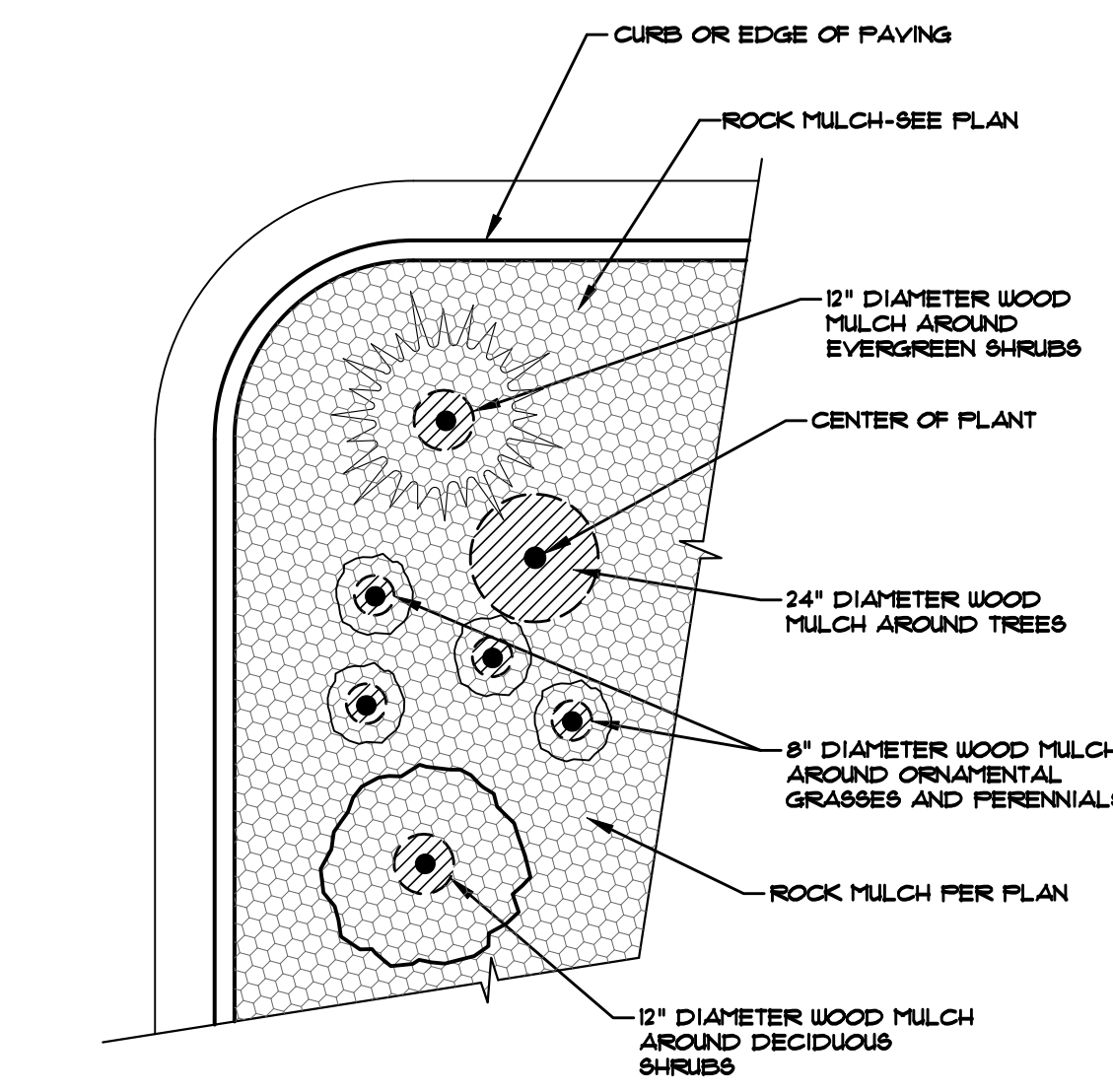


- NOTES:**
- DO NOT REMOVE OR CUT LEADER.
  - PRUNE ONLY DEAD OR BROKEN BRANCHES IMMEDIATELY PRIOR TO PLANTING.
  - REMOVE ANY DOUBLE LEADER UNLESS OTHERWISE DIRECTED BY OWNER'S REPRESENTATIVE.
  - AVOID FULL PLANTING IF POSSIBLE.
  - APPLIED BACK FILL SHALL BE 10% SOIL FROM PLANTING PIT AND 30% ORGANIC MATERIAL.
  - FOR ROOT BIND (CONTAINER PLANTS ONLY) AT BOTTOM OF BALL, SPLIT ROOT BALL VERTICALLY FROM BOTTOM HALFWAY TO TOP. SPREAD THE TWO HALVES OVER A MOUND OF SOIL IN PLANTING PIT.
  - FOR POT BOUND PLANTS ONLY, MAKE 4-5 VERTICAL CUTS IN ROOT BALL, 1" DEEP, PLANT IMMEDIATELY.
  - CONTAINER PLANTS ONLY.
  - COORDINATE WITH CITY FORESTRY FOR CURRENT INSECT & DISEASE RECOMMENDATIONS PRIOR TO PLANTING.



**NOTES:**

- CONTRACTOR TO INSTALL WOOD MULCH RINGS AROUND LANDSCAPING AS SHOWN BELOW FOR ALL TREES, SHRUBS, PERENNIALS AND ORNAMENTAL GRASSES. INSTALL IN ROCK MULCH AREAS. ROCK SHALL BE CLEAR FROM SHRUBS IN UNIFORM CIRCLE AND WOOD MULCH APPLIED AT 2" DEPTH. SEE CONSTRUCTION DETAILS FOR INSTALLATION PROCESS.
- REFER TO LANDSCAPE PLANS FOR ALL TREE, SHRUB AND ORNAMENTAL GRASS LOCATIONS.



**INSTALLATION NOTES**

REMOVE EXISTING TREES, DEBRIS AND WEEDS FROM SITE PRIOR TO CONSTRUCTION (AS SHOWN PER PLAN).

LANDSCAPE CONTRACTOR IS RESPONSIBLE FOR MAINTAINING THE SITE DURING CONSTRUCTION. WEEDS AND TRASH SHALL BE REMOVED DAILY AS REQUIRED.

EXISTING TOPSOIL TO BE STOCKPILED ON-SITE AND USED DURING CONSTRUCTION TO ESTABLISH GRADES WITHIN LANDSCAPE AREAS AS SHOWN PER PLAN.

CONTRACTOR SHALL REFER TO ASSOCIATED LANDSCAPE CONTRACTORS OF COLORADO HANDBOOK (ALCO), 2007 REVISED EDITION FOR ALL CONSTRUCTION FOR THIS SITE. CONTACT OWNER/LANDSCAPE ARCHITECT FOR QUESTIONS.

QUANTITIES SHOWN IN PLANT SCHEDULE ARE FOR CONVENIENCE ONLY. CONTRACTOR IS RESPONSIBLE FOR INSTALLING ALL PLANT MATERIAL PER PLAN.

LANDSCAPE ARCHITECT SHALL HAVE OPPORTUNITY TO INSPECT AND APPROVE ALL TREES AND ALL 1-15 GALLON MATERIAL AT JOB SITE PRIOR TO PLANTING, INCLUDING PLACEMENT INSPECTION.

STEEL EDGING TO BE GREEN PRO-STEEL (1/8" x 4" x 10') WITH STAKES OR APPROVED EQUAL. EDGING TO BE EXPOSED 1/2" MAXIMUM ABOVE FINISHED GRADES. INSTALL PER MANUFACTURE RECOMMENDATIONS. SEE PLAN FOR EDGING LOCATIONS.

ALL ROCK COVER AREAS ONLY TO BE PREPARED WITH 3 OZ PROFESSIONAL GRADE POLYSPIN WEED BARRIER WITH STAPLES AT 5" O.C. FABRIC SEAMS TO BE OVERLAPPED 6" MIN. AND SECURED WITH STAPLES.

GROUND COVER SHALL BE CONTINUOUS UNDER ALL SHRUBS THROUGHOUT PROJECT SITE. REFER TO PLANTING DETAILS.

TREES AND SHRUBS TO RECEIVE ORGANIC MULCH PER DETAILS. INCLUDING ROCK AREAS-SEE DETAILS. UNLESS OTHERWISE SPECIFIED. ORGANIC MULCH TO BE CASCADE CEDAR WITH NO LANDSCAPE FABRIC 4" DEPTH.

DO NOT PLANT SHRUBS OR TREES OF INCOMPATIBLE WATER REQUIREMENTS IMMEDIATELY ADJACENT (MINIMUM 5') TO ONE ANOTHER.

PLANT BACKFILL SHALL BE 70% NATIVE ON-SITE SOIL, AND 30% BREW-GRO BIOCOMP CLASS 1 (OR CITY APPROVED EQUAL).

A REPRESENTATIVE SAMPLE OF THE BOTANICAL NAME TAGS, FURNISHED BY THE NURSERY STOCK PROVIDER SHALL REMAIN ATTACHED TO THE PLANTS UNTIL FINAL INSPECTION.

LANDSCAPE CONTRACTOR SHALL NOTIFY LANDSCAPE ARCHITECT IF STORM DRAINAGE FROM ADJACENT LANDSCAPE AREAS OR BUILDING DOWNSPOUTS WILL ADVERSELY AFFECT LANDSCAPED AREAS PER THE PLAN.

PRIOR TO INSTALLING PLANTS OR GROUND COVER BROADCAST (PLANT SAFE) PREEN WEED PRE-EMERGENT, OR APPROVED EQUAL, IN ALL PLANTING AREAS PER MANUFACTURE RECOMMENDATIONS. WWW.PREEN.COM

**FIRE SIGNAGE NOTE**

ANY VEGETATION THAT MAY GROW TO OR IMMEDIATELY OBSTRUCT ANY FIRE LANE SIGNAGE WILL BE PLANTED IN SUCH A WAY TO PREVENT ANY FUTURE OBSTRUCTION OF SUCH SIGNAGE.

**GRADING AND DRAINAGE NOTE**

ALL GRADES SHOULD SLOPE AWAY FROM ALL BUILDING FOUNDATION. PRIOR TO, OR DURING CONSTRUCTION IF DRAINAGE PROBLEMS ARE IDENTIFIED CONTACT LANDSCAPE ARCHITECT AND CEASE WORK UNTIL A SOLUTION IS AGREED TO BY ALL PARTIES. HGD, INC. PREPARED THIS LANDSCAPE PLAN BASED ON CIVIL PLANS BY OTHERS AND IS NOT RESPONSIBLE FOR ANY DAMAGE TO BUILDING AND/OR SITE DUE TO IMPROPER GRADING AND/OR DRAINAGE.

**PLANTING AREA SOIL PREP NOTES**

FOR ALL PLANTING AREAS SOIL PREPARATION FOR UNDISTURBED OR COMPACTED AREAS:

A. RIP EXISTING SOIL TO A DEPTH OF NINE (9) INCHES MINIMUM IN ONE DIRECTION USING AN AGRICULTURAL RIPPER WITH TINES SPACED NO FURTHER THAN EIGHTEEN (18) INCHES APART OR TILL TO 6" DEPTH. AREAS ADJACENT TO WALKS, STRUCTURES, CURBS, ETC., WHERE THE USE OF LARGE MECHANICAL EQUIPMENT IS DIFFICULT SHALL BE WORKED WITH SMALLER EQUIPMENT OR BY HAND.

B. REMOVE ALL RUBBLE, STONES AND EXTRANEOUS MATERIAL OVER TWO (2) INCHES IN DIAMETER FROM THE SITE.

C. FOR TREE LOCATIONS REMOVE AND REPLACE EXISTING SOIL TO 36" DEPTH. IF CLAY OR SAND REPLACE WITH GRADE B TOPSOIL.

D. PLANTING AREA SOIL SHALL BE AMENDED BREW-GRO BIOCOMP CLASS 1 (OR CITY APPROVED EQUAL) AT 2 C.Y./1000 SF TILLED INTO TOP 4-6" OF SOIL PRIOR TO FINAL GRADE AND PLANTING.

Chapter 5  
Native Vegetation Requirements and Guidelines

Table 5-2. El Paso County All-Purpose Low Grow Mix for Upland and Transition Areas

Common Name	Scientific Name	Growth Season / Form	% of Mix	Pounds PLS		
				Irrigated broadcast	Non-irrigated broadcast	Non-irrigated drilled
Buffalograss	<i>Buchloe dactyloides</i>	Warm, sod	25	9.6	4.8	2.4
Gramma, blue	<i>Bouteloua gracilis</i>	Warm, bunch	20	10.8	5.4	2.7
Gramma, sideoats	<i>Bouteloua curtipendula</i>	Warm, bunch	29	5.6	2.8	1.4
Green needlegrass	<i>Nassella viridula</i>	Cool, bunch	5	3.2	1.6	0.8
Wheatgrass, western	<i>Pascopyrum smithii</i>	Cool, sod	20	12	6	3
Dropseed, sand	<i>Sporobolus cryptandrus</i>	Warm, bunch	1	0.8	0.4	0.2
Seed rate (lbs PLS/acre)				42	21	10.3

**UTILITIES NOTE**

VERIFY LOCATION AND DEPTH OF ALL UNDERGROUND UTILITIES PRIOR TO START OF WORK. CALL 811 FOR UTILITY LOCATES. TREE TRUNK PLACEMENT SHALL BE 6" MINIMUM DISTANCE FROM ANY GAS OR ELECTRIC AND 10" FROM GAS MAINS RATED AT 150PSI. FOR SANITARY SEWER AND WATER MAINLINES TREES SHALL NOT BE LOCATED WITHIN EASEMENTS AND WITHIN 15' OF ANY MAINLINE. ANY CONFLICT BETWEEN TREE LOCATIONS AND UTILITIES SHOWN ON PLANS SHALL BE RESOLVED WITH GENERAL CONTRACTOR PRIOR TO PLANTING. ALL ELECTRICAL VAULTS AND TRANSFORMERS SHALL BE KEPT CLEAR FROM PLANT MATERIAL PER COLORADO SPRINGS UTILITIES GUIDELINES "LANDSCAPING AROUND ELECTRICAL EQUIPMENT". SEE COLORADO SPRINGS UTILITIES CONSTRUCTION STANDARD DRAWINGS 18-302 FOR SPECIFIC CLEARANCE REQUIREMENTS. ALL SHRUBS TO BE LOCATED 3' CLEAR OF ALL FIRE HYDRANTS AT MATURE SIZE.

**SEEDING NOTES**

SEED MIX 'A': NATIVE SEED TO BE EL PASO COUNTY CONSERVATION DISTRICT LOW GROW SEED MIX. SOIL PREPARATION AND SEEDING METHODS SHALL FOLLOW ALL GUIDELINES PER CITY OF COLORADO SPRINGS STORMWATER ENTERPRISE CONSTRUCTION MANUAL, SECTION 5, DATED DECEMBER 2020. REFER TO TABLE 5-2 FOR SEED MIX. SEED SHALL BE HYDRO-SEEDING.

SOIL SHALL BE AMENDED BREW-GRO BIOCOMP CLASS 1 (OR CITY APPROVED EQUAL) AT 2 C.Y./1000 SF TILLED INTO TOP 4-6" OF SOIL PRIOR TO SEEDING.

DEPENDENT ON WEATHER, SEED SHALL BE INSTALLED WITHIN THE FOLLOWING TIME FRAMES: SEPTEMBER 1 UNTIL CONSISTENT GROUND FREEZE FOR SPRING ESTABLISHMENT (DORMANT SEEDING); SPRING THRU UNTIL JUNE 1 FOR SPRING AND SUMMER ESTABLISHMENT (ACTIVE SEEDING).

FOR HYDRO-SEEDING ALL SEEDED AREAS SHALL RECEIVE NOT LESS THAN 1 TON PER ACRE (2000 LBS) OF VIRGIN WOOD CELLULOSE HYDRO-MULCH AND 100 LBS PER ACRE OF ORGANIC TACKIFIER.

SEEDED LANDSCAPE AREAS SHALL HAVE NO BARE AREAS LARGER THAN SIX (6) SQUARE INCHES 15 DAYS AFTER GERMINATION.

DRILL SEEDING: SEEDING EQUIPMENT USED FOR APPLYING SEED MIXTURES SHALL BE DESIGNED, MODIFIED OR EQUIPPED TO REGULATE THE APPLICATION RATE AND PLANTING DEPTH OF THE SEED MIXTURE. SEED SHALL BE UNIFORMLY DISTRIBUTED IN THE DRILL HOPPER DURING THE DRILLING OPERATION. A RANGELAND DRILL CAPABLE OF MIXING DIFFERENT SIZES AND WEIGHTS OF SEEDS SHALL BE USED. THE DRILL SHALL BE EQUIPPED WITH DOUBLE DISK FURROW OPENERS, DEPTH BANDS, PRESS WHEELS OR DRAG CHAINS.

THE SEED SHALL BE DRILLED APPROXIMATELY 1/2" INCH BELOW THE SOIL SURFACE. HALF OF THE TOTAL RATE OF SEED APPLICATION SHALL BE DRILLED IN 1 DIRECTION, WITH THE REMAINDER OF THE SEED RATE DRILLED AT 90 DEGREES FROM THE FIRST DIRECTION DO NOT DRILL OR SOW SEED DURING HIGH WINDS OR WHEN THE GROUND IS FROZEN OR OTHERWISE UNABLE TO BE WORKED.

ALL SEEDED AREAS LESS THAN 3:1 SHALL RECEIVE NO LESS THAN 2 TONS PER ACRE (400 LBS) OF CERTIFIED WEED FREE STRAW MULCH. STRAW MULCH SHALL BE APPLIED IN A UNIFORM MANNER BY MULCH SPREADER OR BY HAND. STRAW MULCH SHALL BE CRIMPED OR ANCHORED INTO THE SEEDBED IMMEDIATELY FOLLOWING SPREADING BY USING A MULCH TILLER (CRIMPER). MULCH TILLERS SHALL HAVE ROUND, NOTCHED-BLADES SPACED 8-INCHES APART (MIN.) AND SHALL HAVE SUFFICIENT WEIGHT TO FORCE THE VEGETATIVE MULCH A MINIMUM DEPTH OF 3-INCHES INTO THE SOIL. ALL MULCH TILLING SHALL BE DONE PERPENDICULAR TO THE FLOW-LINE OF THE SLOPE (ALONG CONTOURS). HAND CRIMPING SHALL BE PERFORMED ON AREAS WHERE MECHANICAL METHODS CANNOT BE USED.

MULCH SHALL BE APPLIED TO SEEDED AREAS (INCLUDING DAMP GROUND) WITHIN 24 HOURS FOLLOWING THE COMPLETION OF SEEDING OPERATIONS FOR THE AREA. MULCHING SHALL NOT BE PERFORMED DURING ADVERSE WEATHER CONDITIONS OR WHEN WIND PREVENTS UNIFORM DISTRIBUTION. APPLICATION SHALL BE IN A MANNER TO NOT SERIOUSLY DISTURB THE SEEDBED SURFACE.

**HIGHER GROUND DESIGNS, INC.**  
LANDSCAPE ARCHITECTURE, PLANNING & IRRIGATION DESIGN  
5350 NORTH ACADEMY BLVD., STE. 207  
COLORADO SPRINGS, CO 80918  
Phone 719-477-1646  
Fax 719-586-1122



THESE DRAWINGS ARE THE PROPERTY OF HIGHER GROUND DESIGNS, INC. AND SHALL NOT BE USED FOR ANY OTHER PROJECT WITHOUT THE WRITTEN AUTHORIZATION BY HIGHER GROUND DESIGNS, INC. THESE DRAWINGS ARE FOR APPROVAL ONLY.

**SMELKER HCI**  
7920 INDUSTRY ROAD  
EL PASO COUNTY

PREPARED FOR:  
HAMMERS CONSTRUCTION

For Approval Only

**NOT FOR CONSTRUCTION**

JOB NUMBER	1083-22
REVISIONS	
6-24-22	PER IRRIGATION PLAN
8-15-22	PER COMMENTS
10-18-22	PER COMMENTS
ORIGINAL DATE	5-27-22
DRAWN BY	
DESCRIPTION	
FINAL LANDSCAPE PLAN NOTES	
SHEET NO.	L1.3