



EL PASO COUNTY PLANNING & COMMUNITY DEVELOPMENT
SIGN APPLICATION

SC-17-068

DATE:

Business

Name: Starbucks #51410
Address: 209 Culeneagle Crk view.
C/S, CO 80921

Zone CS

Legal Description: Lot
(2) Academy
gateway Sub
Fill No. 1

Type of Sign

Illuminated: yes
Non-Illuminated:
Valuation: \$20,000

Storefront Length &/or
Width: North's South Elevations 70' long
East & West Elevation 30' long
Proposed Sign Sq. Ft. _____

Existing Sign Sq. Ft. _____

Total Sign Sq. Ft. _____

Contractor Information

Name: Freeman Signs
Address: 3883 Monaco Pkwy.
Denver, CO 80204
Phone: 303-781-0100
Type of License: Contractors
Contractor ID#: 18256

Vicinity Map

Tax Schedule # 6206306002

Please show major intersections.



Sign Plan

(Please indicate dimensions and sign copy)

Elevation Drawing

Indicate storefront length & placement of
sign.

Approved

By: Nina Ruiz
Date: 10/12/2017

El Paso County Planning & Community Development



For Planning & Community Development Use Only

Approved Date: _____ Resubmittal? Yes _____ No _____

Denied Date: _____

Comments:

1.5 sf/frontage allowed. Directional
signage not part of the calculation.

Fee of \$262.00 must accompany this Application. Additional signs at time of first Application are \$125.00. Make checks payable to El Paso County.

SIGN SUPPORT WORKSHEET

Client STARBUCKS 52834 DENVER, CO	Project D/F ILLUM. ID. MONUMENT SIGN @ 8' O. A. HT.
--	--

QID 17-38045

DESIGN DATA:
 40 LBS./SQ. FT. WINDLOAD
 500 LBS./SQ. FT. ACT. SOIL BEARING VALUE
 140 LBS./CU. FT. CONCRETE WEIGHT
 STEEL @ 35 KSI OR GREATER

31.84' x 3' DEEP BLOCK FTG. (2)
 2 CU. YDS. CONCRETE TOTAL
 1.83 FACTOR OF SAFETY

4" DIA. STD. PIPE
 x 11'-6" LG. (2)
 = 3.03 IN³ > 2.75 IN³

HILTONDISPLAYS
 125 HILLside Dr.
 Glenview, IL 60025
 847-232-2201

5/16" = 1' - 0" 9-5-17 Douglas M. Wilding

Steel / Concrete		Sub	Excavate
		Sub	Haul Fill
		INSTALLATION	Travel:
		INSTALLATION	Excavate / Set Steel
		INSTALLATION	Set Sign, PC, etc.
LABOR	Cut steel:	INSTALLATION	Set-Up EMC:
	Weld etc.:	INSTALLATION	Travel:
	Prime & Paint:	INSTALLATION	
Material Total:			Labor Total:

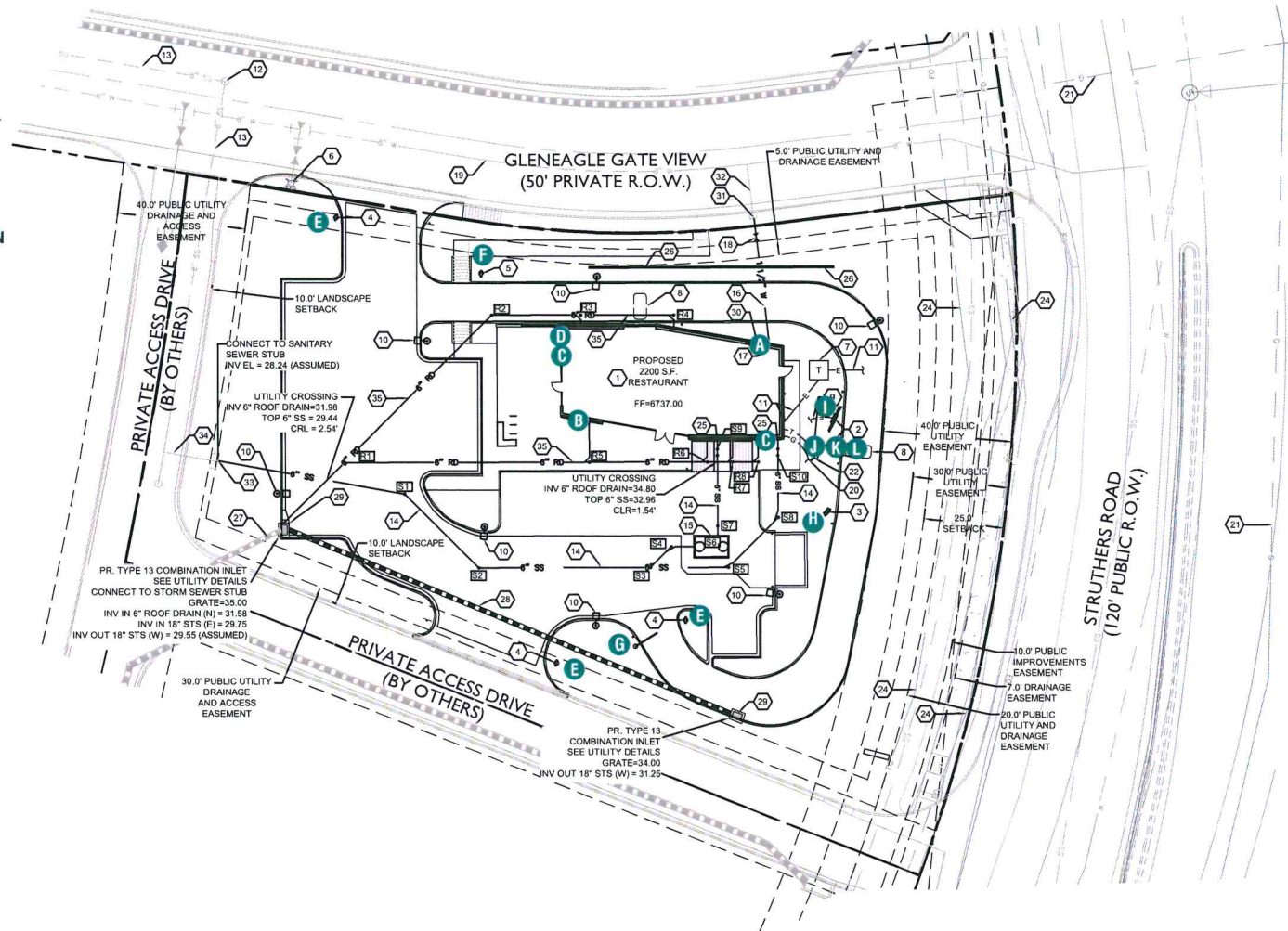
STARBUCKS #51410
Northgate Blvd & Struthers
209 Gleneagle Gate View
Colorado Springs, CO 80921



17-38415

SITE PLAN

- A** 60" SIREN WALL SIGN
- B** 71" SIREN WALL SIGN
- C** 48" DT WALL SIGN
- D** 18" CHANNEL LETTERS
- E** 46" DT DIRECTIONAL
- F** 46" TY/EO DIRECTIONAL
- G** CLEARANCE BAR
- H** PRE-MENU BOARD
- I** MENU BOARD
- J** DIGITAL ORDER SCREEN
- K** DIGITAL CONTROL BOX
- L** CANOPY



QID 17-38415

JOB NAME

Starbucks #51410

LOCATION

209 Gleneagle Gate View
Colorado Springs, CO 80921

CUSTOMER CONTACT

SALESMAN / PM

DESIGNER

DWG. DATE

08-18-17

REV. DATE / REVISION

08-23-17 CL / Notes & DT
08-24-17 CW / changes

SCALE

As Noted

FILE

2017/Starbucks/Colorado
Springs CO/17-38415/SB
Colorado Springs.cdr

DESIGN SPECIFICATIONS ACCEPTED BY:

EST. CLIENT:

SLS/PM: LANDLORD:

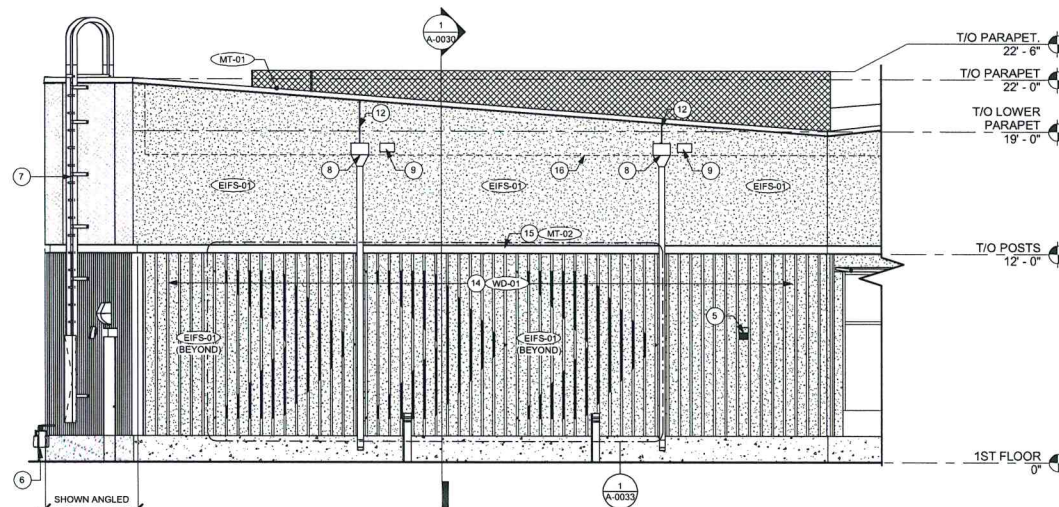
THE INTENT OF THIS DRAWING IS TO SHOW A CONCEPTUAL REPRESENTATION OF THE PROPOSED SIGNAGE. DUE TO VARIATIONS IN PRINTING DEVICES AND SUBSTRATES, THE FINISHED PRODUCT MAY DIFFER SLIGHTLY FROM DRAWING.

Underwriters
Laboratories Inc.

DRY
DAMP
WET

ELEVATION

- A** 60" SIREN WALL SIGN
- B** 71" SIREN WALL SIGN
- C** 48" DT WALL SIGN
- D** 18" CHANNEL LETTERS
- E** 46" DT DIRECTIONAL
- F** 46" TY/EO DIRECTIONAL
- G** CLEARANCE BAR
- H** PRE-MENU BOARD
- I** MENU BOARD
- J** DIGITAL ORDER SCREEN
- K** DIGITAL CONTROL BOX
- L** CANOPY



② DRIVE-THRU ELEVATION

NO SIGNAGE THIS ELEVATION

COLOR LEGEND

PMS/Paint	Vinyl
PMS 3425 C	3M 3630-76
RAL 7021M	3M 3630-22
PMS WHITE	3M 3630-20/ 7725-10 TRANSLUCENT OPAQUE
PMS 369 C	NA
REFL. WHITE	3M 680-10

QID 17-38415

JOB NAME

Starbucks #51410

LOCATION

209 Gleneagle Gate View
Colorado Springs, CO 80921

CUSTOMER CONTACT

SALESMAN / PM

DESIGNER

DWG. DATE

08-18-17

REV. DATE / REVISION

08-23-17 CL / Notes & DT
08-24-17 CW / changes

SCALE

As Noted

FILE

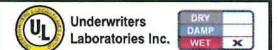
2017/Starbucks/Colorado
Springs CO/17-38415/SB
Colorado Springs.cdr

DESIGN SPECIFICATIONS ACCEPTED BY:

EST: CLIENT:

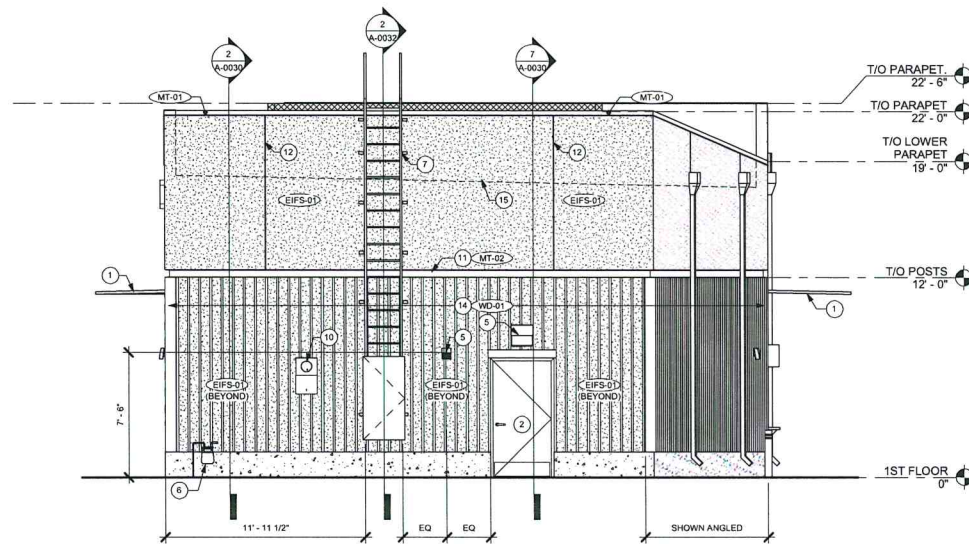
SLS/PM: LANDLORD:

THE INTENT OF THIS DRAWING IS TO SHOW A CONCEPTUAL REPRESENTATION OF THE PROPOSED SIGNAGE. DUE TO VARIATIONS IN PRINTING DEVICES AND SUBSTRATES, THE FINISHED PRODUCT MAY DIFFER SLIGHTLY FROM DRAWING.



ELEVATION

- A 60" SIREN WALL SIGN
- B 71" SIREN WALL SIGN
- C 48" DT WALL SIGN
- D 18" CHANNEL LETTERS
- E 46" DT DIRECTIONAL
- F 46" TY/EO DIRECTIONAL
- G CLEARANCE BAR
- H PRE-MENU BOARD
- I MENU BOARD
- J DIGITAL ORDER SCREEN
- K DIGITAL CONTROL BOX
- L CANOPY



① ELEVATION @ REAR

NO SIGNAGE THIS ELEVATION

COLOR LEGEND

PMS/Paint	Vinyl
PMS 3425 C	3M 3630-76
RAL 7021M	3M 3630-22
PMS WHITE	3M 3630-20/ 7725-10 TRANSLUCENT OPAQUE
PMS 369 C	NA
REFL. WHITE	3M 680-10

QID 17-38415

JOB NAME

Starbucks #51410

LOCATION

209 Gleneagle Gate View
Colorado Springs, CO 80921

CUSTOMER CONTACT

SALESMAN / PM

DESIGNER

DWG. DATE

08-18-17

REV. DATE / REVISION

08-23-17 CL / Notes & DT
08-24-17 CW / changes

SCALE

As Noted

FILE

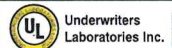
2017/Starbucks/Colorado
Springs CO/17-38415/SB
Colorado Springs.cdr

DESIGN SPECIFICATIONS ACCEPTED BY:

EST: CLIENT:

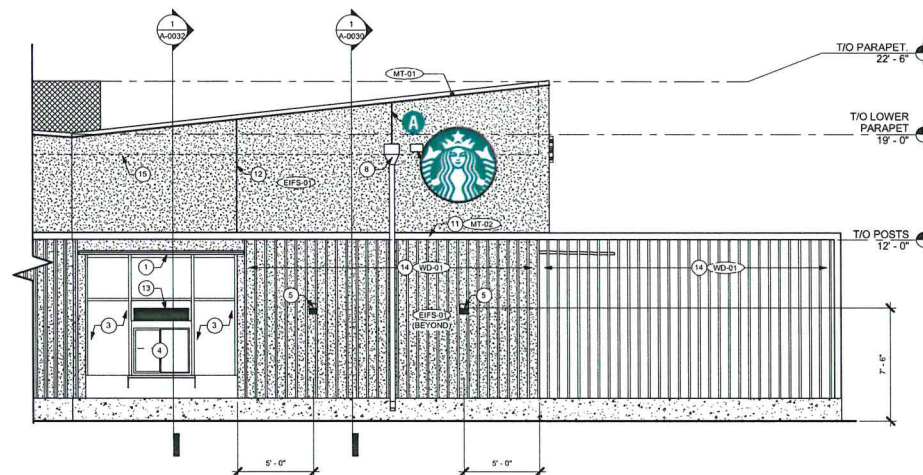
SLS PM: LANDLORD:

THE INTENT OF THIS DRAWING IS TO SHOW A CONCEPTUAL REPRESENTATION OF THE PROPOSED SIGNAGE. DUE TO VARIATIONS IN PRINTING DEVICES AND SUBSTRATES, THE FINISHED PRODUCT MAY DIFFER SLIGHTLY FROM DRAWING.



ELEVATION

- A 60" SIREN WALL SIGN
- B 71" SIREN WALL SIGN
- C 48" DT WALL SIGN
- D 18" CHANNEL LETTERS
- E 46" DT DIRECTIONAL
- F 46" TY/EO DIRECTIONAL
- G CLEARANCE BAR
- H PRE-MENU BOARD
- I MENU BOARD
- J DIGITAL ORDER SCREEN
- K DIGITAL CONTROL BOX
- L CANOPY



③ ELEVATION @ DT WINDOW
Scale: 3/16" = 1'

COLOR LEGEND			
PMS/Paint		Vinyl	
PMS 3425 C		3M 3630-76	
RAL 7021M		3M 3630-22	
PMS WHITE		3M 3630-20/ 7725-10	TRANSLUCENT OPAQUE
PMS 369 C		NA	
REFL. WHITE		3M 680-10	

QID 17-38415

JOB NAME

Starbucks #51410

LOCATION

209 Gleneagle Gate View
Colorado Springs, CO 80921

CUSTOMER CONTACT

SALESMAN / PM

DESIGNER

DWG. DATE

08-18-17

REV. DATE / REVISION

08-23-17 CL / Notes & DT
08-24-17 CW / changes

SCALE

As Noted

FILE

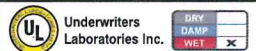
2017/Starbucks/Colorado
Springs CO/17-38415/SB
Colorado Springs.cdr

DESIGN SPECIFICATIONS ACCEPTED BY:

EST: CLIENT:

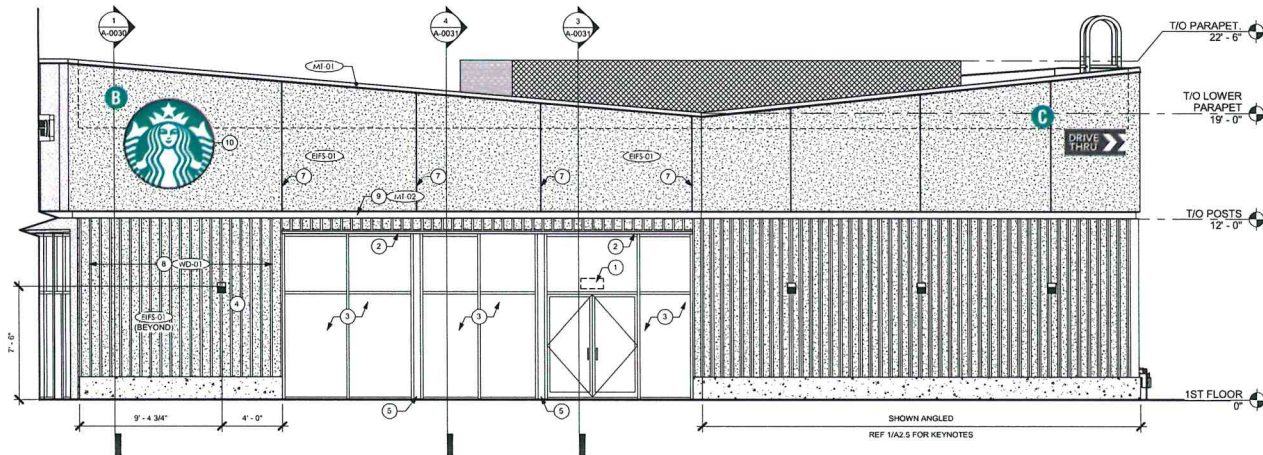
SLS/PM: LANDLORD:

THE INTENT OF THIS DRAWING IS TO SHOW A CONCEPTUAL REPRESENTATION OF THE PROPOSED SIGNAGE. DUE TO VARIATIONS IN PRINTING DEVICES AND SUBSTRATES, THE FINISHED PRODUCT MAY DIFFER SLIGHTLY FROM DRAWING.



ELEVATION

- A** 60" SIREN WALL SIGN
- B** 71" SIREN WALL SIGN
- C** 48" DT WALL SIGN
- D** 18" CHANNEL LETTERS
- E** 46" DT DIRECTIONAL
- F** 46" TY/EO DIRECTIONAL
- G** CLEARANCE BAR
- H** PRE-MENU BOARD
- I** MENU BOARD
- J** DIGITAL ORDER SCREEN
- K** DIGITAL CONTROL BOX
- L** CANOPY



① ELEVATION @ STOREFRONT
Scale: 1/8" = 1'

COLOR LEGEND		
PMS/Paint	VINYL	
PMS 3425 C	3M 3630-76	
RAL 7021M	3M 3630-22	
PMS WHITE	3M 3630-20/ 7725-10	TRANSLUCENT OPALQUE
PMS 369 C	NA	
REFL. WHITE	3M 680-10	

QID 17-38415

JOB NAME

Starbucks #51410

LOCATION

209 Gleneagle Gate View
Colorado Springs, CO 80921

CUSTOMER CONTACT

SALESMAN / PM

DESIGNER

DWG. DATE

08-18-17

REV. DATE / REVISION

08-23-17 CL / Notes & DT
08-24-17 CW / changes

SCALE

As Noted

FILE

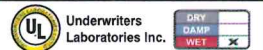
2017/Starbucks/Colorado
Springs CO/17-38415/SB
Colorado Springs.cdr

DESIGN SPECIFICATIONS ACCEPTED BY:

EST: CLIENT:

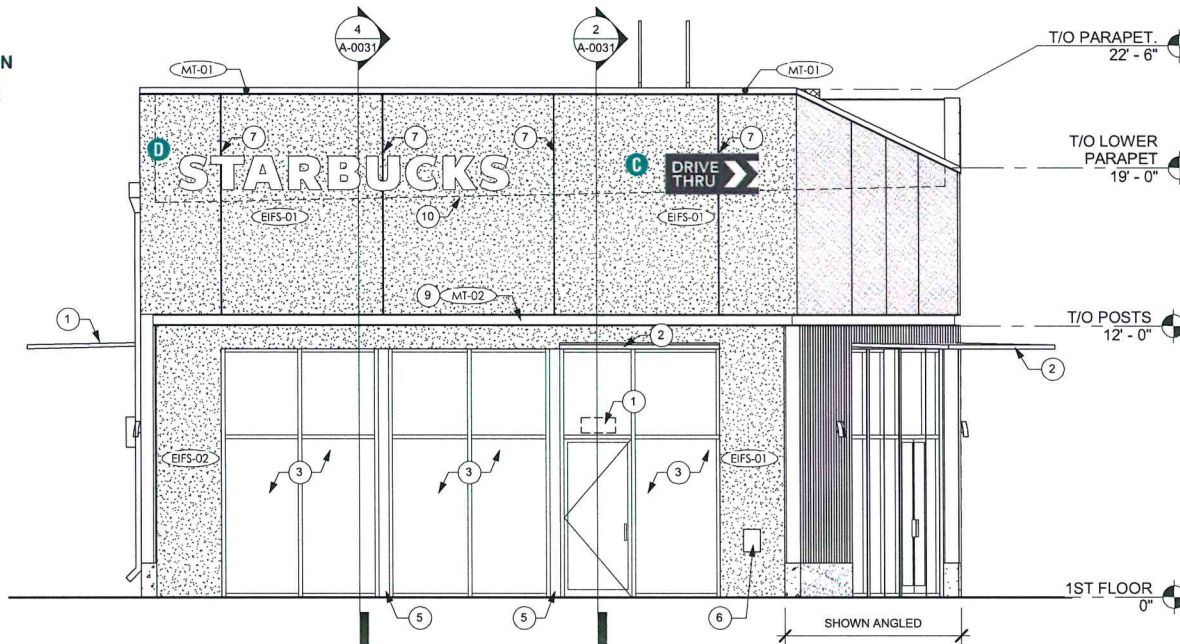
SLS/PM: LANDLORD:

THE INTENT OF THIS DRAWING IS TO SHOW A CONCEPTUAL REPRESENTATION OF THE PROPOSED SIGNAGE. DUE TO VARIATIONS IN PRINTING DEVICES AND SUBSTRATES, THE FINISHED PRODUCT MAY DIFFER SLIGHTLY FROM DRAWING.



ELEVATION

- A** 60" SIREN WALL SIGN
- B** 71" SIREN WALL SIGN
- C** 48" DT WALL SIGN
- D** 18" CHANNEL LETTERS
- E** 46" DT DIRECTIONAL
- F** 46" TY/EO DIRECTIONAL
- G** CLEARANCE BAR
- H** PRE-MENU BOARD
- I** MENU BOARD
- J** DIGITAL ORDER SCREEN
- K** DIGITAL CONTROL BOX
- L** CANOPY



ELEVATION @ ENTRY

Scale: 3/16" = 1'

COLOR LEGEND	
PMS/Paint	VINYL
PMS 3425 C	3M 3630-76
RAL 7021M	3M 3630-22
PMS WHITE	3M 3630-20/ 7725-10 TRANSLUCENT OPAQUE
PMS 369 C	NA
REFL. WHITE	3M 680-10

QID 17-38415

JOB NAME

Starbucks #51410

LOCATION

209 Gleneagle Gate View
Colorado Springs, CO 80921

CUSTOMER CONTACT

SALESMAN / PM

DESIGNER

DWG. DATE

08-18-17

REV. DATE / REVISION

08-23-17 CL / Notes & DT

08-24-17 CW / changes

SCALE

As Noted

FILE

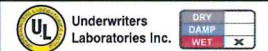
2017/Starbucks/Colorado
Springs CO/17-38415/SB
Colorado Springs.cdr

DESIGN SPECIFICATIONS ACCEPTED BY:

EST: CLIENT:

SLS/PM: LANDLORD:

THE INTENT OF THIS DRAWING IS TO SHOW A CONCEPTUAL
REPRESENTATION OF THE PROPOSED SIGNAGE. DUE TO
VARIATIONS IN PRINTING DEVICES AND SUBSTRATES, THE
FINISHED PRODUCT MAY DIFFER SLIGHTLY FROM DRAWING.



WALL SECTION

60" ILLUMINATED SIREN

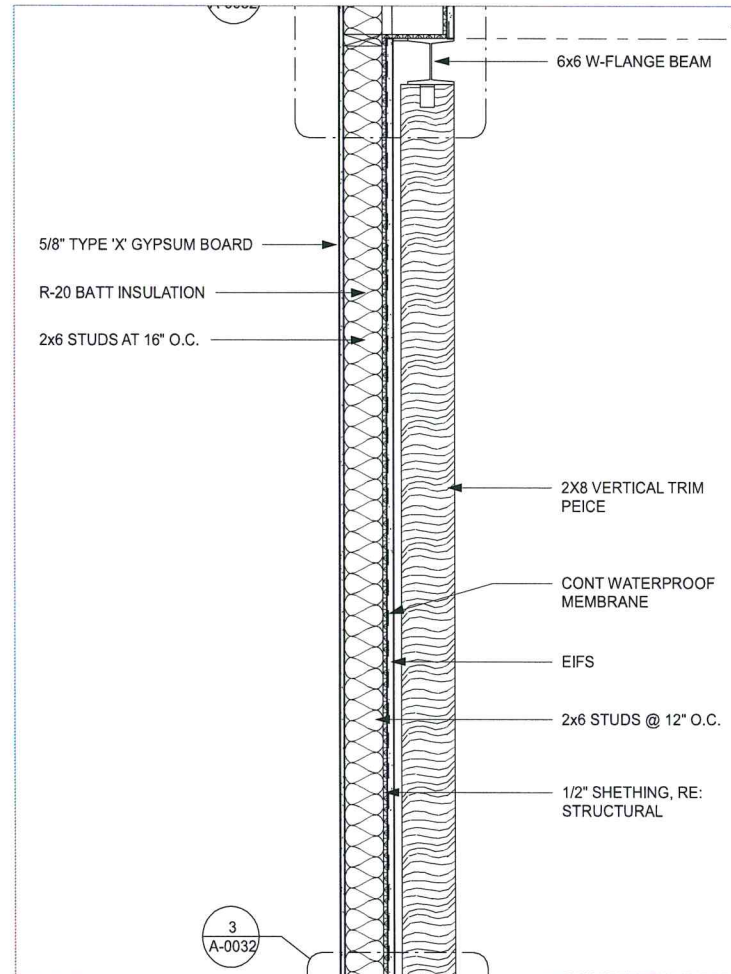
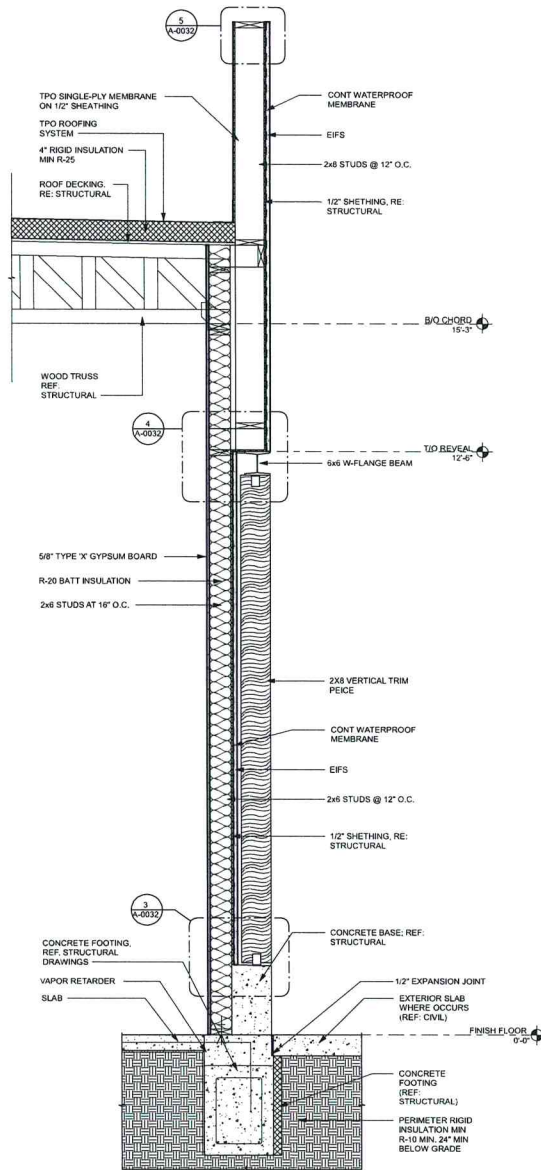


71" ILLUMINATED SIREN



COLOR LEGEND

PMS/PANT	VBKYL
PMS 3425 C	3M 3630-76
RAL 7021M	3M 3630-22
PMS WHITE	3M 3630-20/ 7725-10 TRANSLUCENT OPAQUE
PMS 369 C	NA
REFL. WHITE	3M 680-10



QID 17-38415

JOB NAME

Starbucks #51410

LOCATION

209 Gleneagle Gate View
Colorado Springs, CO 80921

CUSTOMER CONTACT

SALESMAN / PM

DESIGNER

DWG. DATE

08-18-17

REV. DATE / REVISION

08-23-17 CL / Notes & DT

08-24-17 CW / changes

SCALE

As Noted

FILE

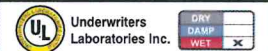
2017/Starbucks/Colorado
Springs CO/17-38415/SB
Colorado Springs.cdr

DESIGN SPECIFICATIONS ACCEPTED BY:

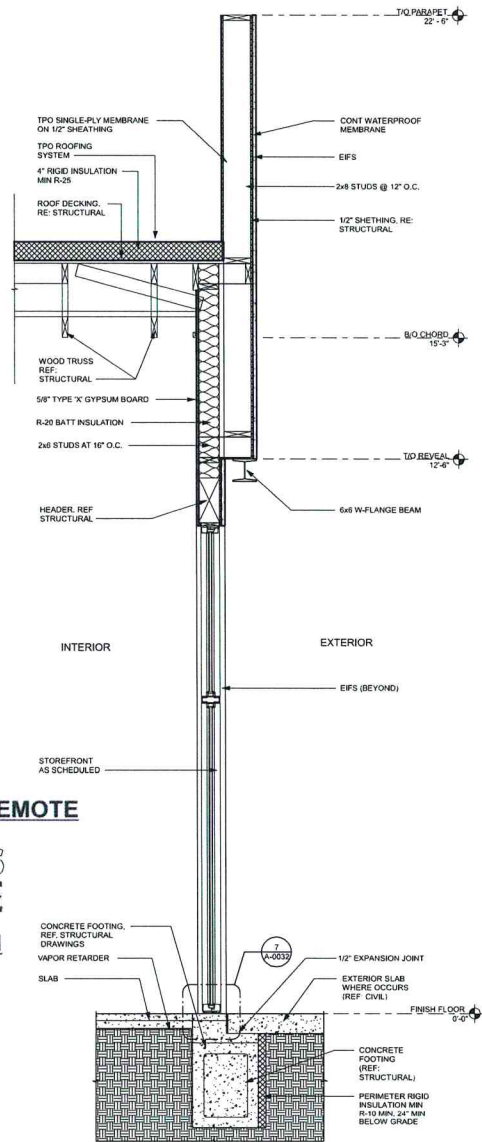
EST: CLIENT:

SLS/PM: LANDLORD:

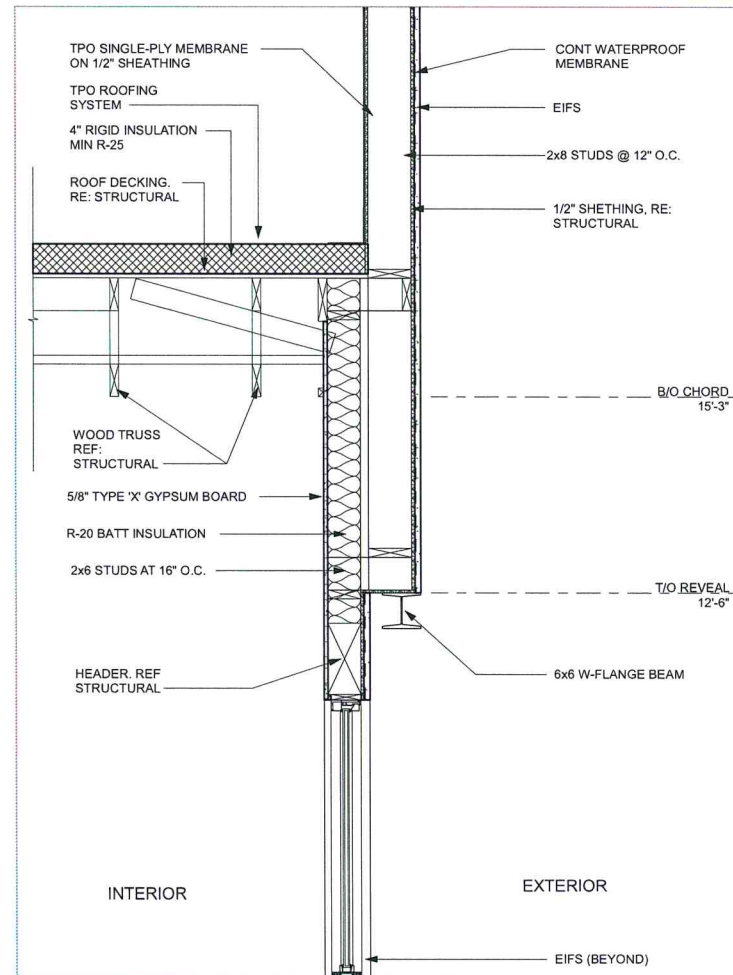
THE INTENT OF THIS DRAWING IS TO SHOW A CONCEPTUAL REPRESENTATION OF THE PROPOSED SIGNAGE. DUE TO VARIATIONS IN PRINTING DEVICES AND SUBSTRATES, THE FINISHED PRODUCT MAY DIFFER SLIGHTLY FROM DRAWING.



WALL SECTION



WALL SECTION THRU STOREFRONT WINDOWS



18" CHANNEL LETTERS - REMOTE

STARBUCKS



48" DT WALL SIGN

COLOR LEGEND	
PMS/Paint	VINYL
PMS 3425 C	3M 3630-76
RAL 7021M	3M 3630-22
PMS WHITE	3M 3630-20/ 7725-10 TRANSLUCENT OPAQUE
PMS 369 C	NA
REFL. WHITE	3M 680-10

QID 17-38415

JOB NAME

Starbucks #51410

LOCATION

209 Gleneagle Gate View
Colorado Springs, CO 80921

CUSTOMER CONTACT

SALESMAN / PM

DESIGNER

DWG. DATE

08-18-17

REV. DATE / REVISION

08-23-17 CL / Notes & DT

08-24-17 CW / changes

SCALE

As Noted

FILE

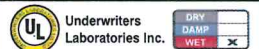
2017/Starbucks/Colorado
Springs CO/17-38415/SB
Colorado Springs.cdr

DESIGN SPECIFICATIONS ACCEPTED BY:

EST: CLIENT:

SLS/PM: LANDLORD:

THE INTENT OF THIS DRAWING IS TO SHOW A CONCEPTUAL REPRESENTATION OF THE PROPOSED SIGNAGE. DUE TO VARIATIONS IN PRINTING DEVICES AND SUBSTRATES, THE FINISHED PRODUCT MAY DIFFER SLIGHTLY FROM DRAWING.

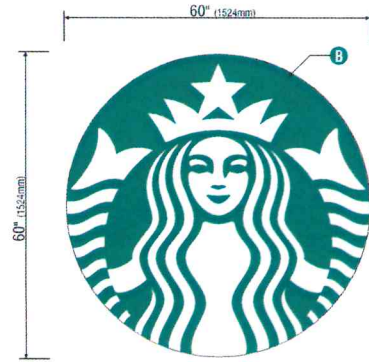


60" ILLUMINATED SIREN

Qty. 1

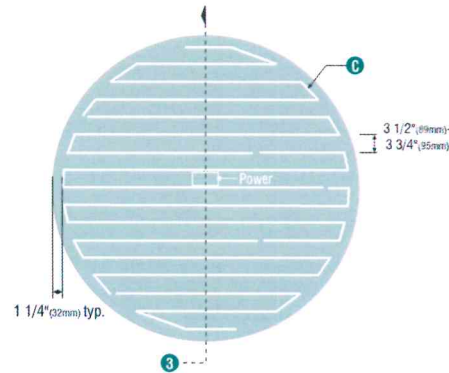
SBC S13164

A



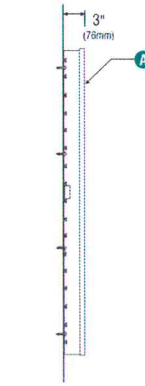
1 Front View

1/2" = 1' (11x17 Paper)



2 LED Detail

100% POWER BY Lumifluent



3 Section View



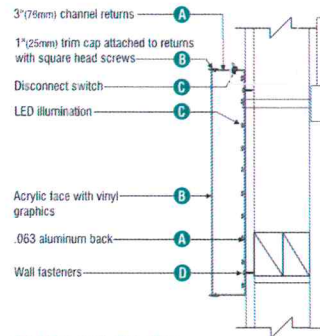
4 Side View

SPECIFICATIONS:

- A Single faced internally illuminated wall mount logo disk. Cabinet to be 6" (76mm) deep, fabricated aluminum sidewalls and back. Paint cabinet black polyurethane. Faces to be 3/16" (5mm) White acrylic. 1" black trimcap with square head screws retainer edging.
- B Graphics of logo to be 1st surface 3M Translucent Scotchcal vinyl- Holly Green #3630-76. Siren to show thru White.
- C Internally illuminate logo disk with Lumifluent™ white LED's installed to back of disk. Power with self-contained Lumifluent™ power supply enclosed in painted white j-box. Fasten to wall with required fasteners.

wall mount EVOLVED

Size	Sq.Ft.	Sq.M.	Volts
60" (1524mm)	19.62	1.82	120



5 Disk Section View Typ.

COLOR LEGEND

PMS/Paint	Vinyl
PMS 3425 C	3M 3630-76
RAL 7021M	3M 3630-22
PMS WHITE	3M 3630-20/ 7725-10 TRANSLUCENT OFFWHITE
PMS 369 C	NA
REFL. WHITE	3M 680-10

QID 17-38415

JOB NAME

Starbucks #51410

LOCATION

209 Gleneagle Gate View
Colorado Springs, CO 80921

CUSTOMER CONTACT

SALESMAN / PM

DESIGNER

DWG. DATE

08-18-17

REV. DATE / REVISION

08-23-17 CL / Notes & DT
08-24-17 CW / changes

SCALE

As Noted

FILE

2017/Starbucks/Colorado
Springs CO/17-38415/SB
Colorado Springs.cdr

DESIGN SPECIFICATIONS ACCEPTED BY:

EST. CLIENT:

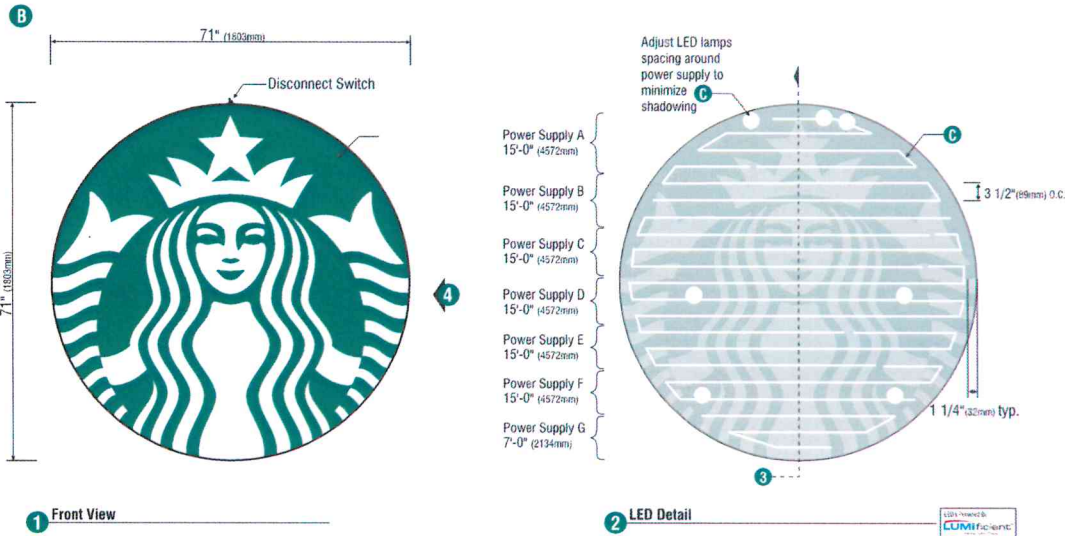
SLS/PM: LANDLORD:

THE INTENT OF THIS DRAWING IS TO SHOW A CONCEPTUAL REPRESENTATION OF THE PROPOSED SIGNAGE. DUE TO VARIATIONS IN PRINTING DEVICES AND SUBSTRATES, THE FINISHED PRODUCT MAY DIFFER SLIGHTLY FROM DRAWING.

Underwriters Laboratories Inc. DRY DAMP WET

71" ILLUMINATED SIREN

Qty. 1 SBC S13182

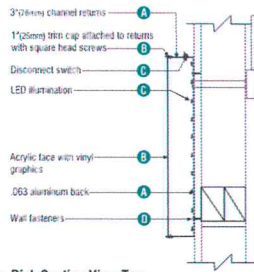


SPECIFICATIONS:

- A** Single faced internally illuminated wall mount logo disk. Cabinet to be 3" (76mm) deep, fabricated aluminum sidewalls and back. Paint cabinet black polyurethane. Faces to be 3/16" (5mm) White acrylic. 1" black trimcap with square head screws retain edging.
- B** Graphics of logo to be 1st surface 3M Translucent Scotchcal vinyl- Holly Green #3630-76. Siren to show thru White.
- C** Internally illuminate logo disk with Lumificient™ white LED's installed to back of disk. Power with self-contained Lumificient™ power supply enclosed in painted white j-box. Fasten to wall with required fasteners.

Disk 71in (1803mm) S/F Illuminated Flush Mounted Wall Sign EVOLVED			
Size	Sq.Ft.	Sq.M.	Volts
71" (1803mm)	35.0	3.25	120

COLOR LEGEND	
PMS/PANT	VINYL
PMS 3425 C	3M 3630-76
RAL 7021M	3M 3630-22
PMS WHITE	3M 3630-20/ 7725-10 TRANSLUCENT OFFWHITE
PMS 369 C	NA
REFL. WHITE	3M 680-10



QID 17-38415

JOB NAME

Starbucks #51410

LOCATION

209 Gleneagle Gate View
Colorado Springs, CO 80921

CUSTOMER CONTACT

SALESMAN / PM

DESIGNER

DWG. DATE

08-18-17

REV. DATE / REVISION

08-23-17 CL / Notes & DT
08-24-17 CW / changes

SCALE

As Noted

FILE

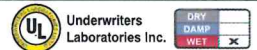
2017/Starbucks/Colorado
Springs CO/17-38415/SB
Colorado Springs.cdr

DESIGN SPECIFICATIONS ACCEPTED BY:

EST: CLIENT:

SLS/PM: LANDLORD:

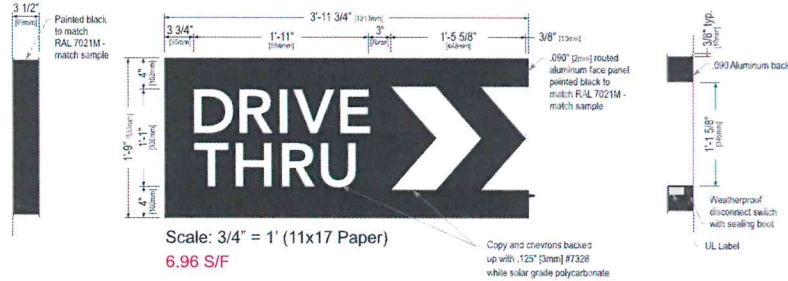
THE INTENT OF THIS DRAWING IS TO SHOW A CONCEPTUAL REPRESENTATION OF THE PROPOSED SIGNAGE. DUE TO VARIATIONS IN PRINTING DEVICES AND SUBSTRATES, THE FINISHED PRODUCT MAY DIFFER SLIGHTLY FROM DRAWING.



48" DT WALL SIGN

Qty. 2 SBC S14099

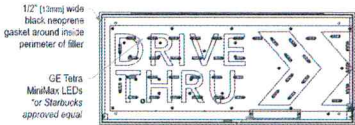
C



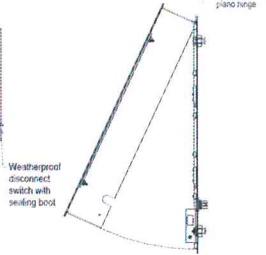
Left Side View

Front Elevation View

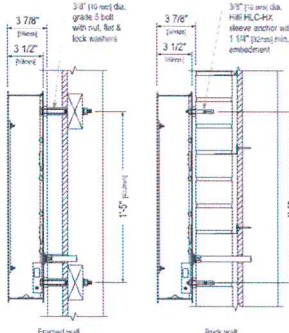
Right Side View



Vertical Cross-Section View, Typ.



Service Position View



Section View at Installation Detail

Sign Specifications:

Cabinet:

- Fabricated .090" (2mm) aluminum housing painted black to match RAL 7021M with 3M #180-10 white vinyl end cap as shown.
- Directional copy and chevrons backed up with .125" white polycarb. All polycarb face elements to be attached to aluminum face panel with weld studs.
- Welded aluminum construction with no visible fasteners. Fasteners retaining the hinged face will be located on the bottom such that they are not visible. All fasteners used in the assembly of internal components shall be coated to prevent corrosion.
- Internal structure of cabinet shall be per approved shop drawings.
- Graphic elements are internally illuminated using GE Tetra MiniMax LED system or Starbucks approved equal. LED's to be mounted on back panel with self-contained power supply. All electrical components are removable for service.

Regulatory:

- Sign must meet all regulations in the National Electric Code as well as any local or state electrical codes.
- As per NEC 600.6, sign is equipped with a service disconnect switch.
- Sign must be listed as an Electric Sign per Underwriters Laboratories UL48 and/or CSA and bear the appropriate UL, CUL or CSA relevant certification marks.
- Primary power by electrical contractor per NEC.

Size	Sq. Ft. ¹	Sq. Ft. ²	Volts	Amps
21"	4.52	6.96	120	0.85

1: Figured as illuminated center part
2: Figured as complete signage

COLOR LEGEND	
PMS/PANT	VBVYL
PMS 3425 C	3M 3630-76
RAL 7021M	3M 3630-22
PMS WHITE	3M 3630-20/ 7725-10 TRANSLUCENT OPAQUE
PMS 369 C	NA
REFL. WHITE	3M 680-10

QID 17-38415

JOB NAME

Starbucks #51410

LOCATION

209 Gleneagle Gate View
Colorado Springs, CO 80921

CUSTOMER CONTACT

SALESMAN / PM

DESIGNER

DWG. DATE

08-18-17

REV. DATE / REVISION

08-23-17 CL / Notes & DT
08-24-17 CW / changes

SCALE

As Noted

FILE

2017/Starbucks/Colorado
Springs CO/17-38415/SB
Colorado Springs.cdr

DESIGN SPECIFICATIONS ACCEPTED BY:

EST. CLIENT:

SLS/PM: LANDLORD:

THE INTENT OF THIS DRAWING IS TO SHOW A CONCEPTUAL
REPRESENTATION OF THE PROPOSED SIGNAGE. DUE TO
VARIATIONS IN PRINTING DEVICES AND SUBSTRATES, THE
FINISHED PRODUCT MAY DIFFER SLIGHTLY FROM DRAWING.

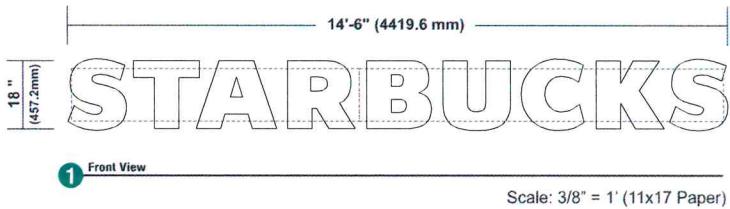
Underwriters
Laboratories Inc. DRY DAMP WET

18" CHANNEL LETTERS - REMOTE

SBC-S11395-SB-W

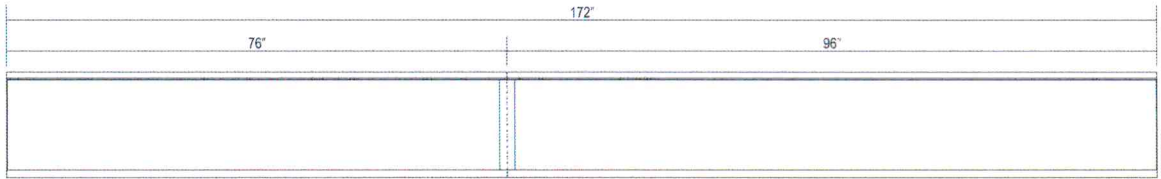
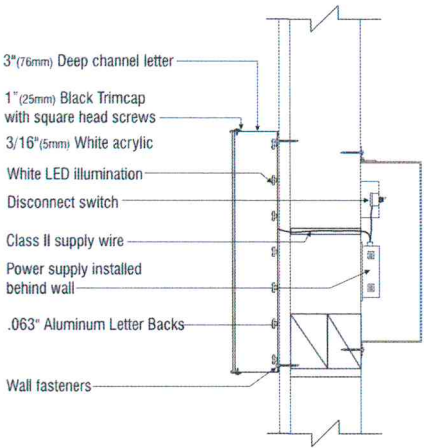
Qty. 1

D



SPECIFICATIONS

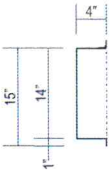
- A Internally illuminated channel letters to be fabricated from .040/3003 aluminum with pre-painted White interiors and painted satin finish Black polyurethane exteriors. Letter backs to be aluminum pop-riveted to sidewalls and sealed.
- B Faces to be 3/16" (5mm) White acrylic with 1" (25mm) Black trimcap retainer edging.
- C Letters illuminated w/ "Lumificient LED's w/ remote power supply.
- D Letters to be installed flush to wall.



Hinged Reverse Raceway
Scale: Not to Scale

SPECIFICATIONS

Reverse raceway manufactured from 0.090" aluminum with closed ends. Reverse raceway to be manufactured in, no less than, 2 sections with welded piano hinge for service access.



COLOR LEGEND	
PMS/Paint	VINYL
PMS 3425 C	3M 3630-76
RAL 7021M	3M 3630-22
PMS WHITE	3M 3630-20/ 7725-10 TRANSLUCENT OPAQUE
PMS 369 C	NA
REFL. WHITE	3M 680-10

QID 17-38415

JOB NAME

Starbucks #51410

LOCATION

209 Gleneagle Gate View
Colorado Springs, CO 80921

CUSTOMER CONTACT

SALESMAN / PM

DESIGNER

DWG. DATE

08-18-17

REV. DATE / REVISION

08-23-17 CL / Notes & DT
08-24-17 CW / changes

SCALE

As Noted

FILE

2017/Starbucks/Colorado Springs CO/17-38415/SB Colorado Springs.cdr

DESIGN SPECIFICATIONS ACCEPTED BY:

EST: CLIENT:

SLS/PM: LANDLORD:

THE INTENT OF THIS DRAWING IS TO SHOW A CONCEPTUAL REPRESENTATION OF THE PROPOSED SIGNAGE. DUE TO VARIATIONS IN PRINTING DEVICES AND SUBSTRATES, THE FINISHED PRODUCT MAY DIFFER SLIGHTLY FROM DRAWING.

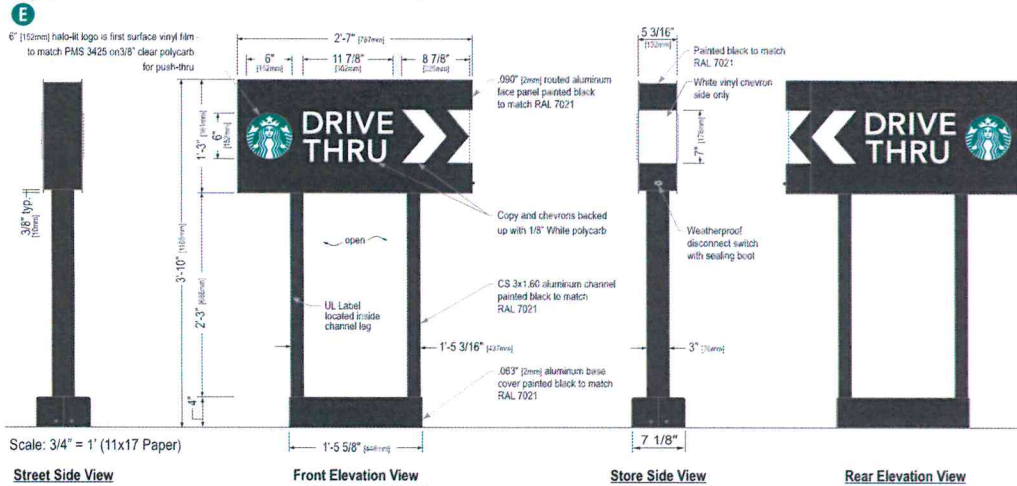
UL Underwriters Laboratories Inc.

DRY DAMP WET

46" ILLUMINATED DIRECTIONAL <DT / DT>

Qty. 3

SBC-S14104-DT

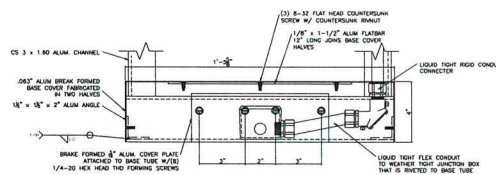
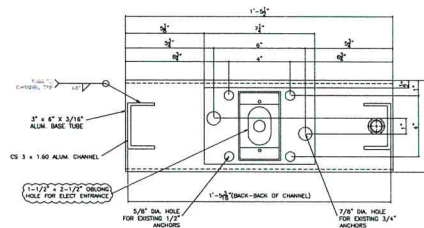
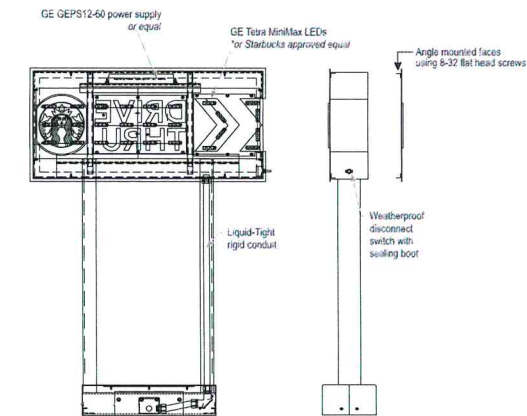


Street Side View

Front Elevation View

Store Side View

Rear Elevation View



COLOR LEGEND		
PMS/PANT	VINYL	
PMS 3425 C	3M 3630-76	
RAL 7021M	3M 3630-22	
PMS WHITE	3M 3630-20/ 7725-10	TRANSLUCENT OPAQUE
PMS 369 C	NA	
REFL. WHITE	3M 680-10	

Sign Specifications:

Cabinet:

- Fabricated .090" (2mm) aluminum housing painted black to match RAL 7021 with white end cap as shown.
- Directional copy and chevrons backed up with 1/8" White polycarb. Siren logo is 6" (152mm) diameter, 3/8" clear polycarb routed to push thru aluminum face. Decorate logo with 1st surface computer cut vinyl film to match PMS 3425. Edges of push thru logo are to be polished. All acrylic face elements to be attached to aluminum face panel with weld studs.
- Interior aluminum surfaces of sign cabinet to be painted white with Lacryl Starbrite.
- Internal structure of cabinet shall be per approved shop drawings.
- Graphic elements are internally illuminated using GE Tetra MiniMax LED system or Starbucks approved equal. LED's to be mounted on an internal baffle with self-contained power supply. All electrical components are removable for service.

Support:

- Supporting structure will be all welded aluminum tube and channel construction painted black to match RAL 7021 as per approved shop drawings and shall be integral to the sign cabinet.
- Base tube will be constructed so that it can be retro-fittable to existing sign foundations. All foundations, existing and new must be analyzed for suitability and must meet all local city or state codes regulations.

Size	Sq. Ft. ¹	Sq. Ft. ²	Volts	Amps
46" (1168mm)	3.23	9.90	120	0.85

QID 17-38415

JOB NAME

Starbucks #51410

LOCATION

209 Gleneagle Gate View
Colorado Springs, CO 80921

CUSTOMER CONTACT

SALESMAN / PM

DESIGNER

DWG. DATE

08-18-17

REV. DATE / REVISION

08-23-17 CL / Notes & DT
08-24-17 CW / changes

SCALE

As Noted

FILE

2017/Starbucks/Colorado
Springs CO/17-38415/SB
Colorado Springs.cdr

DESIGN SPECIFICATIONS ACCEPTED BY:

EST: CLIENT:

SLS PM: LANDLORD:

THE INTENT OF THIS DRAWING IS TO SHOW A CONCEPTUAL REPRESENTATION OF THE PROPOSED SIGNAGE. DUE TO VARIATIONS IN PRINTING DEVICES AND SUBSTRATES, THE FINISHED PRODUCT MAY DIFFER SLIGHTLY FROM DRAWING.

Underwriters
Laboratories Inc.

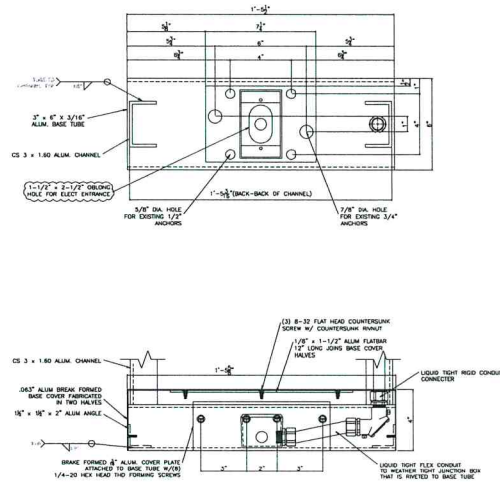
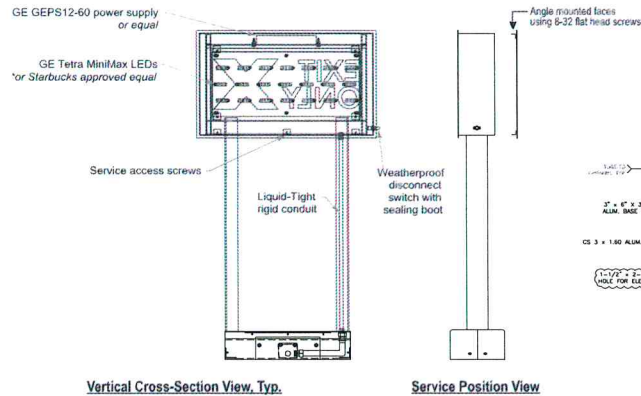
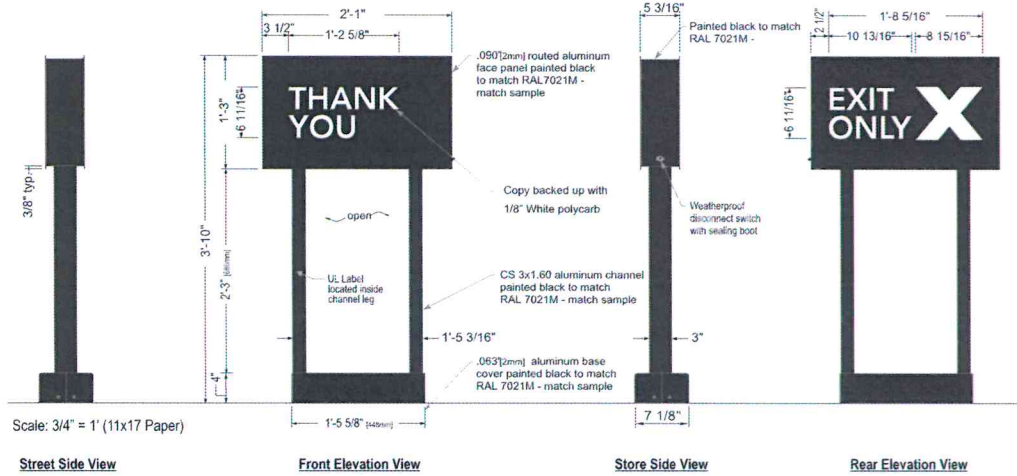
DRY
DAMP
WET

46" ILLUMINATED DIRECTIONAL TYEO

Qty. 1

SBC-S14091

F



COLOR LEGEND	
PMS/PANT	VINYL
PMS 3425 C	3M 3630-76
RAL 7021M	3M 3630-22
PMS WHITE	3M 3630-20/ 7725-10
PMS 369 C	NA
REFL. WHITE	3M 680-10

Sign Specifications:

Cabinet:

- Fabricated .090" [2mm] aluminum housing painted black to match RAL 7021M.
- Areas using black paint to match RAL 7021M shall have a max 20% gloss level, match sample.
- Directional copy backed up with .125" [3mm] white solar grade polycarbonate matching R&H #7328.
- Interior aluminum surfaces of sign cabinet to be painted white with Lacryl Starbrite.
- Welded aluminum construction. All fasteners used in the assembly of internal components shall be coated to prevent corrosion.
- Internal structure of cabinet shall be per approved shop drawings.
- Graphic elements are internally illuminated using GE Tetra MiniMax LED system or Starbucks approved equal. LED's to be mounted on an internal baffle with self-contained power supply. All electrical components are removable for service.

Support:

- Supporting structure will be all welded aluminum tube and channel construction painted black to match RAL 7021M as per approved shop drawings and shall be integral to the sign cabinet.
- Areas using black paint to match RAL 7021M shall have a max 20% gloss level, match sample.
- Base will be constructed so that it can be retro-fittable to existing sign foundations. All foundations, existing and new must be analyzed for suitability and must meet all local city or state codes regulations.

Regulatory:

- Sign must meet all regulations in the National Electric Code as well as any local or state electrical codes.
- As per NEC 600.6, sign is equipped with a service disconnect switch.
- Sign must be listed as an Electric Sign per Underwriters Laboratories UL48 and/or CSA and bear the appropriate UL, CUL or CSA relevant certification marks.
- Primary power by electrical contractor per NEC.

Size	Sq. Ft. ¹	Sq. Ft. ²	Volts	Amps
46" (1168mm)	2.60	7.99	120	0.85

QID 17-38415

JOB NAME

Starbucks #51410

LOCATION

209 Gleneagle Gate View
Colorado Springs, CO 80921

CUSTOMER CONTACT

SALESMAN / PM

DESIGNER

DWG. DATE

08-18-17

REV. DATE / REVISION

08-23-17 CL / Notes & DT
08-24-17 CW / changes

SCALE

As Noted

FILE

2017/Starbucks/Colorado
Springs CO/17-38415/SB
Colorado Springs.cdr

DESIGN SPECIFICATIONS ACCEPTED BY:

EST: CLIENT:

SLS/PM: LANDLORD:

THE INTENT OF THIS DRAWING IS TO SHOW A CONCEPTUAL REPRESENTATION OF THE PROPOSED SIGNAGE. DUE TO VARIATIONS IN PRINTING DEVICES AND SUBSTRATES, THE FINISHED PRODUCT MAY DIFFER SLIGHTLY FROM DRAWING.

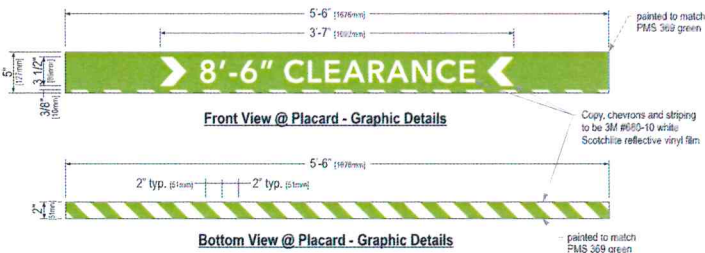
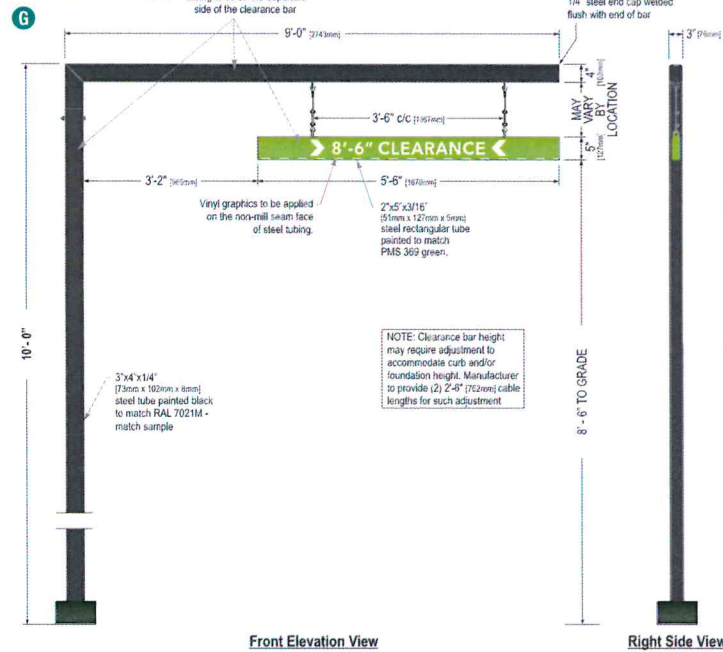
Underwriters
Laboratories Inc.

DRY
DAMP
WET

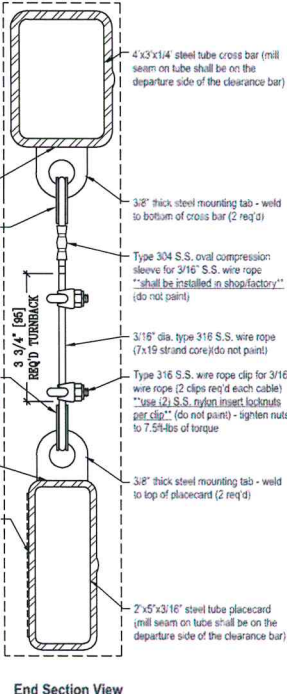
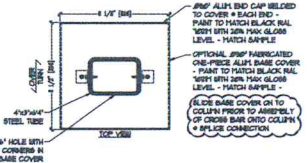
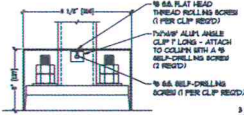
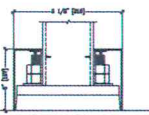
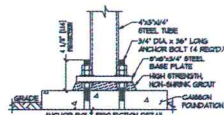
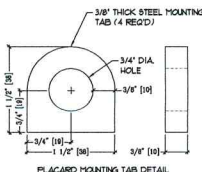
CLEARANCE BAR WITH BASE COVER SBC S14106-SHB-C-10

Qty. 1

(Standard Wind Load)



COLOR LEGEND	
PMS/PANT	VINYL
PMS 3425 C	3M 3630-76
RAL 7021M	3M 3630-22
PMS WHITE	3M 3630-20/ 7725-10 TRANSLUCENT OFFWHITE
PMS 369 C	NA
REFL. WHITE	3M 680-10



Sign Specifications:

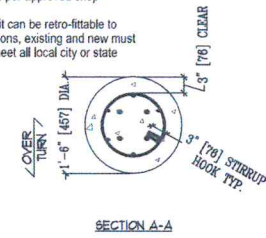
Scraper Bar:

- 2"x5" (51mm x 127mm) steel tube painted to match PMS 369 green.
- Flush steel end caps painted to match PMS 369 green.
- Copy and chevrons to be 1st surface computer cut 3M #680-10 white Scotchlite reflective vinyl film.
- Bottom striping to be 1st surface computer cut 3M #680-10 white Scotchlite reflective vinyl film. Striping extends 3/8" (10mm) onto front face.
- Suspend from support with SS cable & hardware. Cable provided requires field adjustment for proper clearance height.

Support:

- Supporting structure will be all welded steel tube construction painted black to match RAL 7021M as per approved shop drawings.
- Base tube will be constructed so that it can be retro-fittable to existing sign foundations. All foundations, existing and new must be analyzed for suitability and must meet all local city or state codes regulations.

Sq. Ft.
2.29



QID 17-38415

JOB NAME

Starbucks #51410

LOCATION

209 Gleneagle Gate View
Colorado Springs, CO 80921

CUSTOMER CONTACT

SALESMAN / PM

DESIGNER

DWG. DATE

08-18-17

REV. DATE / REVISION

08-23-17 CL / Notes & DT
08-24-17 CW / changes

SCALE

As Noted

FILE

2017/Starbucks/Colorado
Springs CO/17-38415/SB
Colorado Springs.cdr

DESIGN SPECIFICATIONS ACCEPTED BY:

EST: CLIENT:

SLS/PM: LANDLORD:

THE INTENT OF THIS DRAWING IS TO SHOW A CONCEPTUAL REPRESENTATION OF THE PROPOSED SIGNAGE. DUE TO VARIATIONS IN PRINTING DEVICES AND SUBSTRATES, THE FINISHED PRODUCT MAY DIFFER SLIGHTLY FROM DRAWING.

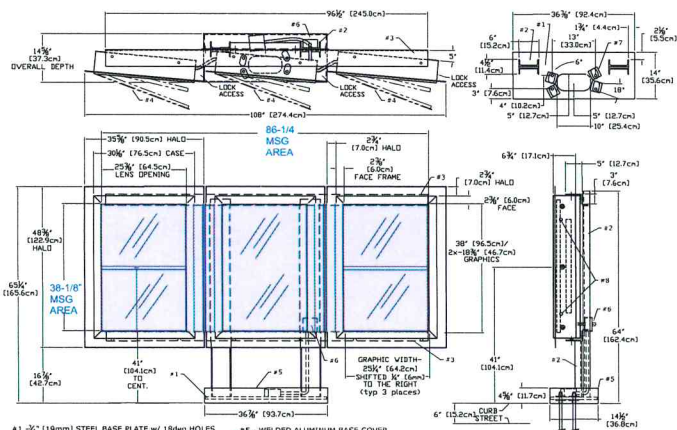
Underwriters
Laboratories Inc.

DRY
DAMP
WET

DT 5 Panel Menu Freestanding

Quantity: 1

MESSAGE AREA = $(86.25 \times 38.125) / 144 = 22.9 \text{ SQ FT}$



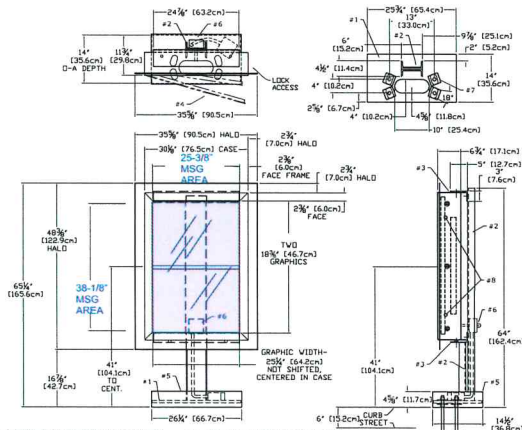
- #1 - 3/4" (19mm) STEEL BASE PLATE w/ 18deg HOLES PATTERN NOTED FOR 15deg THRU 30deg POSITION
- #2 - C6X10.5 (6"x2"x1/2") STEEL POST (2x)
- #3 - 5"x3"x1/2" STEEL SUPPORT ANGLES (2x)
- #4 - EXTENDED ALUMINUM MENU BOARDS (3x)
- #5 - ONE FULL AND TWO SPLIT PANEL LIGHTBOXES
- #6 - TWO 23 1/2"x38" AND FOUR 23 1/2"x18 1/2" GRAPHICS
- #7 - ALL GRAPHIC ASSEMBLIES SHIFTED 1/2" TO RIGHT STANDARD LED TUBE LIGHTING, SIDE LOCKS

- #8 - WELDED ALUMINUM BASE COVER
- #9 - WATER-TIGHT BOX w/SWITCH & SENSOR, RIGID CONDUIT RUN TO SECOND EXT BOX BELOW BASE COVER, 120 WATT, 0.30AFC
- #10 - 8 BASE WASHERS, 1/2" THICK
- #11 - TWO SIDE MOUNT LOCKS PER MENUBOARD RETAIN EXISTING KEY #E3-26-819-15

DT Pre-Order Freestanding

Quantity: 1

MESSAGE AREA = $(25.375 \times 38.125) / 144 = 6.72 \text{ SQ FT}$

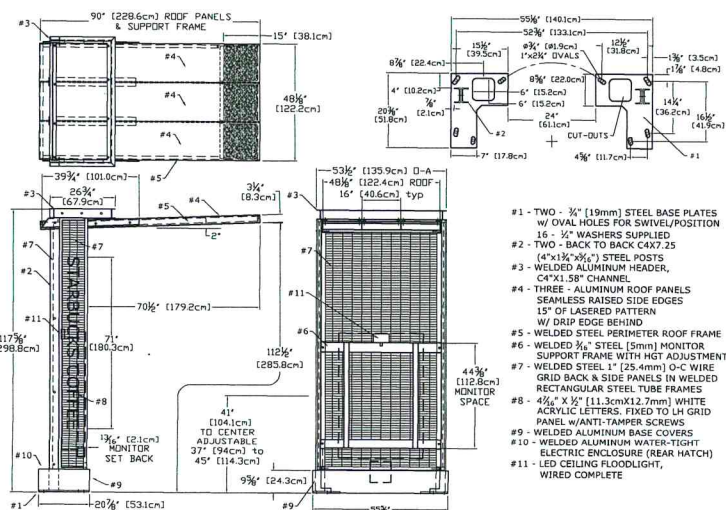


- #1 - 1/2" (19mm) STEEL BASE PLATE w/ 18deg HOLES PATTERN LEFT SQUARE / SYMMETRICAL
- #2 - C6X10.5 (6"x2"x1/2") STEEL POST (1x)
- #3 - 5"x3"x1/2" STEEL SUPPORT ANGLES (2x)
- #4 - EXTENDED ALUMINUM MENU BOARD (1x)
- #5 - ONE SPLIT PANEL LIGHTBOX
- #6 - TWO 23 1/2"x18 1/2" GRAPHICS
- #7 - GRAPHIC ASSEMBLY CENTERED, NOT SHIFTED STANDARD LED TUBE LIGHTING, SIDE LOCKS

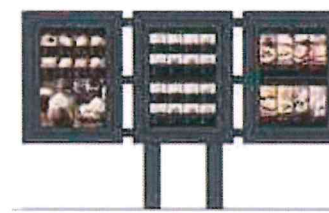
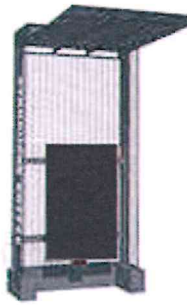
- #8 - WELDED ALUMINUM BASE COVER
- #9 - WATER-TIGHT BOX w/SWITCHES & SENSOR, RIGID CONDUIT RUN TO SECOND EXT BOX BELOW BASE COVER, 120 WATT, 0.30AFC
- #10 - 8 BASE WASHERS, 1/2" THICK
- #11 - TWO SIDE MOUNT LOCKS, RETAIN EXISTING KEY #E3-26-819-15

DT Order Point Canopy

Quantity: 1



- #1 - TWO - 3/4" (19mm) STEEL BASE PLATES w/ OVAL HOLES FOR SWIVEL/POSITION 16 - 1/2" WASHERS SUPPLIED
- #2 - TWO - BACK TO BACK C6X25 (4"x1 1/2"x1/2") STEEL POSTS
- #3 - WELDED ALUMINUM HEADERS, C4X1.58" CHANNEL
- #4 - THREE - ALUMINUM ROOF PANELS SEAMLESS RAISED SIDE EDGES 15" OF LASERED PATTERN W/ DRIP EDGE BEHIND
- #5 - WELDED STEEL PERIMETER ROOF FRAME
- #6 - WELDED 3/4" STEEL (5mm) MONITOR SUPPORT FRAME WITH HGT ADJUSTMENT
- #7 - WELDED STEEL 1" (25.4mm) O-C WIRE GRID BACK & SIDE PANELS IN WELDED RECTANGULAR STEEL TUBE FRAMES
- #8 - 4 1/2" X 1/2" (11.3cmX12.7mm) WHITE ACRYLIC LETTERS, FIXED TO LH GRID PANEL w/ANTI-TAMPER SCREWS
- #9 - WELDED ALUMINUM BASE COVERS
- #10 - WELDED ALUMINUM WATER-TIGHT ELECTRIC ENCLOSURE (NEAR HATCH)
- #11 - LED CEILING FLOODLIGHT, WIRED COMPLETE



QID 17-38415

JOB NAME

Starbucks #51410

LOCATION

209 Gleneagle Gate View
Colorado Springs, CO 80921

CUSTOMER CONTACT

SALESMAN / PM

DESIGNER

DWG. DATE

08-18-17

REV. DATE / REVISION

08-23-17 CL / Notes & DT
08-24-17 CW / changes

SCALE

As Noted

FILE

2017/Starbucks/Colorado
Springs CO/17-38415/SB
Colorado Springs.cdr

DESIGN SPECIFICATIONS ACCEPTED BY:

EST: CLIENT:

SLS/PM: LANDLORD:

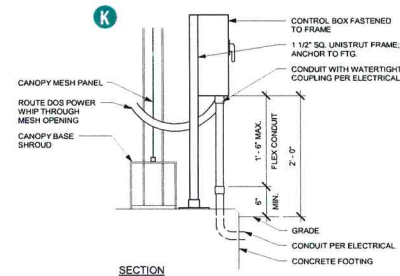
THE INTENT OF THIS DRAWING IS TO SHOW A CONCEPTUAL REPRESENTATION OF THE PROPOSED SIGNAGE. DUE TO VARIATIONS IN PRINTING DEVICES AND SUBSTRATES, THE FINISHED PRODUCT MAY DIFFER SLIGHTLY FROM THIS DRAWING.

Underwriters
Laboratories Inc.

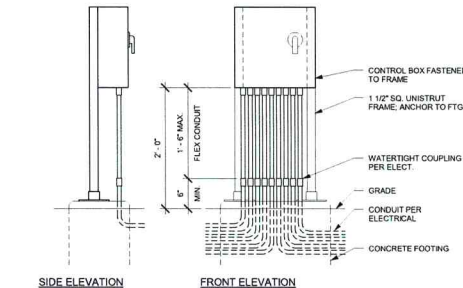
DRY
DAMP
WET

DT Digital Ordering System

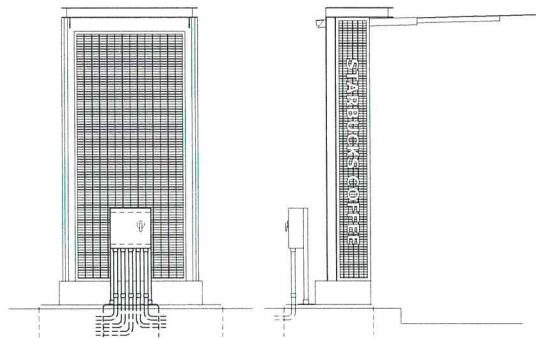
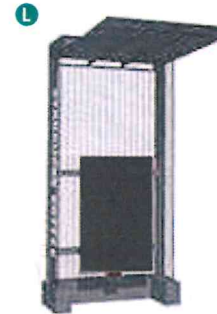
Quantity: 1



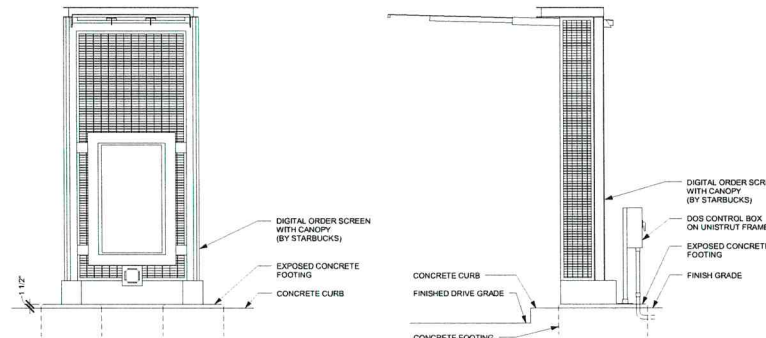
1 DTE - DOS CONTROL BOX AT CANOPY
Scale: 1/2" = 1'-0"



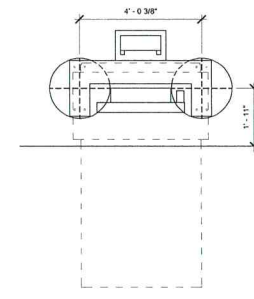
2 DTE - DOS CONTROL BOX FREESTANDING
Scale: 1/2" = 1'-0"



BACK ELEVATION LEFT ELEVATION



FRONT ELEVATION RIGHT ELEVATION



PLAN

7 DTE - DIGITAL ORDER SCREEN AND CONTROL BOX WITH CANOPY
Scale: 1/4" = 1'-0"

QID 17-38415

JOB NAME

Starbucks #51410

LOCATION

209 Gleneagle Gate View
Colorado Springs, CO 80921

CUSTOMER CONTACT

SALESMAN / PM

DESIGNER

DWG. DATE

08-18-17

REV. DATE / REVISION

08-23-17 CL / Notes & DT
08-24-17 CW / changes

SCALE

As Noted

FILE

2017/Starbucks/Colorado
Springs CO/17-38415/SB
Colorado Springs.cdr

DESIGN SPECIFICATIONS ACCEPTED BY:

EST. CLIENT:

SLS/PM: LANDLORD:

THE INTENT OF THIS DRAWING IS TO SHOW A CONCEPTUAL
REPRESENTATION OF THE PROPOSED SIGNAGE. DUE TO
VARIATIONS IN PRINTING DEVICES AND SUBSTRATES, THE
FINISHED PRODUCT MAY DIFFER SLIGHTLY FROM DRAWING.

