



LSC TRANSPORTATION CONSULTANTS, INC.
545 East Pikes Peak Avenue, Suite 210
Colorado Springs, CO 80903
(719) 633-2868
FAX (719) 633-5430
E-mail: lsc@lsctrans.com
Website: <http://www.lsctrans.com>

The Reserve at Corral Bluffs Filing No. 2
Updated Transportation Memorandum
PCD File No. SF-18-010
(LSC #184170)
May 24, 2018

Traffic Engineer's Statement

This traffic report and supporting information were prepared under my responsible charge and they comport with the standard of care. So far as is consistent with the standard of care, said report was prepared in general conformance with the criteria established by the County for traffic reports.



Developer's Statement

I, the Developer, have read and will comply with all commitments made on my behalf within this report.

Reviewed
by Howard J.
Kunstle, Pres
Date 5-24-18



LSC TRANSPORTATION CONSULTANTS, INC.
545 East Pikes Peak Avenue, Suite 210
Colorado Springs, CO 80903
(719) 633-2868
FAX (719) 633-5430
E-mail: lsc@lsctrans.com
Website: <http://www.lsctrans.com>

May 24, 2018

Mr. Howard Kunstle
Corral Ranches Development Company
6 South Tejon, Suite 515
Colorado Springs, CO 80903

RE: The Reserve at Corral Bluffs Filing No. 2
El Paso County, CO
PCD File No. SF-18-010
Updated Transportation Memorandum
LSC #184170

Dear Mr. Kunstle:

LSC Transportation Consultants, Inc. has prepared this updated transportation memorandum to accompany the submittal for the Reserve at Corral Bluffs Filing No. 2 located northwest of the intersection of Hoofbeat Road and Davis Road in unincorporated in El Paso County, Colorado. LSC prepared a traffic report for the entire Reserve at Corral Bluffs development dated May 1, 2012 (and correction letter dated May 31, 2012). The lot and street plan has not changed since completion of that report. Also, a report for Filing 1 was prepared. This report was dated August 29, 2013. An exhibit showing the location of Filing No. 2 is attached for reference. This includes the lot and roadway layout.

SITE PLAN AND ACCESS

The Reserve at Corral Bluffs Filing No. 2 is planned to include six lots for single-family homes. The Filing 2 plan conforms with the overall plan analyzed in the 2012 LSC study. A copy is attached for reference.

Proposed access to Filing 2 will be via an extension of Hoofprint Road south from the southeast boundary of Filing 1 to the eastern boundary of Filing No. 2. The Filing 2 cul-de-sac street would extend south from this point. A deviation request for length of cul-de-sac has been prepared and is included with the submittal.

TRIP GENERATION

Estimates of the traffic volumes expected to be generated by the site have been made using the nationally published trip generation rates found in *Trip Generation, 10th Edition, 2017* by the

Institute of Transportation Engineers (ITE). Table 1 shows the results of the trip generation estimates.

As shown in Table 1, The Reserve at Corral Bluffs Filing No. 2 is projected to generate about 57 new vehicle-trips on the average weekday, with about one-half of the vehicles entering and one-half of the vehicles exiting in a 24-hour period. During the morning peak hour, which generally occurs for one hour between 6:30 and 8:30 a.m., about one vehicle would enter and three vehicles would exit the site. During the afternoon peak hour, which generally occurs for one hour between 4:30 and 6:30 p.m., about four vehicles would enter and two vehicles would exit the site.

SHORT-TERM AND LONG-TERM TOTAL TRAFFIC

Conditions from the previous traffic report dated May 1, 2012 (and correction letter dated May 31, 2012) remain unchanged. The traffic counts were completed in the fall of 2011; however, to our knowledge, little development has occurred in this area, so it is unlikely that the traffic volumes have increased significantly. Please refer to Preliminary Plan TIS for the short-term and long-term total traffic volumes, level of service analysis.

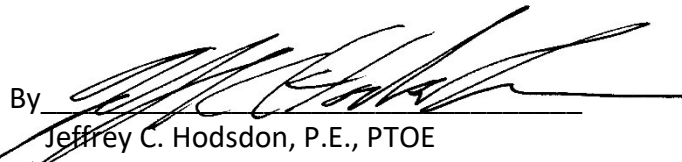
ROADWAY IMPROVEMENT FEE PROGRAM

The Countywide Roadway Improvement Fee will be paid entirely at building permit, and the developer will **opt out** of the PID. Based on a fee of \$3,532 per unit, a total of \$21,192 for the six-lot Filing No. 2 plat would be payable at the building permit stage.

Please contact me if you have any questions or need further assistance.

Sincerely,

LSC TRANSPORTATION CONSULTANTS, INC.

By 
Jeffrey C. Hodsdon, P.E., PTOE
Principal

JCH:KDF:bjwb

Enclosure: Exhibit
Table 1
The Reserve at Corral Bluffs Updated Transportation Memorandum dated 5-1-2012
The Reserve at Corral Bluffs Report Correction dated 5-31-12

THE RESERVE AT CORRAL BLUFFS SUBDIVISION

GRADING AND EROSION CONTROL PLAN

WORK SCALE	200'	DRAWN	MSR
VERT. SCALE	N/A	DESIGNED	MSR
SURVEYED	N/A	CHECKED	MSR
CREATED	08/20/12	LAST MODIFIED	MSR
PROJECT NO.	081104	MODIFIED BY	MSR
SHEET			

C1

GENERAL DRAINAGE NOTES:

1. INDIVIDUAL BUILDERS SHALL PROVIDE POSITIVE DRAINAGE AWAY FROM STRUCTURES AND ACCOUNT FOR POTENTIAL CROSS-LOT DRAINAGE IMPACTS WITHIN EACH LOT.
2. BUILDERS AND PROPERTY OWNERS SHALL IMPLEMENT & MAINTAIN EROSION CONTROL BEST MANAGEMENT PRACTICES FOR PROTECTION OF DOWNSTREAM PROPERTIES AND FACILITIES INCLUDING PROTECTION OF EXISTING GRASS BUFFER STRIPS ALONG THE DOWNSTREAM PROPERTY BOUNDARIES.

ESTIMATED EARTHWORK QUANTITIES:

UNCLASSIFIED EXCAVATION (TOTAL CUT) = 33,921 CY
EMBANKMENT FILL = 43,194 CY
NET (CUT) = 17,027 CY

* (ASSUMES 15% COMPACTION FACTOR)

NOTE: THIS ESTIMATE IS PROVIDED FOR INFORMATION ONLY. IT DOES NOT INCLUDE ANY ADJUSTMENTS FOR PAVEMENT DEPTHS. CONTRACTOR SHALL MAKE HIS OWN DETERMINATION OF EARTHWORK QUANTITIES AS BASIS FOR BID PRICING AND NOTIFY ENGINEER OF ANY DISCREPANCIES.

KEYED NOTES:

- ① CONTRACTOR MAY WASTE EXCESS CUT MATERIAL OR BORROW SUITABLE FILL MATERIAL FROM THIS AREA. MATCH INTO EXISTING GRADES WITH 3:1 MAX CUT AND FILL SLOPES AND MAINTAIN POSITIVE DRAINAGE IN ALL AREAS.

BMP PHASING

- INITIAL BMP'S
 - INSTALL VTC
 - INTERIM BMP'S
 - STRAW BALE CHECK DAMS
 - FINAL BMP'S
 - RIPRAP APRONS
 - SEEDING

LEGEND

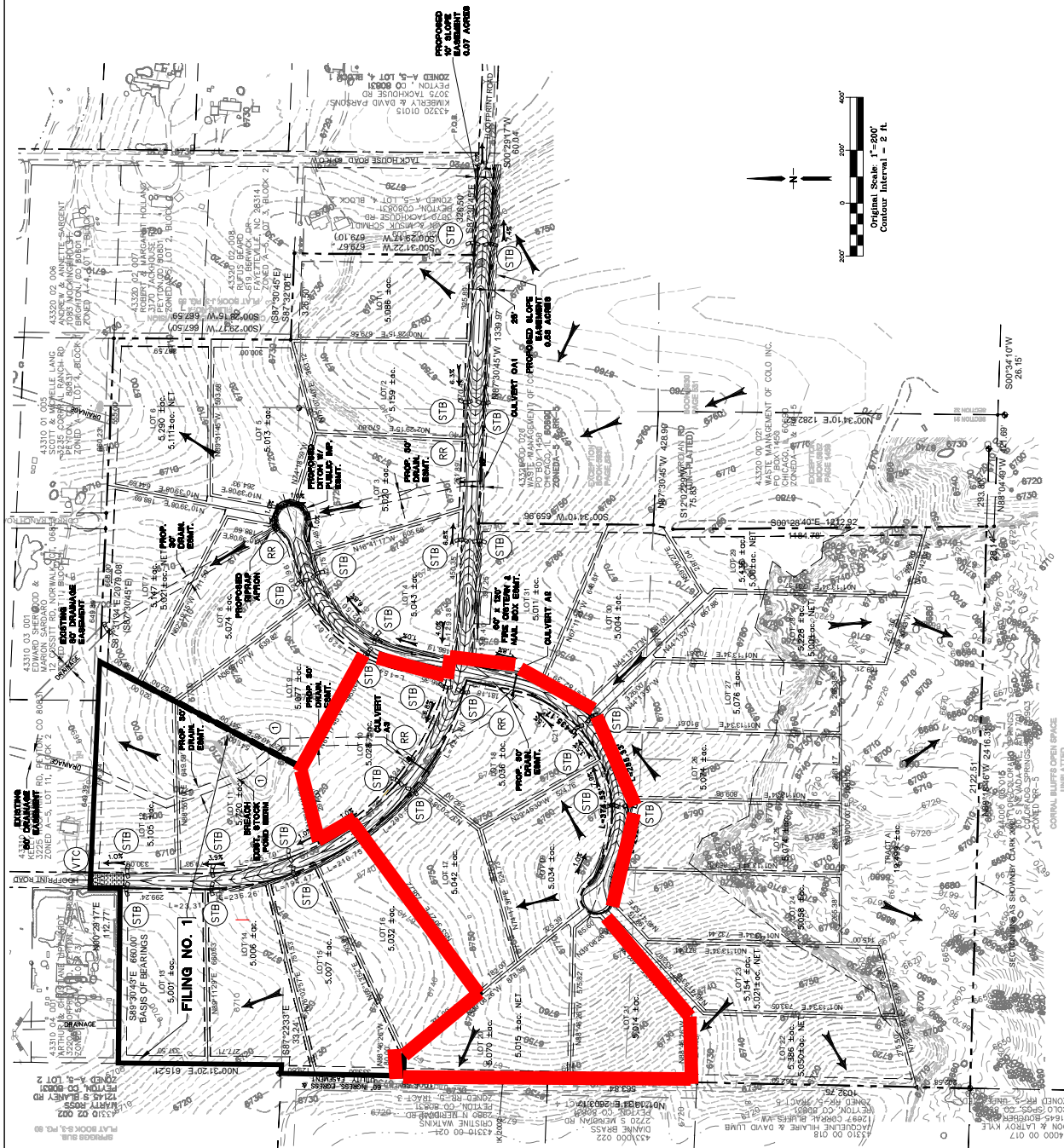
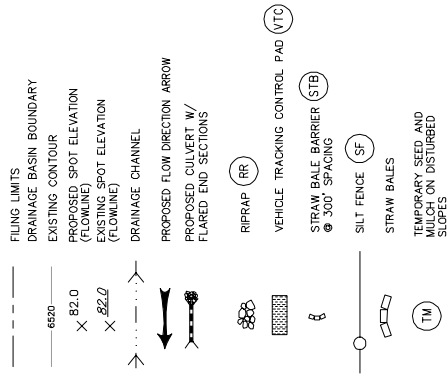


Table 1
Trip Generation Estimate
The Reserve at Corral Bluffs Filing No. 2

Land Use Code	Land Use Description	Trip Generation Units	Trip Generation Rates ⁽¹⁾						Total Trips Generated			
			Average Weekday Traffic	Morning		Afternoon		Average Weekday Traffic	Morning		Afternoon	
				Peak Hour		Peak Hour			Peak Hour		Peak Hour	
				In	Out	In	Out		In	Out	In	Out
210	Single-Family Detached Housing	6 DU ⁽²⁾	9.44	0.19	0.56	0.62	0.37	57	1	3	4	2
<p>Notes:</p> <p>(1) Source: "<i>Trip Generation, 10th Edition, 2017</i>" by the Institute of Transportation Engineers (ITE)</p> <p>(2) DU = dwelling unit</p> <p>Source: LSC Transportation Consultants, Inc.</p>												



516 North Tejon Street
Colorado Springs, CO 80903
(719) 633-2868
FAX (719) 633-5430
E-mail: lsc@lscs.com

May 1, 2012

Mr. Howard J. Kunstle
Corral Ranches Development Company
6 South Tejon, Suite 515
Colorado Springs, CO 80903

RE: The Reserve at Corral Bluffs
Updated Transportation Memorandum
LSC #114740

Dear Jake:

LSC Transportation Consultants, Inc. has prepared this Updated Transportation Memorandum for the proposed Reserve at Corral Bluffs. As shown on Figure 1, the site is located northwest of the intersection of Hoofbeat Road and Davis Road in unincorporated El Paso County, Colorado. The site plan is shown in Figure 2.

LETTER CONTENT

This letter is being prepared to accompany a land use submittal to El Paso County. This Updated Transportation Memorandum contains a description of the roadways in the vicinity of the site including existing conditions and future plans for these roadways; the results of traffic counts on the area roadways; the proposed land use; a discussion of the site's access and internal roadway circulation; estimates of the average daily and peak-hour trip generation of the proposed development; the estimated directional distribution of site-generated traffic and estimates of site-generated traffic on the area roadways; projections of the short- and long-term traffic volumes on the area roadways; a description of the relative impacts of the site; the project's anticipated requirements for participation in the Countywide Transportation Fee Program; and recommendations.

AREA ROADWAYS

The key area roadways are shown on Figure 1, and are described below.

- **Meridian Road** is a rural, paved, two-lane roadway extending north from South Blaney Road to US Highway 24. Locally, Meridian has a posted speed limit of 40 miles per hour (mph). This section of Meridian Road is shown as a two-lane Minor Arterial on the *2040 El Paso County Major Transportation Corridors Plan (MTCP)* (soon to be adopted) and on the *2060 El Paso County Corridor Preservation Plan* (soon to be adopted).

- **South Blaney Road** is a rural, two-lane gravel roadway extending west from Hoofbeat Road to its terminus just west of Meridian Road. South Blaney Road has a posted speed limit of 40 mph. South Blaney is shown as a future two-lane Major Collector on the *2040 El Paso County Major Transportation Corridors Plan (MTCP)* and a four-lane Minor Arterial on the *2060 El Paso County Corridor Preservation Plan*. The MTCP shows a future connection between South Blaney Road and future Barnes Road to the west within Banning Lewis Ranch (City of Colorado Springs). See Figure 9.
- **Hoofbeat Road** is a rural, two-lane gravel roadway extending from South Blaney Road south to Davis Road. Hoofbeat Road is shown, along with South Blaney and Davis Road, as part of an east-west, two-lane Major Collector connection on the *2040 El Paso County Major Transportation Corridors Plan (MTCP)*. This connection is shown as a four-lane Minor Arterial on the *2060 El Paso County Corridor Preservation Plan*.
- **Davis Road** is a rural, two-lane gravel roadway extending east from Hoofbeat Road to east of Curtis Road. Davis Road is shown, along with Hoofbeat Road and South Blaney, as part of an east-west, two-lane Major Collector connection on the latest *2040 El Paso County Major Transportation Corridors Plan (MTCP)*. This connection is shown as a four-lane Minor Arterial on the *2060 El Paso County Corridor Preservation Plan*.
- **Hoofprint Road, Corral Ranch Road, and Tackhouse Road** are rural local gravel roads extending south from South Blaney Road adjacent to the site. The posted speed limit on these roads is 30 mph. Hoofprint Road would extend south into the site to provide site access to the north. This new section of Hoofprint Road within the site would curve to the east and connect to existing Hoofprint Road at Tackhouse Road. See Figure 9.

EXISTING TRAFFIC VOLUMES

Figure 3 shows current traffic volumes on roadways in the vicinity of the site. These traffic counts were conducted by LSC in September 2011. The volumes shown are average daily traffic in vehicles per day, both directions. Average daily volumes are the weighted average of weekday and weekend traffic volumes.

FUTURE BACKGROUND (BASELINE) TRAFFIC VOLUMES

Background traffic is the traffic estimated to be on the road system in the vicinity of the site without consideration of the trips to be generated by the proposed development. Background traffic estimates do consider the planned site road system to be in place. Figure 4 shows the projected short-term background traffic volumes. These volumes are existing volumes with some minor redistribution of traffic with the new Hoofprint Road within the site. The 2040 background traffic has been taken from traffic volume projections contained in the current version of the MTCP (soon to be adopted by the Board of County Commissioners). These long-term background traffic volumes are shown in Figure 5. The MTCP 2040 volumes account for a planned future connection between South Blaney Road and future Barnes Road in Banning Lewis Ranch (Colorado Springs). Projected volumes on the east-west collector route of future Barnes Road through Banning Lewis Ranch (Colorado Springs), South Blaney Road, Hoofbeat Road, and Davis Road are about 7,500 vehicles per day.

SITE LAND USE

The 184-acre site is planned to be developed with 31 single-family detached homes on five-acre lots. The site plan is shown in Figure 2. The area to the south is undeveloped land owned by the City of Colorado Springs (purchased for future park purposes), and the area to the west is sparse residential development. The areas to the north are generally developed five-acre residential lots.

Access to the site would be from the existing gravel Hoofprint Road to the north (which exits onto South Blaney Road) and the existing Hoofprint Road to the east (which exits onto Hoofbeat Road). Currently the two primary routes to and from the site are South Blaney Road to Meridian Road and South Blaney Road to East Blaney. The existing Hoofprint entrances would be connected internally by a new road to be constructed, thus linking the existing separate Hoofprint street segments together. Other routes include Davis Road to either Blaney Road or Curtis Road (both extend south to Highway 94).

TRIP GENERATION

The vehicle-trips to be generated by 31 single-family homes have been estimated using rates published in *Trip Generation, 8th Edition, 2008* by the Institute of Transportation Engineers (ITE). Rates calculated from local trip generation data collected in the immediate vicinity of the site are also shown in the table. These data and rates calculated from them are provided for information only. The site-generated traffic volumes on area roads have been calculated based on ITE trip generation information, not on local data.

Table 1 shows the average daily, average weekday, and weekday morning and afternoon peak-hour trip generation estimates.

Given the local trip generation study, the trip generation estimates based on standard ITE rates may be conservative. LSC conducted this small-scale trip generation study for the developed areas in the immediate vicinity of the site. LSC conducted traffic counts at the entry/exit points to adjacent rural neighborhood areas to identify the trips generated by these areas. Trip generation rates were then developed by dividing the trips entering and exiting at the entry/exit points by the number of homes served by these entry/exit locations. The results indicate trip generation rates of 6.14 trips per dwelling unit. These rates are also shown in Table 1. The trip generation study is attached as Appendix A.

DISTRIBUTION AND ASSIGNMENT

The directional distribution of site-generated traffic on the area road system is an important factor in the determination of the traffic impacts of the project. The specific distribution estimate for site-generated traffic is shown in Figure 6. This estimate is based on the following factors: traffic counts conducted in the area; the location of the site with respect to employment, commercial, and activity centers; the existing and proposed road network serving the site; the land use proposed for the site; and the proposed access system for the site.

When the distribution percentages shown in Figure 6 are applied to the daily trip generation estimates shown in Table 1, the site-generated traffic volumes on the area roads can be determined. Figure 5 also shows the site-generated average daily traffic volumes. These volumes have been

estimated using ITE trip rates shown in Table 1, not those derived from the local trip generation data collected in the immediate vicinity. As the local data collected suggests lower trip rates, the number in Figure 6 may be conservative.

SHORT-TERM TOTAL TRAFFIC

Existing plus site-generated traffic volumes are shown in Figure 7. These traffic volumes are the sum of site-generated volumes from Figure 6 plus the short-term background volumes from Figure 4. These volumes represent the projected short-term impacts of the proposed development.

2040 TOTAL TRAFFIC

Total traffic volumes for 2040 are shown in Figure 8. Total traffic volumes are the sum of the site-generated volumes from Figure 6 plus the 2040 background traffic volumes from Figure 5. These volumes represent the projected long-term impacts of the proposed development.

RECOMMENDATIONS

Figure 9 shows the following recommendations:

Internal Road System

The internal site roads are planned to be constructed as new gravel roads per *Engineering Criteria Manual* (ECM) standards for gravel roads. The primary roadway within the site—Hoofprint Road—would connect to existing gravel roads (both called Hoofprint Road) to the north and east. The projected average daily traffic volumes on these road segments are appropriate for gravel. Projections indicate that volumes on the new segment would be close to but slightly over the 200 ADT threshold. Moreover, the character of this area is rural, with five-acre lots and existing local gravel roads. The plan to construct gravel roads within this subdivision would be consistent with the character of the area.

Off-Site Roads and the Countywide Transportation Fee Program

This project will participate in the new countywide transportation impact fee program. Building permit fees and countywide PID taxes collected from this project site are programmed for use primarily in helping to fund (or reimburse developments for completing) eligible transportation projects in the program benefit district of which this site is a part. One of the projects identified within this benefit district is the upgrade of the South Blaney Road/Hoofbeat Road/Davis Road east-west route through this area to county rural Major Collector standards. The MTCP phasing plan shows this roadway improvement project is anticipated for completion during the 2011-2020 time period.

Although the upgrade of South Blaney, Hoofbeat, and Davis roads is programmed into the MTCP and the countywide fee program, a deviation will be required for the segment of South Blaney Road west of Hoofprint Road. The deviation will allow this segment to remain a gravel road following the completion of this development project despite the current and short-term projected ADT being over the ECM 200 vehicles-per-day threshold for requiring roadways to be paved. The justification is that

fees collected from this and other area-wide development projects will collectively be used in part to complete the upgrade of these off-site roads and the paving would occur as part of the upgrade to rural Major Collector Standards.

CONCLUSIONS/ RECOMMENDATIONS

Conclusions


1. **Trip Generation:** Trip generation for this site has been estimated based on Institute of Transportation Engineers (ITE) rates. Also shown, for information only, are local rates developed using trip generation data (actual counts) collected in the immediate vicinity of the site. Table 1 presents the trip generation estimates for the site and an estimate of the trip rates for the local area for information only. The trip generation study by LSC is attached.
2. **Traffic Impacts:** This project is projected to add about ²⁵⁵147 vehicles per day to both Hoofprint Road just south of South Blaney Road and South Blaney Road just west of Hoofprint Road. ~~This projected increase in daily traffic volume is based on the application of the locally-derived trip generation rates from the LSC trip generation study in the vicinity.~~
3. **Transportation Impact Fee:** This development will be subject to participation in the County-wide Transportation Impact Fee Program. Please refer to the section of this report immediately preceding this "Conclusions" section for details.
4. **Recommendations:** The planned new subdivision roads are proposed to be built to county gravel road standards. Regarding off-site roads in the site's vicinity, please refer to the section of this report immediately preceding this conclusions section.
5. The street name sign is missing at the Hoofprint Road/Hoofbeat Road intersection. LSC recommends that the County install a replacement sign.

JCH
5/30/12

We trust this Updated Transportation Memorandum will assist you in gaining approval of the proposed Reserve at Corral Bluffs. Please contact me if you have any questions or need further assistance.

Sincerely,

LSC TRANSPORTATION CONSULTANTS, INC

By 
Jeffrey C. Hodsdon, PE, PTOE
Principal

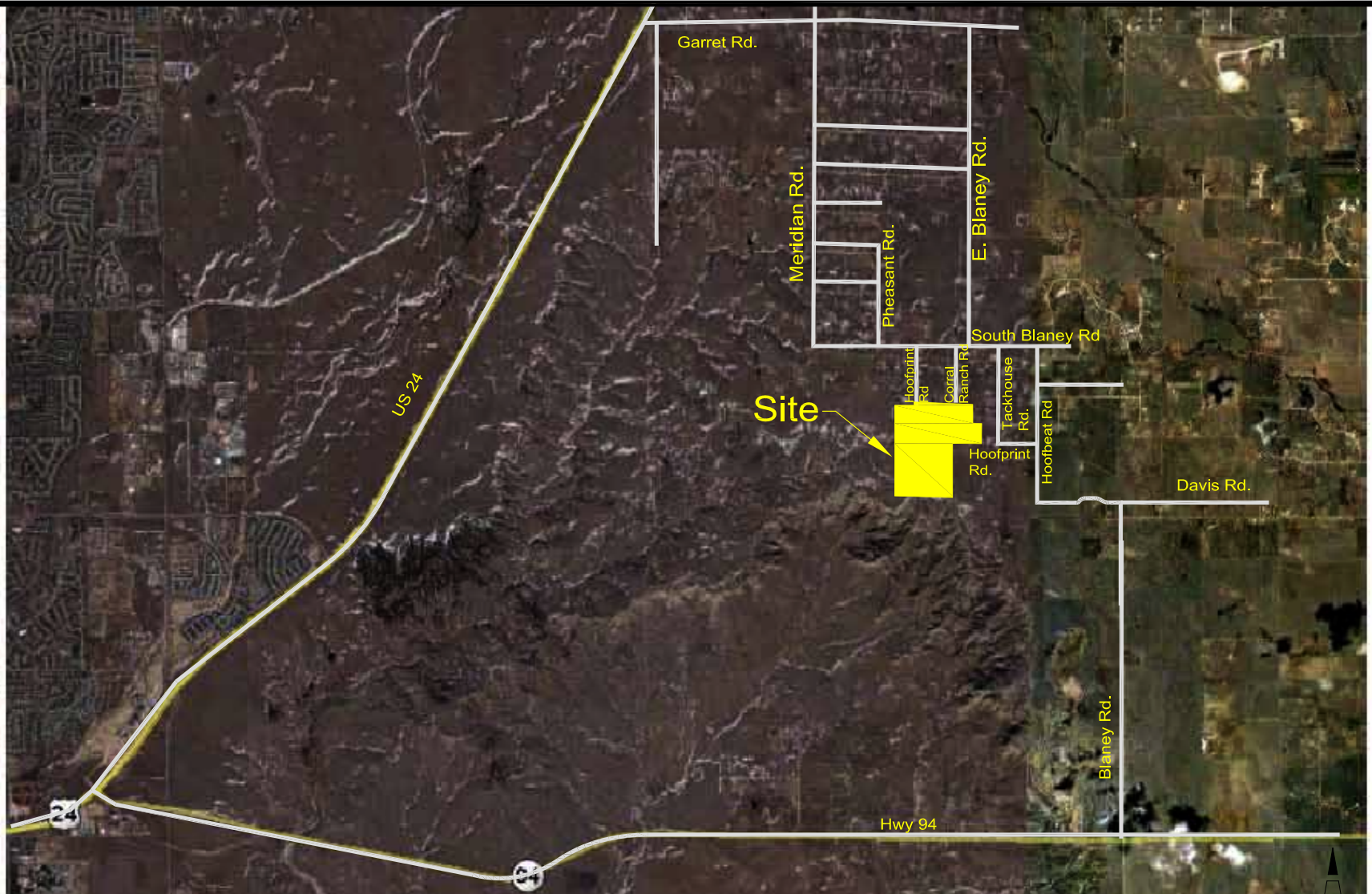


JCH:bjwb

Enclosures: Table 1
Figures 1-9
Appendix A - Trip Generation Study
Traffic Count Data Sheets

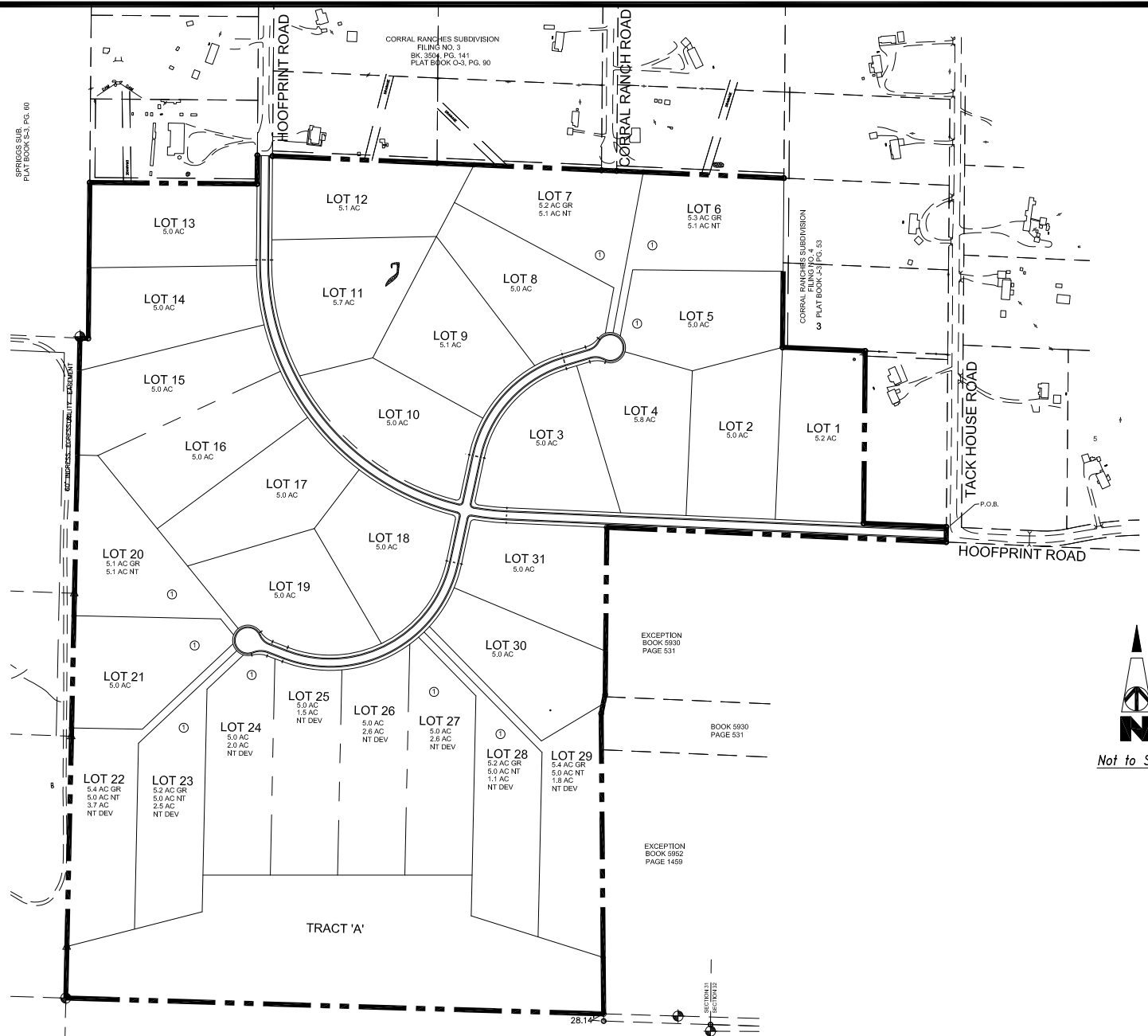
<p style="text-align: center;">Table 1</p> <p style="text-align: center;">Trip Generation Estimate</p> <p style="text-align: center;">The Reserve at Corral Bluffs</p>
--

Land Use Code	Land Use Description	Trip Generation Units	Trip Generation Rates ⁽¹⁾⁽³⁾						Total Trips Generated ⁽⁴⁾					
			Average Weekday Traffic	Average Daily Traffic	Morning Peak Hour		Afternoon Peak Hour		Average Weekday Traffic	Average Daily Traffic	Morning Peak Hour		Afternoon Peak Hour	
					In	Out	In	Out			In	Out	In	Out
<u>Based on ITE Rates</u>														
210	Single-Family Detached Housing	31 DU	9.57	9.53	0.19	0.56	0.64	0.37	297	295	6	17	20	12
For information only -- not used in the calculation of volumes shown on Figure 6														
<u>Rates based on Field-Collected Data ⁽³⁾</u>														
210	Single-Family Detached Housing		6.14	5.68	0.06	0.18	0.21	0.13						
Notes: (1) Source: Rates in the first row have been taken from "Trip Generation, 8th Edition, 2008" by the Institute of Transportation Engineers (ITE). (2) DU = Dwelling Units (3) Please refer to supplemental worksheet for data collected and rate calculation (4) Average weekday and average daily trip generation units are vehicles per day; Peak hour trip generation units are vehicles per hour.														
Source: LSC Transportation Consultants, Inc.														



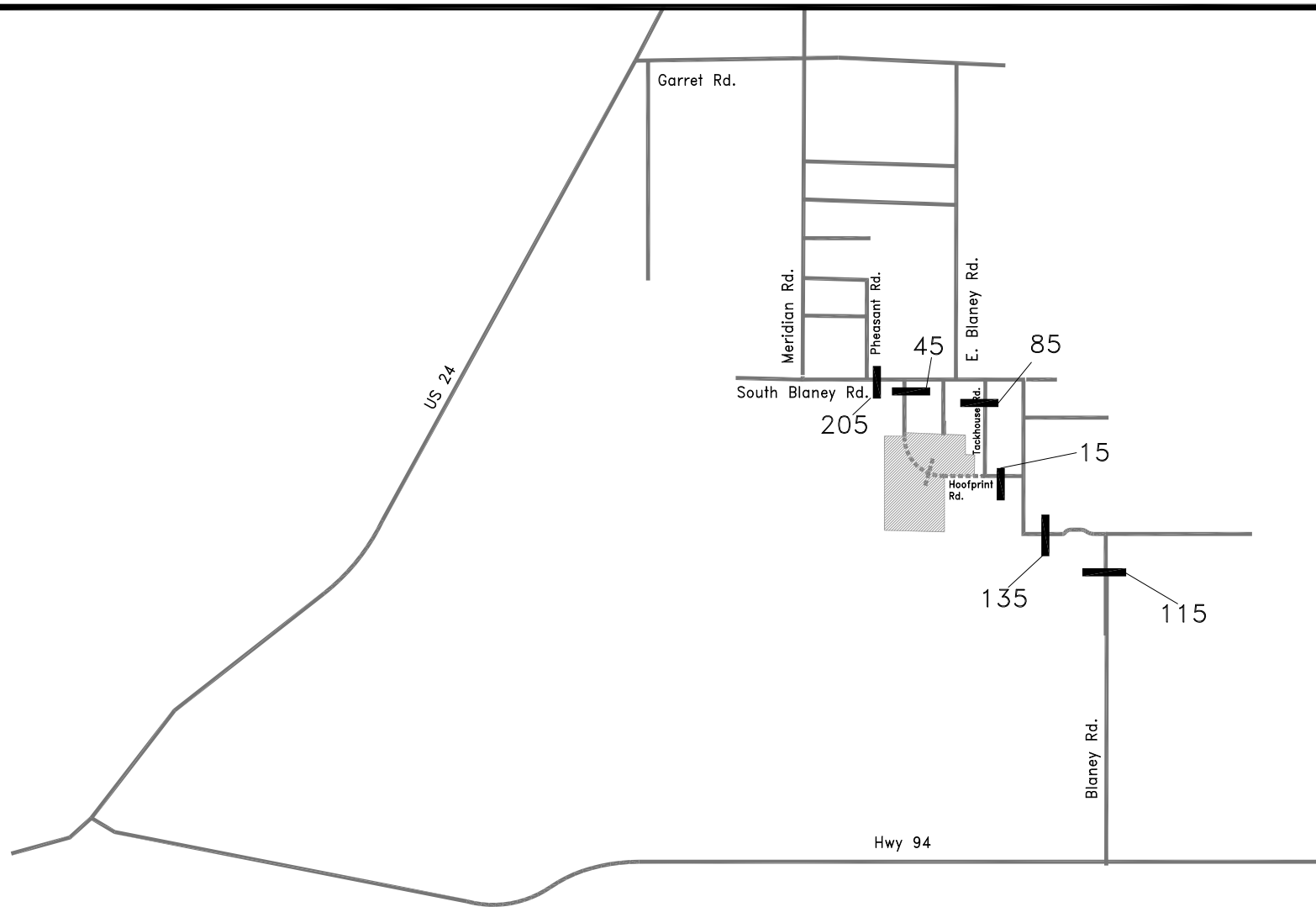
Site Vicinity Map
The Reserve at Corral Bluffs

Figure 1
LSC #114740



Site Plan
The Reserve at Corral Bluffs

Figure 2
LSC #114740



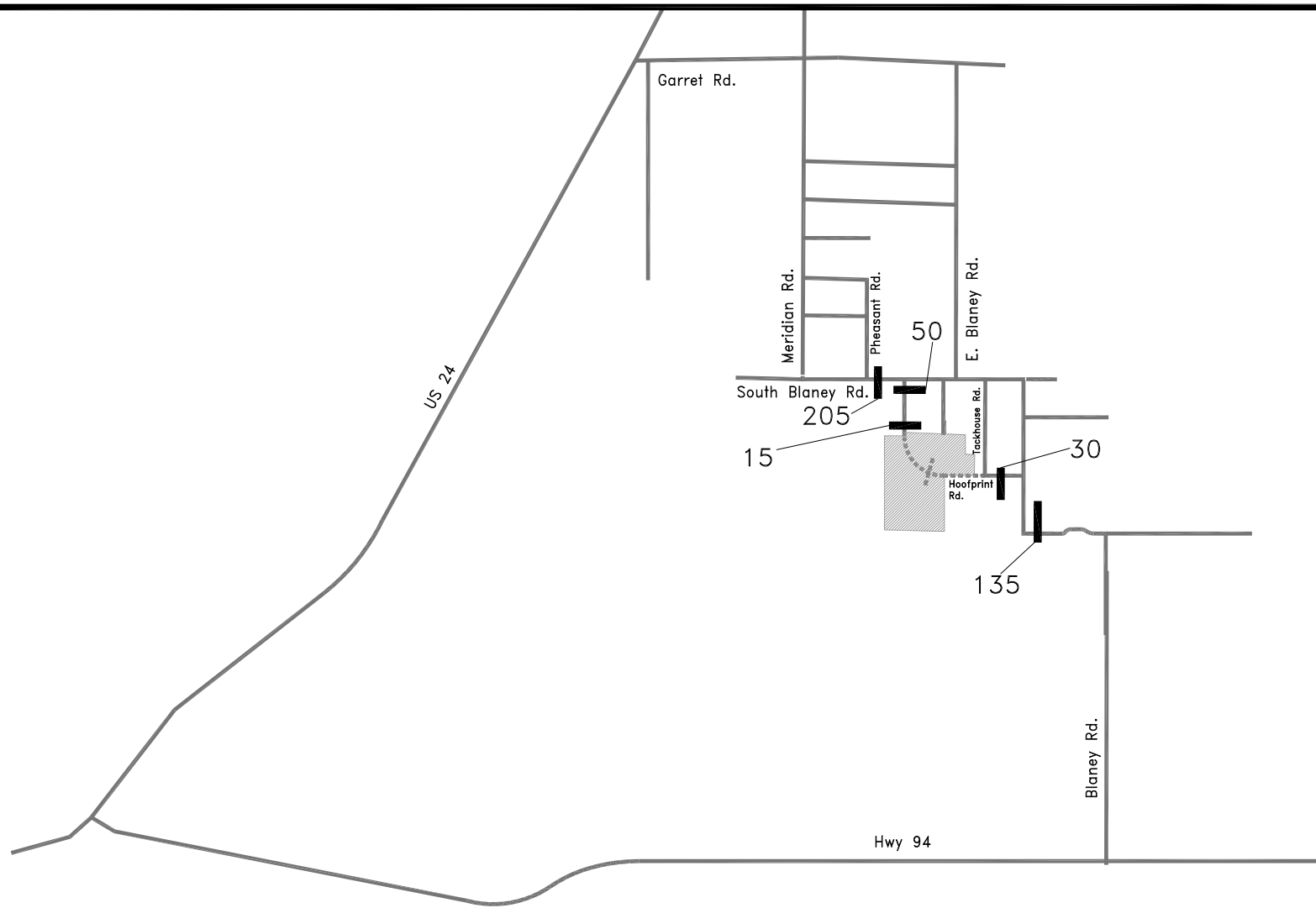
Legend:

205 -Average Daily traffic (vehicles per day) - counts by LSC

Existing Traffic Volumes

The Reserve at Corral Bluffs

Figure 3
LSC #114740



Legend:

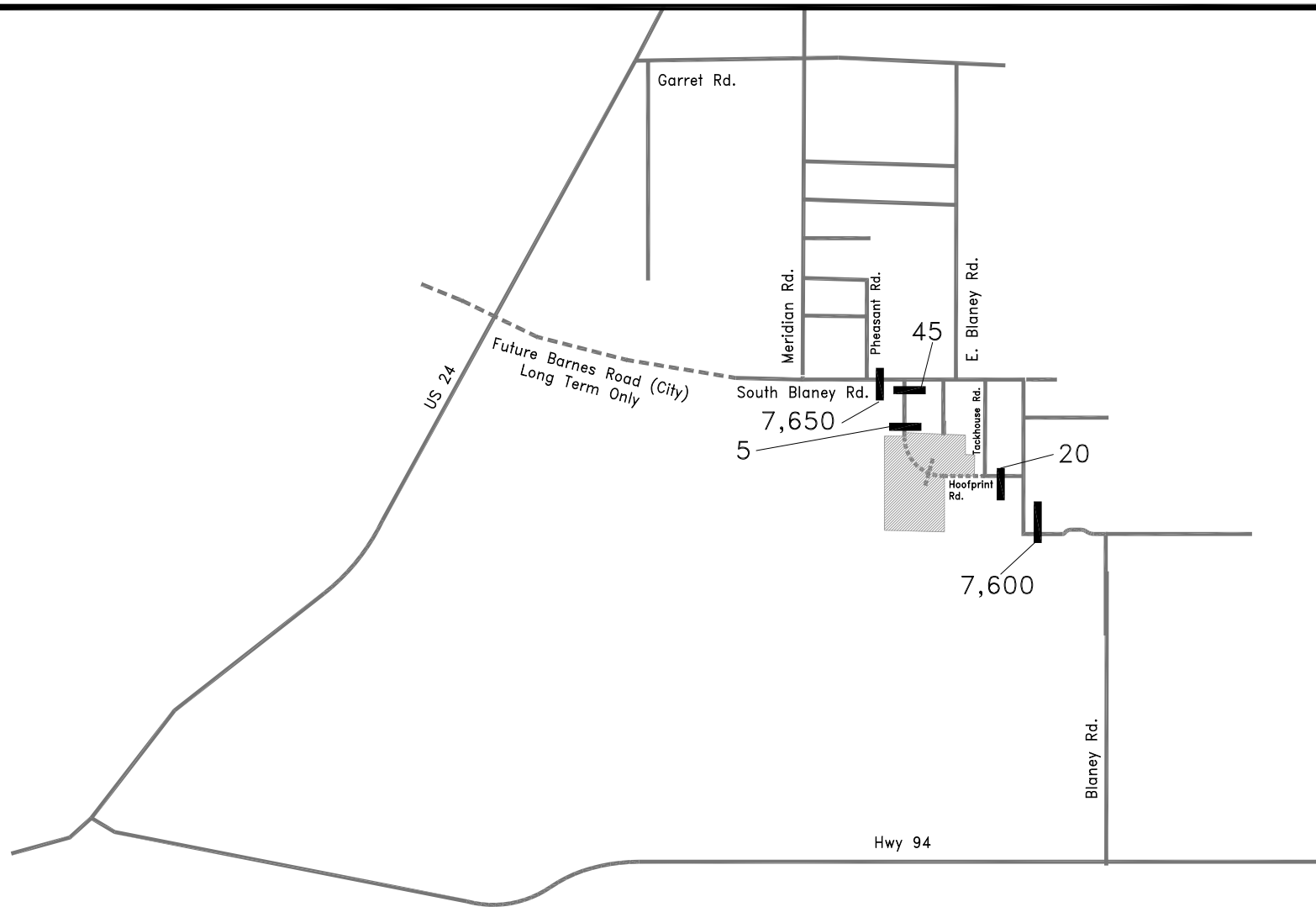
205 -Average Daily traffic (vehicles per day)



Short Term Background Traffic

The Reserve at Corral Bluffs

Figure 4
LSC #114740



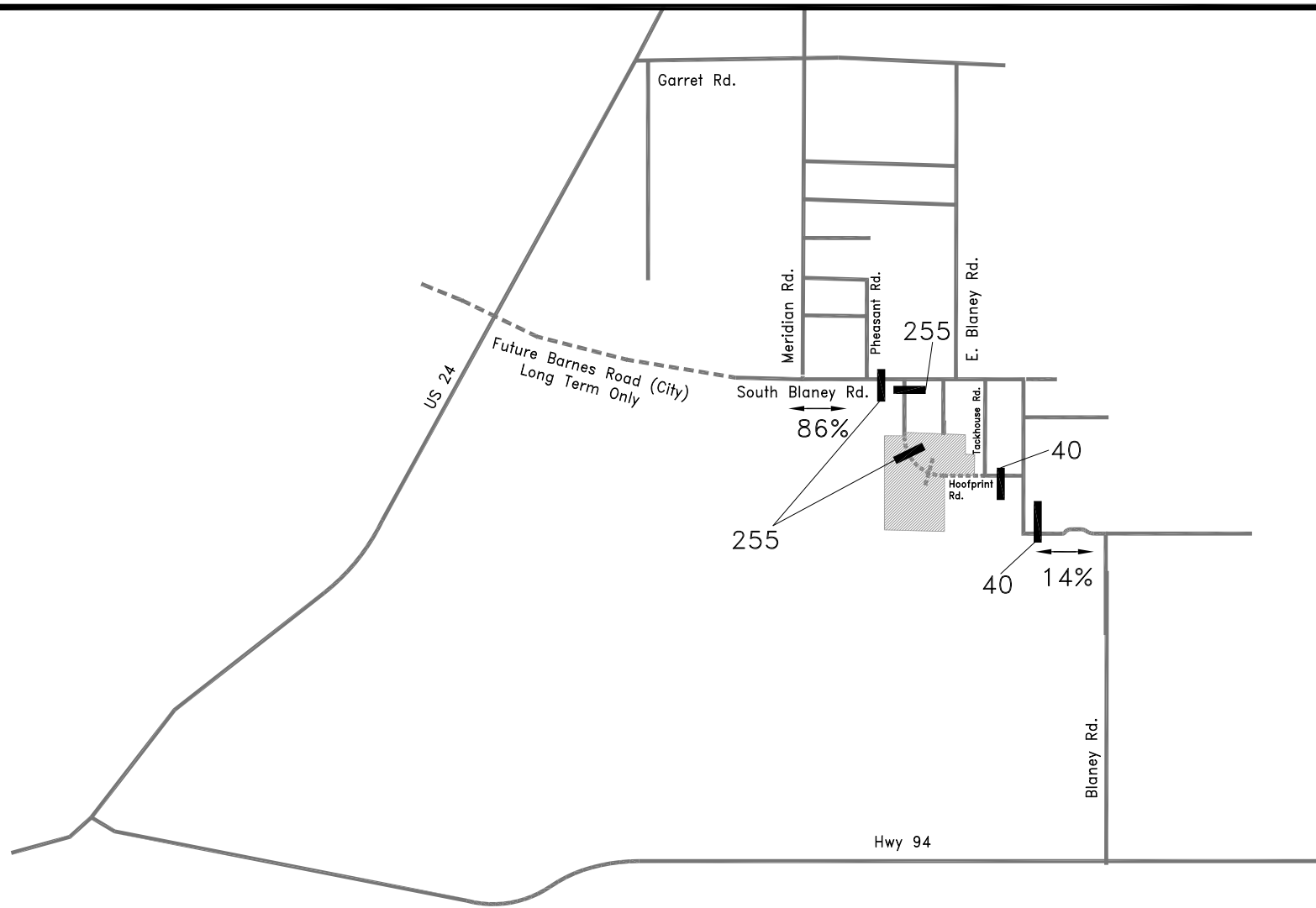
Legend:

7,650 -Average Daily traffic (vehicles per day)

Long Term Background Traffic

The Reserve at Corral Bluffs

Figure 5
LSC #114740



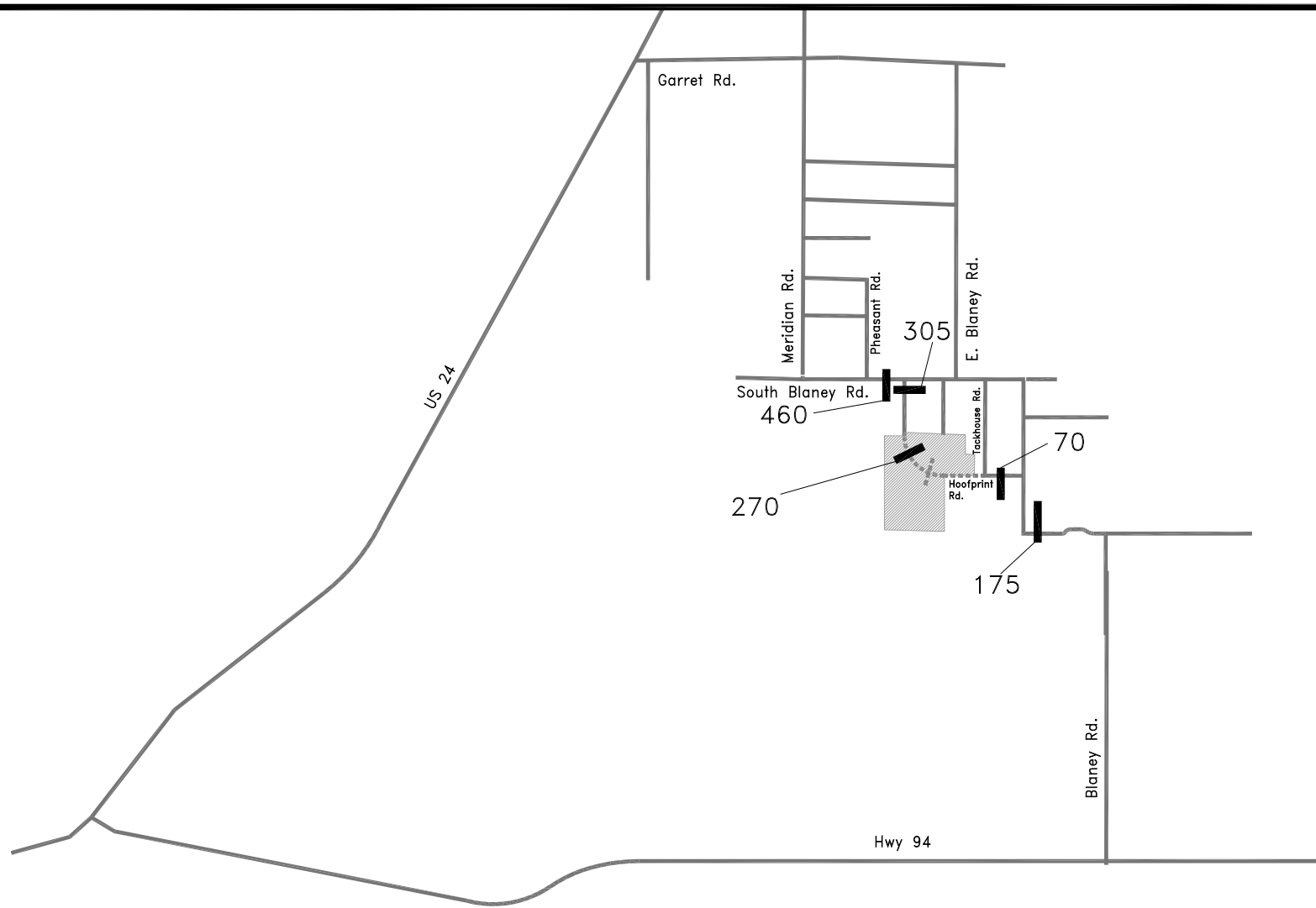
Legend:

255 — Average Daily traffic (vehicles per day)

14% — Estimated directional distribution of site-generated traffic

Directional Distribution and Site-Generated Traffic
The Reserve at Corral Bluffs

Figure 6
LSC #114740



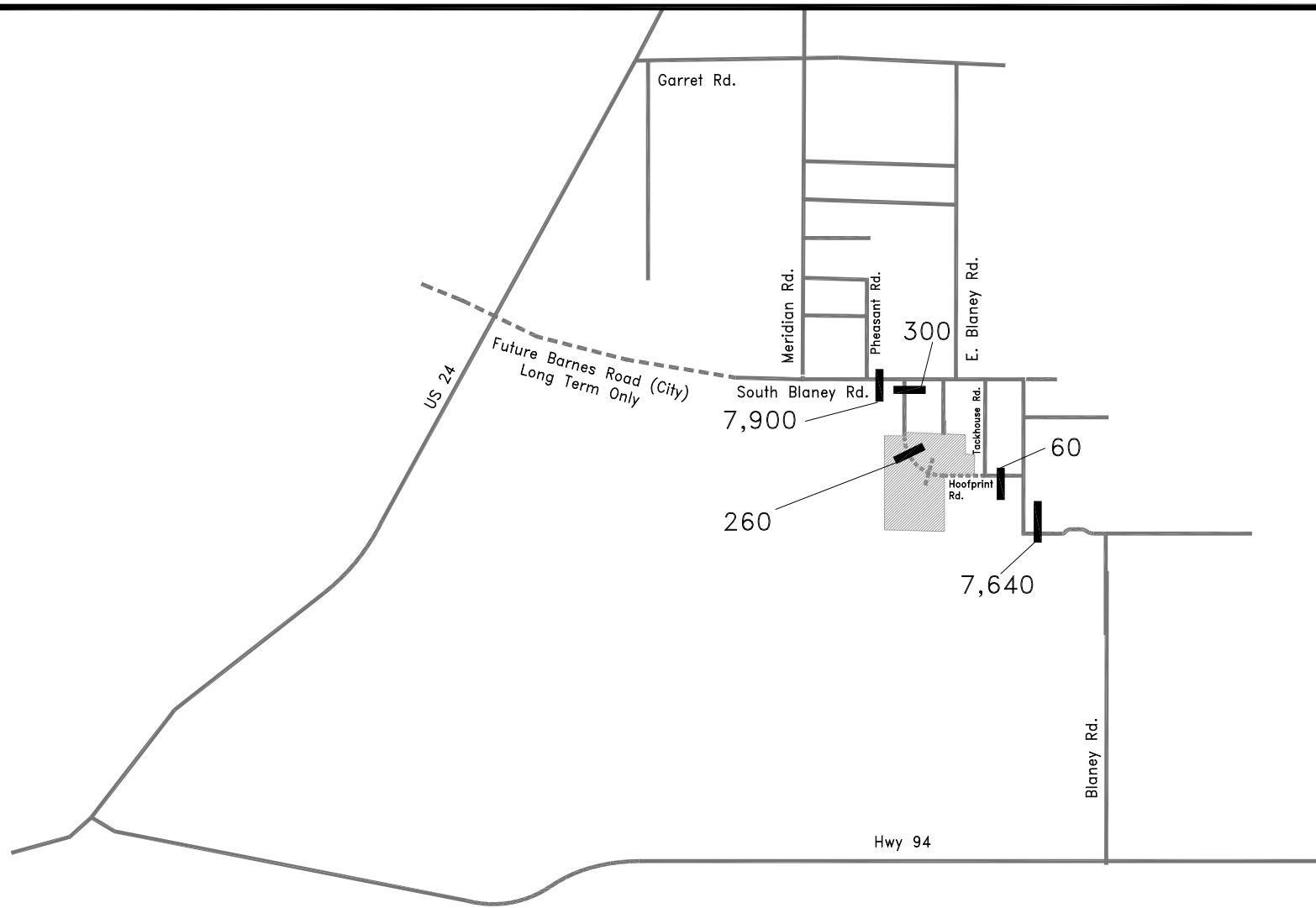
Legend:

175 -Average Daily traffic (vehicles per day)

Short Term Total Traffic

The Reserve at Corral Bluffs

Figure 7
LSC #114740



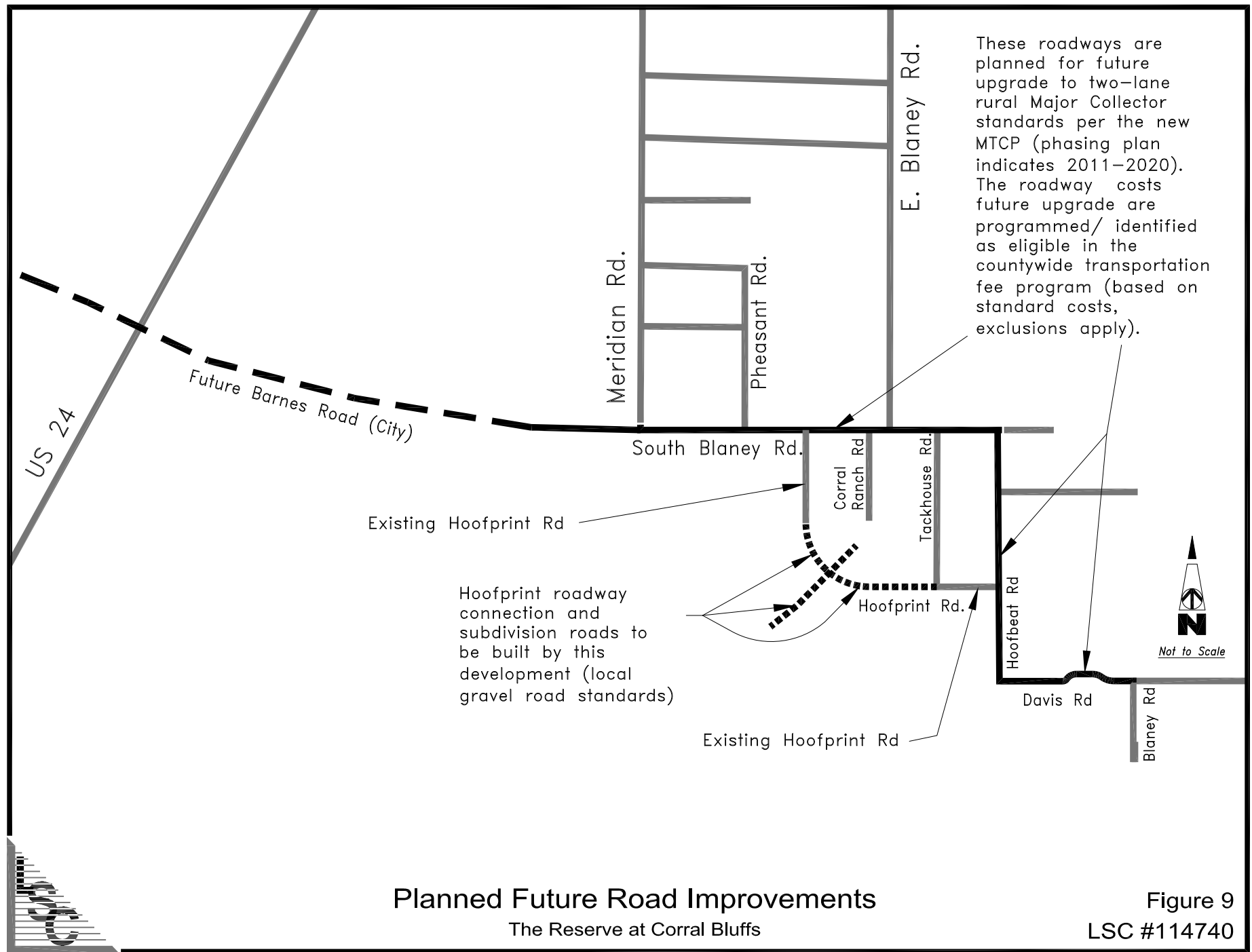
Legend:

7,900 -Average Daily traffic (vehicles per day)



Long Term (2040) Total Traffic
The Reserve at Corral Bluffs

Figure 8
LSC #114740



Planned Future Road Improvements
The Reserve at Corral Bluffs

Figure 9
LSC #114740

Appendix A: Trip Generation Study



Trip Generation Study - Average Daily Traffic

South Blaney Road Residential Area

	Area 1 ⁽¹⁾	Area 2	Area 3	Area 4	Areas 1-4 Combined
Entry/exit point #1 count ⁽²⁾	77.375	66.1	46	135.8	
Entry/exit point #2 count	13.125	n/a	n/a	183.9	
Total Daily Trips (AVG)	90.5	66.1	46	319.7	522.3
Number of Dwelling Units	13	8	10	61	92
Calculated					
Trip Generation Rate	6.96	8.26	4.60	5.24	5.68

Notes:

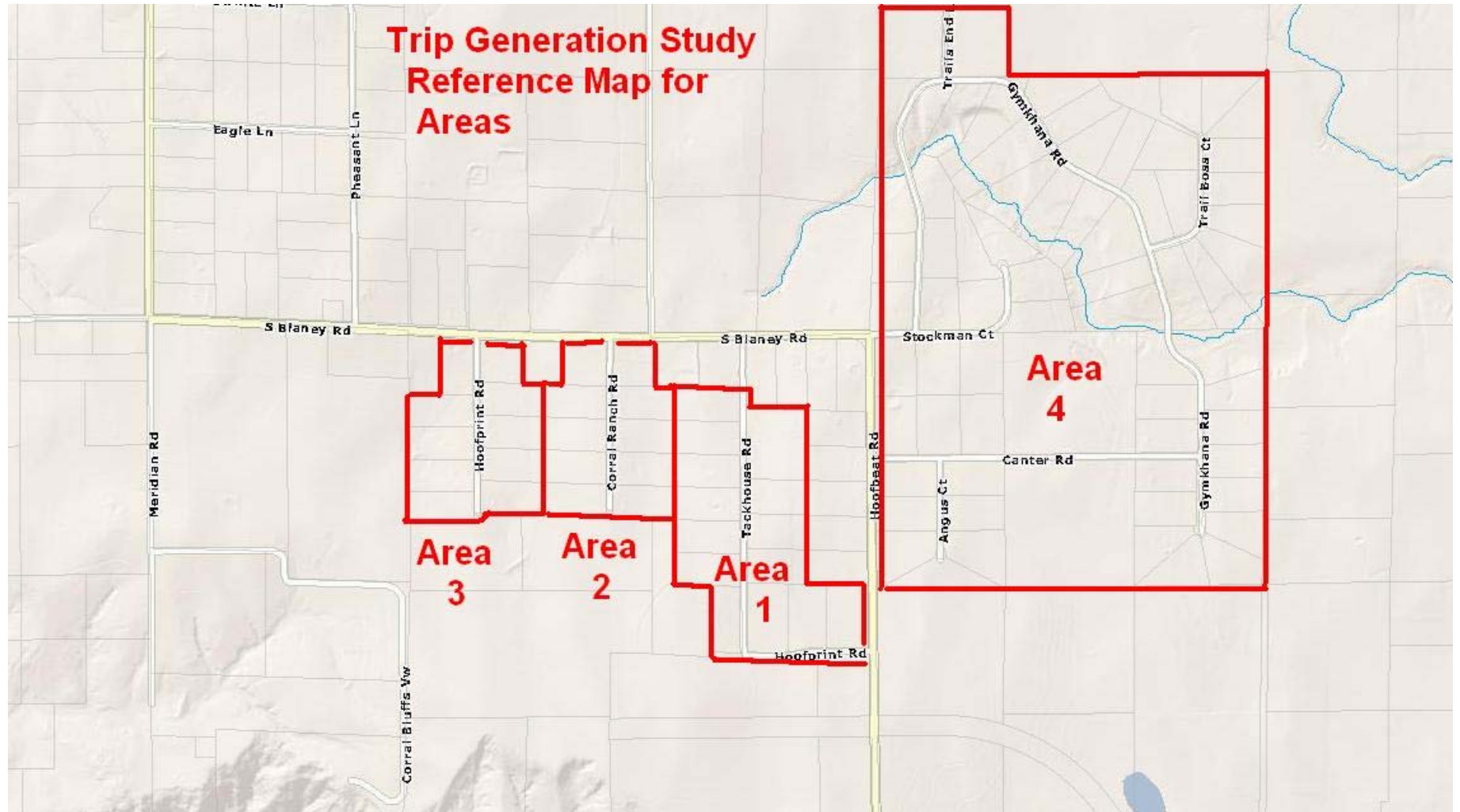
(1) Please refer to attached map for areas

(2) Please refer to attached traffic count data

Weekday Peak Hour Trip Generation Analysis

Area Counted	Street	Count AM	days	Count PM	days	trips per day AM	trips per day PM	dwelling units
Area 4	stockman	15	3	24	4	5.00	6.00	61
	stockman	11	5	20	4	2.20	5.00	
	canter	14	3	17	4	4.67	4.25	
	canter	9	5	12	4	1.80	3.00	
	both	29	3	41	4	9.67	10.25	
	both	20	5	32	4	4.00	8.00	
						13.67	18.25	
Area 3	Hoofprint	3	3	4	4	1.00	1.00	10
	Hoofprint	5	5	6	4	1.00	1.50	
						2.00	2.50	
Area 2	hoofprint	3	3	5	4	1.00	1.25	8
	hoofprint	2	5	5	4	0.40	1.25	
						1.40	2.50	
Area 1	hoofprint	0.5	2	3	3	0.25	1.00	13
	hoofprint	1.25	4	1.25	3	0.31	0.42	
	tackh	5	2	9.3333	3	2.50	3.11	
	tackh	5.75	4	10	3	1.44	3.33	
	both	5.5	2	12.333	3	2.75	4.11	
	both	7	4	11.25	3	1.75	3.75	
						4.50	7.86	
						Total Trips		
						21.57	31.11	92
						Trip Generation Rates		
						0.23	0.34	

Trip Generation Study Reference Map for Areas



LSC Transportation Consultants

516 N. Tejon St.
Colorado Springs, Co 80903
(719) 633-2868

TACKHOUSE RD SO BLANEY RD -VOL
Site Code:
Station ID:

Latitude: 0' 0.000 South

Start Time	05-Sep-11		06-Sep-11		07-Sep-11		08-Sep-11		09-Sep-11		Weekday Average		10-Sep-11		11-Sep-11	
	Northbound	Southbound	Northbound	Southbound	Northbound	Southbound	Northbound	Southbound	Northbound	Southbound	Northbound	Southbound	Northbound	Southbound	Northbound	Southbound
12:00 AM	*	*	*	*	*	*	*	*	*	*	0	0	0	0	0	0
01:00	*	*	*	*	*	*	0	0	0	0	0	0	0	0	0	0
02:00	*	*	*	*	*	*	1	1	0	0	0	0	0	0	0	0
03:00	*	*	*	*	*	*	0	0	0	0	0	0	0	0	1	1
04:00	*	*	*	*	*	*	0	0	2	1	0	0	0	0	0	0
05:00	*	*	*	*	*	*	1	0	2	1	2	0	0	0	1	0
06:00	*	*	*	*	*	*	4	1	2	1	3	1	0	1	0	0
07:00	*	*	*	*	*	*	3	2	5	4	4	1	1	0	2	0
08:00	*	*	*	*	*	*	3	1	3	2	3	2	4	0	0	0
09:00	*	*	*	*	*	*	2	3	2	3	2	3	5	0	2	2
10:00	*	*	*	*	*	*	3	2	3	1	3	2	3	0	1	2
11:00	*	*	*	*	*	*	5	3	4	2	4	2	5	6	1	2
12:00 PM	*	*	*	*	*	*	4	2	3	4	4	4	2	4	2	2
01:00	*	*	*	*	*	*	2	0	4	1	3	4	5	3	2	0
02:00	*	*	*	*	*	*	0	0	1	2	1	1	3	2	4	2
03:00	*	*	*	*	*	*	5	1	7	4	5	2	3	4	2	2
04:00	*	*	*	*	*	*	3	2	2	4	2	4	4	2	2	3
05:00	*	*	*	*	*	*	1	6	2	9	3	7	4	2	1	0
06:00	*	*	*	*	*	*	3	6	2	0	3	3	4	4	4	5
07:00	*	*	*	*	*	*	2	0	1	2	2	3	1	4	2	1
08:00	*	*	*	*	*	*	1	3	0	0	0	1	0	2	0	0
09:00	*	*	*	*	*	*	1	2	0	2	0	1	0	0	1	0
10:00	*	*	*	*	*	*	0	0	0	1	0	1	0	2	0	0
11:00	*	*	*	*	*	*	0	0	0	1	0	0	0	0	0	0
Total	0	0	0	0	19	41	44	45	45	45	45	42	44	41	27	23
Day	0		0		41		89		90		87		85		50	
AM Peak	0		0		19		44		45		45		44		27	
Vol.	0		0		41		89		90		87		85		50	
PM Peak	0		0		19		44		45		45		44		27	
Vol.	0		0		41		89		90		87		85		50	

LSC Transportation Consultants

516 N. Tejon St.
Colorado Springs, Co 80903
(719) 633-2868

TACKHOUSE RD SO BLANEY RD -VOL
Site Code:
Station ID:

Latitude: 0' 0.000 South

Start Time	12-Sep-11		13-Sep-11		14-Sep-11		15-Sep-11		16-Sep-11		17-Sep-11		18-Sep-11	
	Northbound	Southbound	Northbound	Southbound	Northbound	Southbound	Northbound	Southbound	Northbound	Southbound	Northbound	Southbound	Northbound	Southbound
12:00 AM	0	1	0	0	0	0	0	0	0	0	0	0	0	0
01:00	0	0	0	0	0	0	0	0	0	0	0	0	0	0
02:00	0	0	0	0	0	0	0	0	0	0	0	0	0	0
03:00	1	1	1	1	0	1	1	1	0	1	0	1	0	0
04:00	0	0	0	0	0	0	0	0	0	0	0	0	0	0
05:00	1	0	3	0	3	0	2	0	0	2	0	1	0	0
06:00	4	1	3	1	2	1	4	2	0	3	1	4	2	1
07:00	4	2	3	1	4	1	2	1	0	4	2	3	2	1
08:00	5	3	2	1	4	1	2	1	0	3	2	3	2	2
09:00	1	2	2	0	2	4	3	1	0	2	2	2	2	2
10:00	1	2	1	2	0	2	3	1	0	1	2	2	2	2
11:00	2	3	0	1	3	3	3	2	0	2	2	2	2	2
12:00 PM	3	2	1	2	2	2	2	2	0	2	2	2	2	2
01:00	3	5	4	0	1	3	2	1	0	2	2	2	2	2
02:00	1	2	1	2	2	3	0	0	0	1	2	2	2	2
03:00	6	1	2	3	5	2	0	0	0	4	2	2	2	2
04:00	3	3	1	2	0	4	0	0	0	1	3	1	2	2
05:00	8	7	3	4	4	4	0	0	0	5	5	5	5	5
06:00	0	0	4	5	0	0	0	0	0	1	2	2	2	2
07:00	1	9	2	3	0	1	0	0	0	1	4	4	4	4
08:00	1	2	0	4	0	1	0	0	0	0	2	2	2	2
09:00	1	0	1	0	1	1	0	0	0	1	0	1	1	1
10:00	1	2	1	0	1	1	0	0	0	1	1	1	1	1
11:00	0	0	0	0	0	0	0	0	0	0	0	0	0	0
Total	47	47	34	32	34	34	24	12	0	0	37	36	0	0
Day	94	94	66	66	68	68	36	36	0	0	73	73	0	0
AM Peak	08:00	08:00	05:00	10:00	07:00	09:00	07:00	07:00	07:00	07:00	07:00	08:00	07:00	08:00
Vol.	5	3	3	2	4	4	4	2	4	4	4	2	4	2
PM Peak	17:00	19:00	13:00	18:00	15:00	16:00	12:00	12:00	17:00	17:00	17:00	17:00	17:00	17:00
Vol.	8	9	4	5	5	4	2	2	5	5	5	5	5	5

Comb. Total	94	66	109	125	90	160	85	50
ADT	ADT 77		ADT 77		ADT 77		ADT 77	

LSC Transportation Consultants

516 N. Tejon St.
Colorado Springs, Co 80903
(719) 633-2868

Stockman Ct EO Hoofbeat
Site Code:
Station ID:

Latitude: 0' 0.000 South

Start Time	Mon 03-Oct-11	Tue 04-Oct-11	Wed 05-Oct-11	Thu 06-Oct-11	Fri 07-Oct-11	Week Day Average	Sat 08-Oct-11	Sun 09-Oct-11	Week Average
12:00 AM	*	*	0	0	1	0	0	3	1
01:00	*	*	0	0	0	0	2	1	1
02:00	*	*	0	0	0	0	0	0	0
03:00	*	*	1	1	1	1	1	2	1
04:00	*	*	1	2	2	2	2	1	2
05:00	*	*	6	5	3	5	2	1	3
06:00	*	*	13	14	15	14	3	1	9
07:00	*	*	17	14	15	15	4	0	10
08:00	*	*	10	18	13	14	2	5	10
09:00	*	*	11	13	9	11	3	5	8
10:00	*	5	5	10	7	7	9	6	7
11:00	*	7	9	7	10	8	7	9	8
12:00 PM	*	9	4	12	9	8	7	15	9
01:00	*	7	9	13	11	10	6	14	10
02:00	*	9	10	8	22	12	3	14	11
03:00	*	15	20	11	11	14	10	10	13
04:00	*	26	21	22	27	24	7	23	21
05:00	*	18	12	20	21	18	11	8	15
06:00	*	15	18	18	13	16	10	10	14
07:00	*	7	9	7	14	9	6	4	8
08:00	*	2	9	13	9	8	2	2	6
09:00	*	6	4	7	5	6	7	3	5
10:00	*	3	4	1	2	2	4	2	3
11:00	*	1	3	1	1	2	1	1	1
Total	0	130	196	218	221	206	109	140	176

Daily

Date	Total
05-Oct-11	196
06-Oct-11	218
07-Oct-11	221
08-Oct-11	109
09-Oct-11	140
Average	177

516 N. Tejon St.
Colorado Springs, Co 80903
(719) 633-2868

Stockman Ct EO Hoofbeat
Site Code:
Station ID:

Latitude: 0' 0.000 South

Start Time	Mon 10-Oct-11	Tue 11-Oct-11	Wed 12-Oct-11	Thu 13-Oct-11	Fri 14-Oct-11	Week Day Average	Sat 15-Oct-11	Sun 16-Oct-11	Week Average
12:00 AM	0	1	1	2	1	1	*	*	1
01:00	1	0	0	1	1	1	*	*	1
02:00	2	0	0	0	0	0	*	*	0
03:00	1	1	1	1	1	1	*	*	1
04:00	0	0	1	1	1	1	*	*	1
05:00	2	3	4	5	2	3	*	*	3
06:00	8	8	10	10	11	9	*	*	9
07:00	9	18	8	13	7	11	*	*	11
08:00	10	8	7	8	16	10	*	*	10
09:00	11	13	13	11	7	11	*	*	11
10:00	7	17	10	9	5	10	*	*	10
11:00	5	5	16	12	*	10	*	*	10
12:00 PM	10	12	16	10	*	12	*	*	12
01:00	11	6	2	13	*	8	*	*	8
02:00	14	12	24	9	*	15	*	*	15
03:00	16	14	18	9	*	14	*	*	14
04:00	19	19	22	21	*	20	*	*	20
05:00	15	13	19	8	*	14	*	*	14
06:00	16	17	11	14	*	14	*	*	14
07:00	8	8	8	17	*	10	*	*	10
08:00	7	10	5	6	*	7	*	*	7
09:00	4	4	8	6	*	6	*	*	6
10:00	2	3	2	3	*	2	*	*	2
11:00	2	1	0	5	*	2	*	*	2
Total	180	193	206	194	52	192	0	0	192

Daily

Date	Total
10-Oct-11	180
11-Oct-11	193
12-Oct-11	206
13-Oct-11	194
Average	193

Grand Total	180	323	402	412	273	398	109	140	368
-------------	-----	-----	-----	-----	-----	-----	-----	-----	-----

LSC Transportation Consultants

516 N. Tejon St.
Colorado Springs, Co 80903
(719) 633-2868

Canter Rd EO Hoofbeat
Site Code:
Station ID:

Latitude: 0' 0.000 South

Start Time	Mon 03-Oct-11	Tue 04-Oct-11	Wed 05-Oct-11	Thu 06-Oct-11	Fri 07-Oct-11	Week Day Average	Sat 08-Oct-11	Sun 09-Oct-11	Week Average
12:00 AM	*	*	1	2	1	1	1	1	1
01:00	*	*	0	0	0	0	2	4	1
02:00	*	*	0	0	0	0	0	0	0
03:00	*	*	1	1	1	1	0	0	1
04:00	*	*	0	0	0	0	1	1	0
05:00	*	*	2	4	4	3	0	2	2
06:00	*	*	9	9	12	10	0	0	6
07:00	*	*	8	9	9	9	1	2	6
08:00	*	*	8	16	19	14	5	4	10
09:00	*	*	6	3	11	7	3	7	6
10:00	*	1	2	6	4	3	13	2	5
11:00	*	2	6	7	3	4	9	6	6
12:00 PM	*	6	6	7	2	5	10	10	7
01:00	*	5	5	6	8	6	8	6	6
02:00	*	9	6	8	11	8	10	4	8
03:00	*	14	8	7	6	9	10	6	8
04:00	*	14	23	17	13	17	15	4	14
05:00	*	12	10	14	6	10	10	11	10
06:00	*	19	9	12	14	14	16	6	13
07:00	*	5	6	9	6	6	9	9	7
08:00	*	6	4	6	5	5	4	4	5
09:00	*	3	3	6	8	5	5	4	5
10:00	*	5	3	0	4	3	7	1	3
11:00	*	1	2	2	2	2	2	3	2
Total	0	102	128	151	149	142	141	97	132

Daily

Total

Date	Total
05-Oct-11	128
06-Oct-11	151
07-Oct-11	149
08-Oct-11	141
09-Oct-11	97
Average	133

LSC Transportation Consultants

516 N. Tejon St.
Colorado Springs, Co 80903
(719) 633-2868

Canter Rd EO Hoofbeat
Site Code:
Station ID:

Latitude: 0' 0.000 South

Start Time	Mon 10-Oct-11	Tue 11-Oct-11	Wed 12-Oct-11	Thu 13-Oct-11	Fri 14-Oct-11	Week Day Average	Sat 15-Oct-11	Sun 16-Oct-11	Week Average
12:00 AM	1	0	0	0	1	0	*	*	0
01:00	1	0	0	0	0	0	*	*	0
02:00	1	0	0	0	1	0	*	*	0
03:00	1	1	1	0	1	1	*	*	1
04:00	1	1	0	1	1	1	*	*	1
05:00	5	7	6	6	9	7	*	*	7
06:00	6	8	8	4	5	6	*	*	6
07:00	5	8	8	6	7	7	*	*	7
08:00	9	9	8	9	8	9	*	*	9
09:00	9	6	12	8	8	9	*	*	9
10:00	6	1	4	7	4	4	*	*	4
11:00	8	6	3	7	*	6	*	*	6
12:00 PM	6	5	4	9	*	6	*	*	6
01:00	4	7	3	5	*	5	*	*	5
02:00	15	6	12	7	*	10	*	*	10
03:00	8	10	11	13	*	10	*	*	10
04:00	10	16	14	6	*	12	*	*	12
05:00	15	15	8	10	*	12	*	*	12
06:00	6	12	10	10	*	10	*	*	10
07:00	6	9	8	3	*	6	*	*	6
08:00	6	2	5	11	*	6	*	*	6
09:00	5	6	6	4	*	5	*	*	5
10:00	5	5	1	1	*	3	*	*	3
11:00	2	0	2	3	*	2	*	*	2
Total	141	140	134	130	45	137	0	0	137

Daily

Date	Total
10-Oct-11	141
11-Oct-11	140
12-Oct-11	134
13-Oct-11	130
Average	136

Grand Total	141	242	262	281	194	279	141	97	269
-------------	-----	-----	-----	-----	-----	-----	-----	----	-----

LSC Transportation Consultants

516 N. Tejon St.
Colorado Springs, Co 80903
(719) 633-2868

HOOFPRIINT RD SO BLANEY
Site Code:
Station ID:

Latitude: 0' 0.000 South

Start Time	Mon 03-Oct-11	Tue 04-Oct-11	Wed 05-Oct-11	Thu 06-Oct-11	Fri 07-Oct-11	Week Day Average	Sat 08-Oct-11	Sun 09-Oct-11	Week Average
12:00 AM	*	*	0	1	0	0	1	4	1
01:00	*	*	0	0	1	0	0	0	0
02:00	*	*	1	0	0	0	0	1	0
03:00	*	*	2	2	2	2	0	0	1
04:00	*	*	0	0	0	0	2	1	1
05:00	*	*	1	1	1	1	0	0	1
06:00	*	*	4	4	2	3	1	0	2
07:00	*	*	2	1	3	2	4	3	3
08:00	*	*	3	1	3	2	3	2	2
09:00	*	*	4	4	5	4	2	1	3
10:00	*	*	5	3	6	5	4	2	4
11:00	*	3	1	1	3	2	2	4	2
12:00 PM	*	1	6	10	3	5	3	3	4
01:00	*	5	4	6	5	5	4	3	4
02:00	*	3	7	3	3	4	2	6	4
03:00	*	7	5	5	5	6	6	6	6
04:00	*	9	4	7	7	7	2	1	5
05:00	*	3	8	7	10	7	1	3	5
06:00	*	6	5	10	6	7	4	1	5
07:00	*	5	4	6	0	4	6	4	4
08:00	*	2	3	1	2	2	4	2	2
09:00	*	2	2	1	4	2	3	0	2
10:00	*	2	2	2	4	2	0	0	2
11:00	*	2	0	0	1	1	2	3	1
Total	0	50	73	76	76	73	56	50	64

Daily

Total

Date	
05-Oct-11	73
06-Oct-11	76
07-Oct-11	76
08-Oct-11	56
09-Oct-11	50
Average	66

LSC Transportation Consultants

516 N. Tejon St.
Colorado Springs, Co 80903
(719) 633-2868

HOOFPRIINT RD SO BLANEY
Site Code:
Station ID:

Latitude: 0' 0.000 South

Start Time	Mon 10-Oct-11	Tue 11-Oct-11	Wed 12-Oct-11	Thu 13-Oct-11	Fri 14-Oct-11	Week Day Average	Sat 15-Oct-11	Sun 16-Oct-11	Week Average
12:00 AM	0	0	0	0	0	0	*	*	0
01:00	0	0	0	0	0	0	*	*	0
02:00	0	0	0	0	0	0	*	*	0
03:00	2	2	2	1	2	2	*	*	2
04:00	0	0	0	1	0	0	*	*	0
05:00	1	1	1	1	1	1	*	*	1
06:00	2	3	2	2	2	2	*	*	2
07:00	2	1	3	2	3	2	*	*	2
08:00	0	2	2	2	3	2	*	*	2
09:00	5	2	3	1	3	3	*	*	3
10:00	4	3	3	5	3	4	*	*	4
11:00	5	4	9	6	*	6	*	*	6
12:00 PM	1	2	4	1	*	2	*	*	2
01:00	6	1	2	5	*	4	*	*	4
02:00	4	7	1	9	*	5	*	*	5
03:00	4	6	4	8	*	6	*	*	6
04:00	2	0	7	6	*	4	*	*	4
05:00	1	6	5	4	*	4	*	*	4
06:00	6	3	2	8	*	5	*	*	5
07:00	2	10	2	5	*	5	*	*	5
08:00	3	5	3	4	*	4	*	*	4
09:00	5	3	3	1	*	3	*	*	3
10:00	2	3	1	3	*	2	*	*	2
11:00	2	2	2	2	*	2	*	*	2
Total	59	66	61	77	17	68	0	0	68

Daily

Date	Total
10-Oct-11	59
11-Oct-11	66
12-Oct-11	61
13-Oct-11	77
Average	66

Grand Total	59	116	134	153	93	141	56	50	132
-------------	----	-----	-----	-----	----	-----	----	----	-----

LSC Transportation Consultants

516 N. Tejon St.
Colorado Springs, Co 80903
(719) 633-2868

Hoofprint Rd SO Blaney
Site Code:
Station ID:

Latitude: 0' 0.000 South

Start Time	Mon 03-Oct-11	Tue 04-Oct-11	Wed 05-Oct-11	Thu 06-Oct-11	Fri 07-Oct-11	Week Day Average	Sat 08-Oct-11	Sun 09-Oct-11	Week Average
12:00 AM	*	*	0	0	0	0	0	0	0
01:00	*	*	0	0	0	0	0	0	0
02:00	*	*	0	0	0	0	0	0	0
03:00	*	*	0	0	0	0	0	0	0
04:00	*	*	0	0	0	0	0	0	0
05:00	*	*	1	3	6	3	3	0	3
06:00	*	*	6	5	3	5	2	0	3
07:00	*	*	2	3	2	2	0	1	2
08:00	*	*	2	2	5	3	3	1	3
09:00	*	*	1	3	1	2	2	5	2
10:00	*	0	2	3	1	2	4	3	2
11:00	*	1	0	1	1	1	6	3	2
12:00 PM	*	3	5	6	3	4	3	3	4
01:00	*	3	0	5	6	4	2	4	3
02:00	*	0	5	3	2	2	5	2	3
03:00	*	9	1	2	2	4	0	1	2
04:00	*	6	2	5	3	4	3	3	4
05:00	*	2	3	4	5	4	3	3	3
06:00	*	4	5	4	3	4	1	4	4
07:00	*	3	6	6	1	4	1	5	4
08:00	*	0	4	1	2	2	0	1	1
09:00	*	0	1	2	0	1	0	0	0
10:00	*	0	0	0	2	0	0	0	0
11:00	*	0	1	0	1	0	0	0	0
Total	0	31	47	58	49	51	38	39	45

Daily

Total

Date	Total
05-Oct-11	47
06-Oct-11	58
07-Oct-11	49
08-Oct-11	38
09-Oct-11	39
Average	46

LSC Transportation Consultants

516 N. Tejon St.
Colorado Springs, Co 80903
(719) 633-2868

Hoofprint Rd SO Blaney
Site Code:
Station ID:

Latitude: 0' 0.000 South

Start Time	Mon 10-Oct-11	Tue 11-Oct-11	Wed 12-Oct-11	Thu 13-Oct-11	Fri 14-Oct-11	Week Day Average	Sat 15-Oct-11	Sun 16-Oct-11	Week Average
12:00 AM	0	0	0	0	0	0	*	*	0
01:00	0	0	0	0	0	0	*	*	0
02:00	0	0	0	0	0	0	*	*	0
03:00	0	0	0	0	0	0	*	*	0
04:00	0	0	0	1	1	0	*	*	0
05:00	3	3	2	0	3	2	*	*	2
06:00	3	6	6	5	3	5	*	*	5
07:00	4	1	1	1	0	1	*	*	1
08:00	0	2	2	1	0	1	*	*	1
09:00	0	1	3	2	0	1	*	*	1
10:00	0	1	4	2	1	2	*	*	2
11:00	5	0	0	2	*	2	*	*	2
12:00 PM	2	3	3	2	*	2	*	*	2
01:00	8	1	3	0	*	3	*	*	3
02:00	0	7	3	4	*	4	*	*	4
03:00	4	5	1	3	*	3	*	*	3
04:00	7	4	1	2	*	4	*	*	4
05:00	4	9	4	5	*	6	*	*	6
06:00	7	1	10	6	*	6	*	*	6
07:00	2	1	2	3	*	2	*	*	2
08:00	0	0	3	1	*	1	*	*	1
09:00	1	1	0	3	*	1	*	*	1
10:00	0	0	1	0	*	0	*	*	0
11:00	1	0	1	0	*	0	*	*	0
Total	51	46	50	43	8	46	0	0	46

Daily

Date	Total
10-Oct-11	51
11-Oct-11	46
12-Oct-11	50
13-Oct-11	43
Average	48

Grand Total	51	77	97	101	57	97	38	39	91
-------------	----	----	----	-----	----	----	----	----	----

Traffic Count Data Sheets



LSC Transportation Consultants

516 N. Tejon St.
Colorado Springs, Co 80903
(719) 633-2868

Blaney Rd SO Davis Rd -VOL
Site Code:
Station ID:

Latitude: 0° 0.000 South

Start Time	05-Sep-11		Tue		Wed		Thu		Fri		Sat		Sun		Week Average	
	Northbound	Southbound	Northbound	Southbound	Northbound	Southbound	Northbound	Southbound	Northbound	Southbound	Northbound	Southbound	Northbound	Southbound	Northbound	Southbound
12:00 AM	*	*	*	*	*	*	2	0	2	0	0	0	1	0	1	0
01:00	*	*	*	*	*	*	1	0	0	0	1	0	0	0	0	0
02:00	*	*	*	*	*	*	0	0	0	0	0	0	0	0	0	0
03:00	*	*	*	*	*	*	0	0	0	0	1	0	0	0	0	0
04:00	*	*	*	*	*	*	0	0	0	0	0	0	0	0	0	0
05:00	*	*	*	*	*	*	0	1	0	1	0	0	0	0	0	0
06:00	*	*	*	*	*	*	0	1	0	0	0	0	0	0	0	0
07:00	*	*	*	*	*	*	3	7	2	2	0	4	0	1	1	4
08:00	*	*	*	*	*	*	8	10	3	5	2	3	0	0	3	5
09:00	*	*	*	*	*	*	2	6	2	2	3	2	0	2	2	2
10:00	*	*	*	*	*	*	3	4	1	4	5	4	0	4	4	4
11:00	*	*	*	*	*	*	4	7	6	5	6	6	1	3	4	5
12:00 PM	*	*	*	*	*	*	2	3	7	1	6	5	6	3	5	3
01:00	*	*	*	*	*	*	4	7	1	3	3	7	3	1	3	4
02:00	*	*	*	*	*	*	10	7	2	3	6	2	2	2	5	3
03:00	*	*	*	*	*	*	3	10	0	7	4	4	2	1	3	6
04:00	*	*	*	*	*	*	4	4	4	2	2	2	4	3	3	3
05:00	*	*	*	*	*	*	10	9	6	4	5	2	0	0	6	4
06:00	*	*	*	*	*	*	6	2	7	2	0	1	2	2	4	2
07:00	*	*	*	*	*	*	3	5	1	1	4	1	3	0	3	2
08:00	*	*	*	*	*	*	3	0	5	2	2	1	1	1	3	1
09:00	*	*	*	*	*	*	0	1	1	5	1	2	1	1	1	2
10:00	*	*	*	*	*	*	2	0	3	1	3	0	0	0	2	0
11:00	*	*	*	*	*	*	1	0	1	1	1	0	1	1	1	0
12:00	*	*	*	*	*	*	0	0	0	0	0	0	0	0	0	0
Lane	0	0	0	0	0	0	0	0	0	0	0	0	0	0	0	0
Day	0	0	0	0	0	0	72	83	54	57	52	48	33	25	52	51
AM Peak			07:00		07:00		11:00		11:00		11:00		11:00		103	
Vol.			8		10		7		7		6		6		5	
PM Peak			14:00		14:00		17:00		14:00		13:00		16:00		14:00	
Vol.			8		10		7		7		6		7		6	

LSC Transportation Consultants

516 N. Tejon St.
Colorado Springs, Co 80903
(719) 633-2868

Blaney Rd SO Davis Rd -VOL
Site Code:
Station ID:

Latitude: 0' 0.000 South

Start Time	12-Sep-11		Tue		Wed		Thu		Fri		Sat		Sun		Week Average	
	Northbound	Southbound	Northbound	Southbound	Northbound	Southbound	Northbound	Southbound	Northbound	Southbound	Northbound	Southbound	Northbound	Southbound	Northbound	Southbound
12:00 AM	0	0	0	0	0	0	0	0	0	0	0	0	0	0	0	0
01:00	0	0	0	0	0	0	0	0	0	0	0	0	0	0	0	0
02:00	0	0	0	0	0	0	0	0	0	0	0	0	0	0	0	0
03:00	0	0	0	0	0	0	0	0	0	0	0	0	0	0	0	0
04:00	0	0	0	0	0	0	0	0	0	0	0	0	0	0	0	0
05:00	0	1	0	0	0	0	0	0	0	0	0	0	0	0	0	1
06:00	1	8	2	6	0	0	0	0	0	0	0	0	0	1	4	1
07:00	2	9	3	12	0	0	0	0	0	0	0	0	0	1	5	5
08:00	3	1	3	5	0	0	0	0	0	0	0	0	0	2	2	2
09:00	3	0	3	1	0	0	0	0	0	0	0	0	0	1	2	2
10:00	0	1	2	5	0	0	0	0	0	0	0	0	0	0	2	2
11:00	5	3	6	3	0	0	0	0	0	0	0	0	0	3	2	2
12:00 PM	5	6	6	5	0	0	0	0	0	0	0	0	0	3	3	3
01:00	6	2	7	4	0	0	0	0	0	0	0	0	0	4	2	2
02:00	6	7	7	9	0	0	0	0	0	0	0	0	0	4	6	6
03:00	3	7	4	3	0	0	0	0	0	0	0	0	0	2	3	3
04:00	6	1	6	3	0	0	0	0	0	0	0	0	0	4	2	2
05:00	4	1	3	3	0	0	0	0	0	0	0	0	0	2	1	1
06:00	3	5	0	0	0	0	0	0	0	0	0	0	0	1	2	2
07:00	1	0	0	0	0	0	0	0	0	0	0	0	0	0	0	0
08:00	2	1	0	0	0	0	0	0	0	0	0	0	0	1	1	0
09:00	2	1	0	0	0	0	0	0	0	0	0	0	0	1	0	0
10:00	1	0	0	0	0	0	0	0	0	0	0	0	0	0	0	0
11:00	0	0	0	0	0	0	0	0	0	0	0	0	0	0	0	0
Lane	53	64	49	63	0	0	0	0	0	0	0	0	0	0	30	36
Day	117	117	112	112	0	0	0	0	0	0	0	0	0	0	66	66
AM Peak	11:00	07:00	11:00	07:00											11:00	07:00
Vol.	5	9	6	12											3	5
PM Peak	13:00	14:00	13:00	14:00											13:00	14:00
Vol.	6	10	7	9											4	6

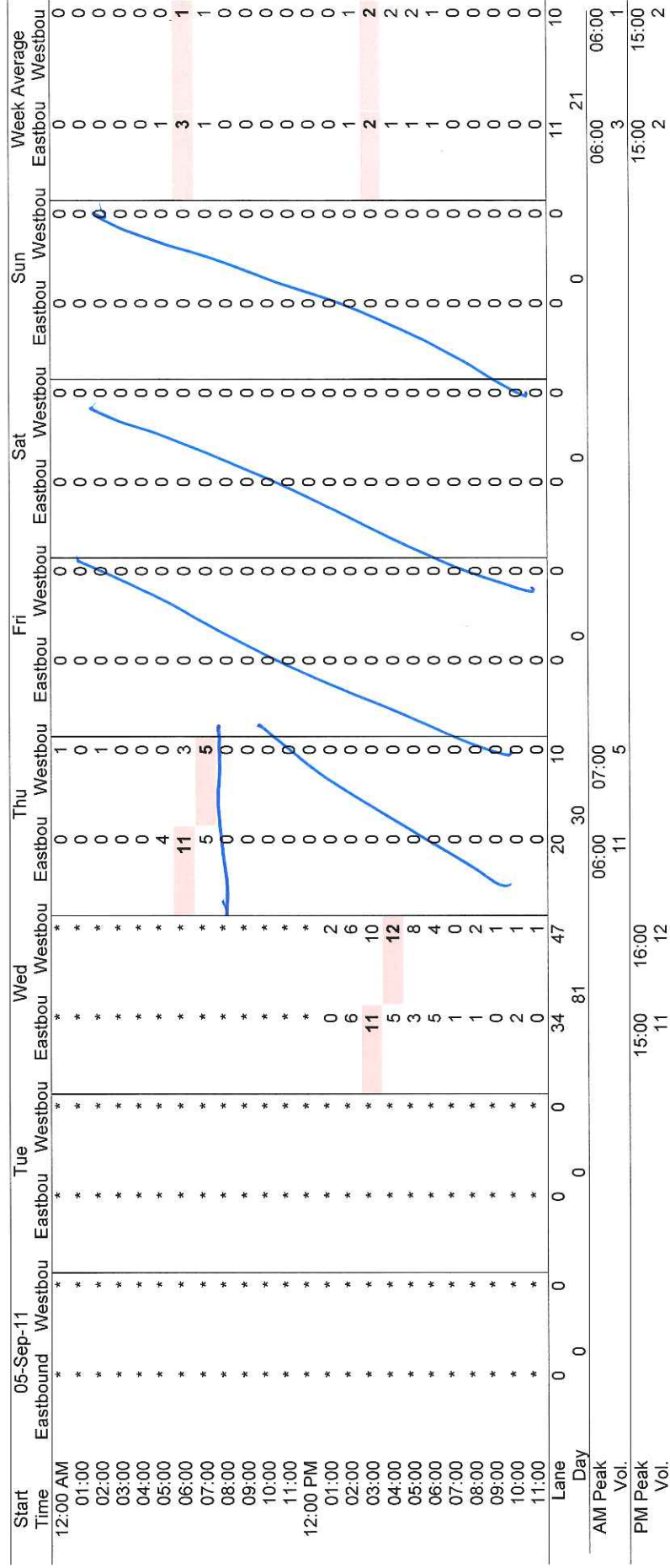
Comb. Total	117	112	65	155	111	100	58	169
ADT	ADT 93		ADT 93		ADT 93		ADT 93	

LSC Transportation Consultants

516 N. Tejon St.
Colorado Springs, Co 80903
(719) 633-2868

Davis Rd EO Hoofbeat -VOL
Site Code:
Station ID:

Latitude: 0° 0.000 South



LSC Transportation Consultants

516 N. Tejon St.
Colorado Springs, Co 80903
(719) 633-2868

Davis Rd EO Hoofbeat -VOL
Site Code:
Station ID:

Latitude: 0' 0.000 South

Start Time	12-Sep-11		Tue		Wed		Thu		Fri		Sat		Sun		Week Average	
	Eastbound	Westbound	Eastbound	Westbound	Eastbound	Westbound	Eastbound	Westbound	Eastbound	Westbound	Eastbound	Westbound	Eastbound	Westbound	Eastbound	Westbound
12:00 AM	0	0	0	0	0	0	0	0	*	*	*	*	*	*	0	0
01:00	0	0	0	0	0	0	0	0	*	*	*	*	*	*	0	0
02:00	0	0	0	0	0	0	0	0	*	*	*	*	*	*	0	0
03:00	0	0	0	0	0	0	0	0	*	*	*	*	*	*	0	0
04:00	0	0	0	0	0	0	0	0	*	*	*	*	*	*	0	0
05:00	0	0	0	0	0	0	0	0	*	*	*	*	*	*	0	0
06:00	0	0	0	0	0	0	0	0	*	*	*	*	*	*	0	0
07:00	0	0	0	0	0	0	0	0	*	*	*	*	*	*	0	0
08:00	0	0	0	0	0	0	0	0	*	*	*	*	*	*	0	0
09:00	0	0	0	0	0	0	0	0	*	*	*	*	*	*	0	0
10:00	0	0	0	0	0	0	0	0	*	*	*	*	*	*	0	0
11:00	0	0	0	0	0	0	0	0	*	*	*	*	*	*	0	0
12:00 PM	0	0	0	0	0	0	0	0	*	*	*	*	*	*	0	0
01:00	0	0	0	0	0	0	*	*	*	*	*	*	*	*	0	0
02:00	0	0	0	0	0	0	*	*	*	*	*	*	*	*	0	0
03:00	0	0	0	0	0	0	*	*	*	*	*	*	*	*	0	0
04:00	0	0	0	0	0	0	*	*	*	*	*	*	*	*	0	0
05:00	0	0	0	0	0	0	*	*	*	*	*	*	*	*	0	0
06:00	0	0	0	0	0	0	*	*	*	*	*	*	*	*	0	0
07:00	0	0	0	0	0	0	*	*	*	*	*	*	*	*	0	0
08:00	0	0	0	0	0	0	*	*	*	*	*	*	*	*	0	0
09:00	0	0	0	0	0	0	*	*	*	*	*	*	*	*	0	0
10:00	0	0	0	0	0	0	*	*	*	*	*	*	*	*	0	0
11:00	0	0	0	0	0	0	*	*	*	*	*	*	*	*	0	0
Lane	0	0	0	0	0	0	0	0	0	0	0	0	0	0	0	0
Day	0	0	0	0	0	0	0	0	0	0	0	0	0	0	0	0
AM Peak Vol.																
PM Peak Vol.																

Comb. Total	0	0	81	30	0	21
ADT	ADT 4		AADT 4			

Page 1

Hoofprint Rd WO Hoofbeat Rd-VOL
Site Code:
Station ID:

Latitude: 0' 0.000 South

[illegible]

LSC Transportation Consultants

516 N. Tejon St.
Colorado Springs, Co 80903
(719) 633-2868

Hoofprint Rd WO Hoofbeat Rd-VOL
Site Code:
Station ID:

Latitude: 0° 0' 0.000 South

Start Time	12-Sep-11		Tue		Wed		Thu		Fri		Sat		Sun		Week Average	
	Eastbou	Westbou	Eastbou	Westbou	Eastbou	Westbou	Eastbou	Westbou	Eastbou	Westbou	Eastbou	Westbou	Eastbou	Westbou	Eastbou	Westbou
12:00 AM	0	0	0	0	0	0	0	0	*	*	*	*	*	*	0	0
01:00	0	0	0	0	0	0	0	0	*	*	*	*	*	*	0	0
02:00	0	0	0	0	0	0	0	0	*	*	*	*	*	*	0	0
03:00	0	0	0	0	0	0	0	0	*	*	*	*	*	*	0	0
04:00	0	0	0	0	0	0	0	0	*	*	*	*	*	*	0	0
05:00	0	0	0	0	0	0	0	0	*	*	*	*	*	*	0	0
06:00	0	0	0	0	0	0	0	0	*	*	*	*	*	*	0	0
07:00	0	0	0	0	0	0	0	0	*	*	*	*	*	*	0	0
08:00	1	0	0	0	0	0	0	0	*	*	*	*	*	*	1	0
09:00	0	0	0	0	0	0	0	0	*	*	*	*	*	*	0	0
10:00	0	0	0	0	0	0	0	0	*	*	*	*	*	*	0	0
11:00	0	0	0	0	0	0	0	0	*	*	*	*	*	*	0	0
12:00 PM	1	0	0	0	0	0	0	0	*	*	*	*	*	*	0	0
01:00	1	0	0	0	0	0	0	0	*	*	*	*	*	*	1	0
02:00	0	0	0	0	0	0	0	0	*	*	*	*	*	*	0	0
03:00	0	0	0	0	0	0	0	0	*	*	*	*	*	*	0	0
04:00	0	0	0	0	0	0	0	0	*	*	*	*	*	*	0	0
05:00	1	0	0	0	0	0	0	0	*	*	*	*	*	*	0	0
06:00	0	0	0	0	0	0	0	0	*	*	*	*	*	*	0	0
07:00	2	0	0	0	0	0	0	0	*	*	*	*	*	*	0	0
08:00	0	0	0	0	0	0	0	0	*	*	*	*	*	*	0	0
09:00	0	0	0	0	0	0	0	0	*	*	*	*	*	*	0	0
10:00	0	0	0	0	0	0	0	0	*	*	*	*	*	*	0	0
11:00	0	0	0	0	0	0	0	0	*	*	*	*	*	*	0	0
Lane	9	19	4	4	7	11	6	6	0	0	0	0	0	0	5	9
Day	08:00		08:00		09:00		06:00		08:00		08:00		08:00		08:00	
AM Peak	1	1	2	2	2	2	1	1	0	0	0	0	0	0	1	1
Vol.	19:00		15:00		13:00		12:00		13:00		13:00		13:00		13:00	
PM Peak	2	2	1	2	1	1	1	1	0	0	0	0	0	0	1	1
Vol.	19:00		15:00		13:00		12:00		13:00		13:00		13:00		13:00	

Comb. Total 19 8 25 16 16 7 14 20

ADT ADT 12 AADT 12

LSC Transportation Consultants

516 N. Tejon St.
Colorado Springs, Co 80903
(719) 633-2868

Tackhouse Rd SO Blaney Rd -VOL
Site Code:
Station ID:

Latitude: 0° 0.000 South

Start Time	05-Sep-11		Tue		Wed		Thu		Fri		Sat		Sun		Week Average	
	Northbound	Southbound	Northbound	Southbound	Northbound	Southbound	Northbound	Southbound	Northbound	Southbound	Northbound	Southbound	Northbound	Southbound	Northbound	Southbound
12:00 AM	*	*	*	*	*	*	*	*	*	*	*	*	*	*	0	0
01:00	*	*	*	*	*	*	*	*	*	*	*	*	*	*	0	0
02:00	*	*	*	*	*	*	*	*	*	*	*	*	*	*	0	0
03:00	*	*	*	*	*	*	*	*	*	*	*	*	*	*	0	0
04:00	*	*	*	*	*	*	*	*	*	*	*	*	*	*	0	0
05:00	*	*	*	*	*	*	*	*	*	*	*	*	*	*	0	0
06:00	*	*	*	*	*	*	*	*	*	*	*	*	*	*	1	1
07:00	*	*	*	*	*	*	3	2	5	1	0	0	2	0	3	0
08:00	*	*	*	*	*	*	3	1	2	3	0	0	0	1	2	1
09:00	*	*	*	*	*	*	2	3	2	3	5	0	2	2	3	2
10:00	*	*	*	*	*	*	3	2	3	1	4	2	1	2	2	2
11:00	*	*	*	*	*	*	5	3	4	2	6	1	2	4	3	3
12:00 PM	*	*	*	*	*	*	4	2	3	2	4	1	2	2	2	3
01:00	*	*	*	*	*	*	2	5	4	5	3	2	0	2	3	3
02:00	*	*	*	*	*	*	0	0	1	2	3	4	4	2	2	2
03:00	*	*	*	*	*	*	5	1	7	3	4	2	2	2	4	3
04:00	*	*	*	*	*	*	3	6	2	4	4	2	2	3	3	4
05:00	*	*	*	*	*	*	1	7	2	2	4	1	1	3	3	4
06:00	*	*	*	*	*	*	3	6	2	4	4	4	4	5	3	4
07:00	*	*	*	*	*	*	2	0	1	1	4	2	2	1	2	3
08:00	*	*	*	*	*	*	1	3	0	2	4	0	0	0	0	1
09:00	*	*	*	*	*	*	1	2	0	0	2	1	1	0	0	1
10:00	*	*	*	*	*	*	0	0	0	0	2	0	0	0	0	1
11:00	*	*	*	*	*	*	0	0	0	0	0	0	0	0	0	0
Lane	0	0	0	0	19	22	44	45	45	45	44	41	27	23	39	38
Day	0		0		41		89		90		85		50		77	
AM Peak Vol.					17:00 19:00		11:00 15:00		07:00 09:00		09:00 11:00		07:00 09:00		11:00 15:00	
PM Peak Vol.					5 6		5 5		3 7		5 5		2 4		4 4	

LSC Transportation Consultants

516 N. Tejon St.
Colorado Springs, Co 80903
(719) 633-2868

Tackhouse Rd SO Blaney Rd -VOL
Site Code:
Station ID:

Latitude: 0' 0.000 South

Start Time	12-Sep-11		Tue		Wed		Thu		Fri		Sat		Sun		Week Average	
	Northbound	Southbound	Northbound	Southbound	Northbound	Southbound	Northbound	Southbound	Northbound	Southbound	Northbound	Southbound	Northbound	Southbound	Northbound	Southbound
12:00 AM	0	1	0	0	0	0	0	0	*	*	*	*	*	*	0	0
01:00	0	0	0	0	0	0	0	0	*	*	*	*	*	*	0	0
02:00	0	0	0	0	0	0	0	0	*	*	*	*	*	*	0	0
03:00	1	1	1	1	0	2	1	1	*	*	*	*	*	*	1	1
04:00	0	0	0	0	0	0	0	0	*	*	*	*	*	*	0	0
05:00	1	0	3	0	3	0	2	0	*	*	*	*	*	*	2	0
06:00	4	1	3	1	2	1	2	0	*	*	*	*	*	*	3	1
07:00	4	2	3	1	4	0	4	2	*	*	*	*	*	*	4	1
08:00	5	3	2	1	4	1	2	1	*	*	*	*	*	*	3	2
09:00	1	1	2	0	2	4	3	1	*	*	*	*	*	*	2	2
10:00	1	2	1	2	0	2	3	1	*	*	*	*	*	*	1	2
11:00	2	3	0	1	3	3	3	2	*	*	*	*	*	*	2	2
12:00 PM	3	2	1	2	2	1	2	2	*	*	*	*	*	*	2	2
01:00	3	5	4	0	2	3	2	1	*	*	*	*	*	*	2	2
02:00	1	2	1	2	1	3	*	*	*	*	*	*	*	*	1	2
03:00	6	1	2	3	5	2	*	*	*	*	*	*	*	*	4	2
04:00	3	3	1	2	0	4	*	*	*	*	*	*	*	*	1	3
05:00	8	7	3	4	4	4	*	*	*	*	*	*	*	*	5	5
06:00	0	0	4	5	0	0	*	*	*	*	*	*	*	*	1	2
07:00	1	9	2	3	0	1	*	*	*	*	*	*	*	*	1	4
08:00	1	2	0	4	0	1	*	*	*	*	*	*	*	*	0	2
09:00	1	0	1	1	1	1	*	*	*	*	*	*	*	*	1	0
10:00	1	2	0	0	1	1	*	*	*	*	*	*	*	*	1	1
11:00	0	0	0	0	0	0	*	*	*	*	*	*	*	*	0	0
Lane	47	47	34	32	34	34	24	12	0	0	0	0	0	0	37	36
Day	94	94	66	66	68	68	36	36	0	0	0	0	0	0	73	73
AM Peak	08:00	08:00	05:00	10:00	07:00	09:00	07:00	07:00							07:00	08:00
Vol.	5	3	3	2	4	4	4	2							4	2
PM Peak	17:00	19:00	13:00	18:00	15:00	16:00	12:00	12:00							17:00	17:00
Vol.	8	9	4	5	5	4	2	2							5	5

Comb. Total	94	66	109	125	90	85	50	150
ADT	ADT 77		ADT 77		ADT 77		ADT 77	

516 N. Tejon St.
Colorado Springs, Co 80903
(719) 633-2868

S Blaney Rd EO Pheasant-VOL
Site Code:
Station ID:

Latitude: 0' 0.000 Undefined

Start Time	05-Sep-11		Tue		Wed		Thu		Fri		Sat		Sun		Week Average	
	Eastbound	Westbound	Eastbound	Westbound	Eastbound	Westbound	Eastbound	Westbound	Eastbound	Westbound	Eastbound	Westbound	Eastbound	Westbound	Eastbound	Westbound
12:00 AM	*	*	*	*	*	*	1	0	0	0	0	0	1	0	0	0
01:00	*	*	*	*	*	*	0	0	0	0	2	0	0	0	0	0
02:00	*	*	*	*	*	*	1	0	0	0	1	0	2	1	1	0
03:00	*	*	*	*	*	*	0	1	1	1	2	1	1	1	1	1
04:00	*	*	*	*	*	*	0	0	0	0	0	0	0	0	0	0
05:00	*	*	*	*	*	*	3	4	3	4	0	0	0	0	2	2
06:00	*	*	*	*	*	*	3	12	5	10	2	2	0	0	2	6
07:00	*	*	*	*	*	*	6	13	7	13	3	7	2	4	4	9
08:00	*	*	*	*	*	*	8	13	3	13	9	7	4	8	6	10
09:00	*	*	*	*	*	*	5	6	5	4	8	8	2	4	4	8
10:00	*	*	*	*	*	*	6	8	4	3	4	8	3	4	4	6
11:00	*	*	*	*	*	*	7	8	12	10	10	8	4	7	7	8
12:00 PM	*	*	*	*	*	*	5	7	5	6	12	6	3	7	6	6
01:00	*	*	*	*	*	*	8	5	5	4	8	4	8	7	7	4
02:00	*	*	*	*	*	*	5	8	5	4	6	2	9	7	5	5
03:00	*	*	*	*	*	*	5	11	6	4	8	2	7	7	8	8
04:00	*	*	*	*	*	*	15	12	11	6	5	5	5	4	8	7
05:00	*	*	*	*	*	*	18	8	10	6	12	6	6	12	13	5
06:00	*	*	*	*	*	*	14	6	17	1	8	3	9	12	7	5
07:00	*	*	*	*	*	*	9	2	6	9	5	4	10	4	8	5
08:00	*	*	*	*	*	*	5	6	8	2	13	5	9	3	5	4
09:00	*	*	*	*	*	*	6	6	5	4	8	1	2	1	4	4
10:00	*	*	*	*	*	*	4	0	5	2	3	4	2	3	3	2
11:00	*	*	*	*	*	*	6	0	5	1	4	3	3	0	5	1
12:00	*	*	*	*	*	*	1	1	3	1	1	2	1	0	2	1
Lane	0	0	0	0	37	68	136	129	121	112	119	94	86	79	114	103
Day	0	0	0	0	105	265	265	265	233	213	213	213	165	165	217	217
AM Peak Vol.					17:00 15	08:00 8	08:00 13	07:00 13	07:00 7	07:00 13	11:00 10	09:00 8	08:00 4	09:00 8	11:00 7	08:00 10
PM Peak Vol.					15:00 11	16:00 18	15:00 12	15:00 12	17:00 17	18:00 9	19:00 13	20:00 8	18:00 10	17:00 12	17:00 13	15:00 8

LSC Transportation Consultants

516 N. Tejon St.
Colorado Springs, Co 80903
(719) 633-2868

S Blaney Rd EO Pheasant-VOL
Site Code:
Station ID:

Latitude: 0' 0.000 Undefined

Start Time	12-Sep-11		Tue		Wed		Thu		Fri		Sat		Sun		Week Average	
	Eastbound	Westbound	Eastbound	Westbound	Eastbound	Westbound	Eastbound	Westbound	Eastbound	Westbound	Eastbound	Westbound	Eastbound	Westbound	Eastbound	Westbound
12:00 AM	2	0	0	0	0	0	0	0	*	*	*	*	*	*	0	0
01:00	0	1	0	0	0	0	0	0	*	*	*	*	*	*	0	0
02:00	0	0	0	0	1	0	0	0	*	*	*	*	*	*	0	0
03:00	0	1	0	1	0	1	0	1	*	*	*	*	*	*	0	1
04:00	0	4	0	2	0	2	0	2	*	*	*	*	*	*	0	2
05:00	2	3	1	4	1	2	2	2	*	*	*	*	*	*	2	3
06:00	4	8	6	8	8	11	5	12	*	*	*	*	*	*	6	10
07:00	3	9	4	10	4	12	4	5	*	*	*	*	*	*	4	9
08:00	4	9	2	8	5	7	7	9	*	*	*	*	*	*	4	8
09:00	1	3	2	1	6	6	3	3	*	*	*	*	*	*	3	3
10:00	4	3	2	6	7	6	6	3	*	*	*	*	*	*	5	4
11:00	4	4	6	6	1	3	3	2	*	*	*	*	*	*	4	4
12:00 PM	8	4	9	3	3	5	2	6	*	*	*	*	*	*	6	4
01:00	7	7	3	4	7	4	5	2	*	*	*	*	*	*	6	4
02:00	6	4	9	5	3	5	*	*	*	*	*	*	*	*	6	5
03:00	12	8	11	8	9	6	*	*	*	*	*	*	*	*	11	7
04:00	15	6	9	5	4	2	*	*	*	*	*	*	*	*	9	4
05:00	10	6	15	9	4	2	*	*	*	*	*	*	*	*	11	6
06:00	6	3	12	4	5	5	*	*	*	*	*	*	*	*	8	4
07:00	5	6	5	3	4	2	*	*	*	*	*	*	*	*	5	4
08:00	4	2	2	1	3	1	*	*	*	*	*	*	*	*	3	1
09:00	2	1	4	0	2	1	*	*	*	*	*	*	*	*	3	1
10:00	3	0	2	0	5	1	*	*	*	*	*	*	*	*	3	0
11:00	1	0	2	1	1	0	*	*	*	*	*	*	*	*	1	0
Lane	103	91	109	89	88	86	37	46	0	0	0	0	0	0	100	84
Day	194		198		174		83		0		0		0		184	
AM Peak	06:00	07:00	06:00	07:00	06:00	07:00	08:00	06:00	06:00		06:00		06:00		06:00	
Vol.	4	9	6	10	8	12	7	12	6		6		10		10	
PM Peak	16:00	15:00	17:00	17:00	15:00	15:00	13:00	12:00	15:00		15:00		15:00		15:00	
Vol.	15	8	15	9	9	6	5	6	11		11		7		7	

Comb. Total 194 198 279 348 233 213 165 401

ADT ADT 206 AADT 206

LSC TRANSPORTATION CONSULTANTS, INC.



516 North Tejon Street
Colorado Springs, CO 80903
(719) 633-2868
FAX (719) 633-5430
E-mail: lsc@lscs.com

May 31, 2012

Mr. Howard Kunstle
Corral Ranches Development Company
6 South Tjon, Suite 515
Colorado Springs, CO 80903

RE: The Reserve at Corral Bluffs
Report Correction
LSC #114740

Dear Mr. Kunstle:

We wish to correct an inadvertent error in the Updated Transportation Memorandum dated May 1, 2012. Item 2 in the Conclusions/Recommendations section currently states:

2. **Traffic Impacts:** This project is projected to add about 147 vehicles per day to both Hoofprint Road just south of South Blaney Road and South Blaney Road just west of Hoofprint Road. This projected increase in daily traffic volume is based on the application of the locally-derived trip generation rates from the LSC trip generation study in the vicinity.

This paragraph *should read* as follows in its entirety:

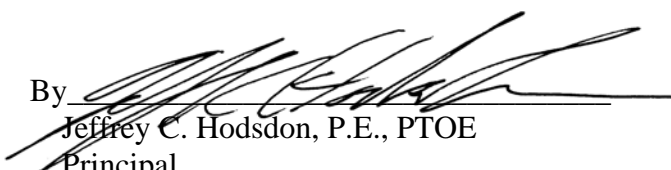
2. **Traffic Impacts:** This project is projected to add about 255 vehicles per day to both Hoofprint Road just south of South Blaney Road and South Blaney Road just west of Hoofprint Road.

We apologize for any inconvenience this may have caused.

Sincerely,

LSC TRANSPORTATION CONSULTANTS, INC.

By


Jeffrey C. Hodsdon, P.E., PTOE
Principal

JCH:bjwb