

GRADING AND EROSION CONTROL PLAN

GRADING DETAILS SHEET

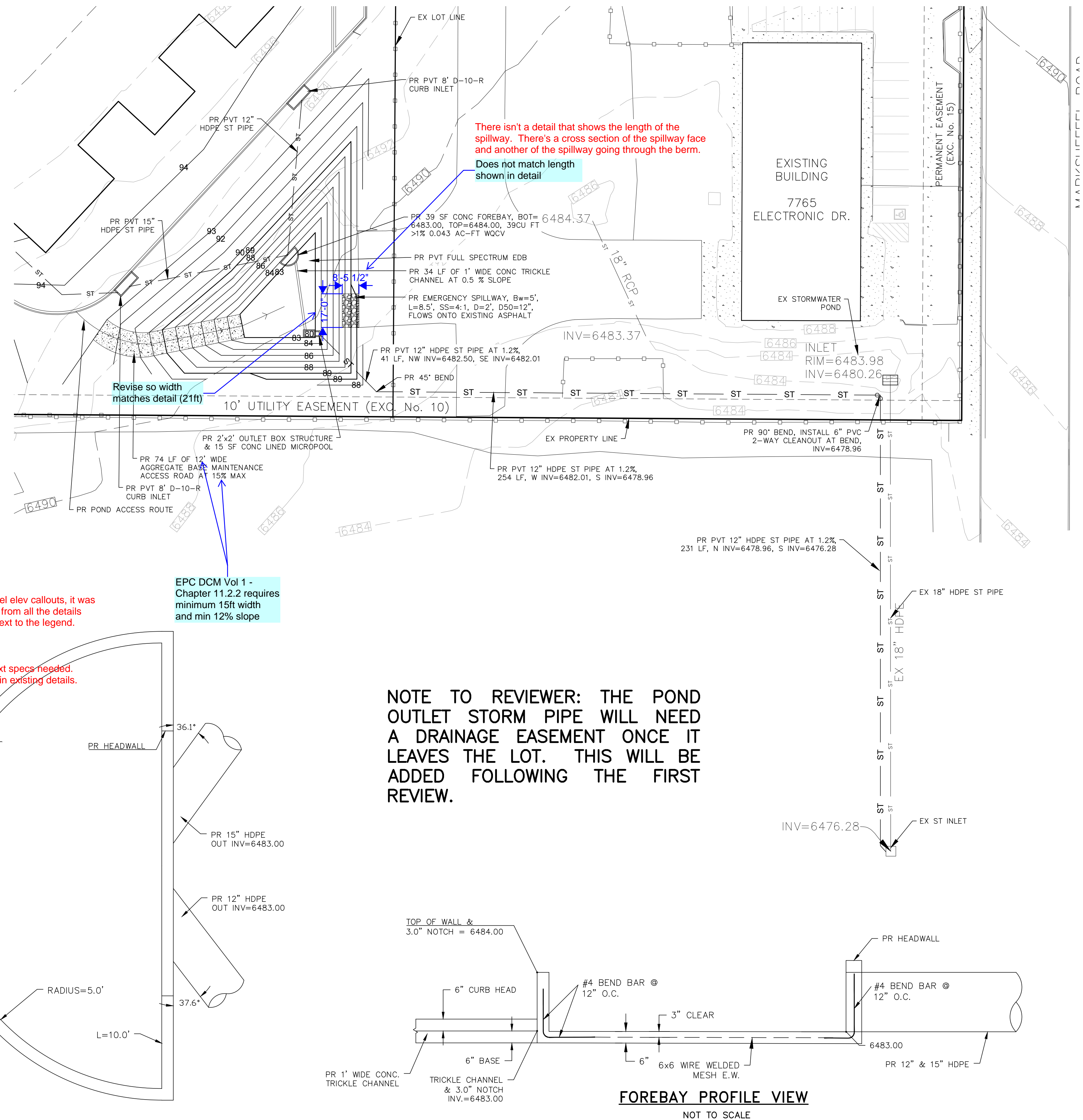
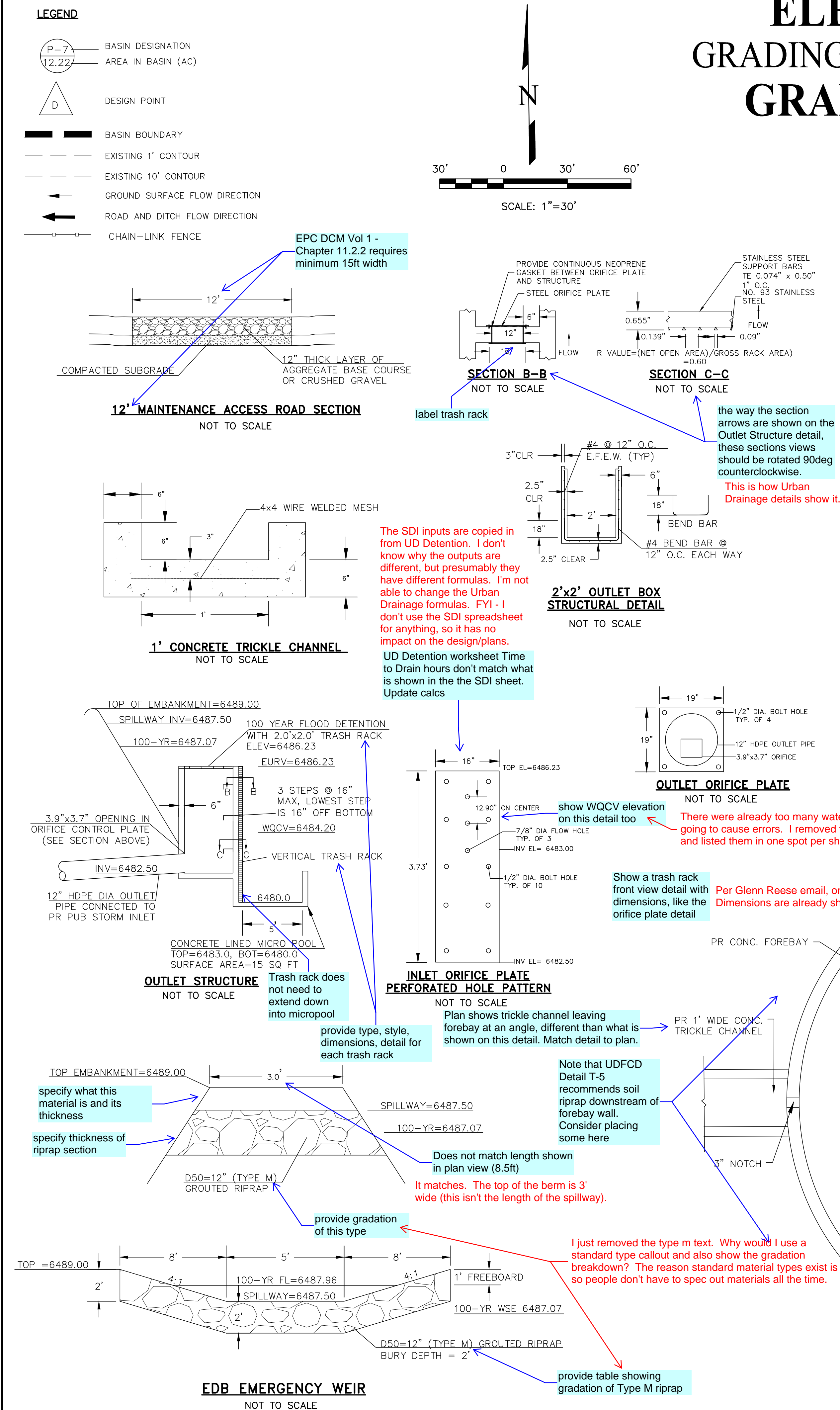
MARCH 2020

NOTES


1. ALL HDPE STORM PIPE IS TO BE SMOOTH INTERIOR PIPE.

BENCHMARKS

#5 REBAR WITH ORANGE PLASTIC CAP MARKED "CSAM, LLC PLS 32439", FLUSH WITH GROUND - ELEV.=6513.85 (NAVD-1988) [NORTHWEST PROPERTY CORNER]



NOTE TO REVIEWER: THE POND
OUTLET STORM PIPE WILL NEED
A DRAINAGE EASEMENT ONCE IT
LEAVES THE LOT. THIS WILL BE
ADDED FOLLOWING THE FIRST
REVIEW.

DESIGNED BY	DLF	<p>ELECTRONIC STORAGE</p> <p>PROPOSED DRAINAGE MAP</p> <p>PROPOSED DRAINAGE MAP</p>	<p>721 S. 23RD STREET COLORADO SPRINGS, CO 80904</p> <p>OFFICE: 719-635-6422 FAX: 719-635-6426 www.tresinc.com</p>	 <p>Terra Nova Engineering, Inc. Creative Civil Engineering</p>	<p>PREPARED FOR:</p> <p>D. STEFANO—BUILDING &... ATTN: DAVID STEFANO 520 W 21ST ST, G-2 #710 NORFOLK, CA 92351 757.333.3144</p>	<p>UNTIL SUCH TIME AS THESE PLANS HAVE BEEN REVIEWED AND APPROVED BY THE APPROPRIATE REVIEWING AGENCIES, TERRA NOVA ENGINEERING, INC. ACCEPTS NO LIABILITY FOR THEIR USE ONLY FOR THE PURPOSES DESIGNATED BY WRITTEN AUTHORIZATION.</p>	<p>DATE</p> <p>DESCRIPTION</p> <p>NO.</p>
DRAWN BY	DLF						
CHECKED BY	LD						
AS SHOWN	N/A						
DATE	1971.00						

BENCHMARKS

#5 REBAR WITH ORANGE PLASTIC CAP MARKED "CSAM, LLC PLS 32439", FLUSH WITH GROUND - ELEV.=6513.85 (NAVD-1988) [NORTHWEST PROPERTY CORNER]

LEGEND

EXISTING CONTOURS - MINOR	---	6132	---
EXISTING CONTOURS - MAJOR	---	6130	---
GRADE & DIRECTION	---	2.2%	---
PROPOSED CONTOUR	---	62	---
PROPOSED	---	PR	---
EXISTING	---	EX	---
WATER LINE	---	W	---
SEWER LINE	---	SS	---
STORM LINE	---	ST	---
OVERHEAD ELECTRICAL LINE	---	OE	---
CHAIN LINK FENCE	---	CL	---
FIRE HYDRANT	---	FD	---
CONCRETE EDGE	---	CE	---
FINISHED GROUND	---	FG	---
FINISHED SURFACE	---	FS	---
FLOWLINE	---	FL	---
SPOT ELEVATION	---	SE	---
ASPHALT EDGE	---	AE	---
LOW POINT	---	LP	---
HIGH POINT	---	HP	---
EXISTING ELEVATION	---	12.00*	---
EXISTING SPOT GRADE	---	X EX 7314.00	---
PROPOSED SPOT GRADE	---	X 7314.00	---
CONSTRUCTION SITE BOUNDARY & AREA OF SOIL DISTURBANCE	---	---	---
CUT FILL AREA BOUNDARY	---	---	---

NOTES

1. SEDIMENT CONTROL LOGS MAY BE SUBSTITUTED FOR SILT FENCE AND VICE VERSA.
2. SEED AND MULCH DISTURBED AREAS ONLY.
3. EXISTING SITE VEGETATION IS NATIVE GRASSES.

Item O - add a note discussing conditions of offsite grading near site entrance.

EROSION CONTROL COST OPINION:

1. 1,403 LF-SILT FENCE @ \$2.50/LF	\$ 3,508
2. 1 EA-VEHICLE TRACKING CONTROL @ \$2,370/EA	\$ 2,370
3. 1 EA-CONCRETE WASHOUT @ \$900/EA	\$ 900
4. 5 EA-INLET PROTECTION @ \$167/EA	\$ 835
5. 0.78 AC-SEED AND MULCH @ \$1,500/AC	\$ 1,170
6. 1 EA-TEMP SEDIMENT TRAP @ \$1,762/EA	\$ 1,762
7. 40% MAINTENANCE AND REPLACEMENT	\$ 4,218
TOTAL	\$ 14,763

EROSION CONTROL LEGEND

KEY	TITLE	SYMBOL	IMPLEMENTATION PHASE
(SF)	SILT FENCE	---	INITIAL
(SSA)	STABILIZED STAGING AREA	---	INITIAL
(VTC)	VEHICLE TRACKING CONTROL	---	INITIAL
(SP)	STOCKPILE MANAGEMENT WITH PROTECTION	---	INITIAL
(CWA)	CONCRETE WASHOUT AREA	---	INITIAL
(IP)	INLET PROTECTION	---	INITIAL
(MU)	MULCHING - CRIMP FLAT AREAS, HYDROSEED ON SLOPES	---	FINAL
(PS)	PERMANENT SEEDING - DRILL SEED FLAT AREAS, BROADCAST SEED OR HYDROSEED ON SLOPES, SEED MIX PER DRAINAGE CRITERIA MANUAL (MAY 2014) VOL 1, TABLE 14-12	---	FINAL

Include origin of information (ex: visual inspection). Note that the drainage report states that there is "mostly grasses and dirt surfaces, and a small number of trees." Revise note to match drainage report.

Show location of waste container, portable toilets, and SWMP storage location.

SWMP references possible construction trailer. If applicable, show location on drawings.

If locations of any of the above are TBD, don't need to show on drawing for next submittal.

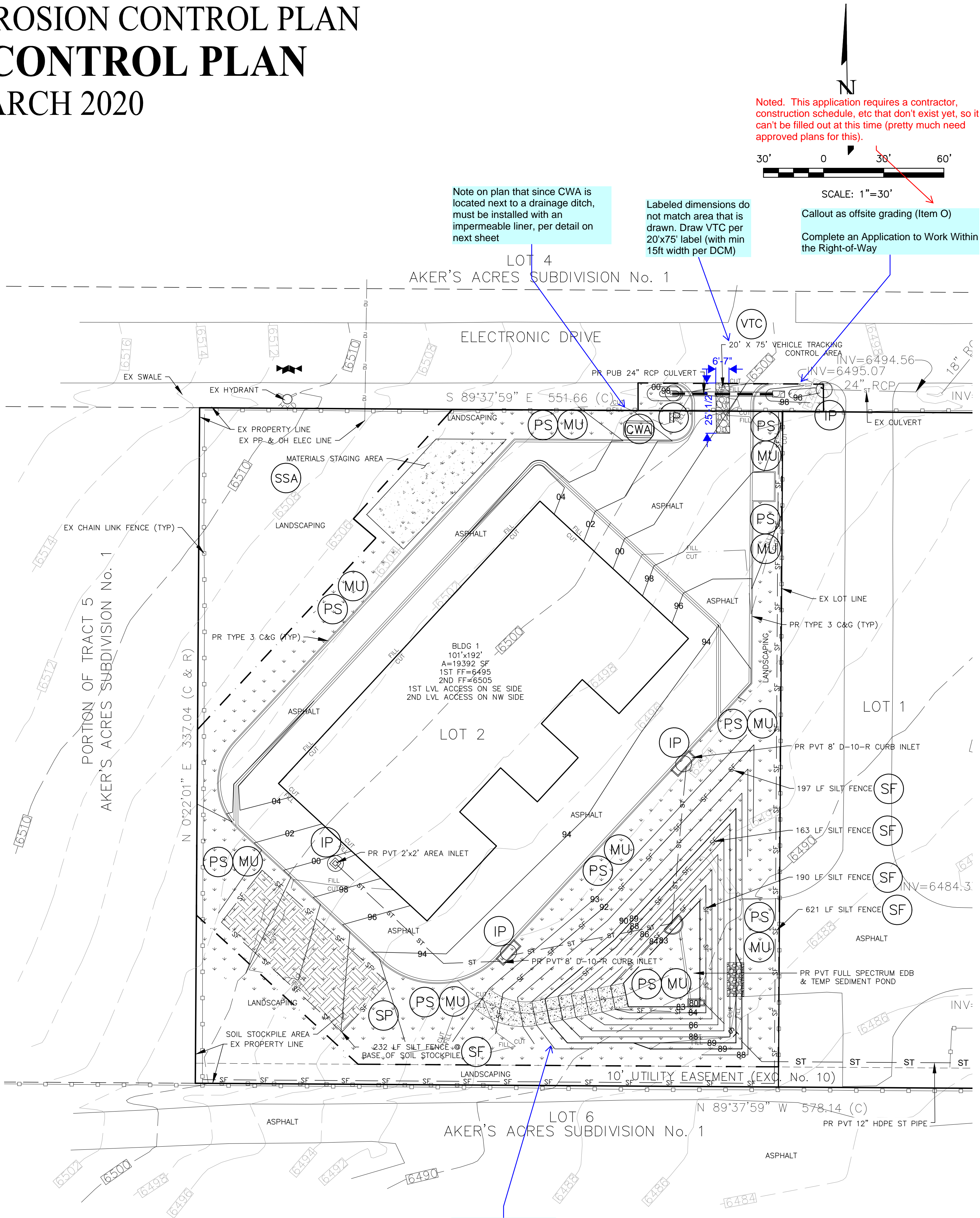
All TBD. Added a note.

ELECTRONIC STORAGE

GRADING AND EROSION CONTROL PLAN

EROSION CONTROL PLAN

MARCH 2020



Noted. This application requires a contractor construction schedule, etc that don't exist yet, so it can't be filled out at this time (pretty much need approved plans for this).

Callout as offsite grading (Item O)
Complete an Application to Work Within the Right-of-Way

Note on plan that since CWA is located next to a drainage ditch, must be installed with an impermeable liner, per detail on next sheet

Labeled dimensions do not match area that is drawn. Draw VTC per 20'x75' label (with min 15ft width per DCM)

Need to show easement around pond

REVISIONS	NO.	DESCRIPTION	DATE
UNTIL SUCH TIME AS THESE DRAWINGS ARE APPROVED BY THE REVIEWING AGENCIES, TERRA NOVA ENGINEERING, INC. APPROVES THEIR USE ONLY FOR THE PROJECT AND ONLY FOR THE DESIGNATED BY WRITTEN AUTHORIZATION.			
PREPARED FOR: D. STEFANO-BUILDING &... ATTN: DAVID STEFANO 520 W 21ST ST, G-2 #710 NORFOLK, CA 94517 757.333.3144			
DESIGNED BY DLF DRAWN BY DLF CHECKED BY LD H-SCALE 1" = 30' V-SCALE N/A JOB NO. 1971.00 DATE ISSUED 03/23/20 SHEET NO. 5 OF 7			