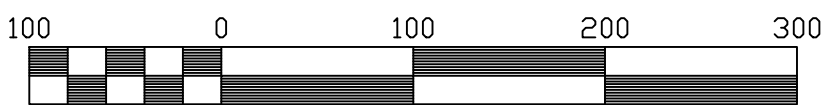
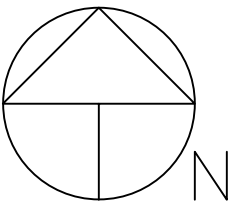
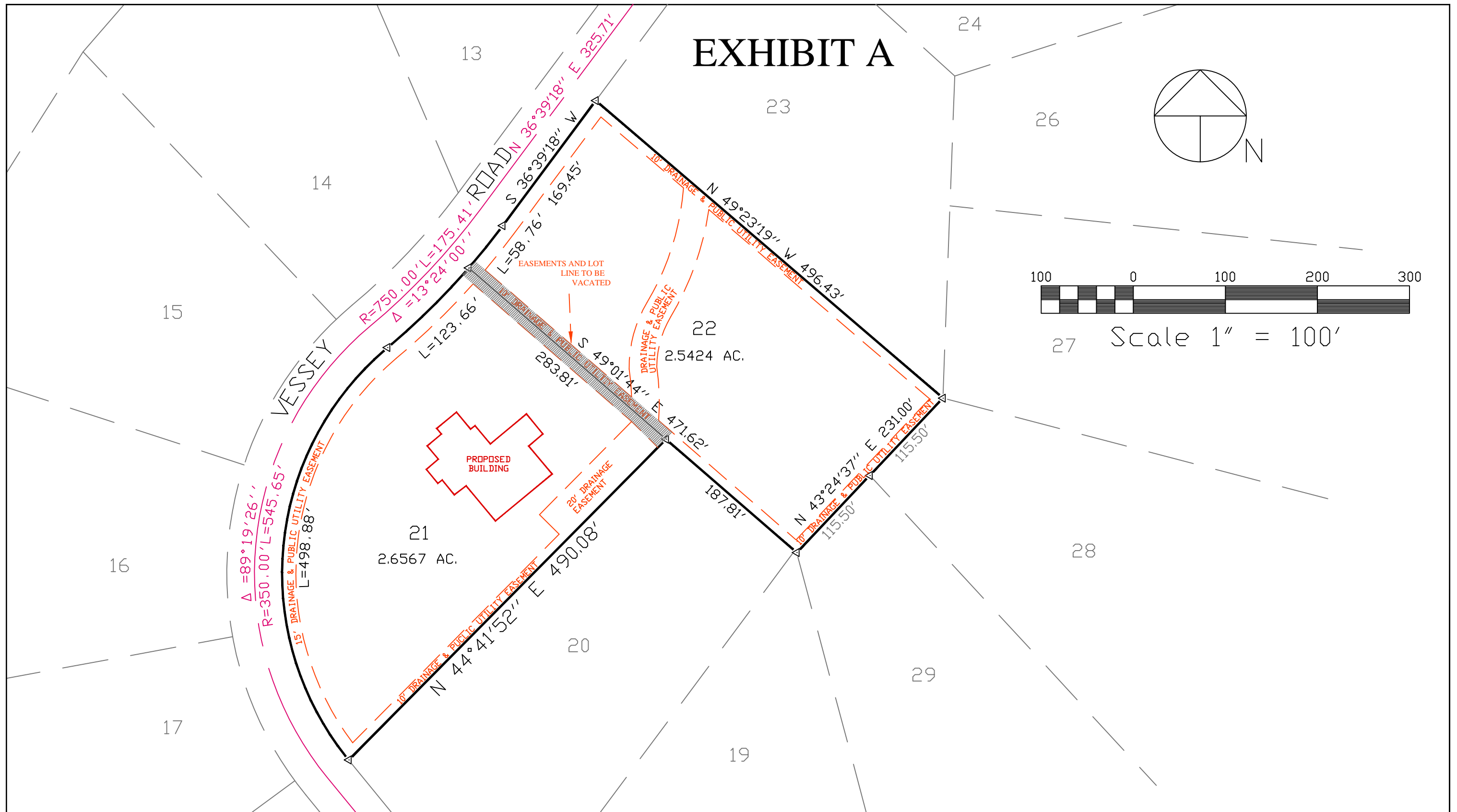


EXHIBIT A



27 Scale $1'' = 100'$



DRAWN BY: D.E. WATTS DATE: 3-1-18 DWG. NO.: 18-5142-01 SURVEYED BY: DEW, ESW, DJW, 3-23-18	REVISIONS	OLIVER E. WATTS CONSULTING ENGINEER COLORADO SPRINGS	PROJECT 5310 & 5390 VESSEY ROAD L'S 21&22, CATHEDRAL PINES #2 EL PASO COUNTY	SHT. NAME <h1>SITE PLAN</h1>	SHT. NO. 1 OF 1
---	-----------	--	---	---------------------------------	--------------------------