

For retaining walls in ponds, MHFD has the following guidance:
-Per MHFD Detail T-5, "the use of walls is highly discouraged due to maintenance constraints."
-Per MHFD DCMv2 Chap 12, pg 12-29, "The use of retaining walls within detention basins is generally discouraged due to the potential increase in long-term maintenance access and costs as well as concerns regarding the safety of the general public and maintenance personnel. Where walls are used, limit the length of the retaining walls to no more than 50% of the basin perimeter."

The original Geotech Report submitted with the Preliminary Plan (SP197) did not discuss design considerations and requirements for retaining walls. Nor did it discuss the effects of water pressure and soil saturation on a retaining wall specifically within a pond.

Provide an updated Geotech Report that discusses the items above.

Per discussions with the county on 7/20/23, due to the nature of the designed pond, there are no issues with the proposed retaining wall surrounding the proposed pond.

Detail shows crest elevation of 6375.30 & per MHFD-Detention spreadsheet in FDR elevation is 6375.5. Please revise so same elevation is shown on all items.

Per MHFD-Detention spreadsheet in FDR, crest width is 10'. Please revise to FDR and drawings show same information.

Per FDR, pond outlet pipe is 15". Please reconcile dimension between report and plans.

Walls are discouraged in pond areas, but where they are used, length is limited to no more than 50% of the basin perimeter.

Elevation does not match information on MHFD-Detention spreadsheet in FDR

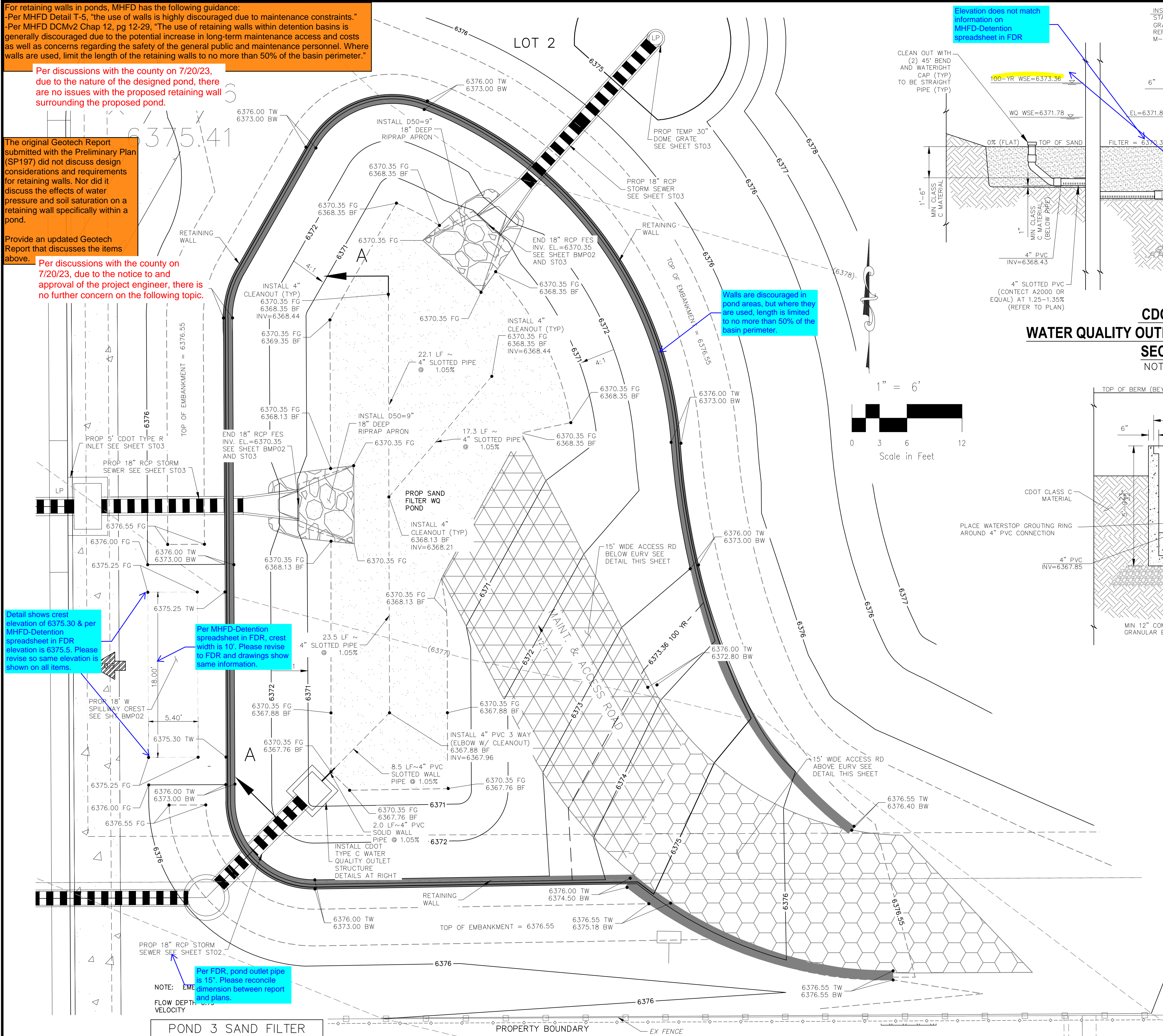
15" pipe per MHFD-Detention spreadsheet in FDR

Elevations do not match. Revise

Per MHFD-Detention spreadsheet, there is no restrictor plate. Please revise so FDR and drawings have same information.

15" pipe per MHFD-Detention spreadsheet in FDR

Per MHFD-Detention spreadsheet, there is no restrictor plate. Please revise so FDR and drawings have same information.

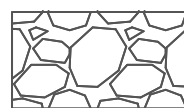


LOT 2 - SAND FILTER POND 3
SITE PLAN
SCALE 1"=6'

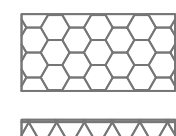
LEGEND:



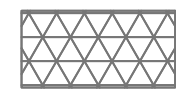
EMERGENCY OVERFLOW



PROPOSED RIPRAP



MAINTENANCE/ACCESS ROAD ABOVE EURV



MAINTENANCE/ACCESS ROAD BELOW EURV

123

LOT NUMBER OR TRACT

100 YR WATER SURFACE

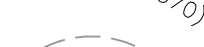
100 YR WATER SURFACE



PROP MAJ CONT



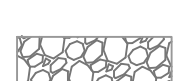
PROP MIN CONT



EXIST MAJ CONT



EXIST MIN CONT



RIPRAP TYP.



CDOT CLASS C MATERIAL

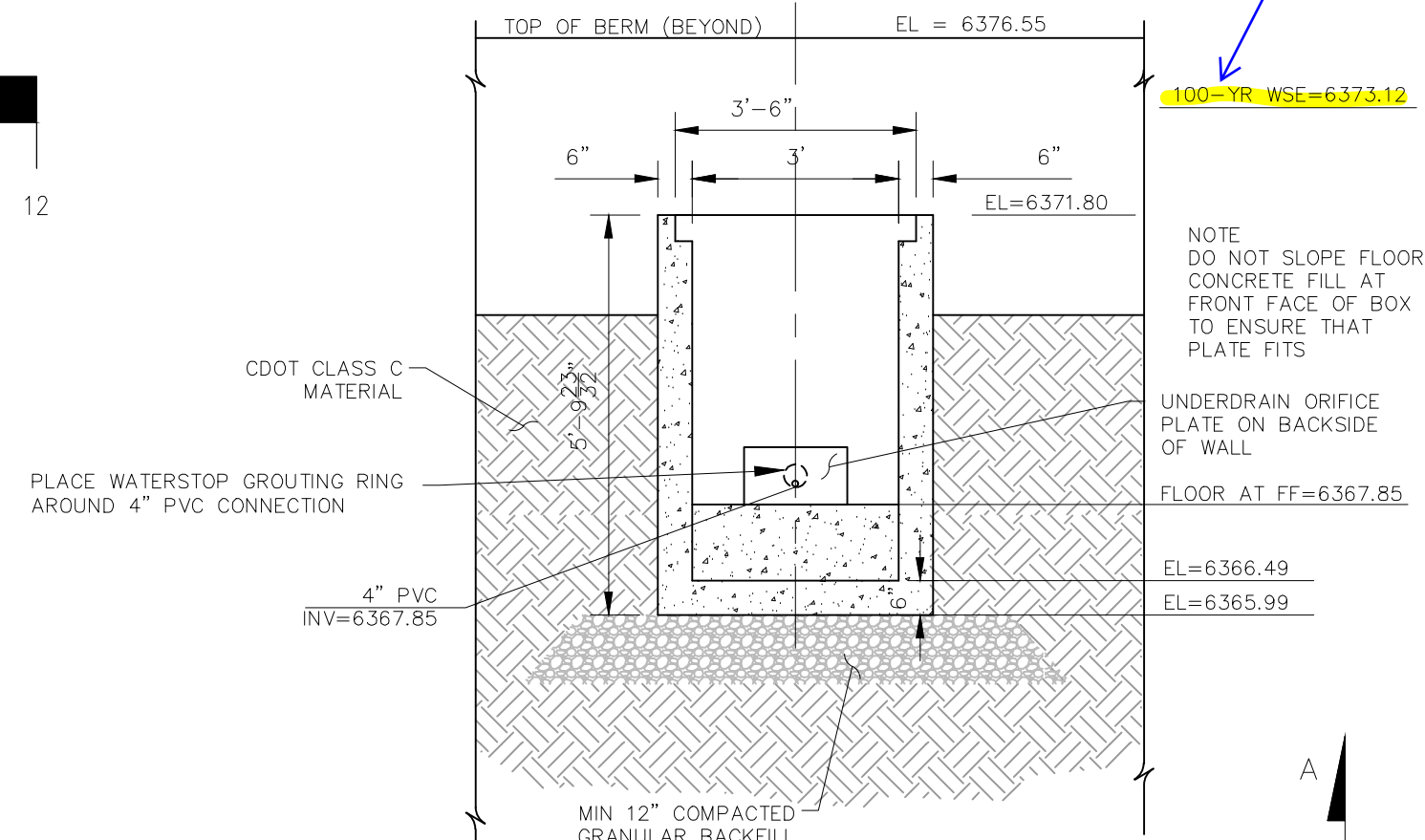


PROP STORM SEWER PIPE

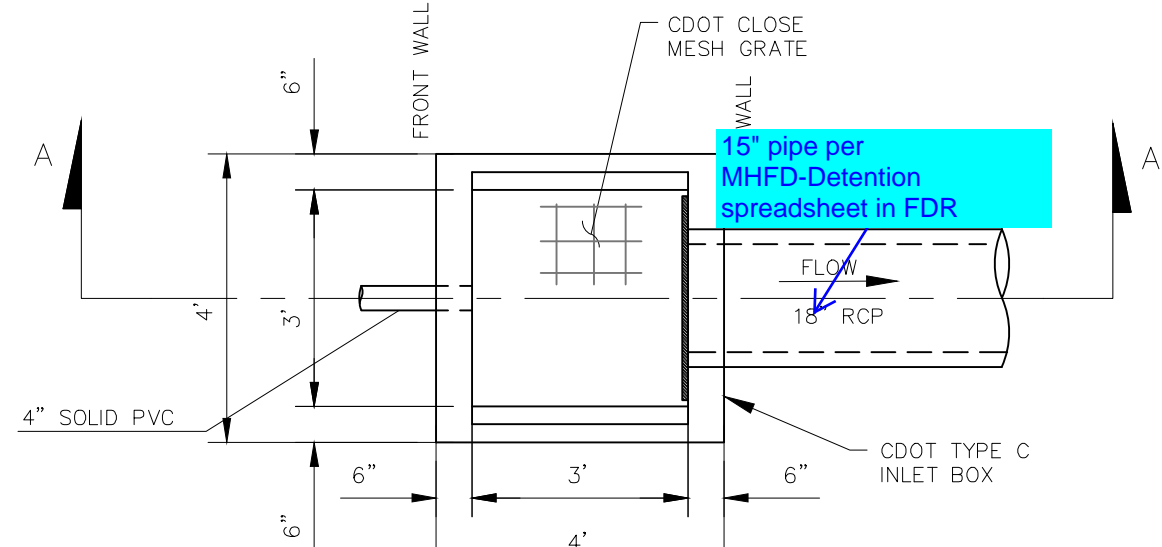


WARNING SIGN

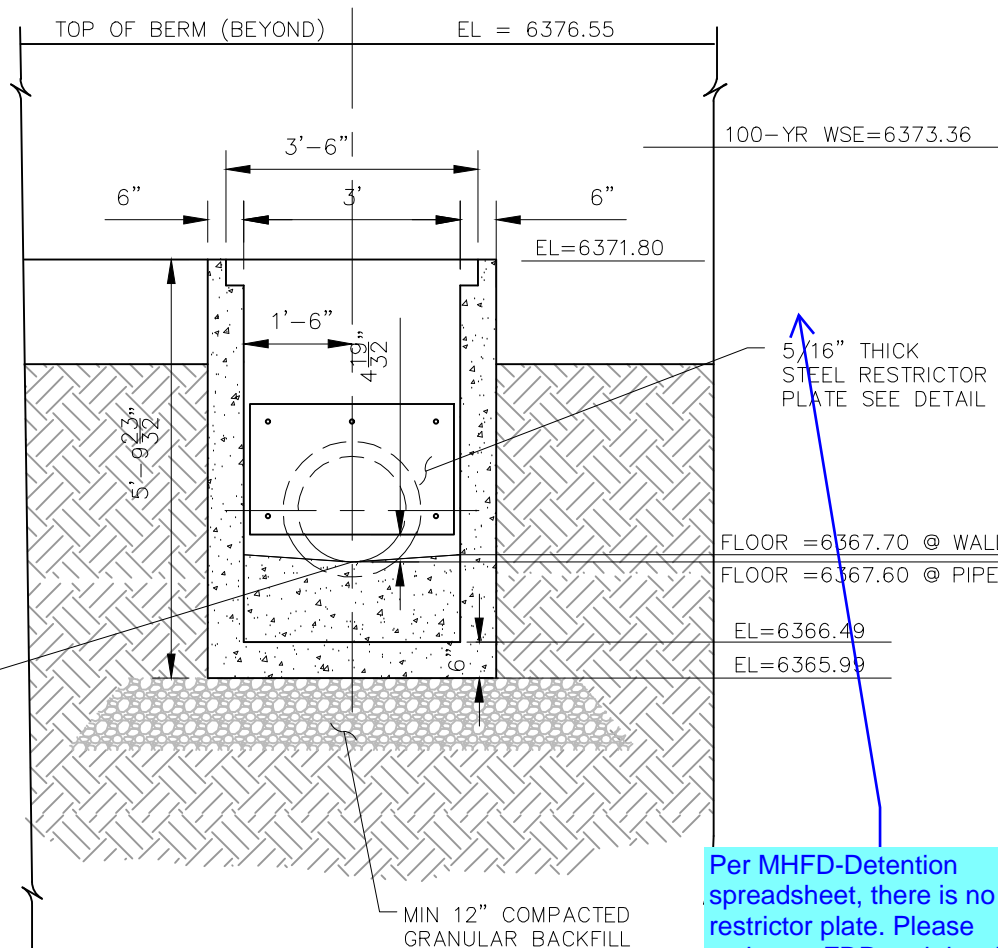
CDOT TYPE C
WATER QUALITY OUTLET BOX AND SAND FILTER
SECTION A-A
NOT TO SCALE



OUTLET BOX
FRONT WALL
NOT TO SCALE



CDOT TYPE C PLAN
NOT TO SCALE



OUTLET BOX REAR WALL
NOT TO SCALE



FOR LOCATING
& MARKING
GAS,
ELECTRIC,
WATER &
TELEPHONE
LINES

FOR BURIED UTILITY INFORMATION
48 HRS BEFORE YOU DIG
CALL 1-800-922-1987

POND 3 SAND FILTER
DETENTION BASIN DATA

WQ WATER SURFACE EL = 6371.78
WQ VOLUME=0.051 AC-FT
100-YR WATER SURFACE EL=6373.36
100-YR VOLUME=0.153 AC-FT
SPILLWAY CREST EL=6375.30
TOP OF EMBANKMENT EL=6376.55
RATIONAL 100-YR INFLOW=14.8 CFS
MHFD 100-YR INFLOW = 9.0 CFS
MHFD 100-YR RELEASE = 4.0 CFS

CLAREMONT BUSINESS PARK 2 FIL. NO. 2

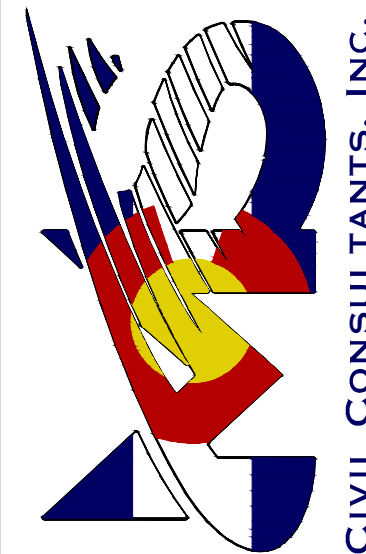
OUTLET STRUCTURE POND 3 DETAILS

PROJECT NO. 10-020
SCALE: HORIZONTAL: 1"=6'
VERTICAL: N/A
DATE: 05/22/23
DESIGNED BY: GW
DRAWN BY: CLP
CHECKED BY: VAS

BMP01

SHEET 12 OF 14

212 N. WAHATCH AVE., STE 305
COLORADO SPRINGS, CO 80903
PHONE: 719.555.5465



CIVIL CONSULTANTS, INC.

FOR AND ON
BEHALF OF
WKS CIVIL
CONSULTANTS,
INC.



REVISIONS:
NO. DATE BY DESCRIPTION

THE ENGINEER PREPARING THESE PLANS WILL NOT BE RESPONSIBLE, OR LIABLE FOR, UNAUTHORIZED CHANGES TO OR USES OF THESE PLANS. ALL CHANGES TO THE PLANS MUST BE IN WRITING AND MUST BE APPROVED BY THE PREPARED BY THESE PLANS.

CAUTION