

WATER AND SANITARY SEWER SERVICE INSTALLATIONS GENERAL NOTES:

1. ALL MATERIALS AND WORKMANSHIP SHALL BE IN CONFORMANCE WITH THE CHEROKEE METROPOLITAN DISTRICT STANDARDS AND THE CITY OF COLORADO SPRINGS CONSTRUCTION STANDARDS UNLESS OTHERWISE NOTED. IN THE EVENT OF CONFLICTING STANDARDS CHEROKEE METROPOLITAN DISTRICT (CMD) STANDARDS SHALL GOVERN.
2. ALL WATER SYSTEM MAINS PIPE MATERIAL SHALL BE POLYVINYL CHLORIDE (PVC) CLASS 200 (DR-14) PER AWWA C-900 AND ASTM D241 SPECIFICATIONS, EXCEPT WHERE NOTED. SPECIFICALLY, SECTIONS OF WATER PIPE THAT CROSS UNDER MAJOR DRAINAGE WAYS (SAND CREEK) OR MAJOR THOROUGHFARES SHALL BE DUCTILE IRON PIPE.
3. ALL FITTINGS SHALL BE CONSTRUCTED OF GRAY-IRON MATERIAL AND FURNISHED WITH MECHANICAL JOINT ENDS. ALL FITTINGS SHALL HAVE A MINIMUM PRESSURE RATING OF 250 PSI AND SHALL BE WRAPPED WITH A 9-MIL THICKNESS POLYETHYLENE MATERIAL PER AWWA STANDARD C105.
4. ALL WATER PIPES SHALL BE INSTALLED WITH A MINIMUM COVER OF FIVE (5) FEET BELOW FINISHED GRADE.
5. ALL BENDS, TEES FIRE HYDRANTS, BLOW-OFF, AND PLUGS AT DEAD END MAINS SHALL BE INSTALLED WITH CONCRETE THRUST BLOCKS.
6. VALVE BOXES SHALL BE TYLER SLIP, TYPE "C" CAST IRON VALVE BOX ASSEMBLY SERIES 8860 WITH NO. 160 OVAL BASE OR APPROVED EQUAL.
7. ALL WATER SYSTEM COMPONENTS SHALL BE FLUSHED AND CHLORINATED PER AWWA C-601, "DISINFECTING WATER MAINS" PRIOR TO ACCEPTANCE. THE CONTRACTOR SHALL PRODUCE A 25 MG/L SOLUTION BY ADHERING CHLORINE TABLETS TO THE PIPE SECTION WITH PERMATEX CLEAR TRY INSIDE THE SYSTEM. CHLORINATION SHALL OCCUR PRIOR TO HYDROSTATIC TESTING. THE CONTRACTOR SHALL OBTAIN A BACTERIOLOGICAL SAMPLE AFTER THE SYSTEM HAS BEEN FLUSHED. A CLEAN BACTERIOLOGICAL SAMPLE MUST BE OBTAINED PRIOR TO THE SYSTEM BEING PLACED INTO SERVICE.
8. HYDROSTATIC TESTING: ALL WATER SYSTEM MAINS SHALL BE FILED PRESSURE TESTED TO A MINIMUM OF 150 PSI OR 1 1/2 TIMES THE STATIC OPERATING PRESSURE, WHICHEVER IS GREATER. MAXIMUM ALLOWABLE LEAKAGE FOR EACH SECTION OF PIPE BETWEEN LINE VALVES SHALL NOT EXCEED THE FOLLOWING: \*10 GALLONS PER INCH OF PIPE DIAMETER PER MILE PER DAY.
9. ALL VALVES SHALL CONFORM TO OPEN LEFT CONVENTION PER CHEROKEE METROPOLITAN DISTRICT STANDARDS.
10. WHEN IT IS NECESSARY TO RAISE OR LOWER WATER MAINS AT OTHER UTILITY CROSSINGS THE CONTRACTOR SHALL INSURE A MINIMUM CLEARANCE OF 18" WHERE POSSIBLE BETWEEN THE OUTSIDE DIAMETERS OF PIPES.
11. WHILE CONSTRUCTING THE WATER AND WASTE WATER SYSTEM THE CONTRACTOR SHALL HAVE IN HIS POSSESSION AT LEAST ONE "APPROVED FOR CONSTRUCTION" SET OF UPDATED PLANS AT ALL TIMES. APPROVED FIELD MODIFICATIONS TO THE PLAN SETS SHALL BE CLEARLY IDENTIFIED IN RED INK ON THE PLANS BY THE CONTRACTOR PER FIELD CONSTRUCTION. THESE AS-BUILT CHANGES SHALL BE DATED AND SUBMITTED TO THE ENGINEER OF RECORD. THE ENGINEER OF RECORD SHALL PREPARE A COMPLETE SET OF "AS CONSTRUCTED" DRAWINGS AND DELIVER THE SETS TO THE CHEROKEE METROPOLITAN DISTRICT PRIOR TO FINAL ACCEPTANCE OF THE WATER SYSTEM.
12. PRIOR TO TAPPING ANY EXISTING WATER MAIN THE CONTRACTOR SHALL SUBMIT AND RECEIVE APPROVAL FOR SAID TAP IN ACCORDANCE WITH THE CHEROKEE METROPOLITAN DISTRICT STANDARDS.
13. ALL NONMETALLIC PIPES SHALL HAVE TRACER WIRE ATTACHED TO ITS TOP DURING CONSTRUCTION. THE TRACER WIRE SHALL BE #12 AWG INSULATED COPPER WIRE WITH NO. 12 COPPER CONNECTIONS AND SHALL BE PERMANENTLY AFFIXED TO THE TOP OF THE PIPE USING TAPE AT 4' INTERVALS. TRACER WIRE SHALL BE JOINED 3-WAY OR 4-WAY LOCKABLE MECHANICAL CONNECTORS SPECIFICALLY MANUFACTURED FOR USE IN UNDERGROUND TRACER WIRE INSTALLATIONS. NON-LOCKING FRICTION FIT, TWIST-ON, OR TAPED CONNECTIONS ARE NOT PERMITTED. THE TRACER WIRE SHALL ALSO BE CORROSION BY EPOXY OR SILICON COATING. ROUTE TRACER WIRES TO SURFACE AT ALL VALVE BOXES.
14. THE CONTRACTOR ASSUMES RESPONSIBILITY FOR THE PROTECTION OF ALL UTILITIES DURING THE WORK. PRIOR TO EXCAVATION, CONTACT THE UTILITY NOTIFICATION CENTER OF COLORADO AT (800) 922-1987 AT LEAST TWO WORKING DAYS PRIOR TO DIGGING.
15. SANITARY SEWER PIPE SHALL CONFORM TO ASTM D3034 SDR35 PVC.
16. CONTRACTOR SHALL FIELD VERIFY LOCATION AND ELEVATION OF EXISTING INVERTS PRIOR TO INSTALLATION OF NEW SANITARY SEWER SYSTEM.
17. ALL SANITARY SEWER MANHOLES, LIDS, BASES AND OTHER APPURTENANCES SHALL BE IN ACCORDANCE WITH CHEROKEE METROPOLITAN DISTRICT STANDARD MANHOLE DETAILS (5" MIN DIAMETER), EXCEPT AS NOTED ON THESE PLANS. WHERE REQUIRED ON THESE PLANS, WATER TIGHT MANHOLES, LIDS AND CONNECTIONS SHALL BE PROVIDED BY COLORADO SPRINGS STANDARDS. ALL NEW MANHOLES SHALL BE COATED AND LINED PER CMD STANDARDS.
18. SANITARY SEWER SERVICE LINES SHALL BE LOCATED PER THE DETAIL ON THE UTILITY SERVICE PLAN, OR AT THE DIRECTION OF THE INSPECTOR.
19. OVERLOT GRADING AND STREET SUB-GRADE MUST BE WITHIN +/- ONE (1) FOOT PRIOR TO ANY UTILITY INSTALLATION.
20. TRACER WIRE IS TO BE INSTALLED WITH ALL SANITARY SEWER MAIN LINES AND SERVICES (FROM THE MAIN LINE TO THE BUILDING STRUCTURE), AS OUTLINED IN COMMENT #13.
21. MINIMUM DEPTH OF SANITARY SEWER IS 6 FEET OF COVER. IF THIS MINIMUM CANNOT BE ACHIEVED DUE TO SHALLOW SEWER TUB THEN THE FOLLOWING APPLIES: OTHERWISE THE SEWER SERVICE MUST HAVE 6 FEET OF COVER:  
DEPTH GREATER THAN 4 FEET (AND LESS THAN 20'): MATERIAL TYPE SDR 35  
DEPTH BETWEEN 4 FEET AND 6 FEET: MATERIAL TYPE SCH 40 OR CAST IRON (CIP)  
DEPTH LESS THAN 4 FEET: MATERIAL TYPE SCH 40 OR CIP WITH CONCRETE CAP.
22. WATER SERVICE MUST BE OVER THE SEWER AT ALL TIMES (MINIMUM 18" INCHES) OTHERWISE STEEL CASING MUST BE USED. SEWER SERVICE PIPE LOCATED WITHIN ONE FOOT OF THE WATER SERVICE LINE MUST BE CONSTRUCTED WITH SCH 40 PIPE OR DIP.
23. ALL EXTERIOR SEWER CLEAN OUTS (CO) MUST HAVE A CAST IRON, TRAFFIC RATED COVER, OR EQUIVALENT CONCRETE COLLAR.
24. UPON COMPLETION OF CONSTRUCTION AND PRIOR TO ACCEPTANCE BY THE DISTRICT, TWO (2) COPIES OF "AS-CONSTRUCTED" PLANS AND TWO (2) SETS OF ELECTRONIC DATA FILES OF THE PLANS SHALL BE SUBMITTED TO THE DISTRICT FOR RECORD.
  - a. THE TWO (2) COPIES SHALL BE COMPLETE WITH ALL "AS-CONSTRUCTED" INFORMATION TOGETHER WITH A CERTIFICATION BY THE PARTY RESPONSIBLE FOR CONSTRUCTION THAT ALL DATA THEREON IS ACCURATE AND REPRESENTS ACTUAL CONSTRUCTED CONDITIONS.
  - b. THE TWO PLAN SETS SHALL BE SUBMITTED ON SHEETS THAT ARE 24" X 36" IN SIZE.
  - c. THE PLAN SET SHALL BE ON A DURABLE MEDIA THAT CAN BE RUN THROUGH PHOTOCOPIING EQUIPMENT.
  - d. THE TWO ELECTRONIC DATA FORMATS SHALL BE SUBMITTED. THE FIRST ELECTRONIC DATA FILE SET SHALL BE IN AUTOCAD 2006 OR NEWER FORMAT WITH NO EXTERNAL REFERENCE DRAWINGS. ALL EXTERNAL REFERENCES MUST BE FOUND IN THE DRAWING SET. THE SECOND SET OF ELECTRONIC DATA FILES SHALL BE IN ADOBE ACROBAT .PDF FORMAT.
  - e. "AS-CONSTRUCTED" PLANS SHALL BE SUBMITTED WITHIN TWO WEEKS OF COMPLETION OF THE WATER AND/OR SANITARY SEWER UTILITIES.
  - f. NO AUTHORIZATION TO CONNECT TO THE SYSTEM OR DISCHARGE TO THE SYSTEM WILL BE ALLOWED UNTIL THE "AS-CONSTRUCTED" DOCUMENTS HAVE BEEN RECEIVED AND ACCEPTED BY THE DISTRICT.
  - g. ALL PLANS, SPECIFICATIONS AND SUPPORTING DOCUMENTS SHALL BE PREPARED BY OR UNDER THE DIRECT SUPERVISION OF A PROFESSIONAL ENGINEER LICENSED TO PRACTICE IN THE STATE OF COLORADO. ALL PLANS AND SPECIFICATIONS SHALL BEAR THE SEAL AND SIGNATURE OF SAID LICENSED PROFESSIONAL ENGINEER.

BENCHMARKS:

1. BL33 BEING A BERNTSEN TOP SECURITY MONUMENT IN RANGE BOX 5' SOUTH OF SOUTH ROW FENCE OF HWY 24 UNDER CENTERLINE OF TRANSMISSION LINE. ELEVATION = 6372.26' PLATTE AVENUE
2. CONTROL POINT 1, SET PK NAIL IN NE CORNER OF ELECTRIC TRANSFORMER PAD ELEVATION = 6372.26'

BASIS OF BEARINGS

THE NORTH LINE OF LOTS 5, 6 AND 7 "CLAREMONT BUSINESS PARK 2 FILING NO. 1" AS RECORDED UNDER RECORD NO. 22171474 OF THE RECORDS OF EL PASO COUNTY, COLORADO, MONUMENTED AT THE NORTHEAST CORNER OF LOT 5 WITH A NO. 5 REBAR WITH ORANGE SURVEYOR'S CAP STAMPED "M&S CIVIL PLS 25966", FROM WHICH THE NORTHWEST CORNER OF LOT 7, MONUMENTED WITH A NO. 5 REBAR WITH ORANGE SURVEYOR'S CAP STAMPED M&S CIVIL PLS 25966, BEARS S89°44'12"W, A DISTANCE OF 578.27 U.S. SURVEY FEET.



# CLAREMONT BUSINESS PARK 2 FILING NO. 2

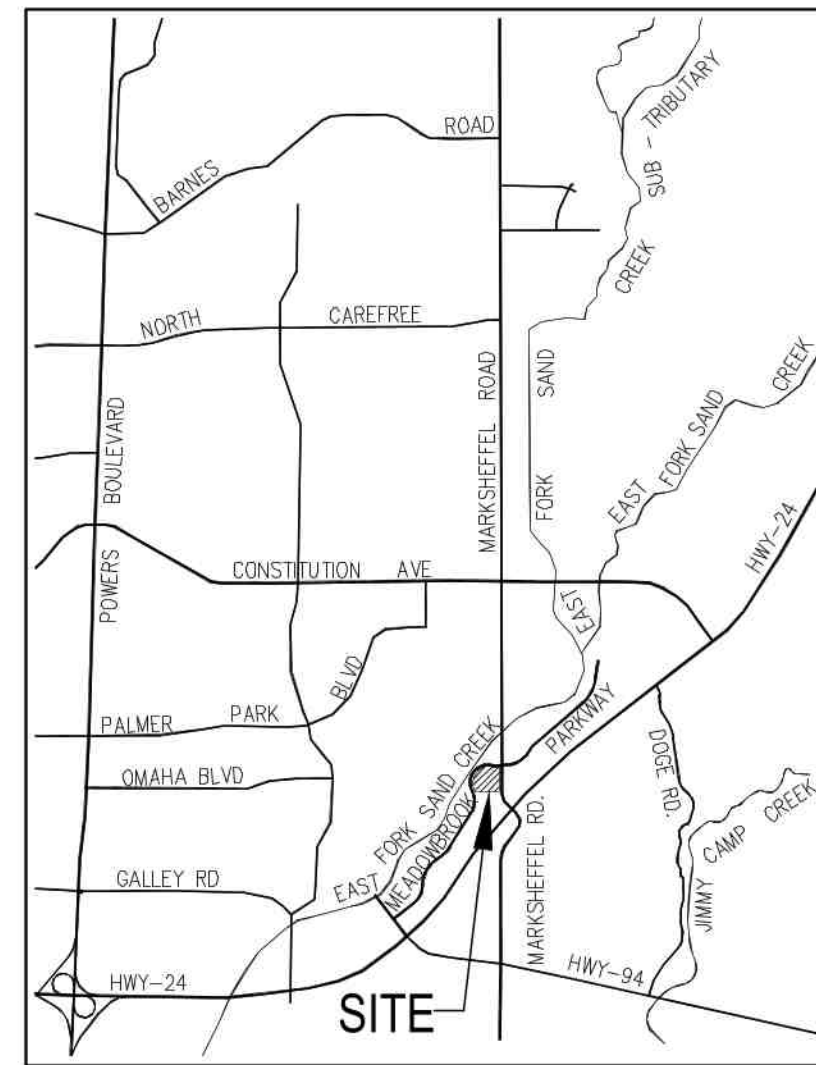
COUNTY OF EL PASO, STATE OF COLORADO

## SANITARY SEWER PLANS (INCLUDING UTILITY SERVICE PLAN)

JULY 2023

NOTE:

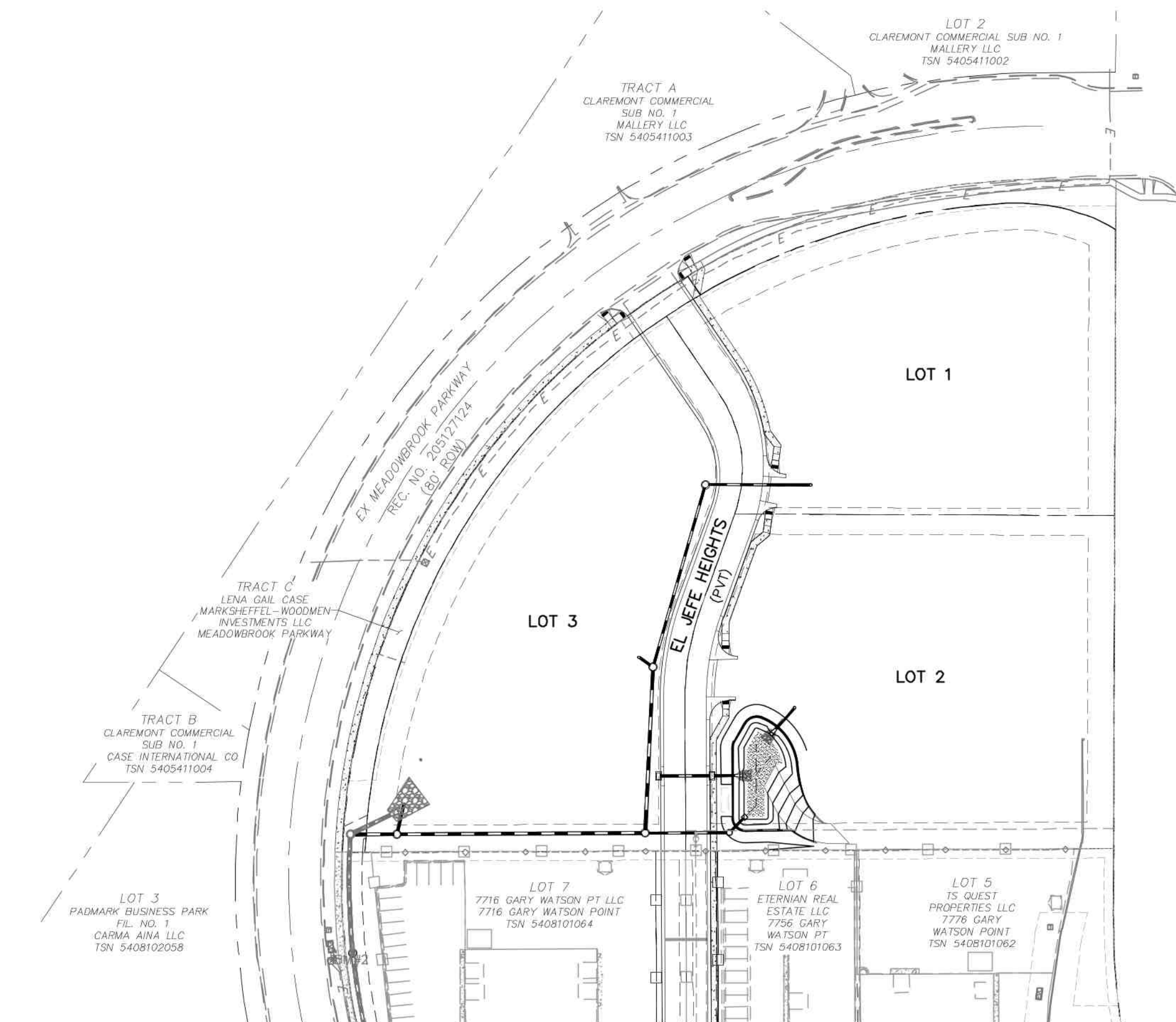
THE CONTRACTOR SHALL FIELD VERIFY THE ELEVATION OF ALL TIE-IN/CONNECTIONS TO EXISTING MANHOLES AND/OR STUBS PRIOR TO CONSTRUCTION. ANY DISCREPANCY TO THE ANTICIPATED/PREVIOUSLY MEASURED ELEVATIONS PROVIDED ON THE PLANS SHALL BE CONVEYED TO THE ENGINEER AND A RESOLVE REACHED PRIOR TO INSTALLATION.



VICINITY MAP  
N.T.S.

SHEET INDEX

SHEET 1	TITLE SHEET
SHEET 2	SANITARY PLAN & PROFILE (INCLUDING SAN SRVC'S)
SHEET 3	SANITARY DETAILS



SITE MAP  
N.T.S.

ENGINEER'S STATEMENT

THESE DETAILED PLANS AND SPECIFICATIONS WERE PREPARED UNDER MY DIRECTION AND SUPERVISION AND IS CORRECT TO THE BEST OF MY KNOWLEDGE AND BELIEF. SAID PLANS HAS BEEN PREPARED ACCORDING TO THE CRITERIA ESTABLISHED BY THE CHEROKEE METROPOLITAN DISTRICT. I ACCEPT RESPONSIBILITY FOR ANY LIABILITY CAUSED BY NEGLIGENT ACTS, ERRORS OR OMISSIONS ON MY PART IN PREPARING THIS REPORT.



APPROVED BY: Virgil A. Sanchez, Colorado P.E. #37160 DATE: 7/25/2023  
FOR AND ON BEHALF OF M & S CIVIL CONSULTANTS, INC.

CHEROKEE METROPOLITAN DISTRICT WATER & WASTEWATER PLAN APPROVAL

THE CHEROKEE METROPOLITAN DISTRICT RECOGNIZES THE DESIGN PROFESSIONAL OF RECORD AS THE LICENSED ENGINEER HAVING RESPONSIBILITY FOR THE SUBMITTED DESIGN AND THE DISTRICT HAS LIMITED ITS SCOPE OF REVIEW ACCORDINGLY. AS SUCH, THE APPROVAL GRANTED HEREIN IS FOR THE CONSTRUCTION OF THE FACILITIES AS REPRESENTED ON THESE DOCUMENTS. APPROVAL EXPIRES ONE (1) YEAR FROM THE DATE BELOW AND RESUBMITTAL OF THESE PLANS FOR REVIEW AND APPROVAL IS REQUIRED IF CONSTRUCTION DOES NOT BEGIN DURING THIS PERIOD.

APPROVED BY: Kevin Brown DATE: 12-20-23

OWNER/DEVELOPER'S STATEMENT:

I, THE OWNER/DEVELOPER HAVE READ AND WILL COMPLY WITH THE REQUIREMENTS IN THESE DETAILED PLANS AND SPECIFICATIONS.

APPROVED BY: Brian Zurek (Managing Partner) DATE: 7/25/2023  
DTV MEADOWBROOK LLC

EL PASO COUNTY:

COUNTY PLAN REVIEW IS PROVIDED ONLY FOR GENERAL CONFORMANCE WITH COUNTY DESIGN CRITERIA. THE COUNTY IS NOT RESPONSIBLE FOR THE ACCURACY AND ADEQUACY OF THE DESIGN, DIMENSIONS, AND/OR ELEVATIONS WHICH SHALL BE CONFIRMED AT THE JOB SITE. THE COUNTY THROUGH THE APPROVAL OF THIS DOCUMENT ASSUMES NO RESPONSIBILITY FOR COMPLETENESS AND/OR ACCURACY OF THIS DOCUMENT.

FILED IN ACCORDANCE WITH THE REQUIREMENTS OF THE EL PASO COUNTY LAND DEVELOPMENT CODE, DRAINAGE CRITERIA MANUAL, VOLUMES 1 AND 2, AND ENGINEERING CRITERIA MANUAL AS AMENDED.

IN ACCORDANCE WITH EGM SECTION 1.12, THESE CONSTRUCTION DOCUMENTS WILL BE VALID FOR CONSTRUCTION FOR A PERIOD OF 2 YEARS FROM THE DATE SIGNED BY THE EL PASO COUNTY ENGINEER. IF CONSTRUCTION HAS NOT STARTED WITHIN THOSE 2 YEARS, THE PLANS WILL NEED TO BE RESUBMITTED FOR APPROVAL, INCLUDING PAYMENT OF REVIEW FEES AT THE PLANNING AND COMMUNITY DEVELOPMENT DIRECTORS DISCRETION.

APPROVED BY: Joshua Palmer, P.E. DATE: \_\_\_\_\_  
COUNTY ENGINEER / ECM ADMINISTRATOR

EL PASO COUNTY FILE NO. VR233

CLAREMONT BUSINESS PARK 2 FIL. NO. 2

SANITARY SEWER PLANS

DATE: 07/20/23  
SCALE: HORIZONTAL: N/A VERTICAL: N/A  
DESIGNED BY: GW CLP  
DRAWN BY: VAS  
CHECKED BY: VAS

SS01

SHEET 1 OF 3

212 N. WAHSATCH AVE, STE 305  
COLORADO SPRINGS, CO 80903  
PHONE: 719.555.5465



FOR AND ON BEHALF OF M&S CIVIL CONSULTANTS, INC.

IRVING A. SANCHEZ, COLORADO P.E. NO. 37160



REV. NO.	DATE	BY	DESCRIPTION

THE ENGINEER PREPARING THESE PLANS WILL NOT BE RESPONSIBLE, OR LIABLE FOR, UNAUTHORIZED CHANGES TO OR USES OF THESE PLANS. ALL CHANGES TO THE PLANS MUST BE IN WRITING AND MUST BE APPROVED BY THE PREPARER OF THESE PLANS.

CAUTION

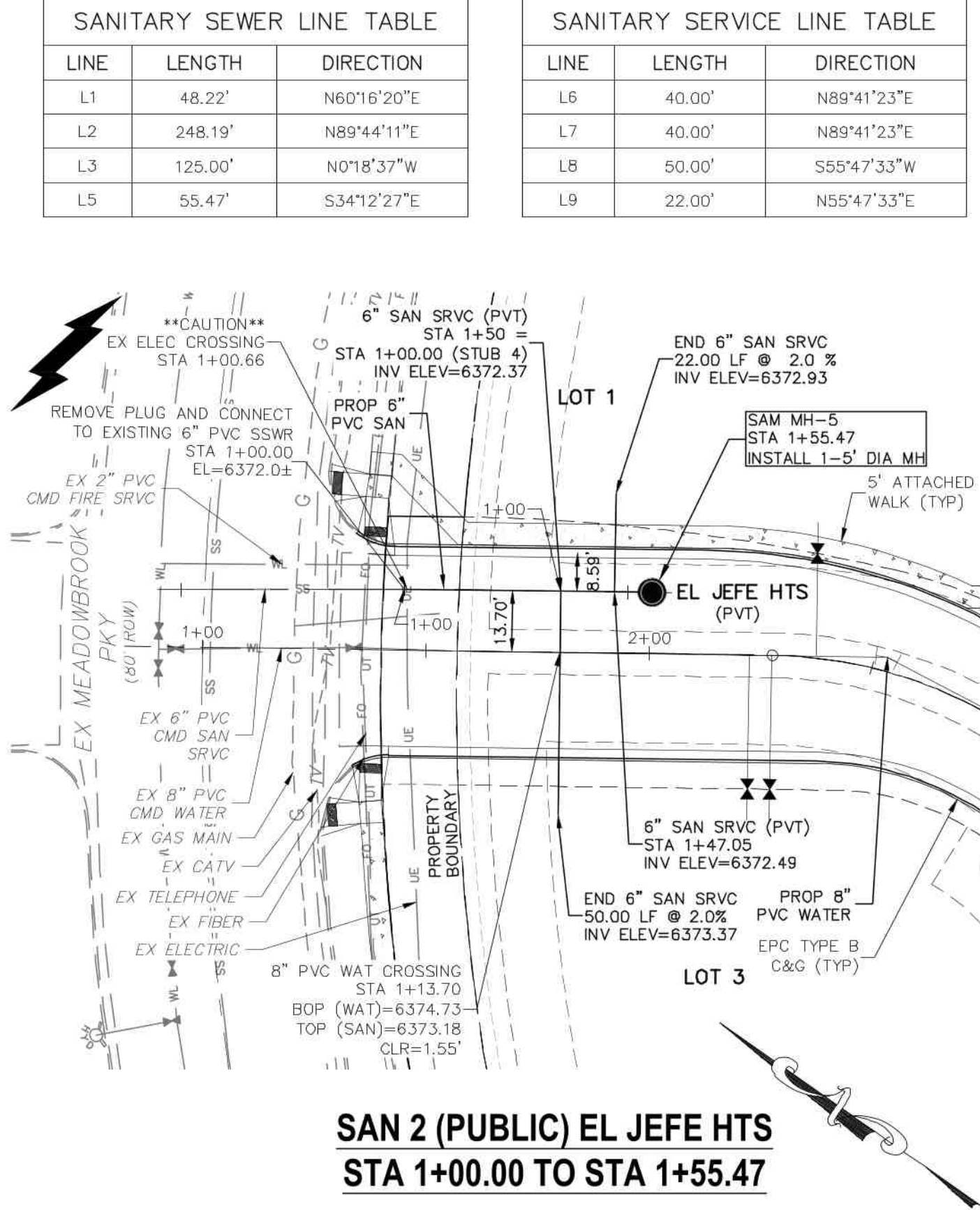
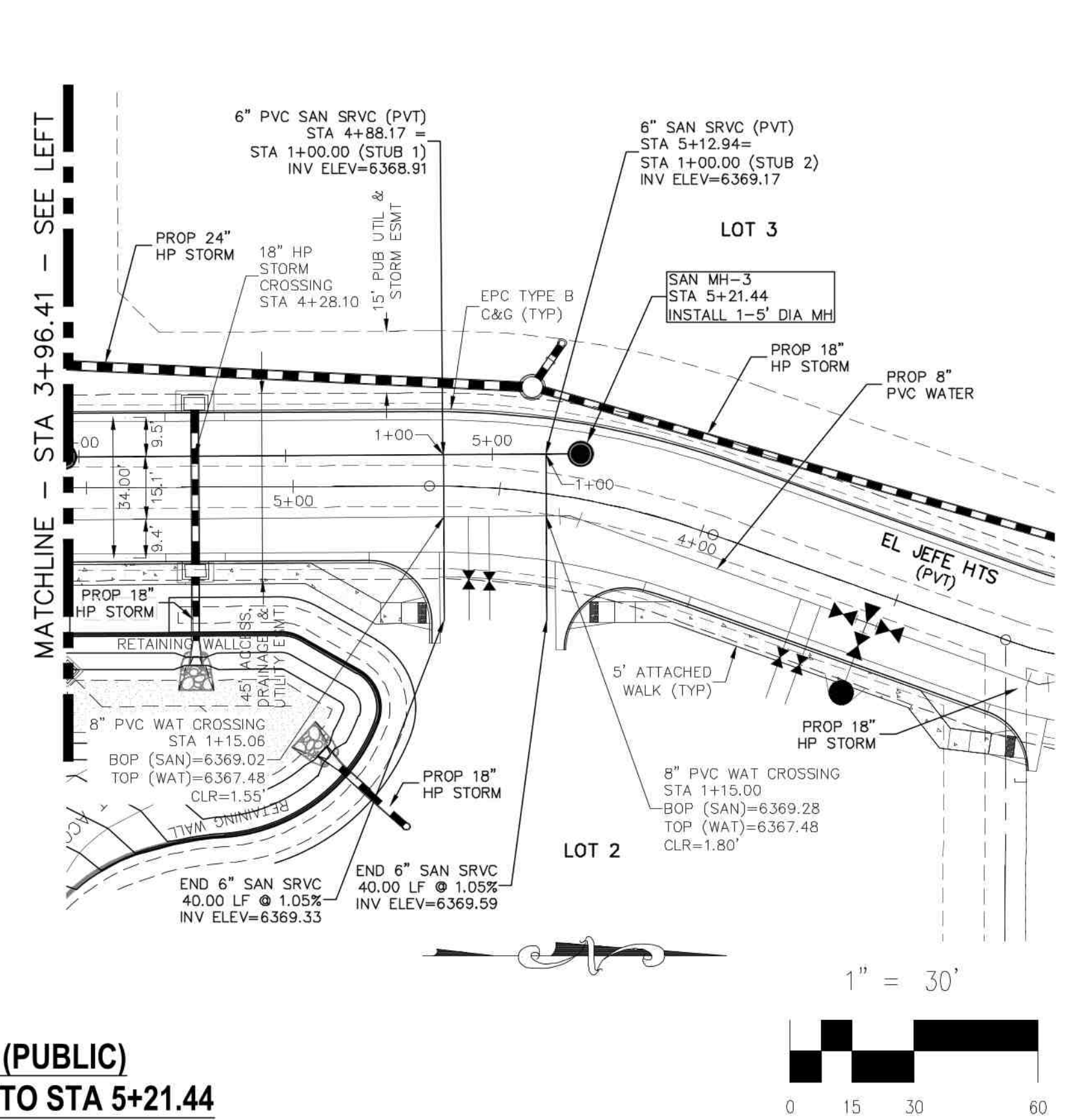
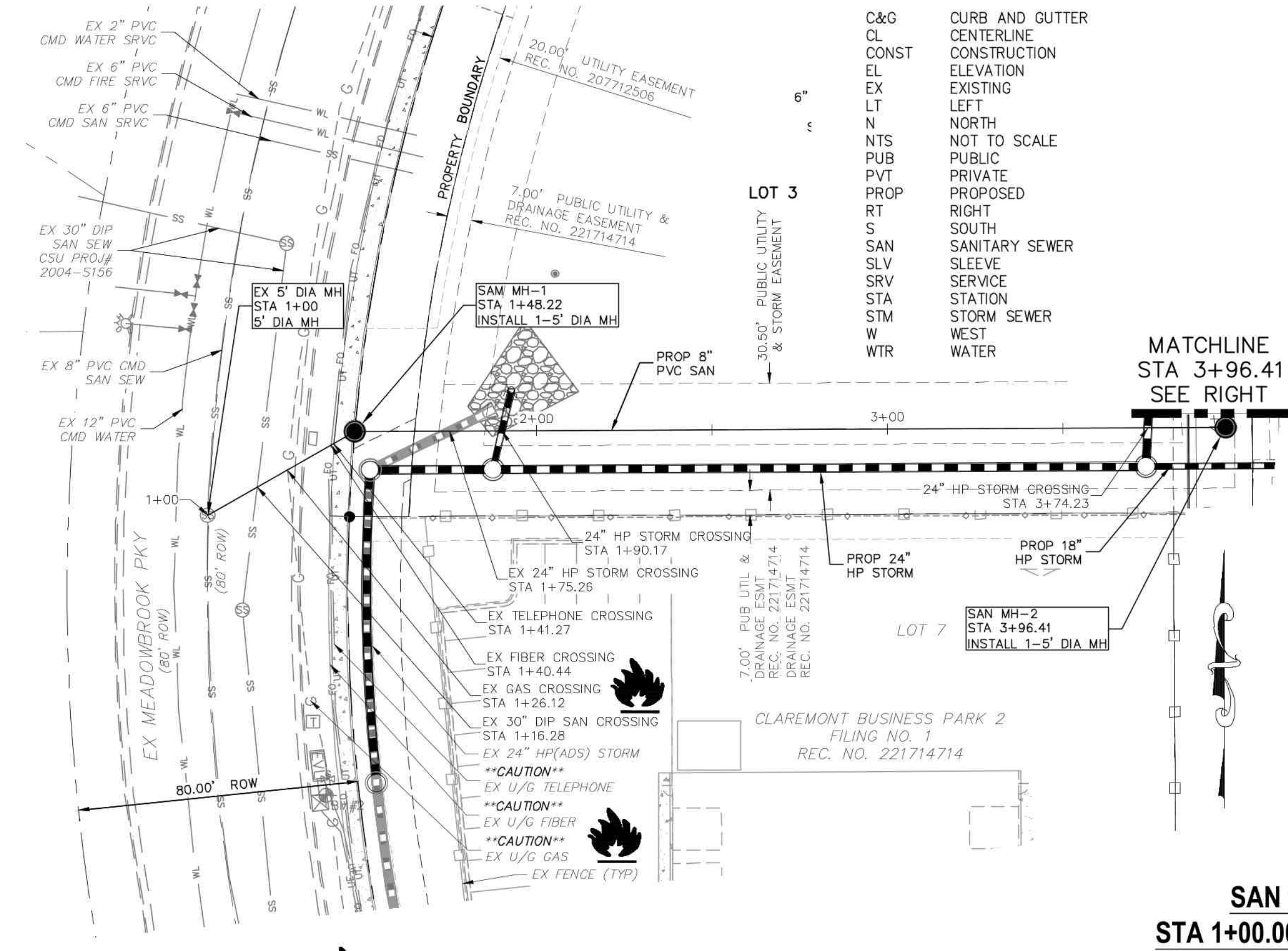


**ABBREVIATION LEGEND**

C&G	CURB AND GUTTER
CL	CENTERLINE
CONST	CONSTRUCTION
EL	ELEVATION
EX	EXISTING
LT	LEFT
N	NORTH
NTS	NOT TO SCALE
PUB	PUBLIC
PVT	PRIVATE
PROP	PROPOSED
RT	RIGHT
S	SOUTH
SAN	SANITARY SEWER
SLV	SLEEVE
SRV	SERVICE
STA	STATION
STM	STORM SEWER
W	WEST
WTR	WATER

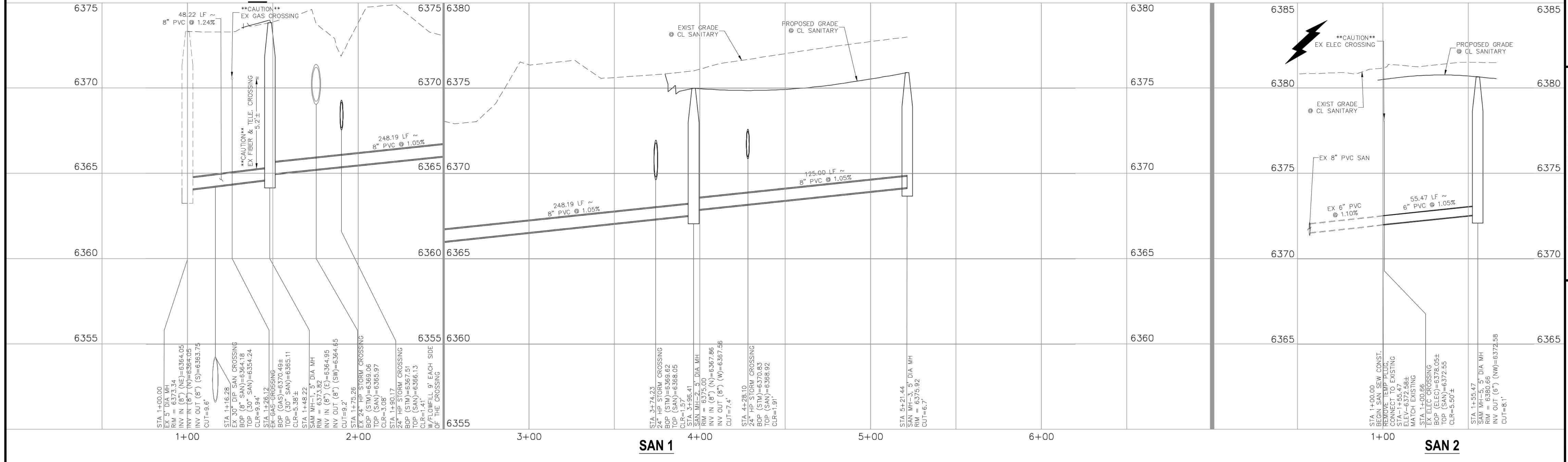
SANITARY SEWER LINE TABLE		
LINE	LENGTH	DIRECTION
L1	48.22'	N60°16'20"E
L2	248.19'	N89°44'11"E
L3	125.00'	N0°18'37"W
L5	55.47'	S34°12'27"E

SANITARY SERVICE LINE TABLE		
LINE	LENGTH	DIRECTION
L6	40.00'	N89°41'23"E
L7	40.00'	N89°41'23"E
L8	50.00'	S55°47'33"W
L9	22.00'	N55°47'33"E



**SAN 1 (PUBLIC)**  
STA 1+00.00 TO STA 5+21.44

**SAN 2 (PUBLIC) EL JEFE HTS**  
STA 1+00.00 TO STA 1+55.47



**SAN 1**

**SAN 2**

**CLAREMONT BUSINESS PARK 2 FIL. NO. 2**  
**SANITARY SEWER PLAN & PROFILE**  
PROJECT NO. 10-020  
DATE: 07/20/23  
SCALE: HORIZONTAL: 1"=30'  
VERTICAL: 1"=3'  
DESIGNED BY: GW  
DRAWN BY: CLP  
CHECKED BY: VAS

212 N. WARATCH AVE., STE 305  
COLORADO SPRINGS, CO 80903  
PHONE: 719.555.5865

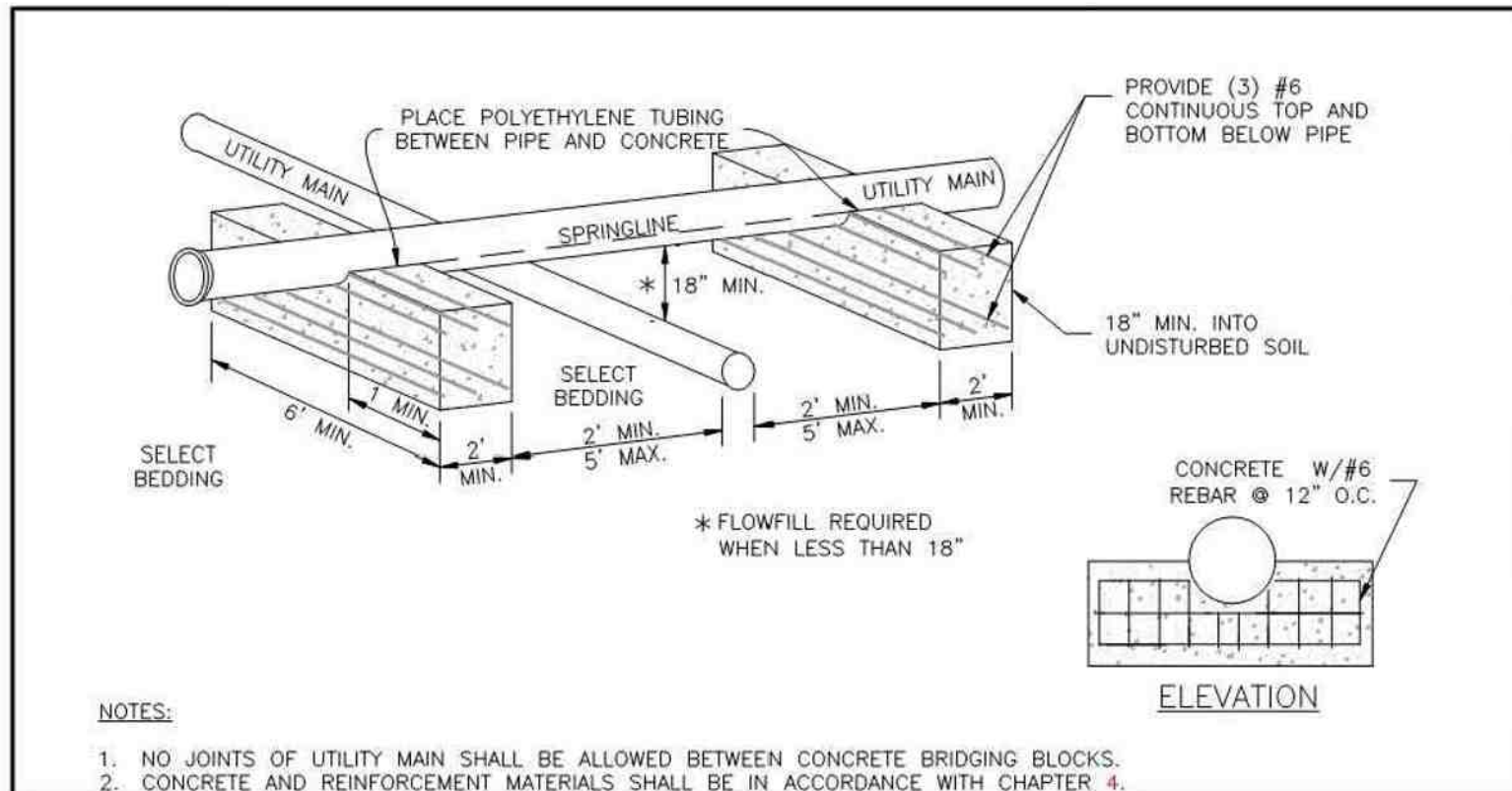


FOR AND ON BEHALF OF  
MRS. CIVIL CONSULTANTS, INC.  
REGISTERED PROFESSIONAL ENGINEER  
STATE OF COLORADO  
NO. 371160  
07/25/2023  
PROF. SIGNATURE

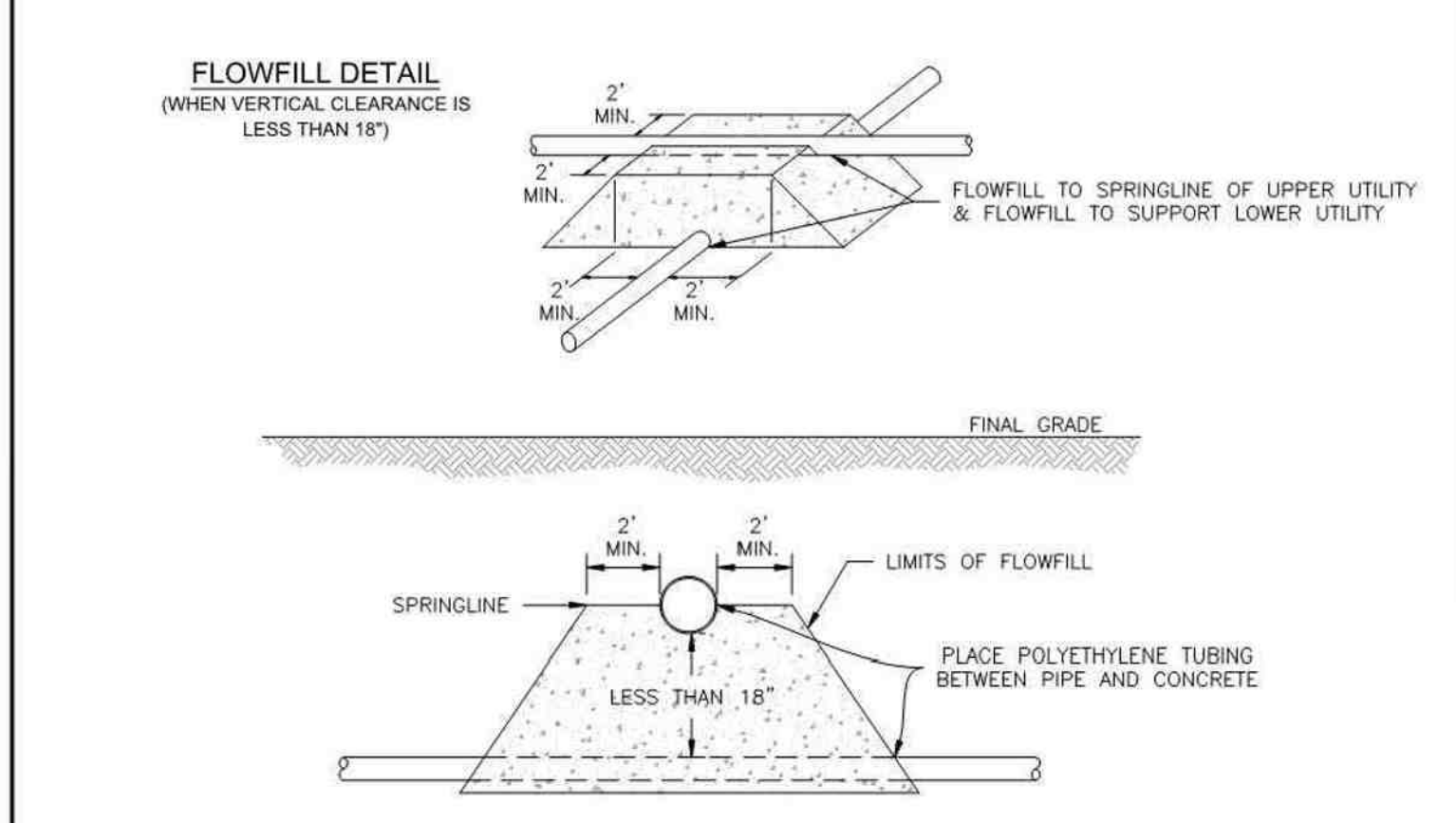
REVISIONS:  
NO. DATE BY DESCRIPTION APPROV. BY DATE  
THE ENGINEER PREPARING THESE PLANS WILL NOT BE RESPONSIBLE, OR LIABLE FOR, UNAUTHORIZED CHANGES TO OR USES OF THESE PLANS. ALL CHANGES TO THE PLANS MUST BE IN WRITING AND MUST BE APPROVED BY THE PREPARED OF THESE PLANS.  
**CAUTION**

FOR LOCATING & MARKING GAS, ELECTRIC, WATER & TELEPHONE LINES  
FOR BURIED UTILITY INFORMATION  
48 HRS BEFORE YOU DIG  
CALL 1-800-922-1987



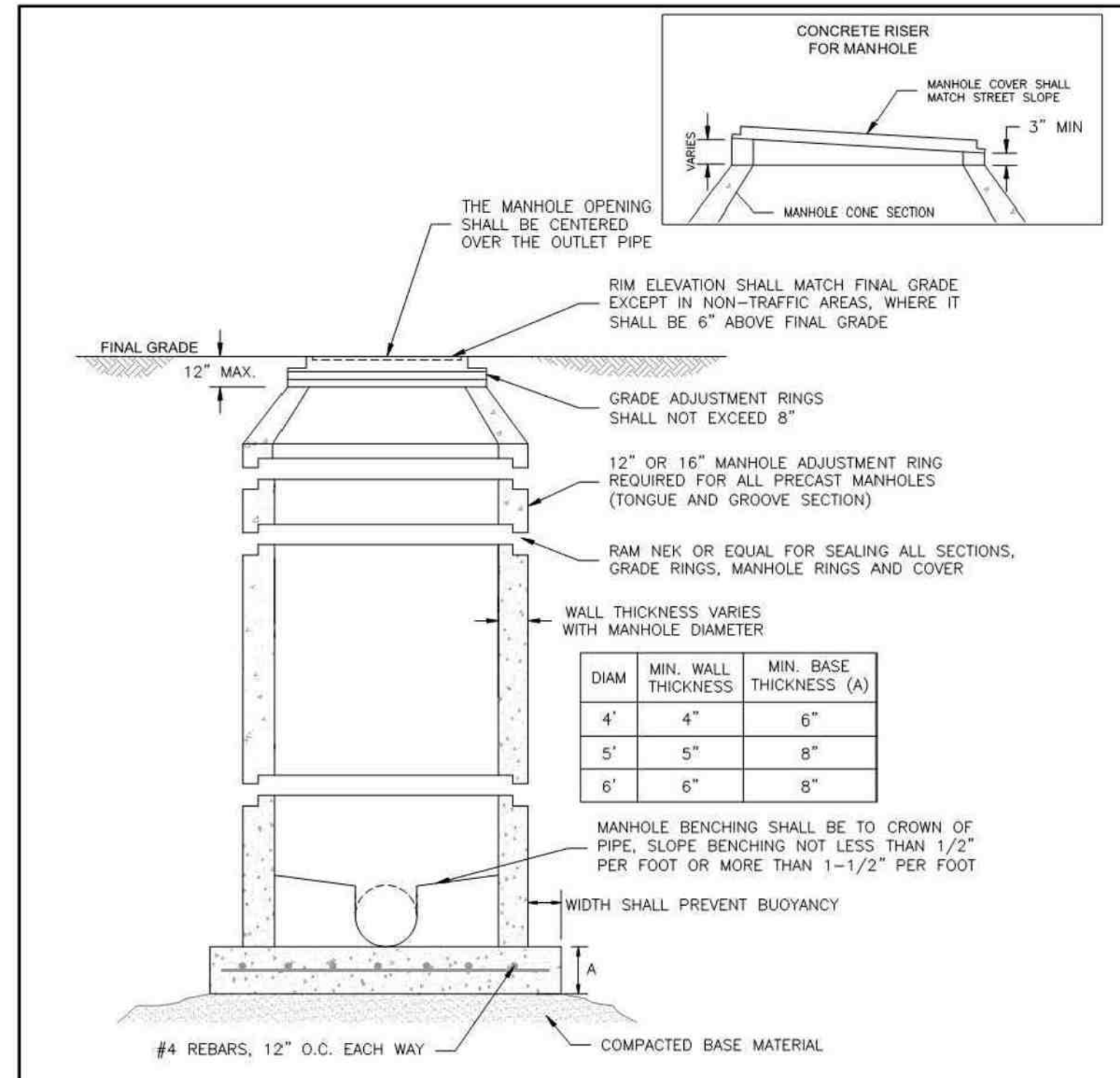


- NOTES:
1. NO JOINTS OF UTILITY MAIN SHALL BE ALLOWED BETWEEN CONCRETE BRIDGING BLOCKS.
  2. CONCRETE AND REINFORCEMENT MATERIALS SHALL BE IN ACCORDANCE WITH CHAPTER 4.



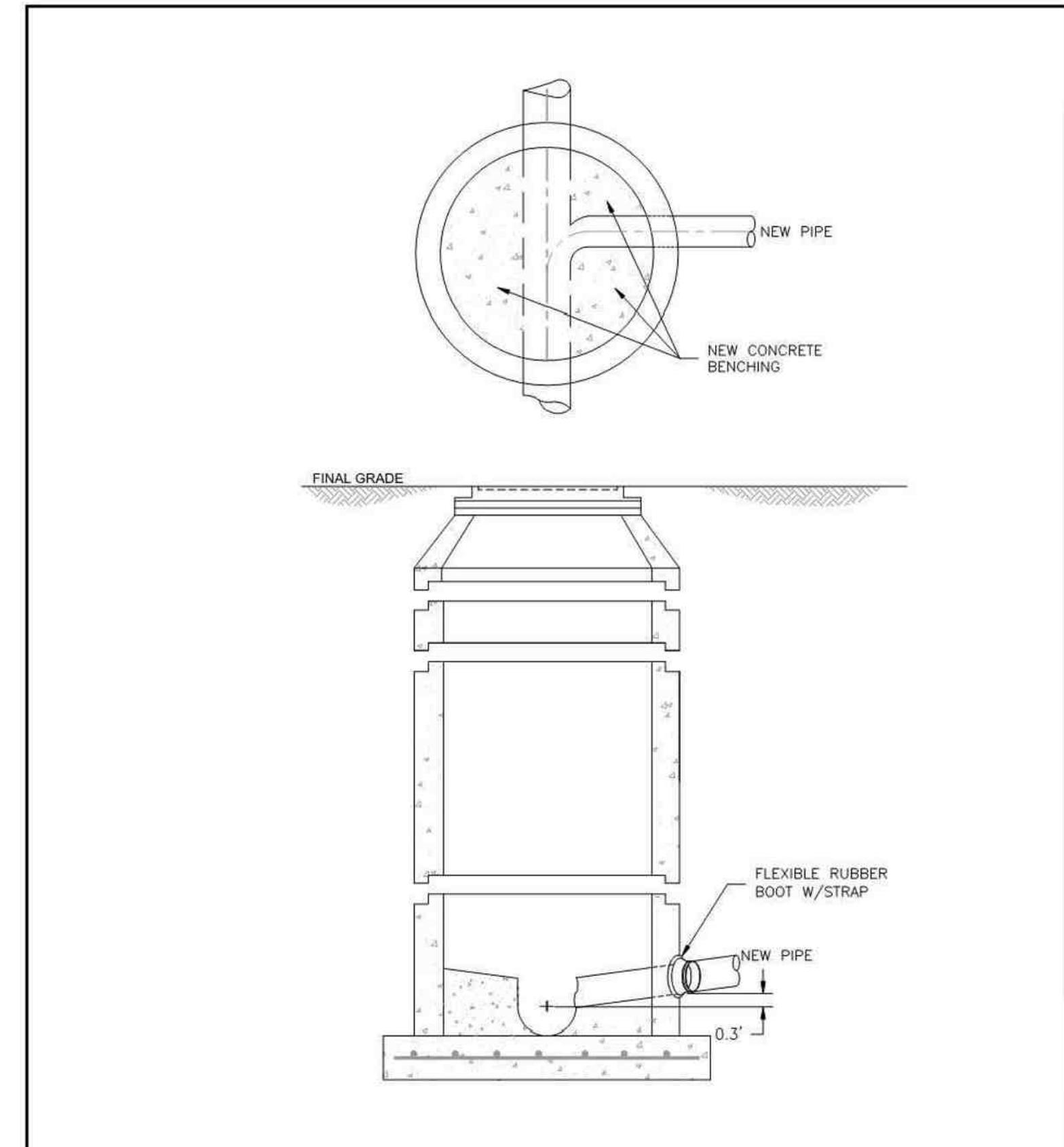
- NOTES:
1. ALL FLOWABLE-FILL SHALL BE IN CONFORMANCE WITH CHAPTER 4.
  2. SEE SECTION 2.5.F.3 FOR UTILITY CROSSING REQUIREMENTS.

Colorado Springs Utilities **PIPE BRIDGING DETAIL W/CONCRETE CRADLES** C2-7  
DATED 5/2015



- NOTES:
1. ALL CONCRETE SHALL HAVE A MINIMUM COMPRESSIVE STRENGTH OF NOT LESS THAN 4000 PSI @ 28 DAYS AND DESIGNED FOR HS-20 LOADING CONDITIONS.
  2. ALL CONCRETE SHALL BE MECHANICALLY VIBRATED.
  3. FOR CAST IN PLACE MANHOLES, DO NOT DROP CONCRETE A DISTANCE OF MORE THAN 5' UNLESS APPROVED BY COLORADO SPRINGS UTILITIES.
  4. 3/4" CRUSHED ROCK REQUIRED UNDER BASE TO A DEPTH OF 6" UP TO SPRINGLINE OF PIPE, 2'-3" RADIUS AROUND BASE.
  5. ALL STEPS SHALL BE REMOVED FOLLOWING CONSTRUCTION.
  6. STRUCTURAL REINFORCEMENT SHALL COMPLY TO ASTM C-478. ASTM C-478 SHALL BE STAMPED ON THE OUTSIDE OF THE MANHOLE.

Colorado Springs Utilities **STANDARD CONCRETE MANHOLE** C3-1  
DATED 5/2015



- NOTES:
1. SEE DETAIL DRAWING C3-1 FOR MANHOLE REQUIREMENTS.

Colorado Springs Utilities **CORE DRILLING INTO AN EXISTING MANHOLE** C3-3  
DATED 7/2020

CLAREMONT BUSINESS PARK 2 FIL. NO. 2  
**SANITARY SEWER DETAILS**  
PROJECT NO. 10-020 DATE: 07/20/23  
SCALE: HORIZONTAL: 1"=30' VERTICAL: 1"=3'  
DESIGNED BY: GW C/P CHECKED BY: VAS  
SHEET 3 OF 3  
SS03

212 N. WASHCATCH AVE., STE 305  
COLORADO SPRINGS, CO 80903  
PHONE: 719.555.5865  
**CIVIL CONSULTANTS, INC.**

VIRGIL A. SANCHEZ, COLORADO, P.E. NO. 37160  
FOR AND ON BEHALF OF  
MKS CIVIL CONSULTANTS, INC.

NO.	DATE	BY	DESCRIPTION	APPROV'D. BY	DATE

THE ENGINEER PREPARING THESE PLANS WILL NOT BE RESPONSIBLE, OR LIABLE FOR, UNAUTHORIZED CHANGES TO OR USES OF THESE PLANS. ALL CHANGES TO THE PLANS MUST BE IN WRITING AND MUST BE APPROVED BY THE PREPARER OF THESE PLANS.

CAUTION