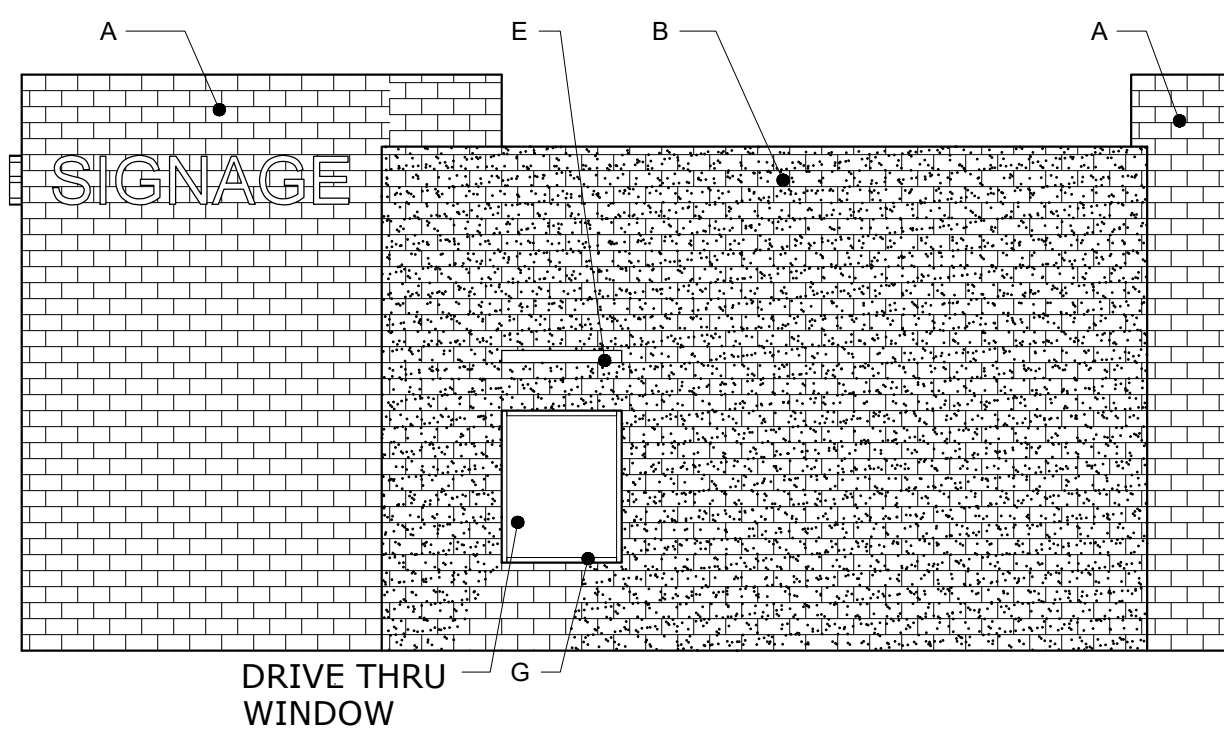


North Elevation

north

- T.O. TOWER 24' - 0"
- T.O. PARAPET 21' - 0"
- T.O. MASONRY 19' - 0"
- B.O. SOFFIT 14' - 0"
- T.O. STOREFRONT 10' - 0"
- FINISH FLOOR 0' - 0"

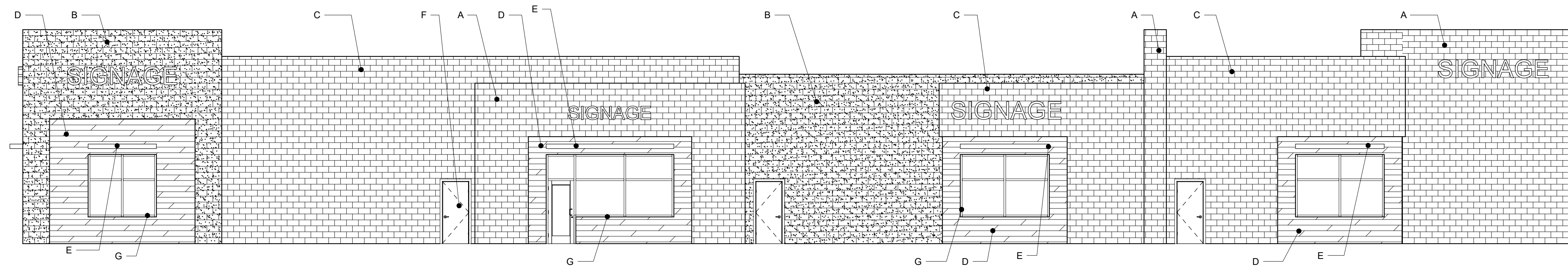


East Elevation

EAST

- T.O. TOWER 24' - 0"
- T.O. PARAPET 21' - 0"
- T.O. CANOPY 12' - 6"
- FINISH FLOOR 0' - 0"

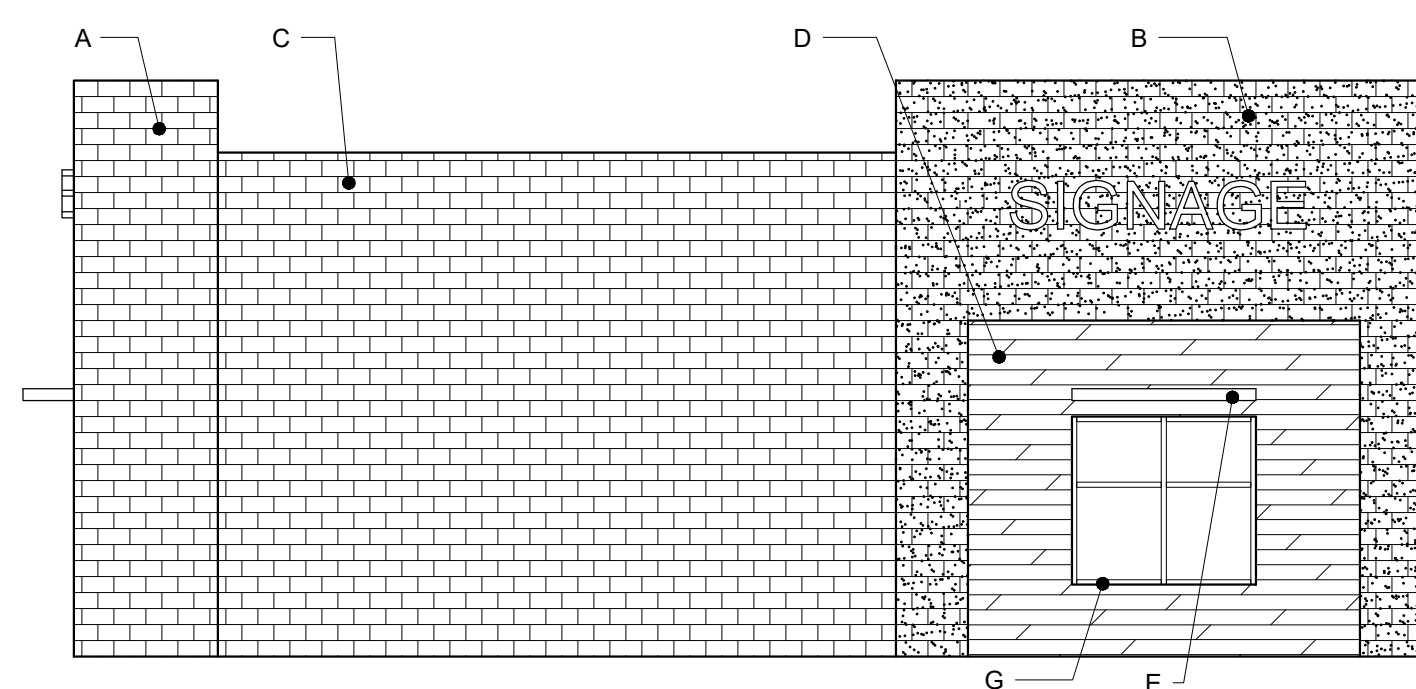
SIGNAGE AS SHOWN ON ELEVATIONS. NO SEPARATE SIGNAGE PROPOSED



South Elevation

- T.O. TOWER 24' - 0"
- T.O. PARAPET 21' - 0"
- B.O. SOFFIT 12' - 0"
- T.O. STOREFRONT 10' - 0"
- FINISH FLOOR 0' - 0"

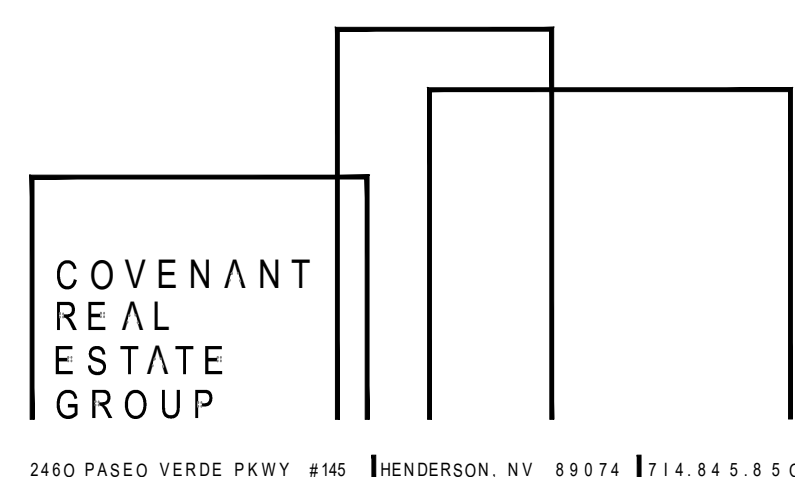
-No sign, except for those signs which do not require a sign permit, shall be erected, re-erected, relocated, replaced, expanded or altered, without first securing a sign permit from PCD.
 -please provide the square footage and dimensions of sign
 -add a diagram showing what the sign will look like



West Elevation

- T.O. TOWER 24' - 0"
- T.O. PARAPET 21' - 0"
- B.O. SOFFIT 14' - 0"
- T.O. CANOPY 11' - 2"
- T.O. STOREFRONT 10' - 0"
- FINISH FLOOR 0' - 0"

- DESIGN NOTES:
1. All mechanical components to be adequately screened with parapet roof.
 2. All signs to be submitted to Design Review for separate review and approval. Signage is shown for reference only.
 3. All exposed metal shall be prefinished or painted. metal trim and accents shall be MTL-1. All exposed electrical equipment, pipes and other building requirements shall be painted to match the wall surface behind. There shall be no exposed metal or stainless steel.
 4. See colored elevations for material and finish call outs.



2460 PASEO VERDE PKWY #145 HENDERSON, NV 89074 | 714.845.8500

Conceptual Elevations Falcon Marketplace- Lot 7 NWC E. Woodmen Road & Meridian Road Falcon, CO 80831

A-1.2 BLACK AND WHITE ELEVATIONS

August 16, 2021 SCALE: 1/8" = 1'-0"
 LOCATION- BOX/2021/ COVENANT/ FALCON /CITY / PLANNING /1ST SUB/BW ELEVATIONS
 The plans, ideas, arrangements and designs indicated or represented by this drawing are owned by, and are the property of COVENANT GROUP, and were created and developed solely for use on, and in connection with this specific project, and shall not be used, in whole or in part, for any purpose for which they were not originally intended without written permission from COVENANT GROUP ©2021.