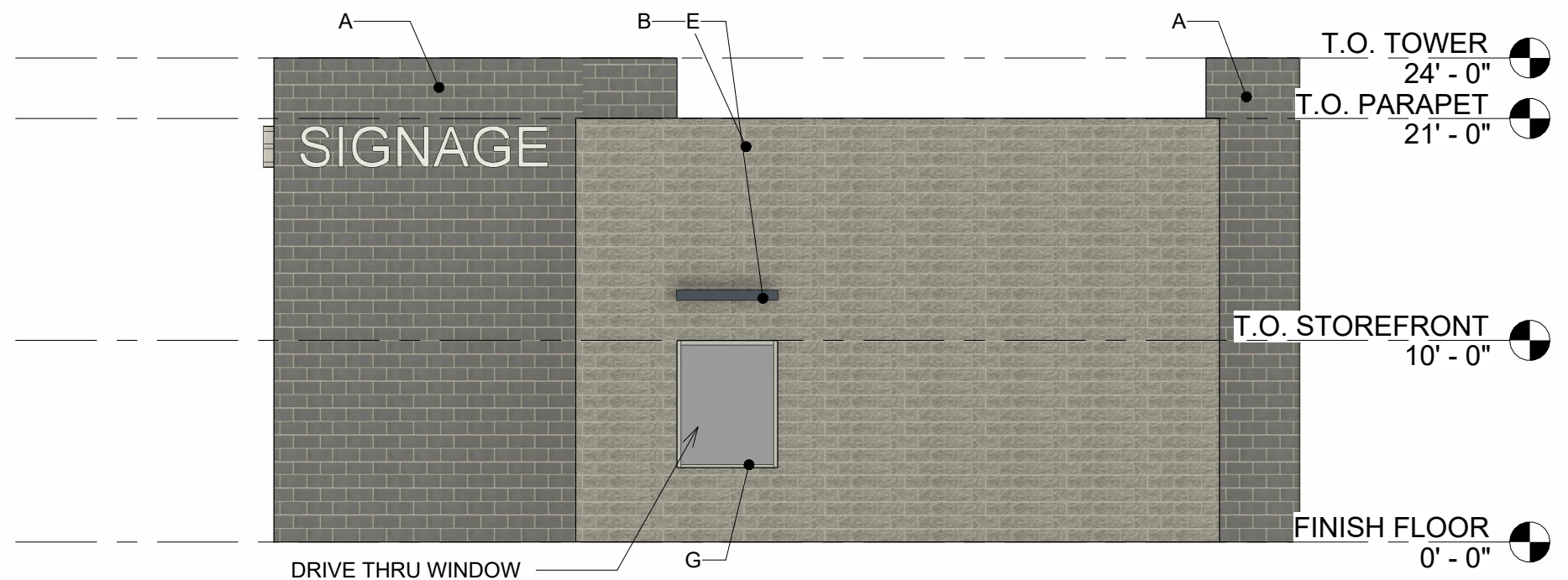
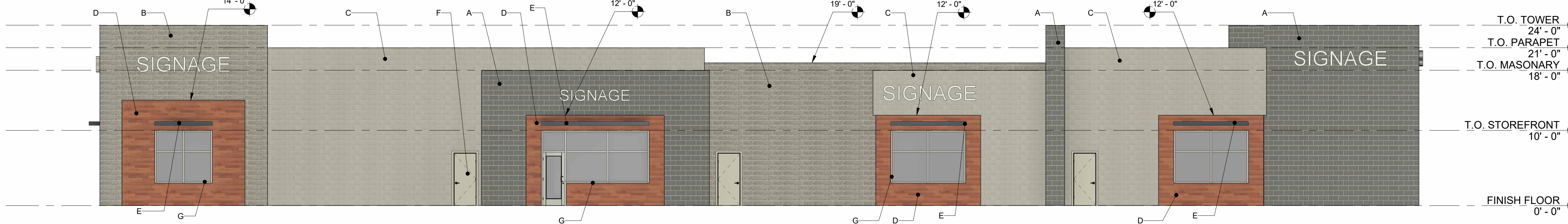


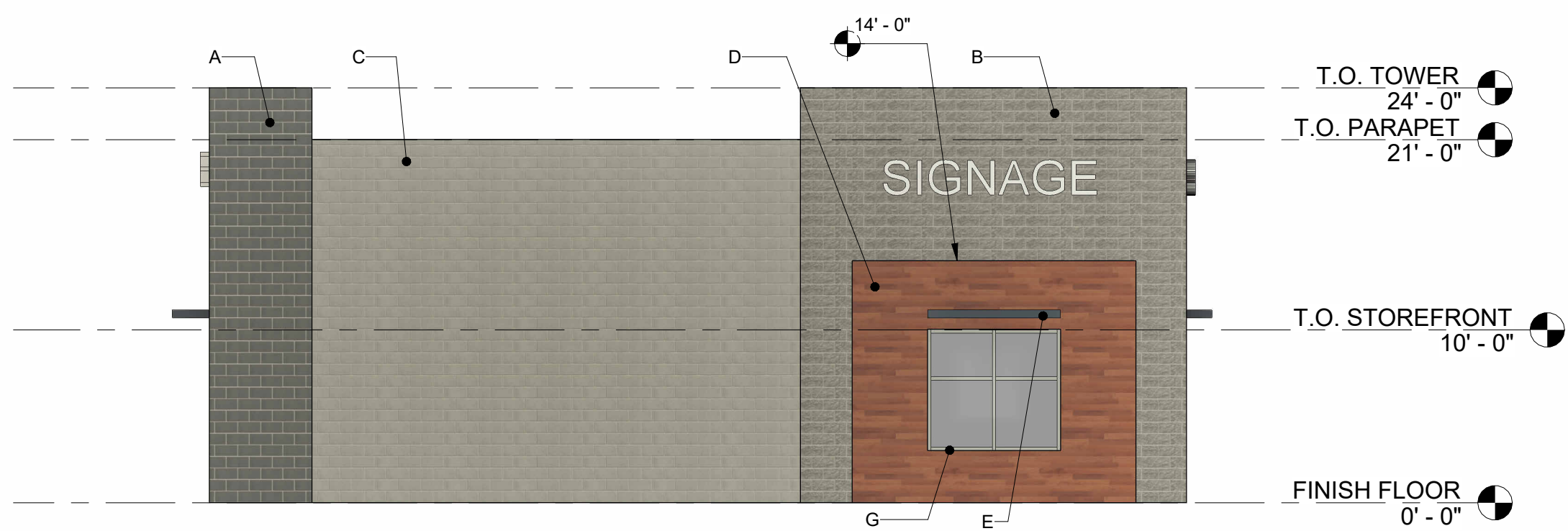
1 North
1/8" = 1'-0"



2 East
1/8" = 1'-0"




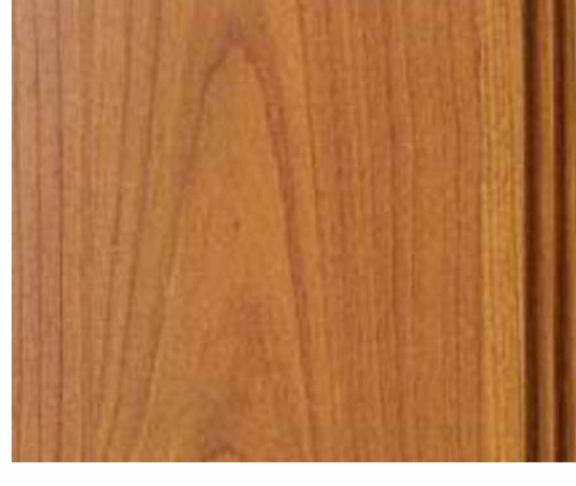





3 South
1/8" = 1'-0"



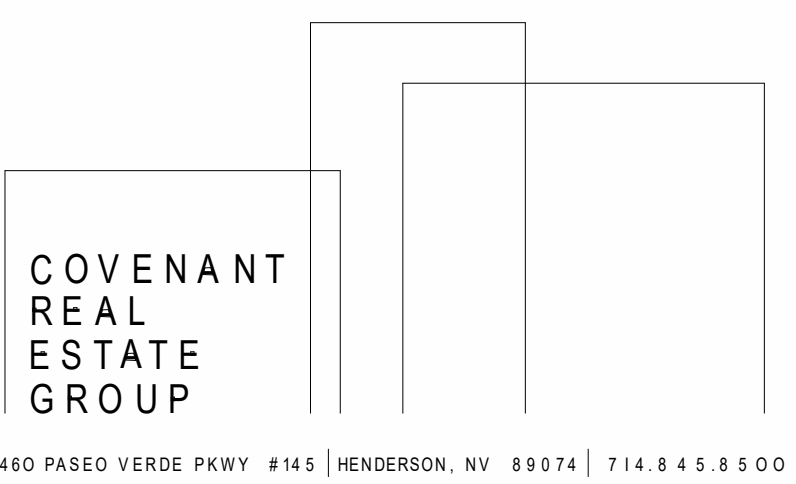
4 West
1/8" = 1'-0"

MATERIAL LIST:

A		SMOOTH FACE CMU: BASALITE- 807 WR
B		SPLIT FACE CMU: BASALITE- 800 WR
C		SMOOTH FACE CMU: BASALITE- 900R
D		METAL SIDING: LONGBOARD- V GROOVE SIDING LIGHT CHERRY
E		PAINT: SW 6244 NAVAL
F		PAINT: SW 6244 MINDFUL GRAY
G		STOREFRONT: ANODIZED CLEAR ALUMINUM

L

PLEASE NOTE THAT THE COLORS SHOWN HERE ARE A GRAPHICAL REPRESENTATION TO SHOW CONTROLS IN MATERIALS ONLY. DUE TO THE NATURE OF ELECTRONIC MEDIA, COLORS MAY VARY DEPENDING ON COMPUTER OR PRINTER USED. ALL LANDSCAPE SHOWN IN THE RENDERINGS IS FOR REFERENCE PURPOSES, FOR THE ACTUAL LANDSCAPE SEE THE LANDSCAPING PLANS.



Falcon Marketplace- Lot 7
NWC E. Woodmen Road & Meridian Road
Falcon, CO 80831

A-1
ELEVATIONS- MATERIALS
June 25, 2021 SCALE: nts
LOCATION- BOX / 2021/ COVENANT/ FALCON/CITY/PLANNING/ELEVATIONS

The plans, ideas, arrangements and designs indicated or represented by this drawing are owned by, and are the property of COVENANT GROUP, and were created and developed solely for use on, and in connection with this specific project, and shall not be used, in whole or in part, for any purpose for which they were not originally intended without written permission from COVENANT GROUP©2021.