

No change from latest
PUD/PP submittal

LSC TRANSPORTATION CONSULTANTS, INC.
2504 East Pikes Peak Avenue, Suite 304
Colorado Springs, CO 80909
(719) 633-2868
FAX (719) 633-5430
E-mail: lsc@lsctrans.com
Website: <http://www.lsctrans.com>

August 18, 2021

Mr. Bryan Kniep
Goodwin Knight
8605 Explorer Drive, #250
Colorado Springs, CO 80920

RE: Cottages at Mesa Ridge
Noise Impact Study
El Paso County, Colorado
LSC #S214581

Dear Mr. Kniep:

In response to your request, LSC Transportation Consultants, Inc. has completed a detailed analysis of the noise impacts of Powers Boulevard (State Highway 21) on the proposed Cottages at Mesa Ridge development. The site is located on the west of the intersection of Powers Boulevard/Mesa Ridge Parkway in El Paso County, Colorado. LSC has completed an evaluation of the noise exposure for submittal to El Paso County and the Colorado Department of Transportation in accordance with the Federal Highway Administration (FHWA) requirements.

LSC used the software program Traffic Noise Model Version 2.5—developed by FHWA—to predict the noise levels at key locations within the proposed development. An elevation of five feet was assumed for the height of the receivers. The receiver locations are shown in Figure 1.

The input data for the noise predictions included traffic volumes, roadway geometry, traffic control, topographic elevations, and the locations of the receivers. The City of Fountain Master Transportation Plan shows Powers Boulevard extended south of Mesa Ridge Parkway. However, as the alignment and timing of the future extension are unknown, this noise model is based on the existing lane geometry and traffic control at the intersection of Powers/Mesa Ridge. The analysis was completed using projected 2040 afternoon peak-hour traffic volumes taken from *The Cottages at Mesa Ridge Traffic Impact Study* by LSC August 18, 2021.

The results of the noise prediction were compared to the noise abatement criteria contained in Exhibit 1 of the *Colorado Department of Transportation Noise Analysis and Abatement Guidelines* dated January 15, 2015. The proposed residential development would be considered a Category “B” land use. The threshold for exterior noise levels for Category B is 66 decibels Leq(h).

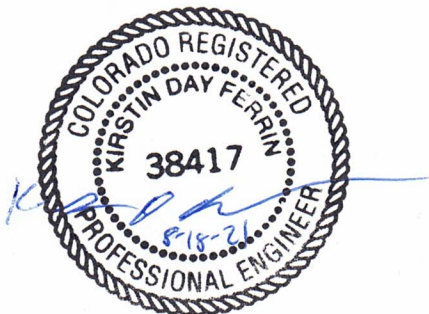
The results of the noise prediction show that in the year 2040, all locations have predicted noise levels that would **not** exceed 66 decibels Leq. Based on the CDOT guidelines no noise mitigation would be required. The noise analysis inputs and outputs are attached.

* * * * *

Please contact me if you have any questions or need further assistance.

Respectfully submitted,

LSC TRANSPORTATION CONSULTANTS, INC.



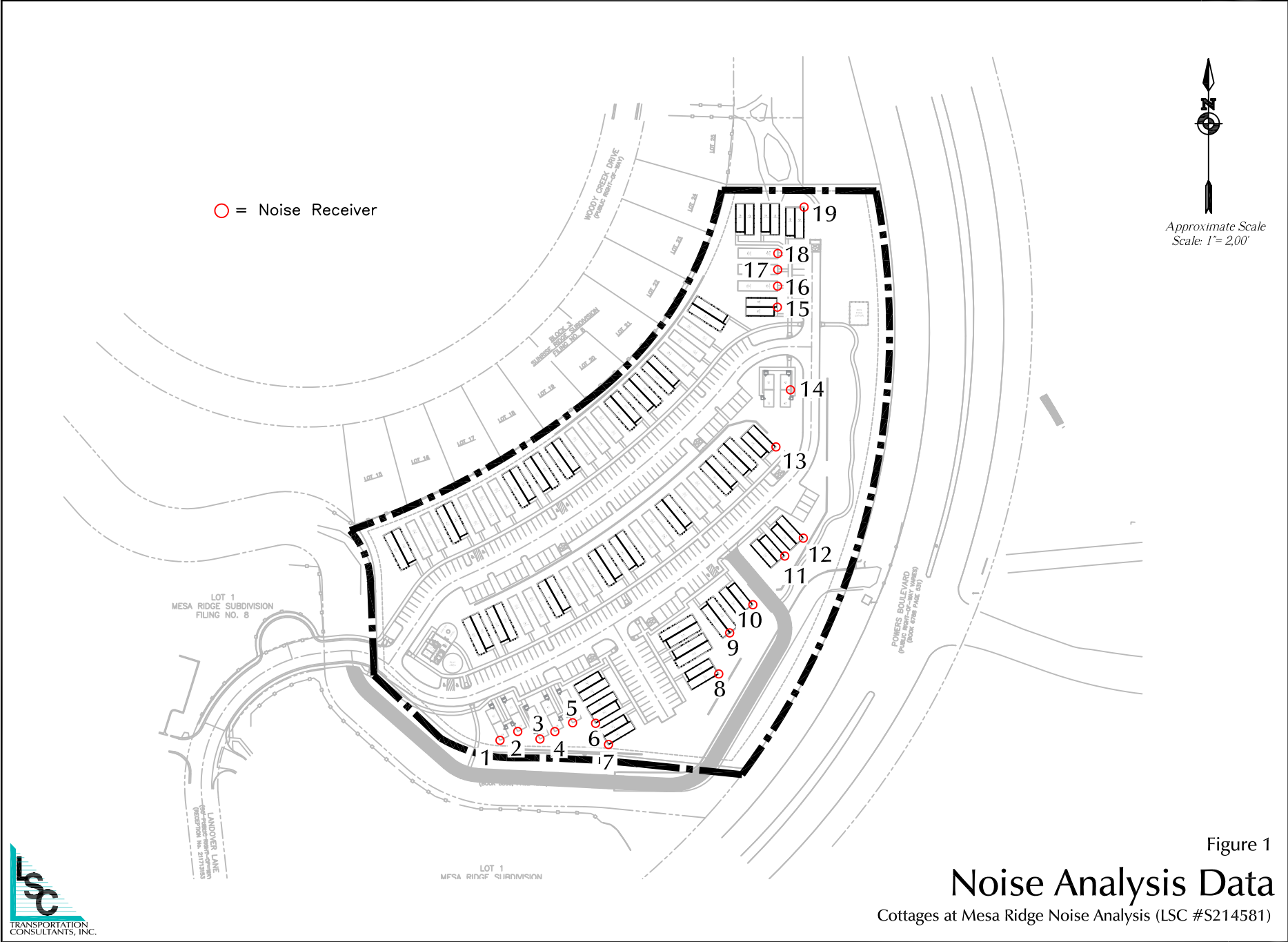
By: Kirstin D. Ferrin, P.E.
Senior Transportation Engineer

KDF:jas

Enclosures: Figure 1
Noise Analysis Inputs/Outputs

Figure 1





Noise Analysis Inputs/Outputs



RESULTS: SOUND LEVELS

Cottages at Mesa Ridge

LSC Transportation Consultants, Inc. KDF						4 August 2021 TNM 2.5 Calculated with TNM 2.5						
RESULTS: SOUND LEVELS												
PROJECT/CONTRACT:		Cottages at Mesa Ridge										
RUN:		2040 PM Peak Hour										
BARRIER DESIGN:		INPUT HEIGHTS				Average pavement type shall be used unless a State highway agency substantiates the use of a different type with approval of FHWA.						
ATMOSPHERICS:		68 deg F, 50% RH										
Receiver												
Name	No.	#DUs	Existing LAeq1h	No Barrier LAeq1h Calculated	Crit'n	Increase over existing Calculated	Crit'n	Type Impact	With Barrier Calculated LAeq1h	Noise Reduction Calculated	Goal	Calculated minus Goal
			dBA	dBA	dBA	dB	dB		dBA	dB	dB	dB
Receiver1	1	1	0.0	58.8	66	58.8	10	----	58.8	0.0	8	-8.0
Receiver2	2	1	0.0	58.9	66	58.9	10	----	58.9	0.0	8	-8.0
Receiver3	3	1	0.0	59.6	66	59.6	10	----	59.6	0.0	8	-8.0
Receiver4	4	1	0.0	59.8	66	59.8	10	----	59.8	0.0	8	-8.0
Receiver5	5	1	0.0	60.1	66	60.1	10	----	60.1	0.0	8	-8.0
Receiver6	6	1	0.0	61.1	66	61.1	10	----	61.1	0.0	8	-8.0
Receiver7	7	1	0.0	62.6	66	62.6	10	----	62.6	0.0	8	-8.0
Receiver8	8	1	0.0	65.0	66	65.0	10	----	65.0	0.0	8	-8.0
Receiver9	9	1	0.0	63.9	66	63.9	10	----	63.9	0.0	8	-8.0
Receiver10	10	1	0.0	64.2	66	64.2	10	----	64.2	0.0	8	-8.0
Receiver11	11	1	0.0	64.7	66	64.7	10	----	64.7	0.0	8	-8.0
Receiver12	12	1	0.0	65.4	66	65.4	10	----	65.4	0.0	8	-8.0
Receiver13	13	1	0.0	62.1	66	62.1	10	----	62.1	0.0	8	-8.0
Receiver14	14	1	0.0	62.6	66	62.6	10	----	62.6	0.0	8	-8.0
Receiver15	15	1	0.0	61.3	66	61.3	10	----	61.3	0.0	8	-8.0
Receiver16	16	1	0.0	61.2	66	61.2	10	----	61.2	0.0	8	-8.0
Receiver17	17	1	0.0	61.2	66	61.2	10	----	61.2	0.0	8	-8.0
Receiver18	18	1	0.0	61.1	66	61.1	10	----	61.1	0.0	8	-8.0
Receiver19	19	1	0.0	62.2	66	62.2	10	----	62.2	0.0	8	-8.0
Dwelling Units		# DUs	Noise Reduction									
			Min	Avg	Max							
			dB	dB	dB							
All Selected		19	0.0	0.0	0.0							

INPUT: TRAFFIC FOR LAeq1h Volumes

Cottages at Mesa Ridge

LSC Transportation Consultants, Inc.				4 August 2021									
KDF				TNM 2.5									
INPUT: TRAFFIC FOR LAeq1h Volumes													
PROJECT/CONTRACT:		Cottages at Mesa Ridge											
RUN:		2040 PM Peak Hour											
Roadway		Points											
Name		Name	No.	Segment									
				Autos		MTrucks		HTrucks		Buses		Motorcycles	
				V	S	V	S	V	S	V	S	V	S
				veh/hr	mph	veh/hr	mph	veh/hr	mph	veh/hr	mph	veh/hr	mph
NB Powers S/O Mesa Ridge		point77	77	2418	55	50	55	25	55	0	0	0	0
		point79	79	2418	55	50	55	25	55	0	0	0	0
		point80	80	2418	55	50	55	25	55	0	0	0	0
		point81	81	2418	55	50	55	25	55	0	0	0	0
		point82	82	2418	55	50	55	25	55	0	0	0	0
		point83	83	2418	55	50	55	25	55	0	0	0	0
		point84	84	2418	55	50	55	25	55	0	0	0	0
		point85	85	2418	55	50	55	25	55	0	0	0	0
		point86	86	2418	55	50	55	25	55	0	0	0	0
		point87	87	2418	55	50	55	25	55	0	0	0	0
		point88	88	2418	55	50	55	25	55	0	0	0	0
		point89	89	2418	55	50	55	25	55	0	0	0	0
		point90	90	2418	55	50	55	25	55	0	0	0	0
		point91	91	2418	55	50	55	25	55	0	0	0	0
		point92	92	2418	55	50	55	25	55	0	0	0	0
		point93	93	2418	55	50	55	25	55	0	0	0	0
		point94	94	2418	55	50	55	25	55	0	0	0	0
		point95	95	2418	55	50	55	25	55	0	0	0	0
		point96	96	2418	55	50	55	25	55	0	0	0	0
		point97	97	2418	55	50	55	25	55	0	0	0	0
		point98	98	2418	55	50	55	25	55	0	0	0	0
		point99	99	2418	55	50	55	25	55	0	0	0	0
		point78	78										

INPUT: TRAFFIC FOR LAeq1h Volumes

Cottages at Mesa Ridge

NB Powers S/O Mesa Ridge Adj to RT	point101	101	1333	55	28	55	14	55	0	0	0	0
	point103	103	1333	55	28	55	14	55	0	0	0	0
	point104	104	1333	55	28	55	14	55	0	0	0	0
	point105	105	1333	55	28	55	14	55	0	0	0	0
	point106	106	1333	55	28	55	14	55	0	0	0	0
	point102	102										
NB RT Powers/Mesa Ridge	point107	107	1085	55	22	55	11	55	0	0	0	0
	point110	110	1085	55	22	55	11	55	0	0	0	0
	point111	111	1085	55	22	55	11	55	0	0	0	0
	point112	112	1085	55	22	55	11	55	0	0	0	0
	point108	108										
NB Powers N/O Mesa Ridge	point113	113	1333	55	28	55	14	55	0	0	0	0
	point116	116	1333	55	28	55	14	55	0	0	0	0
	point117	117	1333	55	28	55	14	55	0	0	0	0
	point118	118	1333	55	28	55	14	55	0	0	0	0
	point119	119	1333	55	28	55	14	55	0	0	0	0
	point120	120	1333	55	28	55	14	55	0	0	0	0
	point121	121	1333	55	28	55	14	55	0	0	0	0
	point122	122	1333	55	28	55	14	55	0	0	0	0
	point123	123	1333	55	28	55	14	55	0	0	0	0
	point124	124	1333	55	28	55	14	55	0	0	0	0
	point125	125	1333	55	28	55	14	55	0	0	0	0
	point126	126	1333	55	28	55	14	55	0	0	0	0
	point127	127	1333	55	28	55	14	55	0	0	0	0
	point128	128	1333	55	28	55	14	55	0	0	0	0
	point129	129	1333	55	28	55	14	55	0	0	0	0
	point130	130	1333	55	28	55	14	55	0	0	0	0
	point131	131	1333	55	28	55	14	55	0	0	0	0
	point132	132	1333	55	28	55	14	55	0	0	0	0
	point133	133	1333	55	28	55	14	55	0	0	0	0
	point134	134	1333	55	28	55	14	55	0	0	0	0
	point114	114										
SB LT	point135	135	670	55	14	55	7	55	0	0	0	0
	point138	138	670	55	14	55	7	55	0	0	0	0
	point139	139	670	55	14	55	7	55	0	0	0	0
	point140	140	670	55	14	55	7	55	0	0	0	0

INPUT: TRAFFIC FOR LAeq1h Volumes

Cottages at Mesa Ridge

	point141	141	670	55	14	55	7	55	0	0	0	0
	point142	142	670	55	14	55	7	55	0	0	0	0
	point143	143	670	55	14	55	7	55	0	0	0	0
	point144	144	670	55	14	55	7	55	0	0	0	0
	point145	145	670	55	14	55	7	55	0	0	0	0
	point146	146	670	55	14	55	7	55	0	0	0	0
	point147	147	670	55	14	55	7	55	0	0	0	0
	point148	148	670	55	14	55	7	55	0	0	0	0
	point149	149	670	55	14	55	7	55	0	0	0	0
	point150	150	670	55	14	55	7	55	0	0	0	0
	point151	151	670	55	14	55	7	55	0	0	0	0
	point152	152	670	55	14	55	7	55	0	0	0	0
	point153	153	670	55	14	55	7	55	0	0	0	0
	point154	154	670	55	14	55	7	55	0	0	0	0
	point155	155	670	55	14	55	7	55	0	0	0	0
	point156	156	670	55	14	55	7	55	0	0	0	0
	point136	136	670	55	14	55	7	55	0	0	0	0
	point137	137										
SB Powers N/O Mesa Ridge	point157	157	679	55	14	55	7	55	0	0	0	0
	point159	159	679	55	14	55	7	55	0	0	0	0
	point160	160	679	55	14	55	7	55	0	0	0	0
	point161	161	679	55	14	55	7	55	0	0	0	0
	point162	162	679	55	14	55	7	55	0	0	0	0
	point163	163	679	55	14	55	7	55	0	0	0	0
	point164	164	679	55	14	55	7	55	0	0	0	0
	point165	165	679	55	14	55	7	55	0	0	0	0
	point166	166	679	55	14	55	7	55	0	0	0	0
	point167	167	679	55	14	55	7	55	0	0	0	0
	point168	0	679	55	14	55	7	55	0	0	0	0
	point169	169	679	55	14	55	7	55	0	0	0	0
	point170	170	679	55	14	55	7	55	0	0	0	0
	point171	171	679	55	14	55	7	55	0	0	0	0
	point172	172	679	55	14	55	7	55	0	0	0	0
	point173	173	679	55	14	55	7	55	0	0	0	0
	point174	174	679	55	14	55	7	55	0	0	0	0
	point175	175	679	55	14	55	7	55	0	0	0	0

INPUT: TRAFFIC FOR LAeq1h Volumes

Cottages at Mesa Ridge

	point176	176	679	55	14	55	7	55	0	0	0	0
	point177	177	679	55	14	55	7	55	0	0	0	0
	point178	178	679	55	14	55	7	55	0	0	0	0
	point158	158										
SB Powers S/O Mesa Ridge	point179	179	1320	55	27	55	14	55	0	0	0	0
	point181	181	1320	55	27	55	14	55	0	0	0	0
	point182	182	1320	55	27	55	14	55	0	0	0	0
	point183	183	1320	55	27	55	14	55	0	0	0	0
	point184	184	1320	55	27	55	14	55	0	0	0	0
	point185	185	1320	55	27	55	14	55	0	0	0	0
	point186	186	1320	55	27	55	14	55	0	0	0	0
	point187	187	1320	55	27	55	14	55	0	0	0	0
	point188	188	1320	55	27	55	14	55	0	0	0	0
	point189	189	1320	55	27	55	14	55	0	0	0	0
	point190	190	1320	55	27	55	14	55	0	0	0	0
	point191	191	1320	55	27	55	14	55	0	0	0	0
	point192	192	1320	55	27	55	14	55	0	0	0	0
	point193	193	1320	55	27	55	14	55	0	0	0	0
	point194	194	1320	55	27	55	14	55	0	0	0	0
	point195	195	1320	55	27	55	14	55	0	0	0	0
	point196	196	1320	55	27	55	14	55	0	0	0	0
	point197	197	1320	55	27	55	14	55	0	0	0	0
	point198	198	1320	55	27	55	14	55	0	0	0	0
	point199	199	1320	55	27	55	14	55	0	0	0	0
	point200	200	1320	55	27	55	14	55	0	0	0	0
	point201	201	1320	55	27	55	14	55	0	0	0	0
	point202	202	1320	55	27	55	14	55	0	0	0	0
	point203	203	1320	55	27	55	14	55	0	0	0	0
	point204	204	1320	55	27	55	14	55	0	0	0	0
	point205	205	1320	55	27	55	14	55	0	0	0	0
	point206	206	1320	55	27	55	14	55	0	0	0	0
	point207	207	1320	55	27	55	14	55	0	0	0	0
	point180	180										
NB RT Accel Powers/Mesa Ridge	point208	208	398	55	8	55	4	55	0	0	0	0
	point211	211	398	55	8	55	4	55	0	0	0	0
	point212	212	398	55	8	55	4	55	0	0	0	0

INPUT: TRAFFIC FOR LAeq1h Volumes**Cottages at Mesa Ridge**

	point213	213	398	55	8	55	4	55	0	0	0	0
	point214	214	398	55	8	55	4	55	0	0	0	0
	point215	215	398	55	8	55	4	55	0	0	0	0
	point216	216	398	55	8	55	4	55	0	0	0	0
	point217	217	398	55	8	55	4	55	0	0	0	0
	point218	218	398	55	8	55	4	55	0	0	0	0
	point219	219	398	55	8	55	4	55	0	0	0	0
	point220	220	398	55	8	55	4	55	0	0	0	0
	point221	221	398	55	8	55	4	55	0	0	0	0
	point222	222	398	55	8	55	4	55	0	0	0	0
	point223	223	398	55	8	55	4	55	0	0	0	0
	point224	224	398	55	8	55	4	55	0	0	0	0
	point225	225	398	55	8	55	4	55	0	0	0	0
	point226	226	398	55	8	55	4	55	0	0	0	0
	point209	209	398	55	8	55	4	55	0	0	0	0
	point210	210										

INPUT: ROADWAYS

Cottages at Mesa Ridge

LSC Transportation Consultants, Inc.					4 August 2021					
KDF					TNM 2.5					

INPUT: ROADWAYS										Average pavement type shall be used unless a State highway agency substantiates the use of a different type with the approval of FHWA
PROJECT/CONTRACT:		Cottages at Mesa Ridge								
RUN:		2040 PM Peak Hour								

Roadway Name	Width	Points			Coordinates (pavement)			Flow Control			Segment	
		Name	No.		X	Y	Z	Control Device	Speed Constraint	Percent Vehicles Affected		Pvmt Type
	ft				ft	ft	ft		mph	%		
NB Powers S/O Mesa Ridge	24.0	point77	77		14,484.1	13,590.4	5,700.00				Average	
		point79	79		14,585.9	13,673.6	5,702.00				Average	
		point80	80		14,691.5	13,760.4	5,704.00				Average	
		point81	81		14,766.9	13,822.2	5,706.00				Average	
		point82	82		14,833.3	13,876.8	5,708.00				Average	
		point83	83		14,890.3	13,923.3	5,710.00				Average	
		point84	84		14,946.3	13,968.9	5,712.00				Average	
		point85	85		14,991.0	14,005.4	5,714.00				Average	
		point86	86		15,034.7	14,041.2	5,716.00				Average	
		point87	87		15,072.5	14,072.1	5,718.00				Average	
		point88	88		15,103.0	14,097.3	5,720.00				Average	
		point89	89		15,136.4	14,125.1	5,722.00				Average	
		point90	90		15,167.5	14,151.1	5,724.00				Average	
		point91	91		15,198.1	14,176.7	5,726.00				Average	
		point92	92		15,233.0	14,205.7	5,728.00				Average	
		point93	93		15,261.4	14,232.3	5,730.00				Average	
		point94	94		15,288.3	14,259.3	5,732.00				Average	
		point95	95		15,315.0	14,287.4	5,734.00				Average	
		point96	96		15,340.0	14,315.6	5,736.00				Average	
		point97	97		15,362.6	14,343.4	5,738.00				Average	
		point98	98		15,385.1	14,372.5	5,740.00				Average	
		point99	99		15,408.0	14,403.4	5,742.00				Average	
		point78	78		15,433.8	14,444.5	5,744.00					
NB Powers S/O Mesa Ridge Adj to RT	24.0	point101	101		15,434.0	14,444.5	5,744.00				Average	
		point103	103		15,452.1	14,473.6	5,746.00				Average	

INPUT: ROADWAYS

Cottages at Mesa Ridge

		point104	104	15,468.6	14,501.9	5,748.00				Average
		point105	105	15,485.7	14,532.9	5,750.00				Average
		point106	106	15,503.7	14,567.8	5,752.00				Average
		point102	102	15,520.9	14,608.1	5,754.00				
NB RT Powers/Mesa Ridge	12.0	point107	107	15,437.4	14,428.2	5,744.00				Average
		point110	110	15,457.2	14,459.0	5,746.00				Average
		point111	111	15,475.4	14,489.5	5,748.00				Average
		point112	112	15,494.0	14,523.0	5,750.00				Average
		point108	108	15,512.6	14,558.8	5,752.00				
NB Powers N/O Mesa Ridge	24.0	point113	113	15,523.0	14,613.2	5,754.00	Signal	0.00	50	Average
		point116	116	15,532.0	14,635.4	5,756.00				Average
		point117	117	15,545.2	14,674.0	5,758.00				Average
		point118	118	15,557.6	14,714.5	5,760.00				Average
		point119	119	15,567.6	14,750.2	5,762.00				Average
		point120	120	15,576.7	14,785.5	5,764.00				Average
		point121	121	15,585.2	14,822.5	5,766.00				Average
		point122	122	15,593.8	14,866.0	5,768.00				Average
		point123	123	15,599.8	14,903.8	5,770.00				Average
		point124	124	15,604.6	14,941.7	5,772.00				Average
		point125	125	15,608.0	14,977.6	5,774.00				Average
		point126	126	15,610.4	15,016.6	5,776.00				Average
		point127	127	15,611.5	15,062.8	5,778.00				Average
		point128	128	15,611.2	15,102.8	5,780.00				Average
		point129	129	15,609.3	15,146.5	5,782.00				Average
		point130	130	15,606.2	15,187.9	5,784.00				Average
		point131	131	15,599.8	15,239.2	5,786.00				Average
		point132	132	15,589.9	15,296.3	5,788.00				Average
		point133	133	15,575.4	15,364.5	5,790.00				Average
		point134	134	15,561.9	15,418.2	5,792.00				Average
		point114	114	15,545.3	15,486.2	5,794.00				
SB LT	12.0	point135	135	15,496.7	15,498.6	5,796.00				Average
		point138	138	15,508.3	15,448.3	5,794.00				Average
		point139	139	15,521.3	15,395.7	5,792.00				Average
		point140	140	15,531.5	15,355.6	5,790.00				Average
		point141	141	15,543.5	15,304.3	5,788.00				Average
		point142	142	15,552.5	15,259.3	5,786.00				Average
		point143	143	15,559.5	15,215.1	5,784.00				Average
		point144	144	15,564.5	15,172.2	5,782.00				Average
		point145	145	15,567.8	15,132.8	5,780.00				Average

INPUT: ROADWAYS

Cottages at Mesa Ridge

		point146	146	15,570.0	15,093.0	5,778.00				Average
		point147	147	15,570.6	15,051.3	5,776.00				Average
		point148	148	15,570.1	15,009.1	5,774.00				Average
		point149	149	15,568.4	14,970.9	5,772.00				Average
		point150	150	15,565.3	14,933.2	5,770.00				Average
		point151	151	15,560.8	14,897.2	5,768.00				Average
		point152	152	15,554.7	14,859.2	5,766.00				Average
		point153	153	15,547.7	14,823.3	5,764.00				Average
		point154	154	15,539.4	14,786.6	5,762.00				Average
		point155	155	15,529.8	14,749.1	5,760.00				Average
		point156	156	15,519.3	14,713.3	5,758.00				Average
		point136	136	15,508.8	14,681.4	5,756.00				Average
		point137	137	15,498.0	14,652.3	5,754.00				
SB Powers N/O Mesa Ridge	24.0	point157	157	15,469.2	15,521.1	5,798.00				Average
		point159	159	15,478.8	15,478.2	5,796.00				Average
		point160	160	15,490.5	15,428.3	5,794.00				Average
		point161	161	15,501.3	15,384.9	5,792.00				Average
		point162	162	15,509.7	15,352.1	5,790.00				Average
		point163	163	15,520.4	15,306.9	5,788.00				Average
		point164	164	15,528.8	15,266.4	5,786.00				Average
		point165	165	15,535.8	15,225.2	5,784.00				Average
		point166	166	15,540.7	15,187.6	5,782.00				Average
		point167	167	15,544.7	15,146.8	5,780.00				Average
		point168	168	15,547.3	15,109.5	5,778.00				Average
		point169	169	15,548.6	15,064.6	5,776.00				Average
		point170	170	15,548.4	15,027.5	5,774.00				Average
		point171	171	15,547.3	14,989.6	5,772.00				Average
		point172	172	15,545.2	14,954.8	5,770.00				Average
		point173	173	15,541.2	14,917.2	5,768.00				Average
		point174	174	15,535.3	14,876.5	5,766.00				Average
		point175	175	15,528.7	14,840.5	5,764.00				Average
		point176	176	15,521.6	14,806.7	5,762.00				Average
		point177	177	15,512.9	14,771.2	5,760.00				Average
		point178	178	15,503.0	14,735.2	5,758.00				Average
		point158	158	15,490.8	14,696.7	5,756.00				
SB Powers S/O Mesa Ridge	24.0	point179	179	15,489.0	14,691.4	5,756.00	Signal	0.00	50	Average
		point181	181	15,480.8	14,668.8	5,754.00				Average
		point182	182	15,468.2	14,637.0	5,752.00				Average
		point183	183	15,454.1	14,604.4	5,750.00				Average

INPUT: ROADWAYS

Cottages at Mesa Ridge

		point184	184	15,437.4	14,569.0	5,748.00				Average	
		point185	185	15,421.5	14,537.8	5,746.00				Average	
		point186	186	15,405.2	14,508.4	5,744.00				Average	
		point187	187	15,385.6	14,475.0	5,742.00				Average	
		point188	188	15,366.7	14,444.7	5,740.00				Average	
		point189	189	15,346.4	14,414.3	5,738.00				Average	
		point190	190	15,323.4	14,382.7	5,736.00				Average	
		point191	191	15,301.1	14,354.0	5,734.00				Average	
		point192	192	15,279.1	14,327.0	5,732.00				Average	
		point193	193	15,251.8	14,295.3	5,730.00				Average	
		point194	194	15,226.0	14,267.9	5,728.00				Average	
		point195	195	15,193.6	14,236.6	5,726.00				Average	
		point196	196	15,159.0	14,205.8	5,724.00				Average	
		point197	197	15,123.5	14,175.9	5,722.00				Average	
		point198	198	15,083.3	14,143.6	5,720.00				Average	
		point199	199	15,047.0	14,113.9	5,718.00				Average	
		point200	200	15,009.1	14,082.7	5,716.00				Average	
		point201	201	14,964.2	14,046.5	5,714.00				Average	
		point202	202	14,913.9	14,005.7	5,712.00				Average	
		point203	203	14,865.9	13,966.4	5,710.00				Average	
		point204	204	14,804.1	13,916.0	5,708.00				Average	
		point205	205	14,742.6	13,865.8	5,706.00				Average	
		point206	206	14,673.1	13,808.7	5,704.00				Average	
		point207	207	14,569.3	13,723.8	5,702.00				Average	
		point180	180	14,469.3	13,642.5	5,700.00					
NB RT Accel Powers/Mesa Ridge	12.0	point208	208	15,560.2	14,662.1	5,758.00	Onramp	0.00	100	Average	
		point211	211	15,570.9	14,696.3	5,760.00				Average	
		point212	212	15,581.8	14,733.7	5,762.00				Average	
		point213	213	15,591.8	14,771.6	5,764.00				Average	
		point214	214	15,600.1	14,806.4	5,766.00				Average	
		point215	215	15,608.8	14,848.3	5,768.00				Average	
		point216	216	15,615.9	14,889.8	5,770.00				Average	
		point217	217	15,621.0	14,927.1	5,772.00				Average	
		point218	218	15,624.8	14,963.2	5,774.00				Average	
		point219	219	15,627.9	15,005.5	5,776.00				Average	
		point220	220	15,629.4	15,049.4	5,778.00				Average	
		point221	221	15,629.4	15,088.7	5,780.00				Average	
		point222	222	15,628.2	15,130.9	5,782.00				Average	
		point223	223	15,625.2	15,177.4	5,784.00				Average	

INPUT: ROADWAYS

Cottages at Mesa Ridge

		point224	224	15,618.9	15,233.4	5,786.00				Average	
		point225	225	15,608.2	15,296.6	5,788.00				Average	
		point226	226	15,592.2	15,371.7	5,790.00				Average	
		point209	209	15,576.1	15,435.5	5,792.00				Average	
		point210	210	15,559.2	15,505.2	5,794.00					

INPUT: RECEIVERS

Cottages at Mesa Ridge

LSC Transportation Consultants, Inc. KDF							4 August 2021 TNM 2.5				
INPUT: RECEIVERS											
PROJECT/CONTRACT: Cottages at Mesa Ridge											
RUN: 2040 PM Peak Hour											
Receiver											
Name	No.	#DUs	Coordinates (ground)			Height above Ground	Input Sound Levels and Criteria				Active in Calc.
			X	Y	Z		Existing LAeq1h	Impact Criteria LAeq1h	Sub'l	NR Goal	
			ft	ft	ft	ft	dBA	dBA	dB	dB	
Receiver1	1	1	14,878.6	14,433.9	5,756.00	4.92	0.00	66	10.0	8.0	Y
Receiver2	2	1	14,905.4	14,447.3	5,756.00	4.92	0.00	66	10.0	8.0	Y
Receiver3	3	1	14,939.0	14,435.9	5,757.00	4.92	0.00	66	10.0	8.0	Y
Receiver4	4	1	14,961.4	14,447.1	5,757.00	4.92	0.00	66	10.0	8.0	Y
Receiver5	5	1	14,988.3	14,460.4	5,758.00	4.92	0.00	66	10.0	8.0	Y
Receiver6	6	1	15,022.9	14,459.6	5,760.00	4.92	0.00	66	10.0	8.0	Y
Receiver7	7	1	15,042.4	14,427.5	5,760.00	4.92	0.00	66	10.0	8.0	Y
Receiver8	8	1	15,208.9	14,534.1	5,760.50	4.92	0.00	66	10.0	8.0	Y
Receiver9	9	1	15,225.5	14,596.1	5,760.00	4.92	0.00	66	10.0	8.0	Y
Receiver10	10	1	15,260.5	14,638.5	5,760.00	4.92	0.00	66	10.0	8.0	Y
Receiver11	11	1	15,308.7	14,712.1	5,761.00	4.92	0.00	66	10.0	8.0	Y
Receiver12	12	1	15,336.6	14,739.1	5,761.50	4.92	0.00	66	10.0	8.0	Y
Receiver13	13	1	15,295.3	14,876.7	5,762.00	4.92	0.00	66	10.0	8.0	Y
Receiver14	14	1	15,317.1	14,962.8	5,776.00	4.92	0.00	66	10.0	8.0	Y
Receiver15	15	1	15,297.5	15,087.7	5,779.50	4.92	0.00	66	10.0	8.0	Y
Receiver16	16	1	15,297.8	15,119.3	5,780.00	4.92	0.00	66	10.0	8.0	Y
Receiver17	17	1	15,298.0	15,144.3	5,780.50	4.92	0.00	66	10.0	8.0	Y
Receiver18	18	1	15,298.2	15,168.7	5,781.00	4.92	0.00	66	10.0	8.0	Y
Receiver19	19	1	15,337.8	15,238.7	5,781.00	4.92	0.00	66	10.0	8.0	Y