

NOTE: ALL EXISTING UNDERGROUND AND ABOVE GROUND UTILITY LOCATIONS, INVERTS AND SIZES ARE APPROXIMATE ONLY AND MUST BE FIELD VERIFIED PRIOR TO CONSTRUCTION. TIE IN POINTS SHALL BE POTHOLED AND LOCATIONS, INVERTS AND SIZES SHALL BE FIELD VERIFIED BY THE CONTRACTOR PRIOR TO CONSTRUCTION.

UTILITY SERVICE PLAN NOTES:

THE CONTRACTOR SHALL NOTIFY CHEROKEE METRO DISTRICT'S INSPECTIONS OFFICE (NORTH: 668-4386 OR SOUTH: 668-4658) A MINIMUM OF 48 HOURS PRIOR TO THE START OF CONSTRUCTION.

GENERAL:

- ALL CONSTRUCTION METHODS AND MATERIALS SHALL MEET CHEROKEE METROPOLITAN DISTRICT'S STANDARDS.
- IF FIELD CONDITIONS ARE FOUND TO BE DIFFERENT THAN SHOWN ON THE PLANS, THE CONTRACTOR SHALL NOTIFY THE INSPECTOR AND THE DESIGN ENGINEER IMMEDIATELY.
- THE CONTRACTOR IS RESPONSIBLE FOR ANY DAMAGE TO ANY UTILITY FACILITIES AS A RESULT OF HIS ACTIONS. THE CONTRACTOR SHALL MAKE ALL THE REQUIRED REPAIRS IMMEDIATELY TO THE SATISFACTION OF CHEROKEE METRO DISTRICT.
- ALL FIELD STAKING SHALL COMPLY WITH THE WATER/WASTEWATER LESS.
- CORROSION PROTECTION MEASURES SHALL COMPLY WITH THE WATER/WASTEWATER LESS.
- FINAL LOCATION OF ALL WASTEWATER AND WATER SERVICES SHALL BE APPROVED IN THE FIELD BY THE CHEROKEE METRO DISTRICT INSPECTOR.
- ALL TRENCH BACKFILL AND COMPACTION SHALL BE IN ACCORDANCE WITH SECTION 206 OF THE CITY OF COLORADO SPRINGS STANDARD SPECIFICATIONS MANUAL AND SECTION 5.18 OF THE WATER LESS.

WASTEWATER:

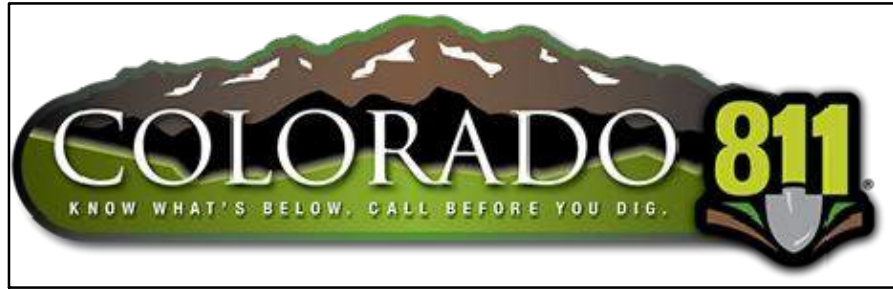
- SERVICE STUBS SHALL BE INSTALLED A MINIMUM OF SEVEN FEET (7') INTO THE PROPERTY, UNLESS OTHERWISE SHOWN, AND THE END OF THE STUB SHALL BE MARKED WITH A 2"x4"x12" STEEL OR WOODEN POST.
- SERVICES SHALL BE CONNECTED A MINIMUM OF FIVE FEET (5') FROM THE OUTSIDE EDGE OF ANY MANHOLE ON THE MAIN LINE AND SHALL MAINTAIN TWO FEET (2') OF SEPARATION BETWEEN TAPS CENTER TO CENTER.
- ALL CLEANOUTS SHALL BE THE SAME SIZE AS THE SERVICE LINE.
- THE CONTRACTOR SHALL NOTIFY EL PASO COUNTY DEPARTMENT OF HEALTH AND ENVIRONMENT WHEN ANY SEPTIC TANK IS TO BE ABANDONED AND PAY ALL FEES NECESSARY TO OBTAIN A PERMIT.

WATER:

- SERVICE STUBS SHALL BE INSTALLED WITH THE CURB STOP AT OR NEAR PROPERTY LINE AND SHALL NOT BE INSTALLED WITHIN DRIVEWAYS OR SIDEWALKS (SEE DETAIL DRAWING B2-3).
- SERVICE TAPS SHALL BE MADE A MINIMUM OF THREE FEET (3') FROM THE BELL OR APPURTENANCE ON THE WATER MAIN. TAPS SHALL BE A MINIMUM OF THREE FEET (3') APART ON THE SAME SIDE OF THE WATER MAIN AND A MINIMUM OF ONE-AND-A-HALF FEET (1.5') WHEN TAPS ARE MADE ON OPPOSITE SIDES OF THE WATER MAIN.
- ALL SERVICES FOR COMMERCIAL USE AND SOME RESIDENTIAL USES REQUIRE INSTALLATION OF A BACKFLOW PREVENTION ASSEMBLY IMMEDIATELY AFTER THE METER. THE BACKFLOW PREVENTION ASSEMBLY SHALL BE APPROVED BY THE FOUNDATION FOR CROSS-CONNECTION CONTROL AND HYDRAULIC RESEARCH OF THE UNIVERSITY OF SOUTHERN CALIFORNIA (USC-FCOCHR) AND INSTALLED IN ACCORDANCE WITH THIS LISTING. PLEASE REFERENCE THE WATER LINE EXTENSION STANDARDS FOR ADDITIONAL REQUIREMENTS.
- ALL TAPS ON CHEROKEE METRO DISTRICT WATER MAINS SHALL BE PERFORMED BY CHEROKEE METRO DISTRICT. ALL OTHER TAPS SHALL BE PERFORMED BY THE CONTRACTOR.
- ANY ABANDONED SERVICES MUST BE PHYSICALLY DISCONNECTED AT THE MAIN. ANY NECESSARY REPAIRS TO THE MAIN AND/OR SHUT DOWN OF THE TAPPING VALVE SHALL BE AS DIRECTED BY CHEROKEE METRO DISTRICT.
- ALL WATER SERVICE LINES SHOULD ENTER THE BUILDING WITHIN 3 FEET OF AN EXTERIOR WALL. EXPOSED WATER PLUMBING SHALL BE MINIMIZED INSIDE THE BUILDING PRIOR TO THE WATER METER AND/OR APPROVED BACKFLOW PREVENTION ASSEMBLY OR METHOD.
- ALL HDPE WATER SERVICE LINES MUST EXTEND A MINIMUM OF 6 INCHES ABOVE THE FLOOR AND BE 90 DEGREES FROM THE FLOOR PLAN TO ALLOW FOR BRACING AND TRANSITION TO THE METER LOOP ASSEMBLY.

WATER PLAN NOTES:

- ALL CONSTRUCTION METHODS AND MATERIALS SHALL MEET COLORADO SPRINGS UTILITIES' WATER LINE EXTENSION AND SERVICE STANDARDS (WATER LESS).
- THE CONTRACTOR SHALL OBTAIN LOCATES PRIOR TO ANY EXCAVATION.
- IF FIELD CONDITIONS ARE FOUND TO BE DIFFERENT THAN SHOWN ON THE PLANS, THE CONTRACTOR SHALL NOTIFY THE INSPECTOR AND THE ENGINEER OF RECORD IMMEDIATELY.
- NO TREES OR STRUCTURES ARE PERMITTED WITHIN FIFTEEN FEET (15') OF A WATER MAIN.
- THE CONTRACTOR IS RESPONSIBLE FOR ANY DAMAGE TO ANY UTILITY FACILITIES AS A RESULT OF HIS ACTIONS. THE CONTRACTOR SHALL MAKE ALL THE REQUIRED REPAIRS IMMEDIATELY TO THE SATISFACTION OF CHEROKEE METRO DISTRICT.
- ALL FIELD STAKING SHALL COMPLY WITH THE WATER LESS.
- THE CONTRACTOR SHALL MAKE THEIR BEST EFFORT TO ENSURE THAT WATER SERVICE TO ADJACENT PROPERTIES IS MAINTAINED DURING CONSTRUCTION.
- CORROSION PROTECTION MEASURES SHALL COMPLY WITH THE WATER LESS.
- NO SERVICE TAPS WILL BE ALLOWED UNTIL THE MAIN IS EXTENDED TO THE NEXT MAIN-LINE VALVE.
- NO SERVICE TAPS SHALL BE MADE UNTIL AUTHORIZATION HAS BEEN GRANTED BY THE CHEROKEE METRO DISTRICT'S INSPECTOR.
- ALL BENDS SHALL BE FIELD STAKED PRIOR TO CONSTRUCTION AND THE STATIONING ON THE FIELD STAKES SHALL MATCH THE STATIONING ON THE PLANS.
- FIELD MODIFICATIONS TO A FIRE SERVICE LINE OR FIRE HYDRANT DESIGN OR LOCATION MAY NEED TO BE APPROVED BY THE DESIGN ENGINEER, FIRE DEPARTMENT AND CHEROKEE METRO DISTRICT, AS REQUIRED BY THE INSPECTOR.
- REUSE OR SALVAGE OF ANY MATERIAL IS LEFT TO THE DISCRETION OF THE CHEROKEE METRO DISTRICT'S INSPECTOR.
- ALL TRENCH BACKFILL AND COMPACTION SHALL BE IN ACCORDANCE WITH SECTION 206 OF THE CITY OF COLORADO SPRINGS STANDARD SPECIFICATIONS MANUAL.
- ALL WATER SERVICE LINES SHOULD ENTER THE BUILDING WITHIN 3 FEET OF AN EXTERIOR WALL. EXPOSED WATER PLUMBING SHALL BE MINIMIZED INSIDE THE BUILDING PRIOR TO THE WATER METER AND/OR APPROVED BACKFLOW PREVENTION ASSEMBLY OR METHOD.



BUILDING FIRE DATA

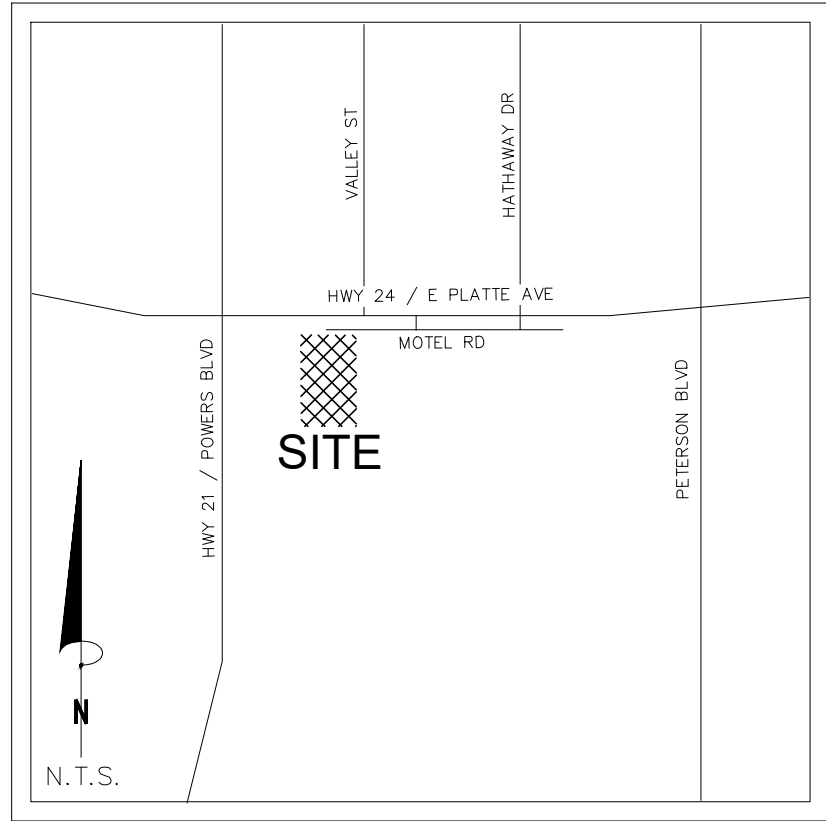
	MINI STORAGE
CONSTRUCTION TYPE	II-A
GROSS SQUARE FOOTAGE	9,000
REQUIRED FIRE FLOW	1,500
REQUIRED # OF HYDRANTS	1
AVG SPACING BETWEEN HYDRANT	500 FT
MAX HOSE DISTANCE	250 FT
FIRE FLOW PROVIDED	UNK
FIRE FLOW DURATION	2 HRS
AREA SEPARATION WALL	NO
MAX STATIC PRESSURE	UNK

FIRE FLOW

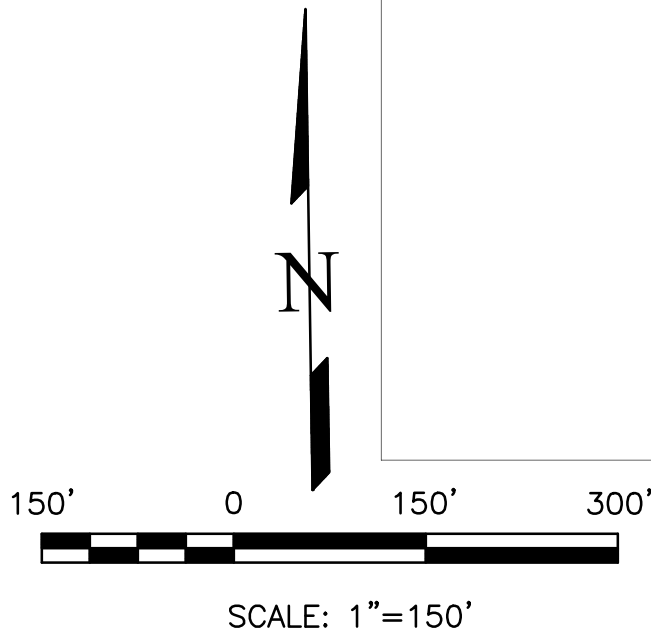
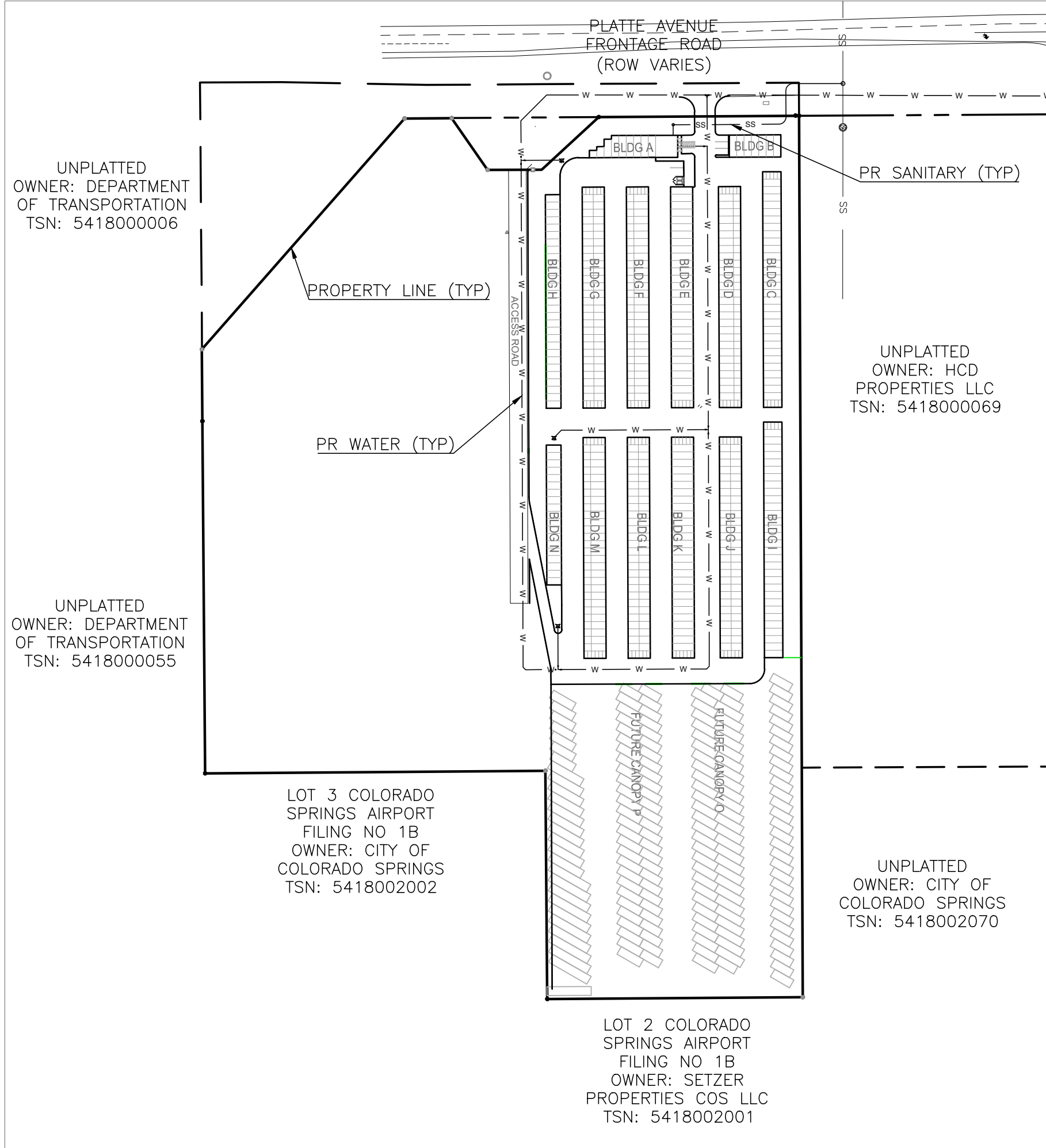
THE THEORETICAL AVAILABLE FIRE FLOW AT EACH FIRE HYDRANT NODE WITH A 20 PSI RESIDUAL IS ESTIMATED AS FOLLOWS (ACTUAL FIRE FLOW MAY VARY DUE TO VARIOUS PARAMETERS). FLOW ESTIMATES ARE BASED ON A FLOW TEST OF THE EXISTING HYDRANT BY THE CHEROKEE METRO DISTRICT, FLOW AT PRESSURE CALCULATIONS, AND THE ELEVATION CHANGE BETWEEN THE TEST AND PROPOSED HYDRANTS.

NODE	FIRE FLOW (GPM)
A	UNK
B	UNK
C	UNK

AVAILABLE WATER FLOW/PRESSURE NOTE: TERRA NOVA ENGINEERING REQUESTED EXISTING WATER MAIN FLOW TEST DATA FROM CHEROKEE METRO DISTRICT THREE TIMES OVER EIGHT MONTHS AND HAS NEVER BEEN PROVIDED WITH THE DATA. DUE TO THIS THE FIRE FLOW DATA IS NOT KNOWN.



VICINITY MAP
N.T.S.



SHEET INDEX

COVER SHEET	1
SANITARY PLAN & PROFILE	2
WATER PLAN	3
WATER MAIN PLAN & PROFILE	4
WATER MAIN PLAN & PROFILE	5
WATER MAIN PLAN & PROFILE	6
WATER MAIN PLAN & PROFILE	7

SITE ADDRESS

6001 E PLATTE AVE, COLORADO SPRINGS

TAX ID

5418000075

LEGAL DESCRIPTION

TRACT IN NW4 OF SEC 18-14-65 AS FOLS, BEG AT A PT ON S R/W LN OF US HWY 24 940 FT E OF W LN OF SD SEC, TH E ON SD LN 310 FT, ANG R 90< S 25 FT, ANG L 90< E 155.2 FT M/L, S 931.8 FT, W PARA WITH S LN OF N2 426.1 FT M/L TO A PT, TH ANG R 89<59' N 958.2 FT TO POB, W 349.88 FT OF NE4NW4 OF SEC 18 EX HWY BY BK 6509-223 & REC #201040780

BENCHMARKS

CDOT RIGHT OF WAY MONUMENT #3014 - ELEV=6232.52 (NAVD-1988)
[NORTHEAST OF SITE ENTRANCE]

CONTACT INFORMATION:

OWNER:	DONALD HUMPHREY 5780 SAYRES ROAD COLORADO SPRINGS, CO 80927 (719) 492-8649
CIVIL ENGINEER:	TERRA NOVA ENGINEERING, INC. 721 S. 23RD STREET COLORADO SPRINGS, COLORADO 80904 DANE FRANK, P.E., (719) 635-6422
EL PASO COUNTY	PLANNING AND COMMUNITY DEVELOPMENT 2880 INTERNATIONAL CIRCLE COLORADO SPRINGS, COLORADO 80910 (719) 520-6300
CIMARRON HILLS FIRE DEPT	HEADQUARTERS 1835 TUSKEGEE PL COLORADO SPRINGS, COLORADO 80915 (719) 591-0960
CHEROKEE METRO DISTRICT	6250 PALMER PARK BOULEVARD COLORADO SPRINGS, COLORADO 80915 (719) 597-5080

APPROVALS

PREPARED UNDER MY DIRECT SUPERVISION OF TERRA NOVA ENGINEERING, INC.

Dane Frank

DANE FRANK, COLORADO P.E. #50207

DATE



OWNER/DEVELOPER PLAN APPROVAL

THE UNDERSIGNED OWNER/DEVELOPER AGREES THAT THEY SHALL, AT THEIR EXPENSE, BE SOLELY RESPONSIBLE FOR 1) THE INSTALLATION OF THE PROPOSED UTILITY INFRASTRUCTURE IN ACCORDANCE WITH THESE PLANS, AND 2) ALL DAMAGES AND DEFECTS ARISING FROM, OR RELATED TO, THE INSTALLATION, MAINTENANCE OR OPERATION OF THE PUBLIC UTILITY INFRASTRUCTURE FROM THE DATE OF PRELIMINARY ACCEPTANCE FOR A PERIOD OF TWO YEARS, OR UNTIL FINAL ACCEPTANCE, WHICHEVER IS LATER.

THE UNDERSIGNED UNDERSTANDS THAT ALL PRIVATE UTILITY INFRASTRUCTURE, AS INDICATED ON THESE PLANS, SHALL REMAIN THE PROPERTY OF THE OWNER AND SHALL BE MAINTAINED BY THE OWNER, AS REQUIRED BY "COLORADO SPRINGS UTILITIES' LINE EXTENSION AND SERVICE STANDARDS".

☒ PUBLIC FACILITIES PROPOSED

☒ PRIVATE FACILITIES PROPOSED

SIGNED:

[Signature]

OWNER/DEVELOPER

[Signature]
OWNER/DEVELOPER (PRINT NAME)

DATE: 2/6/25

DBA:

Colorado Commercial Construction Inc.

ADDRESS:

12325 Oracle Blvd., Ste 120

Colorado Springs, CO 80921

EMAIL ADDRESS:

jbeegs@cccommercial.net

PHONE:

719-264-6955

CHEROKEE METROPOLITAN DISTRICT

UTILITY SERVICE PLAN APPROVAL

THE CHEROKEE METROPOLITAN DISTRICT RECOGNIZES THE DESIGN PROFESSIONAL OF RECORD AS THE LICENSED ENGINEER HAVING RESPONSIBILITY FOR THE SUBMITTED DESIGN AND THE DISTRICT HAS LIMITED ITS SCOPE OF REVIEW ACCORDINGLY. AS SUCH, THE APPROVAL GRANTED HEREIN IS FOR THE CONSTRUCTION OF THE FACILITIES AS REPRESENTED ON THESE DOCUMENTS. APPROVAL EXPIRES ONE (1) YEAR FROM THE DATE BELOW AND RESUBMITTAL OF THESE PLANS FOR REVIEW AND APPROVAL IS REQUIRED IF CONSTRUCTION DOES NOT BEGIN DURING THIS PERIOD.

APPROVED BY: _____ DATE: _____

CHEROKEE METROPOLITAN DISTRICT

WATER PLAN APPROVAL

THE CHEROKEE METROPOLITAN DISTRICT RECOGNIZES THE DESIGN PROFESSIONAL OF RECORD AS THE LICENSED ENGINEER HAVING RESPONSIBILITY FOR THE SUBMITTED DESIGN AND THE DISTRICT HAS LIMITED ITS SCOPE OF REVIEW ACCORDINGLY. AS SUCH, THE APPROVAL GRANTED HEREIN IS FOR THE CONSTRUCTION OF THE FACILITIES AS REPRESENTED ON THESE DOCUMENTS. APPROVAL EXPIRES ONE (1) YEAR FROM THE DATE BELOW AND RESUBMITTAL OF THESE PLANS FOR REVIEW AND APPROVAL IS REQUIRED IF CONSTRUCTION DOES NOT BEGIN DURING THIS PERIOD.

APPROVED BY: _____ DATE: _____

ACCORDING TO THE MODELED CALCULATIONS REVIEWED BY THE GOVERNING WATER DISTRICT AND/OR COLORADO REGISTERED CIVIL ENGINEER/DESIGNER: THE THEORETICAL AVAILABLE FIRE FLOW AT NODE A IS UNKNOWN: GALLONS PER MINUTE UNDER MAXIMUM DAILY DEMAND CONDITIONS AT 20 PSI RESIDUAL. THE ACTUAL FIRE FLOW MAY VARY DUE TO VARIOUS PARAMETERS.

UPON DETAILED REVIEW OF THE AVAILABLE WATER SUPPLY, FIRE HYDRANT LOCATIONS AND HOSE LAY DISTANCES, THESE PLANS ARE HEREBY CONSIDERED APPROVED.

CIMARRON HILLS FIRE DEPARTMENT

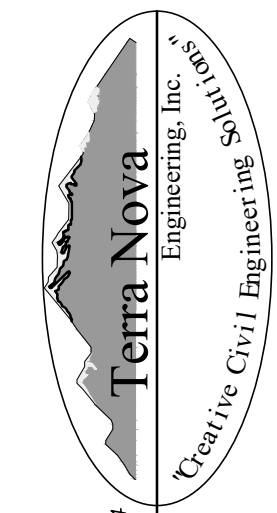
FIRE DEPARTMENT SIGNATURE: _____

DATE: _____

REVISIONS
NO. DESCRIPTION DATE

UNTIL SUCH TIME AS THESE DRAWINGS ARE APPROVED BY THE REVIEWING AGENCIES, TERRA NOVA ENGINEERING, INC. APPROVES THEIR USE ONLY FOR THE PROJECT DESIGNATED BY WRITTEN AUTHORIZATION.

PREPARED FOR:
RMG-ROCKY MOUNTAIN GROUP
ATTN:
5085 LIST DR, #200
COLORADO SPRINGS, CO 80919
719.548.0600



721 S. 23RD STREET
COLORADO SPRINGS, CO 80904
OFFICE: 719-635-6422
FAX: 719-635-6426
www.tnecinc.com

PLATTE SELF STORAGE

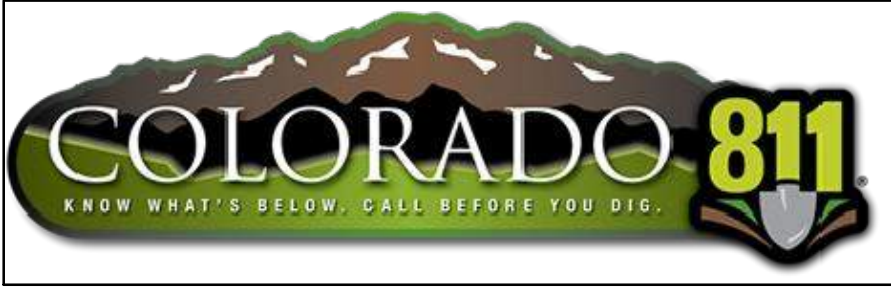
WATER & UTILITY SERVICE PLAN

COVER SHEET

DESIGNED BY	JF
DRAWN BY	JF
CHECKED BY	LD
H-SCALE	AS SHOWN
V-SCALE	N/A
JOB NO.	2419.00
DATE ISSUED	01/14/25
SHEET NO.	1 OF 7

PPR2418

N:\Jobs\2419.00\Drawings\241900 UTIL.dwg, 2/7/2025 2:26:39 PM



PLATTE SELF STORAGE

WATER & UTILITY SERVICE PLAN

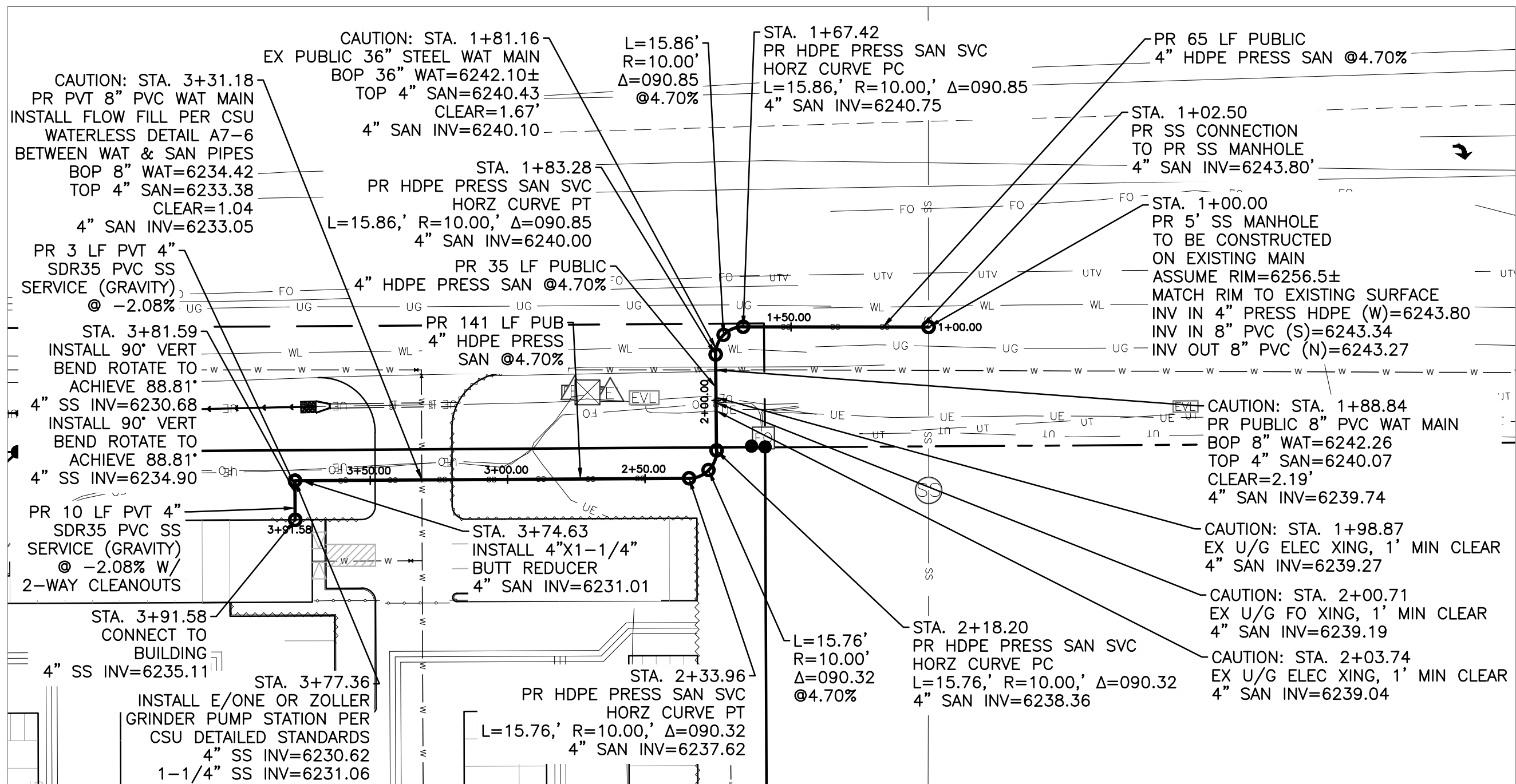
SANITARY PLAN & PROFILE

JANUARY 2025

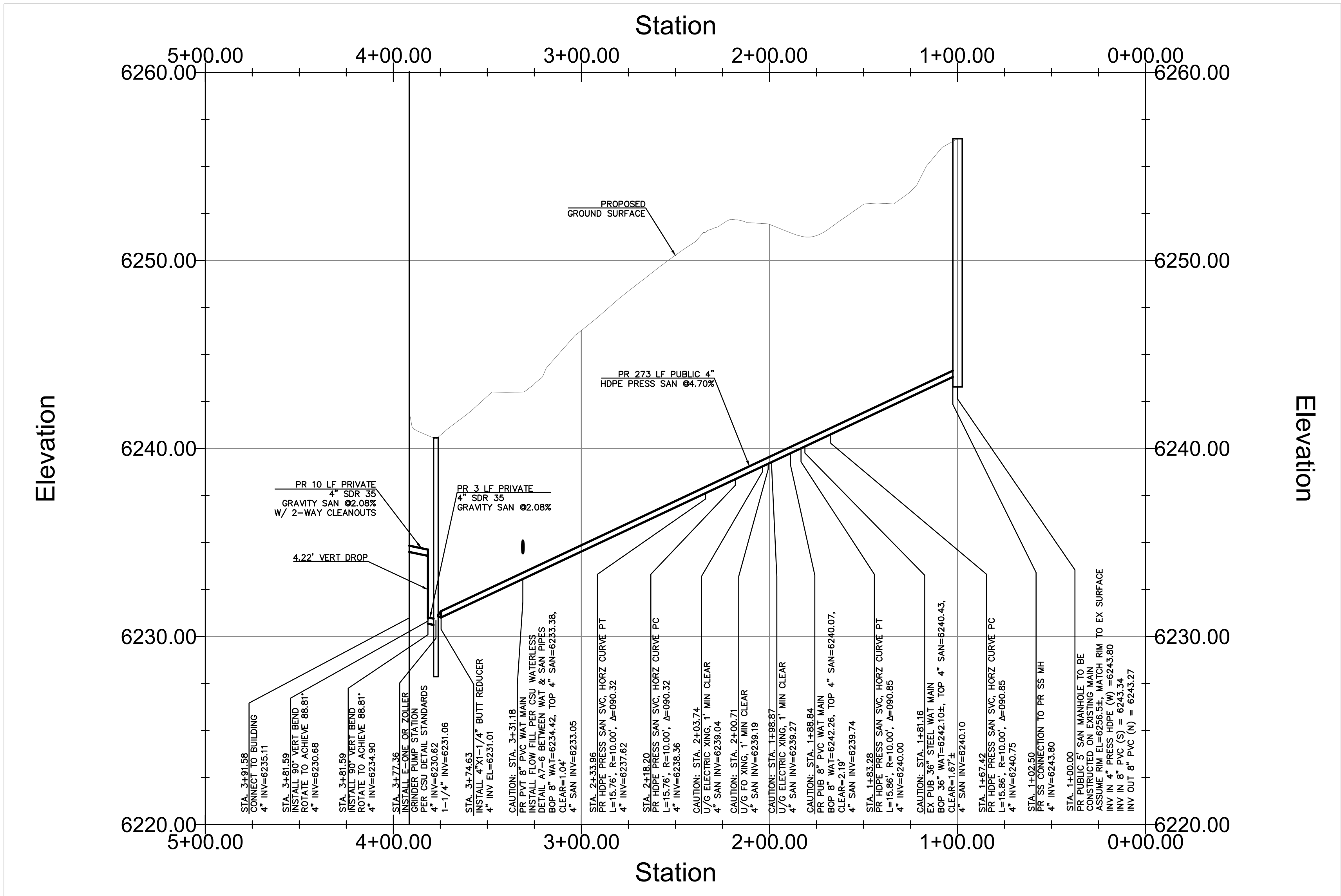
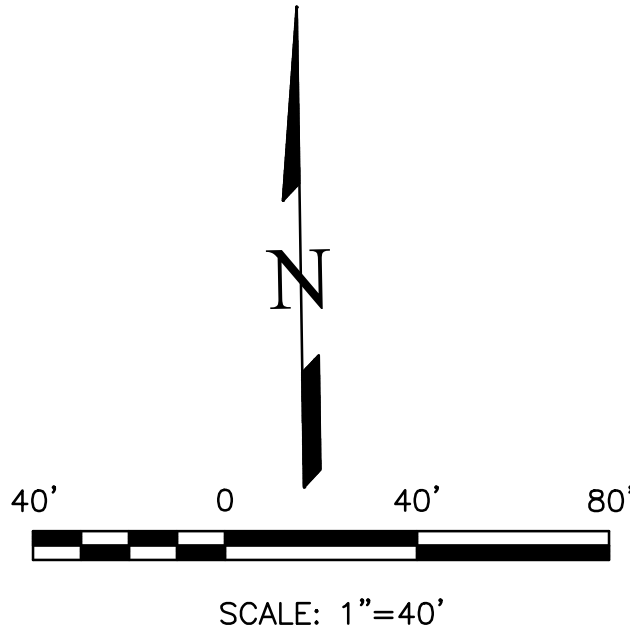
NOTES:

—ALL EXISTING UNDERGROUND AND ABOVE GROUND UTILITY LOCATIONS, INVERTS AND SIZES ARE APPROXIMATE ONLY AND MUST BE FIELD VERIFIED PRIOR TO CONSTRUCTION. TIE IN POINTS SHALL BE POTHOLED AND LOCATIONS, INVERTS AND SIZES SHALL BE FIELD VERIFIED BY THE CONTRACTOR PRIOR TO CONSTRUCTION.

—ALL PROPOSED MANHOLES TO BE CHEROKEE STANDARD OF MINIMUM 5' INTERNAL DIAMETER.



PR SANITARY - PLAN VIEW
SCALE 1" = 40'



PR SANITARY - PROFILE VIEW
HORZ SCALE 1" = 40'
VERT SCALE 1" = 4'

LEGEND

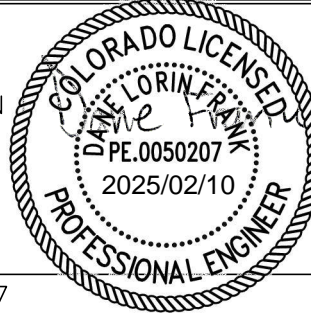
PROPOSED	PR
EXISTING	EX
WATER LINE	— W — W —
SEWER LINE	— SS — SS —
STORM LINE	— ST — ST —
UNDERGROUND ELECTRIC LINE	— UE — UE —
CHAIN LINK FENCE	— □ — □ —
FIRE HYDRANT	— (F) — (F) —
GAS LINE	— UG — UG —
FIBER OPTIC LINE	— FO — FO —

APPROVALS

PREPARED UNDER MY DIRECT SUPERVISION OF TERRA NOVA ENGINEERING, INC.

Dane Frank

DANE FRANK, COLORADO P.E. #50207

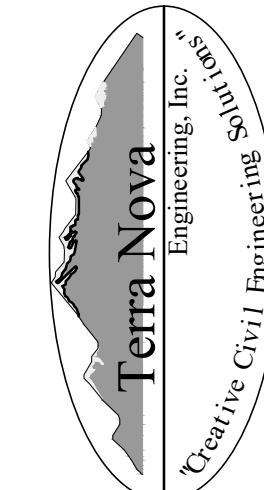


DATE

PLATTE SELF STORAGE

WATER & UTILITY SERVICE PLAN
SANITARY PLAN & PROFILE

DESIGNED BY JF	
DRAWN BY JF	
CHECKED BY LD	
H-SCALE AS SHOWN	
V-SCALE N/A	
JOB NO. 2419.00	
DATE ISSUED 01/14/25	
SHEET NO. 2 OF 7	

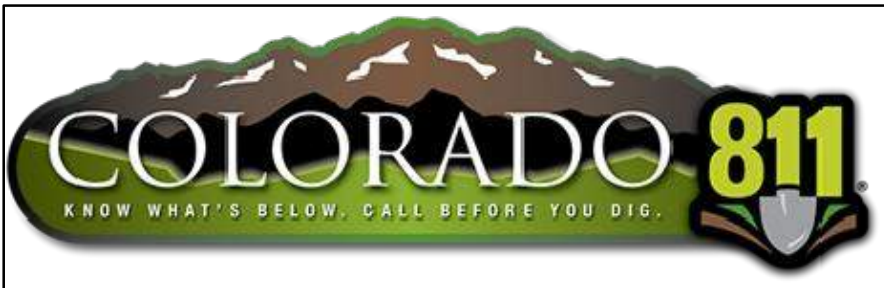


721 S. 23RD STREET
COLORADO SPRINGS, CO 80904
OFFICE: 719-635-6422
FAX: 719-635-6426
www.tnengine.com

PREPARED FOR:
RMG-ROCKY MOUNTAIN GROUP
ATTN:
5085 LIST DR, #200
COLORADO SPRINGS, CO 80919
719.548.0600

UNTIL SUCH TIME AS THESE
DRAWINGS ARE APPROVED
BY THE ENGINEER OF
TERRA NOVA ENGINEERING,
INC. APPROVES THEIR USE
ONLY FOR THE PROJECT
SPECIFICALLY IDENTIFIED BY
WRITTEN AUTHORIZATION.

REVISIONS	NO.	DESCRIPTION	DATE

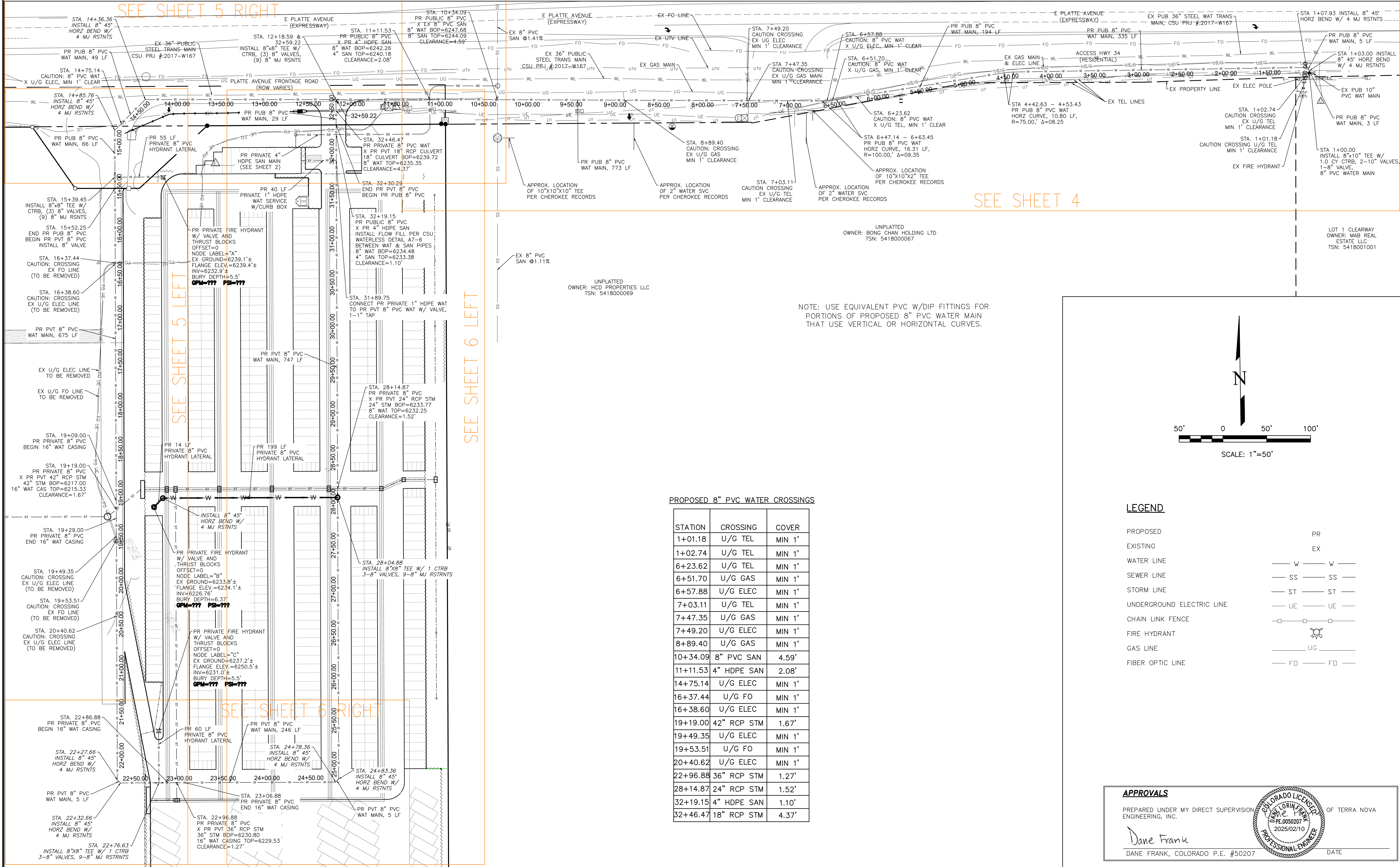


PLATTE SELF STORAGE

WATER & UTILITY SERVICE PLAN

WATER PLAN OVERVIEW

JANUARY 2025



PROPOSED 8" PVC WATER CROSSINGS

STATION	CROSSING	COVER
1+01.18	U/G TEL	MIN 1'
1+02.74	U/G TEL	MIN 1'
6+23.62	U/G TEL	MIN 1'
6+51.70	U/G GAS	MIN 1'
6+57.88	U/G ELEC	MIN 1'
7+03.11	U/G TEL	MIN 1'
7+47.35	U/G GAS	MIN 1'
7+49.20	U/G ELEC	MIN 1'
8+89.40	U/G GAS	MIN 1'
10+34.09	8" PVC SAN	4.59'
11+11.53	4" HDPE SAN	2.08'
14+75.14	U/G ELEC	MIN 1'
16+37.44	U/G FO	MIN 1'
16+38.60	U/G ELEC	MIN 1'
19+19.00	42" RCP STM	1.67'
19+49.35	U/G ELEC	MIN 1'
19+53.51	U/G FO	MIN 1'
20+40.62	U/G ELEC	MIN 1'
22+96.88	36" RCP STM	1.27'
28+14.87	24" RCP STM	1.52'
32+19.15	4" HDPE SAN	1.10'
32+46.47	18" RCP STM	4.37'

LEGEND

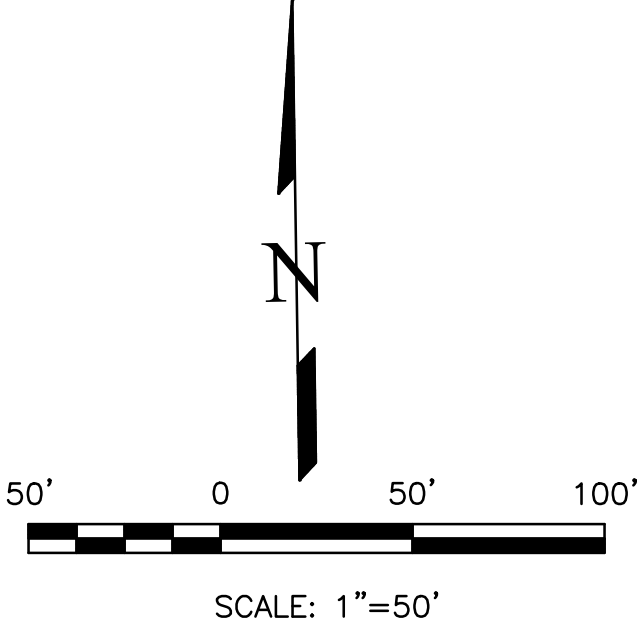
PROPOSED	PR
EXISTING	EX
WATER LINE	— W — W —
SEWER LINE	— SS — SS —
STORM LINE	— ST — ST —
UNDERGROUND ELECTRIC LINE	— UE — UE —
CHAIN LINK FENCE	— □ — □ —
FIRE HYDRANT	— (Symbol) —
GAS LINE	— UG —
FIBER OPTIC LINE	— FO — FO —

APPROVALS

PREPARED UNDER MY DIRECT SUPERVISION OF TERRA NOVA ENGINEERING, INC.

Dane Frank
DANE FRANK, COLORADO P.E. #50207

DATE



DATE

DESCRIPTION

REVISIONS

NO.

UNTIL SUCH TIME AS THESE DRAWINGS ARE APPROVED BY THE REVIEWING AGENCIES, TERRA NOVA ENGINEERING, INC. APPROVES THEIR USE ONLY FOR THE PROJECT AND FOR THE PURPOSES SPECIFIED BY WRITTEN AUTHORIZATION.

PREPARED FOR:

RMG-ROCKY MOUNTAIN GROUP

ATTN:

5085 LIST DR, #200

COLORADO SPRINGS, CO 80919

719.548.0600

721 S. 23RD STREET
COLORADO SPRINGS, CO 80904
OFFICE: 719-635-6422
FAX: 719-635-6426
www.tnecinc.com

PLATTE SELF STORAGE

WATER & UTILITY SERVICE PLAN

DESIGNED BY JF

DRAWN BY JF

CHECKED BY LD.

H-SCALE AS SHOWN

V-SCALE N/A

JOB NO. 2419.00

DATE ISSUED 01/14/25

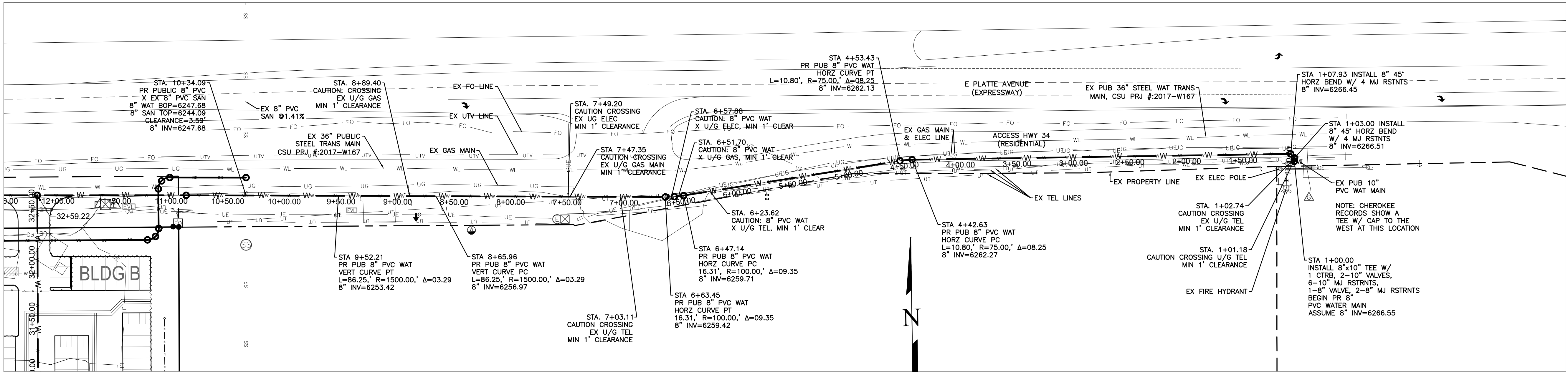
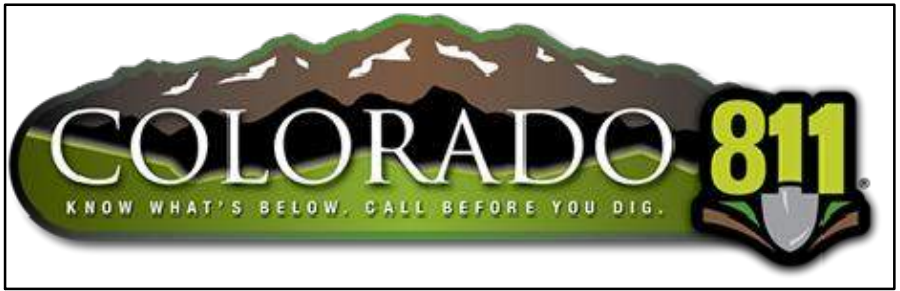
SHEET NO. 3 OF 7

N:\Jobs\2419.00\Drawings\241900 UTIL.dwg, 2/7/2025 2:26:42 PM

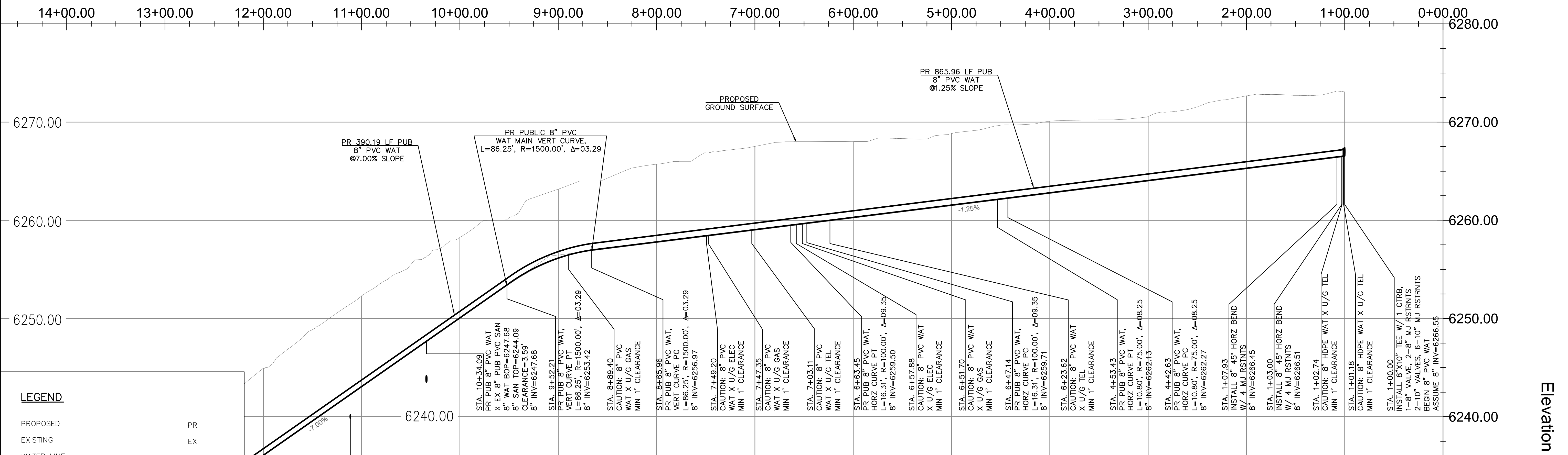
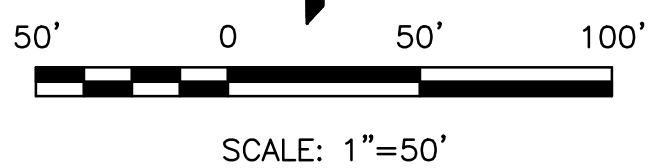
PLATTE SELF STORAGE
WATER & UTILITY SERVICE PLAN
WATER MAIN PLAN & PROFILE
JANUARY 2025

NOTE: ALL EXISTING UNDERGROUND AND ABOVE GROUND UTILITY LOCATIONS, INVERTS AND SIZES ARE APPROXIMATE ONLY AND MUST BE FIELD VERIFIED PRIOR TO CONSTRUCTION. TIE IN POINTS SHALL BE POTHOLED AND LOCATIONS, INVERTS AND SIZES SHALL BE FIELD VERIFIED BY THE CONTRACTOR PRIOR TO CONSTRUCTION.

NOTE: USE EQUIVALENT PVC W/DIP FITTINGS FOR PORTIONS OF PROPOSED 8" PVC WATER MAIN THAT USE VERTICAL OR HORIZONTAL CURVES.



PR WATER MAIN - PLAN VIEW



PR WATER MAIN - PROFILE VIEW
HORZ SCALE 1" = 50'
VERT SCALE 1" = 5'

LEGEND

PROPOSED	PR
EXISTING	EX
WATER LINE	— W — W —
SEWER LINE	— SS — SS —
STORM LINE	— ST — ST —
UNDERGROUND ELECTRIC LINE	— UE — UE —
CHAIN LINK FENCE	— [] — [] —
FIRE HYDRANT	— [] — [] —
GAS LINE	— UG — UG —
FIBER OPTIC LINE	— FO — FO —

APPROVALS

PREPARED UNDER MY DIRECT SUPERVISION
ENGINEERING, INC.
Dane Frank
DANE FRANK, COLORADO P.E. #50207
DATE



REVISIONS

NO.	DESCRIPTION	DATE

UNTIL SUCH TIME AS THESE DRAWINGS ARE APPROVED BY THE REVIEWING ENGINEER, TERRA NOVA ENGINEERING, INC. APPROVES THEIR USE ONLY FOR THE PROJECT DESIGNATED BY WRITTEN AUTHORIZATION.

PREPARED FOR:
RMG-ROCKY MOUNTAIN GROUP
ATTN:
5085 LIST DR, #200
COLORADO SPRINGS, CO 80919
719.548.0600

Terra Nova
Engineering, Inc.
Creative Civil Engineering

721 S. 23RD STREET
COLORADO SPRINGS, CO 80904
OFFICE: 719-635-6422
FAX: 719-635-6426
www.tnecinc.com

PLATTE SELF STORAGE

WATER & UTILITY SERVICE PLAN
WATER MAIN PLAN & PROFILE

DESIGNED BY DLF

DRAWN BY DLF

CHECKED BY LD

H-SCALE AS SHOWN

V-SCALE AS SHOWN

JOB NO. 2419.00

DATE ISSUED 01/14/25

SHEET NO. 4 OF 7

N:\Jobs\2419.00\Drawings\241900 UTIL.dwg, 2/7/2025 2:26:45 PM

PLATTE SELF STORAGE

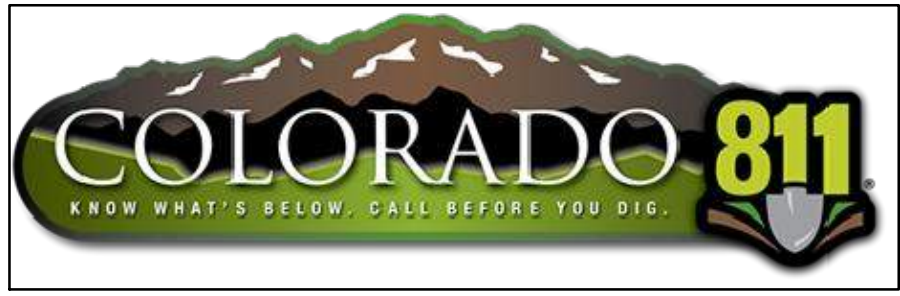
WATER & UTILITY SERVICE PLAN

WATER MAIN PLAN & PROFILE

JANUARY 2025

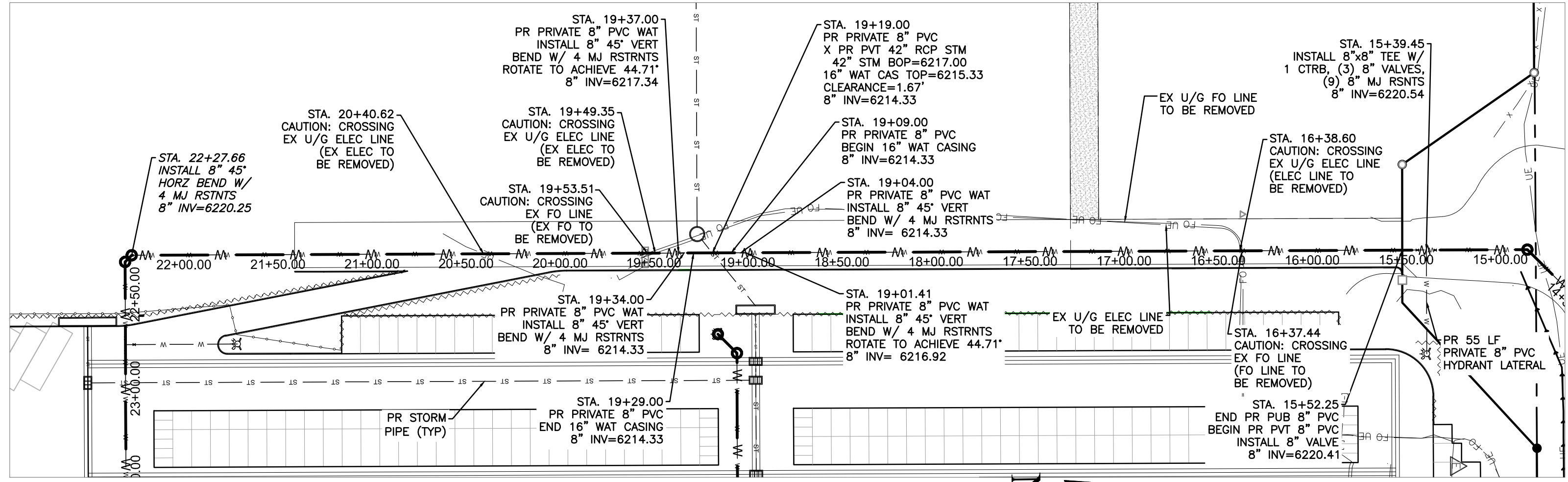
NOTE: ALL EXISTING UNDERGROUND AND ABOVE GROUND UTILITY LOCATIONS, INVERTS AND SIZES ARE APPROXIMATE ONLY AND MUST BE FIELD VERIFIED PRIOR TO CONSTRUCTION. THE IN POINTS SHALL BE POTHOLED AND LOCATIONS, INVERTS AND SIZES SHALL BE FIELD VERIFIED BY THE CONTRACTOR PRIOR TO CONSTRUCTION.

NOTE: USE EQUIVALENT PVC W/DIP FITTINGS FOR PORTIONS OF PROPOSED 8" PVC WATER MAIN THAT USE VERTICAL OR HORIZONTAL CURVES.

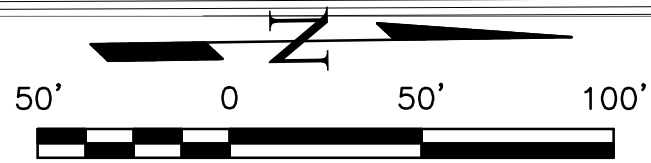


LEGEND

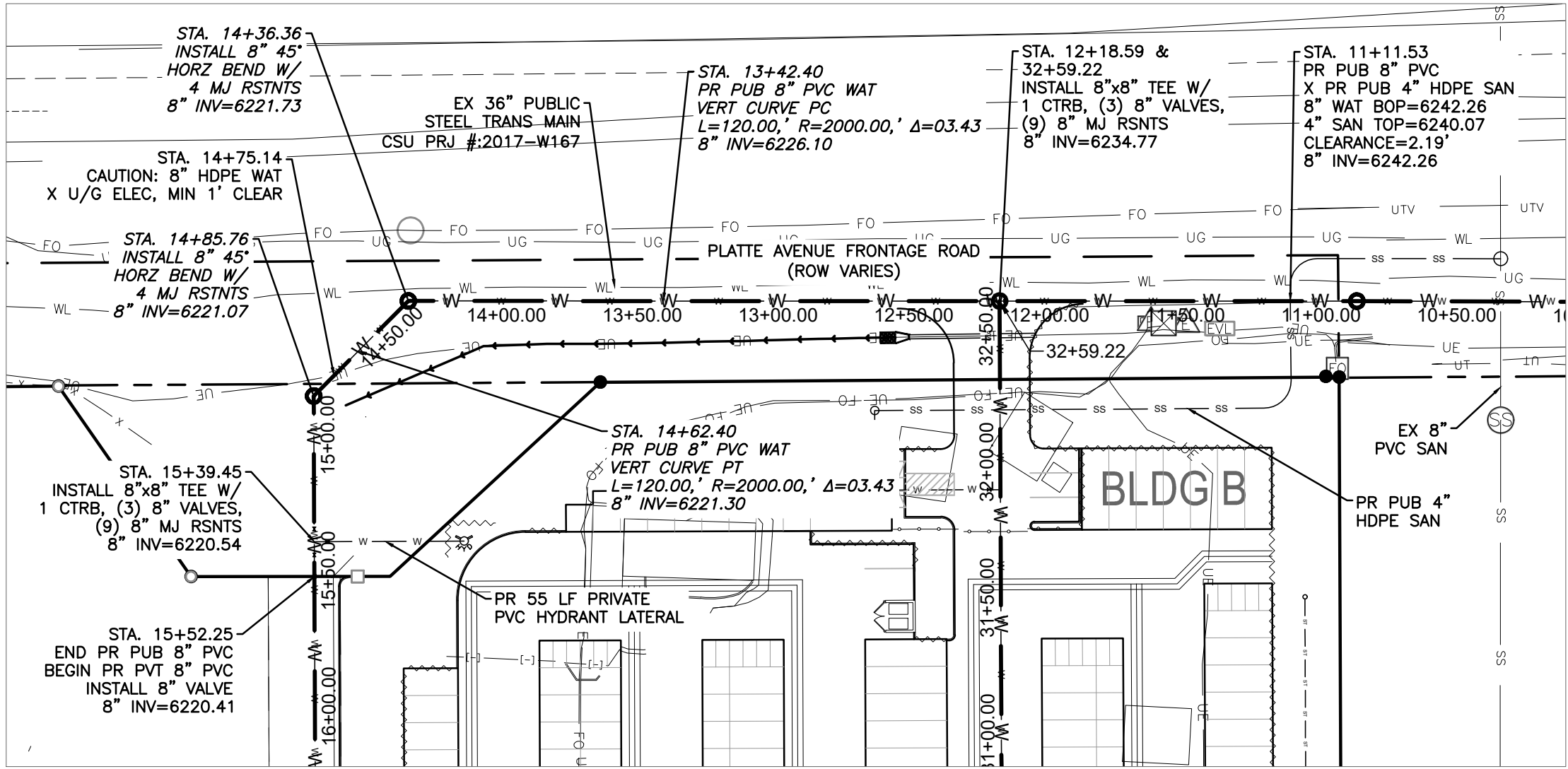
PROPOSED	PR
EXISTING	EX
WATER LINE	— W — W —
SEWER LINE	— SS — SS —
STORM LINE	— ST — ST —
UNDERGROUND ELECTRIC LINE	— UE — UE —
CHAIN LINK FENCE	— □ — □ —
FIRE HYDRANT	⊗
GAS LINE	— UG —
FIBER OPTIC LINE	— FO — FO —



PR WATER MAIN - PLAN VIEW



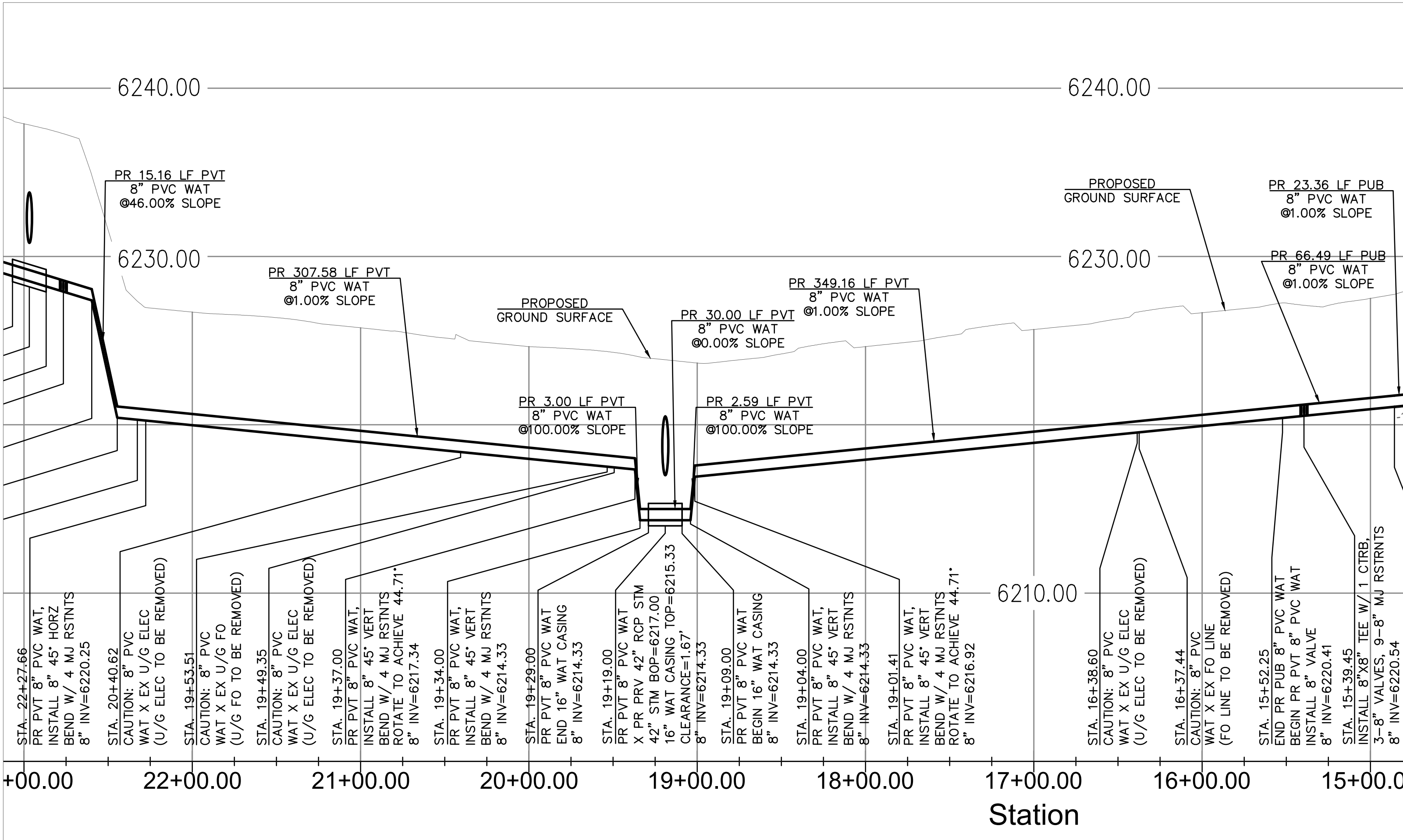
SCALE: 1"=50'



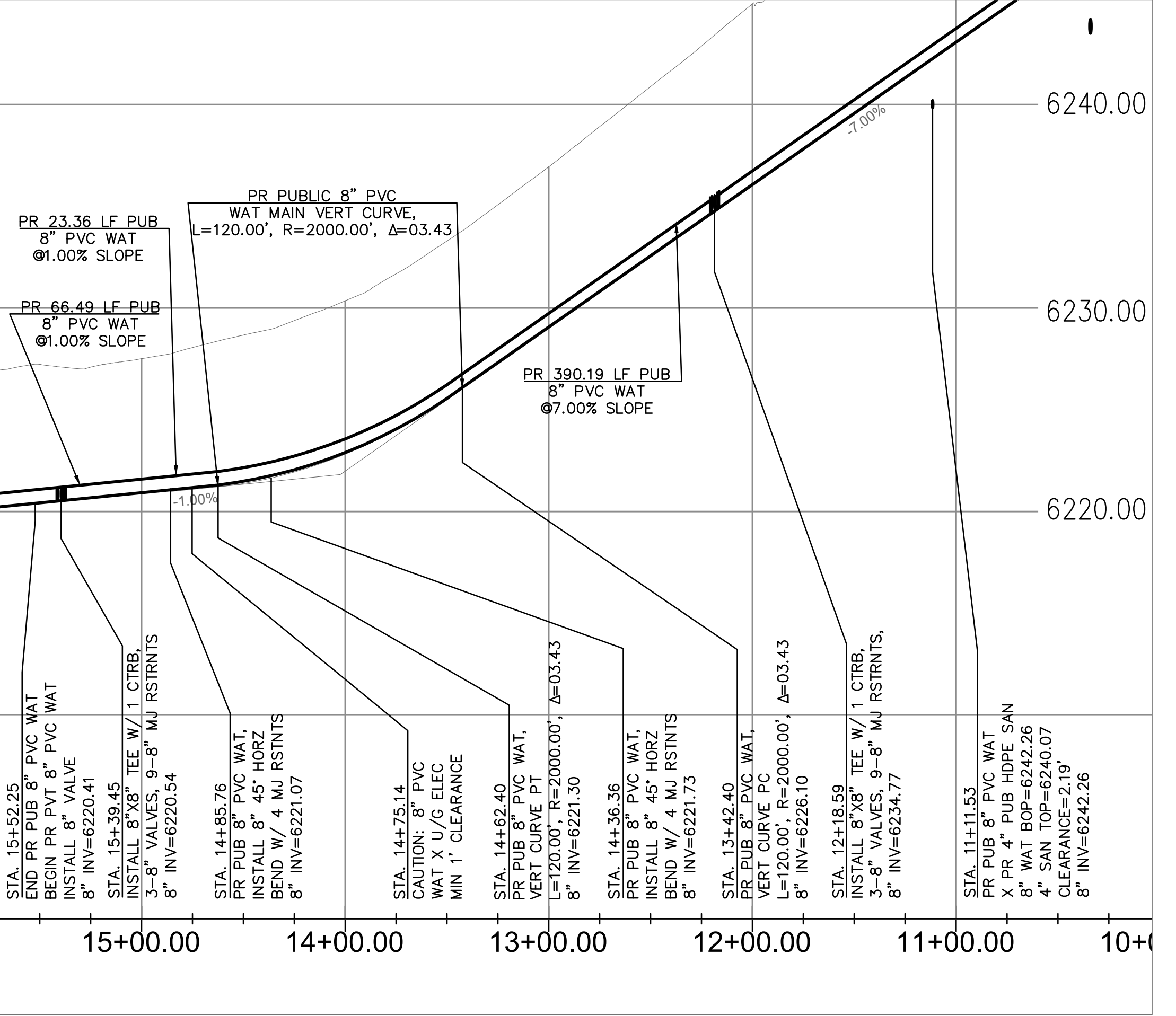
PR WATER MAIN - PLAN VIEW



SCALE: 1"=50'



PR WATER MAIN - PROFILE VIEW
HORZ SCALE 1" = 50'
VERT SCALE 1" = 5'



PR WATER MAIN - PROFILE VIEW
HORZ SCALE 1" = 50'
VERT SCALE 1" = 5'

APPROVALS

PREPARED UNDER MY DIRECT SUPERVISION OF TERRA NOVA ENGINEERING, INC.

Dane Frank

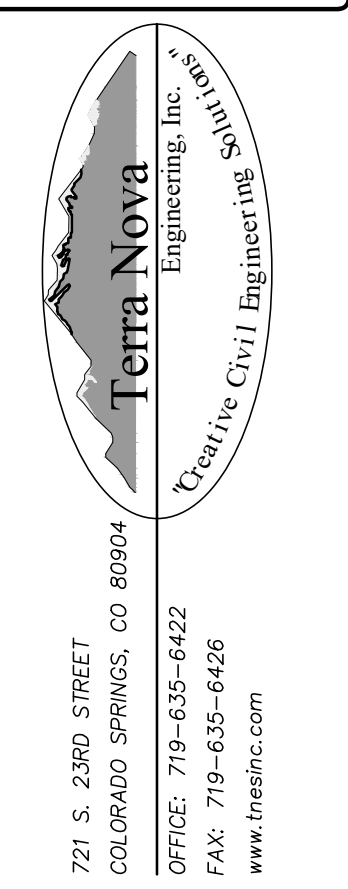
DANE FRANK, COLORADO P.E. #50207

DATE



REVISIONS	NO.	DESCRIPTION	DATE
UNTIL SUCH TIME AS THESE DRAWINGS ARE APPROVED BY THE REVIEWING AGENCIES, TERRA NOVA ENGINEERING, INC. APPROVES THEIR USE ONLY FOR THE PROJECT AND FOR THE PURPOSES SPECIFIED BY WRITTEN AUTHORIZATION.			

PREPARED FOR:
RMG-ROCKY MOUNTAIN GROUP
ATTN:
5085 LIST DR, #200
COLORADO SPRINGS, CO 80919
719.548.0600



PLATTE SELF STORAGE
WATER & UTILITY SERVICE PLAN
WATER MAIN PLAN & PROFILE

DESIGNED BY DLF	
DRAWN BY DLF	
CHECKED BY LD	
H-SCALE AS SHOWN	
V-SCALE AS SHOWN	
JOB NO. 2419.00	
DATE ISSUED 01/14/25	
SHEET NO. 5 OF 7	

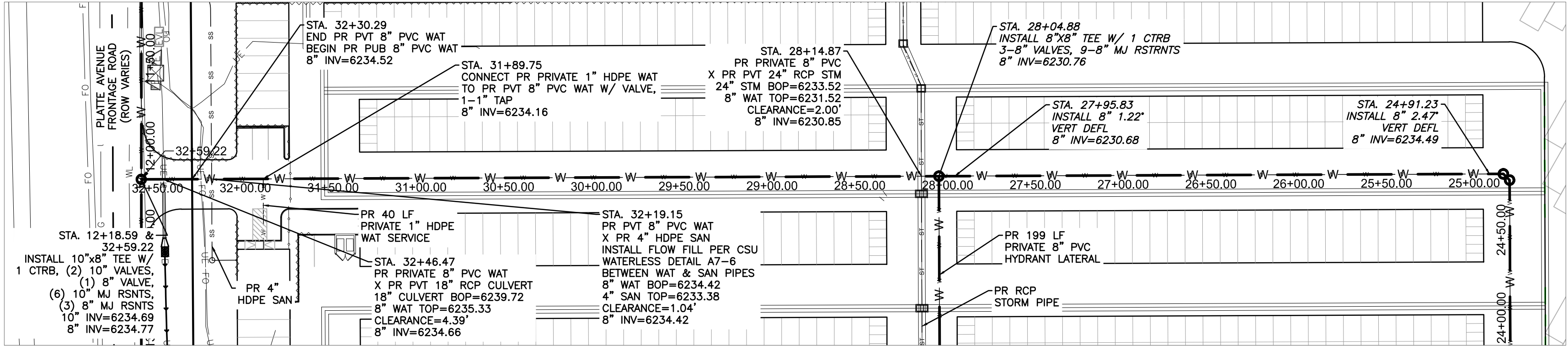
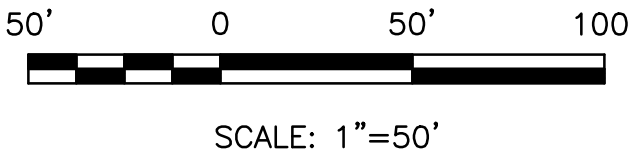
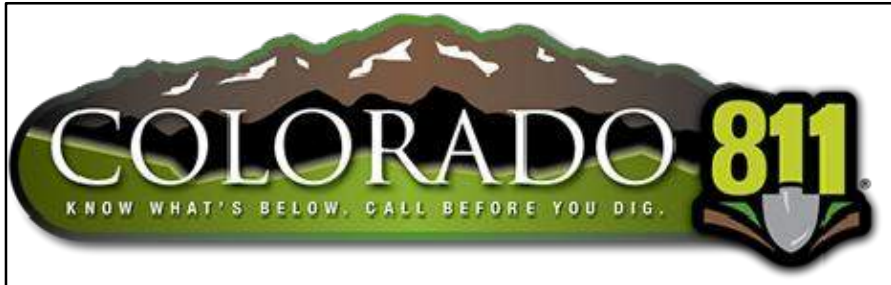
N:\Jobs\2419.00\Drawings\241900 UTIL.dwg, 2/7/2025 2:26:49 PM

LEGEND

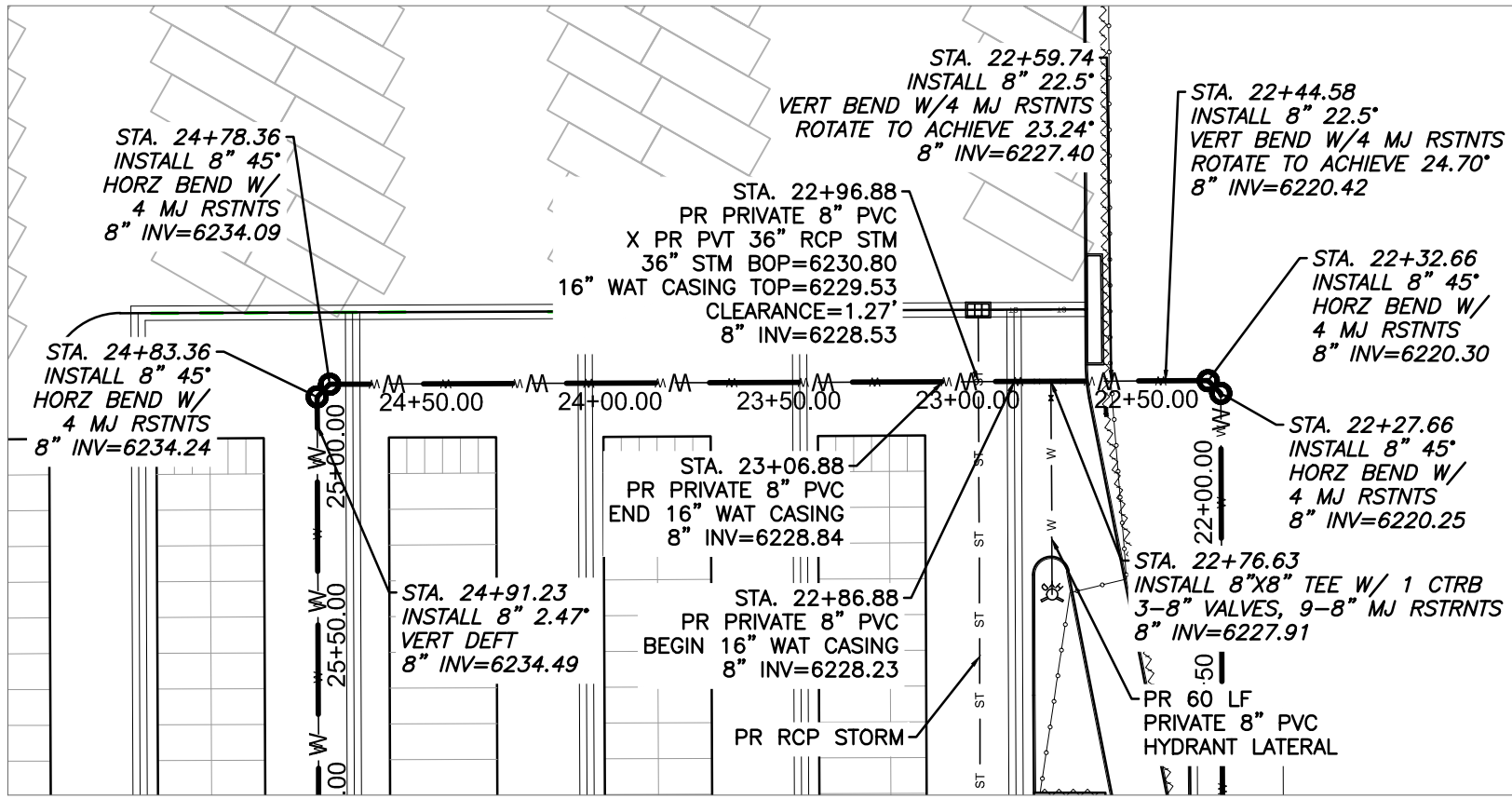
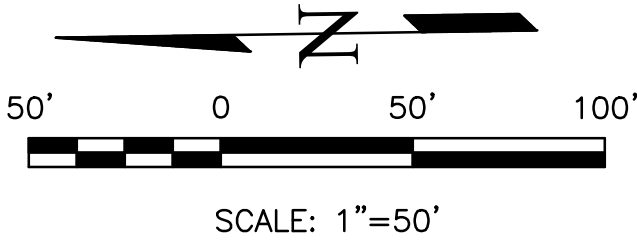
PROPOSED	PR
EXISTING	EX
WATER LINE	— W — W —
SEWER LINE	— SS — SS —
STORM LINE	— ST — ST —
UNDERGROUND ELECTRIC LINE	— UE — UE —
CHAIN LINK FENCE	— □ — □ — □ —
FIRE HYDRANT	— ⋈ —
GAS LINE	— UG — UG —
FIBER OPTIC LINE	— FO — FO —

PLATTE SELF STORAGE
WATER & UTILITY SERVICE PLAN
WATER MAIN PLAN & PROFILE
JANUARY 2025

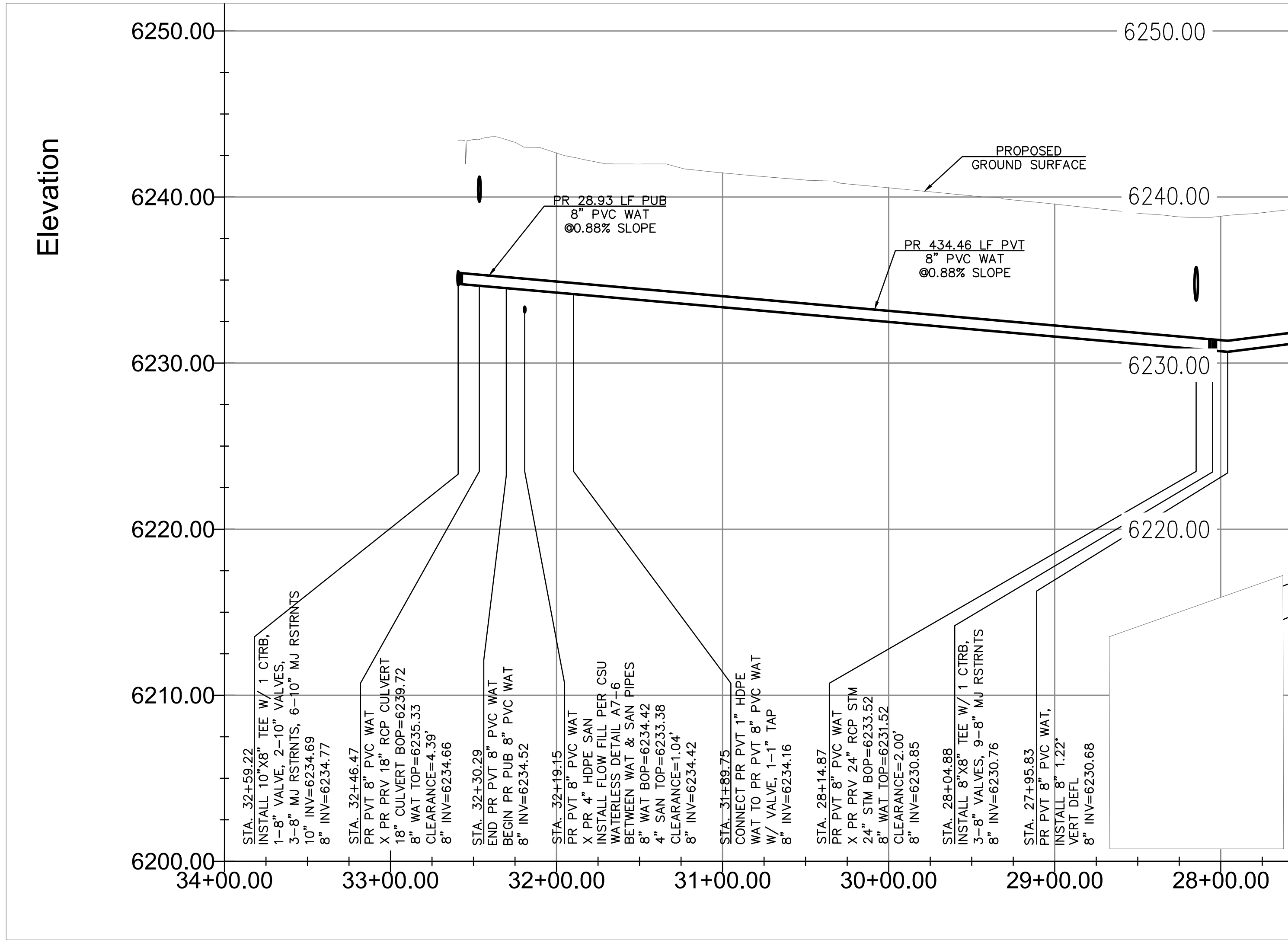
NOTE: ALL EXISTING UNDERGROUND AND ABOVE GROUND UTILITY LOCATIONS, INVERTS AND SIZES ARE APPROXIMATE ONLY AND MUST BE FIELD VERIFIED PRIOR TO CONSTRUCTION. TIE IN POINTS SHALL BE POTHOLED AND LOCATIONS, INVERTS AND SIZES SHALL BE FIELD VERIFIED BY THE CONTRACTOR PRIOR TO CONSTRUCTION.



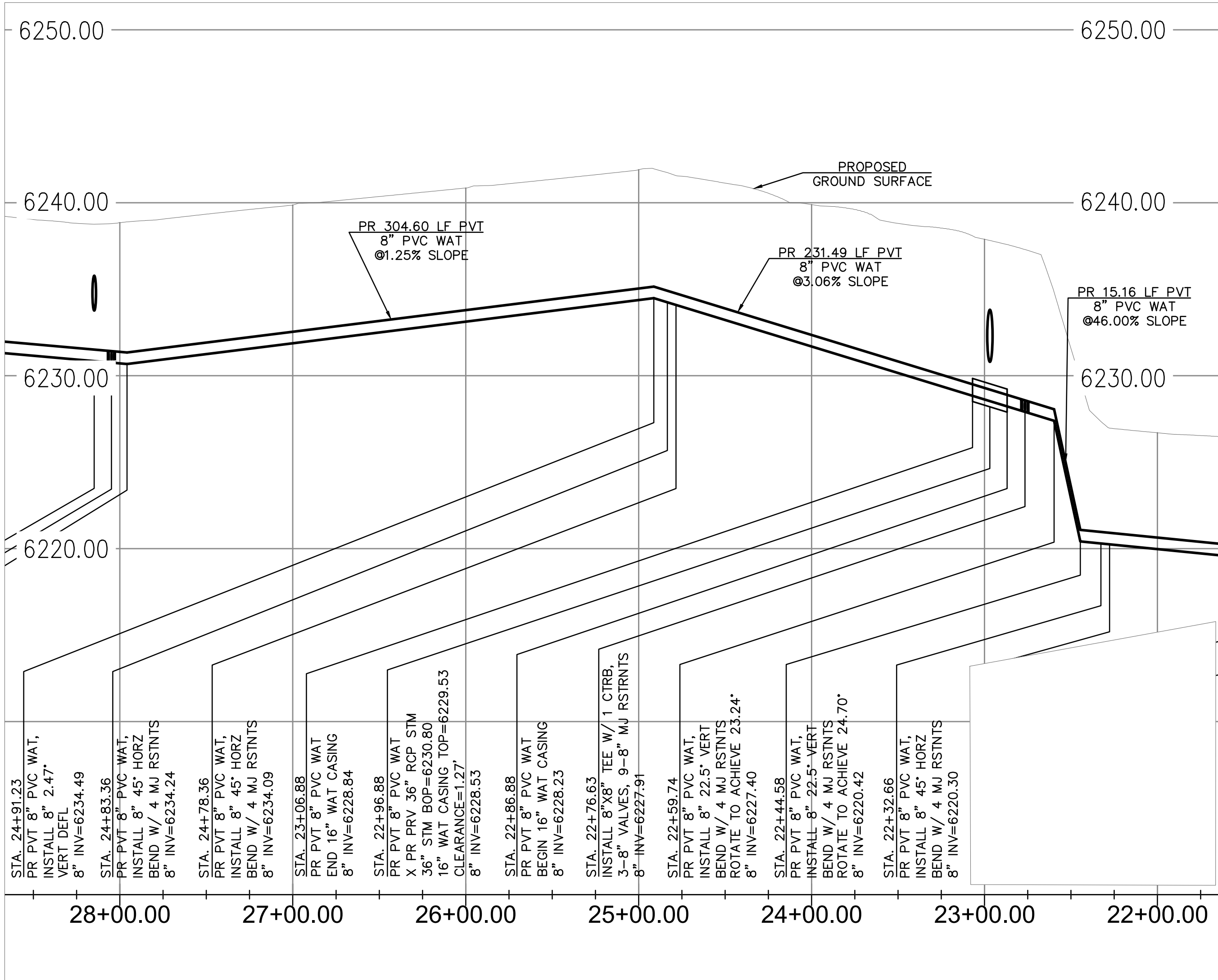
PR WATER MAIN - PLAN VIEW



PR WATER MAIN - PLAN VIEW



PR WATER MAIN - PROFILE VIEW
HORZ SCALE 1" = 50'
VERT SCALE 1" = 5'

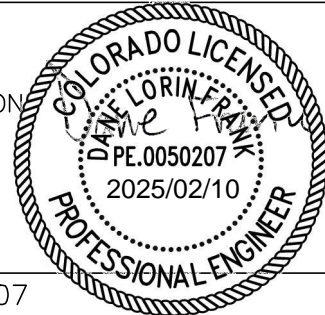


PR WATER MAIN - PROFILE VIEW
HORZ SCALE 1" = 50'
VERT SCALE 1" = 5'

APPROVALS

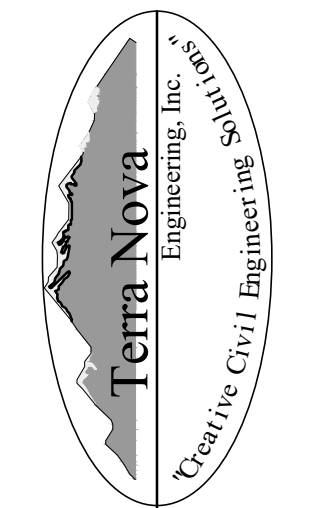
PREPARED UNDER MY DIRECT SUPERVISION OF TERRA NOVA
ENGINEERING, INC.

Dane Frank
DANE FRANK, COLORADO P.E. #50207



REVISIONS	NO.	DESCRIPTION	DATE
UNTIL SUCH TIME AS THESE DRAWINGS ARE APPROVED BY THE REVIEWING AGENCIES, TERRA NOVA ENGINEERING, INC. APPROVES THEIR USE ONLY FOR THE PROJECT DESIGNATED BY WRITTEN AUTHORIZATION.			

PREPARED FOR:
RMG-ROCKY MOUNTAIN GROUP
ATTN:
5085 LIST DR, #200
COLORADO SPRINGS, CO 80919
719.548.0600



721 S. 23RD STREET
COLORADO SPRINGS, CO 80904
OFFICE: 719-635-6422
FAX: 719-635-6426
www.tnainc.com

PLATTE SELF STORAGE

WATER & UTILITY SERVICE PLAN
WATER MAIN PLAN & PROFILE

DESIGNED BY DLF	
DRAWN BY DLF	
CHECKED BY LD	
H-SCALE AS SHOWN	
V-SCALE AS SHOWN	
JOB NO. 2419.00	
DATE ISSUED 01/14/25	
SHEET NO. 6 OF 7	

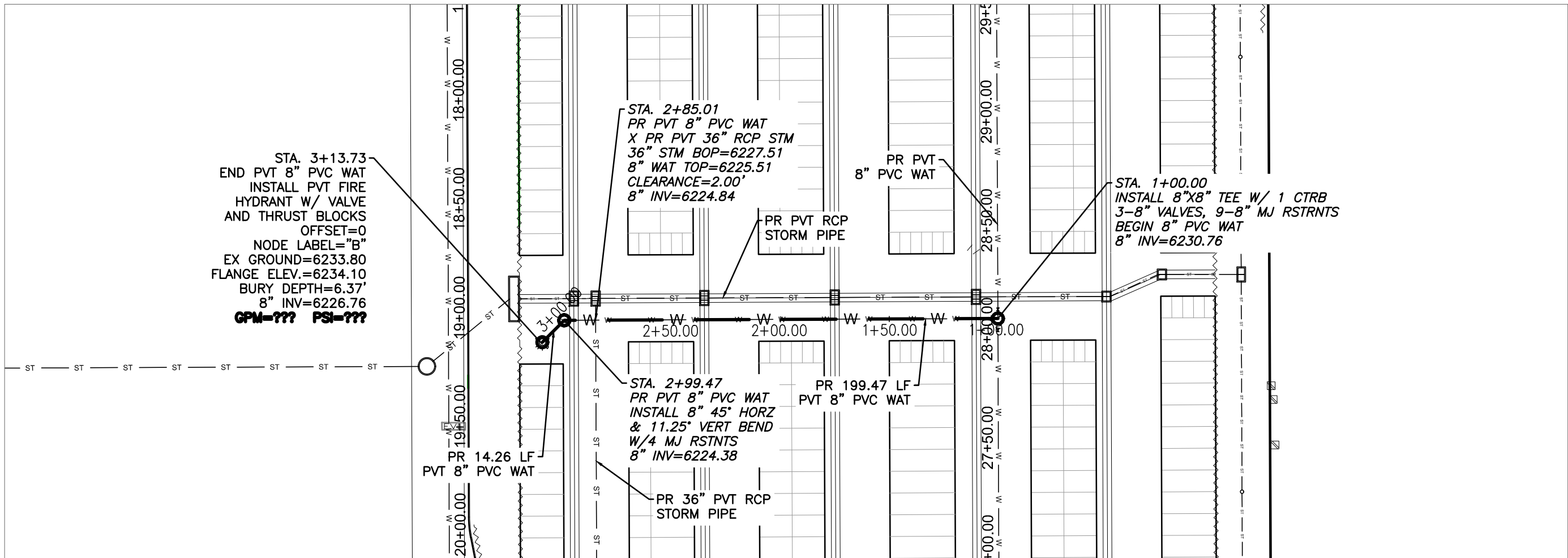
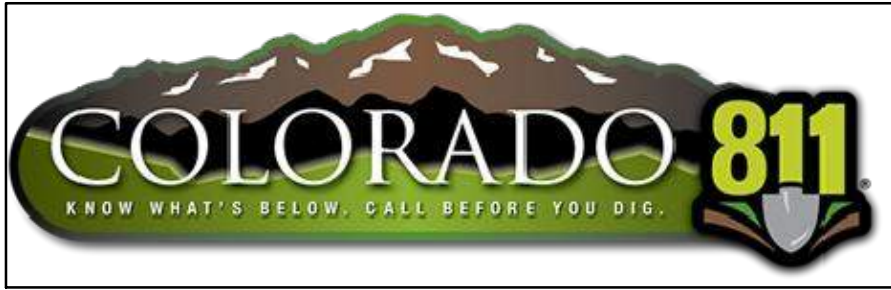
N:\Jobs\2419.00\Drawings\241900 UTIL.dwg, 2/7/2025 2:26:53 PM

LEGEND

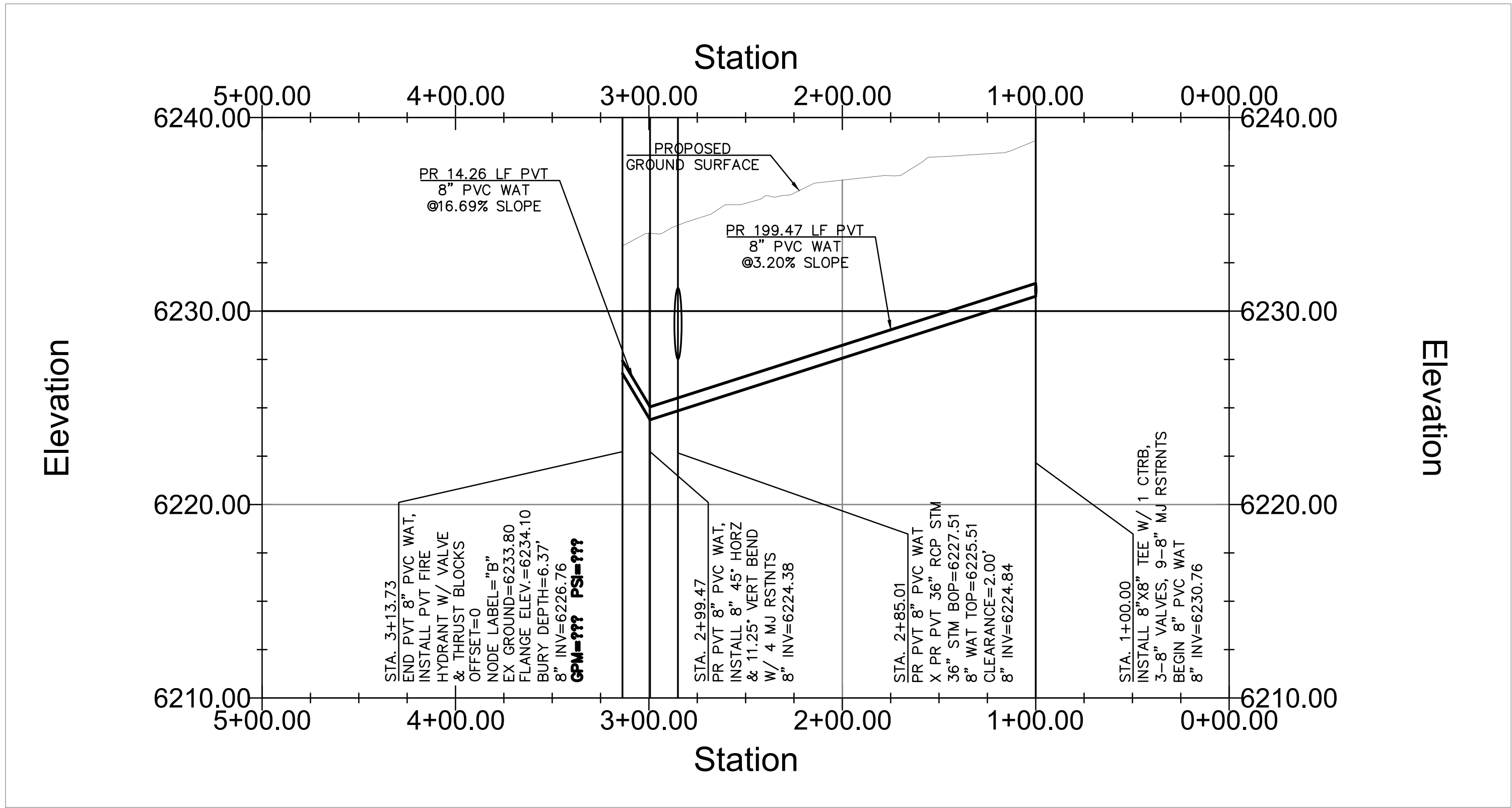
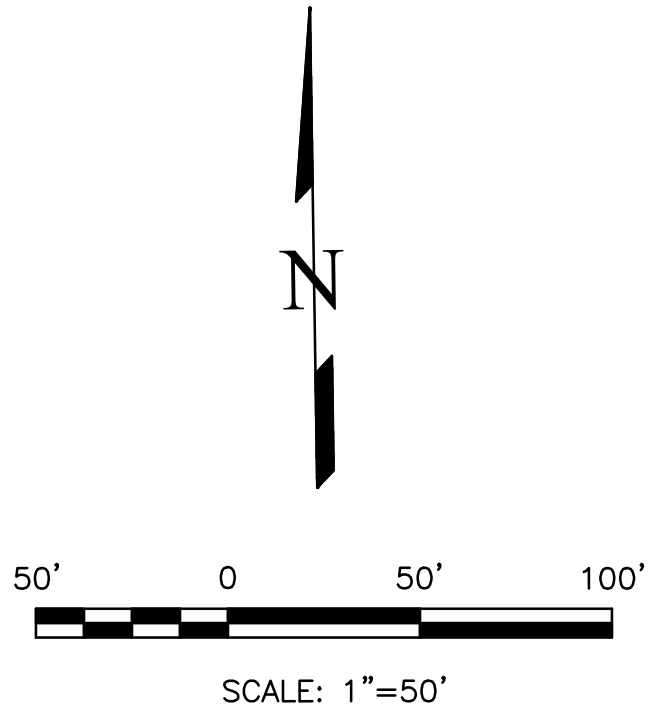
PROPOSED	PR
EXISTING	EX
WATER LINE	— W — W —
SEWER LINE	— SS — SS —
STORM LINE	— ST — ST —
UNDERGROUND ELECTRIC LINE	— UE — UE —
CHAIN LINK FENCE	— □ — □ — □ —
FIRE HYDRANT	— (HYDRANT) —
GAS LINE	— UG —
FIBER OPTIC LINE	— FO — FO —

PLATTE SELF STORAGE
WATER & UTILITY SERVICE PLAN
WATER MAIN PLAN & PROFILE
JANUARY 2025

NOTE: ALL EXISTING UNDERGROUND AND ABOVE GROUND UTILITY LOCATIONS, INVERTS AND SIZES ARE APPROXIMATE ONLY AND MUST BE FIELD VERIFIED PRIOR TO CONSTRUCTION. TIE IN POINTS SHALL BE POTHOLED AND LOCATIONS, INVERTS AND SIZES SHALL BE FIELD VERIFIED BY THE CONTRACTOR PRIOR TO CONSTRUCTION.



PR HYDRANT LATERAL – PLAN VIEW



PR HYDRANT LATERAL – PROFILE VIEW
HORZ SCALE 1" = 50'
VERT SCALE 1" = 5'

APPROVALS

PREPARED UNDER MY DIRECT SUPERVISION OF TERRA NOVA ENGINEERING, INC.

Dane Frank

DANE FRANK, COLORADO P.E. #50207



DATE

PLATTE SELF STORAGE

WATER & UTILITY SERVICE PLAN
WATER MAIN PLAN & PROFILE

DESIGNED BY DLF

DRAWN BY DLF

CHECKED BY LD

H-SCALE AS SHOWN

V-SCALE AS SHOWN

JOB NO. 2419.00

DATE ISSUED 01/14/25

SHEET NO. 7 OF 7

PREPARED FOR:

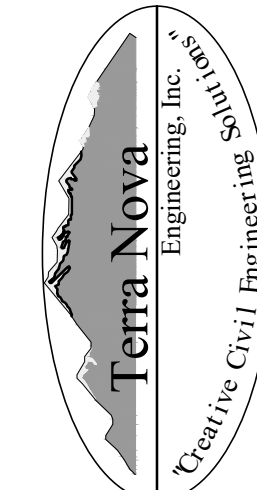
RMG-ROCKY MOUNTAIN GROUP

ATTN:

5085 LIST DR, #200

COLORADO SPRINGS, CO 80919

719.548.0600



721 S. Z3RD STREET
COLORADO SPRINGS, CO 80904

OFFICE: 719-635-6422

FAX: 719-635-6426

www.tnainc.com

REVISIONS

NO.	DESCRIPTION	DATE

UNTIL SUCH TIME AS THESE DRAWINGS ARE APPROVED FOR CONSTRUCTION BY THE TERRA NOVA ENGINEERING, INC. APPROVES THEIR USE ONLY FOR THE PROJECT DESIGNATED BY WRITTEN AUTHORIZATION.