

EL PASO  **COUNTY**
COLORADO

COMMISSIONERS:
MARK WALLER (CHAIR)
LONGINOS GONZALEZ, JR. (VICE-CHAIR)

HOLLY WILLIAMS
STAN VANDERWERF
CAMI BREMER

PLANNING AND COMMUNITY DEVELOPMENT DEPARTMENT
CRAIG DOSSEY, EXECUTIVE DIRECTOR

1/12/2021

RE: 14244 Tern Drive – Lot Coverage Administrative Relief

File: ADR-20-019
Parcel ID No.: 7201103026

To Whom It May Concern:

This letter is to inform property owners adjacent to 14244 Tern Drive that the applicant, Sharon Regier, has requested approval of an application for administrative relief to allow a lot coverage of 42% where a maximum of 40% is allowed within the Planned Unit Development (PUD) zoning district.

The Planning and Community Development Director may make a formal decision regarding the administrative relief application on 1/22/2021. Any comments or questions may be forwarded to me prior to that decision. Administrative approval by the Planning and Community Development Director is subject to the appeal provisions of the Land Development Code.

You may view the application documents online at www.epcdevplanreview.com. Please feel free to contact me with any questions, comments, or concerns you may have prior to the decision.

Respectfully,

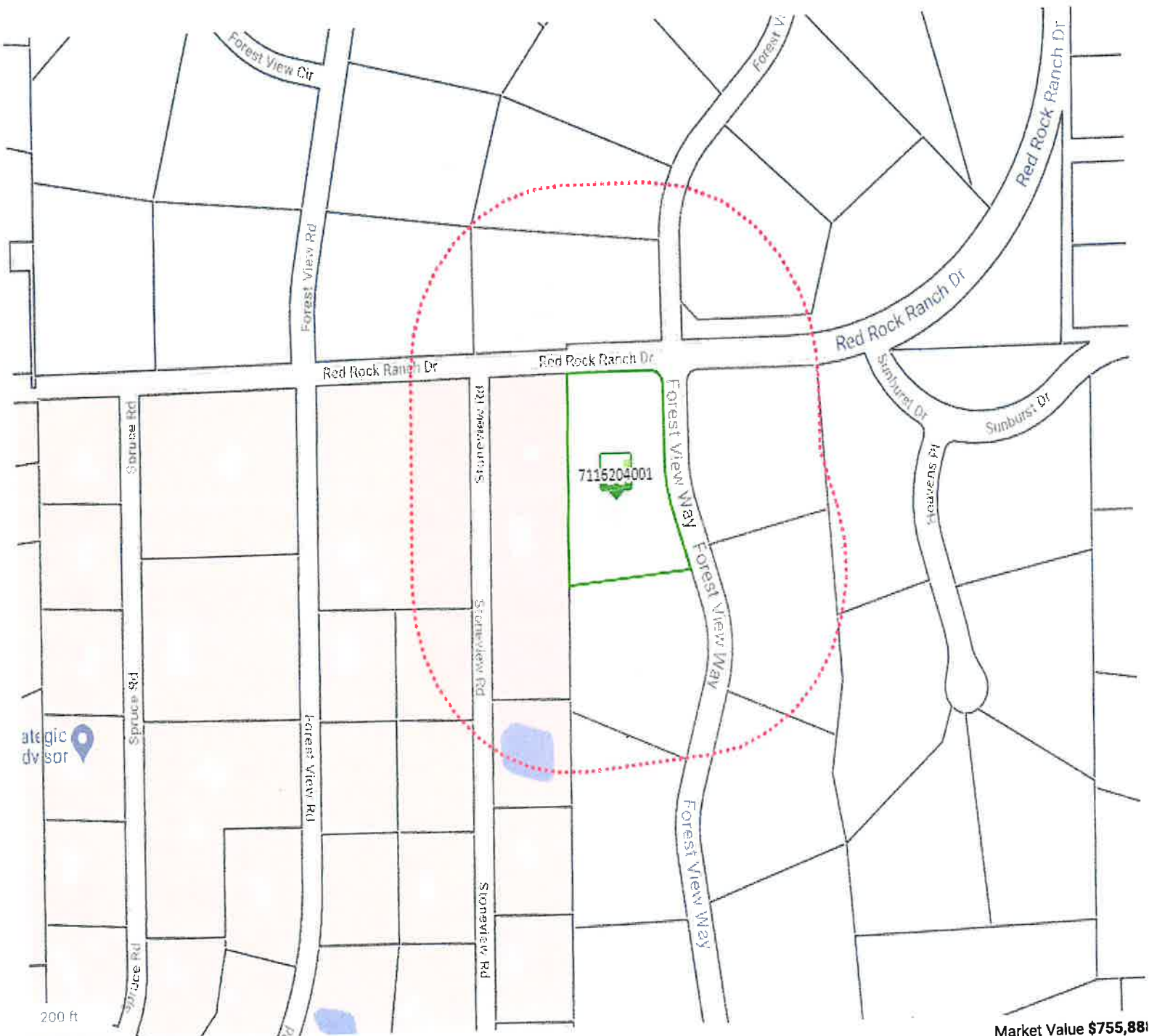
John Green
El Paso County Planning and Community Development
719-520-6442
johngreen@elpasoco.com

2880 INTERNATIONAL CIRCLE, SUITE 110
PHONE: (719) 520-6300



COLORADO SPRINGS, CO 80910-3127
FAX: (719) 520-6695

WWW.ELPASOCO.COM



Market Value **\$755,881**

'08 FOREST VIEW WAY

Map Data: Aerial 2017



7116204001
 MANZO KENNETH PETER,
 MANZO KERRY MARGARET
 REGAN

Disclaimer

We have made a good-faith effort to provide you with the most recent and most accurate information available. However, if you need to use this information in any legal or official venue, you will need to obtain official copies from the Assessor's Office. Do be aware that this data is subject to change on a daily basis. If you believe that any of this information is incorrect, please call us at (719) 520-6600.