

Post Construction Stormwater Management Applicability Evaluation Form

This form is to be used by the Engineer of Record to evaluate applicable construction activities. If the activities are eligible for an exclusion to permanent stormwater quality management, the Engineer of Record must complete this form. Additionally Part III of the form is used to identify and document which allowable construction standard is used for the structure.

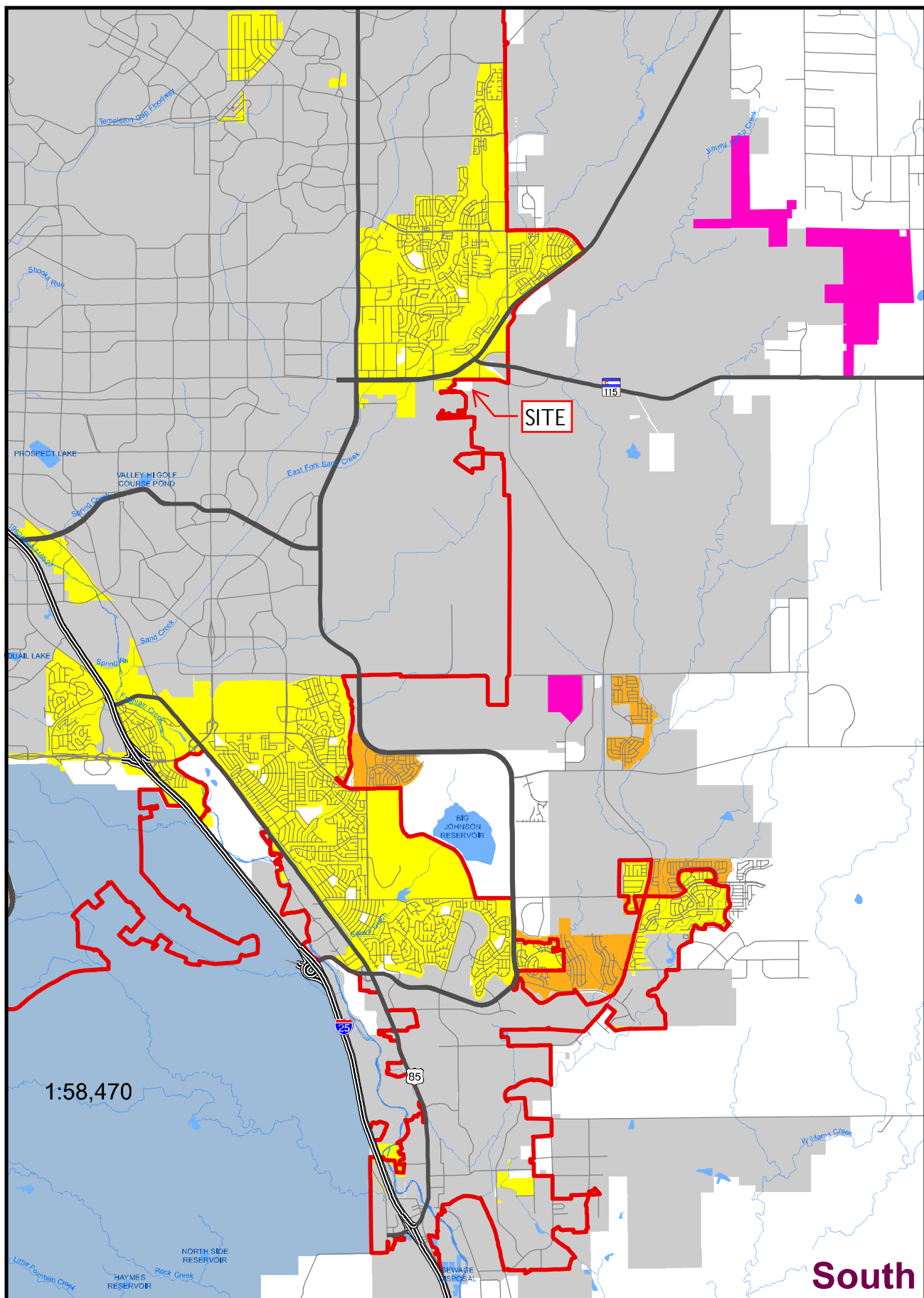
Please revise to "Y". The northwest section of the property is in the MS4 Permit Area.

Part I. Project Information	
1. Project Name:	
2. El Paso County Project #:	3. ESQCP #:
4. Project Location:	Project Location in MS4 Permit Area (Y or N):
5. Project Description:	
If project is located within the El Paso County MS4 Permit Area, please provide copy of this completed form to the Stormwater Quality Coordinator for reporting purposes; and save completed form with project file.	

Part II. Exclusion Evaluation: Determine if Post-Construction Stormwater Management exclusion criteria are met. Note: Questions A thru K directly correlate to the MS4 permit Part I.E.4.a.i (A) thru (K). If Yes, to any of the following questions, then mark Not Applicable in Part III, Question 2.				
Questions	Yes	No	Not Applicable	Notes:
A. Is this project a "Pavement Management Site" as defined in Permit Part I E.4.a.i. (A)?				This exclusion applies to "roadways" only. Areas used primarily for parking or access to parking are not included.
B. Is the project "Excluded Roadway Development"?				
• Does the site add less than 1 acre of paved area per mile?				
• Does the site add 8.25 feet or less of paved width at any location to the existing roadway?				
C. Does the project increase the width of the existing roadway by less than 2 times the existing width?				For redevelopment of existing roadways, only the area of the existing roadway is excluded from post-construction requirements when the site does not increase the width by two times or more. <i>This exclusion only excludes the original roadway area it does NOT apply to entire project.</i>
D. Is the project considered an aboveground and Underground Utilities activity?				Activity can NOT permanently alter the terrain, ground cover or drainage patterns from those present prior to the activity
E. Is the project considered a "Large Lot Single-Family Site"?				Must be a single-residential lot or agricultural zoned land, ≥ 2.5 acres per dwelling and total lot impervious area < 10 percent.

Questions (cont'd)	Yes	No	Not Applicable	Notes
F. Do Non-Residential or Non-Commercial Infiltration Conditions exist? Post-development surface conditions do not result in concentrated stormwater flow or surface water discharge during an 80 th percentile stormwater runoff event.				Exclusion does not apply to residential or commercial sites for buildings. A site specific study is required and must show: rainfall and soil conditions; allowable slopes; surface conditions; and ratios of imperviousness area to pervious area.
G. Is the project land disturbance to Undeveloped Land where undeveloped land remains undeveloped following the activity?				Project must be on land with no human made structures such as buildings or pavement.
H. Is the project a Stream Stabilization Site?				Standalone stream stabilization projects are excluded.
I. Is the project a bike or pedestrian trail?				Bike lanes for roadways are not included in this exclusion, but may qualify if part of larger roadway activity is excluded in A, B or C above.
J. Is the project Oil and Gas Exploration?				Activities and facilities associated with oil and gas exploration are excluded.
K. Is the project in a County Growth Area?				Note, El Paso County does not apply this exclusion. All Applicable Construction Activity in El Paso County must comply the Post-Construction Stormwater Management criteria.

Part III. Post Construction (Permanent) Stormwater Control Determination		
Questions	Yes	No
1. Is project an Applicable Construction Activity?		
2. Do any of the Exclusions (A-K in Part II) apply?		
<p>If the project is an Applicable Construction Activity and no Exclusions apply then Post-Construction (Permanent) Stormwater Management is required. Complete the applicable sections of Part IV below and then coordinate signatures for form and place in project file.</p> <p>If the project is not an Applicable Construction Activity, or Exclusion(s) apply then Post-Construction (Permanent) Stormwater Management is NOT required. Coordinate signatures for form and place in project file.</p>		



South



URBAN AREA
South Map

2022 El Paso County MS4 Permit Area - Urban Areas CDPS Stormwater Management Program CDPS Permit No. COR-090011

Legend

- 2022 Existing MS4 Permit Area
- 2021 Incorp Area Changes
- 2020 County Growth Areas
- Incorporated Areas
- 2010 Census Urban Area

REPRODUCED TO BE AVAILABLE TO THE PUBLIC
THRU DECEMBER 2021

Program area boundary based on 2010 Census
Urbanized Area from US Census Bureau
geographic products on file. Adjustments to it
El Paso County boundary, coordinates and
judgments on including small low density areas
were made by El Paso County Staff.

CDPS Permit 2022 by the Board of County
Commissioners, El Paso County, Colorado,
all rights reserved. No part of this document
or data contained herein may be reproduced
used to prepare derivative products, or distributed
without the specific written approval of the Board of
County Commissioners, El Paso County, Colorado.
This document was prepared from the best data
available at the time of printing and is for internal
use only. El Paso County, Colorado, makes no
claim as to the completeness or accuracy of
the data contained herein.