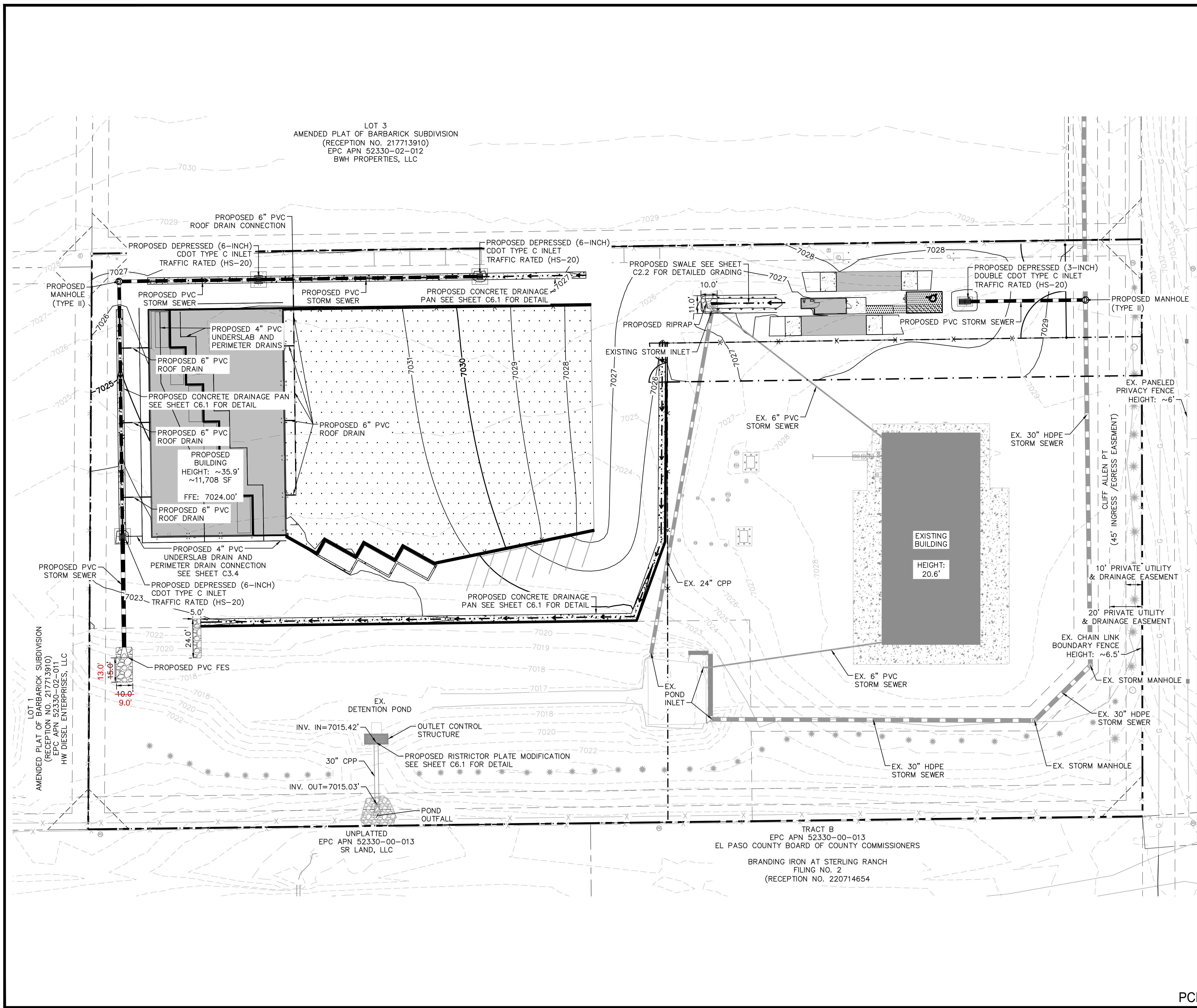


K:\COS_Civil\196489000_Barbarick Waste Transfer\CADD\PlanSheets\CDs\CD_OVR_STRM_196489000.dwg Schmelbach, Ryan 5/7/2024 10:07 AM



LEGEND

	PROPERTY LINE
	LEASED PARCEL BOUNDARY
	EXISTING UTILITY & DRAINAGE EASEMENT
	EXISTING FENCE
	EXISTING STORM SEWER
	EXISTING GAS MAIN
	EXISTING VEGETATION
	EXISTING TRANSFORMER
	PROPOSED FLOW LINE
	PROPOSED STORM SEWER
	PROPOSED PERIMETER/UNDERSLAB DRAIN
	PROPOSED STORM INLET
	PROPOSED ASPHALT
	PROPOSED CONCRETE

NOTES

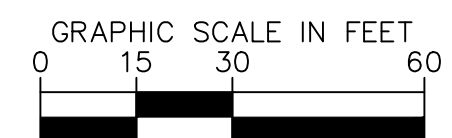
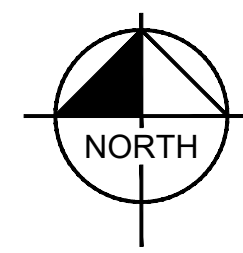
- SEE SHEETS C3.1 - C3.3 FOR DETAILED STORM PLAN AND PROFILES
- SEE SHEET C3.4 FOR DETAILED DRAIN PLAN
- SEE SHEET C6.0 FOR INLET AND MANHOLE DETAILS
- SEE SHEET C6.1 FOR CONCRETE DRAINAGE PAN DETAIL
- ALL PROPOSED STORMWATER INFRASTRUCTURE DEPICTED ON THESE PLANS IS TO BE PRIVATELY OWNED AND MAINTAINED UNLESS OTHERWISE NOTED

CAUTION NOTE

- CONTRACTOR SHALL MAINTAIN 1.5' OF VERTICAL SEPARATION AT ALL WET UTILITY CROSSINGS.
- CONTRACTOR SHALL MAINTAIN 1.0' OF VERTICAL SEPARATION AT ALL DRY UTILITY CROSSINGS.

RECORD DRAWING

THESE RECORD DRAWINGS HAVE BEEN PREPARED BY KIMLEY-HORN AND ASSOCIATES, INC. BASED ON FIELD OBSERVATION AND MEASUREMENT. THESE RECORD DRAWINGS ARE NOT GUARANTEED TO BE "AS-BUILT", BUT RATHER BASED ON CONFIRMING THE MODIFICATIONS TO THE EXISTING PCM TO BE IN COMPLIANCE WITH DESIGN DOCUMENTS.



PCD FILE NO. COM2346

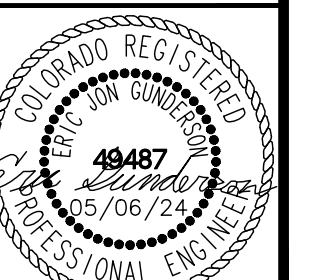


Kimley»Horn

2024 KIMLEY-HORN AND ASSOCIATES, INC.
2 North Nevada Avenue Suite 900
Colorado Springs, Colorado 80903 (719) 453-0180

DESIGNED BY: E/JG
DRAWN BY: RES
CHECKED BY: E/JG
DATE: 5/6/2024

BARBARICK WASTE TRANSFER STATION
EL PASO COUNTY, COLORADO
CONSTRUCTION DOCUMENTS
OVERALL STORM PLAN

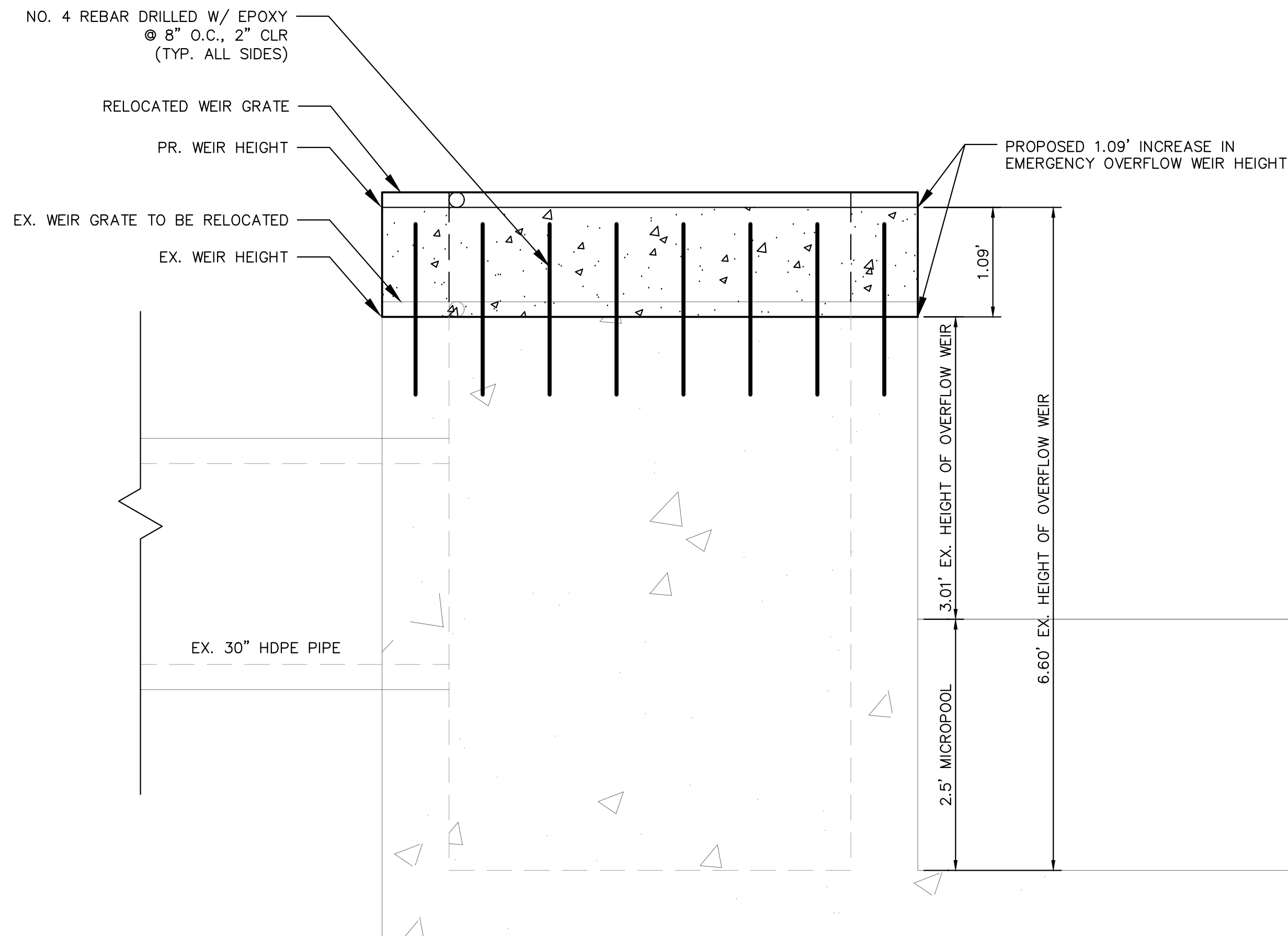


PROJECT NO.
196489000

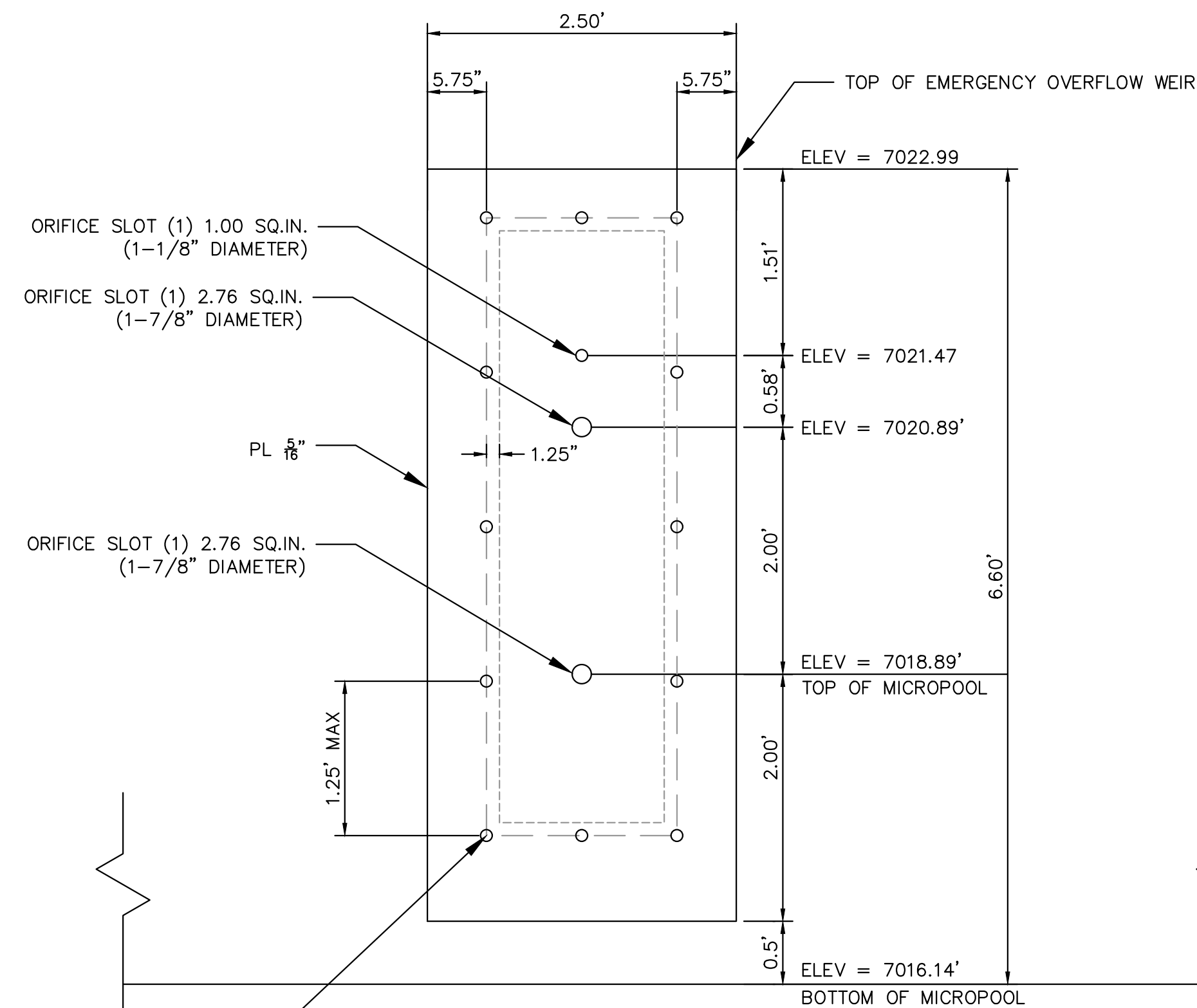
SHEET

C3.0

K:\cos_civil\196489000_barbarick waste transfer\CADD\plansheets\CDs\CD_DT-196489000.dwg Schnelbach, Ryan 5/1/2025 10:33 AM

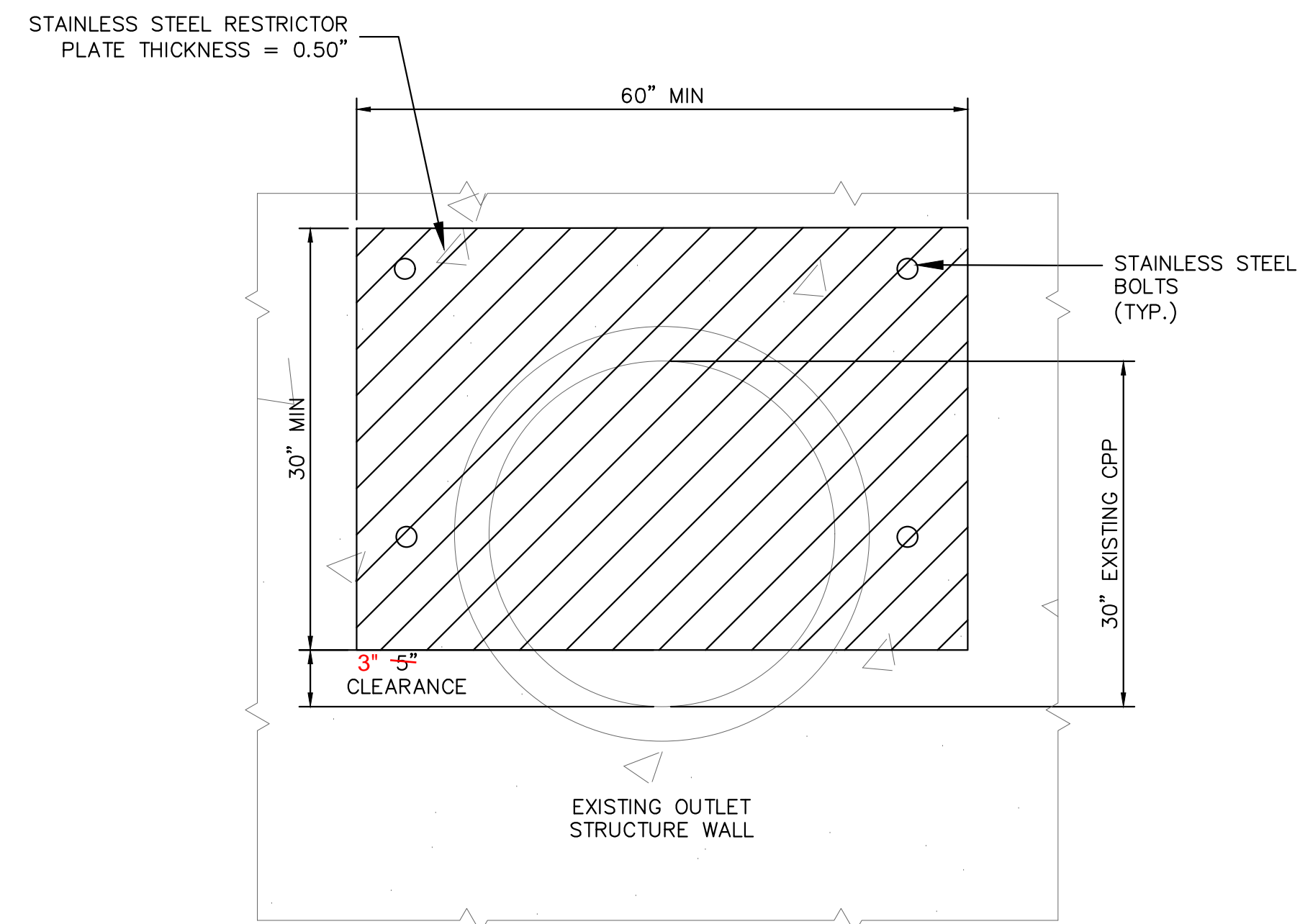


EXISTING OUTLET STRUCTURE MODIFICATION
1" = 1'



ORIFICE PLATE MODIFICATION
1" = 1'

- ORIFICE PLATE SHALL BE 0.50" IN THICKNESS
- CONTRACTOR SHALL INSTALL WATER TIGHT RUBBER GASKET OR EQUIVALENT SEALANT BETWEEN CONCRETE AND STEEL PLATE



RESTRICTOR PLATE MODIFICATION
1" = 1'

RECORD DRAWING

THESE RECORD DRAWINGS HAVE BEEN PREPARED BY KIMLEY-HORN AND ASSOCIATES, INC. BASED ON FIELD OBSERVATION AND MEASUREMENT. THESE RECORD DRAWINGS ARE NOT GUARANTEED TO BE "AS-BUILT", BUT RATHER BASED ON CONFIRMING THE MODIFICATIONS TO THE EXISTING PCM TO BE IN COMPLIANCE WITH DESIGN DOCUMENTS.

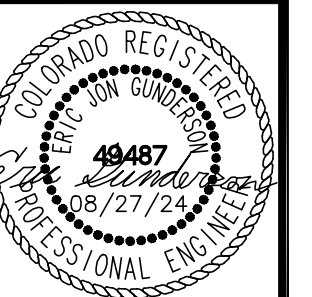


Kimley»Horn

2024 KIMLEY-HORN AND ASSOCIATES, INC.
2 North Nevada Avenue Suite 900
Colorado Springs, Colorado 80903 (719) 453-0180

DESIGNED BY: E.J.G.
DRAWN BY: RES
CHECKED BY: E.J.G.
DATE: 05/01/2025

BARBARICK WASTE TRANSFER STATION
EL PASO COUNTY, COLORADO
CONSTRUCTION DOCUMENTS
POND DETAILS



PROJECT NO.
196489000

SHEET

C6.2

PCD FILE NO. COM2346