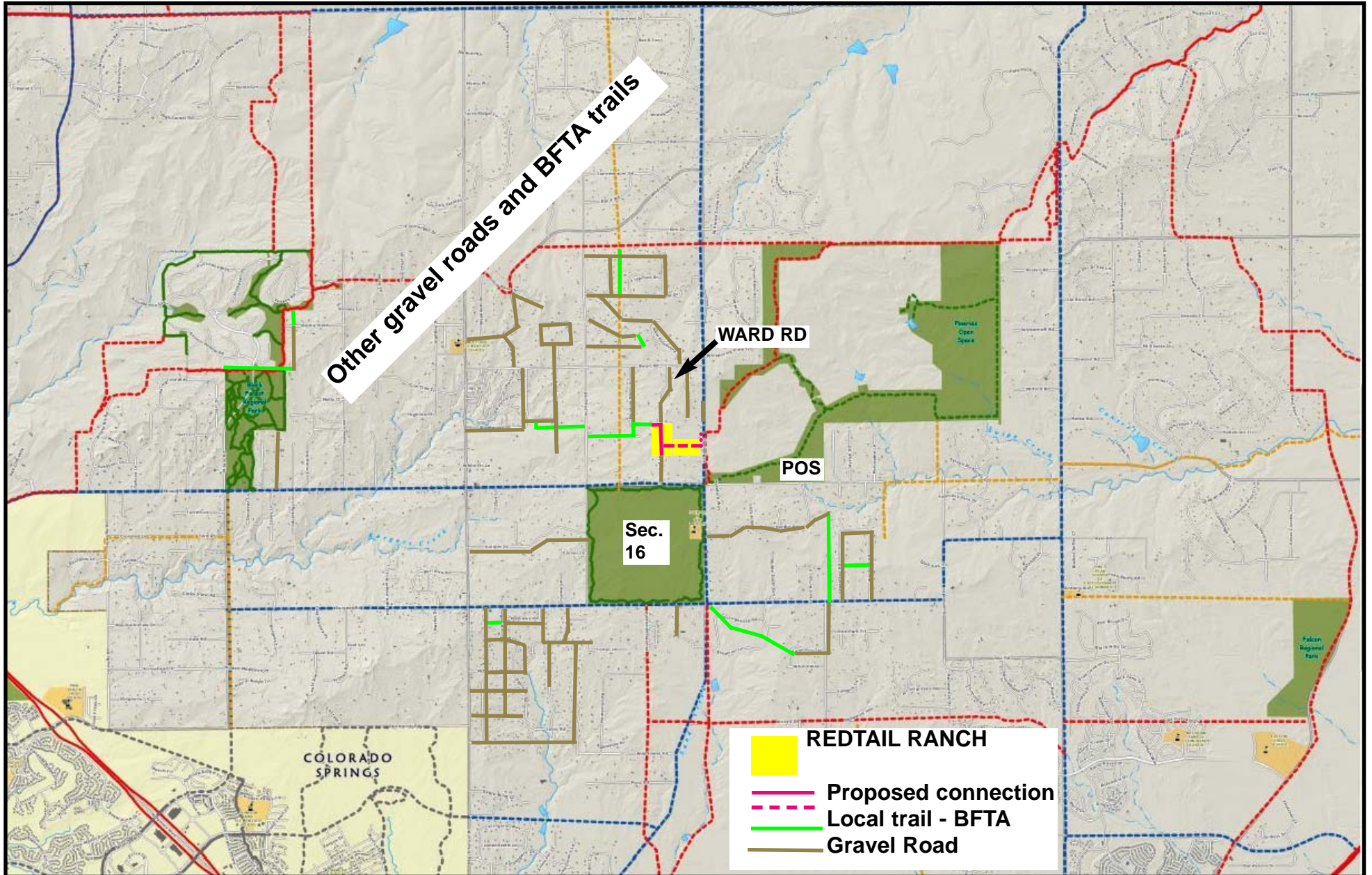


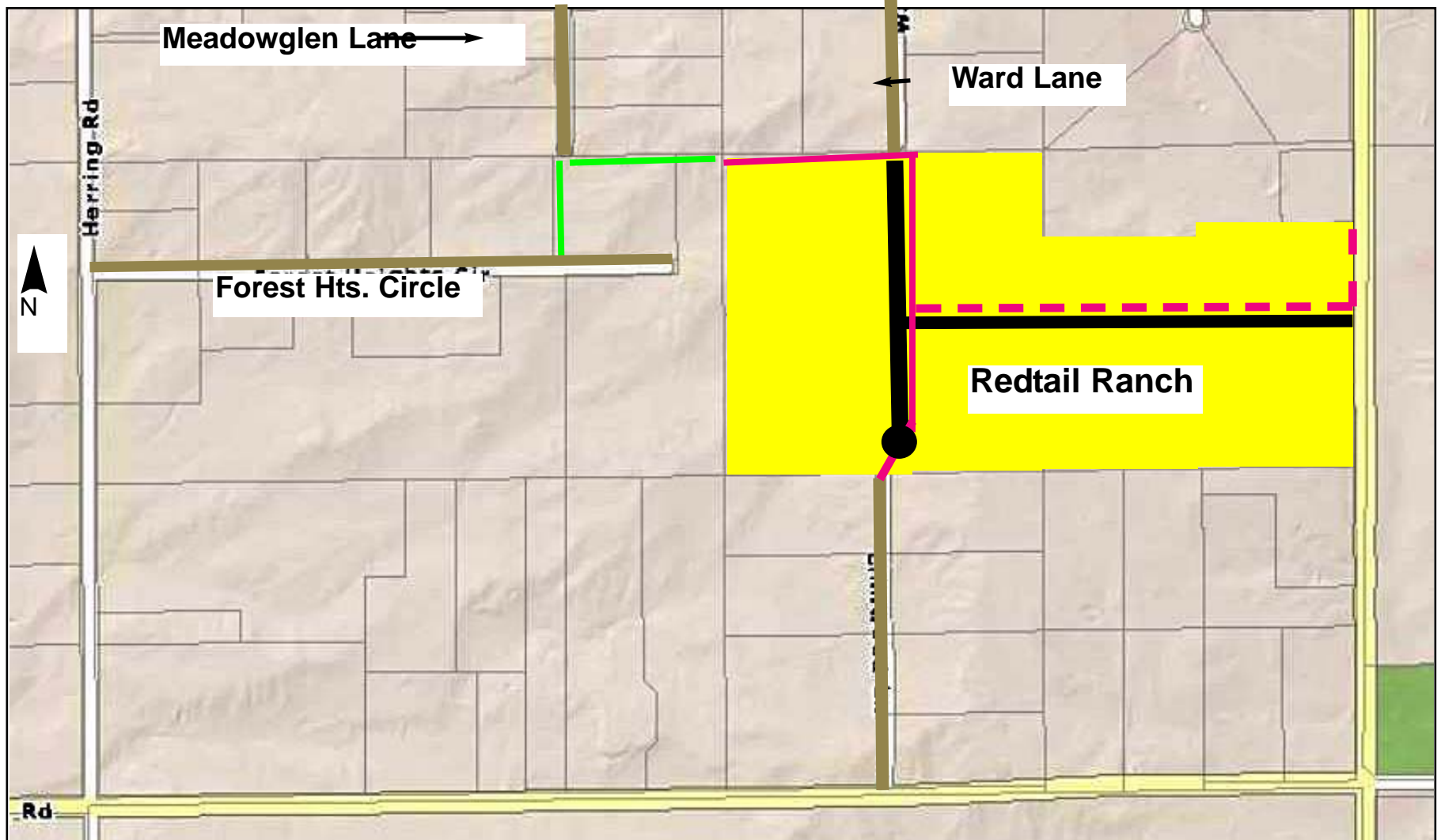
Regional Trail Basemap (County Parks) and Black Forest Local Trails Per Black Forest Trails Association (BFTA)

Redtail Ranch Subdivision Trail/Emergency Access Connection 8-28-18



Detail of Redtail Ranch Trail Proposal

08-28-2018



- 15- foot trail would be coincident with unfenced utility easements and existing former driveway off north end of Linnwood Ln
- Trail would connect to Meadowglen Lane using BFTA easements over two private properties - also 15 foot easements
- Non-motorized multiuse local trail to connect BFTA trail network on the north to Regional Trail on Sec 16 to the south (existing Linnwood lane access) and future connection along Sanctuary Pines Trail to Pineries Open Space at entrance
- Trail over private lands and also over existing driveway would also provide emergency access to Black Forest Fire and Rescue with 15' driveable width.
- Linnwood access to be gated over road entry but with pass-through for trail adjacent
- Trail signs by Black Forest Trails Association. Fence setbacks along pertinent utility easements.