

PLANTING SCHEDULE

SITE CATEGORY	SYMBOL	PLANTING SIZE	MIN. QTY. REQ'D.	QTY. PROVIDED	COMMON BOTANICAL
ZONING DISTRICT BOUNDARY AREA 1 NON-STREET BUFFER	[Symbol]	1.50" cal.	(1ea. tree required per 20' 532' = 64 trees)	21	RIO GRAND COTTONWOOD (<i>Populus Fremonti</i>); b&b nursery grown trees
		1.50" cal.		11	WESTERN CATALPA (<i>Catalpa speciosa</i>); b&b nursery grown trees
		6" ht.		15	PINON PINE (<i>Pinus edulis</i>); b&b collected or nursery grown trees
		6" ht.		17	COLOGREEN JUNIPER (<i>Juniperus scopulorum</i> "Cologreen"); b&b nursery grown trees
64					
ZONING DISTRICT BOUNDARY AREA 2 NON-STREET BUFFER	[Symbol]	1.50" cal.	(1ea. tree required per 20' 532' = 27 trees)	5	WESTERN CATALPA (<i>Catalpa speciosa</i>); b&b nursery grown trees
		1.50" cal.		5	RIO GRAND COTTONWOOD (<i>Populus Fremonti</i>); b&b nursery grown trees
		6" ht.		14	PINON PINE (<i>Pinus edulis</i>); b&b collected or nursery grown trees
		6" ht.		3	COLOGREEN JUNIPER (<i>Juniperus scopulorum</i> "Cologreen"); b&b nursery grown trees
27					
ZONING DISTRICT BOUNDARY AREA 3 NON-STREET BUFFER	[Symbol]	1.50" cal.	(1ea. tree required per 20' 1,645' = 82 trees)	15	WESTERN CATALPA (<i>Catalpa speciosa</i>); b&b nursery grown trees
		1.50" cal.		31	RIO GRAND COTTONWOOD (<i>Populus Fremonti</i>); b&b nursery grown trees
		6" ht.		21	PINON PINE (<i>Pinus edulis</i>); b&b collected or nursery grown trees
		6" ht.		15	COLOGREEN JUNIPER (<i>Juniperus scopulorum</i> "Cologreen"); b&b nursery grown trees
82					
ZONING DISTRICT BOUNDARY AREA 4 NON-STREET BUFFER	[Symbol]	1.50" cal.	(1ea. tree required per 20' 1,162' = 60 trees)	10	WESTERN CATALPA (<i>Catalpa speciosa</i>); b&b nursery grown trees
		1.50" cal.		16	RIO GRAND COTTONWOOD (<i>Populus Fremonti</i>); b&b nursery grown trees
		6" ht.		14	PINON PINE (<i>Pinus edulis</i>); b&b collected or nursery grown trees
		6" ht.		20	COLOGREEN JUNIPER (<i>Juniperus scopulorum</i> "Cologreen"); b&b nursery grown trees
60					
MINOR ARTERIAL BOUNDARY AREA 5 25' Width Landscape Buffer	[Symbol]	1.50" cal.	(1ea. tree required per 20' 1,162' = 58 trees)	10	NARROWLEAF COTTONWOOD (<i>Populus angustifolia</i>); b&b nursery grown trees
		1.50" cal.		10	KENTUCKY COFFEETREE (<i>Gymnocladus dioica</i>); b&b nursery grown trees
		1.50" cal.		10	WESTERN HACKBERRY (<i>Celtis occidentalis</i>); b&b nursery grown trees
		6" ht.		10	AUSTRIAN PINE (<i>Pinus nigra</i>); b&b nursery grown trees
13					
MINOR ARTERIAL BOUNDARY AREA 6 25' Width Landscape Buffer	[Symbol]	1.50" cal.	(1ea. tree required per 20' 1,444' = 72 trees)	10	NARROWLEAF COTTONWOOD (<i>Populus angustifolia</i>); b&b nursery grown trees
		1.50" cal.		10	KENTUCKY COFFEETREE (<i>Gymnocladus dioica</i>); b&b nursery grown trees
		1.50" cal.		10	WESTERN HACKBERRY (<i>Celtis occidentalis</i>); b&b nursery grown trees
		6" ht.		10	AUSTRIAN PINE (<i>Pinus nigra</i>); b&b nursery grown trees
13					
72					

PIKES PEAK BOCES LANDSCAPE DEVELOPMENT PLAN

PLANTING SCHEDULE CONT'D.

SITE CATEGORY	SYMBOL	PLANTING SIZE	MIN. QTY. REQ'D.	QTY. PROVIDED	COMMON BOTANICAL
MINOR ARTERIAL BOUNDARY AREA 7 25' Width Landscape Buffer	[Symbol]	1.50" cal.	(1ea. tree required per 20' 1,248' = 62 trees)	13	NARROWLEAF COTTONWOOD (<i>Populus angustifolia</i>); b&b nursery grown trees
		1.50" cal.		9	KENTUCKY COFFEETREE (<i>Gymnocladus dioica</i>); b&b nursery grown trees
		1.50" cal.		9	WESTERN HACKBERRY (<i>Celtis occidentalis</i>); b&b nursery grown trees
		6" ht.		14	AUSTRIAN PINE (<i>Pinus nigra</i>); b&b nursery grown trees
17					
INTERNAL AREA 5% of Parcel landscape requirement 68.38 ac x .05 = 4.39 ac.	[Symbol]	1.50" cal.	(1ea. tree required per 500sf = 376 trees)	52	BUR OAK (<i>Quercus macrocarpa</i>); b&b nursery grown trees
		1.50" cal.		18	THORNLESS HONEYLOCUST (<i>Gleditsia truncanthis inermis</i>); b&b nursery grown trees
		1.50" cal.		76	SHADBLOW SERVICEBERRY (<i>Amygdalochrysanthes canadensis</i>); b&b nursery grown trees
		6" ht.		11	PINON PINE (<i>Pinus edulis</i>); b&b collected or nursery grown trees
45					
71					
376					

LANDSCAPE KEY

- IRRIGATED TURF GRASS: Bluegrass/Fescue blended maintained turf grass. (11,585 sq. ft. where indicated on plan).
- NON-IRRIGATED TURF GRASS: Native blended grasses, seeded/mulched. (All areas disturbed by new construction).
- MONUMENT SIGNAGE

Please consider alternate species. These are not recommended species per revised landscaping and planting manual

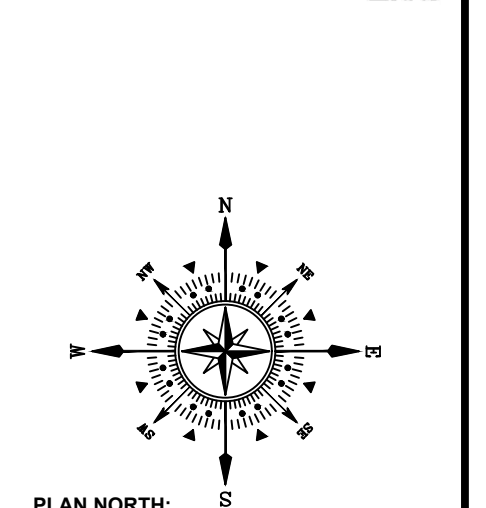


Provide site distance triangles

Provide site distance triangles



THIS DRAWING IS AN INSTRUMENT OF SERVICE AND AS SUCH REMAINS THE SOLE PROPERTY OF THE PIKES PEAK BOARD OF COOPERATIVE EDUCATIONAL SERVICES (BOCES). NO PART OF THIS DRAWING IS TO BE REPRODUCED OR TRANSMITTED IN ANY FORM OR BY ANY MEANS, ELECTRONIC OR MECHANICAL, INCLUDING PHOTOCOPYING, RECORDING, OR BY ANY INFORMATION STORAGE AND RETRIEVAL SYSTEM, WITHOUT THE WRITTEN PERMISSION OF THE PIKES PEAK BOARD OF COOPERATIVE EDUCATIONAL SERVICES. ANY REPRODUCTION OR TRANSMISSION OF THIS DRAWING WITHOUT THE WRITTEN PERMISSION OF THE PIKES PEAK BOARD OF COOPERATIVE EDUCATIONAL SERVICES IS STRICTLY PROHIBITED. THE PIKES PEAK BOARD OF COOPERATIVE EDUCATIONAL SERVICES ASSUMES NO LIABILITY FOR ANY DAMAGE OR LOSS OF PROFITS, BUSINESS, OR REPUTATION, OR FOR ANY SPECIAL, INCIDENTAL, OR CONSEQUENTIAL DAMAGES, INCLUDING ATTORNEY'S FEES, ARISING FROM THE USE OF THIS DRAWING. THE PIKES PEAK BOARD OF COOPERATIVE EDUCATIONAL SERVICES IS NOT PROVIDING ANY PROFESSIONAL SERVICES IN THE STATE OF COLORADO AND THIS DRAWING IS NOT VALID FOR CONSTRUCTION PURPOSES.



Pikes Peak BOCES
Board of Cooperative Educational Services
Judge Orr Road
Peyton, CO 80831

PROJECT NAME:
PROJECT ADDRESS:
PROJECT DESCRIPTION: Preliminary Landscape Plan

DATE: 02/21/2024
DESIGNED: WFG
CHECKED:

REVISIONS:

DATE	BY	DESCRIPTION
03/21/2024	WFG	REVISED PHASE 2 & 3 LIMITS
03/27/2024	WFG	REVISED PHASING AND LAYOUT PLAN

PLAN SCALE: 1" = 100' (OR AS NOTED ON PLAN)

SHEET TITLE:
LANDSCAPE PLAN

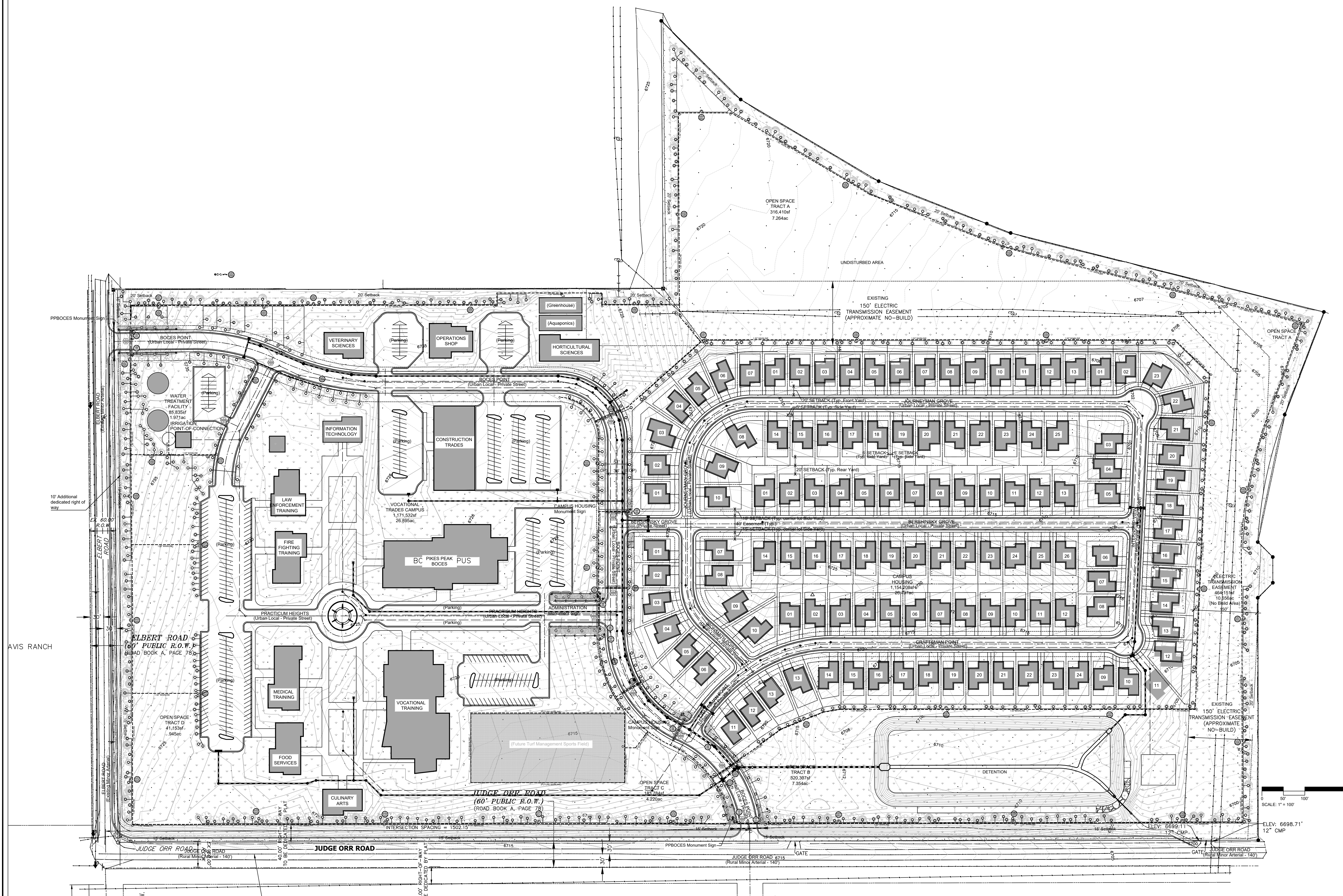
SHEET NO.
L-1

1 of 3 SHEETS

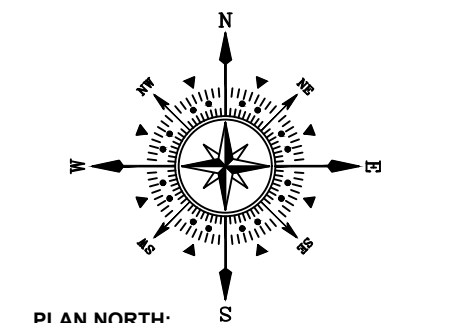
FILE NO.
FILE#

PIKES PEAK BOCES

LANDSCAPE IRRIGATION PLAN



THIS DRAWING IS AN INSTRUMENT OF SERVICE AND AS SUCH REMAINS THE SOLE PROPERTY OF THE PIKES PEAK BOARD OF COOPERATIVE EDUCATIONAL SERVICES (BOCES). ANY REVISIONS TO THIS DRAWING SHALL BE MADE BY THE ARCHITECT OR ENGINEER OF RECORD. THE ARCHITECT OR ENGINEER OF RECORD SHALL BE RESPONSIBLE FOR THE ACCURACY OF THE INFORMATION PROVIDED HEREON. THE ARCHITECT OR ENGINEER OF RECORD SHALL NOT BE RESPONSIBLE FOR THE ACCURACY OF THE INFORMATION PROVIDED BY OTHER SOURCES. THE ARCHITECT OR ENGINEER OF RECORD SHALL NOT BE RESPONSIBLE FOR THE ACCURACY OF THE INFORMATION PROVIDED BY OTHER SOURCES. THE ARCHITECT OR ENGINEER OF RECORD SHALL NOT BE RESPONSIBLE FOR THE ACCURACY OF THE INFORMATION PROVIDED BY OTHER SOURCES.



Pikes Peak BOCES
Board of Cooperative Educational Services
Judge Orr Road
Peyton, CO 80831

PROJECT NAME:
PROJECT ADDRESS:
PROJECT DESCRIPTION: Preliminary Landscape Irrigation Plan

DATE: 02/21/2024
DESIGNED: WFG
CHECKED:

REVISIONS:	DATE:	BY:	DESCRIPTION:
	03/21/2024	WFG	REVISED PHASE 2 & 3 LIMITS
	03/27/2024	WFG	REVISED PHASING AND LAYOUT PLAN

NOTES:

PLAN SCALE: 1" = 100' (OR AS NOTED ON PLAN)

SHEET TITLE:
IRRIGATION PLAN

SHEET NO.
L-2
2 of 3 SHEETS

FILE NO.
FILE#

