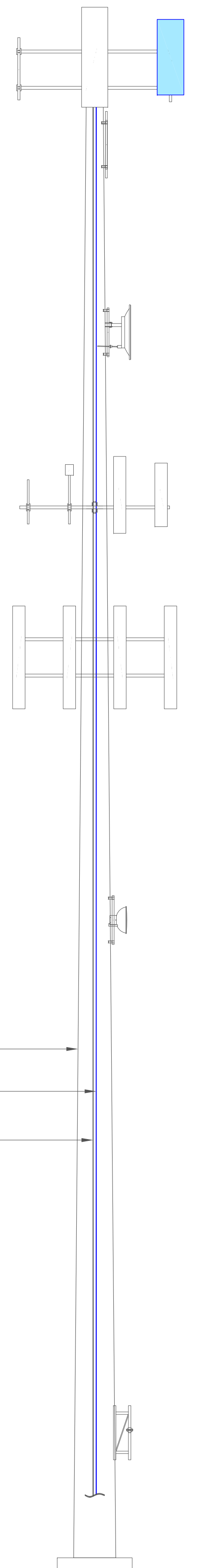


STRUCTURE W/ APPURTENANCE
ELEV. = 124'-0"

HEIGHT OF STRUCTURE
ELEV. = 120'-0"



EXISTING T-MOBILE ACL
ELEV. = 120'-0"

EXISTING MCL
ELEV. = 113'-0"

EXISTING MCL
ELEV. = 98'-0"

EXISTING MCL
ELEV. = 84'-0"

EXISTING MCL
ELEV. = 72'-0"

EXISTING T-MOBILE MCL
ELEV. = 51'-0"

(E) 120'-0" MONOPOLE

(E) T-MOBILE FEEDLINE
(1) HYBRID CABLE (1-4/5")

NEW T-MOBILE FEEDLINE
(1) NOKIA - HCS 2.0 TRUNK (1-4/5")
(150'-0" LONG)
(ROUTED PER STRUCTURAL ANALYSIS)

EXISTING T-MOBILE MCL
ELEV. = 10'-0"

1 FINAL ELEVATION
SCALE: NOT TO SCALE

EQUIPMENT LEGEND:

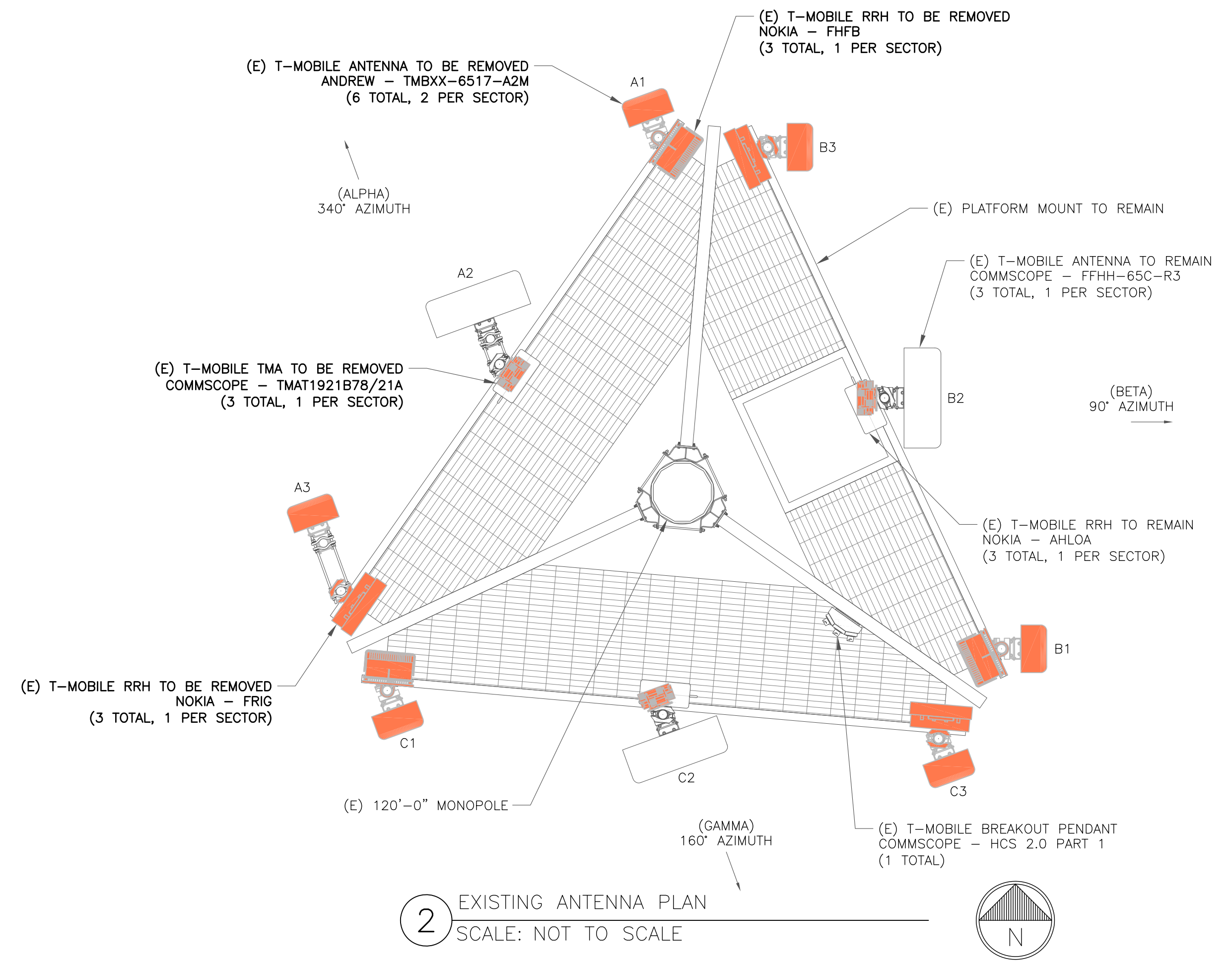
- EXISTING
- TO BE RELOCATED/REMOVED
- NEW

MOUNT ANALYSIS NOTES:

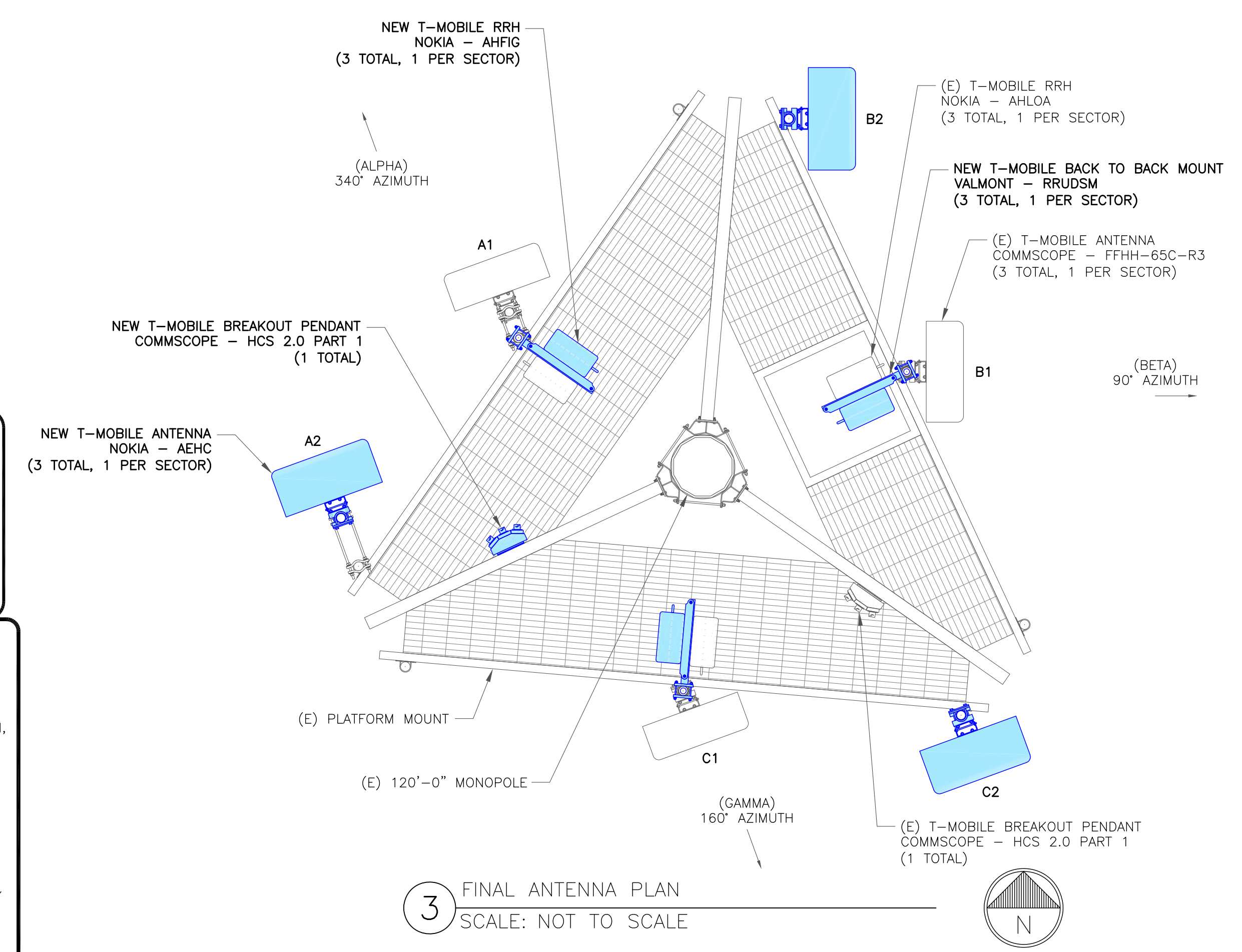
1. THE DESIGN DEPICTED IN THESE DRAWINGS IS VALID WHEN ACCOMPANIED BY A CORRESPONDING PASSING MOUNT ANALYSIS.
2. CONSTRUCTION MANAGER / GENERAL CONTRACTOR SHALL REVIEW THE MOUNT ANALYSIS FOR ANY CONDITIONS PRIOR TO INSTALLATION.
3. ANY REQUIRED MOUNT MODIFICATION DESIGN OR MOUNT REPLACEMENT SHALL BE APPROVED BY EOR.

"LOOK UP" - CROWN CASTLE USA INC. SAFETY CLIMB REQUIREMENT:

THE INTEGRITY OF THE SAFETY CLIMB AND ALL COMPONENTS OF THE CLIMBING FACILITY SHALL BE CONSIDERED DURING ALL STAGES OF DESIGN, INSTALLATION, AND INSPECTION. TOWER MODIFICATION, MOUNT REINFORCEMENTS, AND/OR EQUIPMENT INSTALLATIONS SHALL NOT COMPROMISE THE INTEGRITY OR FUNCTIONAL USE OF THE SAFETY CLIMB OR ANY COMPONENTS OF THE CLIMBING FACILITY ON THE STRUCTURE. THIS SHALL INCLUDE, BUT NOT BE LIMITED TO: PINCHING OF THE WIRE ROPE, BENDING OF THE WIRE ROPE FROM ITS SUPPORTS, DIRECT CONTACT OR CLOSE PROXIMITY TO THE WIRE ROPE WHICH MAY CAUSE FRICTIONAL WEAR, IMPACT TO THE ANCHORAGE POINTS IN ANY WAY, OR TO IMPEDE/BLOCK ITS INTENDED USE. ANY COMPROMISED SAFETY CLIMB, INCLUDING EXISTING CONDITIONS MUST BE TAGGED OUT AND REPORTED TO YOUR CROWN CASTLE USA INC. POC OR CALL THE NOC TO GENERATE A SAFETY CLIMB MAINTENANCE AND CONTRACTOR NOTICE TICKET.



2 EXISTING ANTENNA PLAN
SCALE: NOT TO SCALE



3 FINAL ANTENNA PLAN
SCALE: NOT TO SCALE

T-Mobile

2323 DELGANY STREET
DENVER, CO 80216

CROWN CASTLE

2055 S. STEARMAN DRIVE
CHANDLER, AZ 85286

T-MOBILE SITE NUMBER:
DN01088A

BU #: 825931
MEISMAN

7375 SOUTHMOOR DR
FOUNTAIN, CO 80817

EXISTING 120'-0" MONOPOLE

ISSUED FOR:

REV	DATE	DRWN	DESCRIPTION	DES./QA
0	06/11/20	AE	CONSTRUCTION	RO/DG

6/11/2020

PROFESSIONAL ENGINEER

IT IS A VIOLATION OF LAW FOR ANY PERSON, UNLESS THEY ARE ACTING UNDER THE DIRECTION OF A LICENSED PROFESSIONAL ENGINEER, TO ALTER THIS DOCUMENT.

SHEET NUMBER: **C-2** REVISION: **0**