

AVANCE 3:43:03 PM pw:\WPAPPD\MA01\NorthCentral\_Dmaha\Documents\200716\0000000000260510\6.0\_CAD\_BITMAP\6.2\_Work\_In\_Progress\Design\Drawings\Monument Academy\School Site Grading-01 Back Access

LEGEND:

- FLOW DIRECTION
- NATIVE GRASS SEED MIX
- WETLANDS
- NATIVE GRASS SEED MIX

NOTES:

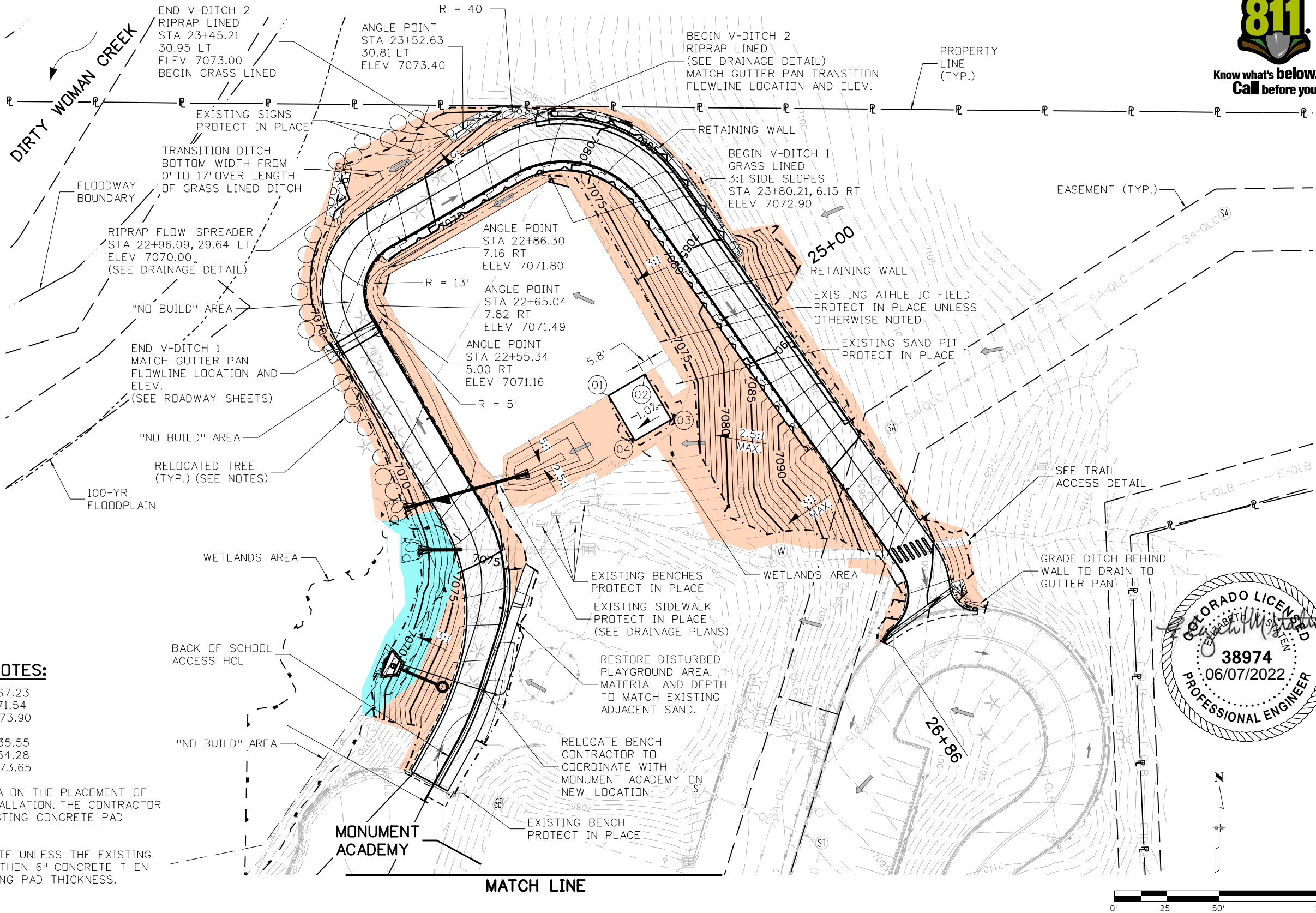
- SEE ROADWAY AND DRAINAGE NOTES, DETAILS, PLANS, AND PROFILES FOR ADDITIONAL INFORMATION.
- SLOPE GRADING SHALL NOT BE STEEPER THAN 3H:1V UNLESS OTHERWISE NOTED.
- SEE SWMP AND EROSION CONTROL NOTES AND PLANS FOR SEED MIXES, SLOPE PROTECTION, AND ADDITIONAL INFORMATION.
- DESIGNATED "NO BUILD" AREA IS ENVIRONMENTALLY SENSITIVE AND MAY BE HABITAT FOR ENDANGERED SPECIES. SEE PROJECT SPECIFICATIONS FOR ADDITIONAL INFORMATION.
- CONTRACTOR SHALL PROTECT OR RELOCATE TREES WITHIN DISTURBED AREA TO THE GENERAL AREA SHOWN. REPLANT TREES IN GROUPINGS OF 3 TO 4 TREES, AVOIDING STRAIGHT LINES AND AVOIDING EQUAL SPACING.

20'X25' POLE VAULT PAD NOTES:

- |    |   |    |   |
|----|---|----|---|
| 01 | N: 1460557.14<br>E: 3186841.66<br>ELEV: 7073.73 | 03 | N: 1460567.23<br>E: 3186871.54<br>ELEV: 7073.90 |
| 02 | N: 1460567.23<br>E: 3186858.93<br>ELEV: 7073.90 | 04 | N: 1460535.55<br>E: 3186854.28<br>ELEV: 7073.65 |

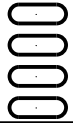
CONTRACTOR TO COORDINATE WITH MA ON THE PLACEMENT OF THE POLE VAULT PAD PRIOR TO INSTALLATION. THE CONTRACTOR DOCUMENT AND WILL MATCH THE EXISTING CONCRETE PAD DIMENSIONS AND APPURTENANCES.

POLE VAULT PAD WILL BE 6" CONCRETE UNLESS THE EXISTING PAD IS DETERMINED TO BE GREATER THEN 6" CONCRETE THEN CONTRACTOR WILL MATCH THE EXISTING PAD THICKNESS.



Print Date: 6/7/2022  
File Name: SchoolSite Grading-01 Back Access  
Horiz. Scale: 1:50 Vert. Scale: None

**HR** 5555 TECH CENTER DRIVE, SUITE 310  
COLORADO SPRINGS, CO 80919 PHONE: 719-272-8800



Sheet Revisions		
Date:	Comments	Init.

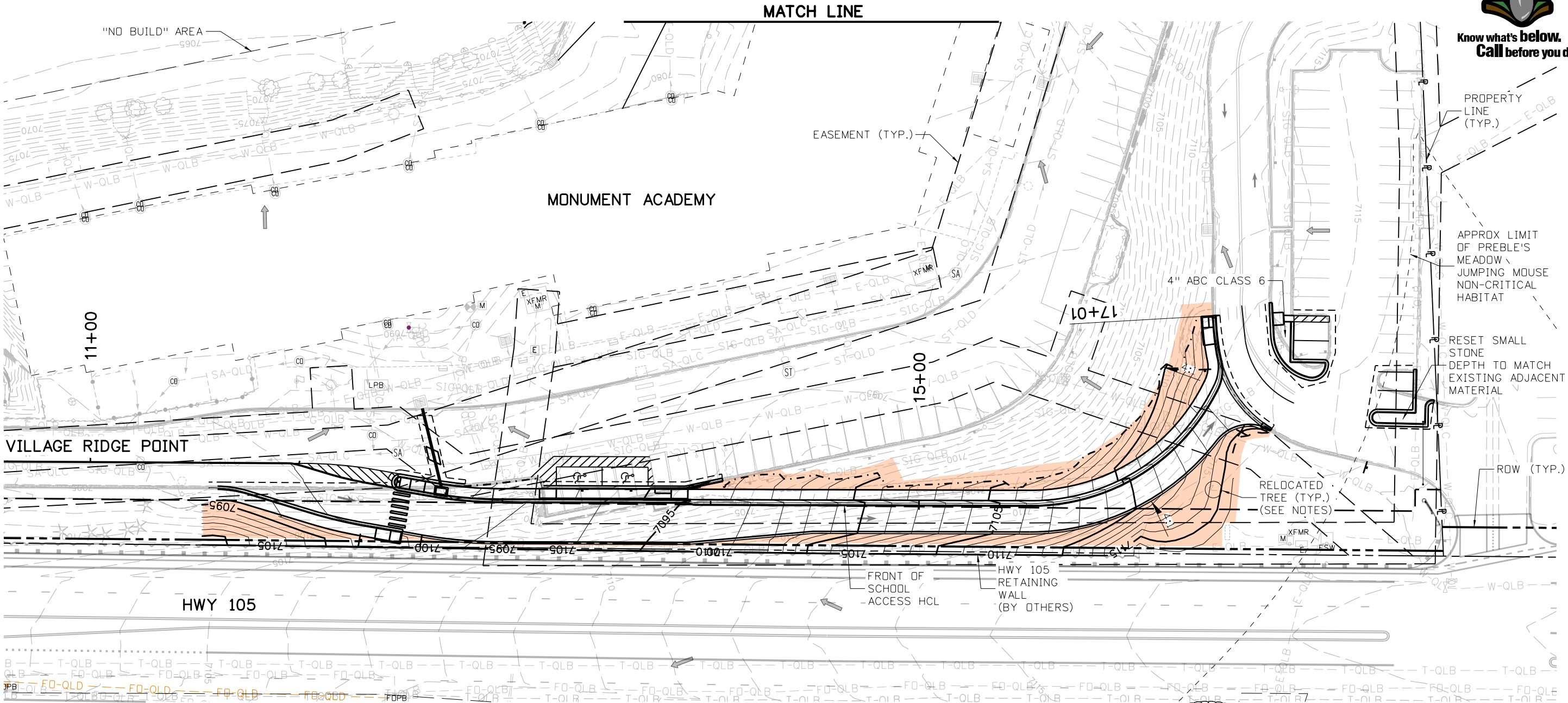


As Constructed		MONUMENT ACADEMY SITE AND GRADING PLAN BACK OF SCHOOL ACCESS ROAD		Project No./Code
No Revisions:		Designer: A,VANCE	Structure Numbers	19734
Revised:		Detailer: A,VANCE		STA 105A-014
Void:		Sheet Subset: SITE	Subset Sheets: 1 of 2	Sheet Number

AVANCE 3:43:06 PM p:\p\WPAPDMA001\NorthCentral\_Dmaha\Documents\200716\000000000260510\6\_0\_CAD\_BTM\6.2\_Work\_In\_Progress\Design\Drawings\Monument Academy\School Site Grading-02 Front Access.dgn



Know what's below.  
Call before you dig.



**LEGEND:**

- FLOW DIRECTION
- NATIVE GRASS SEED MIX

**NOTES:**

- SEE ROADWAY AND DRAINAGE NOTES, DETAILS, PLANS, AND PROFILES FOR ADDITIONAL INFORMATION.
- SLOPE GRADING SHALL NOT BE STEEPER THAN 3H:1V UNLESS OTHERWISE NOTED.
- SEE SWMP AND EROSION CONTROL NOTES AND PLANS FOR SEED MIXES, SLOPE PROTECTION, AND ADDITIONAL INFORMATION.
- DESIGNATED "NO BUILD" AREA IS ENVIRONMENTALLY SENSITIVE AND MAY BE HABITAT FOR ENDANGERED SPECIES. SEE PROJECT SPECIFICATIONS FOR ADDITIONAL INFORMATION.
- CONTRACTOR SHALL PROTECT OR RELOCATE TREES WITHIN DISTURBED AREA TO THE GENERAL AREA SHOWN. REPLANT TREES IN GROUPINGS OF 3 TO 4 TREES, AVOIDING STRAIGHT LINES AND AVOIDING EQUAL SPACING.



Print Date: 6/7/2022
File Name: SchoolSite Grading-02 Front Access.dgn
Horiz. Scale: 1:50      Vert. Scale: None
<b>HDR</b> 5555 TECH CENTER DRIVE, SUITE 310 COLORADO SPRINGS, CO 80919    PHONE: 719-272-8800

Sheet Revisions			
Date:	Comments	Init.	

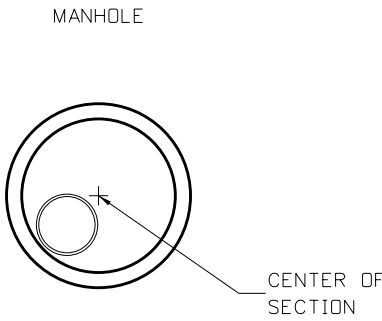
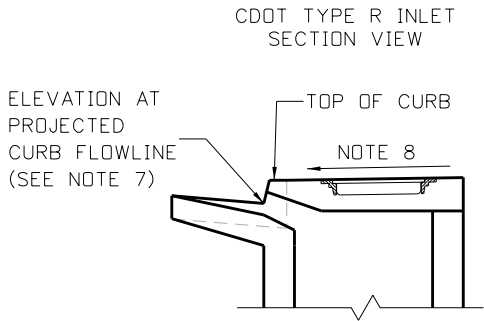
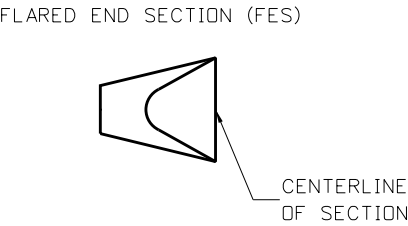
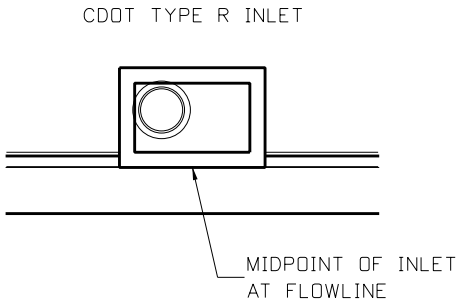


As Constructed		MONUMENT ACADEMY SITE AND GRADING PLAN FRONT OF SCHOOL ACCESS ROAD			Project No./Code
No Revisions:		Designer: A.VANCE	Structure		19734
Revised:		Detailer: A.VANCE	Numbers		STA 105A-014
Void:		Sheet Subset: SITE	Subset Sheets: 2 of 2		Sheet Number



GENERAL NOTES:

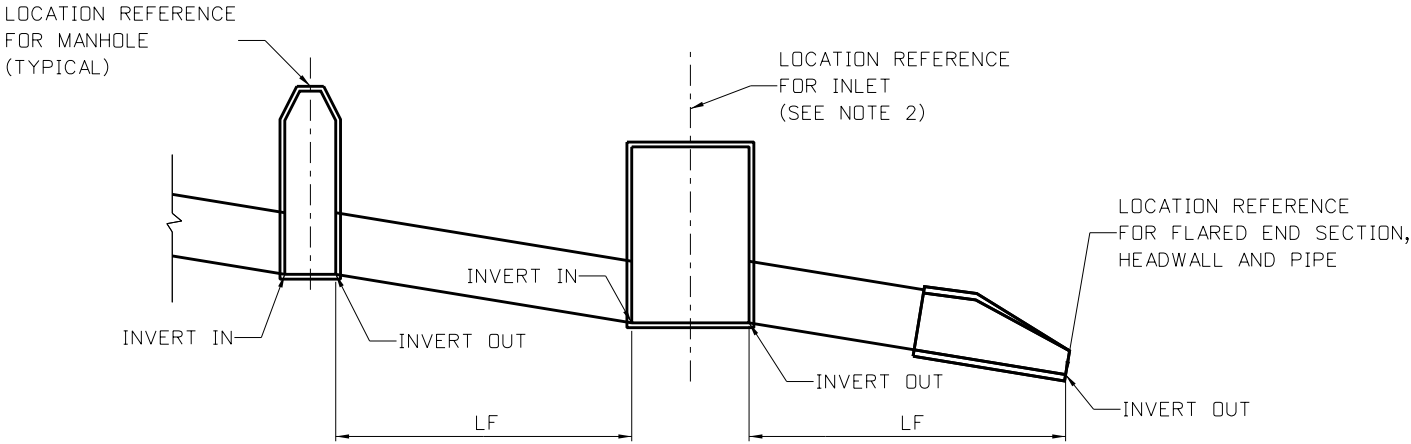
1. USE CDOT 2019 M&S STANDARDS & DETAILS WHERE APPROPRIATE.
2. DRAINAGE STRUCTURE REFERENCE POINTS:



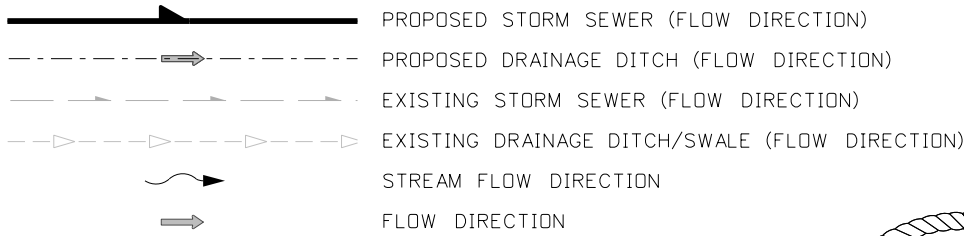
3. DISCREPANCIES FOUND BETWEEN THE PROJECT PLANS AND THE FIELD CONDITIONS SHALL BE BROUGHT TO THE ATTENTION OF THE PROJECT ENGINEER.
4. THE CONTRACTOR SHALL DETERMINE THE TYPE AND LOCATION OF THE UNDERGROUND UTILITIES AS MAY BE NECESSARY TO AVOID DAMAGE THERETO.
5. ADJUST MANHOLE RING AND COVERS TO MEET THE FINAL GRADE OF THE FINAL ROADWAY PER CDOT STANDARD M-604-20.
6. ALL REINFORCED CONCRETE PIPES TO BE CLASS 3 RCP UNLESS OTHERWISE NOTED IN THE PLANS.
7. HEIGHT OF TYPE R INLET IS FROM PROJECTED CURB FLOWLINE TO INVERT OUT. PROJECTED CURB FLOWLINE ELEVATION IS 6-INCHES LOWER THAN TOP OF CURB ELEVATION.
8. WHEN LOCATED IN A SIDEWALK, THE TOP SURFACE OF A TYPE R INLET SHALL MEET AND COMPLY WITH ALL ADA ACCESSIBILITY GUIDELINES FOR THE ROUTE INCLUDING BUT NOT LIMITED TO MAXIMUM SLOPE, NON-SLIP MANHOLE COVERS, AND CHANGES IN LEVEL.

DEFINITION OF PIPE LENGTH AND HORIZONTAL REFERENCE POINT

LF = LINEAR FEET



LEGEND:



Print Date: 6/7/2022

File Name: SchoolAccess HYDR\_01.dgn

Horiz. Scale: None Vert. Scale: None

**HDR** 5555 TECH CENTER DRIVE, SUITE 310  
COLORADO SPRINGS, CO 80919 PHONE: 719-272-8800

Sheet Revisions		
Date:	Comments	Init.



As Constructed		MONUMENT ACADEMY DRAINAGE GENERAL NOTES		Project No./Code
No Revisions:				19734
Revised:		Designer: A.VANCE	Structure Numbers	STA 105A-014
Void:		Detailer: A.VANCE		
		Sheet Subset: DRNG	Subset Sheets: 1 of 11	Sheet Number

AVANCE 3:43:12 PM pw:\PWAPPDMA001\NorthCentral\_Dmaha\Documents\200716\_00000000026051\0\_6\_0\_CAD\_BIM\6.2\_Work\_In\_Progress\Hydraulics\Drawings Monument Academy\School Access HYDR\_02.dgn

TABULATION OF DRAINAGE STRUCTURES																
DESCRIPTION OR STATION	UPSTREAM STRUCTURE ID	PIPE ID	202-00037	420-00133	506-00209	506-00212	506-00409	601-01025	REINFORCED CONCRETE PIPE (COMPLETE IN PLACE)		603-05018	604-19105	604-30010	605-00060	616-30018	REMARKS
			REMOVAL OF END SECTION	GEOTEXTILE (SEPARATOR) (CLASS 2)	RIPRAP (9 INCH)	RIPRAP (12 INCH)	SOIL RIPRAP (9 INCH)	CONCRETE CLASS B (MISCELLANEOUS)	603-01185 (18 INCH)	603-01245 (24 INCH)	18 INCH REINFORCED CONCRET	INLET TYPE R L5 (5 FT)	MANHOLE SLAB BASE (10 FT)	6 INCH PERFORATED PIPE UNDERDRAIN	18 INCH TRASH GUARD	
			EACH	SY	CY	CY	CY	CY	LF	LF	EA	EACH	EACH	LF	EACH	
LINE 102	MH-102	P-102	1	6			3	6		21			1			CONNECT TO EXISTING PIPE
PIPE UNDERDRAIN	UD-C-1	ALL UD PIPE												79		SEE DETAIL
LINE 104	EXIST PIPE	P-104	1	7			3		21		1					CONNECT TO EXISTING PIPE
LINE 108	FES 108-IN	P-108		7	3				61		2				1	
RIPRAP V-DITCH 2	STA 23+79 LT	N/A		33		22										RIPRAP LINED DITCH SEE DETAIL
RIPRAP FLOW SPRDR.	V-DITCH 2	N/A		31	13									0		SEE DETAIL
RIPRAP PAD	STA 22+50 LT	N/A		6	3											RIPRAP PAD AFTER GUTTER PAN
RIPRAP PAD	STA 26+58 LT	N/A		4	2											RIPRAP PAD BEFORE GUTTER PAN
BACK OF SCHOOL SUBTOTALS			2	94	21	22	6	6	82	21	3	0	1	79	1	
LINE 100	IN-100	P-101						3	39			1				CONNECT TO EXISTING INLET
FRONT OF SCHOOL SUBTOTALS			0	0	0	0	0	3	39	0	0	1	0	0	0	
PROJECT TOTALS			2	94	21	22	6	9	121	21	3	1	1	79	1	



Print Date: 6/7/2022	0000	Sheet Revisions				As Constructed		MONUMENT ACADEMY DRAINAGE TABULATIONS			Project No./Code	
File Name: School Access HYDR_02.dgn		Date:	Comments	Init.		No Revisions:					19734	
Horiz. Scale: None Vert. Scale: None						Revised:		Designer: A.VANCE	Structure Numbers		STA 105A-014	
						Void:		Detailer: A.VANCE			Sheet Number	
 5555 TECH CENTER DRIVE, SUITE 310 COLORADO SPRINGS, CO 80919 PHONE: 719-272-8800								Sheet Subset: DRNG	Subset Sheets: 2 of 11			

Diagram illustrating the cross-section of a proposed drainage structure, showing the following components and dimensions:

- PROPOSED GRADE
- PIPE
- FES
- 2 x D50
- RIPRAP D50=9" (UNLESS OTHERWISE NOTED ON PLANS)
- EXISTING GROUND
- BEDDING MATERIAL
- GEOTEXTILE (CLASS 2) (SEPARATOR)
- Dimensions: F MIN. and 4D
- UNLESS OTHERWISE NOTED ON PLANS

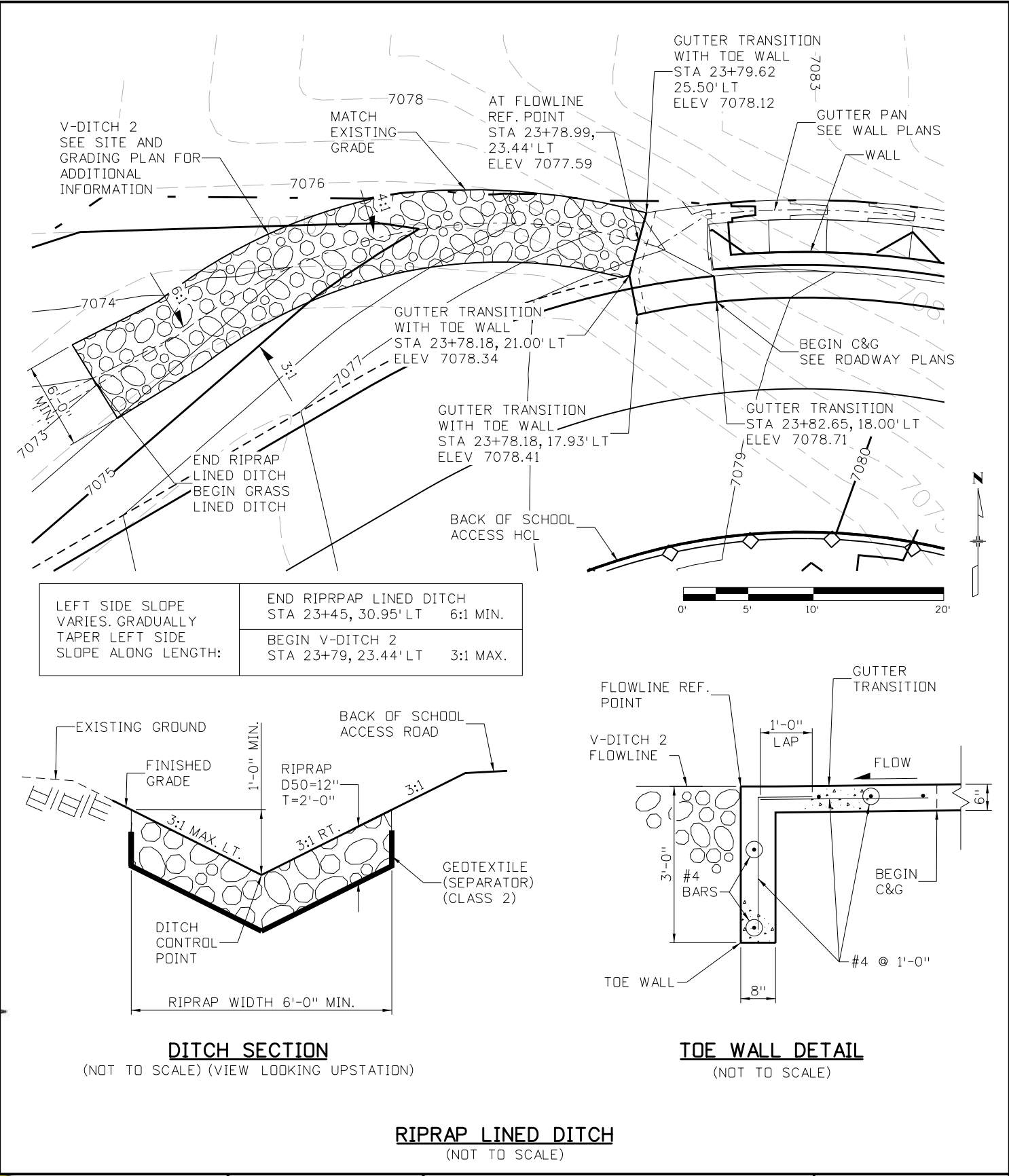
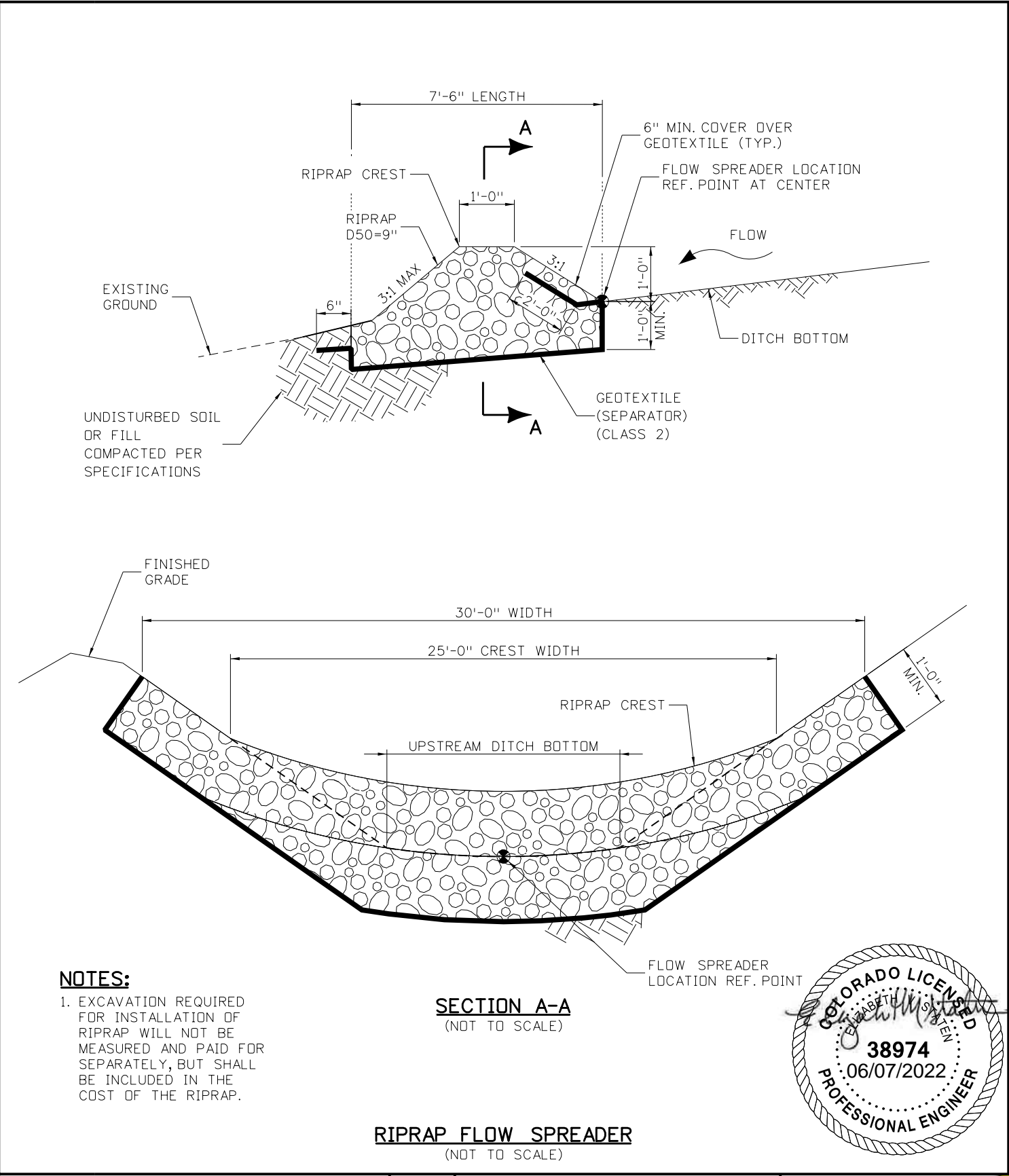
- 
- PROPOSED GRADE
- 2 x D50
- SOIL RIPRAP D50=9"
- EXISTING GROUND
- GEOTEXTILE (SEPARATOR) (CLASS 2)

A circular professional engineer seal for Elizabeth S. Smith. The outer ring contains the text "COLORADO LICENSED" at the top and "PROFESSIONAL ENGINEER" at the bottom, separated by dots. The inner circle contains the name "ELIZABETH S. SMITH" at the top, the license number "38974" in the center, and the expiration date "06/07/2022" at the bottom. A signature is written across the seal.



Print Date: 6/7/2022		<div>00000</div>	Sheet Revisions				As Constructed		MONUMENT ACADEMY DRAINAGE DETAILS			Project No./Code		
File Name: SchoolAccess HYDR_03 Det.dgn			Date:	Comments	Init.		No Revisions:					19734		
Horiz. Scale: None      Vert. Scale: None							Revised:		Designer:	A.VANCE	Structure		STA 105A-014	
							Void:		Detailer:	A.VANCE	Numbers			
 5555 TECH CENTER DRIVE, SUITE 310 COLORADO SPRINGS, CO 80919    PHONE: 719-272-8800									Sheet Subset:	DRNG	Subset Sheets:	3 of 11	Sheet Number	

AVANCE 3:43:17 PM pw:\p\WPAPDMA001\NorthCentral\_Dmaha\Documents\200716\_0000000000260510\_6\_0\_CAD\_BIM\6.2\_Work\_In\_Progress\Hydraulics\Drawings\Monument Academy School Access HYDR\_03A Det.dgn



Print Date: 6/7/2022
File Name: SchoolAccess HYDR_03A Det.dgn
Horiz. Scale: As Noted      Vert. Scale: None
<b>HR</b> 5555 TECH CENTER DRIVE, SUITE 310 COLORADO SPRINGS, CO 80919    PHONE: 719-272-8800

Sheet Revisions			
Date:	Comments	Init.	



As Constructed
No Revisions:
Revised:
Void:

MONUMENT ACADEMY DRAINAGE DETAILS			
Designer:	A.VANCE	Structure Numbers	
Detailer:	A.VANCE		
Sheet Subset:	DRNG	Subset Sheets:	4 of 11

Project No./Code
19734
STA 105A-014
Sheet Number

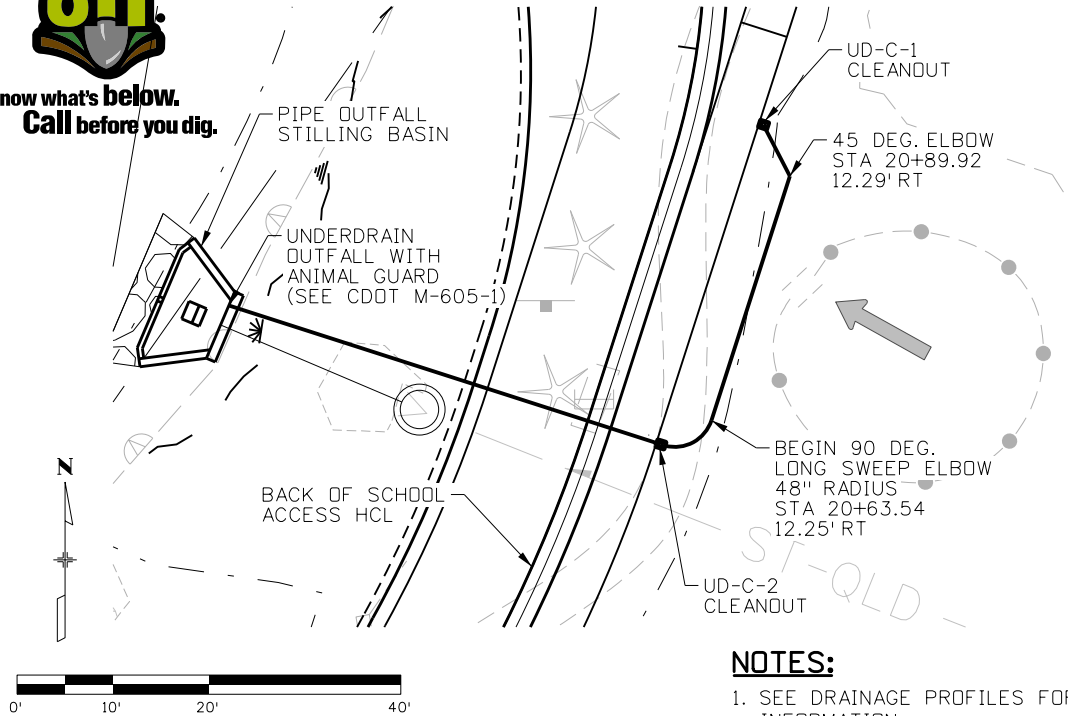


Sheet Number

AVANCE 3:43:25 PM pw:\\P\\WAPPD\\MA001\\NorthCentral\\Dmaha\\Documents\\200716\\000000000260510\\6.0\_CAD\_BTM\\6.2\_Work\_In\_Progress\\Hydraulics\\Drawings\\Monument Academy\\School Access HYDR\_05 Det.dgn



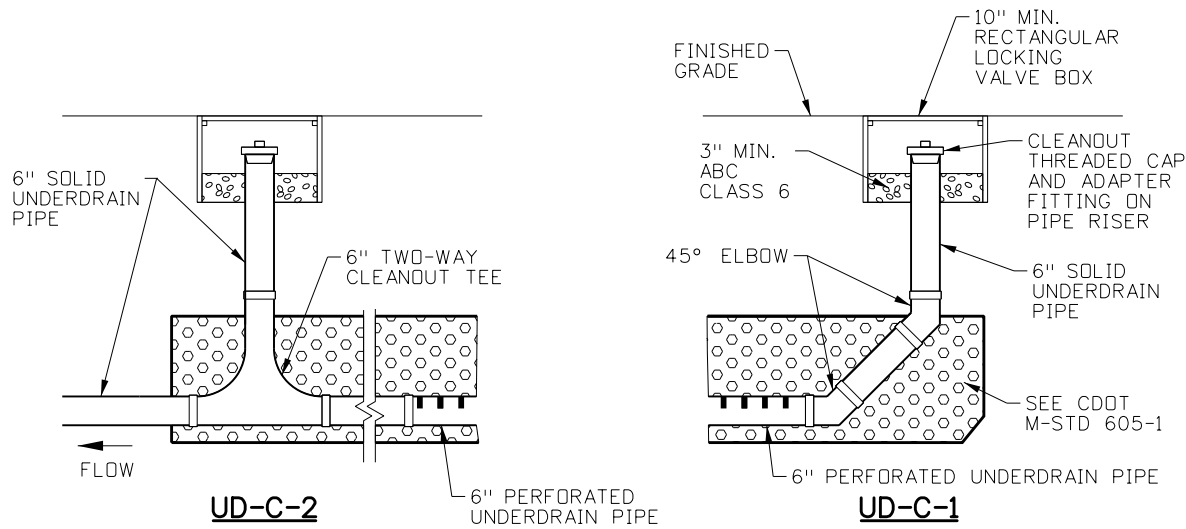
Know what's below.  
Call before you dig.



PLAN VIEW

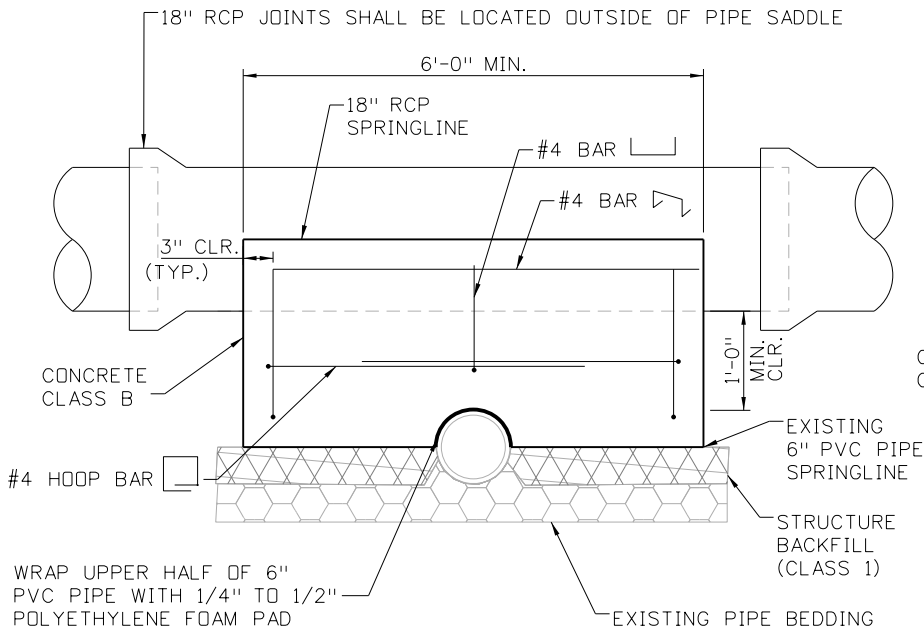
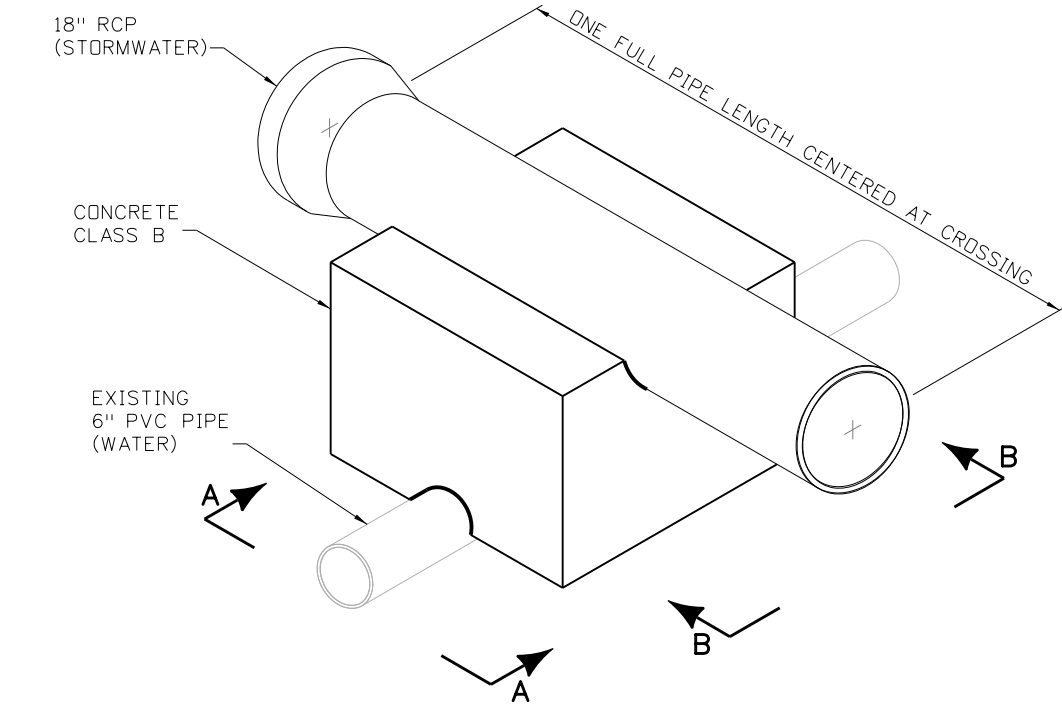
NOTES:

1. SEE DRAINAGE PROFILES FOR ADDITIONAL INFORMATION.
2. UNDERDRAIN CLEANOUTS, INCLUDING ALL APPURTENANCES AND INSTALLATION, SHALL BE INCLUDED WITH COST OF THE PIPE UNDERDRAIN.

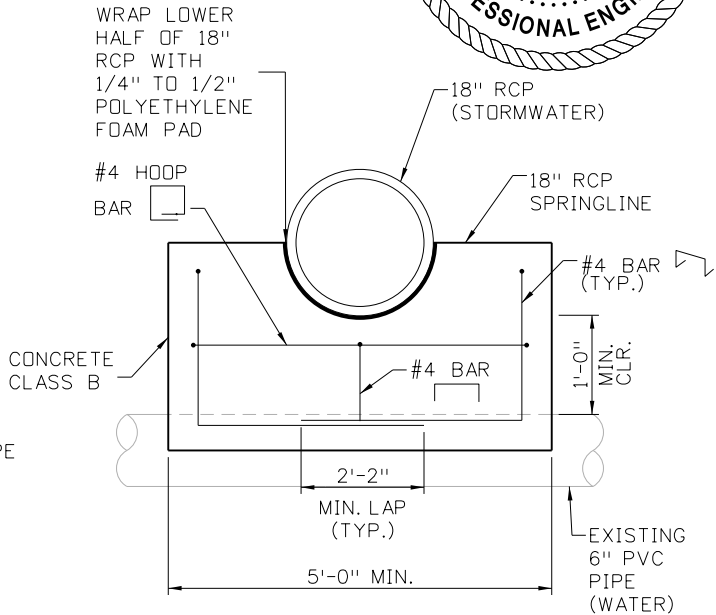


UNDERDRAIN CLEANOUT DETAILS  
NTS

PIPE UNDERDRAIN



SECTION A-A



SECTION B-B

PIPE SADDLE DETAIL  
NTS

NOTES:

1. PIPE SADDLE LOCATION SHOWN ON DRAINAGE PROFILE SHEETS.
2. PIPE SADDLE DETAIL IS ONLY APPLICABLE FOR PROPOSED STORMWATER PIPE AND EXISTING WATER PIPE AS SHOWN.
3. CONSTRUCTION SHALL CONFORM TO CDOT STANDARD SPECIFICATIONS FOR ROAD AND BRIDGE CONSTRUCTION, AND APPLICABLE CDOT M&S STANDARDS.
3. PIPE SADDLE INCLUDING ALL CONCRETE, REBAR, FOAM PADS, EXCAVATION, BACKFILL, AND INSTALLATION SHALL BE PAID FOR UNDER 601-01025 CONCRETE CLASS B (MISCELLANEOUS).



Print Date: 6/7/2022  
File Name: School Access HYDR\_05 Det.dgn  
Horiz. Scale: 1:20 Vert. Scale: None

**HR** 5555 TECH CENTER DRIVE, SUITE 310  
COLORADO SPRINGS, CO 80919 PHONE: 719-272-8800



Sheet Revisions

Date:	Comments	Init.



As Constructed

No Revisions:

Revised:

Void:

MONUMENT ACADEMY  
DRAINAGE DETAILS

Designer: A.VANCE

Detailer: A.VANCE

Sheet Subset: DRNG

Structure Numbers

Subset Sheets: 6 of 11

Project No./Code

19734

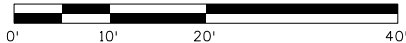
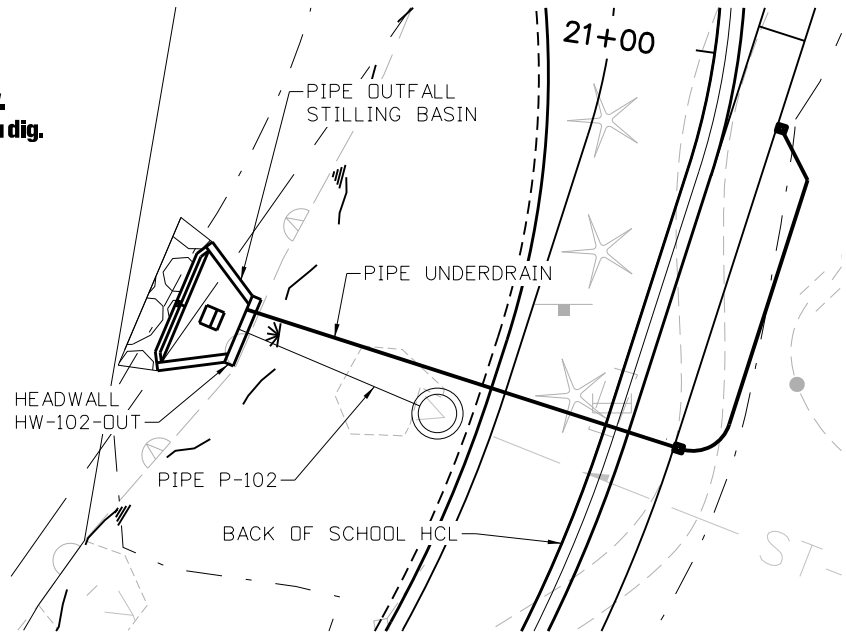
STA 105A-014

Sheet Number

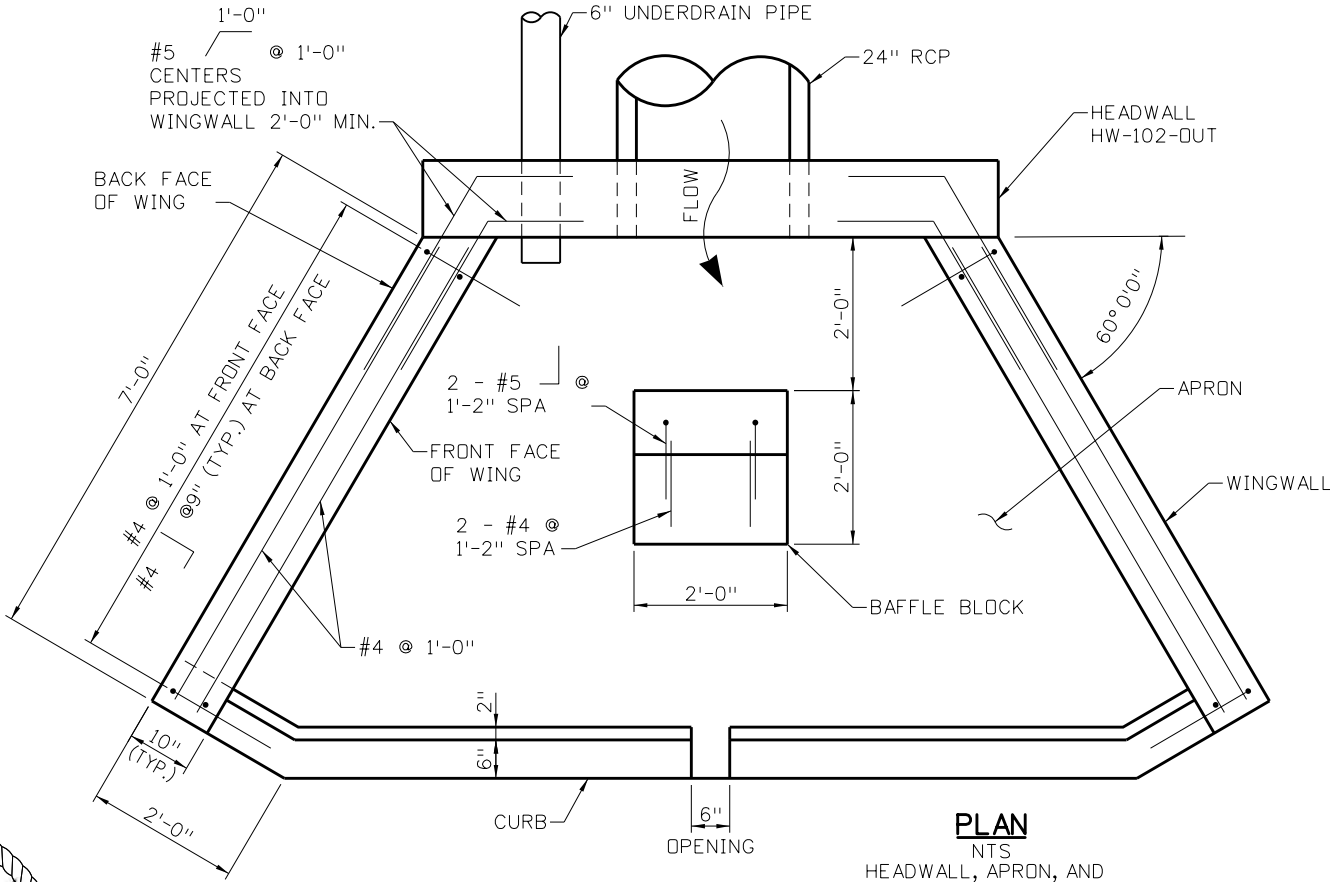




Know what's below.  
Call before you dig.

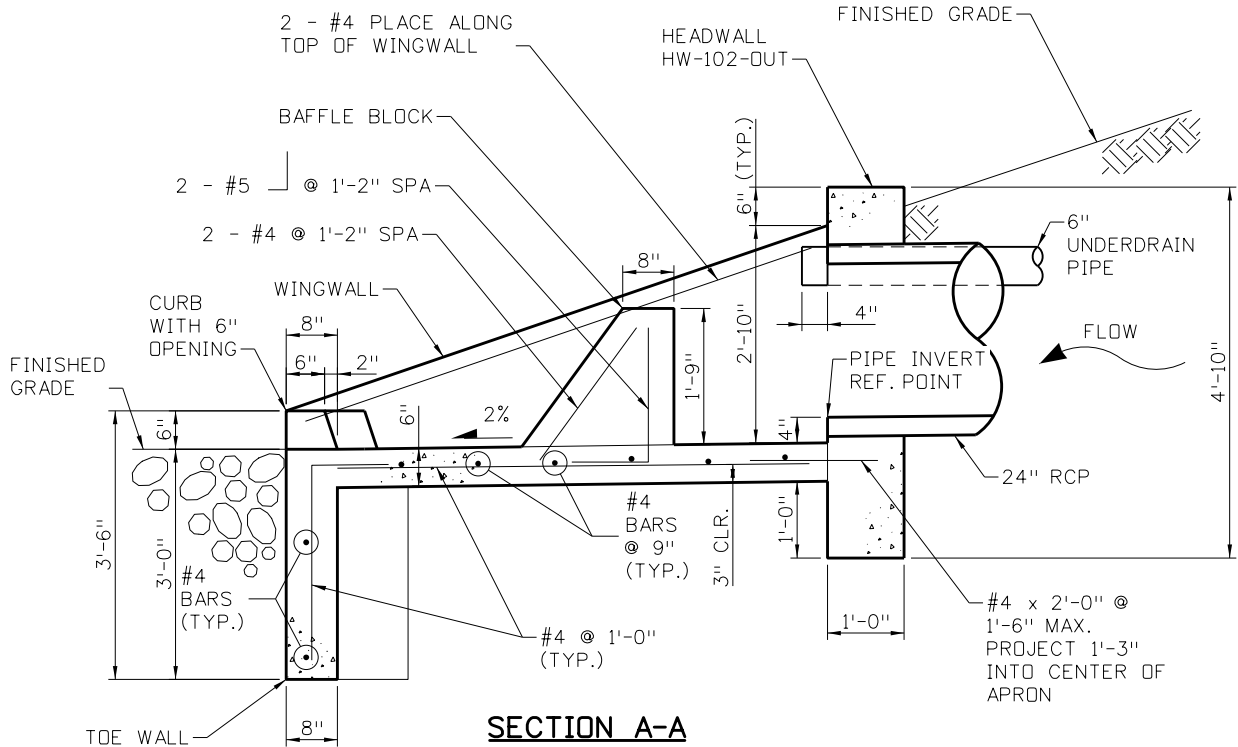


- NOTES:**
1. CONCRETE SHALL BE CLASS B.
  2. HEADWALL SHALL HAVE REINFORCING STEEL INSTALLED IN A PATTERN PER CDOT STANDARD PLAN M-601-10.
  3. EXPOSED CONCRETE CORNERS SHALL BE CHAMFERED 3/4-INCH.
  4. ALL REINFORCING BARS SHALL HAVE A 2-INCH MINIMUM CLEARANCE UNLESS NOTED OTHERWISE.
  5. PIPE OUTFALL STILLING BASIN SHALL BE PAID FOR AS CONCRETE CLASS B (MISCELLANEOUS). THE COST OF REINFORCING STEEL SHALL BE INCLUDED IN THE WORK AND SHALL NOT BE PAID FOR SEPARATELY.



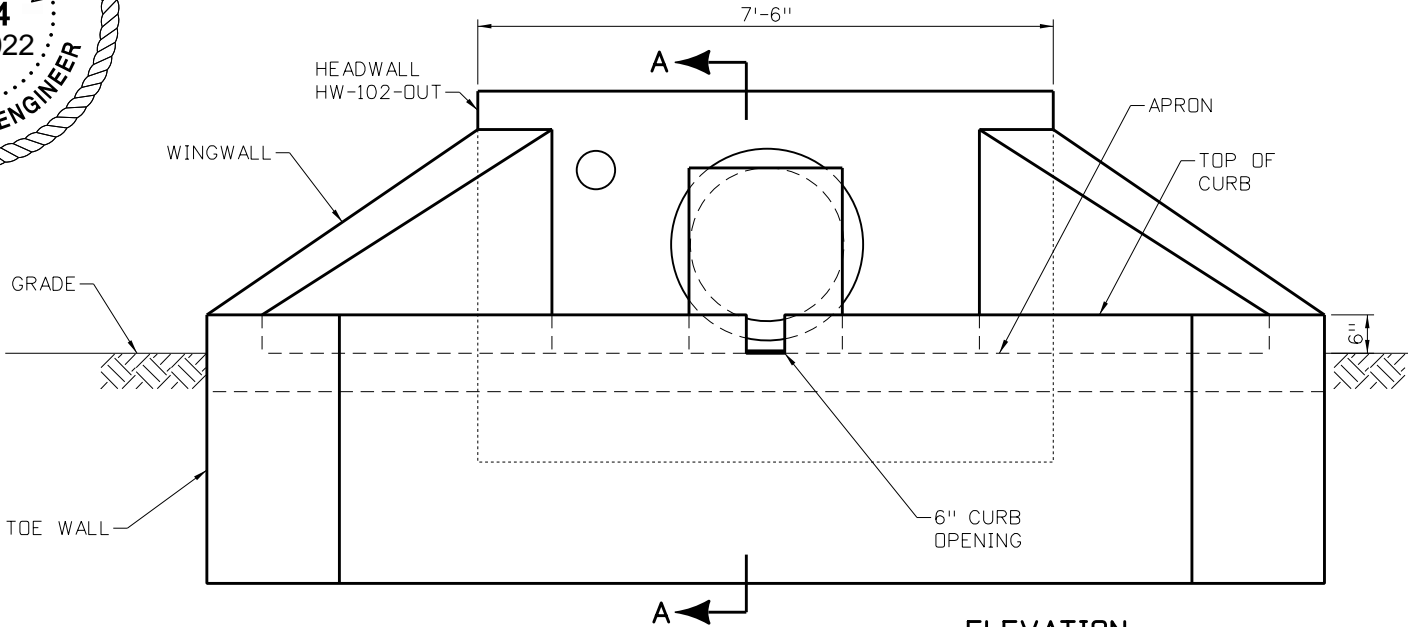
**PLAN**

NTS  
HEADWALL, APRON, AND CURB REINFORCING NOT SHOWN FOR CLARITY



**SECTION A-A**

NTS  
SEE PLAN VIEW FOR ADDITIONAL REINFORCING NOT SHOWN



**ELEVATION**

NTS  
REINFORCING NOT SHOWN FOR CLARITY

**PIPE OUTFALL STILLING BASIN**

Print Date: 6/7/2022
File Name: SchoolAccess HYDR_05A Det.dgn
Horiz. Scale: As Noted Vert. Scale: None
<b>HR</b> 5555 TECH CENTER DRIVE, SUITE 310 COLORADO SPRINGS, CO 80919 PHONE: 719-272-8800

Sheet Revisions			
Date:	Comments	Init.	



As Constructed		MONUMENT ACADEMY DRAINAGE DETAILS		Project No./Code
No Revisions:		Designer: A.VANCE	Structure Numbers	19734
Revised:		Detailer: A.VANCE		STA 105A-014
Void:		Sheet Subset: DRNG	Subset Sheets: 7 of 11	Sheet Number

AVANCE 3:43:31 PM pw:\PWP\PPOMA001\NorthCentral\_Dmha\Documents\200716\000000000260510\6.0\_CAD\_BIM\6.2\_Work\_In\_Progress\Hydraulics\Drawings\Monument Academy\School Access HYDR\_06 PnP.dgn

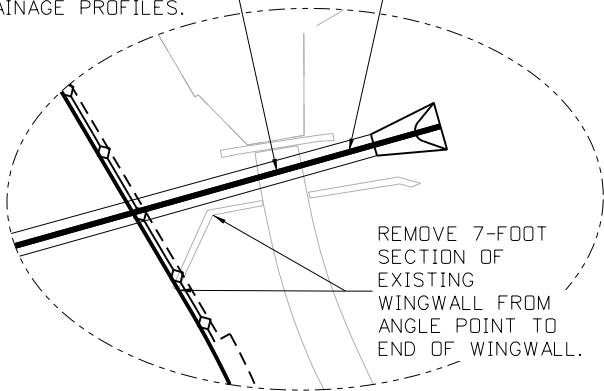
LEGEND:

→ FLOW DIRECTION

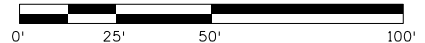
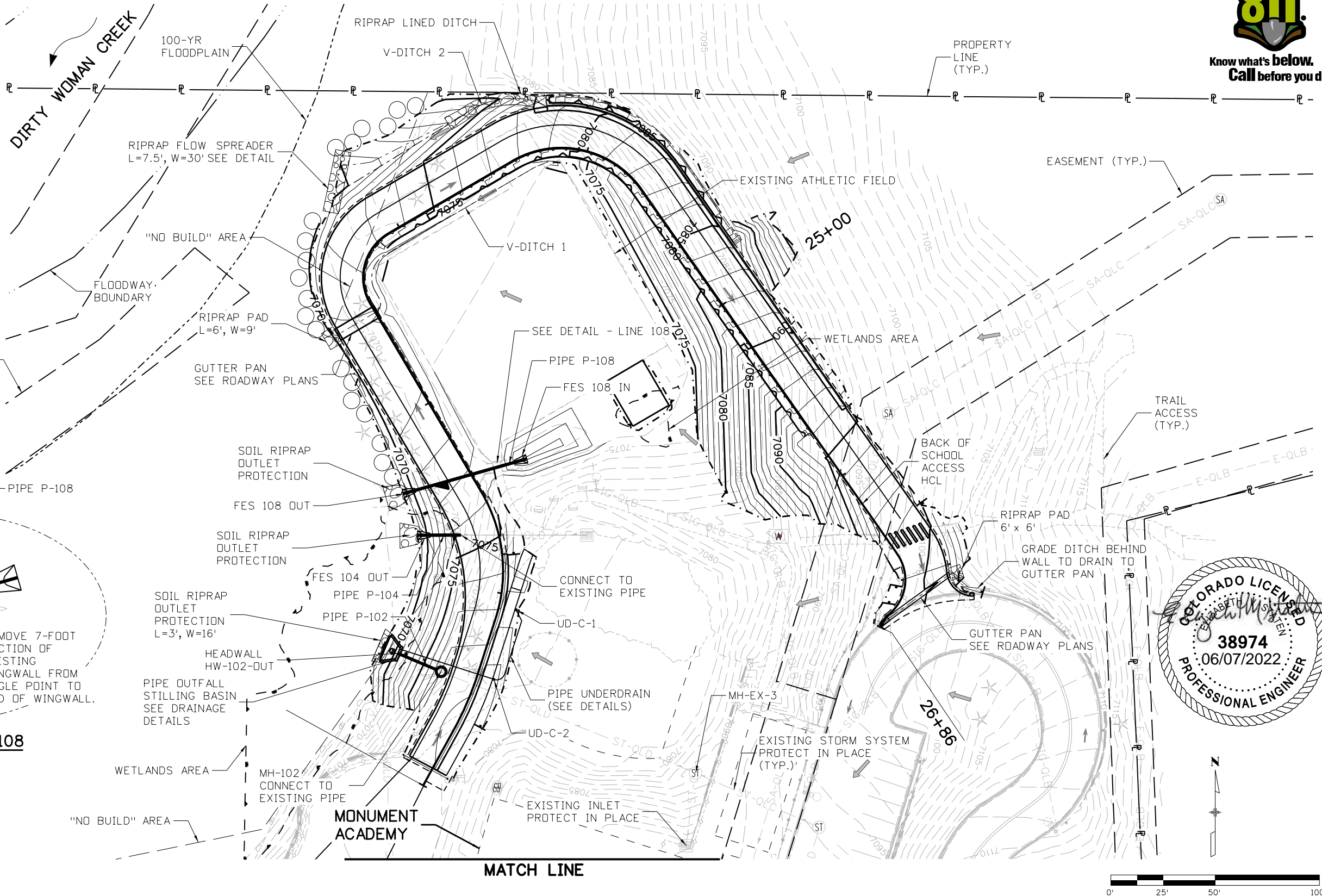
NOTES:

1. SEE DRAINAGE NOTES, DETAILS AND PROFILES FOR ADDITIONAL INFORMATION.
2. SEE SITE GRADING AND ROADWAY PLANS FOR ADDITIONAL DITCH INFORMATION.
3. ALL RIPRAP SHALL BE D50=9" WITH AN 18" MINIMUM THICKNESS UNLESS NOTED OTHERWISE.

PROPOSED PIPE P-108 IS DESIGNED TO FIT BETWEEN EXISTING WINGWALLS WITHOUT DISTURBING SIDEWALK. SEE DRAINAGE PROFILES.



DETAIL - LINE 108



Print Date: 6/7/2022  
File Name: School Access HYDR\_06 PnP.dgn  
Horiz. Scale: 1:50 Vert. Scale: None

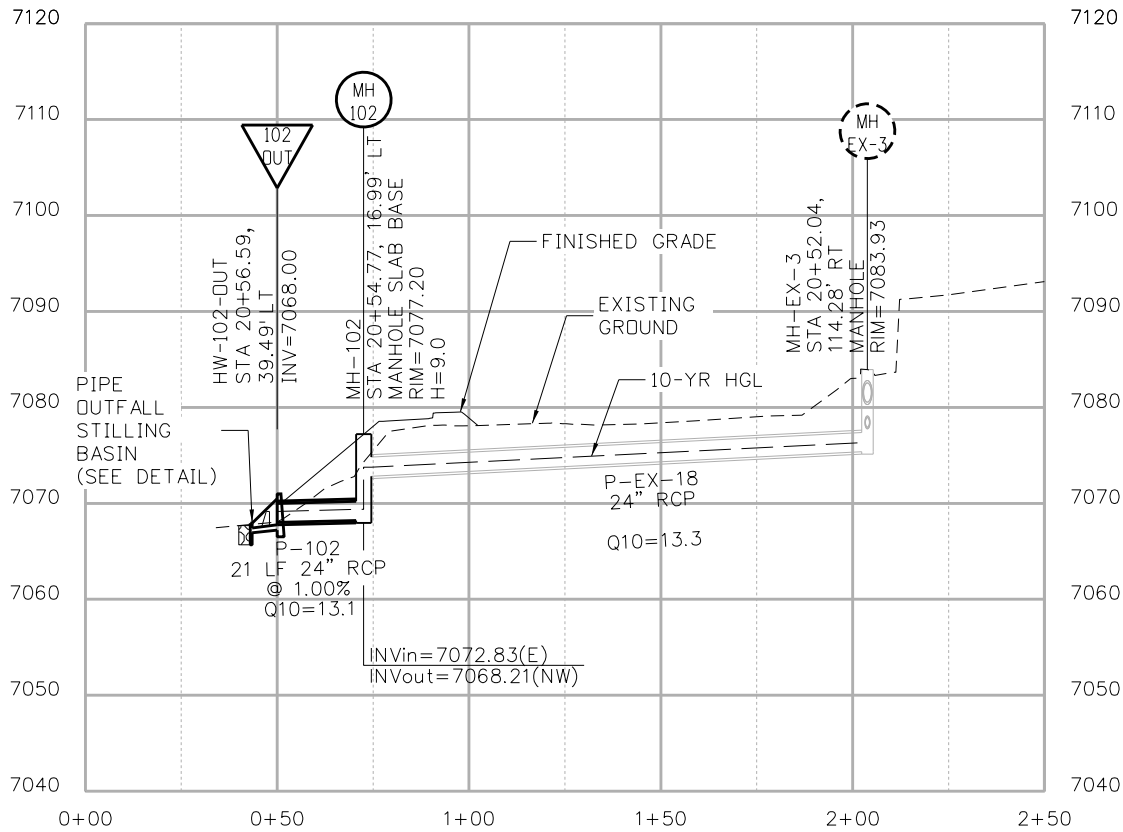
**HR** 5555 TECH CENTER DRIVE, SUITE 310  
COLORADO SPRINGS, CO 80919 PHONE: 719-272-8800

Sheet Revisions			
Date:	Comments	Init.	

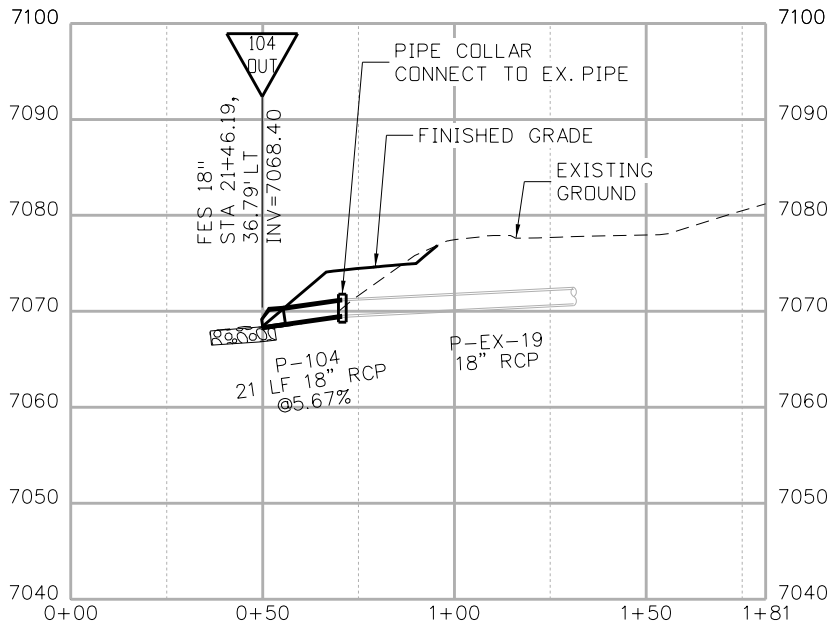


As Constructed		MONUMENT ACADEMY DRAINAGE PLAN BACK OF SCHOOL			Project No./Code	
No Revisions:		Designer:	A.VANCE	Structure	19734	
Revised:		Detailer:	A.VANCE	Numbers	STA 105A-014	
Void:		Sheet Subset:	DRNG	Subset Sheets:	8 of 11	Sheet Number

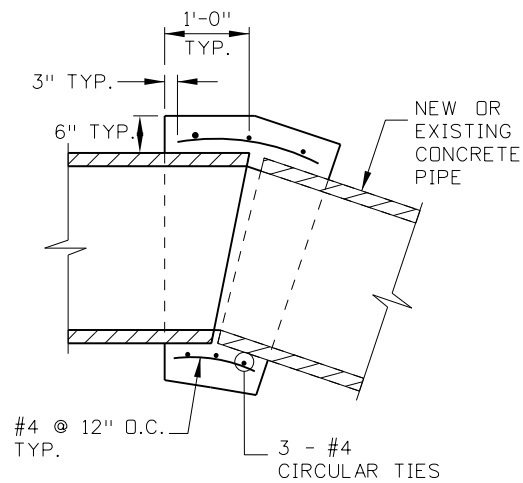
AVANCE 3:43:33 PM pw:\\P\\WAPPD\\MA001\\NorthCentral\\Dmaha\\Documents\\200716\\0000000000260510\\6.0\_CAD\_BTM\\6.2\_Work\_In\_Progress\\Hydraulics\\Drawings\\Monument Academy\\School Access HYDR\_07 PnP.dgn



LINE 102



LINE 104

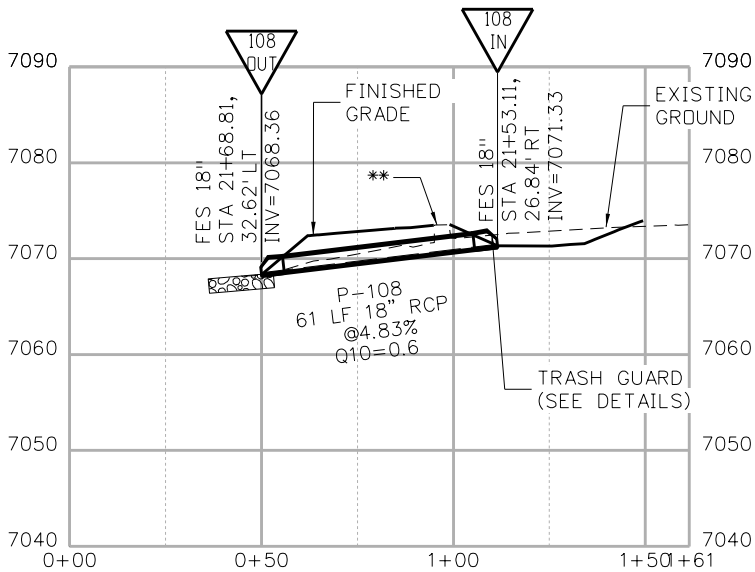


NOTES:

1. CONCRETE SHALL BE CDOT CLASS B.
2. CONCRETE PIPE COLLARS WILL NOT BE PAID FOR SEPARATELY BUT SHALL BE INCLUDED IN THE WORK.
3. THE INTERIOR SURFACE OF THE CONCRETE COLLAR SHALL BE FINISHED SMOOTH TO MATCH THE ADJOINING PIPE SURFACES.

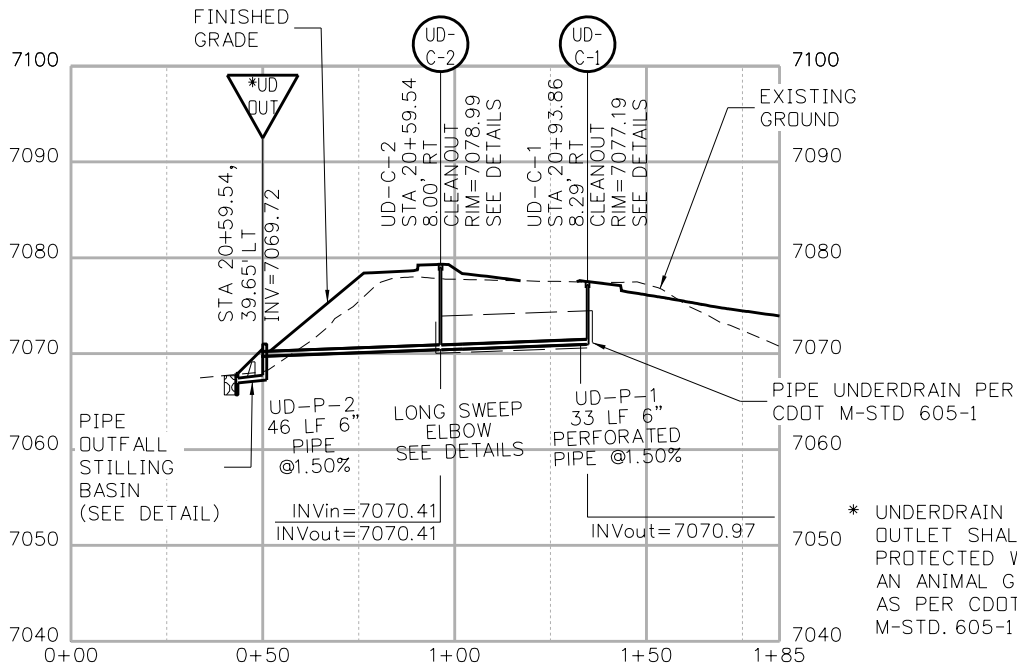
CONCRETE PIPE COLLAR

N.T.S.



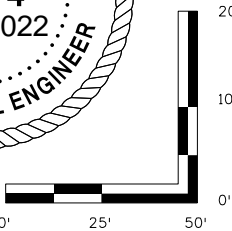
LINE 108

\*\* ANNULAR SPACE BETWEEN PIPE AND EXISTING CULVERT UNDER SIDEWALK SHALL BE BACKFILLED WITH STRUCTURE BACKFILL (FLOW-FILL) MATERIAL AS PER CDOT SPECIFICATIONS.



PIPE UNDERDRAIN

\* UNDERDRAIN PIPE OUTLET SHALL BE PROTECTED WITH AN ANIMAL GUARD AS PER CDOT M-STD. 605-1



Print Date: 6/7/2022
File Name: School Access HYDR_07 PnP.dgn
Horiz. Scale: 1:50 Vert. Scale: 20:1
<b>HDR</b> 5555 TECH CENTER DRIVE, SUITE 310 COLORADO SPRINGS, CO 80919 PHONE: 719-272-8800

Sheet Revisions		
Date:	Comments	Init.



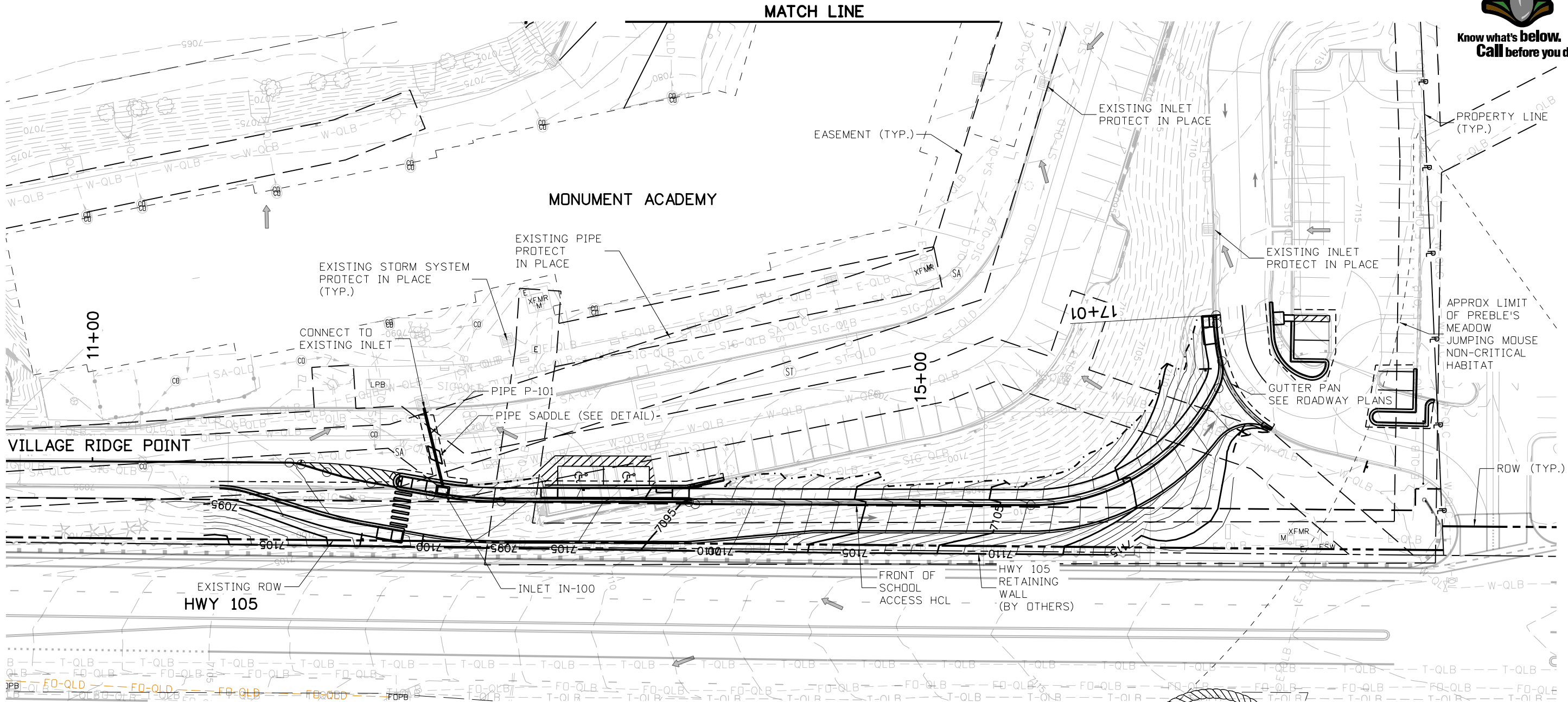
As Constructed		MONUMENT ACADEMY DRAINAGE PROFILES BACK OF SCHOOL		Project No./Code
No Revisions:		Designer: A.VANCE	Structure Numbers	19734
Revised:		Detailer: A.VANCE		STA 105A-014
Void:		Sheet Subset: DRNG	Subset Sheets: 9 of 11	Sheet Number



AVANCE 3:43:36 PM pw:\\PWAPPDMA001\\NorthCentral\\Omaha\\Documents\\200716\\000000000260510\\6.0\_CAD\_BIM\\6.2\_Work\_In\_Progress\\Hydraulics\\Drawings\\Monument Academy\\School Access HYDR\_08 PnP.dgn



Know what's below.  
Call before you dig.

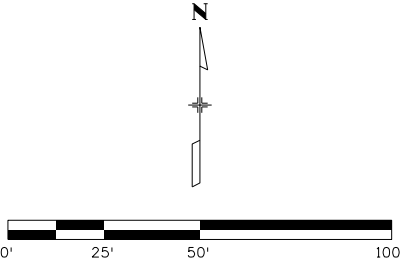


**LEGEND:**

→ FLOW DIRECTION

**NOTES:**


1. SEE DRAINAGE NOTES, DETAILS AND PROFILES FOR ADDITIONAL INFORMATION.
2. SEE SITE GRADING AND ROADWAY PLANS FOR ADDITIONAL DITCH INFORMATION.
3. ALL RIPRAP SHALL BE D50=9" WITH AN 18" MINIMUM THICKNESS UNLESS NOTED OTHERWISE.



Print Date: 6/7/2022

File Name: School Access HYDR\_08 PnP.dgn

Horiz. Scale: 1:50      Vert. Scale: None



5555 TECH CENTER DRIVE, SUITE 310  
COLORADO SPRINGS, CO 80919    PHONE: 719-272-8800

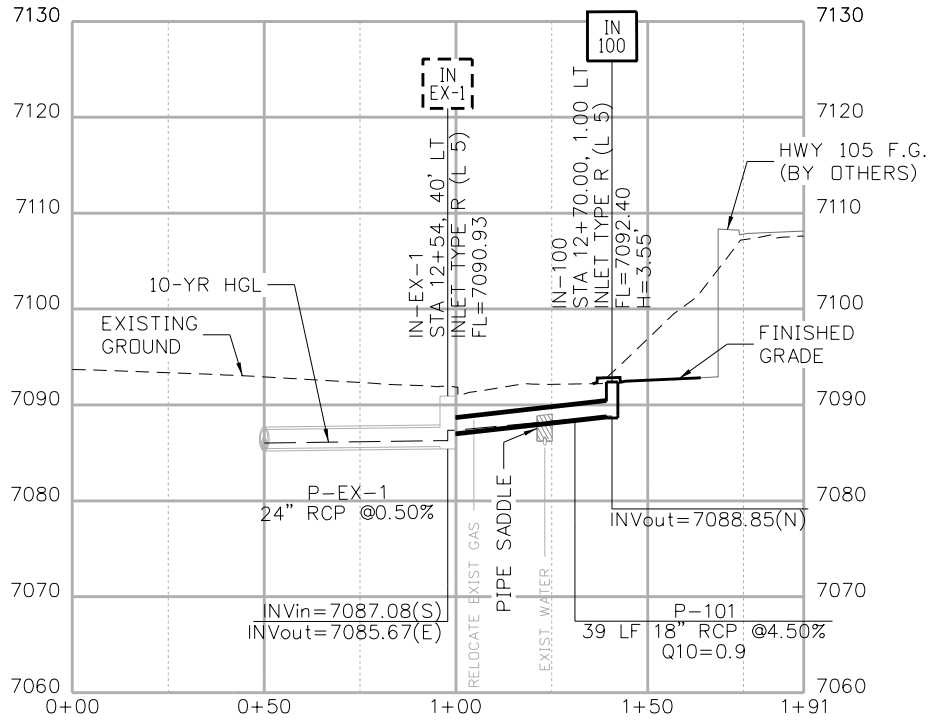
0000

Sheet Revisions		
Date:	Comments	Init.



As Constructed		MONUMENT ACADEMY DRAINAGE PLAN FRONT OF SCHOOL		Project No./Code
No Revisions:		Designer: A.VANCE	Structure Numbers	19734
Revised:		Detailer: A.VANCE		STA 105A-014
Void:		Sheet Subset: DRNG	Subset Sheets: 10 of 11	Sheet Number

AVANCE 3:43:39 PM pw:\\PWAPDMA001\\NorthCentral\\Dmaha\\Documents\\200716\\0000000000260510\\6.0\_CAD\_BIM\\6.2\_Work\_In\_Progress\\Hydraulics\\Drawings\\Monument Academy\\School Access HYDR\_09 PnP.dgn



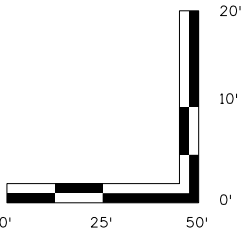
LINE 100



Know what's below.  
Call before you dig.

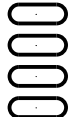
**NOTES:**

1. SEE DRAINAGE DETAILS FOR ADDITIONAL INFORMATION.



Print Date: 6/7/2022  
File Name: School Access HYDR\_09 PnP.dgn  
Horiz. Scale: 1:50 Vert. Scale: 20:1

**AVANCE** 5555 TECH CENTER DRIVE, SUITE 310  
COLORADO SPRINGS, CO 80919 PHONE: 719-272-8800



**Sheet Revisions**

Date:	Comments	Init.



**As Constructed**

No Revisions:

Revised:

Void:

**MONUMENT ACADEMY  
DRAINAGE PROFILES  
FRONT OF SCHOOL**

Designer: A.VANCE

Detailer: A.VANCE

Sheet Subset: DRNG

Structure

Numbers

Subset Sheets: 11 of 11

**Project No./Code**

19734

STA 105A-014

Sheet Number