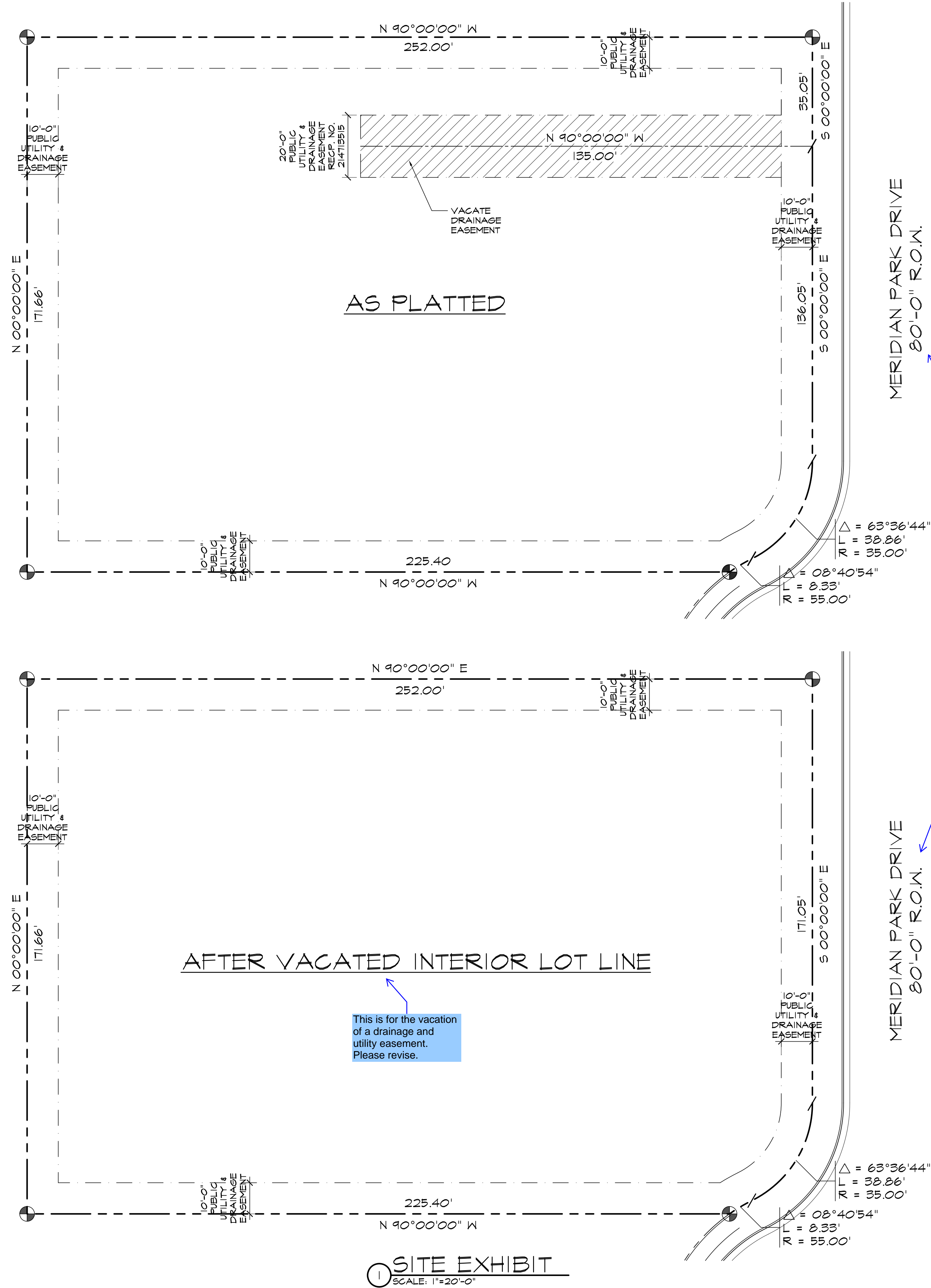


VACATION OF INTERIOR LOT LINE MAP FOR BENT GRASS COMMERCIAL LOT 3 & LOT 3B



This document is for the vacation of a drainage and utility easement within Lot 3B. Please revise.

Plat #14172 shows Meridian Park Drive with 60' ROW. Please revise.

This is for the vacation of a drainage and utility easement. Please revise.

DRAWING INDEX

1 OF 1 - VACATION OF INTERIOR LOT LINE

VICINITY MAP

NOT TO SCALE

PROJECT INFORMATION

PROPERTY INFORMATION	
OWNER NAME:	DVM PROPERTIES, LLC 8036 MERIDIAN PARK DR PEYTON, CO 80831
LEGAL DESCRIPTION:	LOT 3B BENT GRASS EAST COMMERCIAL FIL NO 2B
PARCEL NUMBER:	53011-01-061
ZONING:	CS
LOT SIZE:	42,986 SF (0.98 ACRES)
CURRENT USE:	VETERINARY HOSPITAL
FLOODPLAIN STATEMENT:	ZONE X (MAP NO. 080410515F, DATED MARCH 17, 1991)
PETITIONER COMPANY:	
HAMMERS CONSTRUCTION, INC. 1411 WOOLSEY HEIGHTS COLO. SPRGS, CO 80915 (719)-570-1549 (719)-570-7008 LISA PETERSON lpeterson@hammersconstruction.com	

SITE LEGEND

---	PROPERTY LINE
---	BUILDING SETBACK
---	LANDSCAPE SETBACK
---	UTILITY EASEMENT
---	DRAINAGE EASEMENT
---	UTILITY & DRAINAGE EASEMENT
●	PROPERTY CORNER

HAMMERS CONSTRUCTION INC.

COMMERCIAL GENERAL CONTRACTORS SPECIALIZING IN DESIGN/BUILD

PRESIDENT: STEVE R. HAMMERS
VICE PRES. DAVID J. HAMMERS
1411 WOOLSEY HEIGHTS
COLORADO SPRINGS, CO 80915
(719) 570-1549 FAX (719) 570-7008
www.hammersconstruction.com

THIS DRAWING CONTAINS MATERIAL & INFORMATION WHICH MAY NOT BE REPRODUCED WITHOUT WRITTEN CONSENT OF HAMMERS CONSTRUCTION, INC. THESE DRAWINGS ARE INTENDED TO BE USED ONLY BY HAMMERS CONSTRUCTION & ITS REPRESENTATIVES. THESE DRAWINGS HAVE NOT BEEN PREPARED FOR ANY OTHER PURPOSE THAN TO INDICATE THE GENERAL FEATURES AND PLACEMENT OF THE PROPOSED PROJECT. COPYRIGHT © 2018 HAMMERS CONSTRUCTION

TENDER CARE

VET CENTER - ADDITION
8036 MERIDIAN PARK DRIVE
PEYTON, CO 80831
EL PASO COUNTY, COLORADO

DATE: OCTOBER 26, 2018
DRAWN BY: J. CANTERBERRY
PROJ. MGR: J. BUTLER
SCALE: SEE PLAN
APPROVED BY:
JOB NO: 1074

RESUBMITTALS:

▲

▲

▲

▲

▲

▲

