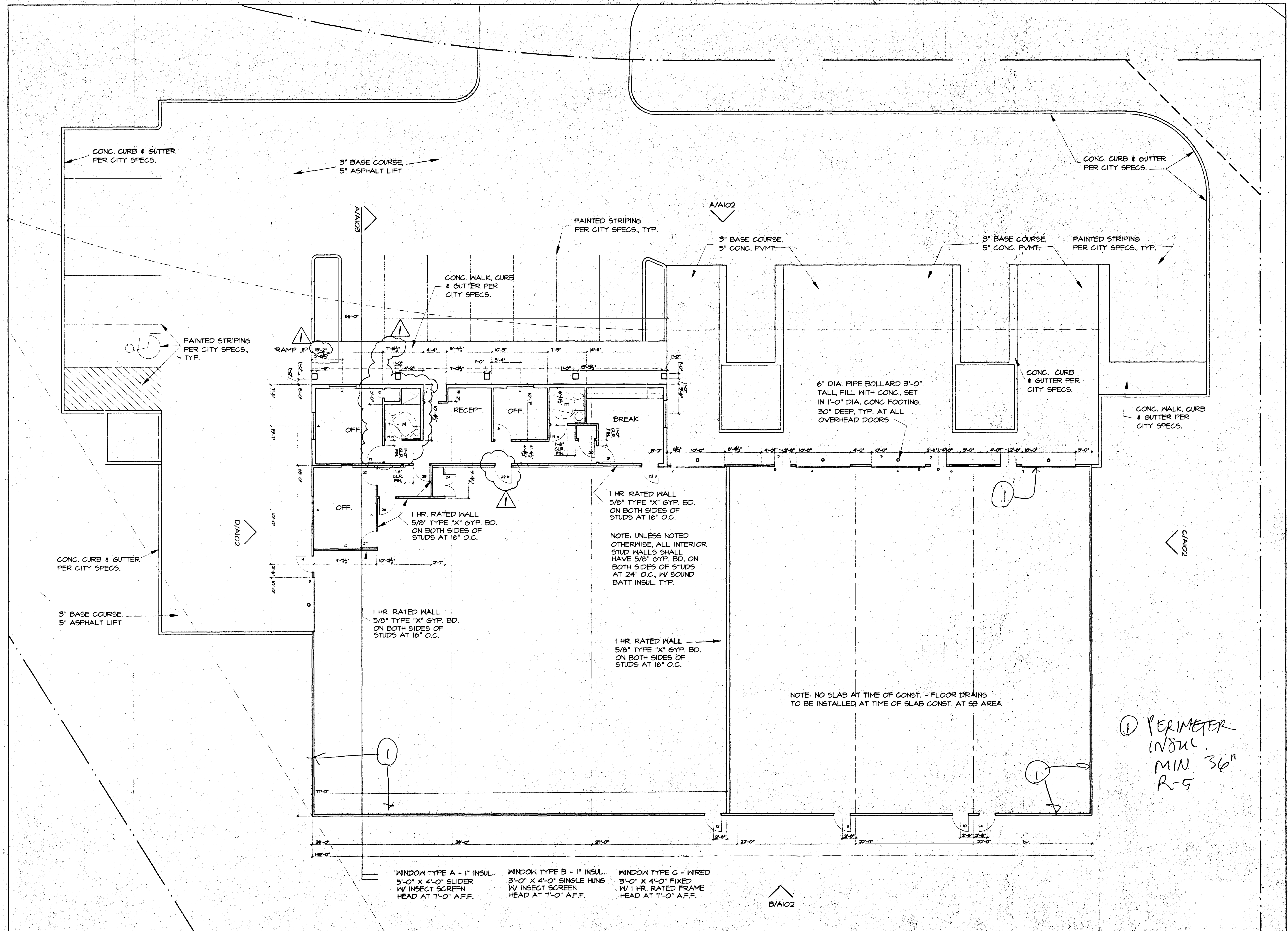


**Provided Bicycle Parking:** One Space

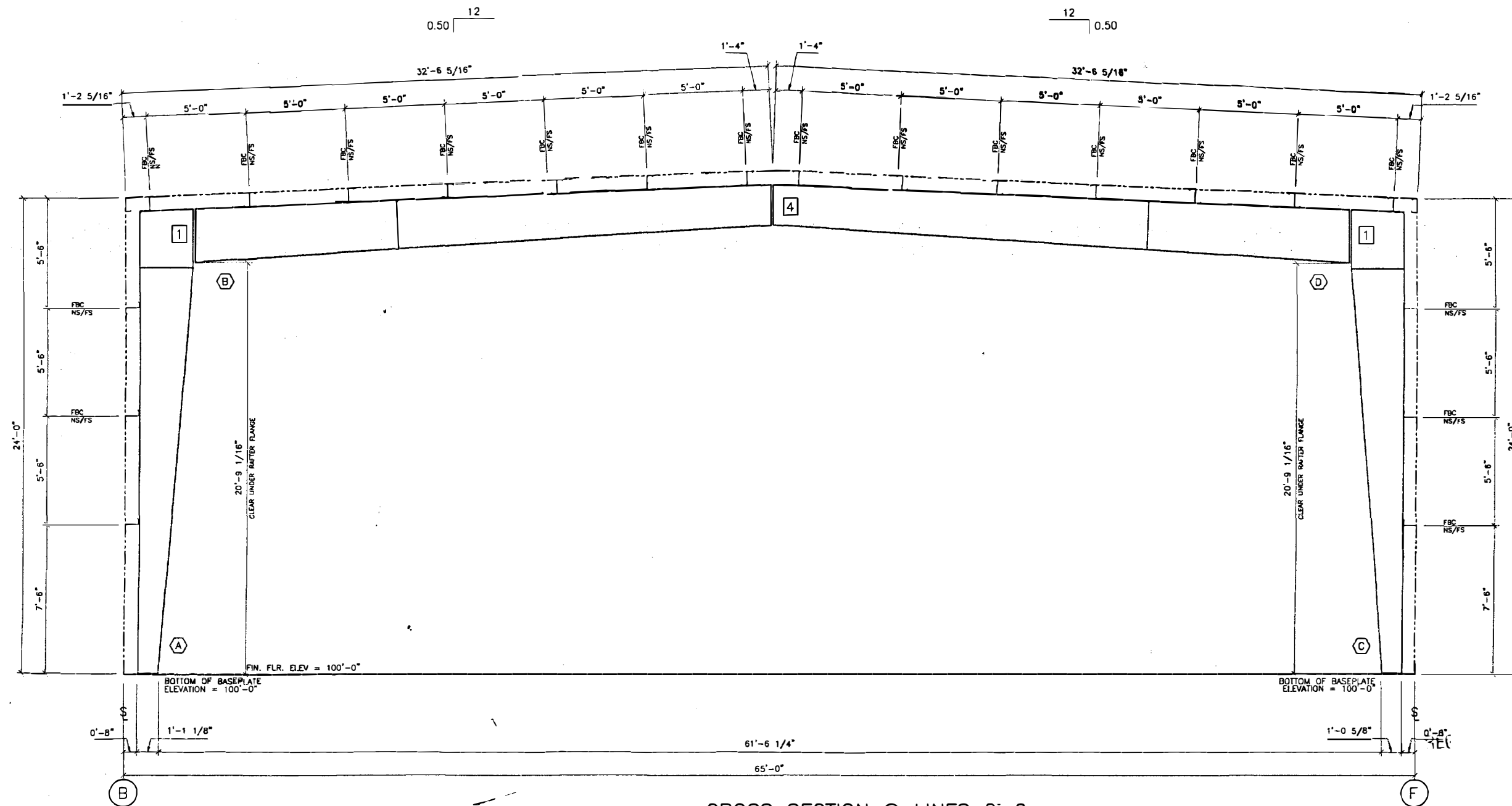
SCALE: 1/16" = 1'-0"





A  
A101

FLOOR PLAN  
SCALE: 1/8" = 1'-0"



CROSS SECTION @ LINES 2-6

**NOTES:**

- 1) FOR COLUMN AND RAFTER MARK NUMBERS, SEE EITHER SHEET E1 (ROOF FRAMING PLAN).
- 2) FBC\_\_\_ INDICATES FLANGE BRACING LOCATIONS ON PURLIN ROOFS.  
FBD\_\_\_ INDICATES FLANGE BRACING LOCATIONS ON JOIST ROOFS.
- 3) NS/FS INDICATES THAT FLANGE BRACING IS REQUIRED ON BOTH SIDES OF THE FRAME LINE. NOTE FOR EXPANDABLE ENDWALL RIGID FRAMES: IF FLANGE BRACING IS REQUIRED ON BOTH SIDES OF AN EXPANDABLE ENDFRAME, THE OPPOSITE SIDE FLANGE BRACE WILL HAVE TO BE INSTALLED AT THE TIME OF EXPANSION. THESE FLANGE BRACES HAVE BEEN PROVIDED, AS REQUIRED, FOR THIS FUTURE CONDITION.
- 4) IF NS/FS FLANGE BRACING IS NOT INDICATED, ONLY ONE FLANGE BRACE IS REQUIRED AND CAN BE LOCATED ON EITHER SIDE OF THE FRAME.
- 5) "\*" INDICATES THE LONG SIDE OF INTERIOR COLUMNS. IF INTERIOR COLUMNS ARE REQUIRED, ORIENT AND ERECT THOSE COLUMNS ACCORDINGLY. NOTE: COLUMNS LOCATED AT THE RIDGE ARE TYPICALLY "FLAT-TOP" COLUMNS, UNLESS INDICATED BY THE "\*" SYMBOL.
- 6) RIGID FRAMES SHALL HAVE 50% OF THEIR BOLTS INSTALLED AND TIGHTENED ON BOTH SIDES OF THE WEB ADJACENT TO EACH FLANGE BEFORE THE HOISTING EQUIPMENT IS RELEASED.

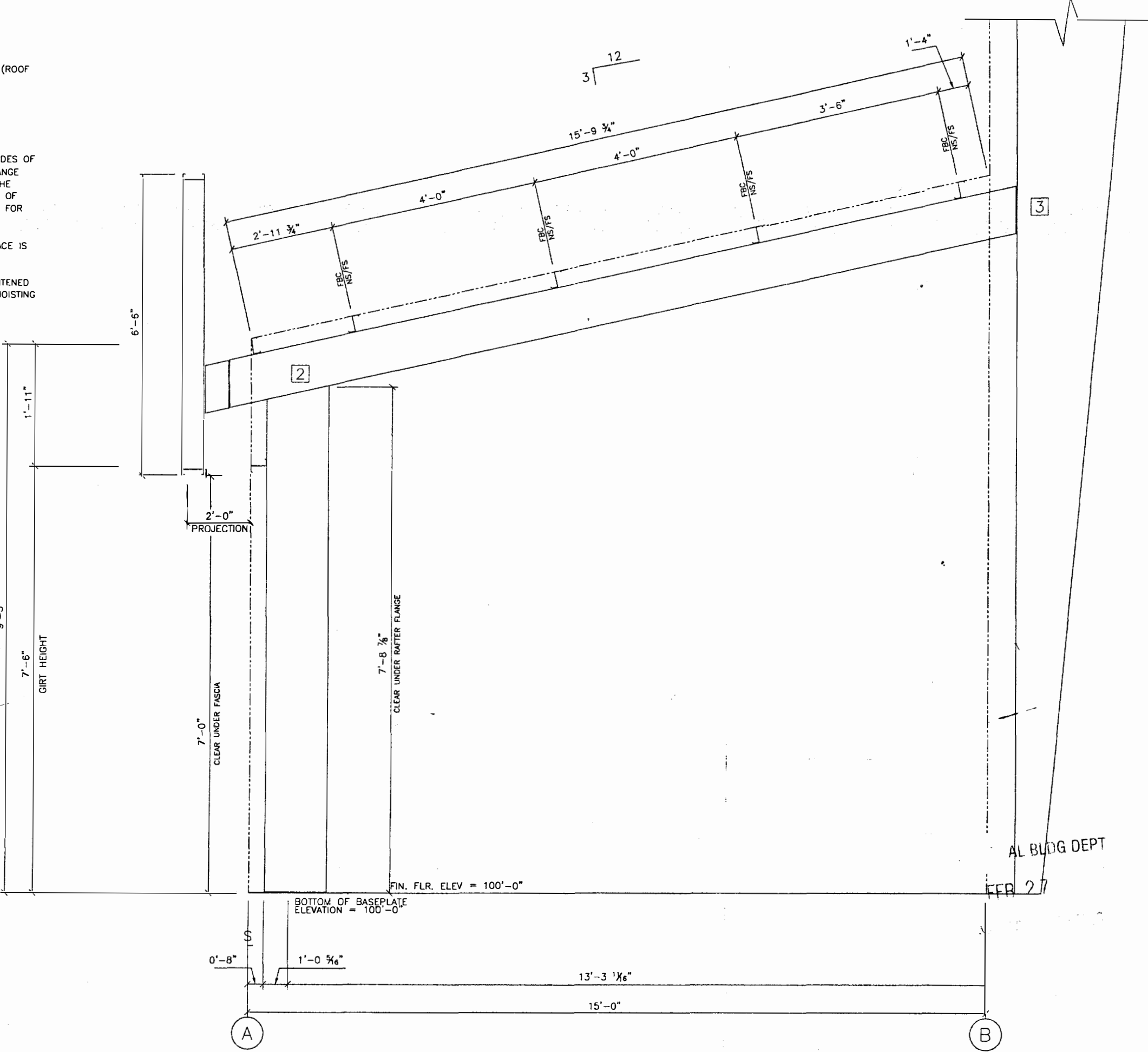
**BOLT SCHEDULE**

MBR ID	LOW PLATE WIDTH THICK	HIGH PLATE WIDTH THICK	OUTSIDE FLANGE WIDTH THICK LENGTH	INSIDE FLANGE WIDTH THICK LENGTH	MEMBER WEB DEPTH THICK LENGTH	CON ID	BOLT QTY	BOLT DESCRIPTION	BOLT PART#	NUT PART#
A	8.00 0.50	6.00 0.63	6.00 0.50 279.56	6.00 0.63 246.13	13.13 0.175 245.33	1	8	BOLT/NUT 3/4" X 2 3/4" A325	H0630	H0320
					33.13 0.275 34.23	2	8	BOLT/NUT 1/2" X 2" A325	H0603	H0300
					33.13	3	8	BOLT/NUT 5/8" X 2 1/4" A325	H0610	H0310
B	6.00 0.63	6.00 0.63	6.00 0.25 121.69 6.00 0.31 226.19	6.00 0.31 348.31	32.56 0.225 121.69	4	8	BOLT/NUT 1" X 3 1/4" A325	H0640	H0330
					29.81 0.200 226.22	5	8	BOLT/NUT 1 1/4" X 3 1/2" A325	H0660	H0340
					24.63					
C	8.00 0.50	6.00 0.63	6.00 0.25 279.56	6.00 0.38 246.13	12.63 0.175 245.33					
					32.63 0.275 34.23					
					32.63					
D	6.00 0.63	6.00 0.63	6.00 0.25 121.06 6.00 0.31 227.06	6.00 0.31 348.56	32.56 0.225 121.06					
					29.81 0.200 227.09					
					24.63					

CROSS SECTION @ LINES 2-3

NOTES:

- 1) FOR COLUMN AND RAFTER MARK NUMBERS, SEE EITHER SHEET E1 (ROOF FRAMING PLAN).
- 2) FBC\_\_\_ INDICATES FLANGE BRACING LOCATIONS ON PURLIN ROOFS.  
FBD\_\_\_ INDICATES FLANGE BRACING LOCATIONS ON JOIST ROOFS.
- 3) NS/FS INDICATES THAT FLANGE BRACING IS REQUIRED ON BOTH SIDES OF THE FRAME LINE. NOTE FOR EXPANDABLE ENDWALL RIGID FRAMES: IF FLANGE BRACING IS REQUIRED ON BOTH SIDES OF AN EXPANDABLE ENDFRAME, THE OPPOSITE SIDE FLANGE BRACE WILL HAVE TO BE INSTALLED AT THE TIME OF EXPANSION. THESE FLANGE BRACES HAVE BEEN PROVIDED, AS REQUIRED, FOR THIS FUTURE CONDITION.
- 4) IF NS/FS FLANGE BRACING IS NOT INDICATED, ONLY ONE FLANGE BRACE IS REQUIRED AND CAN BE LOCATED ON EITHER SIDE OF THE FRAME.
- 5) RIGID FRAMES SHALL HAVE 50% OF THEIR BOLTS INSTALLED AND TIGHTENED ON BOTH SIDES OF THE WEB ADJACENT TO EACH FLANGE BEFORE THE HOISTING EQUIPMENT IS RELEASED.



BOLT SCHEDULE

CON ID	BOLT QTY	BOLT DESCRIPTION	BOLT PART#	NUT PART#
1	8	BOLT/NUT 3/4" X 2 3/4" A325	H0630	H0320
2	4	BOLT/NUT 1/2" X 2" A325	H0603	H0300
3	2	BOLT/NUT 5/8" X 2 1/4" A325	H0610	H0310
4	8	BOLT/NUT 1" X 3 1/4" A325	H0640	H0330
5	8	BOLT/NUT 1 1/4" X 3 1/2" A325	H0660	H0340