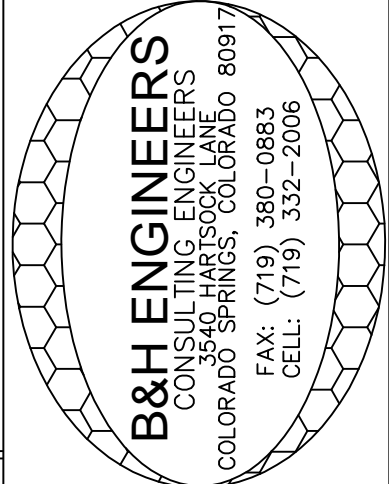
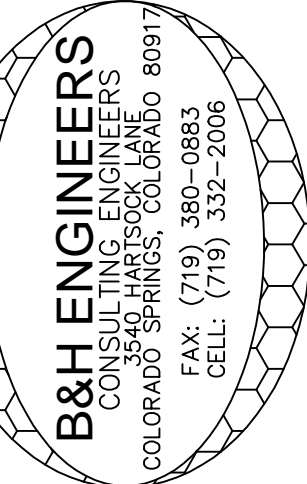


PHOTO METRIC PLAN  
SCALE: 1/16" = 1'0"



B&H ENGINEERS  
CONSULTING ELECTRICAL, MECHANICAL & PLUMBING ENGINEERS  
3540 HARTSOCK LANE  
COLORADO SPRINGS, COLORADO 80917  
(719) 332-2006

A STORAGE PLACE

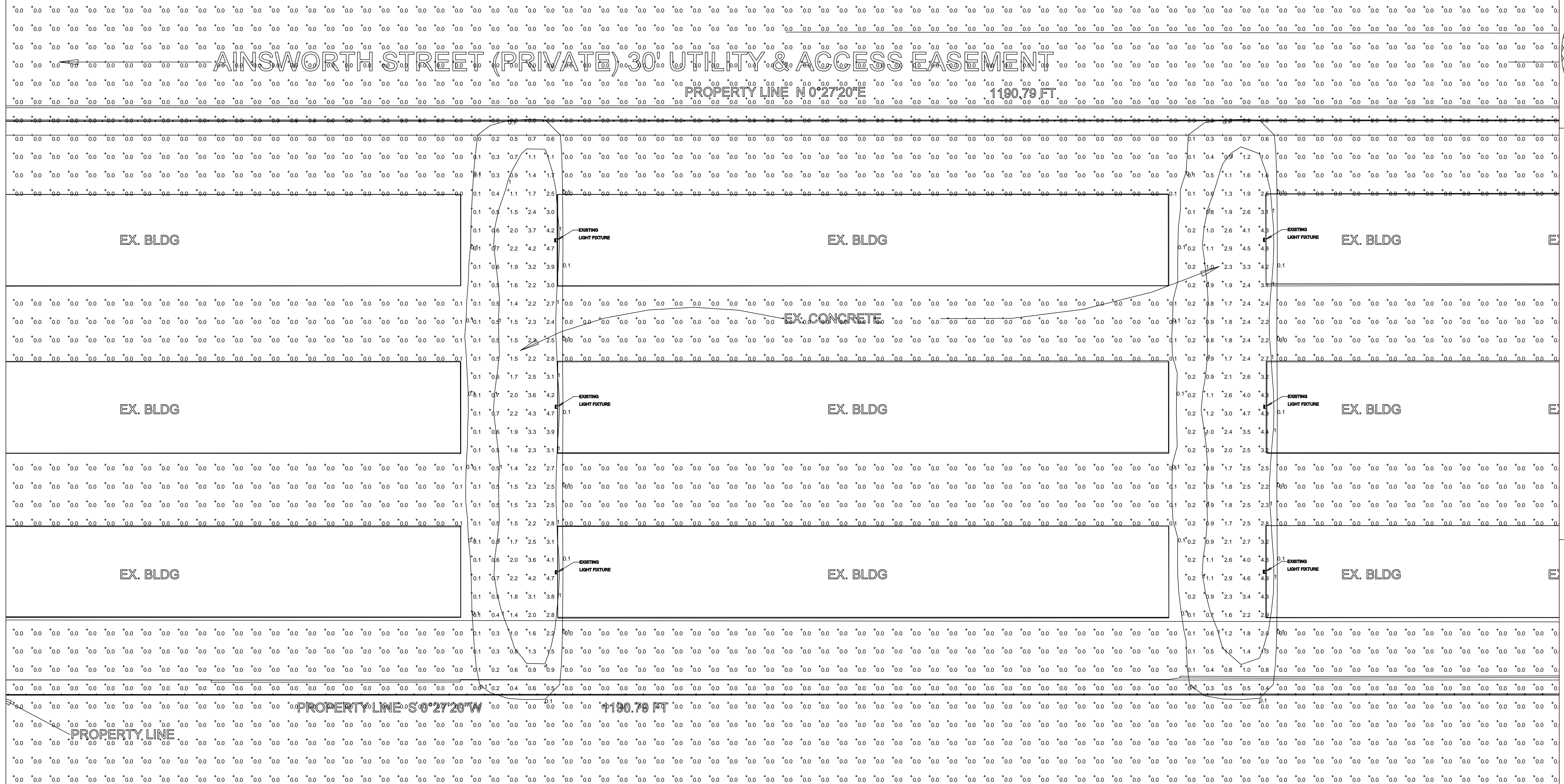


FILE NAME

DATE:	4-30-20
JOB NO.	
DRAWN BY:	B&H
CHECKED BY:	BP
REVISION/DATE	
	03-10-20

5835 OMAHA BLVD.  
COLORADO SPRINGS, CO

## PM2



SCALE: 1/16" = 1'0"



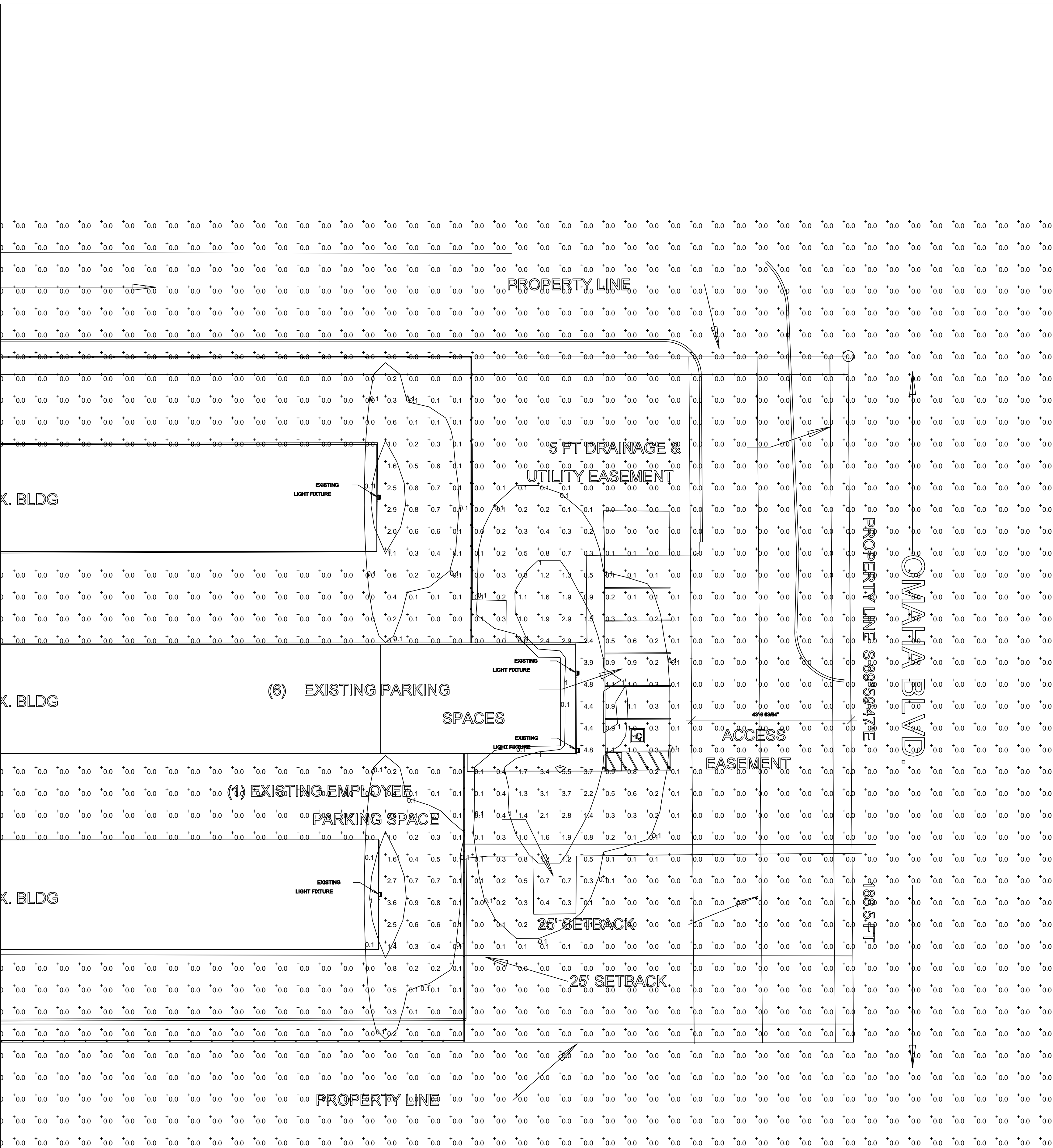
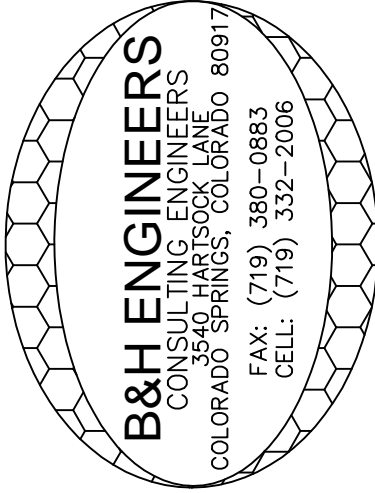


PHOTO METRIC PLAN  
SCALE: 1/16" = 1'0"



**B&H ENGINEERS**  
CONSULTING ELECTRICAL, MECHANICAL & PLUMBING ENGINEERS  
3540 HARTSOCK LANE  
COLORADO SPRINGS, COLORADO 80917

REVISION/DATE  
03-10-20

FILE NAME

# A STORAGE PLACE

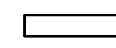
5835 OMAHA BLVD  
COLORADO SPRINGS, CO

B&H ENGINEERS

PHOTO METRIC PLAN

PM3

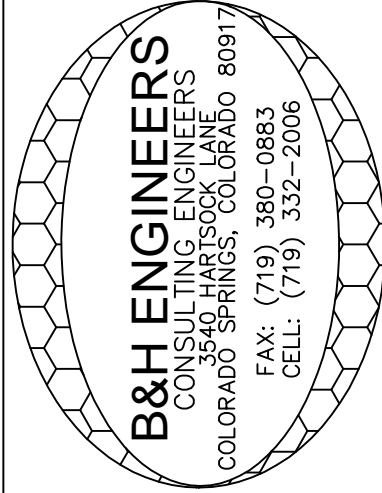


Schedule											
Symbol	Label	Quantity	Manufacturer	Catalog Number	Description	Lamp	Number Lamps	Filename	Lumens Per Lamp	Light Loss Factor	Wattage
	A	18	Lithonia Lighting	DSXW1 LED 10C 1000 40K T2M MVOLT	DSXW1 LED WITH (1) 10 LED LIGHT ENGINES, TYPE T2M OPTIC, 4000K, @ 1000mA.	LED	1	DSXW1_LED_10C_1000_40K_T2M_MVOLT.ies	3771	1	38.8

### GENERAL NOTES

1. ALL WORK SHALL BE DONE IN COMPLIANCE WITH 2014 NEC, IBC 2015, 2015 IECC, 2017 PPRBC, 2015 IMC, 2015 IPC, AND ALL OTHER LOCAL CODES.
2. ELECTRICAL CONTRACTOR SHALL VISIT SITE AND EXAMINE DRAWINGS OF OTHER TRADES ON THIS PROJECT, ARCHITECTURAL AND MECHANICAL, TO DETERMINE ANY ADDITIONAL WORK THAT MAY BE REQUIRED FOR A COMPLETE AND OPERATIONAL ELECTRICAL INSTALLATION AND SHALL INCLUDE AN ALLOWANCE FOR THIS WORK IN HIS BID.
3. CONTRACTOR SHALL BE HELD RESPONSIBLE FOR VERIFICATION OF EXISTING JOB CONDITIONS PRIOR TO BID. NO ADDITIONAL COSTS SHALL BE AWARDED TO THE SUCCESSFUL CONTRACTOR OR HIS SUBCONTRACTORS.
4. THE CONDUIT SYSTEM AND ALL CONDUCTING WIRE ENCLOSURES SHALL BE SECURELY BONDED TOGETHER.
5. THESE NOTES ARE GENERAL AND MAY NOT APPLY TO THE EXACT SCOPE OF WORK.

Statistics						
Description	Symbol	Avg	Max	Min	Max/Min	Avg/Min
Calc Zone #2	+	0.3 fc	7.5 fc	0.0 fc	N/A	N/A



CONSULTING ELECTRICAL, MECHANICAL & PLUMBING ENGINEERS

3540 HARTSOCK LANE  
COLORADO SPRINGS, CO 80917

REVISION/DATE	FILE NAME
03-10-20	
4-30-20	
JOB NO.	
DRAWN BY: B&H	
CHECKED BY: BP	

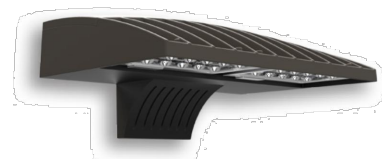
ASTORAGE PLACE

5835 OMAHA BLVD  
COLORADO SPRINGS, CO

B&H ENGINEERS

PHOTO METRIC PLAN

PM4



## D-Series Size 1 LED Wall Luminaire

Catalog Number
Notes
Type

Hit the Tab key or mouse over the page to see all interactive elements.

### Specifications Luminaire

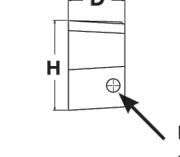
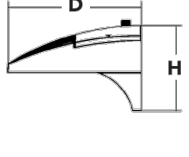
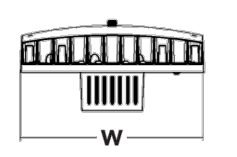
**Width:** 13-3/4" (34.9 cm)  
**Depth:** 10" (25.4 cm)  
**Height:** 6-3/8" (16.2 cm)

**Weight:** 12 lbs (5.4 kg)

### Back Box (BBW, ELCW)

**Width:** 13-3/4" (34.9 cm)  
**Depth:** 4" (10.2 cm)  
**Height:** 6-3/8" (16.2 cm)

**BBW Weight:** 5 lbs (2.3 kg)  
**ELCW Weight:** 10 lbs (4.5 kg)



For 3/4" NPT side-entry conduit (BBW only)

### Introduction

The D-Series Wall luminaire is a stylish, fully integrated LED solution for building-mount applications. It features a sleek, modern design and is carefully engineered to provide long-lasting, energy-efficient lighting with a variety of optical and control options for customized performance.

With an expected service life of over 20 years of nighttime use and up to 74% in energy savings over comparable 250W metal halide luminaires, the D-Series Wall is a reliable, low-maintenance lighting solution that produces sites that are exceptionally illuminated.

### Ordering Information

EXAMPLE: DSXW1 LED 20C 1000 40K T3M MVOLT DDBTXD

Series	LEDs	Drive Current	Color temperature	Distribution	Voltage	Mounting	Control Options
DSXW1 LED	10C 10 LEDs (one engine) 20C 20 LEDs (two engines)	350 350 mA 530 530 mA 700 700 mA 1000 1000 mA (1A)	30K 3000 K 40K 4000 K 50K 5000 K AMRPC Amber phosphor converted	T2S Type II Short T2M Type II Medium T3S Type III Short T3M Type III Medium T4M Type IV Medium TFTM Forward Throw Medium ASYDF Asymmetric diffuser	MVOLT <sup>1</sup> 120 <sup>2</sup> 208 <sup>3</sup> 240 <sup>3</sup> 277 <sup>3</sup> 347 <sup>3</sup> 480 <sup>3</sup>	Shipped included (blank) Surface mounting bracket BBW Surface-mounted back box (for conduit entry) <sup>4</sup> ELCW Emergency battery backup (includes external component enclosure) <sup>5</sup>	Shipped installed PE Photoelectric cell, button type <sup>4</sup> DMG 0-10V dimming driver (no controls) PIR 180° motion/ambient light sensors, <15' mtg ht <sup>3</sup> PIRH 180° motion/ambient light sensors, 15-30' mtg ht <sup>3</sup> PIRHFC3V Motion/ambient sensor, 8-15' mounting height, ambient sensor enabled at 1ft <sup>6</sup> PIRHFC3V Motion/ambient sensor, 15-30' mounting height, ambient sensor enabled at 1ft <sup>6</sup> ELCW Emergency battery backup (includes external component enclosure) <sup>5</sup>
Other Options							Finish (optional)
Shipped installed SF Single fuse (120, 277 or 347V) <sup>7</sup> DF Double fuse (208, 240 or 480V) <sup>7</sup> HS House-side shield <sup>8</sup> SPD Separate surge protection <sup>9</sup>							Shipped separately <sup>1</sup> BSW Bird-deterrent spikes WG Wire guard VG Vandal guard DDL Diffused drop lens
Accessories Optional and shipped separately							NOTES 1 MVOLT driver operates on any line voltage from 120-277V (50/60 Hz). Specify 120, 208, 240 or 277 options only when ordering with fusing (SF, DF optional, or photocontrol (PE) option). 2 Only available with 20C, 700mA or 1000mA. Not available with PIR or PIRH. 3 Back box ships installed on future. Cannot be field installed. Cannot be ordered as an accessory. 4 Photocontrol (PE) requires 120, 208, 240, 277 or 347 voltage option. Not available with motion/ambient light sensors (PIR or PIRH). 5 PIR and PIRHFC3V specifies the Sensor Switch SSGR-10-ODP control; PIRH specifies the Sensor Switch SSGR-6-ODP control; see Motion Sensor Guide for details. Includes ambient light sensor. Not available with "PE" option (button type photocell). Dimming driver standard. Not available with 20 LED/1000 mA configuration (DSXW1 LED 20C 1000). 6 Cold weather (20C) rated. Not compatible with conduit entry applications. Not available with BBW mounting option. Not available with fusing. Not available with 347 or 480 voltage options. Emergency components located in back box housing. Emergency mode ES files located on product page at: www.lithonia.com 7 Single fuse (SF) requires 120, 277 or 347 voltage option. Double fuse (DF) requires 208, 240 or 480 voltage option. Not available with ELCW. 8 Also available as a separate accessory; see Accessories information. 9 See the electrical section on page 3 for more details.



One Lithonia Way • Conyers, Georgia 30012 • Phone: 800.279.8041 • www.lithonia.com  
© 2013-2016 Acuity Brands Lighting, Inc. All rights reserved.

### Performance Data

#### Lumen Output

Lumen values are from photometric tests performed in accordance with IESNA LM-79-08. Data is considered to be representative of the configurations shown, within the tolerances allowed by Lighting Facts. Contact factory for performance data on any configurations not shown here.

LED	Drive Current (mA)	System Watt	Dist. Type	Beam Angle	Beam Diameter (ft)	Beam Diameter (in)	Beam Diameter (mm)	Beam Diameter (cm)	Beam Diameter (m)	Beam Diameter (ft)	Beam Diameter (in)	Beam Diameter (mm)	Beam Diameter (cm)	Beam Diameter (m)	Beam Diameter (ft)	Beam Diameter (in)	Beam Diameter (mm)	Beam Diameter (cm)	Beam Diameter (m)
350mA	14W		T2S	1415	0	0	1	101	1.520	0	0	1	109	1.529	0	0	1	109	1.529
530 mA	20W		T2S	1415	0	0	1	101	1.520	0	0	1	109	1.529	0	0	1	109	1.529
700 mA	27W		T2S	1415	0	0	1	101	1.520	0	0	1	109	1.529	0	0	1	109	1.529
1000 mA	40W		T2S	1415	0	0	1	101	1.520	0	0	1	109	1.529	0	0	1	109	1.529
350mA	24W		T2S	1415	0	0	1	101	1.520	0	0	1	109	1.529	0	0	1	109	1.529
530 mA	36W		T2S	1415	0	0	1	101	1.520	0	0	1	109	1.529	0	0	1	109	1.529
700 mA	47W		T2S	1415	0	0	1	101	1.520	0	0	1	109	1.529	0	0	1	109	1.529
1000 mA	74W		T2S	1415	0	0	1	101	1.520	0	0	1	109	1.529	0	0	1	109	1.529

### Performance Data

#### Lumen Ambient Temperature (LAT) Multipliers

Use these factors to determine relative lumen output for average ambient temperatures from 0-40°C (32-104°F).

Ambient	Lumen Multiplier
0°C	1.02
10°C	1.01
20°C	1.00
25°C	1.00
30°C	0.99
40°C	0.98

#### Electrical Load

LEDs	Drive Current (mA)	System Watt	Current (A)	120V	208V	240V	277V	347V	480V
10C	350	14W	0.13	0.07	0.06	0.06	-	-	-
20C	530	20W	0.19	0.11	0.09	0.08	-	-	-
30C	700	27W	0.25	0.14	0.13	0.11	-	-	-
40C	1000	40W	0.37	0.21	0.19	0.16	-	-	-
50C	350	24W	0.23	0.13	0.12	0.10	-	-	-
60C	530	36W	0.33	0.19	0.17	0.14	-	-	-
70C	700	47W	0.44	0.25	0.22	0.19	0.15	0.11	-
80C	1000	74W	0.69	0.40	0.35	0.30	0.23	0.17	-

#### Projected LED Lumen Maintenance

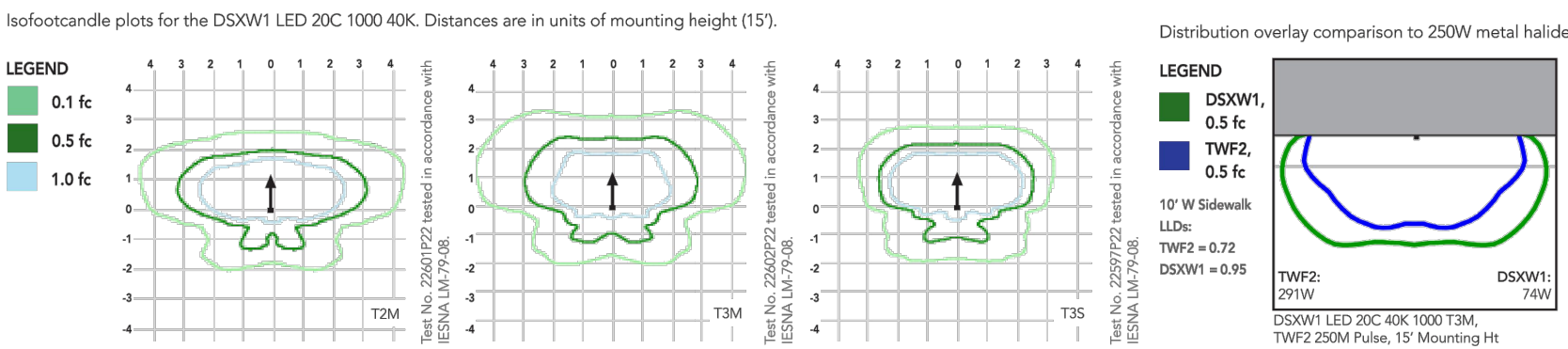
Data references the extrapolated performance projections for the DSXW1 LED 20C 1000 platform in a 20°C ambient, based on 10,000 hours of LED testing (tested per IESNA LM-80-08 and projected per IESNA TM-21-11).

To calculate LM, use the lumen maintenance factor that corresponds to the desired number of operating hours below. For other lumen maintenance values, contact factory.

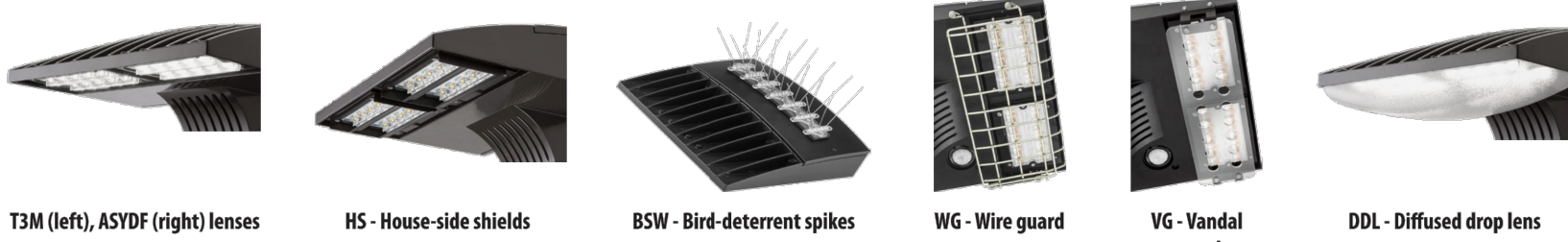
Operating Hours	0	25,000	50,000	100,000
Lumen Maintenance Factor	1.0	0.95	0.93	0.88

### Photometric Diagrams

To see complete photometric reports or download .ies files for this product, visit Lithonia Lighting's D-Series Wall Size 1 homepage.



### Options and Accessories



#### FEATURES & SPECIFICATIONS

- INTENDED USE**  
The energy savings, long life and easy-to-install design of the D-Series Wall Size 1 make it the smart choice for building-mounted doorway and pathway illumination for nearly any facility.
- CONSTRUCTION**  
Two-piece die-cast aluminum housing has integral heat sink fins to optimize thermal management through conductive and convective cooling. Modular design allows for ease of maintenance. The LED driver is mounted to the door to thermally isolate it from the light engines for low operating temperature and long life. Housing is completely sealed against moisture and environmental contaminants (IP66).
- FINISH**  
Exterior parts are protected by a zinc-inflated Super Durable TGIC thermostat powder coat finish that provides superior resistance to corrosion and weathering. A tightly controlled multi-stage process ensures a minimum 3 mils thickness for a finish that can withstand extreme climate changes without cracking or peeling. Available in textured and non-textured finishes.
- OPTICS**  
Precision-molded proprietary acrylic lenses provide multiple photometric distributions tailored specifically to building-mounted applications. Light engines are available in 3000 K (70 min. CR), 4000 K (70 min. CR) or 5000 K (70 min. CR) configurations.
- ELECTRICAL**  
Light engines consist of 10 high-efficiency LEDs mounted to a metal-core circuit board to maximize heat dissipation and promote long life (L80/10,000 hrs at 25°C). Class 1 electronic drivers have a

- power factor >90%, THD <20%, and a minimum 2.5KV surge rating. When ordering the SPD option, a separate surge protection device is installed within the luminaire which meets a minimum Category C Low (per ANSI/IEEE C82.41.2).
- INSTALLATION**  
Included universal mounting bracket attaches securely to any 4" round or square outlet box for quick and easy installation. Luminaire has a slotted gasket wireway and attaches to the mounting bracket via corrosion-resistant screws.
- LISTINGS**  
CSA certified to U.S. and Canadian standards. Rated for -40°C minimum ambient.
- DESIGNLIGHTS**  
DesignLights Consortium® (DLC) qualified product. Not all versions of this product may be DLC qualified. Please check the DLC Qualified Products List at www.designlights.org to confirm which versions are qualified.
- WARRANTY**  
Five-year limited warranty. Complete warranty terms located at www.acuitybrands.com/CustomerResources/terms\_and\_conditions.aspx.
- Note:** Actual performance may differ as a result of end-user environment and application. All values are design or typical values, measured under laboratory conditions at 25 °C. Specifications subject to change without notice.



One Lithonia Way • Conyers, Georgia 30012 • Phone: 800.279.8041 • www.lithonia.com  
© 2013-2016 Acuity Brands Lighting, Inc. All rights reserved.

DSXW1-LED  
Rev. 6/07/16