

Approved

By: Mark Gebhart  
On behalf of the PCD Executive Director  
Date: 10/16/20



El Paso County Planning & Community Development

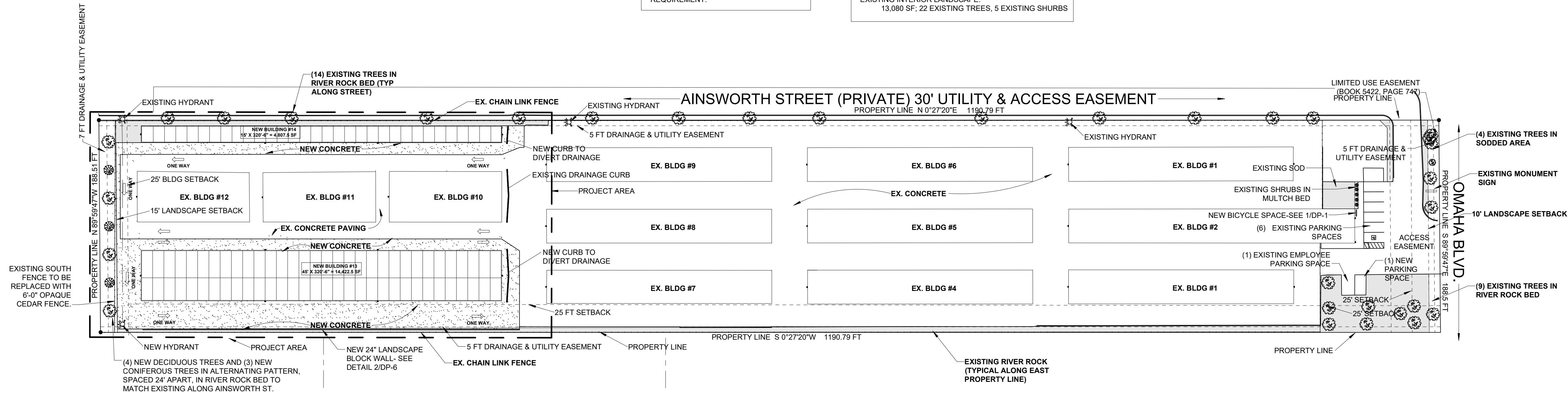
NOTE:

HATCHED AREA INDICATES EXTENT OF EXISTING LANDSCAPE AREA OUTSIDE OF REQUIRED LANDSCAPE BUFFER, AND IS APPLIED TO THE INTERNAL LANDSCAPE REQUIREMENT.

LANDSCAPE CALCULATIONS:

TOTAL LOT AREA: 224,334 SF  
5% REQUIRED INTERIOR LANDSCAPE AREA:  
224,334 x .05 = 11,217 SF; 22 TREES REQUIRED

EXISTING INTERIOR LANDSCAPE:  
13,080 SF; 22 EXISTING TREES, 5 EXISTING SHRUBS

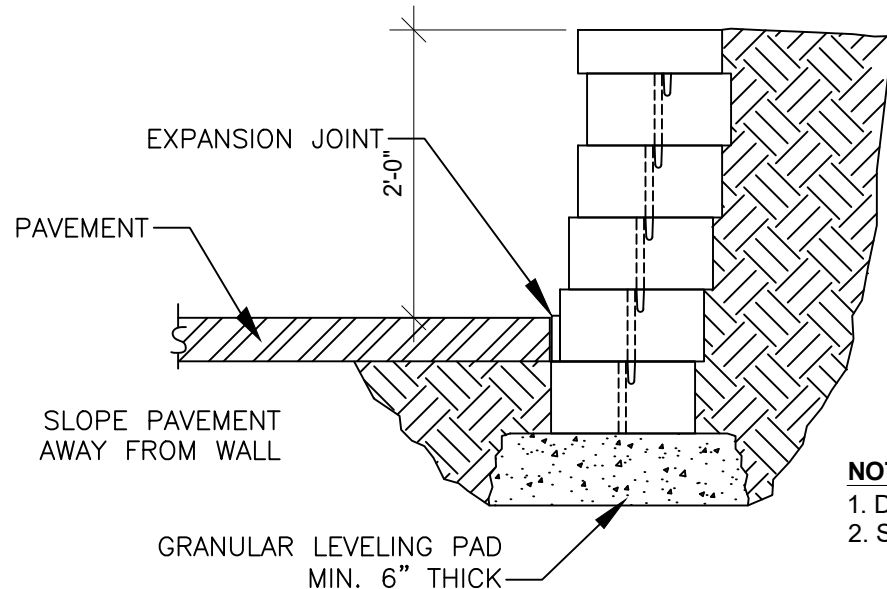
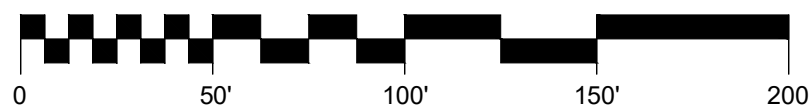


1 LANDSCAPE PLAN

1" = 50'-0"



Scale: 1 inch = 50 feet



NOTES:

- DO NOT SCALE DRAWINGS.
- SEE CIVIL GRADING PLAN FOR MORE INFO.

2 WALL DETAIL

3/4" = 1'-0"



Design Development  
Consultants @

1310 FORD STREET  
COLORADO SPRINGS, CO 80915  
(719) 570-1456

| # | DESCRIPTION     | DATE       |
|---|-----------------|------------|
| 1 | 1ST RESUBMITTAL | 03-09-2020 |
| 2 | 2ND RESUBMITTAL | 07-01-2020 |
| 3 | 3RD RESUBMITTAL | 07-29-2020 |

A STORAGE PLACE

5835 OMAHA BLVD.  
COLORADO SPRINGS, CO

D1-7204

DP

|          |            |
|----------|------------|
| DATE     | 06-19-2019 |
| CHECKED  | DCW        |
| DRAWN BY | GKC        |

LANDSCAPE  
PLAN

DP-6

PCD FILE #PPR1929