

BoCC
Chuck Broerman
03/02/2022 11:46:56 AM
Doc \$0.00
Rec \$0.00

El Paso County, CO



4

Pages

222030629

RESOLUTION NO. 22-60

BOARD OF COUNTY COMMISSIONERS
COUNTY OF EL PASO, STATE OF COLORADO

RESOLUTION TO APPROVE APPLICATION FOR PRELIMINARY ACCEPTANCE
OF CERTAIN STREETS WITHIN HANNAH RIDGE AT FEATHERGRASS FILING
NO. 6 INTO THE EL PASO COUNTY ROAD MAINTENANCE SYSTEM.

WHEREAS, the Board of County Commissioners of El Paso County, Colorado,
has received an application for preliminary acceptance of certain streets located
within the unincorporated area of El Paso County, more particularly described
herein, for addition and maintenance into the El Paso County Highway System;
and

WHEREAS, the same have been inspected by El Paso County, and the
investigations reveal the County should accept and maintain such streets;

NOW, THEREFORE, BE IT RESOLVED the Board of County Commissioners of
El Paso County, Colorado, hereby approves the preliminary acceptance for
maintenance of streets within the unincorporated area of El Paso County as
described in Exhibit A, which is attached hereto and incorporated by reference,
effective as of this date.

DONE THIS 1st day of MARCH, 2022, at Colorado Springs, Colorado.

BOARD OF COUNTY COMMISSIONERS
OF EL PASO COUNTY, COLORADO

ATTEST:

By:

County Clerk & Recorder



By:

Stan Vandenberg

CHAIR

EL PASO



COUNTY

APPLICATION FOR PRELIMINARY ACCEPTANCE INTO THE EL PASO COUNTY MAINTENANCE SYSTEM

SUBDIVISION HANNAH RIDGE AT FEATHERGRASS F6

R - T - S

PLAT 14560

APPLICANT Classic Homes Construction

65-13-32

DATE PLAT RECORDED 8/4/2020

FILE REFERENCE SF-18-093

BOCC HEARING 03/01/22

NOTES

ROAD NO.	ROAD NAME	FROM	TO	LENGTH FT/MI	ROW WIDTH	SURFACE TYPE	SURF WIDTH	F/F CG	CURB TYPE
1272	ELECTRONIC DR	BREECHERS WY	PONY CLUB LN	354'/0.07 mi	60'	4" HMA/12" CTS	30'	32'	C
1272	ELECTRONIC DR	PONY CLUB LN	SUDBV BNDY	184'/0.04 mi	60'	4" HMA/12" CTS	30'	32'	C
4431	PONY CLUB LN	BREECHERS WY	ELECTRONIC DR	647'/0.12 mi	60'	4" HMA/12" CTS	30'	32'	C
TOTAL LENGTH ACCEPTED				1185'/0.22 mi					

APPROVALS

BK ROADS DATABASE TECHNICIAN

BW INSPECTION SUPERVISOR (DSD)

CP DEVELOPMENT SERVICES DIR

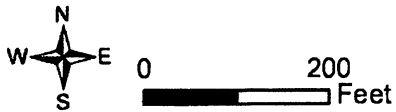
ACCEPTANCE RECOMMENDED

Jennifer E. Irvine
Jennifer E. Irvine (Jan 25, 2022 06:37 MST)

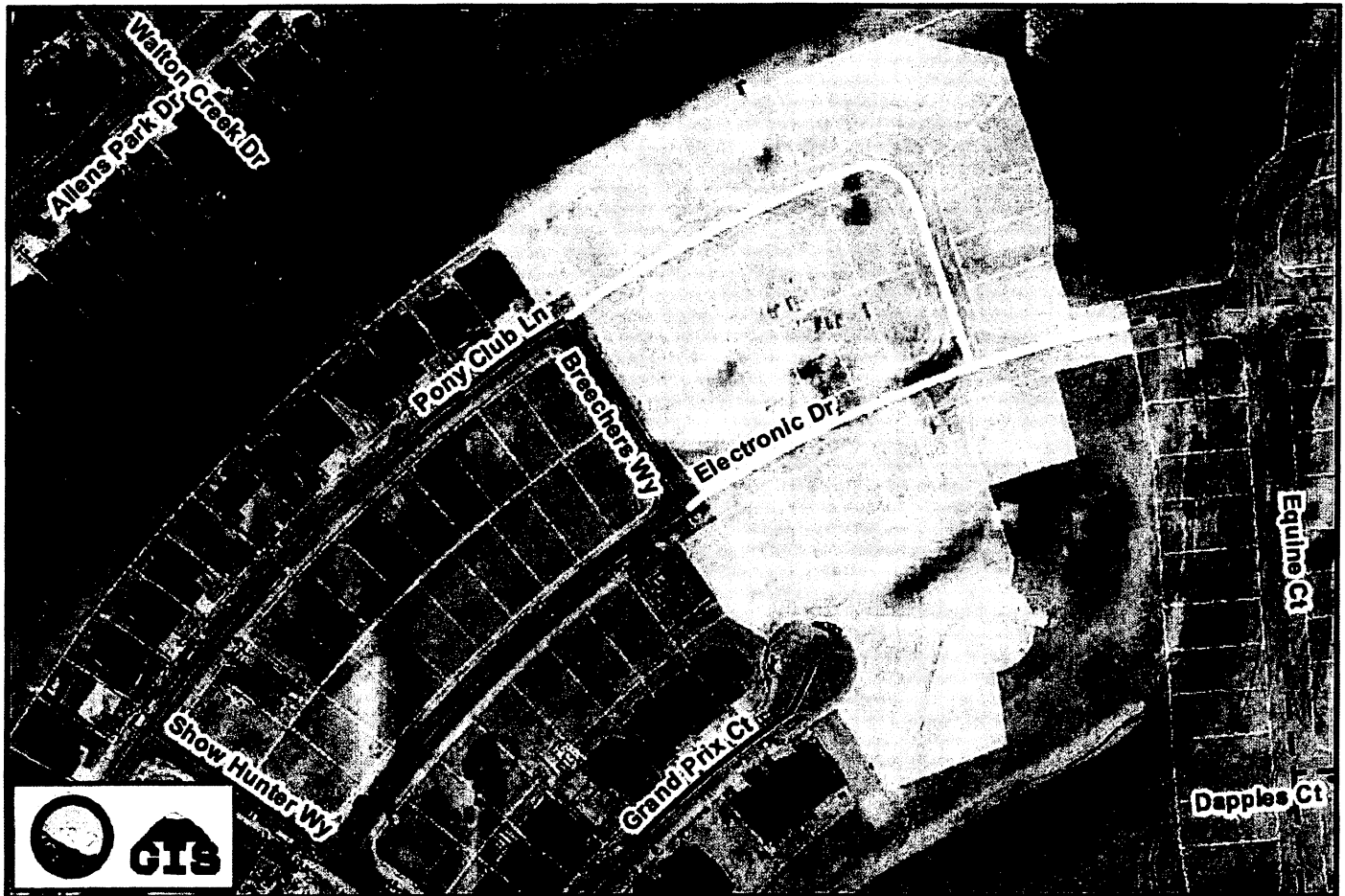
COUNTY ENGINEER

Kevin Martin
Kevin Martin (Jan 25, 2022 16:58 MST)

PUBLIC WORKS DIR



Hannah Ridge at Feathergrass F6
Preliminary Acceptance - Plat 14560
Recorded 8/4/2020



Electronic Dr
 From Breechers Wy
 (NE) Northeast
 to Pony Club Ln
 Approx. Length: 354' - 0.07 mi

Electronic Dr
 From Pony Club Ln
 (NE) Northeast
 to Sudbv Bndy
 Approx. Length: 184' - 0.03 mi

Pony Club Ln
 From Breechers Wy
 (SE) Southeast
 to Electronic Dr
 Approx. Length: 647' - 0.12 mi

Legend

Roads Accepted

Roads

Maintained Roads

— Paved and Maintained

— Gravel and Maintained

County Roads Not Maintained

— Not Accepted for Maintenance

Private Roads

— Private Roads - Private Maintenance

Misc Roads

— Other Government Maintenance

— Future Roads and Proposed Roads

Hannah Ridge at Feathergrass F6

Parcels

PLOW AREA 14

Signature: Brad Walters
Brad Walters (Feb 14, 2022 10:08 MST)
Email: bradwalters@elpasoco.com

Signature: Brian Kay
Brian Kay (Jan 31, 2022 20:08 MST)
Email: brian kay@elpasoco.com

Signature: Craig Dossey
Craig Dossey (Jan 26, 2022 14:33 MST)
Email: craigdossey@elpasoco.com