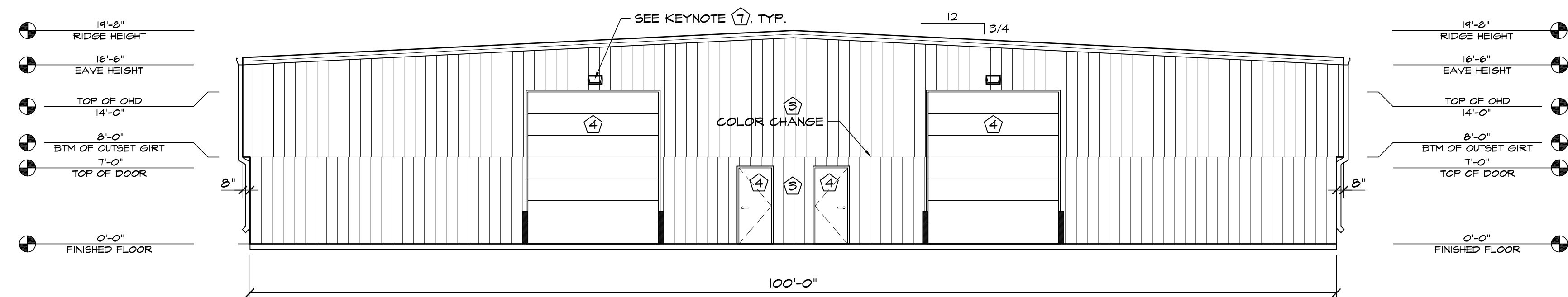
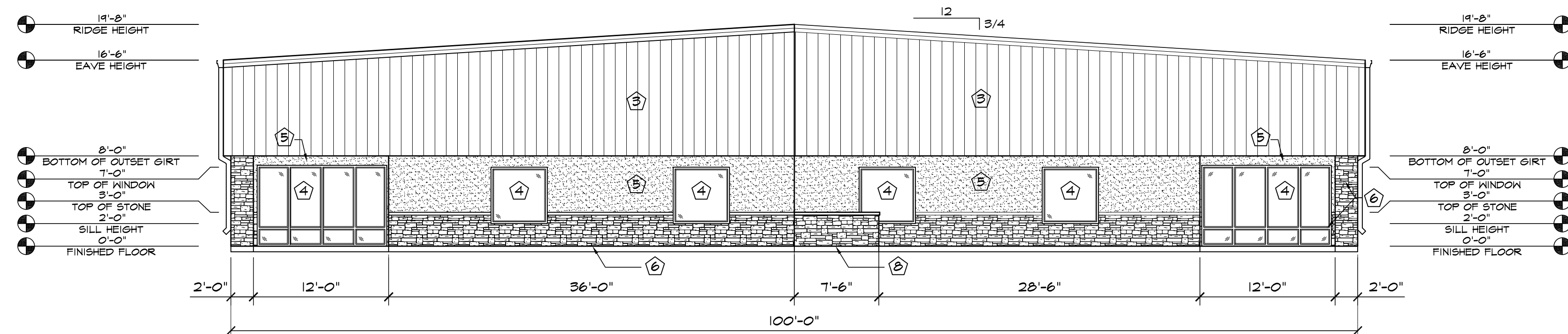


1 SOUTH-WEST ELEVATION
SCALE: 1/8"=1'-0"

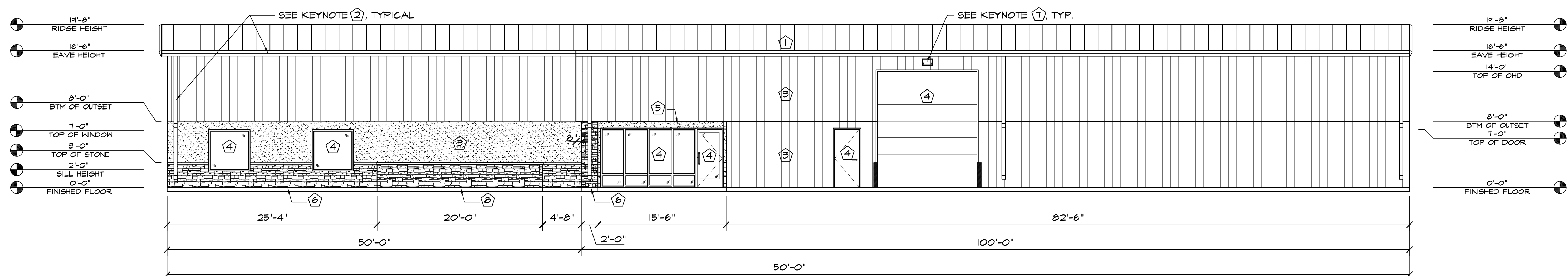


2 NORTH-WEST ELEVATION
SCALE: 1/8"=1'-0"



3 SOUTH-EAST ELEVATION
SCALE: 1/8"=1'-0"

ELEVATION KEY NOTES	
(1)	PREFINISHED 24 GA. "FBR" METAL ROOF PANELS BY METAL BUILDING PROVIDER
(2)	PREFINISHED GUTTER & DOWNSPOUTS BY METAL BUILDING PROVIDER
(3)	PREFINISHED 26 GA. "FBR" METAL WALL PANELS BY METAL BUILDING PROVIDER
(4)	SEE SCHEDULES ON "A" SHEETS FOR ALL DOOR INFORMATION
(5)	3/4" STUCCO FINISH SYS. W/ EXPANSION JOINT-120 SF MAX AREA
(6)	STONE VENEER
(7)	WALL PACK LIGHT TOP OF LIGHT @ 15'-6" A.F.F. SEE ELECT. PLANS
(8)	CONC WALL W/ STONE VENEER - EXTERIOR SIDE ONLY



4 NORTH-EAST ELEVATION
SCALE: 1/8"=1'-0"

HAMMERS
CONSTRUCTION INC.

COMMERCIAL GENERAL CONTRACTORS SPECIALIZING IN DESIGN/BUILD

PRESIDENT: STEVE R. HAMMERS
VICE PRES: DAVID J. HAMMERS
1411 WOOLSEY HEIGHTS
COLORADO SPRINGS, CO 80915
(719) 570-1599 FAX (719) 570-7008
www.hammersconstruction.com

THIS DRAWING CONTAINS MATERIAL & INFORMATION WHICH MAY NOT BE REPRODUCED WITHOUT WRITTEN CONSENT OF HAMMERS CONSTRUCTION, INC. THESE DRAWINGS ARE INTENDED TO BE USED ONLY BY HAMMERS CONSTRUCTION & ITS REPRESENTATIVES. THESE DRAWINGS HAVE NOT BEEN PREPARED FOR ANY OTHER PURPOSE THAN TO INDICATE THE GENERAL FEATURES AND PLACEMENT OF THE PROPOSED PROJECT. COPYRIGHT © 2018 HAMMERS CONSTRUCTION

PAD-2
PADMARK BUSINESS PARK-LOT 2-1
1150 MEADOWBROOK PKWY
COLORADO SPRINGS, CO 80915
EL PASO COUNTY, COLORADO

DATE: MAY 8, 2018
DRAWN BY: L. PETERSON
PROJ. MGR: Z. CRABTREE
SCALE: SEE PLAN
APPROVED BY:
JOB NO: 1059

RESUBMITTALS:

