

## PCD File No. PPR2432

### 6.4.5 Exhibit E Reclamation Plan

Post-mining land use will remain rangeland as approved in the current permit. Final topographical configuration will manifest as a graded mine floor at 6441 ft. elevation with 3H:1V or less sloped sides. The mine floor will be graded to allow for stormwater drainage into the natural drainage ditch in the southeast corner. As mining activity progresses west into the amendment area, reclamation will begin in the mined out east portion of the mine.

Upon completion of mining and processing in a portion of the mine, the mine floor will be graded with a motor grader. The recycle water pond will be backfilled with a bulldozer and graded. Perimeter slopes in the vicinity will be shaped to a slope of 3H:1V or gentler using a bulldozer. The access will remain along with the interior road to the vicinity of the scale house. Other interior haul roads will be ripped and reclaimed.

Topsoil will continue to be salvaged and stockpiled inside the mine for use during reclamation. Topsoil will be replaced to a minimum depth of six inches. The topsoil will be transported from the stockpiles to the target area by dump trucks that are filled using a loader. The topsoil will be distributed using a motor grader.

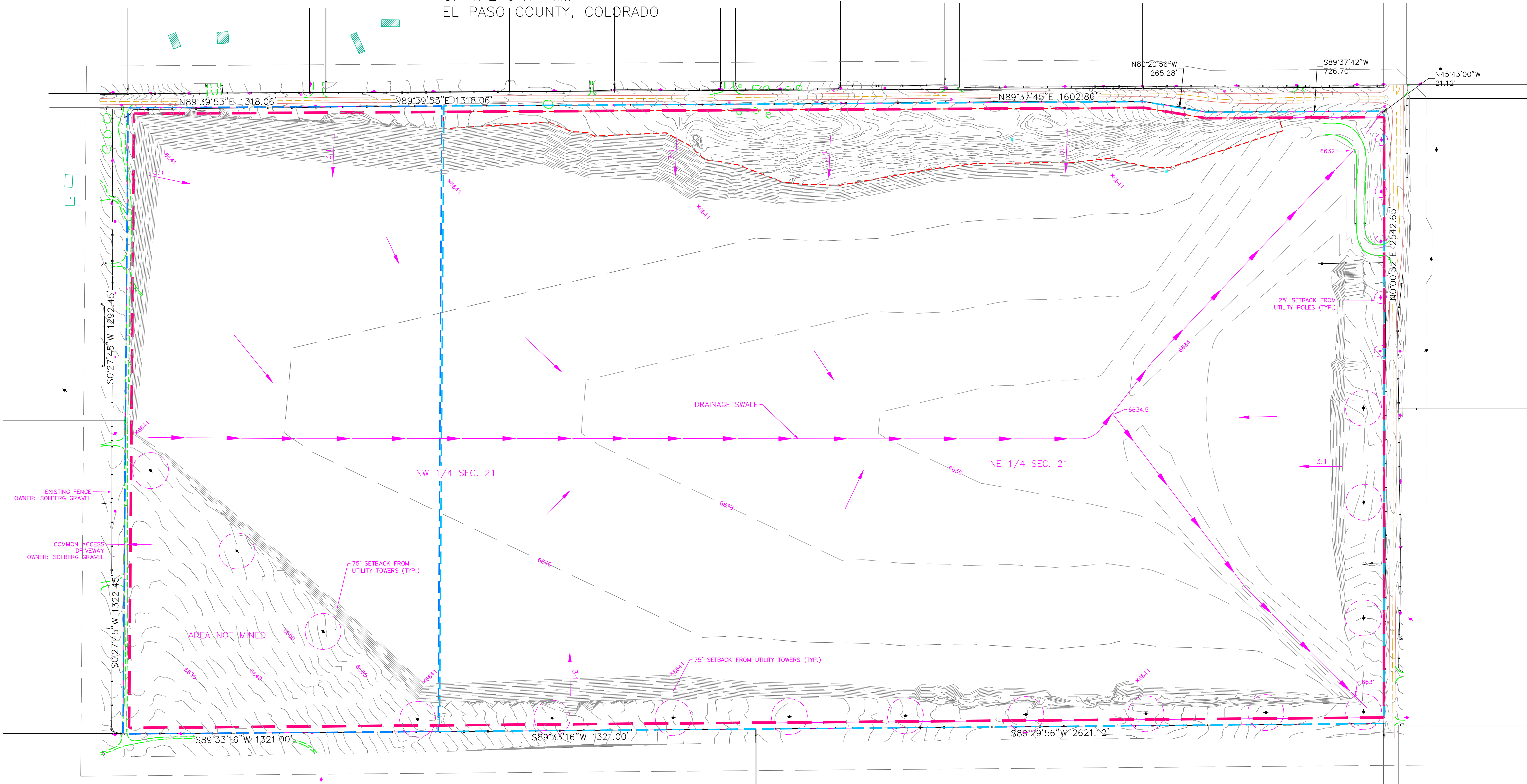
Reseeding will use a hydroseeder. Seeding will occur between October 1 and April 30. The reclamation seed mix is consistent with the 2006 reclamation plan. Revegetation will occur using a hydroseeder and hydromulch with a tacifier, eliminating the need for straw mulch and crimping equipment.

To address the potential for erosion during reclamation, contour furrows will be shaped into the slope at 30 vertical foot intervals down the face of the slope, perpendicular to the slope. The contour furrows will be approximately 20 ft. long and spaced approximately 50 ft. apart.

The reclaimed slopes will be monitored regularly for vegetation success or erosion impacts. Additional erosion control measures will be implemented if necessary. Weed control will be performed if the weed density inhibits the establishment of grasses or if noxious weeds appear in the reclaimed area.

6.4.6 Exhibit F  
Reclamation Plan Map

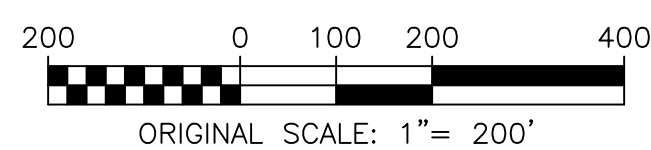
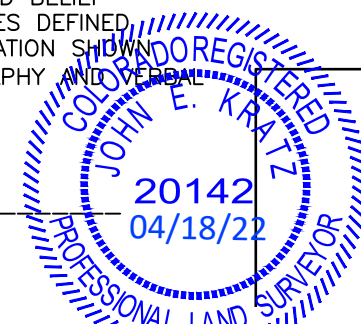
**EXHIBIT F**  
**RECLAMATION PLAN MAP - SOLBERG PIT**  
 SECTION 21, TOWNSHIP 13 SOUTH, RANGE 64 WEST  
 OF THE 6TH P.M.  
 EL PASO COUNTY, COLORADO



--- CURRENT PERMIT BOUNDARY (234 ACRES)  
--- PROPOSED AMENDMENT BOUNDARY (79 ACRES)  
--- AFFECTED AREA BOUNDARY (306 ACRES)  
--- PREVIOUSLY RECLAIMED  
--- EXISTING FENCE  
● TRANSMISSION POLES (NEXTERA ENERGY)  
● DISTRIBUTION POLES (MOUNTAIN VALLEY ELECTRIC)

I, JOHN E. KRATZ, HEREBY CERTIFY THIS EXHIBIT WAS PREPARED UNDER MY DIRECT SUPERVISION AND CHECKING, AND TO THE BEST OF MY KNOWLEDGE AND BELIEF ACCURATELY DEPICTS THE MINE PERMIT AND AFFECTED AREA BOUNDARIES DEFINED HEREIN. THIS EXHIBIT IS NOT A LAND SURVEY PLAT. LAND USE INFORMATION SHOWN HEREON IS FROM FIELD OBSERVATION (JULY 6, 2021), AERIAL TOPOGRAPHY AND REPORT BY OTHERS AND MAY NOT BE ACCURATE AFTER THIS DATE.

*John E. Kratz*



REVISIONS	
NO.	DATE
3	11/09/21
4	11/10/21
5	02/15/22
6	02/23/22
7	4/8/22

SCALE VERIFICATION  
 BAR IS 1" INCH ON ORIGINAL DRAWING  
 1" = 200'  
 IF NOT ONE INCH ON THIS SHEET,  
 IF ADJUST SCALES ACCORDINGLY.  
 REUSE OF DOCUMENT  
 THIS EXHIBIT IS CERTIFIED ONLY TO THE PARTIES NAMED HEREON AND REMAINS THE PROPERTY OF RED ROCK LAND SURVEYS, INC. ANY REUSE OF THIS EXHIBIT FOR ANY OTHER PROJECT OR FOR ANY OTHER PURPOSE WITHOUT THE WRITTEN CONSENT OF RED ROCK LAND SURVEYS, INC. IS PROHIBITED. CORRECT THIS PLAT SHOULD NEW OR UNDISCOVERED FACTS EMERGE. USE OF THIS PLAT BY OTHER THAN CERTIFICATE HOLDER IS AT YOUR OWN RISK.

🔥	FIRE
⚡	LPOLE
⊕	MANHOLE
⊙	SIGN
⚡	UPOLE
+	FENCE
+	MISC
●	TOWER
⊙	PILE
⊙	CULVERT
⊙	ROCK
⊙	IRRIGATION
⊙	MAILBOX
🌳	TREE
➡	TRAFFIC
⊙	RIP-RAP
⊙	POLE-ANCHOR

PREPARED FOR: PIONEER LANDSCAPING MATERIALS, INC.  
 RECLAMATION PLAN MAP  
 SOLBERG GRAVEL, LLC  
 13745 GARRETT ROAD  
 PEYTON, CO 80831