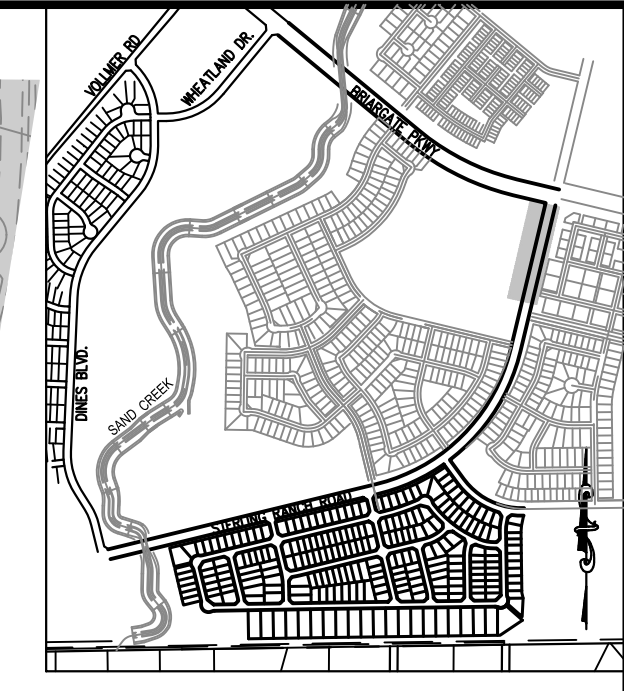
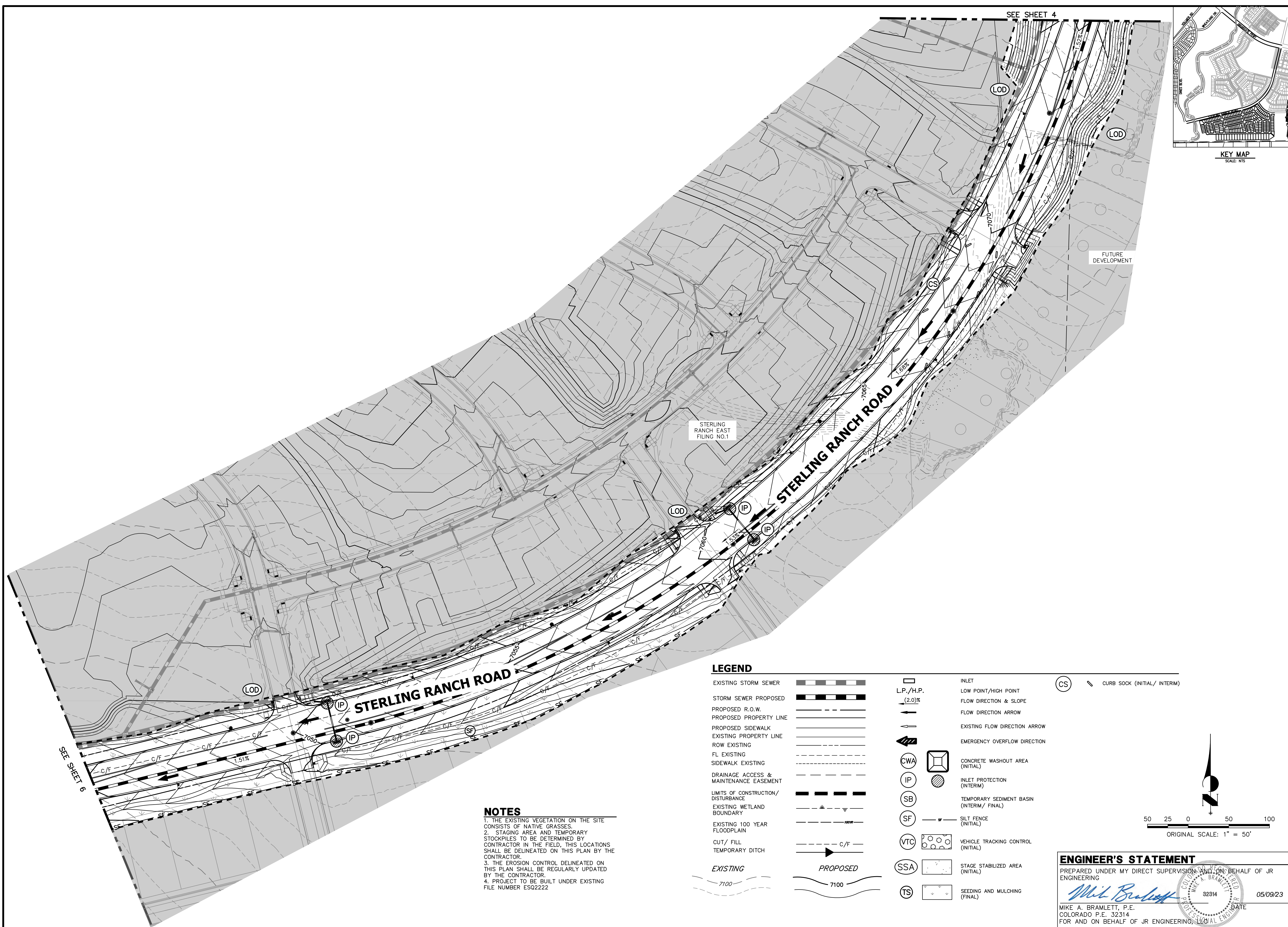


X:\2518000\2518003\Drawings\Sheet\Grading\Sterling Ranch Road and Briargate Parkway GESC.GR_01_SRR and BGP.dwg, GESC (3) 03/02/2023 8:31:01 AM, CS



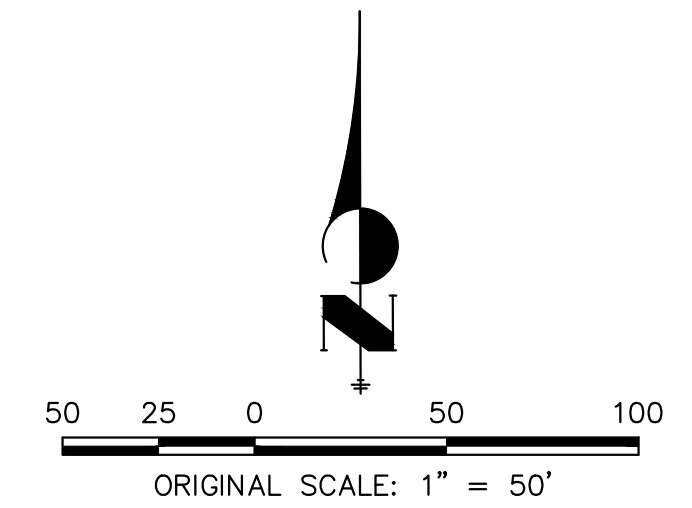
SEE SHEET 6

SEE SHEET 4

NOTES
 1. THE EXISTING VEGETATION ON THE SITE CONSISTS OF NATIVE GRASSES.
 2. STAGING AREA AND TEMPORARY STOCKPILES TO BE DETERMINED BY CONTRACTOR IN THE FIELD, THIS LOCATIONS SHALL BE DELINEATED ON THIS PLAN BY THE CONTRACTOR.
 3. THE EROSION CONTROL DELINEATED ON THIS PLAN SHALL BE REGULARLY UPDATED BY THE CONTRACTOR.
 4. PROJECT TO BE BUILT UNDER EXISTING FILE NUMBER ESQ2222

LEGEND

- | | | | | | | | |
|--|--|-----------|--|-------------------------------|--|------------------------------|--|
| EXISTING STORM SEWER | | L.P./H.P. | | INLET | | CURB SOCK (INITIAL/ INTERIM) | |
| STORM SEWER PROPOSED | | (2.0)% | | LOW POINT/HIGH POINT | | | |
| PROPOSED R.O.W. | | | | FLOW DIRECTION & SLOPE | | | |
| PROPOSED PROPERTY LINE | | | | FLOW DIRECTION ARROW | | | |
| PROPOSED SIDEWALK | | | | EXISTING FLOW DIRECTION ARROW | | | |
| EXISTING PROPERTY LINE | | | | EMERGENCY OVERFLOW DIRECTION | | | |
| ROW EXISTING | | | | | | | |
| FL EXISTING | | | | | | | |
| SIDEWALK EXISTING | | | | | | | |
| DRAINAGE ACCESS & MAINTENANCE EASEMENT | | | | | | | |
| LIMITS OF CONSTRUCTION/DISTURBANCE | | | | | | | |
| EXISTING WETLAND BOUNDARY | | | | | | | |
| EXISTING 100 YEAR FLOODPLAIN | | | | | | | |
| CUT/ FILL TEMPORARY DITCH | | | | | | | |
| EXISTING | | | | | | | |
| PROPOSED | | | | | | | |



ENGINEER'S STATEMENT
 PREPARED UNDER MY DIRECT SUPERVISION AND ON BEHALF OF JR ENGINEERING
 MIKE A. BRAMLETT, P.E.
 COLORADO P.E. 32314
 FOR AND ON BEHALF OF JR ENGINEERING

DATE: 05/09/23

UNTIL SUCH TIME AS THESE DRAWINGS ARE APPROVED BY THE APPROPRIATE REVIEWING AGENCIES, JR ENGINEERING ACCEPTS NO LIABILITY ONLY FOR THE PURPOSES DESIGNATED BY WRITTEN AUTHORIZATION.	
PREPARED FOR	SR LAND, LLC 20 BOULDER CRESCENT SUITE 201 COLORADO SPRINGS, CO 80903 JAMES F. MORLEY (719) 471-1742
 JR ENGINEERING A Western Company Centennial 303-740-9888 • Colorado Springs 719-589-2588 Fort Collins 970-491-9888 • www.jrengineering.com	
BY	DATE
No.	REVISION
1"=60'	N/A
H-SCALE	V-SCALE
DATE	DESIGNED BY
05/09/23	RAB
	DRAWN BY
	CGV
	CHECKED BY
STERLING RANCH ROAD & BRIARGATE PARKWAY SEGMENT 2 GESC	
GRADING AND EROSION CONTROL PLANS	
SHEET 5	OF 9
JOB NO.	25188.03

