

NO.	REVISION	BY	DATE

H-SCALE	1"=50'
V-SCALE	N/A
DATE	03/12/21
DESIGNED BY	JRM
DRAWN BY	JRM
CHECKED BY	

811
Know what's below.
Call before you dig.

ENGINEER'S STATEMENT
PREPARED UNDER MY SUPERVISION

MIKE A. BRAMLETT, P.E.
COLORADO P.E. 32314
FOR AND ON BEHALF OF JR ENGINEERING

REGISTERED PROFESSIONAL ENGINEER
32314
DATE

- GENERAL NOTES:**
1. FOR THE PUBLIC WATER SYSTEM, CHEROKEE RESPONSIBILITY ENDS AT THE MAIN TAP VALVE. SERVICE TO THE BUILDINGS IS THE OWNER'S RESPONSIBILITY.
 2. ALL WATER AND SEWER MAINS ARE PUBLIC WATER. AS SUCH THE OWNER, NOT THE DISTRICT, IS RESPONSIBLE FOR PAVEMENT MAINTENANCE IF REPAIRS ARE NEEDED.

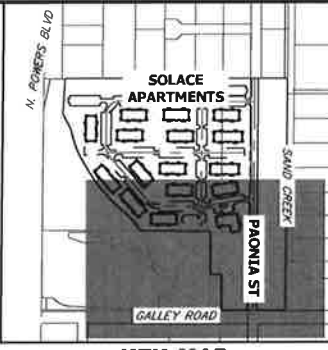
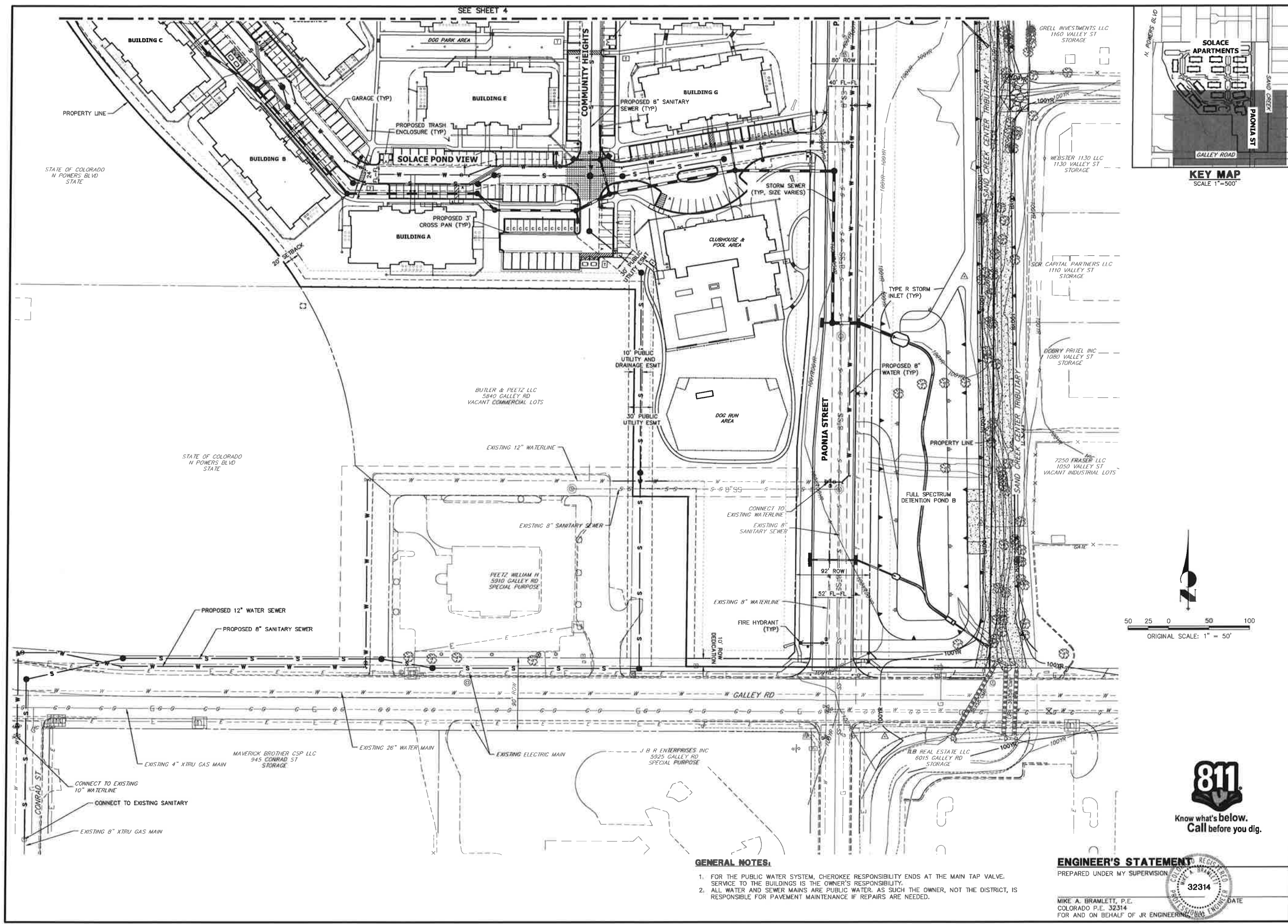
UNLESS SUCH TIME AS APPROVED BY THE APPROPRIATE REVIEWING AGENCIES, JR ENGINEERING APPROVES THEIR USE ONLY FOR THE PURPOSES AUTHORIZED BY WRITTEN AUTHORIZATION.

PREPARED FOR
JACKSON DEARBORN PARTNERS
404 S. WELLS ST.
SUITE 400
CHICAGO, ILL 60607
OFFICE PHONE (734) 216-2577

JR ENGINEERING
A Westman Company
Central 303-740-9933 • Colorado Springs 719-539-2938
Fort Collins 970-484-9988 • www.jrengineering.com

SOLACE AT CIMARRON HILLS - FILING NO. 1
SITE AND OVERALL UTILITY PLAN

SHEET 4 OF 28
JOB NO. 25174.00



GENERAL NOTES.

1. FOR THE PUBLIC WATER SYSTEM, CHEROKEE RESPONSIBILITY ENDS AT THE MAIN TAP VALVE. SERVICE TO THE BUILDINGS IS THE OWNER'S RESPONSIBILITY.
2. ALL WATER AND SEWER MAINS ARE PUBLIC WATER, AS SUCH THE OWNER, NOT THE DISTRICT, IS RESPONSIBLE FOR PAVEMENT MAINTENANCE IF REPAIRS ARE NEEDED.

ENGINEER'S STATEMENT

PREPARED UNDER MY SUPERVISION

MIKE A. BRAMLETT, P.E.
 COLORADO P.E. 32314
 FOR AND ON BEHALF OF JR ENGINEERING



UNTIL SUCH TIME AS APPROVED BY THE APPROPRIATE REVIEWING AGENCIES, JR ENGINEERING APPROVES THEIR USE ONLY FOR THE PURPOSES AUTHORIZED BY WRITTEN AUTHORIZATION.	
PREPARED FOR JACKSON DEARBORN PARTNERS 404 S. WELLS ST. SUITE 400 CHICAGO, ILL 60607 OFFICE PHONE (734) 216-2577	J.R. ENGINEERING A Westman Company Centennial 303-740-0083 • Colorado Springs 719-539-2838 Fort Collins 970-491-9888 • www.jrengineering.com
NO. REVISION 1 1"=50' 2 N/A 3 03/12/21	BY DATE DESIGNED BY JRM DRAWN BY JRM CHECKED BY
SOLACE AT CIMARRON HILLS - FILING NO. 1 SITE AND OVERALL UTILITY PLAN	
SHEET 5 OF 28 JOB NO. - 25174.00	