

T-BONE CONSTRUCTION, INC.  
1230 AINSWORTH ST  
CODE 200 AT PRESENT NORTH

Typical fire and water service lines labels added. Please also see water specific construction plans submitted with this package twice.

3 Label Service & FIRE LINES & PROVIDE PIPE SIZE & MATERIAL

Noted. Please also see sanitary specific construction plans submitted with this package twice.

1 SHOW SANITARY SEWER CONNECTION TO BLDG.

2 IF PUBLIC SANITARY WATER & SEWER SYSTEMS SUBMIT PIPE PROFILES W/ CROSSING DETAILS

Public. Please also see sanitary specific construction plans submitted with this package. These include all profiles and crossing details.

NOTE 1 ADDED TO BOTTOM OF THE PAGE REFLECTING PUBLIC/ PRIVATE TRANSITION

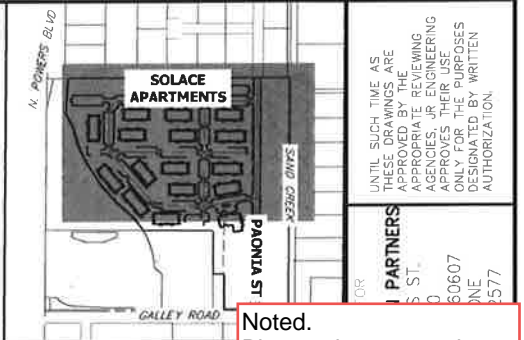
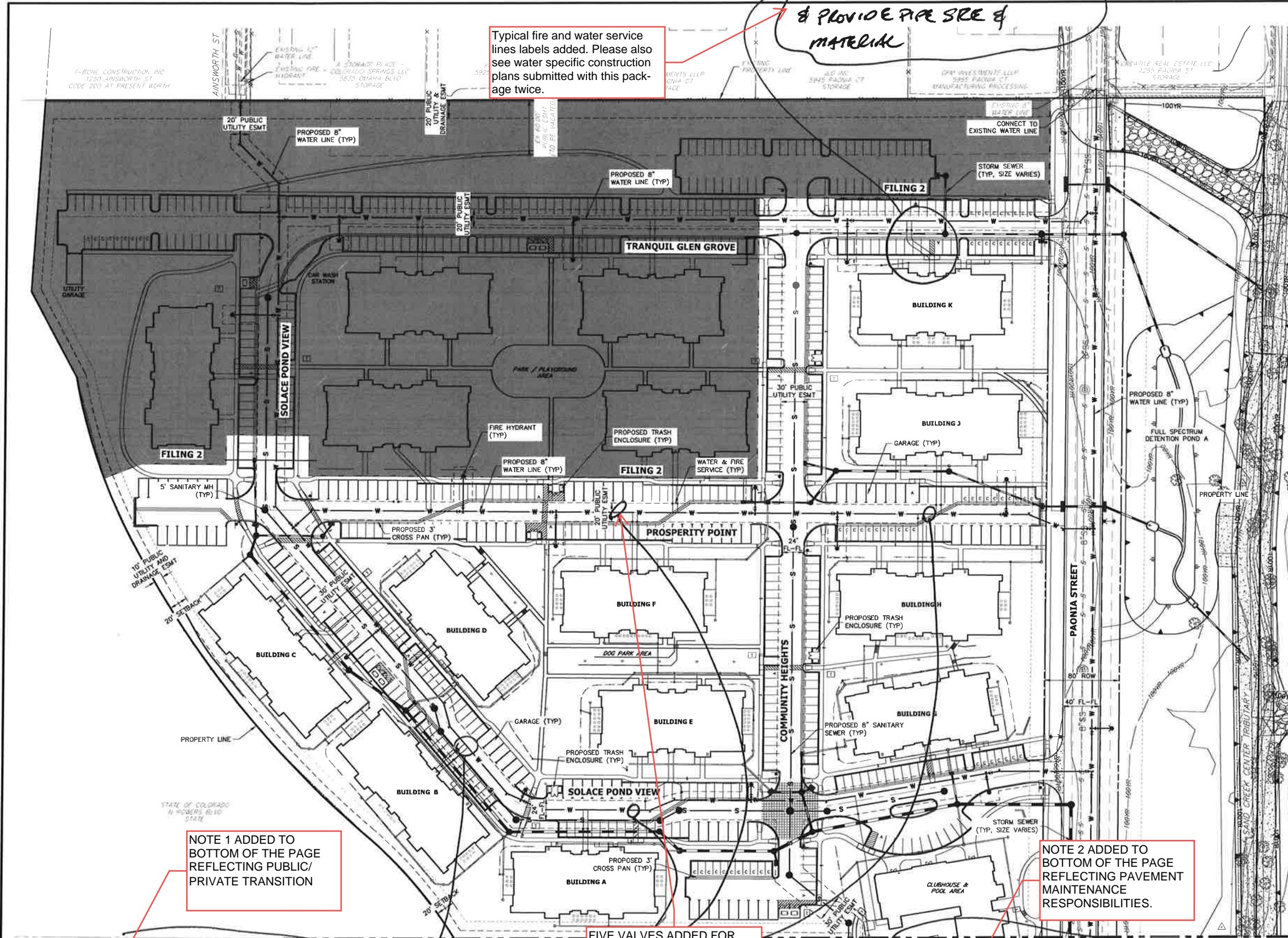
NOTE 2 ADDED TO BOTTOM OF THE PAGE REFLECTING PAVEMENT MAINTENANCE RESPONSIBILITIES.

FIVE VALVES ADDED FOR INDIVIDUAL BUILDING SERVICE ISOLATION.

4 IF PUBLIC WATER SYSTEM ADD NOTE THAT CHEROKEE RESPONSIBILITY ENDS AT MAIN TRAP VALVE - SERVICE TO BLDG IS OWNER'S RESPONSIBILITY

5 ADD VALVES TO ISOLATE BUILDINGS

6 IF PUBLIC WATER & SANITARY SYSTEMS- ADD NOTE THAT OWNER RESPONSIBLE FOR PAVEMENT REPLACEMENT IF REPAIRS ARE NEEDED



KEY MAP  
SCALE 1" = 500'

50 25 0 50 100  
ORIGINAL SCALE: 1" = 50'

UNTIL SUCH TIME AS THESE DRAWINGS ARE APPROVED BY THE APPROPRIATE ENGINEERING AGENCIES, JR ENGINEERING APPROVES THEIR USE ONLY FOR THE PURPOSES DESIGNATED BY WRITTEN AUTHORIZATION.

JR ENGINEERING  
A Weitzman Company  
Colorado 303-440-8888 • Colorado Springs 719-599-2888  
For Calls 970-451-8888 • www.jrengineering.com

NO.	REVISION	DATE	DESIGNED BY	DRAWN BY	CHECKED BY
1					



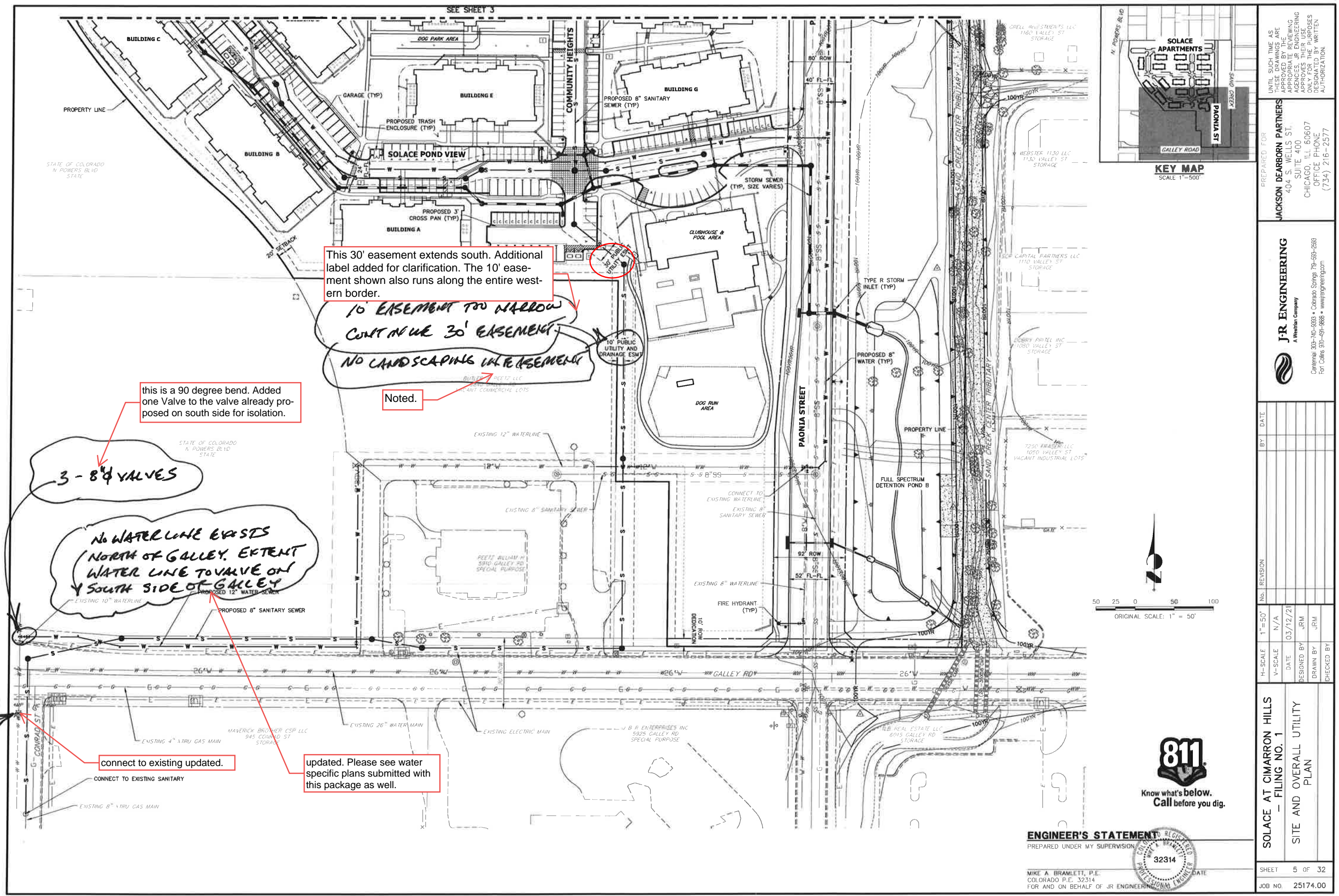
Know what's below.  
Call before you dig.

ENGINEER'S STATEMENT  
PREPARED UNDER MY SUPERVISION



MIKE A. BRAMLETT, P.E.  
COLORADO P.E. 32314  
FOR AND ON BEHALF OF JR ENGINEERING

SOLACE AT CIMARRON HILLS  
- FILING NO. 1  
SITE AND OVERALL UTILITY PLAN  
SHEET 4 OF 32  
JOB NO. 25174.00



This 30' easement extends south. Additional label added for clarification. The 10' easement shown also runs along the entire western border.

10' EASEMENT TOO NARROW CONTINUE THE 30' EASEMENT NO LANDSCAPING IN EASEMENT

Noted.

this is a 90 degree bend. Added one Valve to the valve already proposed on south side for isolation.

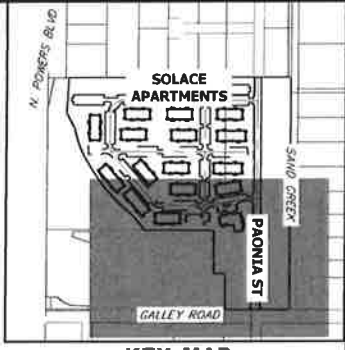
3 - 8" VALVES

No WATER LINE EXISTS NORTH OF GALLEY. EXTEND WATER LINE TO VALVE ON SOUTH SIDE OF GALLEY

CONNECT TO EXIST VALVE

connect to existing updated.

updated. Please see water specific plans submitted with this package as well.



**ENGINEER'S STATEMENT**  
 PREPARED UNDER MY SUPERVISION  
 32314  
 MIKE A. BRAMLETT, P.E.  
 COLORADO P.E. 32314  
 FOR AND ON BEHALF OF JR ENGINEERING

UNTIL SUCH TIME AS THESE DRAWINGS ARE CANCELLED OR REVISED BY THE ENGINEERING AGENCIES, JR ENGINEERING APPROVES THEIR USE ONLY FOR THE PURPOSES DESIGNATED BY WRITTEN AUTHORIZATION.	
PREPARED FOR <b>JACKSON DEARBORN PARTNERS</b> 404 S. WELLS ST. SUITE 400 CHICAGO, ILL 60607 OFFICE PHONE (734) 216-2577	PREPARED BY <b>JR ENGINEERING</b> A Weithman Company 303-740-0888 • Colorado Springs 719-552-2883 Fort Collins 970-491-8888 • www.jrengineering.com
No. REVISION H-SCALE 1"=50' V-SCALE N/A DATE 03/12/21 DESIGNED BY JRM DRAWN BY JRM CHECKED BY	BY DATE No. REVISION H-SCALE 1"=50' V-SCALE N/A DATE 03/12/21 DESIGNED BY JRM DRAWN BY JRM CHECKED BY
<b>SOLACE AT CIMARRON HILLS - FILING NO. 1</b> <b>SITE AND OVERALL UTILITY PLAN</b>	
SHEET 5 OF 32 JOB NO. 25174.00	