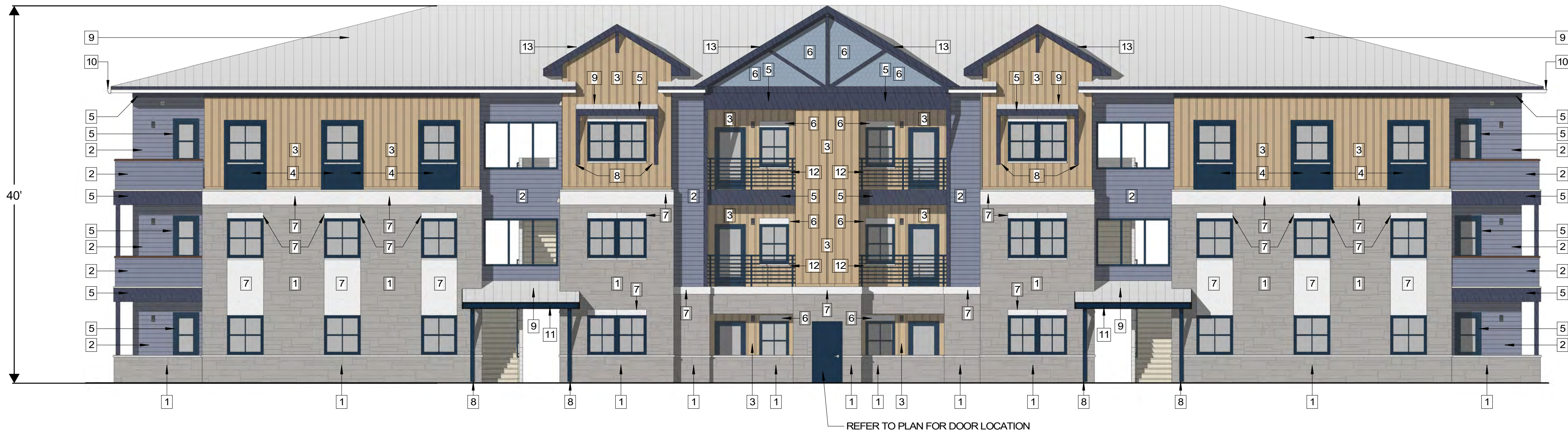




2 BLDG I - SIDE ELEVATION

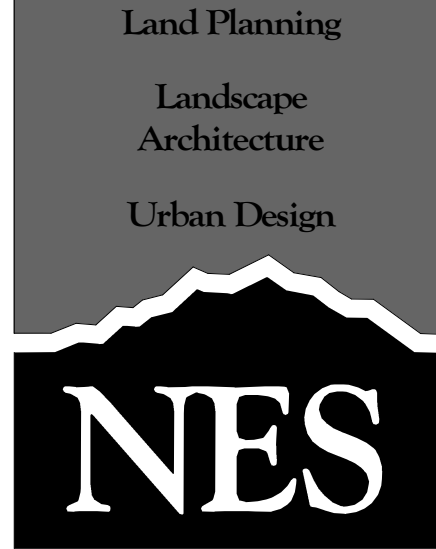
SCALE: 1/8" = 1'-0"

EXTERIOR FINISH KEY					
NO.	MATERIAL	NO.	MATERIAL	NO.	MATERIAL
1	STONE PANEL SIDING & SILL B.O.D.: VERSETTA STONE COLOR: xxx	4	FIBER CEMENT BD SIDING (B.O.D.: HARDIE REVEAL PANEL SYSTEM COLOR: XX	7	EIFS BAND COLOR: XX
2	FIBER CEMENT BD (LAP SIDING) B.O.D.: HARDIEPLANK COLOR: XX	5	FIBER CEMENT BD (TRIM) B.O.D.: HARDIETRIM COLOR: XX	8	ROOF BRACKETS B.O.D.: PRE-FABRICATED COLOR: DARK GREY
3	FIBER CEMENT BD (VERTICAL SIDING) B.O.D.: HARDIEPANEL COLOR: XX	6	FIBER CEMENT BD (SHINGLE) B.O.D.: HARDIESHINGLE COLOR: XX	9	STANDING SEAM METAL CANOPY B.O.D.: COLOR: LIGHT GREY
				10	MTL GUTTER & DOWNSPOUT COLOR: DARK GREY
				11	PRE-FINISHED MTL TRIM @ FLASHING COLOR: XX
				12	BALCONY GUARDRAILS COLOR: DARK GREY
				13	PVC FASCIA TRIM BOARD COLOR: XX



1 BLDG I - FRONT & REAR ELEVATION

SCALE: 1/8" = 1'-0"



N.E.S. Inc.
619 N. Cascade Avenue, Suite 200
Colorado Springs, CO 80903

Tel. 719.471.0073
Fax 719.471.0267

www.nescolorado.com

© 2012. All Rights Reserved.

OWNER / DEVELOPER:
JACKSON DEARBORN, LLC
404 S. WELLS STREET
SUITE # 400
CHICAGO, IL 60607
CONTACT: DIANE OLIMSTEAD
TEL: 734.216.2577

ARCHITECT:
LCM ARCHITECTS
819 SOUTH WABASH AVE
FIFTH FLOOR
CHICAGO, IL 60605
TEL: 312.913.1717

CIVIL ENGINEER:
JR ENGINEERING
5475 TECH CENTER DRIVE
SUITE # 235
COLORADO SPRINGS, CO 80919
CONTACT: MIKE BRAMBLETT
TEL: 303.267.6240

STRUCTURAL ENGINEER:
MARTINO & LUTH, INC
999 18TH STREET
SUITE 855 NORTH
DENVER, CO 80202
TEL: 303.260.7118

MEP ENGINEER:
SALAS O'BRIEN
815 SOUTH WABASH AVENUE
CHICAGO, IL 60605
TEL: 312.786.4310

SOLACE APARTMENTS

SITE DEVELOPMENT PLAN

DATE: 11/19/2020
PROJECT MGR: PROJECT MGR
PREPARED BY: PREPARED BY

NOT FOR CONSTRUCTION

ISSUE TYPE

DATE: BY: DESCRIPTION:

TYPE I BUILDING - EXTERIOR FINISHES

A3.10
23 OF 28



2 BUILDING II - SIDE ELEVATION

SCALE: 1/8" = 1'-0"

EXTERIOR FINISH KEY									
NO.	MATERIAL	NO.	MATERIAL	NO.	MATERIAL	NO.	MATERIAL	NO.	MATERIAL
1	STONE PANEL SIDING & SILL B.O.D.: VERSETTA STONE COLOR: xxx	4	FIBER CEMENT BD SIDING (B.O.D.: HARDIE REVEAL PANEL SYSTEM COLOR: XX	7	EIFS BAND COLOR: XX	10	MTL GUTTER & DOWNSPOUT COLOR: DARK GREY	13	PVC FASCIA TRIM BOARD COLOR: XX
2	FIBER CEMENT BD (LAP SIDING) B.O.D.: HARDIEPLANK COLOR: XX	5	FIBER CEMENT BD (TRIM) B.O.D.: HARDIETRIM COLOR: XX	8	ROOF BRACKETS B.O.D.: PRE-FABRICATED COLOR: DARK GREY	11	PRE-FINISHED MTL TRIM @ FLASHING COLOR: XX		
3	FIBER CEMENT BD (VERTICAL SIDING) B.O.D.: HARDIEPANEL COLOR: XX	6	FIBER CEMENT BD (SHINGLE) B.O.D.: HARDIESHINGLE COLOR: XX	9	STANDING SEAM METAL CANOPY B.O.D.: COLOR: LIGHT GREY	12	BALCONY GUARDRAILS COLOR: DARK GREY		



1 BUILDING II - FRONT & REAR ELEVATIONS

SCALE: 1/8" = 1'-0"

Land Planning
Landscape
Architecture
Urban Design



N.E.S. Inc.
619 N. Cascade Avenue, Suite 200
Colorado Springs, CO 80903

Tel. 719.471.0073
Fax 719.471.0267

www.nescolorado.com

© 2012. All Rights Reserved.

OWNER / DEVELOPER:
JACKSON DEARBORN, LLC

404 S. WELLS STREET
SUITE # 400
CHICAGO, IL 60607
CONTACT: DIANE OLIMSTEAD
TEL: 734.216.2577

ARCHITECT:
LCM ARCHITECTS
819 SOUTH WABASH AVE
FIFTH FLOOR
CHICAGO, IL 60605
TEL: 312.913.1717

CIVIL ENGINEER:
JR ENGINEERING
5475 TECH CENTER DRIVE
SUITE # 235
COLORADO SPRINGS, CO 80919
CONTACT: MIKE BRAMBLETT
TEL: 303.267.6240

STRUCTURAL ENGINEER:
MARTINO & LUTH, INC
999 18TH STREET
SUITE 855 NORTH
DENVER, CO 80202
TEL: 303.260.7118

MEP ENGINEER:
SALAS O'BRIEN
815 SOUTH WABASH AVENUE
CHICAGO, IL 60605
TEL: 312.786.4310

**SOLACE
APARTMENTS**

SITE DEVELOPMENT
PLAN

DATE: 11/19/2020
PROJECT MGR: PROJECT MGR
PREPARED BY: PREPARED BY

NOT FOR
CONSTRUCTION

ISSUE TYPE

DATE: BY: DESCRIPTION:

**TYPE II BUILDING -
EXTERIOR FINISHES**

A3.11

24 OF 28



2 BUILDING III - SIDE ELEVATION

SCALE: 1/8" = 1'-0"

EXTERIOR FINISH KEY									
NO.	MATERIAL	NO.	MATERIAL	NO.	MATERIAL	NO.	MATERIAL	NO.	MATERIAL
1	STONE PANEL SIDING & SILL B.O.D.: VERSETTA STONE COLOR: xxx	4	FIBER CEMENT BD SIDING (B.O.D.: HARDIE REVEAL PANEL SYSTEM COLOR: XX	7	EIFS BAND COLOR: XX	10	MTL GUTTER & DOWNSPOUT COLOR: DARK GREY	13	PVC FASCIA TRIM BOARD COLOR: XX
2	FIBER CEMENT BD (LAP SIDING) B.O.D.: HARDIEPLANK COLOR: XX	5	FIBER CEMENT BD (TRIM) B.O.D.: HARDIETRIM COLOR: XX	8	ROOF BRACKETS B.O.D.: PRE-FABRICATED COLOR: DARK GREY	11	PRE-FINISHED MTL TRIM @ FLASHING COLOR: XX		
3	FIBER CEMENT BD (VERTICAL SIDING) B.O.D.: HARDIEPANEL COLOR: XX	6	FIBER CEMENT BD (SHINGLE) B.O.D.: HARDIESHINGLE COLOR: XX	9	STANDING SEAM METAL CANOPY B.O.D.: COLOR: LIGHT GREY	12	BALCONY GUARDRAILS COLOR: DARK GREY		



1 BUILDING III - FRONT & REAR ELEVATIONS

SCALE: 1/8" = 1'-0"

Land Planning
Landscape
Architecture
Urban Design

NES

N.E.S. Inc.
619 N. Cascade Avenue, Suite 200
Colorado Springs, CO 80903

Tel. 719.471.0073
Fax 719.471.0267

www.nescolorado.com

© 2012. All Rights Reserved.

OWNER / DEVELOPER:
JACKSON DEARBORN, LLC
404 S. WELLS STREET
SUITE # 400
CHICAGO, IL 60607
CONTACT: DIANE OLIMSTEAD
TEL: 734.216.2577

ARCHITECT:
LCM ARCHITECTS
819 SOUTH WABASH AVE
FIFTH FLOOR
CHICAGO, IL 60605
TEL: 312.913.1717

CIVIL ENGINEER:
JR ENGINEERING
5475 TECH CENTER DRIVE
SUITE # 235
COLORADO SPRINGS, CO 80919
CONTACT: MIKE BRAMBLETT
TEL: 303.267.6240

STRUCTURAL ENGINEER:
MARTINO & LUTH, INC
999 18TH STREET
SUITE 855 NORTH
DENVER, CO 80202
TEL: 303.260.7118

MEP ENGINEER:
SALAS O'BRIEN
815 SOUTH WABASH AVENUE
CHICAGO, IL 60605
TEL: 312.786.4310

SOLACE
APARTMENTS

SITE DEVELOPMENT
PLAN

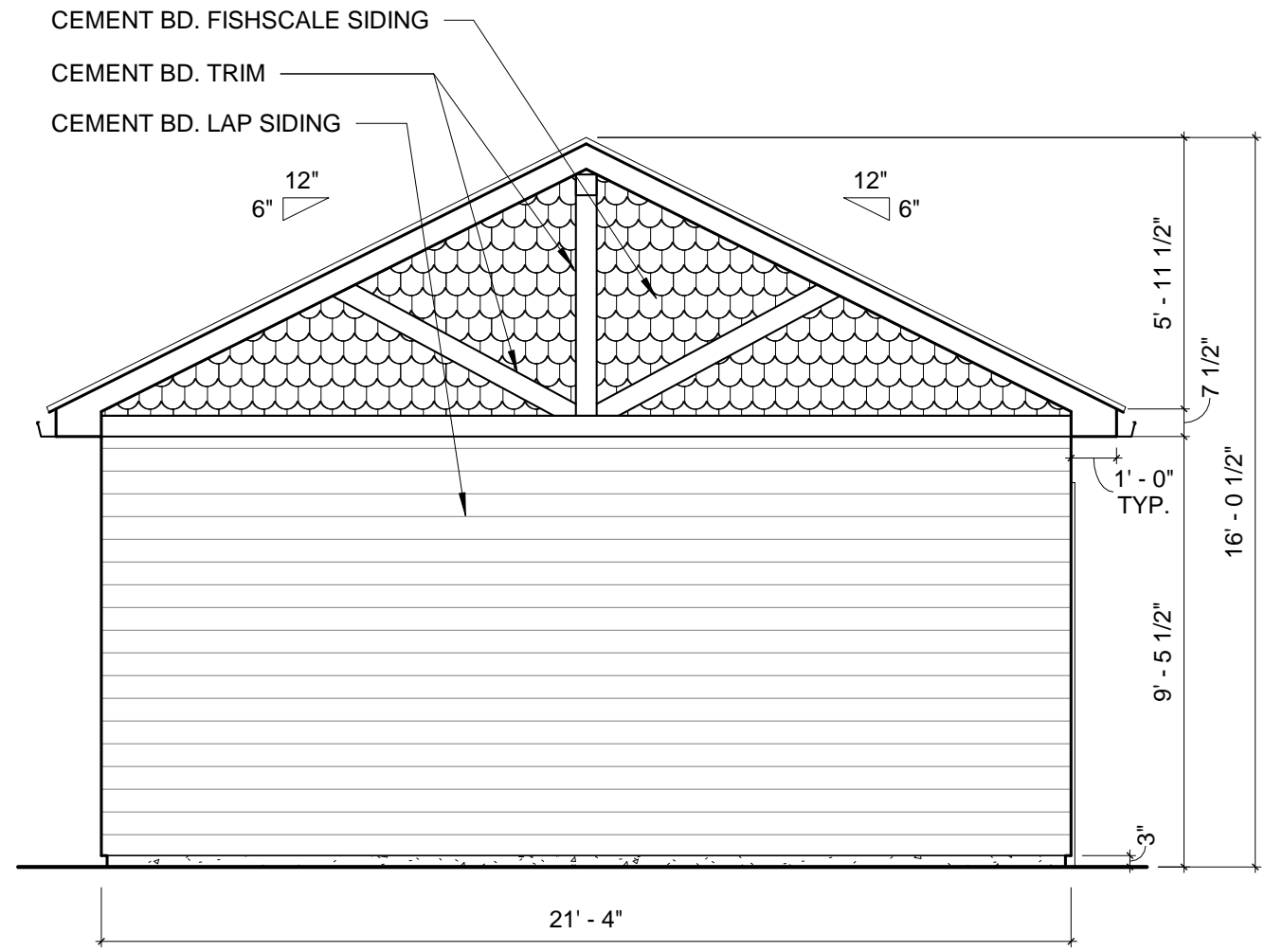
DATE: 11/19/2020
PROJECT MGR: PROJECT MGR
PREPARED BY: PREPARED BY

NOT FOR
CONSTRUCTION

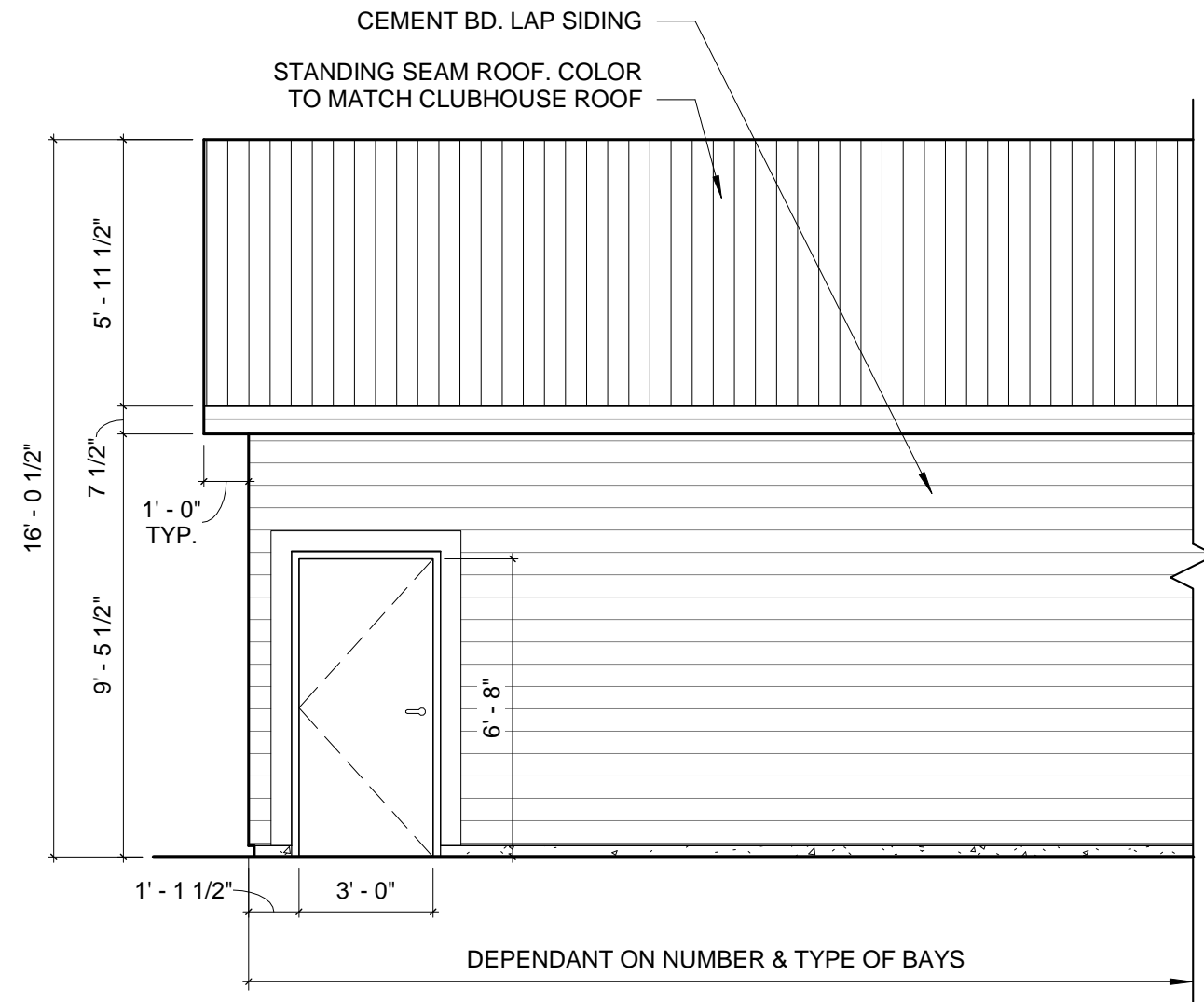
ISSUE TYPE		
DATE:	BY:	DESCRIPTION:

TYPE III BUILDING -
EXTERIOR FINISHES

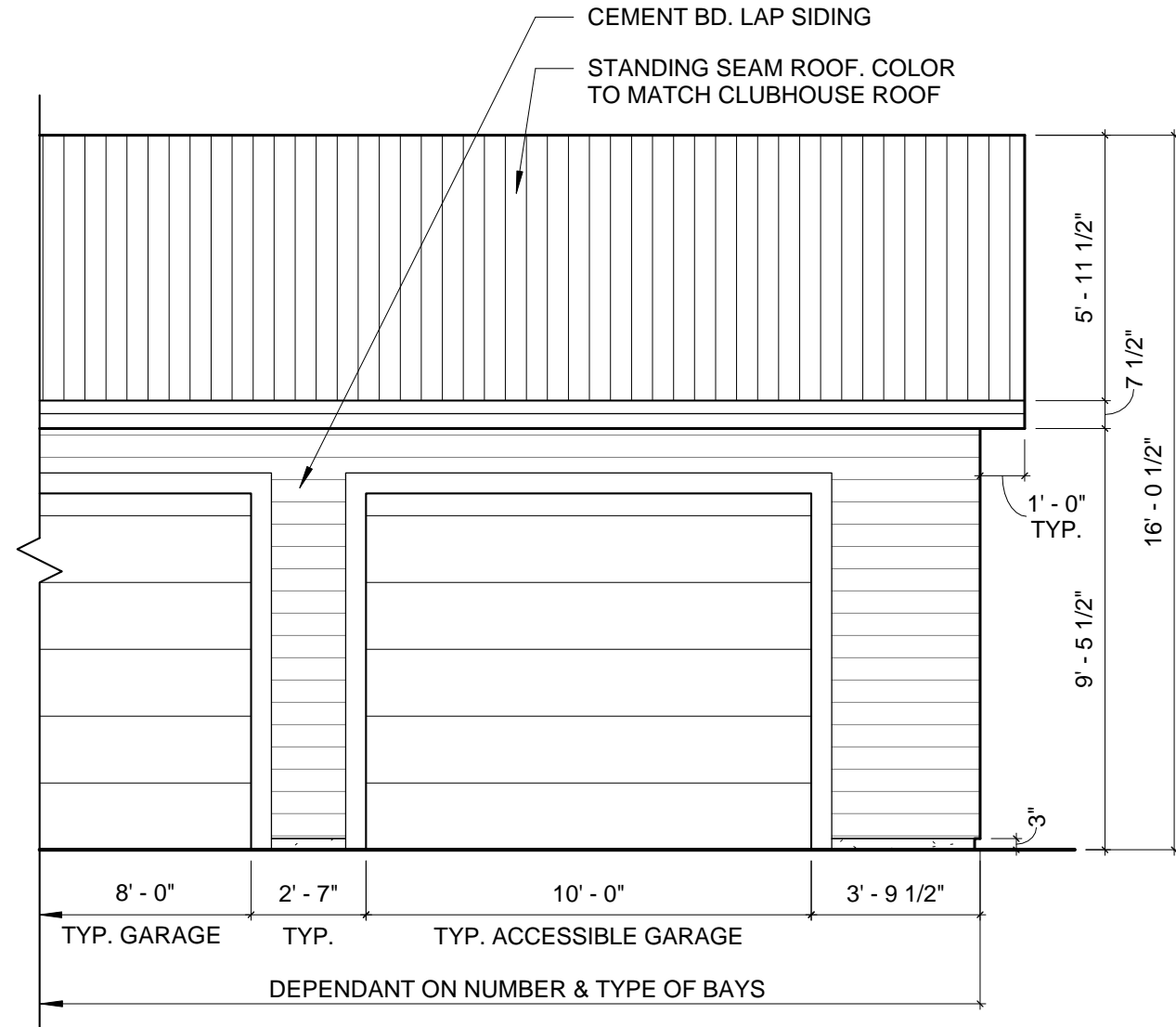
A3.12
25 OF 28



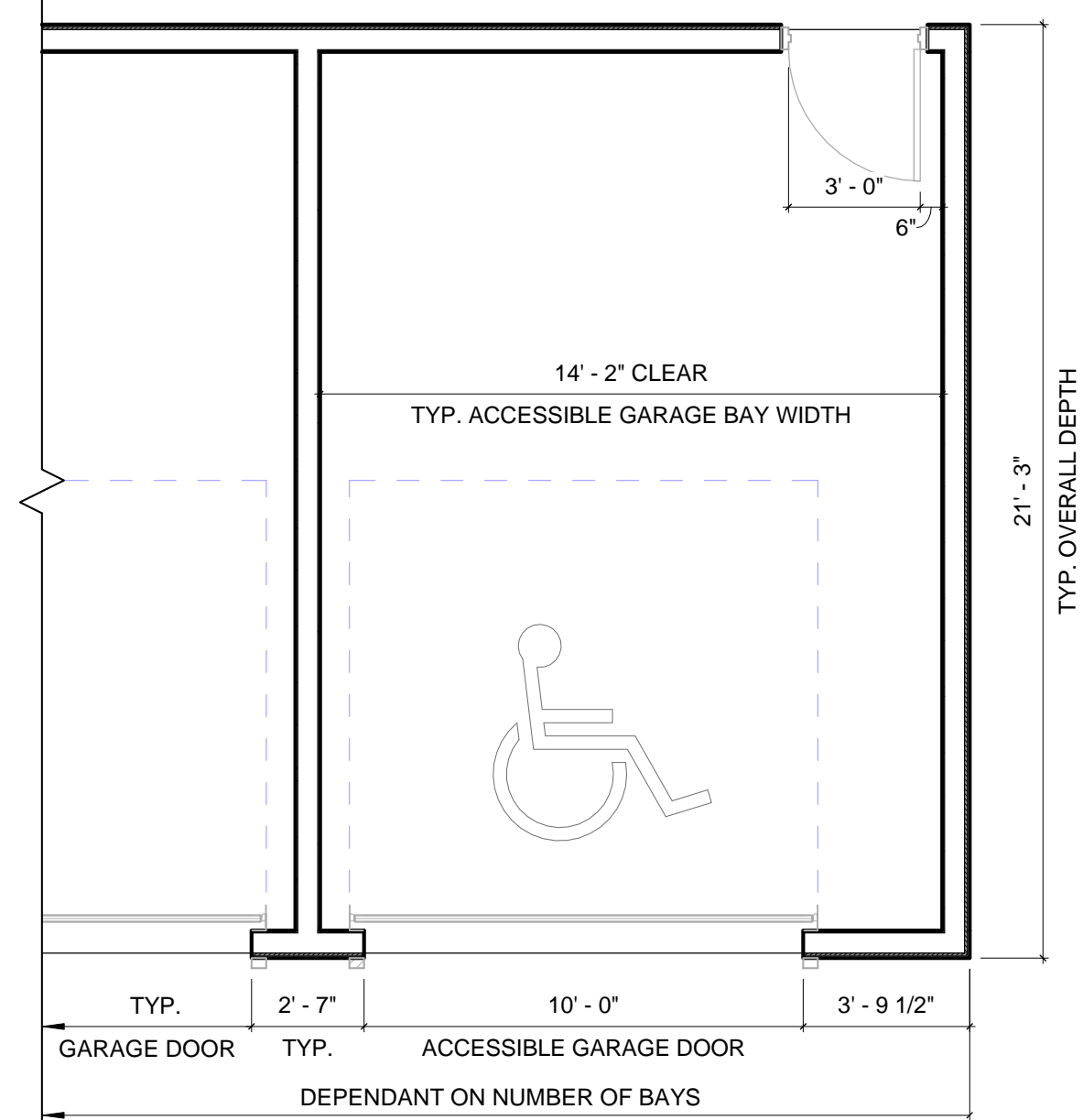
5 TYP. ELEVATION - SIDE
SCALE: 1/4" = 1'-0"



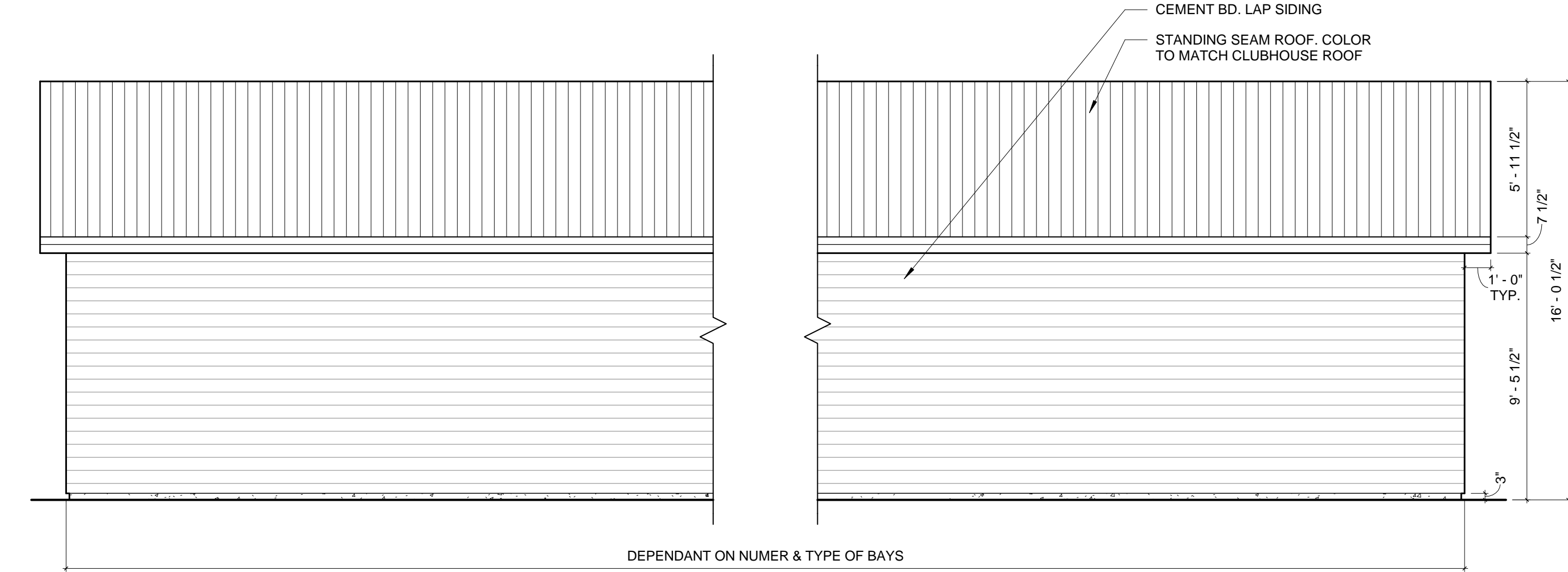
7 TYP. ELEVATION - BACK
(WITH ACCESSIBLE GARAGE)
SCALE: 1/4" = 1'-0"



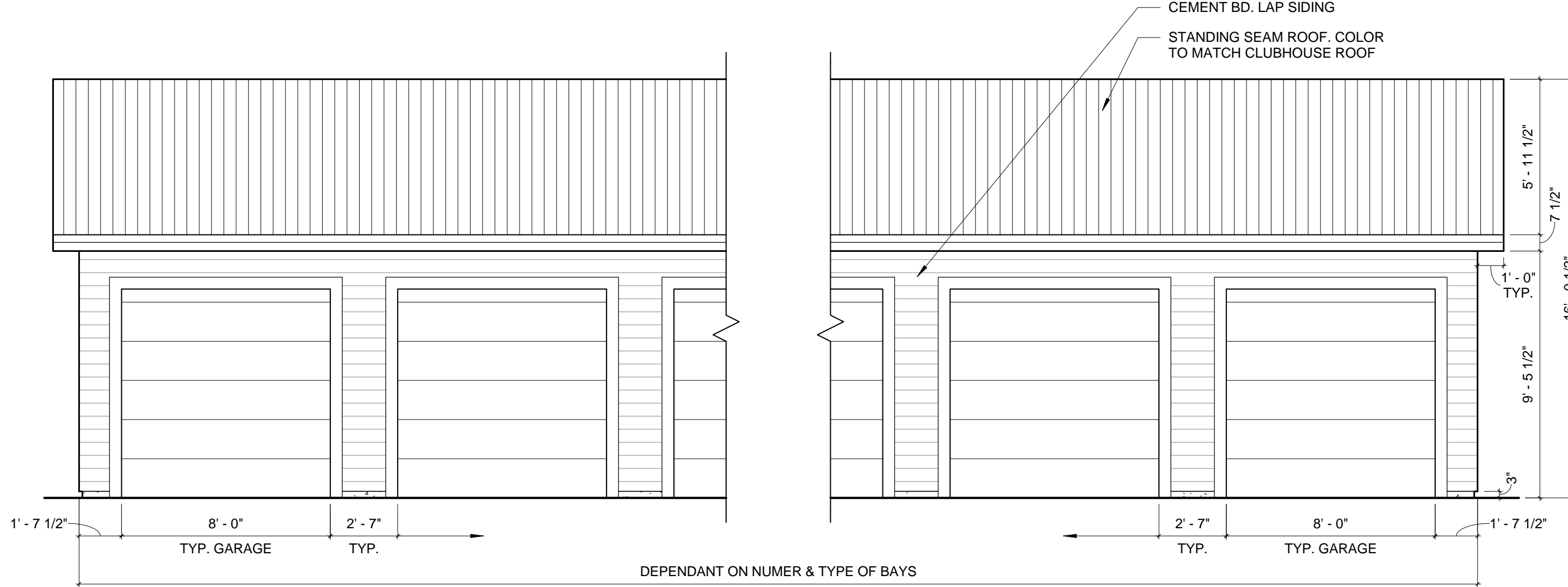
4 TYP. ELEVATION - FRONT
(WITH ACCESSIBLE GARAGE)
SCALE: 1/4" = 1'-0"



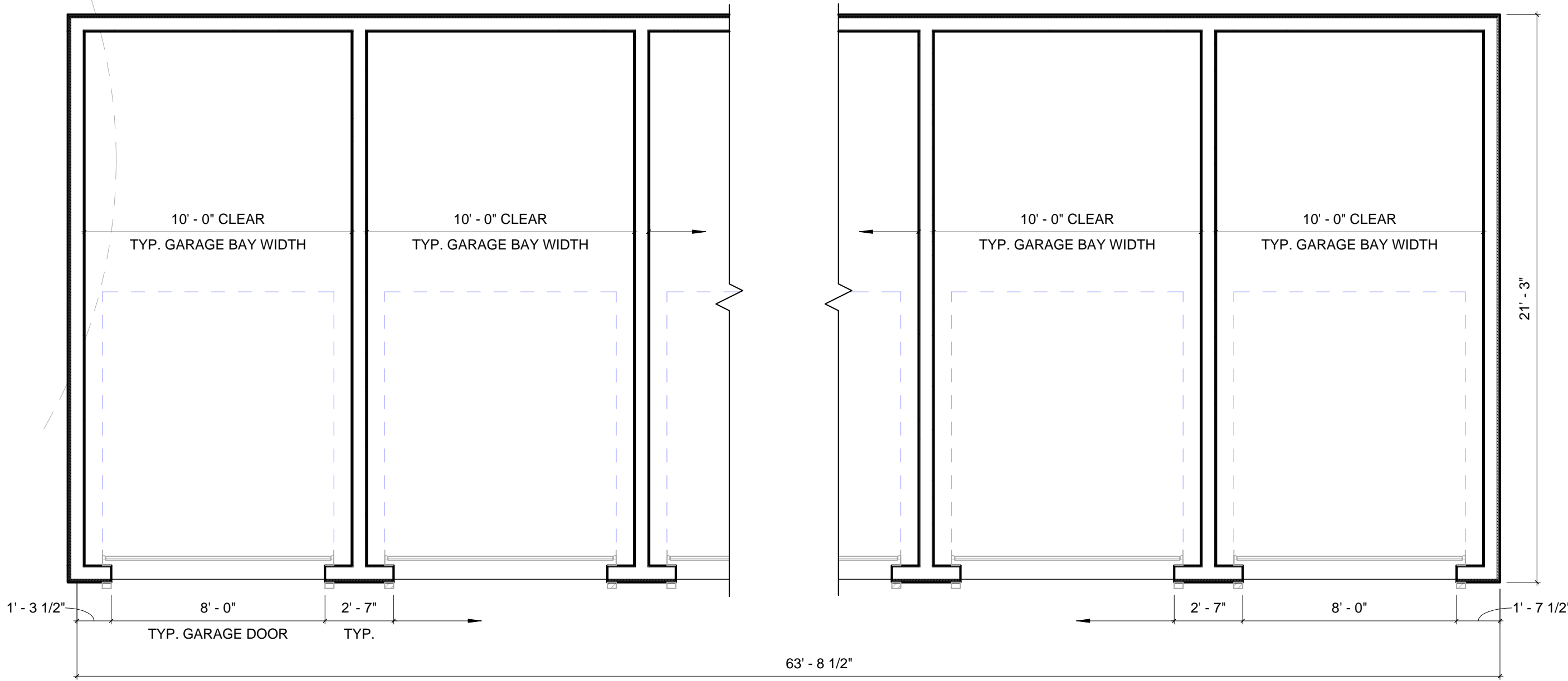
2 TYP. ACCESSIBLE GARAGE PLAN
SCALE: 1/4" = 1'-0"



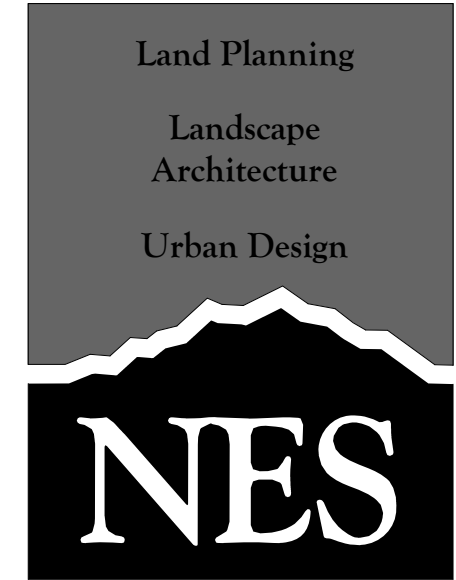
6 TYP. ELEVATION - BACK
SCALE: 1/4" = 1'-0"



3 TYP. ELEVATION - FRONT
SCALE: 1/4" = 1'-0"



1 TYP. GARAGE PLAN
SCALE: 1/4" = 1'-0"



N.E.S. Inc.
619 N. Cascade Avenue, Suite 200
Colorado Springs, CO 80903
Tel. 719.471.0073
Fax 719.471.0267
www.nescolorado.com
© 2012. All Rights Reserved.

OWNER / DEVELOPER:
JACKSON DEARBORN, LLC
404 S. WELLS STREET
SUITE # 400
CHICAGO, IL 60607
CONTACT: DANE OLIMSTEAD
TEL: 734.216.2577

ARCHITECT:
LCM ARCHITECTS
819 SOUTH WABASH AVE
FIFTH FLOOR
CHICAGO, IL 60605
TEL: 312.913.1717

CIVIL ENGINEER:
JR ENGINEERING
5475 TECH CENTER DRIVE
SUITE # 235
COLORADO SPRINGS, CO 80919
CONTACT: MIKE BRAMBLETT
TEL: 303.267.6240

STRUCTURAL ENGINEER:
MARTINO & LUTH, INC
999 18TH STREET
SUITE 855 NORTH
DENVER, CO 80202
TEL: 303.260.7118

MEP ENGINEER:
SALAS O'BRIEN
815 SOUTH WABASH AVENUE
CHICAGO, IL 60605
TEL: 312.786.4310

SOLACE APARTMENTS
SITE DEVELOPMENT PLAN

PROJECT INFO
DATE: 11/18/2020
PROJECT MGR: PROJECT MGR
PREPARED BY: PREPARED BY

NOT FOR CONSTRUCTION

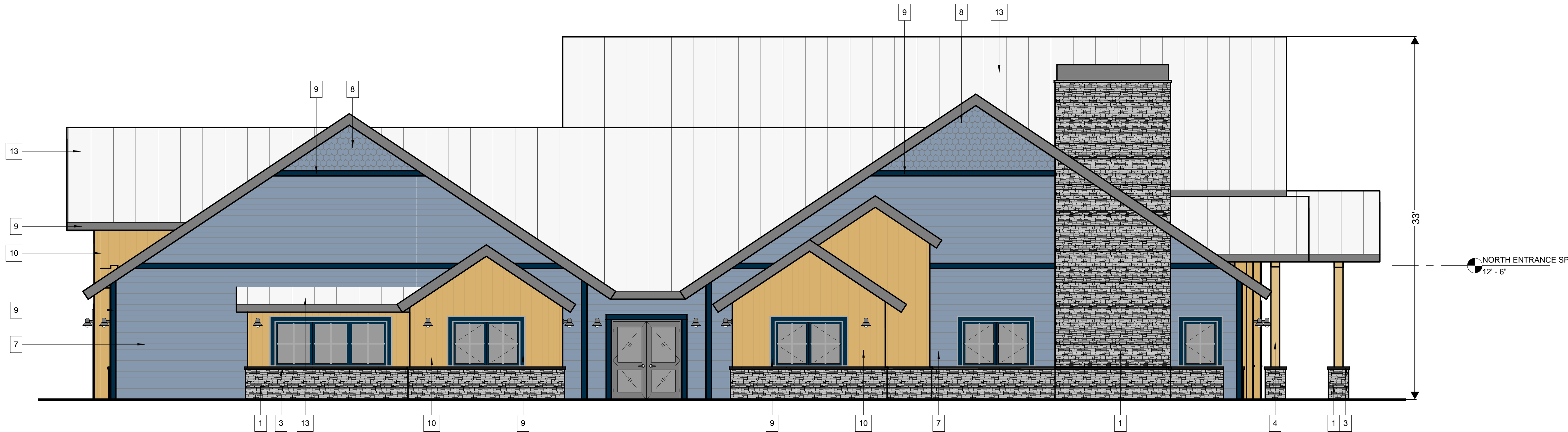
ISSUE INFO
DATE: BY: DESCRIPTION:

ISSUE TYPE
DATE: BY: DESCRIPTION:

GARAGE PLANS & ELEVATIONS

A0.05
12 OF 28

EXTERIOR FINISH KEY											
NO.	MATERIAL	NO.	MATERIAL	NO.	MATERIAL	NO.	MATERIAL	NO.	MATERIAL	NO.	MATERIAL
1	STONE SIDING B.O.D.: BORAL VERSETTA STONE COLOR: LEDGESTONE SAND	4	PREFINISHED HEAVY TIMBER/ENGINEERED TIMBER	7	FIBER CEMENT. LAP SIDING COLOR #1: (BLUE)	10	FIBER CEMENT BD. & BATTEN COLOR #2: (NATURAL)	13	STANDING SEAM METAL	16	STEEL GATES COLOR: DARK BRONZE
2	CAST STONE PIER AND WALL CAPS COLOR: TBD	5	NOT USED	8	FIBER CEMENT. SCALLOPED SIDING COLOR #1: (BLUE)	11	FIBER CEMENT TRIM BOARD	14	PREFINISHED MTL. GUTTER & DOWNSPOUT COLOR: GALVANIZED	17	
3	PRE-CAST SILL B.O.D.: BORAL VERSETTA STONE SILL COLOR: SAND	6	NOT USED	9	FIBER CEMENT TRIM BOARD COLOR #1 (BLUE)	12	NOT USED	15		18	



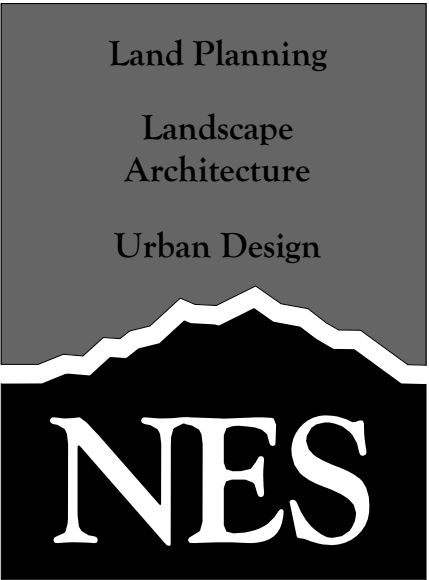
2 EAST ELEVATION

SCALE: 3/16" = 1'-0"



1 NORTH ELEVATION

SCALE: 3/16" = 1'-0"



N.E.S. Inc.
619 N. Cascade Avenue, Suite 200
Colorado Springs, CO 80903

Tel. 719.471.0073
Fax 719.471.0267

www.nescolorado.com

© 2012. All Rights Reserved.

OWNER / DEVELOPER:
JACKSON DEARBORN, LLC
404 S. WELLS STREET
SUITE # 400
CHICAGO, IL 60607
CONTACT: DANE OLIMSTEAD
TEL: 734.216.2577

ARCHITECT:
LCM ARCHITECTS
819 SOUTH WABASH AVE
FIFTH FLOOR
CHICAGO, IL 60605
TEL: 312.913.1717

CIVIL ENGINEER:
JR ENGINEERING
5475 TECH CENTER DRIVE
SUITE # 235
COLORADO SPRINGS, CO 80919
CONTACT: MIKE BRAMBLETT
TEL: 303.267.6240

STRUCTURAL ENGINEER:
MARTINO & LUTH, INC
999 18TH STREET
SUITE 855 NORTH
DENVER, CO 80202
TEL: 303.260.7118

MEP ENGINEER:
SALAS O'BRIEN
815 SOUTH WABASH AVENUE
CHICAGO, IL 60605
TEL: 312.786.4310

SOLACE APARTMENTS

SITE DEVELOPMENT
PLAN

DATE: 11/18/2020
PROJECT MGR: PROJECT MGR
PREPARED BY: PREPARED BY

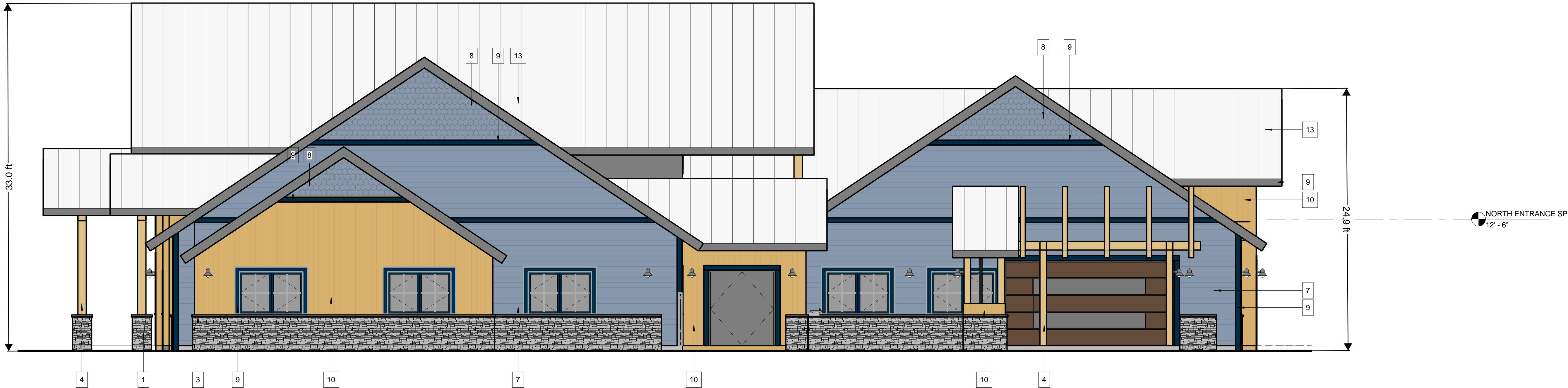
NOT FOR CONSTRUCTION

ISSUE TYPE		
DATE	BY	DESCRIPTION

CLUBHOUSE - OVERALL ELEVATIONS

AC3.00
27 OF 28

EXTERIOR FINISH KEY											
NO.	MATERIAL	NO.	MATERIAL	NO.	MATERIAL	NO.	MATERIAL	NO.	MATERIAL	NO.	MATERIAL
1	STONE SIDING B.O.D.: BORAL VERSETTA STONE COLOR: LEDGESTONE SAND	4	PREFINISHED HEAVY TIMBER/ENGINEERED TIMBER	7	FIBER CEMENT. LAP SIDING COLOR #1: (BLUE)	10	FIBER CEMENT BD. & BATTEN COLOR #2: (NATURAL)	13	STANDING SEAM METAL	16	STEEL GATES COLOR: DARK BRONZE
2	CAST STONE PIER AND WALL CAPS COLOR: TBD	5	NOT USED	8	FIBER CEMENT. SCALLOPED SIDING COLOR #1: (BLUE)	11	FIBER CEMENT TRIM BOARD	14	PREFINISHED MTL. GUTTER & DOWNSPOUT COLOR: GALVANIZED	17	
3	PRE-CAST SILL B.O.D.: BORAL VERSETTA STONE SILL COLOR: SAND	6	NOT USED	9	FIBER CEMENT TRIM BOARD COLOR #1 (BLUE)	12	NOT USED	15		18	



2 WEST ELEVATION

SCALE: 3/16" = 1'-0"



1 SOUTH ELEVATION

SCALE: 3/16" = 1'-0"

Land Planning
Landscape
Architecture
Urban Design

NES

N.E.S. Inc.
619 N. Cascade Avenue, Suite 200
Colorado Springs, CO 80903

Tel. 719.471.0073
Fax 719.471.0267

www.nescolorado.com

© 2012. All Rights Reserved.

OWNER / DEVELOPER:
JACKSON DEARBORN, LLC
404 S. WELLS STREET
SUITE # 400
CHICAGO, IL 60607
CONTACT: DANE OLIMSTEAD
TEL: 734.216.2577

ARCHITECT:
LCM ARCHITECTS
819 SOUTH WABASH AVE
FIFTH FLOOR
CHICAGO, IL 60605
TEL: 312.913.1717

CIVIL ENGINEER:
JR ENGINEERING
5475 TECH CENTER DRIVE
SUITE # 235
COLORADO SPRINGS, CO 80919
CONTACT: MIKE BRAMBLETT
TEL: 303.267.6240

STRUCTURAL ENGINEER:
MARTINO & LUTH, INC
999 18TH STREET
SUITE 855 NORTH
DENVER, CO 80202
TEL: 303.260.7118

MEP ENGINEER:
SALAS O'BRIEN
815 SOUTH WABASH AVENUE
CHICAGO, IL 60605
TEL: 312.786.4310

SOLACE
APARTMENTS

SITE DEVELOPMENT
PLAN

DATE:	11/18/2020
PROJECT MGR:	PROJECT MGR
PREPARED BY:	PREPARED BY

NOT FOR
CONSTRUCTION

ISSUE TYPE

DATE	BY	DESCRIPTION

CLUBHOUSE - OVERALL
ELEVATIONS

AC3.01
28 OF 28