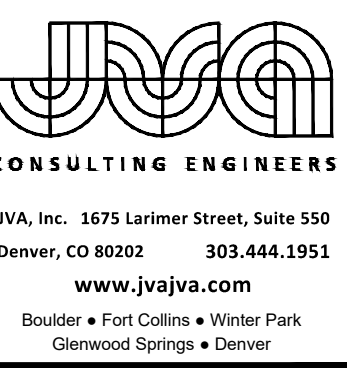
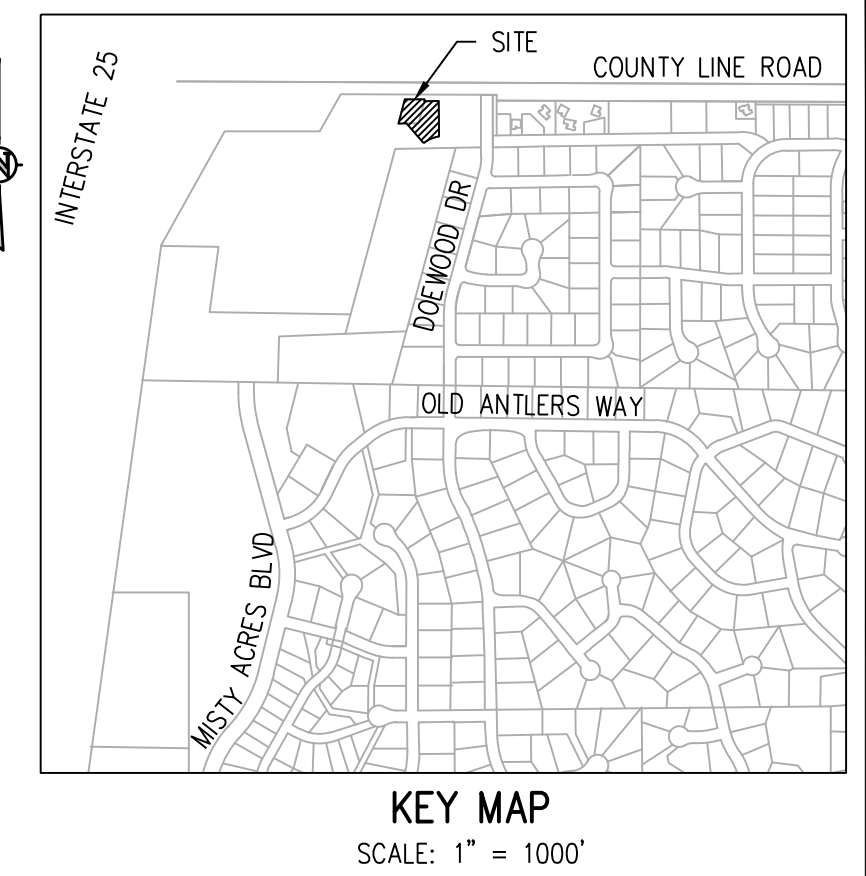


A PARCEL OF LAND LYING IN THE NORTHWEST 1/4 OF SECTION 2, TOWNSHIP 11 SOUTH, RANGE 67 WEST OF THE SIXTH PRINCIPAL MERIDIAN COUNTY OF EL PASO, STATE OF COLORADO

Please depict:
 -Traffic ingress/egress on property
 -Location and height of any fencing, walls, or berms
 -If there is signage:
 . location and dimensions
 - Lot area coverage percentage
 - Open space, landscaping, and impermeable surface percentage
 - Total gross building square footage

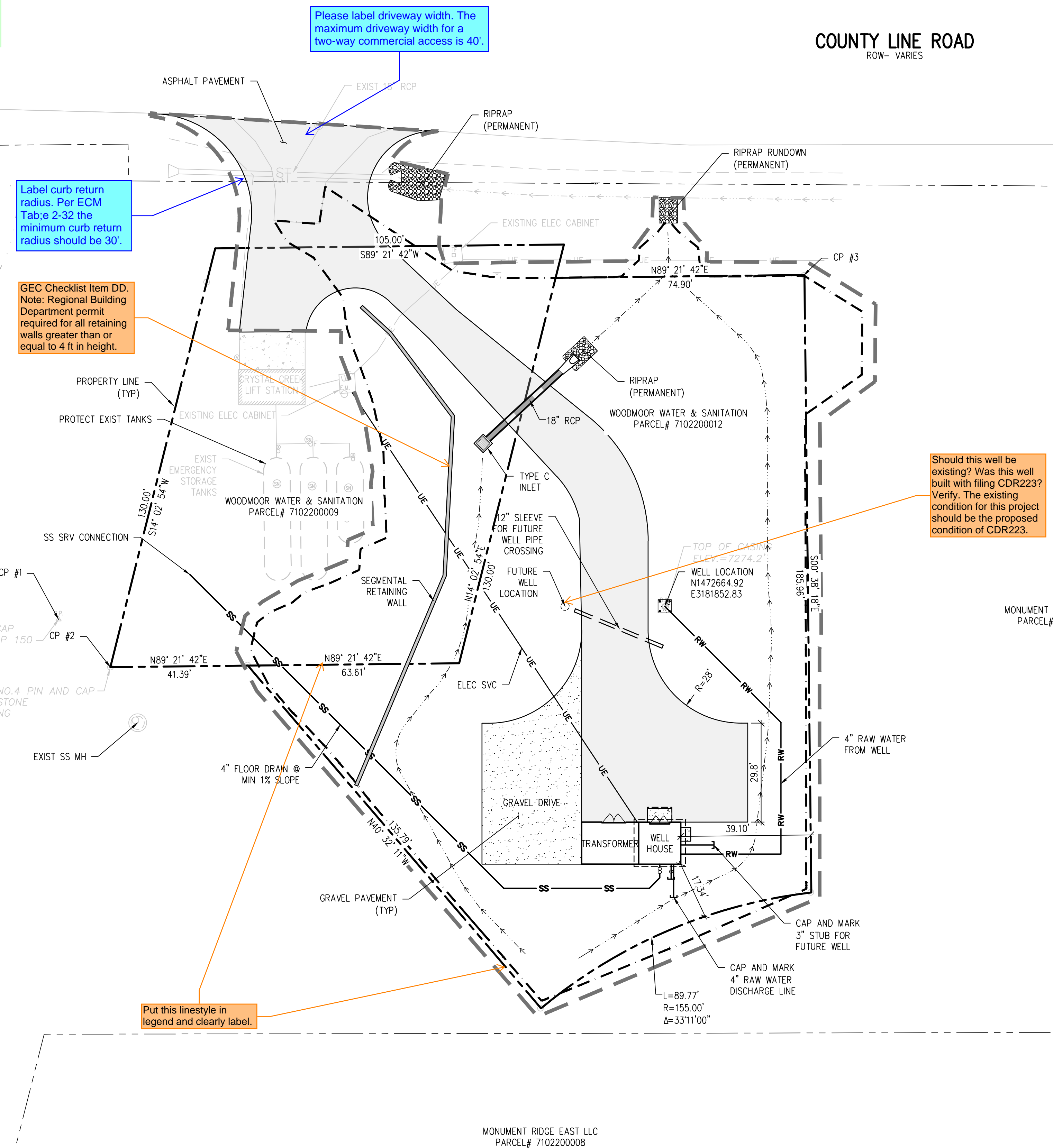
EPC STORMWATER REVIEW COMMENTS
 IN ORANGE BOXES WITH BLACK TEXT

FYI:
 - A driveway access permit from El Paso County is required prior to construction and approval of a building permit.



COUNTY LINE ROAD
 ROW- VARIES

DOEWOOD DRIVE
 ROW - 60'



LEGEND

	LIMITS OF CONSTRUCTION/DISTURBANCE BOUNDARY
	LIMITS OF EARTHWORK CUT/FILL
	DRAINAGE SWALE

EL PASO COUNTY:
 COUNTY PLAN REVIEW IS PROVIDED ONLY FOR GENERAL CONFORMANCE WITH COUNTY DESIGN CRITERIA. THE COUNTY IS NOT RESPONSIBLE FOR THE ACCURACY AND ADEQUACY OF THE DESIGN, DIMENSIONS, AND/OR ELEVATIONS WHICH SHALL BE CONFIRMED AT THE JOB SITE. THE COUNTY THROUGH THE APPROVAL OF THIS DOCUMENT ASSUMES NO RESPONSIBILITY FOR COMPLETENESS AND/OR ACCURACY OF THIS DOCUMENT.

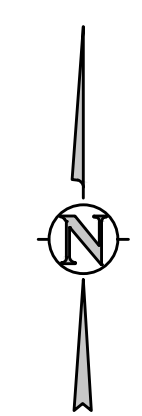
FILED IN ACCORDANCE WITH THE REQUIREMENTS OF THE EL PASO COUNTY LAND DEVELOPMENT CODE, DRAINAGE CRITERIA MANUAL, VOLUMES 1 AND 2, AND ENGINEERING CRITERIA MANUAL, AS AMENDED.

IN ACCORDANCE WITH ECM SECTION 1.12, THESE CONSTRUCTION DOCUMENTS WILL BE VALID FOR CONSTRUCTION FOR A PERIOD OF 2 YEARS FROM THE DATE SIGNED BY THE EL PASO COUNTY ENGINEER. IF CONSTRUCTION HAS NOT STARTED WITHIN THOSE 2 YEARS, THE PLANS WILL NEED TO BE

RESUBMITTED FOR APPROVAL, INCLUDING PAYMENT OF REVIEW FEES AT THE PLANNING AND COMMUNITY DEVELOPMENT DIRECTORS DISCRETION.

JENNIFER IRVINE, P.E.
 COUNTY ENGINEER / ECM ADMINISTRATOR

DATE



Add "PCD File No. PPR2317"

N:\1051.9e - Well 22\Drawings\El Paso County Permits\1051.9e - Site Plan.dwg, 3/14/2023 - 8:35 AM, [6]

© FOUND NO.4 PIN AND CAP CORNERSTONE SURVEYING

NO.	DATE	DES'D	OWN	REVISION DESCRIPTION
-----	------	-------	-----	----------------------

DESIGNED BY:	JGJ
DRAWN BY:	JGJ
CHECKED BY:	KJC
JOB #:	1051.9e
DATE:	MARCH 2023
© JVA, INC.	

WOODMOOR WSD NO. 1
 WELL NO. 22
 EL PASO COUNTY, COLORADO
 SITE DEVELOPMENT PLAN

SHEET NO.
FIG-1