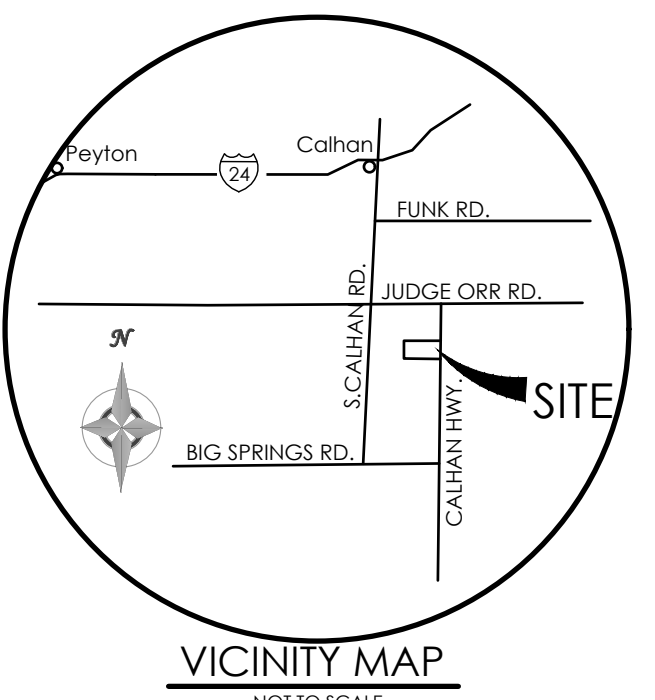
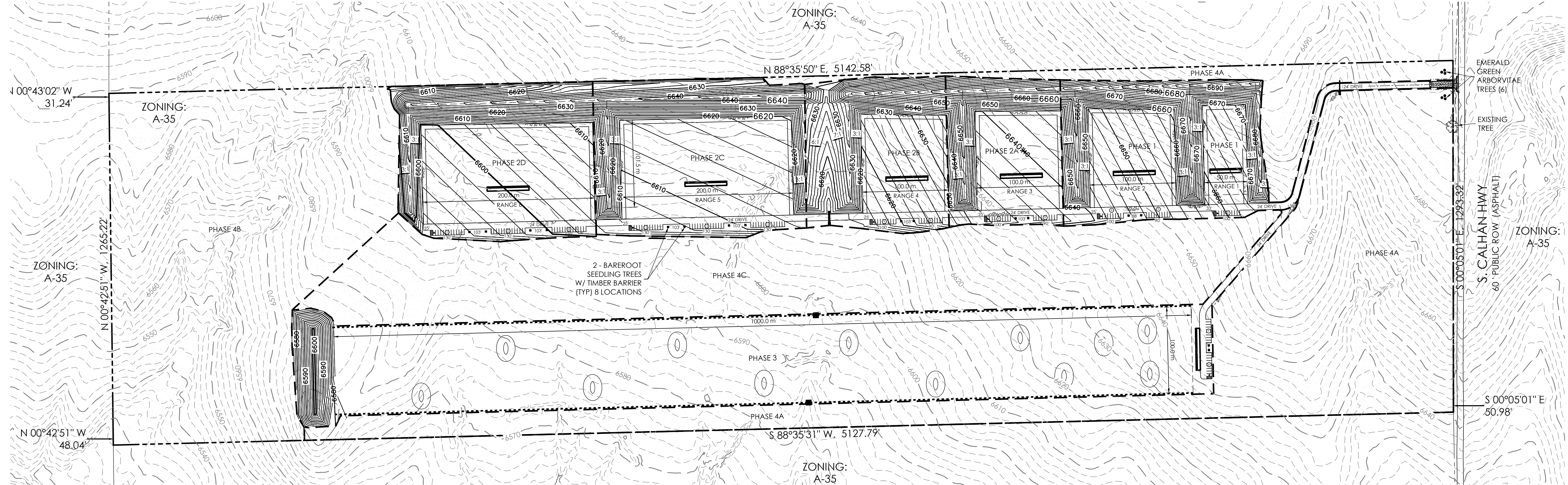


# LANDSCAPE PLAN

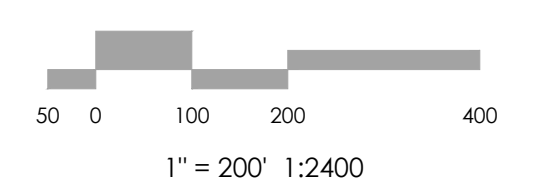
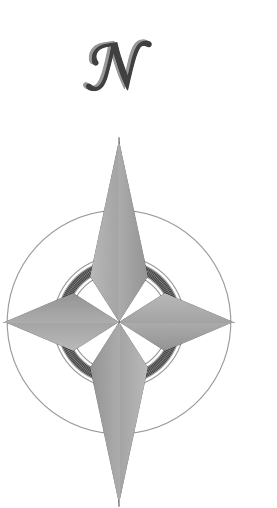
(PHASES 1, 2A, 2B, 2C AND 3)

## 168 TRAINING FACILITY

A PORTION OF LAND LOCATED IN SECTION 7, TOWNSHIP 13 SOUTH, RANGE 61 WEST OF THE 6TH PRINCIPAL MERIDIAN, EL PASO COUNTY, COLORADO

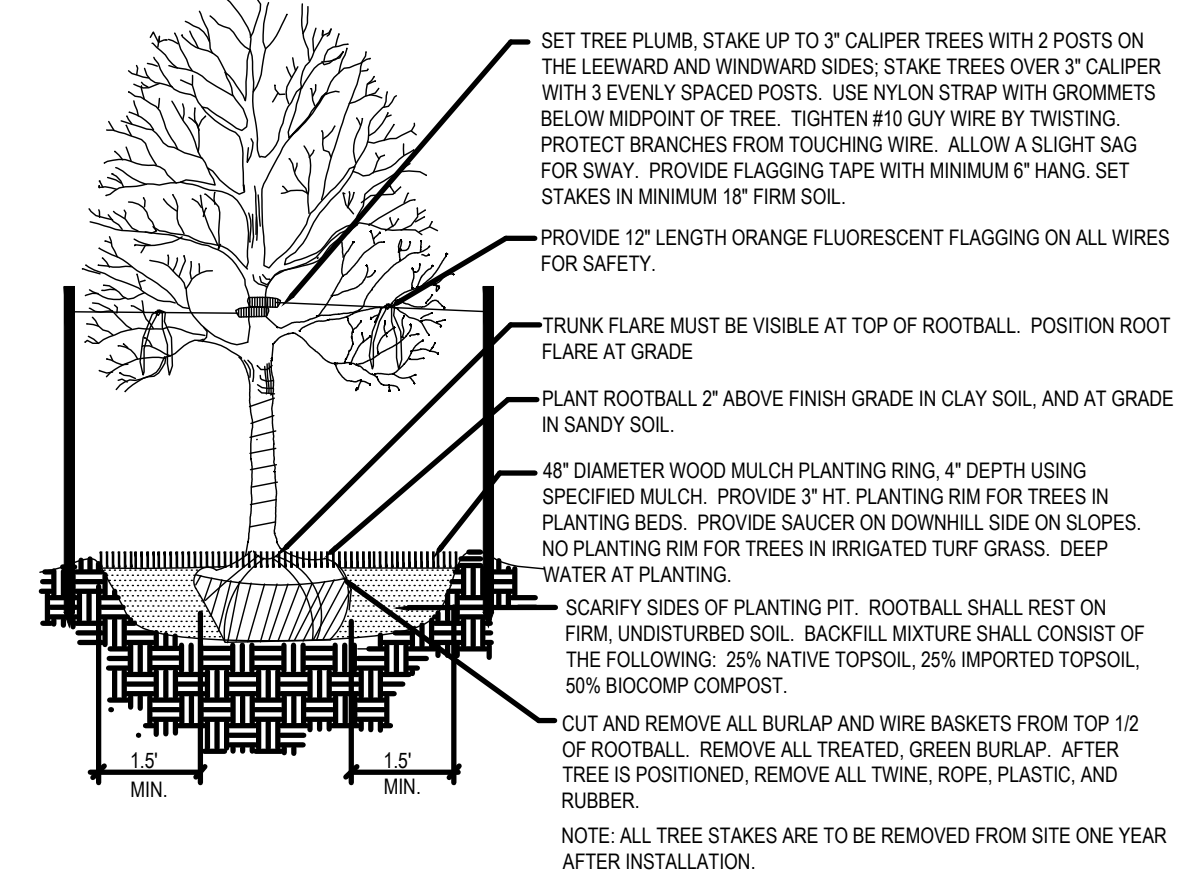


BENCHMARK  
THE EXISTING TOPOGRAPHY SHOWN ON THIS PLAN WAS PREPARED BY MVE INC. USING EL PASO COUNTY DATUM NAVD 88.

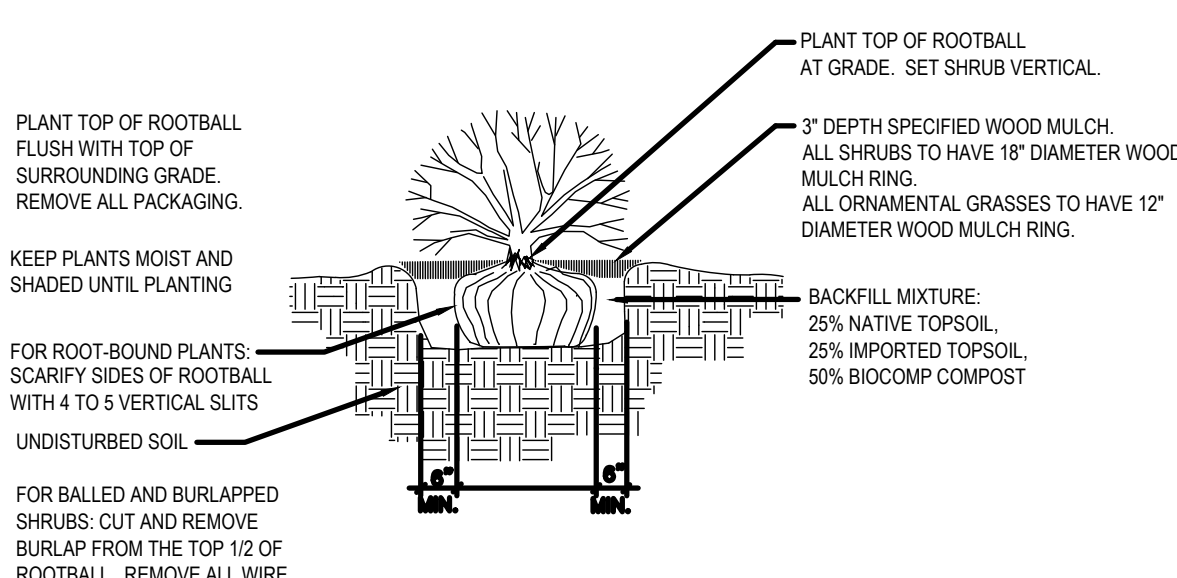


### PLANTING DETAILS

- NOTES:
- DO NOT REMOVE OR CUT LEADER
  - PRUNE ONLY DEAD OR BROKEN BRANCHES AND WEAK OR NARROW CROTCHES
  - DO NOT REMOVE LOWER LIMBS AND SPROUTS FOR AT LEAST TWO GROWING SEASONS
  - KEEP PLANTS MOIST AND SHADED UNTIL PLANTED
  - DO NOT FERTILIZE FOR AT LEAST ONE GROWING SEASON
  - WRAP TRUNK ON EXPOSED SITES OR SPECIES WITH THIN BARK. USE ELECTRICAL TAPE NOT TWINE. WRAP OCTOBER 15 AND REMOVE BY MARCH 31.



1 Deciduous Tree Planting Detail  
SCALE: NOT TO SCALE



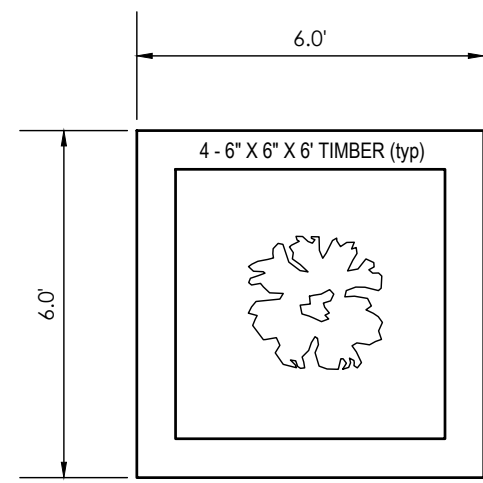
2 Shrub Planting Detail  
SCALE: NOT TO SCALE

CLIMATE ZONE: PLAINS

PLANT COMMUNITIES: PLAINS AND LOWER ELEVATION RIPARIAN

### LANDSCAPE NOTES

- OWNER'S WATER WELL HAS NOT BEEN ESTABLISHED. WATERING OF ALL LANDSCAPE AREAS TO BE PERFORMED BY OWNER UNTIL PLANTS ARE ESTABLISHED.
- CONTRACTOR IS RESPONSIBLE FOR GETTING ALL UTILITY LOCATES PRIOR TO STARTING ANY WORK ON SITE AND ALSO HAVING UTILITIES RELOCATED AS NECESSARY FOR THE DURATION OF CONSTRUCTION.
- OWNER IS RESPONSIBLE FOR VERIFYING QUANTITIES OF MATERIALS NEEDED TO COMPLETE THIS PLAN IN THE FIELD. OWNER MAY PROVIDE SUBSTITUTIONS OF LANDSCAPE MATERIALS. OWNER MAY ALTER LANDSCAPE MATERIAL LOCATIONS DUE TO ON-SITE CONDITIONS.
- OWNER IS TO PROVIDE A ONE YEAR WARRANTY ON ALL PLANT MATERIALS, NATIVE GRASS, AND WORKMANSHIP.
- THE OWNER OF THIS PROPERTY AND ANY FUTURE OWNERS SHALL BE RESPONSIBLE FOR THE PROPER LANDSCAPE MAINTENANCE OF THIS SITE. MAINTENANCE OF THIS SITE INCLUDES, BUT IS NOT LIMITED TO, LANDSCAPE WEEDING, FERTILIZATION, PRUNING, AND PLANT MATERIAL REPLACEMENT.
- PLANTING DETAILS FOR BARE ROOT SCRUBS AND SEEDLING TREES TO BE UTILIZED:
  - REMOVE PACKAGING MATERIAL FROM BARE ROOTS
  - SOAK ROOTS IN BUCKET OF TEPID WATER FOR 30 TO 60 MINUTES (MAXIMUM)
  - KEEP ROOTS MOIST AT ALL TIMES PRIOR TO AND DURING PLANTING
  - DIG HOLE TWICE THE SIZE OF ROOT SPREAD.
  - BACKFILL WITH UNALTERED NATIVE SOIL. MYCORRHIZAL FUNGI AND BONE MEAL MAY BE ADDED BACKFILL
  - STAKE SEEDLINGS IF NECESSARY
  - DO NOT FERTILIZE BARE ROOT SCRUBS AND SEEDLING TREES WITHIN FIRST YEAR OF GROWTH
  - PROPER MOISTURE IS CRITICAL TO THE BARE ROOT SCRUBS AND SEEDLING TREES



3 Parking Tree Planter  
SCALE: NOT TO SCALE

### LANDSCAPED PARKING TREE NOTES

- NATIVE BARE ROOT TREES FOR COLORADO HIGH PLAINS TO BE SELECTED FROM THE COLORADO STATE UNIVERSITY EXTENSION SHRUB TABLE FOR LOW-WATER NATIVE PLANTS.
- ONE (1) BARE ROOT SEEDLING TREES PER PLANTER.
- PLANTER SHALL BE 6' X 6' AND 6' HIGH AND SHALL BE CONSTRUCTED OF WOOD TIMBERS.
- BARE ROOT TREES SHALL BE HAND WATERED BY THE OWNER PER COLORADO STATE UNIVERSITY EXTENSION'S RECOMMENDED GUIDELINES.

OWNER/DEVELOPER  
K. MARC FITZWATER  
9758 VISTAS PARK DR  
Peyton CO, 80831-6381  
719-243-9168  
marc@i68consulting.com

CONSULTANT/ENGINEER  
MVE, INC.  
1903 LELARAY STREET, SUITE 200  
COLORADO SPRINGS, CO 80909  
(719) 635-5736

ZONING  
AGRICULTURAL (A-35)

PARCEL SIZE  
158.45±

TAX SCHEDULE NO.  
1300000712

PROPERTY ADDRESS  
6954 S CALHAN HIGHWAY  
CALHAN, CO 80806

REVISIONS

DESIGNED BY \_\_\_\_\_  
DRAWN BY \_\_\_\_\_  
CHECKED BY \_\_\_\_\_  
AS-BUILTS BY \_\_\_\_\_  
CHECKED BY \_\_\_\_\_

+158 Acre Parcel  
168 Training Facility

LANDSCAPE PLAN

PLAN SHEET

MVE PROJECT 61224

MVE DRAWING DEV-LS

PPR2440

FEBRUARY 14, 2025  
SHEET 1 OF 1

